



DE VALK  
YACHT BROKERS



## LAGOON 380



DE VALK  
YACHT BROKERS

# LAGOON 380

## BROKER'S COMMENTS

The Lagoon 380 is a proven ocean crosser. It's a sturdy, safe Cat and extremely popular. This 380 has the 4 cabin layout, 2 bathrooms with shower and toilet facilities, perfect for families with children. The saloon consists of three spaces – the chart table to port, galley to starboard and dining area to the front, big enough to accommodate six. On deck a large cockpit with a dining table and storage space. Twin 29 HP engines ensure easy maneuvering in any marina. Pélagie was never chartered and is now offered by her 3th owner. This 380 is located in our sales marina and is ready for a visit.

*Harald Padberg*

## SPECIFICATIONS

<b>Dimensions</b>	11.55 x 6.53 x 1.15 (m)	<b>Builder</b>	CNB - France
<b>Built</b>	2003	<b>Cabins</b>	4
<b>Material</b>	GRP	<b>Berths</b>	8
<b>Engine(s)</b>	2 x Volvo Penta MD-2030 D-BT diesel	<b>Hp/Kw</b>	2 x 29.00 (hp), 21.00 (kw)
<b>Asking price</b>	sold (VAT )	<b>Lying</b>	at sales office

## CONTACT

<b>Sales office</b>	De Valk Monnickendam B.V.	<b>Telephone</b>	+31 (0)299 65 63 50
<b>Address</b>	Hoogedijk 6 1145 PM Katwoude NL	<b>E-mail</b>	monnickendam@devalk.nl

## DISCLAIMER

These particulars are given in good faith as supplied but cannot be guaranteed.



## GENERAL

<b>Model</b>	LAGOON 380
<b>Type</b>	sailing yacht
<b>LOA (m)</b>	11,55
<b>LWL (m)</b>	11,50
<b>Beam (m)</b>	6,53
<b>Draft (m)</b>	1,15
<b>Year built</b>	2003
<b>Builder</b>	CNB - France
<b>Country</b>	France
<b>Designer</b>	Van Peteghem & Lauriot-Prevost
<b>Displacement (t)</b>	7,26
<b>CE norm</b>	A
<b>Hull material</b>	GRP
<b>Hull colour</b>	white
<b>Superstructure material</b>	GRP
<b>Deck material</b>	GRP
<b>Deck finish</b>	non-skid moulded in
<b>Cockpit deck finish</b>	non-skid moulded in
<b>Antifouling (year)</b>	2018
<b>Window material</b>	polycarbonate
<b>Deckhatch</b>	8 X
<b>Portholes</b>	aluminium 2 X
<b>Fuel tank (litre)</b>	polyethylene 100 L.
<b>Fuel tank 2 (litre)</b>	polyethylene 100 L.
<b>Level indicator (fuel tank)</b>	2 X
<b>Fuel daytank (litre)</b>	polyethylene 180 L.
<b>Freshwater tank (litre)</b>	polyethylene 2 X 300 L.
<b>Level indicator (freshwater)</b>	yes
<b>Blackwater tank (litre)</b>	+/- 80 L.
<b>Wheel steering</b>	hydraulic



Outside helm position	yes
Emergency tiller	yes

## ACCOMMODATION

Cabins	4
Berths	8
Interior	oak
Floor	teak and holly
Pilot house/deck saloon	yes
Headroom saloon (m)	2,12
Heating	diesel ducted hot air Wallas
Navigation center	yes
Chart table	yes
Sliding door to cockpit	yes
Galley	yes
Countertop	Duropol
Sink	stainless steel
Cooker	calor gas ENO
Oven	ENO
Fridge	yes
Hot water system	220V + engine Quick Nautic boiler BXS
Water pressure system	electrical
Manual and/or foot pump	yes
Owners cabin	double bed
Bed length (m)	2,00 x 1,60
Wardrobe	hanging and shelves
Bathroom	shared
Toilet	shared
Toilet system	electric
Wash basin	in the bathroom
Shower	shared



# LAGOON 380

<b>Guest cabin 1</b>	double bed
<b>Bed length (m)</b>	2,00 x 1,56 X 0,90
<b>Wardrobe</b>	shelves
<b>Bathroom</b>	shared
<b>Toilet</b>	shared
<b>Toilet system</b>	electric
<b>Wash basin</b>	in the bathroom
<b>Shower</b>	shared
<b>Guest cabin 2</b>	double bed
<b>Bed length (m)</b>	2,00 x 1,60
<b>Wardrobe</b>	hanging and shelves
<b>Bathroom</b>	shared
<b>Toilet</b>	shared
<b>Toilet system</b>	manual
<b>Wash basin</b>	in the bathroom
<b>Guest cabin 3</b>	yes
<b>Bed length (m)</b>	2,00 x 1,56 X 0,90
<b>Wardrobe</b>	shelves
<b>Bathroom</b>	shared
<b>Toilet</b>	shared
<b>Toilet system</b>	manual
<b>Wash basin</b>	in the bathroom
<b>Shower</b>	shared

## MACHINERY

<b>No of engines</b>	2
<b>Make</b>	Volvo Penta
<b>Type</b>	MD-2030 D-BT
<b>HP</b>	29
<b>kW</b>	21,00
<b>Fuel</b>	diesel



# LAGOON 380

<b>Year installed</b>	2003
<b>Maximum speed (kn)</b>	8,5
<b>Cruising speed (kn)</b>	7
<b>Engine cooling system</b>	freshwater heat exchanger
<b>Drive</b>	sail-drive
<b>Engine controls</b>	bowden cable
<b>Gearbox</b>	mechanical
<b>Manual bilge pump</b>	yes
<b>Electric bilge pump</b>	2 X
<b>Generator</b>	Honda EU20i - 2000w
<b>Start battery</b>	2 X
<b>Service battery</b>	3 X new 2018
<b>Battery monitor</b>	Xantrex
<b>Battery charger</b>	Dolphin 12v/40a
<b>Inverter</b>	Mastervolt Mass Sine 12/2000
<b>Wind generator</b>	yes
<b>Solar panel</b>	yes
<b>Shorepower</b>	with cable
<b>Watermaker</b>	Spectra VT-150-MPC (is preserved)
<b>Extra info</b>	Engine service done in spring 2021 - heat exchangers are replaced at the same time

## NAVIGATION

<b>Compass</b>	Plastimo
<b>Depth sounder/log</b>	Raymarine ST60
<b>Forw. looking depth sounder</b>	Echopilot FLS Platinum
<b>Windset</b>	Raymarine ST60+
<b>VHF</b>	Raymarine Ray-49
<b>VHF handheld</b>	yes
<b>Autopilot</b>	Raymarine ST600R & ST60+
<b>Radar</b>	Raymarine



<b>Radar/GPS/plotter</b>	Raymarine E80
<b>Personal computer</b>	Windows XP + Open CPM software
<b>Wifi antenna</b>	+ amplifier
<b>AIS transceiver</b>	yes
<b>Radio receiver</b>	ICOM IC-7200
<b>Transmitter</b>	ICOM IC-7200
<b>Navigation lights</b>	yes

## EQUIPMENT

<b>Sun awning</b>	/ sprayhood - new 2020
<b>Cockpit cushions</b>	yes
<b>Cockpit table</b>	yes
<b>Bathing platform</b>	yes
<b>Boarding ladder</b>	stainless steel
<b>Deck shower</b>	yes
<b>Anchor</b>	Rocna
<b>Anchor chain</b>	yes
<b>Windlass</b>	electrical
<b>Dinghy</b>	rigid inflatable Cholamark Boat Co.
<b>Outboard</b>	Tohatsu 5 HP
<b>Outboard support</b>	yes
<b>Davits</b>	stainless steel
<b>Davits controls</b>	yes
<b>Sea railing</b>	wire
<b>Grab rail (superstructure)</b>	stainless steel
<b>Railing side opening gates</b>	yes
<b>Life raft</b>	container
<b>Last life raft survey</b>	needs to be checked / survey
<b>Safety lines on deck</b>	yes
<b>Fenders</b>	yes
<b>Mooring lines</b>	yes



Spare parts	yes
Tools	yes
Radio-cd player	Pioneer
Cockpit speakers	2 X
Speakers in salon	2 X
Clock - barometer	and Hygro - Plastimo

## RIGGING

Rigging	sloop
Standing rigging	wire
Material mast	aluminium
Spreaders	yes
Mainsail	2 X
Mainsail cover	new 2020
Fully battened mainsail	yes
Genoa	2 X
Genoa furler	Profurl
Gennaker	new 2020
Reefing System	quick-one-line-reefing
Primary sheet winch	Quick electric
Genoa sheetwinches	2 x Harken 44 2-spd
Extra info	2 sets of sails. 1 set is original, 2nd set has been checked by sailmaker in November 2021
Extra info	Wires standing rigging new in 2007





# LAGOON 380



# LAGOON 380



# LAGOON 380





# LAGOON 380



# LAGOON 380





# LAGOON 380



# LAGOON 380





# LAGOON 380





# LAGOON 380



# LAGOON 380

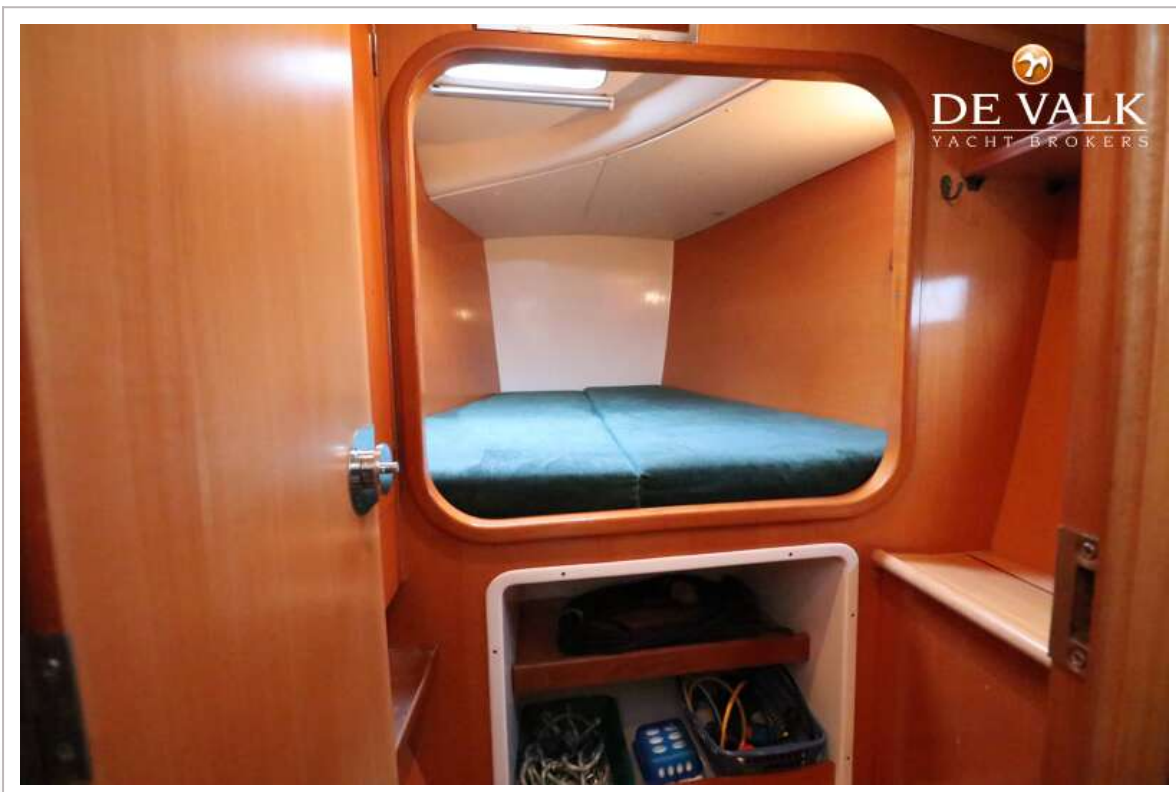




# LAGOON 380



# LAGOON 380



# LAGOON 380





# LAGOON 380



# LAGOON 380

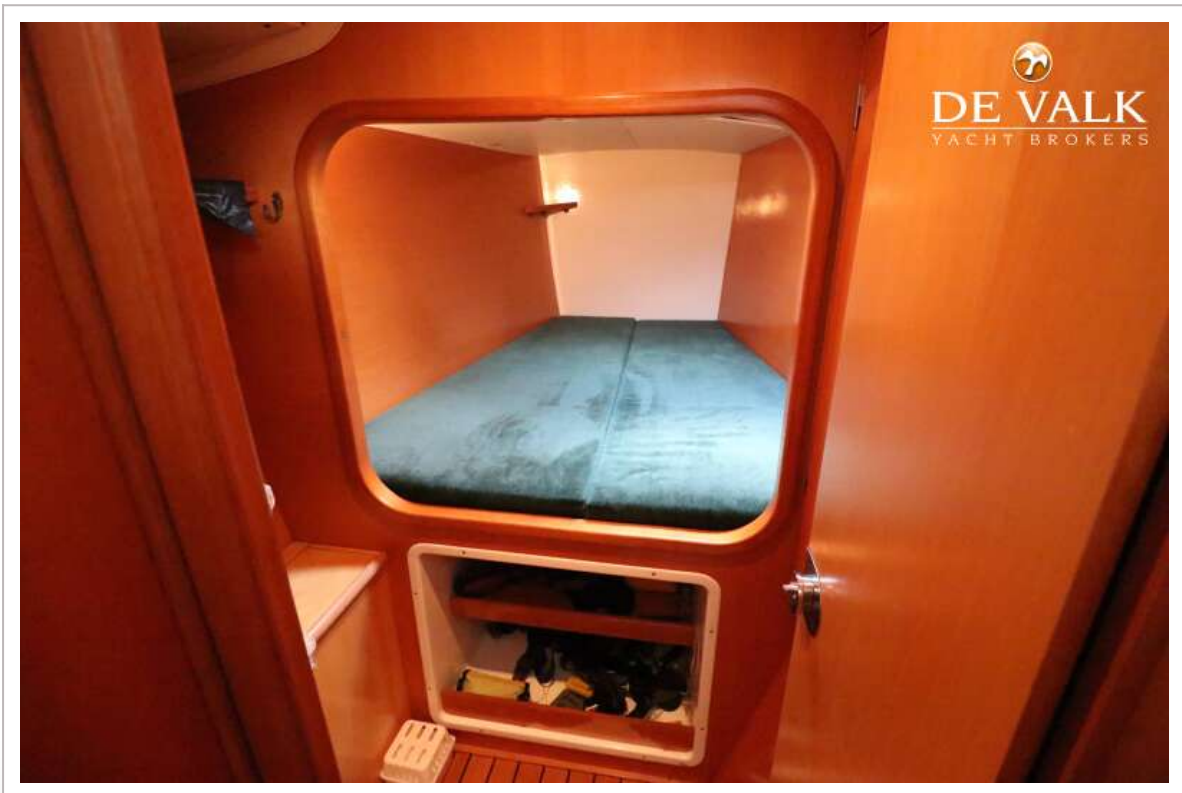


# LAGOON 380

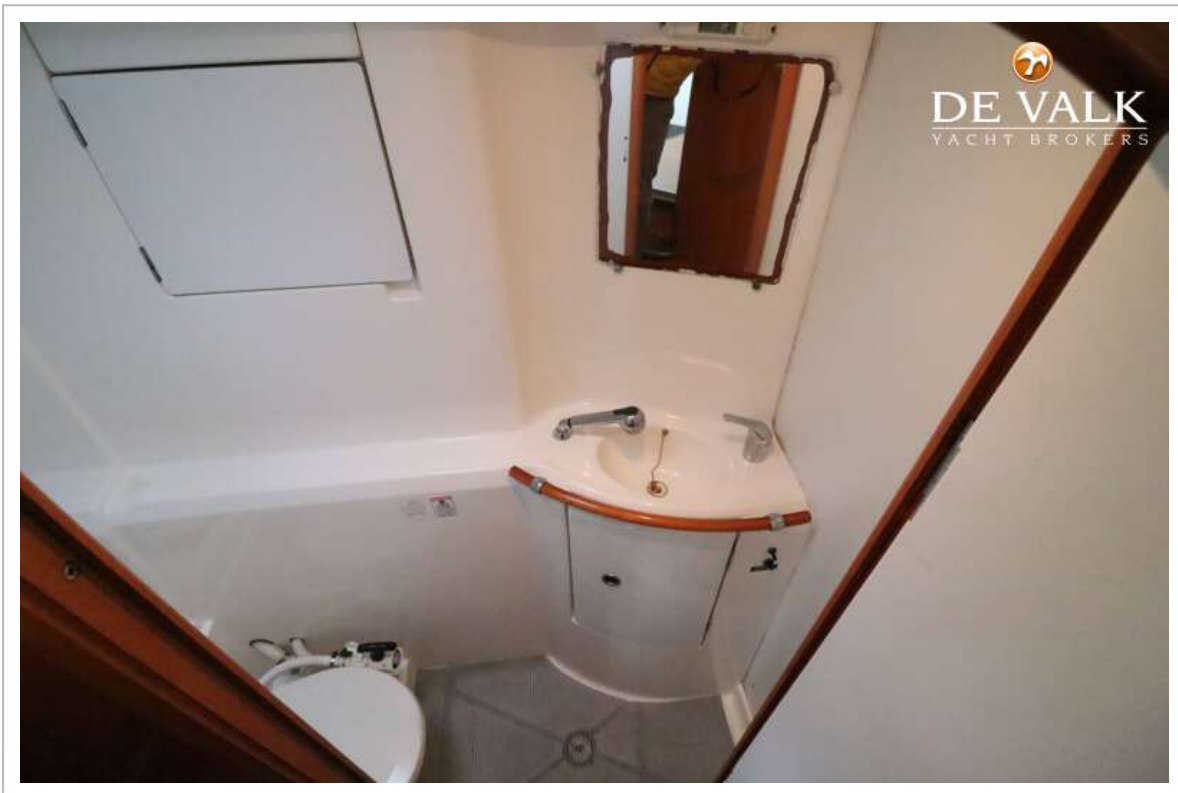




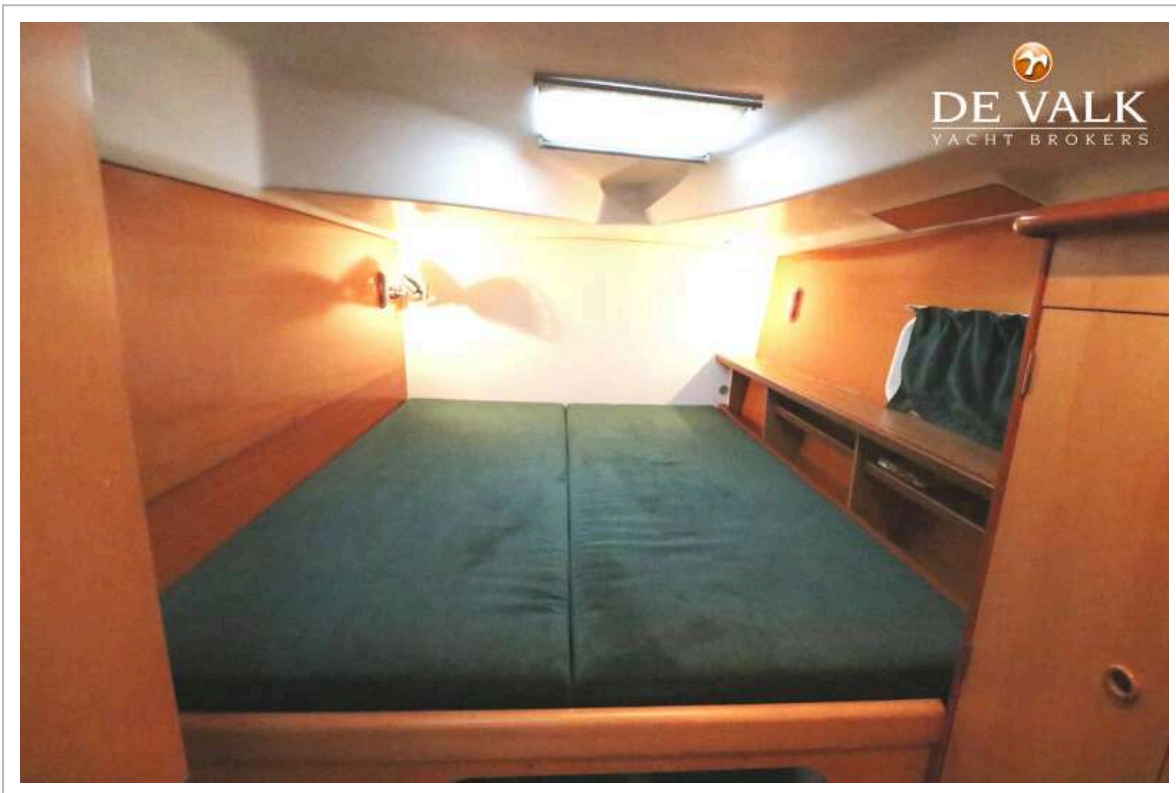
# LAGOON 380



# LAGOON 380

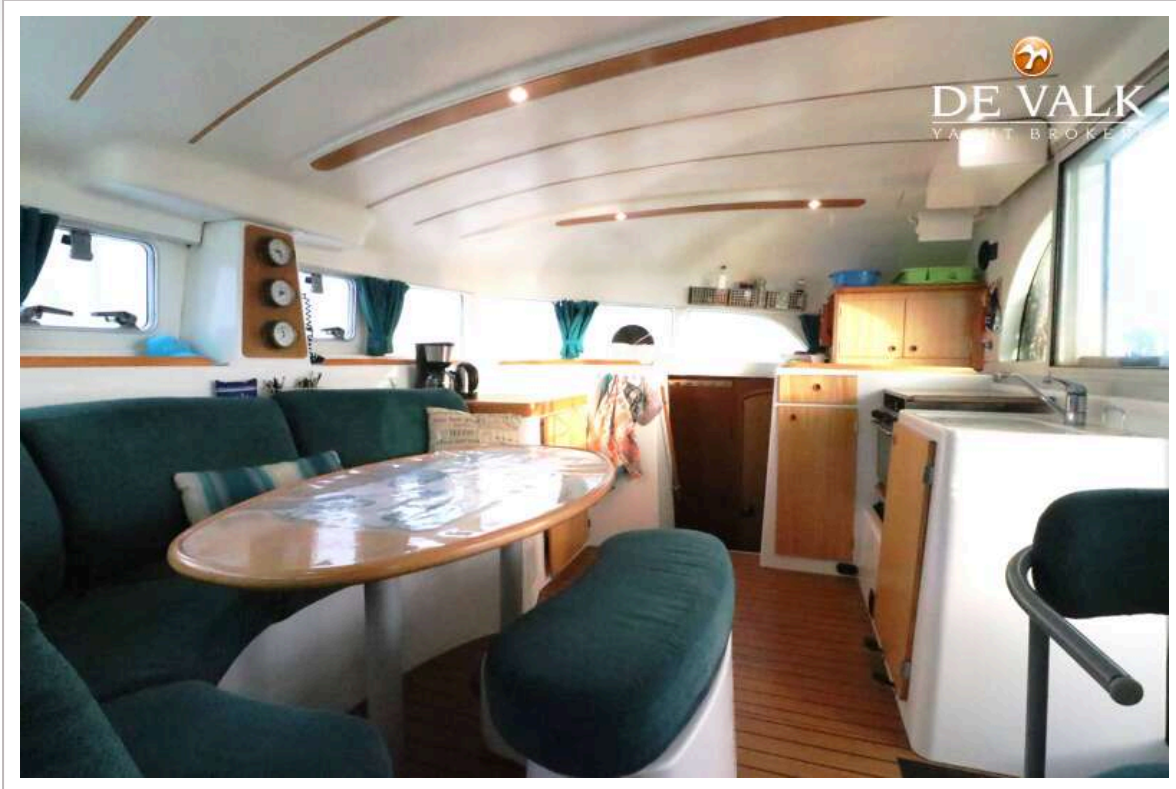


# LAGOON 380





# LAGOON 380



# LAGOON 380

