



DE VALK
YACHT BROKERS



COMPROMIS 999



DE VALK
YACHT BROKERS

BROKERAGE | CHARTER | BERTHS | FINANCE | INSURANCE | YACHT MANAGEMENT

BROKER'S COMMENTS

Very much appreciated Dutch "Classic" from Frans Maas. There are not many yachts who can compete with the interior space of the Compromis 999 in its class. With her centrecockpit and large aftcabin, the 999 was a classic in the making upon introduction. An abundance of stowage space, headroom and generally a well conceived yacht. Excellent condition!

Johan Nooitgedagt

SPECIFICATIONS

Dimensions	10.00 x 3.40 x 1.50 (m)	Builder	Zaadnoordijk Watersport
Built	1992	Cabins	2
Material	GRP	Berths	5
Engine(s)	1 x Yanmar 3GM30 diesel	Hp/Kw	27.00 (hp), 19.85 (kw)
Asking price	sold (VAT)	Lying	contact Hindeloopen

CONTACT

Sales office	De Valk Hindeloopen B.V.	Telephone	+31 514 52 40 00
Address	Oosterstrand 1 8713 JS Hindeloopen NL	E-mail	hindeloopen@devalk.nl

DISCLAIMER

These particulars are given in good faith as supplied but cannot be guaranteed.



GENERAL

Model	COMPROMIS 999
Type	sailing yacht
LOA (m)	10,00
LWL (m)	8,15
Beam (m)	3,40
Draft (m)	1,50
Air draft (m)	14,00
Headroom (m)	1,98
Year built	1992
Builder	Zaadnoordijk Watersport
Country	The Netherlands
Displacement (t)	5
Ballast (tonnes)	cast iron 2
CE norm	A
Hull material	GRP
Hull colour	off-white
Hull shape	round-bilged
Keel type	fin keel
Superstructure material	GRP
Rubbing strake	rubber
Deck material	GRP
Deck finish	Treadmaster
Antifouling (year)	2016
Window frame	aluminium
Window material	perspex
Fuel tank (litre)	stainless steel 70
Level indicator (fuel tank)	yes
Freshwater tank (litre)	stainless steel 180
Level indicator (freshwater)	yes
Wheel steering	mechanical



Emergency tiller yes

ACCOMMODATION

Cabins	2
Berths	5
Interior	teak
Floor	teak and holly
Pilot house	yes
Headroom saloon (m)	1,90
Heating	diesel ducted hot air Webasto
Chart table	yes
Aft Cabin	yes
Galley	yes
Countertop	wood
Sink	stainless steel
Cooker	3 burner
Oven	yes
Fridge	yes
Water pressure system	electrical
Manual and/or foot pump	yes
Owners cabin	double bed
Wardrobe	hanging/drawers/shelves
Toilet	separate
Toilet system	manual
Wash basin	at the toilet
Guest cabin 1	v-bed
Wardrobe	drawers and shelves
Bathroom	separate
Toilet	separate
Toilet system	manual
Wash basin	at the toilet



MACHINERY

No of engines	1
Make	Yanmar
Type	3GM30
HP	27,00
kW	19,85
Fuel	diesel
Maximum speed (kn)	6
Cruising speed (kn)	5
Consumption (l/hr)	2
Engine cooling system	freshwater heat exchanger
Drive	sail-drive
Engine controls	mechanical
Gearbox	mechanical
Propeller type	fixed
Propeller blades	2
Shaft lubrication	water
Manual bilge pump	yes
Batteries	yes
Start battery	70 ah 2015
Service battery	70 ah 2010
Battery charger	yes
Shorepower	with cable
Extra info	Saildrive Seal 2010

NAVIGATION

Compass	2010 Plastimo
Electric compass	Raymarine
Depth sounder	Raymarine
Log	Raymarine
Repeater	Raymarine



VHF	Icom - M 421
Autopilot	Autohelm 4000
GPS	Raymarine
Plotter	Navman Tracker 5380i

EQUIPMENT

Sprayhood	2015
Cockpit cover	2015
Winter cover	yes
Cockpit table	yes
Boarding ladder	stainless steel
Anchor	yes
Anchor chain	yes
Sea railing	wire
Grab rail (superstructure)	wood
Pushpit	yes
Pulpit	yes
Radar reflector	yes
Fenders	yes
Mooring lines	yes
Spare parts	yes
Radio-cd player	Gelhard
Speakers in salon	Blaupunkt
Clock - barometer	yes
Fire extinguisher	yes

RIGGING

Rigging	sloop
Standing rigging	wire
Brand mast	Seldén
Material mast	aluminium



Spreaders	yes
Mainsail	2015 20,8m2
Mainsail cover	yes
Jib	33,5m2
High aspect	2015 24,2m2
Genoa furler	yes
Genoa cover	yes
Reefing System	quick-one-line-reefing
Backstay adjuster	tackle
Boomvang	mechanical
Genoa sheetwinches	Lewmar
Halyard winches	Lewmar





COMPROMIS 999



COMPROMIS 999



COMPROMIS 999





COMPROMIS 999



COMPROMIS 999



COMPROMIS 999



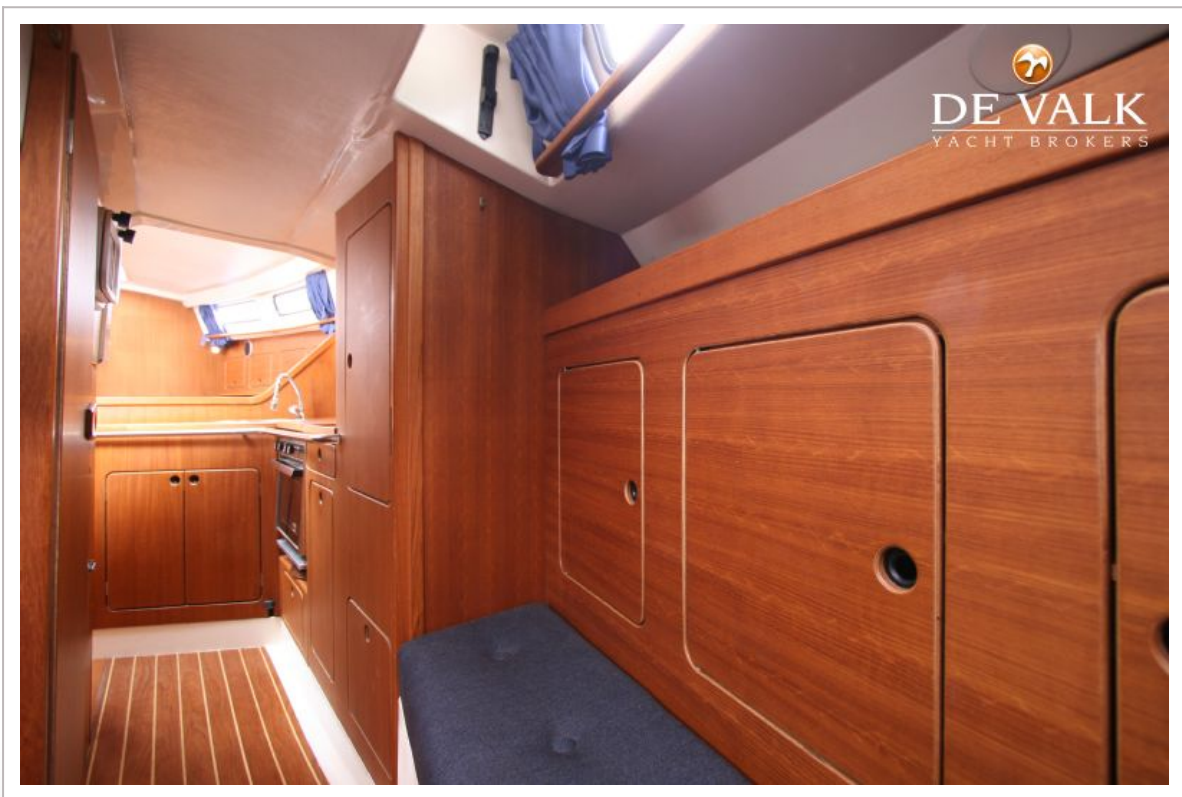
COMPROMIS 999



COMPROMIS 999



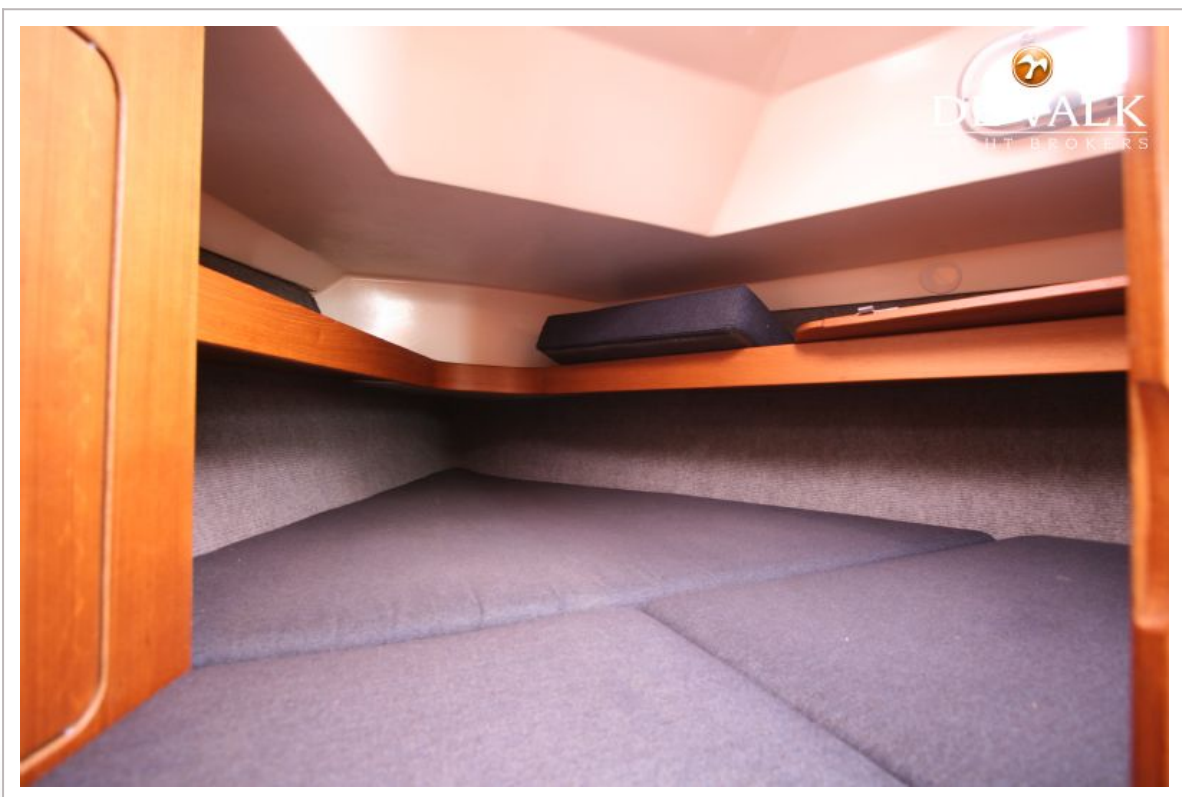
COMPROMIS 999



COMPROMIS 999



COMPROMIS 999



COMPROMIS 999



