



DE VALK
YACHT BROKERS



BAVARIA 38 CRUISER



DE VALK
YACHT BROKERS

BAVARIA 38 CRUISER

BROKER'S COMMENTS

Good Bavaria 38 Cruiser from first and only owner. Has many features for safe and short handed sailing, like stoway sails, German Sheeting system etc. The double cabin version is very practical and offers more space in the owner cabin. She comes well equipped with bow thruster, HT sail, radar, plotter, autopilot etc. She was only used for family sailing in the Dutch waterways. The interior has an abundance of stowage space, ample sized cabins and a comfortable saloon and head-shower layout. Through the use of portholes and deck hatches the mahogany interior is very light and well ventilated.

Marc Weijenberg

SPECIFICATIONS

Dimensions	11.72 x 3.90 x 1.60 (m)	Builder	Bavaria Yachtbau GmbH
Built	2008	Cabins	2
Material	GRP	Berths	6
Engine(s)	1 x Volvo Penta D1-30 diesel	Hp/Kw	28.00 (hp), 20.58 (kw)
Asking price	sold (VAT)	Lying	at sales office

CONTACT

Sales office	De Valk Sint Annaland B.V.	Telephone	+31 (0)166 601 000
Address	Koelhuisweg 4 4697 RM Sint Annaland NL	E-mail	sintannaland@devalk.nl

DISCLAIMER

These particulars are given in good faith as supplied but cannot be guaranteed.



BAVARIA 38 CRUISER

GENERAL

Model	BAVARIA 38 CRUISER
Type	sailing yacht
LOA (m)	11,72
LWL (m)	9,90
Beam (m)	3,90
Draft (m)	1,60
Air draft (m)	16,00
Headroom (m)	1,89
Year built	2008
Builder	Bavaria Yachtbau GmbH
Country	The Netherlands
Designer	J&J Design
Displacement (t)	7,2
Ballast (tonnes)	cast iron 2,1
CE norm	A
Hull material	GRP
Hull colour	white
Hull shape	round-bilged
Keel type	tandem keel
Superstructure material	GRP
Deck material	GRP
Deck finish	anti-slip moulded in
Cockpit deck finish	teak
Dorades	2 x
Window frame	aluminium
Window material	polycarbonate
Deckhatch	yes
Portholes	aluminium
Fuel tank (litre)	polyethylene 150
Freshwater tank (litre)	polyethylene 210 + 150



BAVARIA 38 CRUISER

Blackwater tank (litre)	polyethylene 80
Blackwater tank extraction	deck extraction + uw line
Wheel steering	mechanical Lewmar
Emergency tiller	yes
Extra info	wheel pedestal cover

ACCOMMODATION

Cabins	2
Berths	6
Interior	mahogany
Floor	woodprint
Saloon	yes
Headroom saloon (m)	1,89
Heating	diesel ducted hot air Webasto Evo 3900
Chart table	yes
Dinette	yes
Galley	yes
Countertop	plastic
Sink	stainless steel 2 x
Cooker	calor gas Bavaria 2 burner
Oven	Bavaria
Microwave	Siemens 220v
Fridge	Weaco 12v
Hot water system	220V + engine Quick
Water pressure system	electrical
Owners cabin	double bed Forward / voor / vorne
Bed length (m)	2,05 x 1,60
Wardrobe	hanging/drawers/shelves
Bathroom	shared I
Toilet	shared
Toilet system	manual



BAVARIA 38 CRUISER

Wash basin	in the bathroom
Shower	yes
Guest cabin 1	double bed
Bed length (m)	2,00 x 1,60
Wardrobe	hanging and shelves
Extra info	With the two cabin layout the ownercabin forward offer much more space and comfort.
Extra info	Ownercabin with Neptune mattress and slatted bed base

MACHINERY

No of engines	1
Make	Volvo Penta
Type	D1-30
HP	28,00
kW	20,58
Fuel	diesel
Year installed	2008
Maximum speed (kn)	7,5
Cruising speed (kn)	6
Consumption (l/hr)	3
Engine hours	430
Engine cooling system	freshwater heat exchanger
Drive	sail-drive
Engine controls	bowden cable
Gearbox	mechanical Volvo Penta S130S saildrive
Bowthruster	electric Vetus 75kgf
Exhaust	watercooled
Propeller type	fixed
Propeller blades	3
Manual bilge pump	yes
Electric bilge pump	yes



BAVARIA 38 CRUISER

Electrical installation	12/220v
Start battery	1 x 65amp
Service battery	2 x 135amp
Bowthruster battery	1 x
Battery monitor	yes
Battery charger	Mastervolt 12v/25amp
Inverter	Victron 12v/350watt
Shorepower	with cable
Extra info	Saildrive seal 2008

NAVIGATION

Compass	Plastimo Olympic 135
Electric compass	via autopilot
Depth sounder	Raymarine ST60 Tridata
Log	Raymarine ST60 Tridata
Windset	Raymarine ST60
VHF	with cockpit connection Raymarine Ray240E
Autopilot	Raymarine ST6002
Rudder angle indicator	via autopilot
Radar/GPS/plotter	Raymarine C70
Electronic chart(s)	1 x

EQUIPMENT

Sprayhood	yes
Bathing platform	fold down (actuators need to be replaced)
Boarding ladder	stainless steel
Deck shower	hot+cold
Anchor	CQR Plough 15kg
Anchor chain	with line
Sea railing	stainless steel
Pushpit	yes



BAVARIA 38 CRUISER

Pulpit	yes
Lifebuoy	yes
Fenders	yes
Mooring lines	yes
TV	no receiver Sony
Radio-cd player	JVC
Cockpit speakers	yes
Speakers in salon	yes

RIGGING

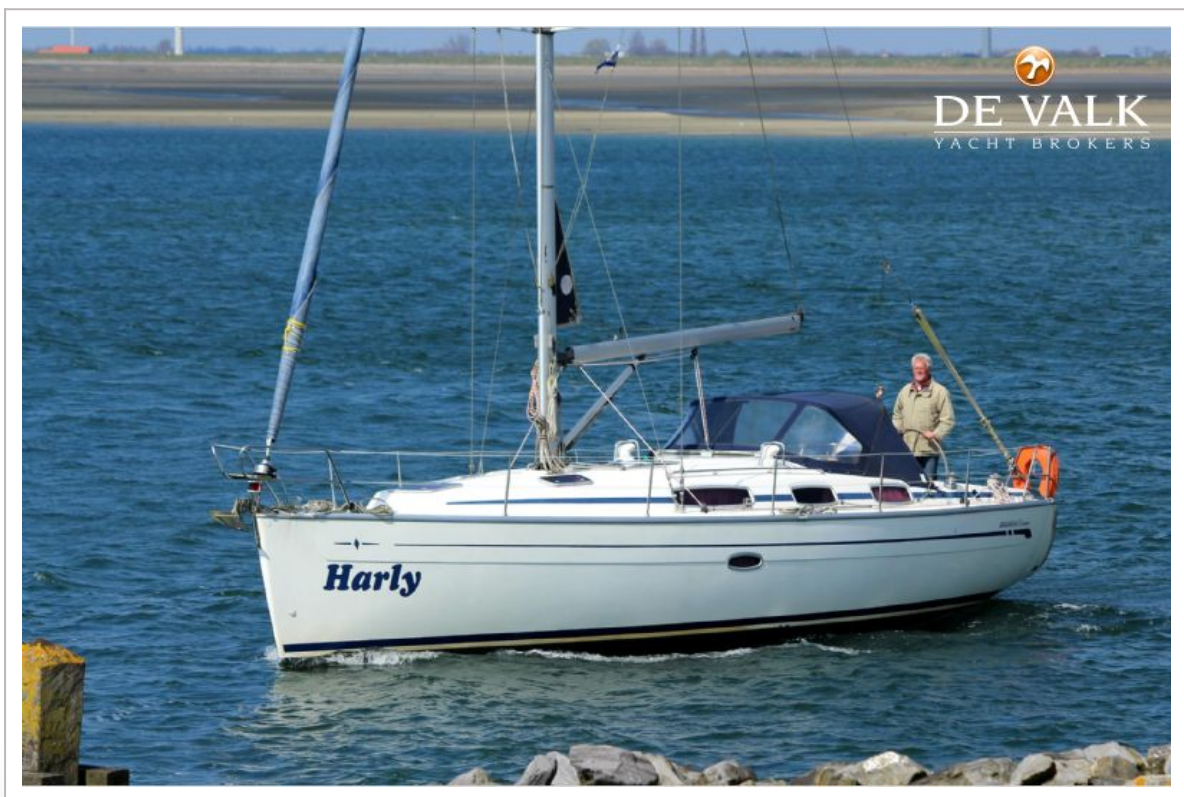
Rigging	sloop
Standing rigging	wire
Brand mast	Seldén
Material mast	aluminium
Spreaders	2 x
Mainsail	Elvstrom HT Sails (2008) 29m2
Genoa	with UV strip Elvstrom HT Sails (2008) 40m2
Reefing System	main in-mast furling
Backstay adjuster	tackle
Boomvang	mechanical Seldén Rodkicker
Secondary sheet winch	for German Sheeting mainsheet 2 x Lewmar 40CST
Genoa sheetwinches	2 x Lewmar 40CST
Halyard winches	2 x Lewmar 30CST
Extra info	spinnaker halyard



BAVARIA 38 CRUISER



BAVARIA 38 CRUISER



BAVARIA 38 CRUISER



BAVARIA 38 CRUISER



BAVARIA 38 CRUISER



BAVARIA 38 CRUISER



BAVARIA 38 CRUISER



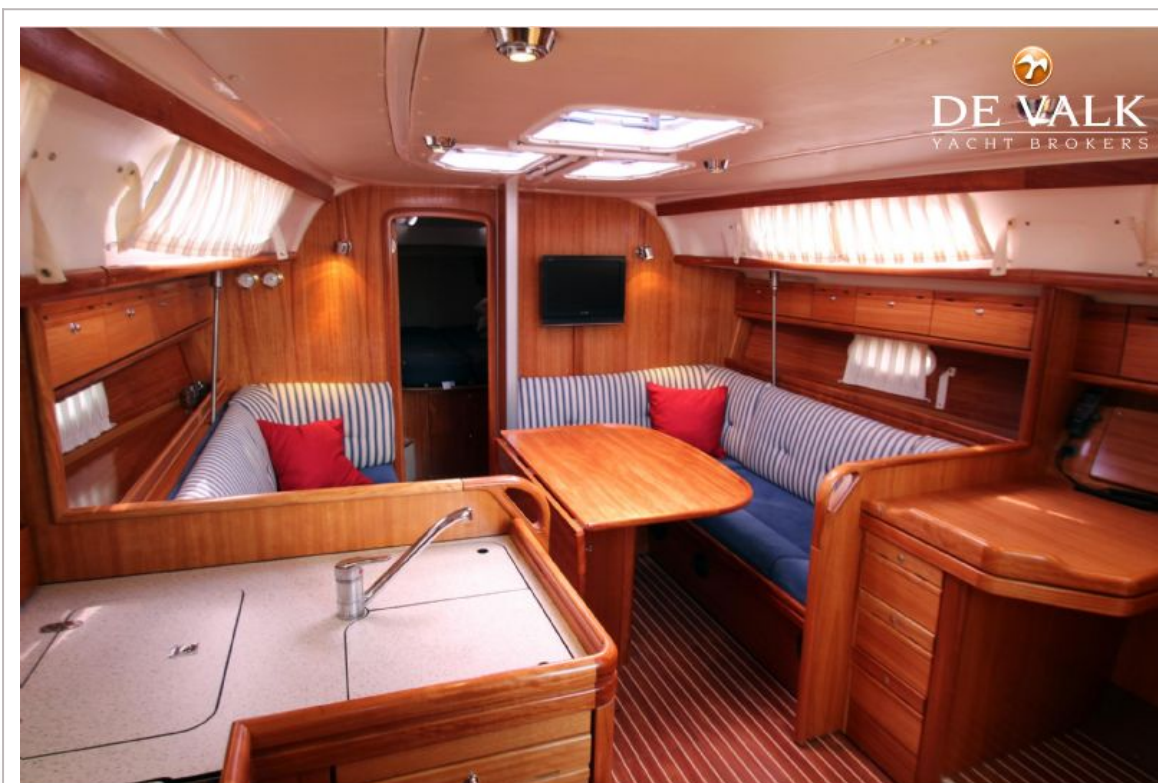
BAVARIA 38 CRUISER



BAVARIA 38 CRUISER



BAVARIA 38 CRUISER



BAVARIA 38 CRUISER



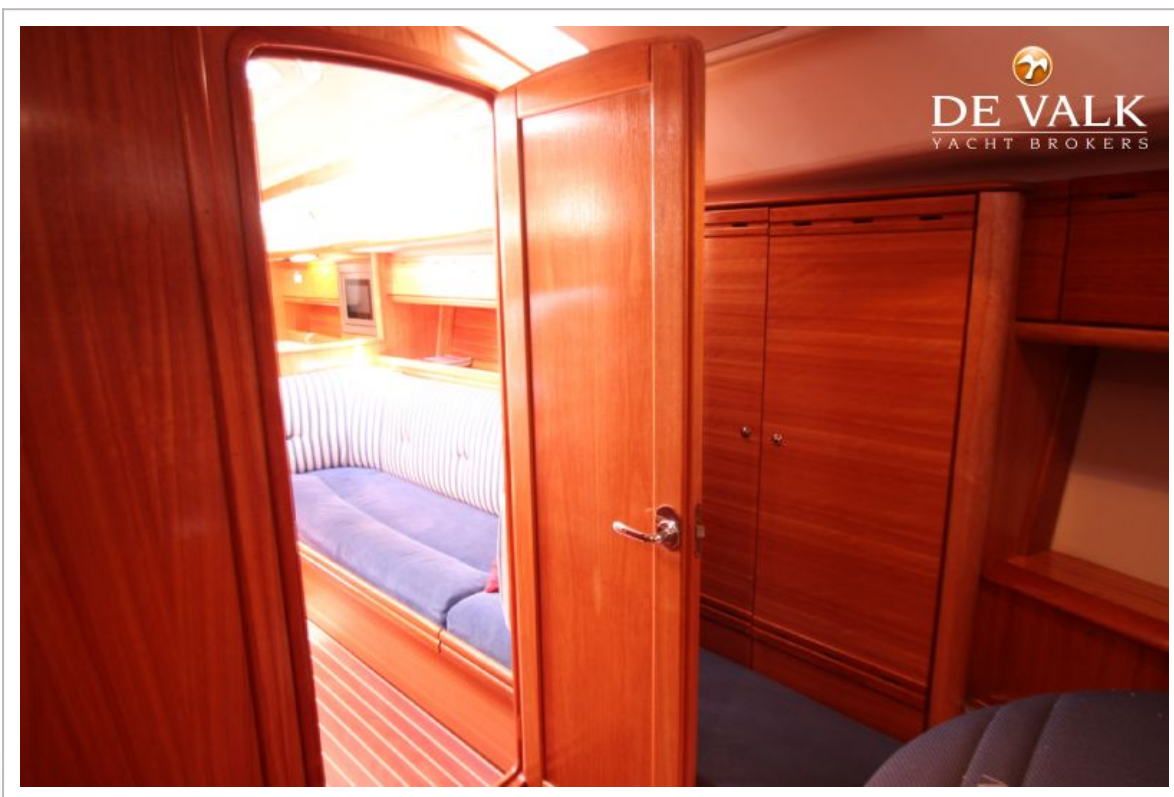
BAVARIA 38 CRUISER



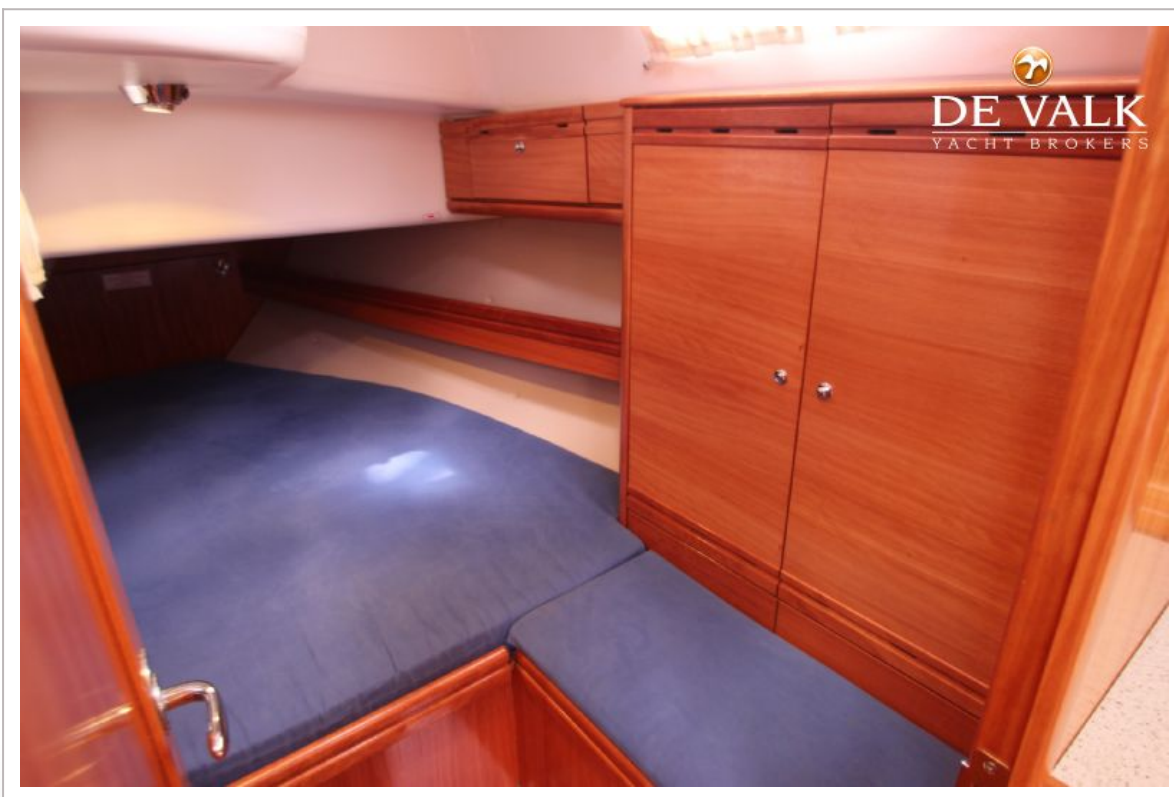
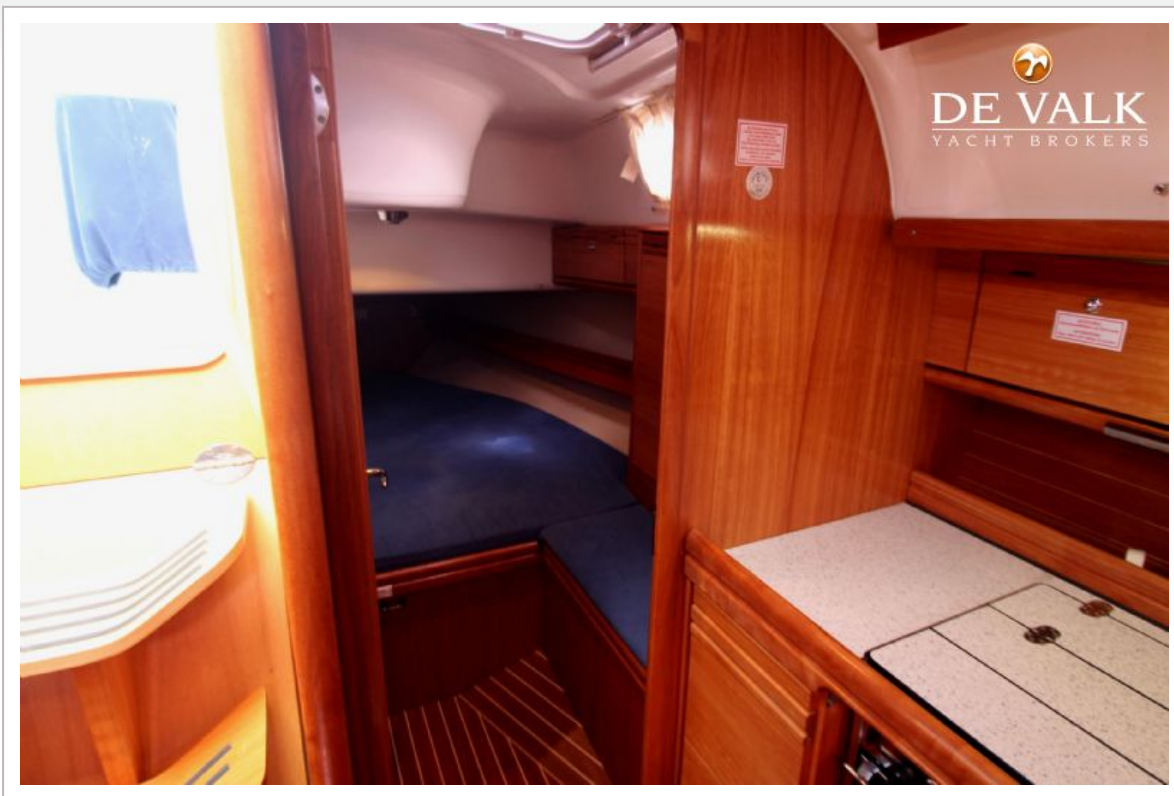
BAVARIA 38 CRUISER



BAVARIA 38 CRUISER



BAVARIA 38 CRUISER



BAVARIA 38 CRUISER



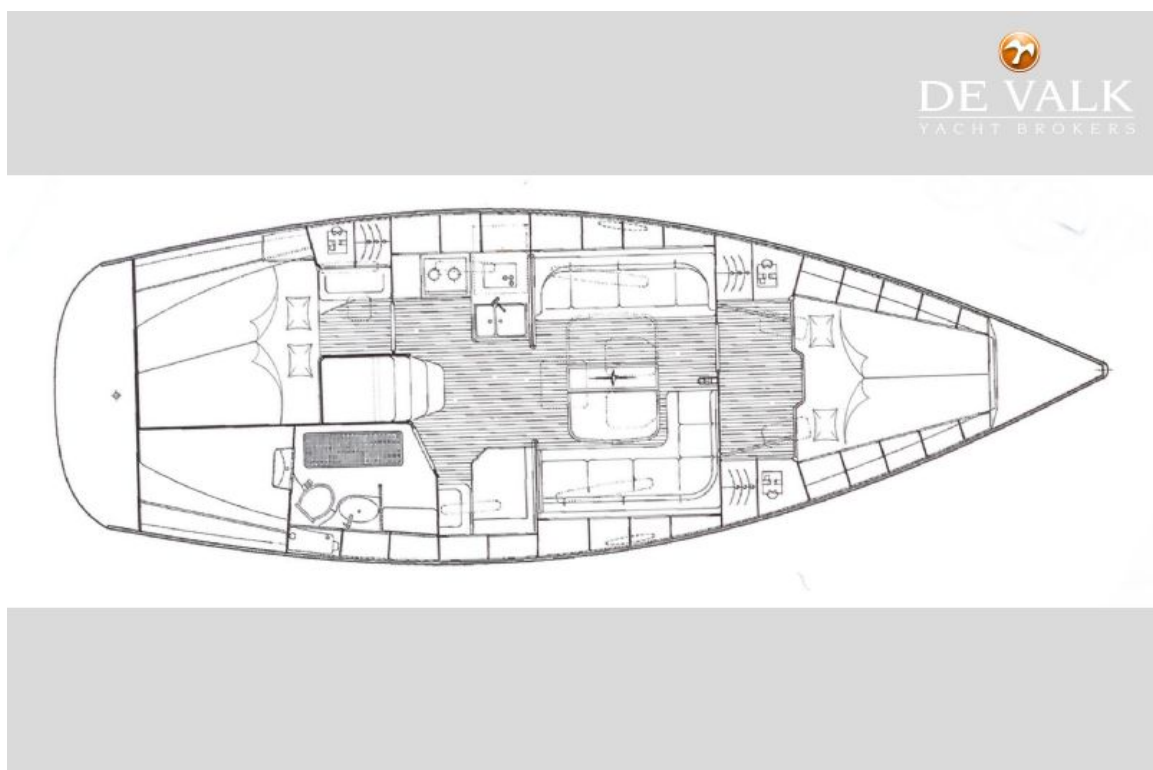
BAVARIA 38 CRUISER



BAVARIA 38 CRUISER

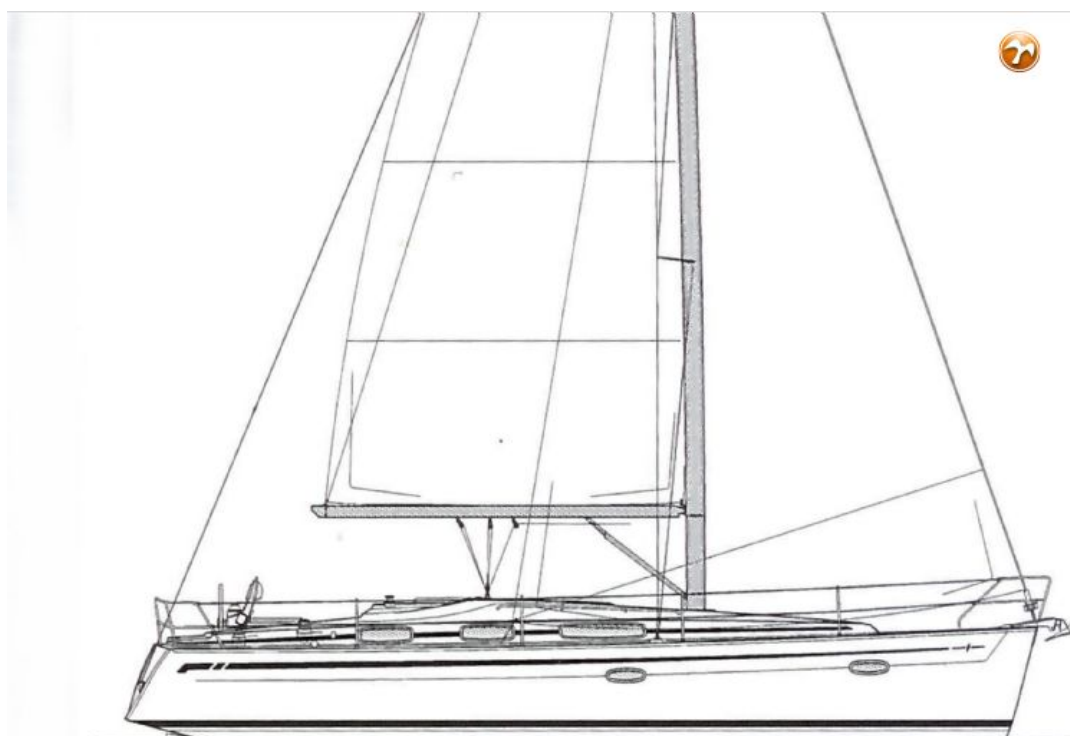
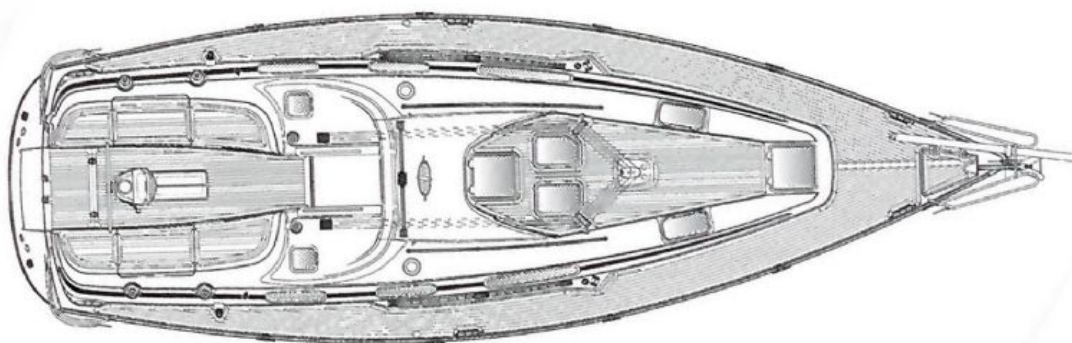


BAVARIA 38 CRUISER

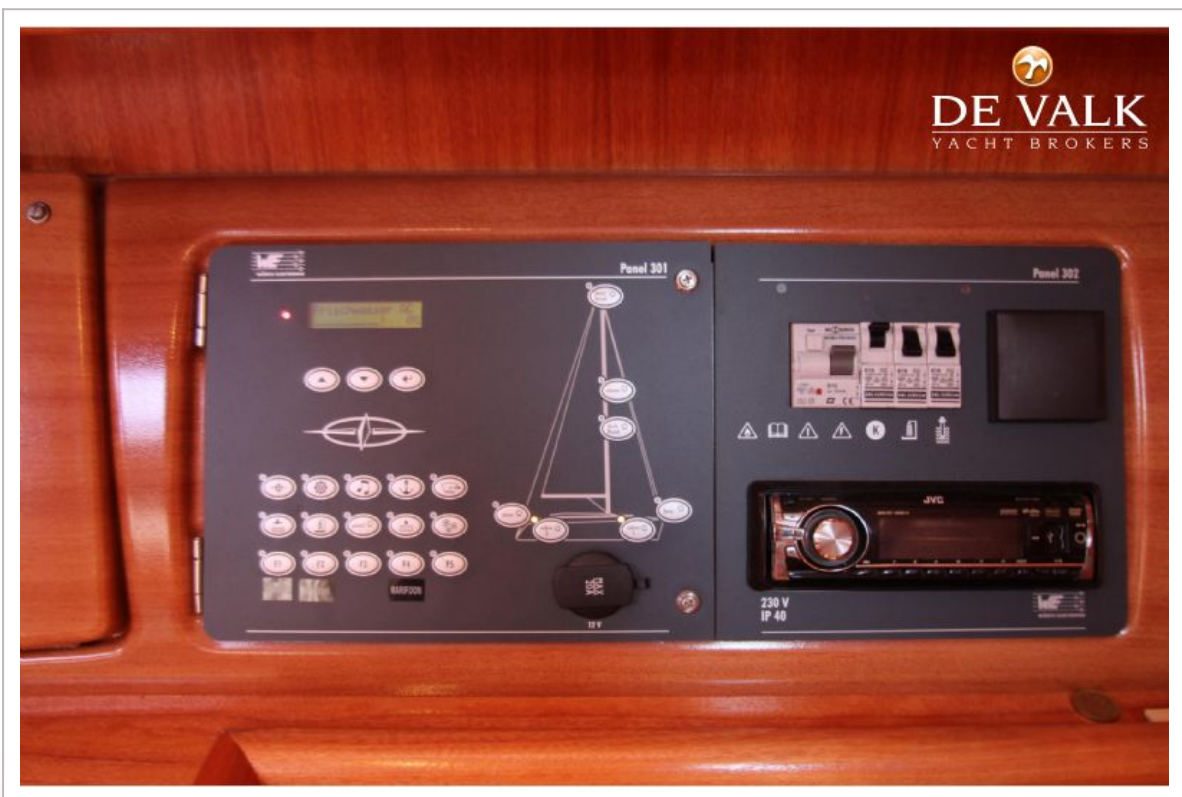
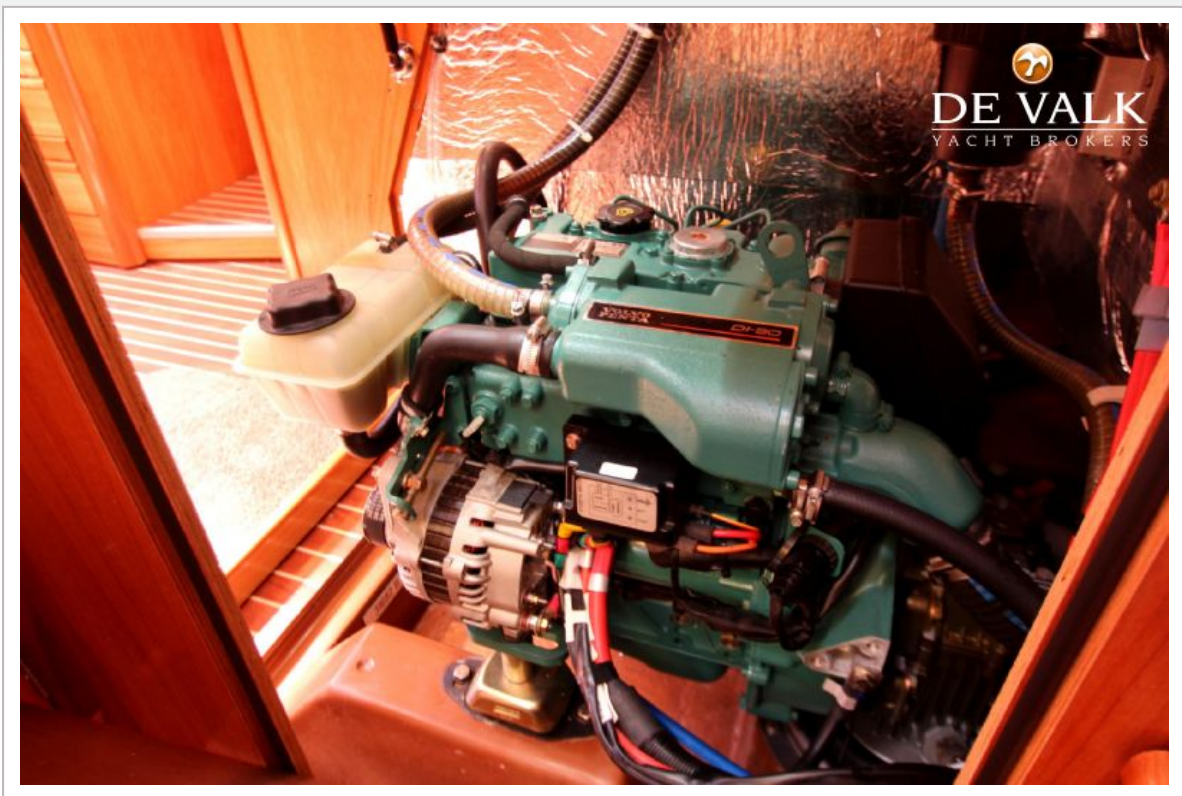


BAVARIA 38 CRUISER


DE VALK
YACHT BROKERS



BAVARIA 38 CRUISER



BAVARIA 38 CRUISER

