



DE VALK
YACHT BROKERS



BAVARIA 47 CUSTOM LINE



DE VALK
YACHT BROKERS

BROKERAGE | CHARTER | BERTHS | FINANCE | INSURANCE | YACHT MANAGEMENT

BAVARIA 47 CUSTOM LINE

BROKER'S COMMENTS

Bavaria 47 is a J&J design, this Custom Line version comes with good equipment list and options. The four cabin lay can be changed into three. Privacy and stowage space for longer stays onboard and extensive cruising with family and friends. With a medium deep keel and full batten main with an easy going bat car system, cutter stay and runners is "Challenger" a good performer and easy to handle when there is some more wind. Delivery with or without VAT possible

Ger Bayens

SPECIFICATIONS

Dimensions	14.68 x 4.45 x 2.00 (m)	Builder	Bavaria Yachtbau GmbH
Built	2001	Cabins	4
Material	GRP	Berths	9
Engine(s)	1 x Volvo Penta MD 22 diesel	Hp/Kw	59.00 (hp), 43.00 (kw)
Asking price	sold (VAT)	Lying	at sales office

CONTACT

Sales office	De Valk Sint Annaland B.V.	Telephone	+31 (0)166 601 000
Address	Koelhuisweg 4 4697 RM Sint Annaland NL	E-mail	sintannaland@devalk.nl

DISCLAIMER

These particulars are given in good faith as supplied but cannot be guaranteed.



GENERAL

Model	BAVARIA 47 CUSTOM LINE
Type	sailing yacht
LOA (m)	14,68
LWL (m)	11,95
Beam (m)	4,45
Draft (m)	2,00
Air draft (m)	19,40
Headroom (m)	1,97
Year built	2001
Builder	Bavaria Yachtbau GmbH
Country	Germany
Designer	J & J Design
Displacement (t)	11,5
Ballast (tonnes)	cast iron 3,7
CE norm	A
Hull material	GRP
Hull colour	blue
Rubbing strake	stainless steel
Deck material	GRP
Deck finish	teak
Superstructure deck finish	teak
Cockpit deck finish	teak
Antifouling (year)	2015
Dorades	1x
Window frame	stainless steel
Window material	polycarbonate
Deckhatch	7x
Portholes	stainless steel
Fuel tank (litre)	polyethylene 210
Freshwater tank (litre)	polyethylene 490



Level indicator (freshwater)	yes
Wheel steering	mechanical Twin
More info on hull	yes
More info on paintwork	Needs refreshment De IJsel DD epoxy paint
Extra info	No Waste tank

ACCOMMODATION

Cabins	4
Berths	9
Interior	mahogany
Layout	4 cabins, 3 heads, 1 saloon
Floor	teak and holly
Saloon	yes
Headroom saloon (m)	1,97
Heating	diesel ducted hot air Webasto 5 KW 2015
Chart table	yes
Aft Cabin	2x
Dinette	yes
Convertible berth	in saloon
Galley	yes
Countertop	plastic
Sink	stainless steel 2x
Cooker	calor gas 2 flame
Oven	yes
Fridge	yes
Hot water system	220V + engine
Water pressure system	electrical
Coffee maker	yes
Owners cabin	double bed Port side aft
Bed length (m)	2,10 x 1,50
Wardrobe	hanging and shelves



Bathroom	en suite
Toilet	en suite
Toilet system	manual
Wash basin	at the toilet
Shower	en suite
Guest cabin 1	double bed Starboard aft
Bed length (m)	2,10 x 1,50
Wardrobe	hanging and shelves
Bathroom	en suite
Toilet	en suite
Toilet system	manual
Wash basin	at the toilet
Shower	en suite
Guest cabin 2	bunk bed Port Side forward
Wardrobe	hanging/drawers/shelves
Bathroom	shared
Toilet	shared
Toilet system	manual
Wash basin	at the toilet
Shower	shared
Guest cabin 3	bunk bed Starboard forward
Bed length (m)	2,05 2x 1,15 & 2,10 x 0,60
Wardrobe	hanging/drawers/shelves
Toilet	shared
Toilet system	manual
Wash basin	at the toilet
Shower	shared

MACHINERY

No of engines	1
Make	Volvo Penta



BAVARIA 47 CUSTOM LINE

Type	MD 22
HP	59,00
kW	43,00
Fuel	diesel
Maximum speed (kn)	8,00
Cruising speed (kn)	7,00
Engine hours	3500
Engine cooling system	freshwater heat exchanger
Drive	sail-drive
Engine controls	bowden cable
Gearbox	mechanical
Exhaust	watercooled
Propeller type	fixed
Propeller blades	3x
Manual bilge pump	yes
Electrical installation	12/220V
Batteries	3x
Start battery	1x 100 Ah 2010
Service battery	2x 120 Ah 4/2016 semi tracti
Battery charger	Mastervolt 12/60
Inverter	Mastervolt
Shorepower	with cable
Extra info	Saildrive seal is not changed in 7 years
Extra info	spare prop semin folding

NAVIGATION

Compass	2x Suunto
Electric compass	on autopilot
Depth sounder	Raytheon ST 60
Log	Raytheon ST 60
Windset	Raytheon ST 60



VHF	with speaker & and connection point at wheel Raymarine 20
Autopilot	Autohelm ST 7000
Rudder angle indicator	at Autohelm ST 7000
Radar/GPS/plotter	Raytheon RL 70C
Electronis chart(s)	needs updated C-Maps
Extra info	Deck light

EQUIPMENT

Sprayhood	Dark blue with stainless steel frame
Cockpit cushions	yes
Cockpit table	yes
Bathing platform	yes
Boarding ladder	stainless steel
Transom door	yes
Anchor	CQR Plough
Anchor chain	yes
Windlass	LowFrance
Capstan	LowFrance
Outboard support	yes
Sea railing	wire
Grab rail (superstructure)	stainless steel
Railing side opening gates	2x
Pushpit	yes
Pulpit	yes
Life raft	valise (or bag) Avon
Life raft (pers)	6
Last life raft survey	2015
Lifebuoy	yes
Danbuoy	yes
Fenders	yes
Mooring lines	yes



TV	LCD
Radio-cd player	yes
DVD player	Microstar
Cockpit speakers	yes
Speakers in salon	yes
Clock - barometer	yes
Fire extinguisher	yes
Latest extinguisher survey	Expired

RIGGING

Rigging	sloop
Standing rigging	wire
Brand mast	Seldén
Material mast	aluminium
Spreaders	2x
Keel stepped mast	No
Mainsail cover	yes
Battcars	yes
Fully battened mainsail	2010
Jib	yes
Genoa II	yes
Stormjib	yes
Reefing System	slabreefing
Backstay adjuster	mechanical Selden
Boomvang	mechanical Selden Rodkicker
Genoa sheetwinches	2x Harken 56.2 ST
Halyard winches	2x Harken 44.2 ST
Reefing winch	1x genoa furling winch HArken 32.2 ST
Spi-pole	aluminium At mast
Extra info	Spinlock Jammers in cockpit
Extra info	Baby stay, runners & spectra cutter stay





BAVARIA 47 CUSTOM LINE



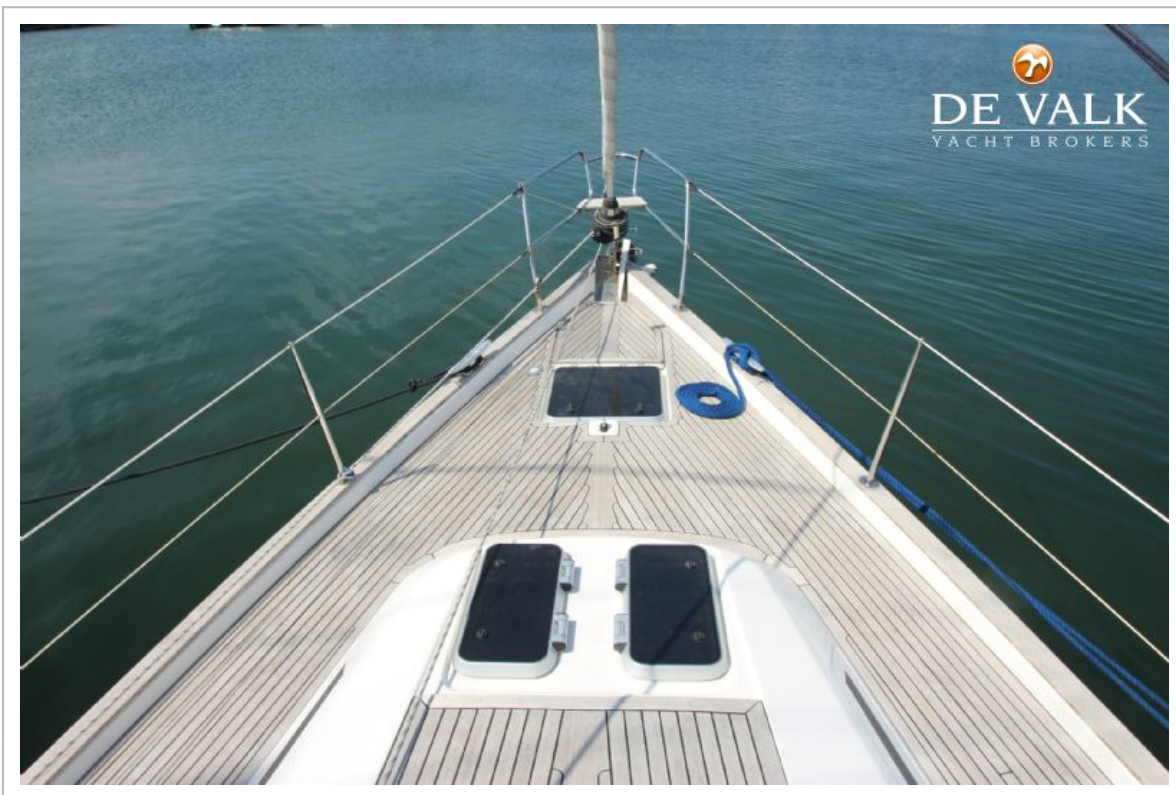
BAVARIA 47 CUSTOM LINE



BAVARIA 47 CUSTOM LINE



BAVARIA 47 CUSTOM LINE



BAVARIA 47 CUSTOM LINE



BAVARIA 47 CUSTOM LINE



BAVARIA 47 CUSTOM LINE



BAVARIA 47 CUSTOM LINE



BAVARIA 47 CUSTOM LINE



BAVARIA 47 CUSTOM LINE



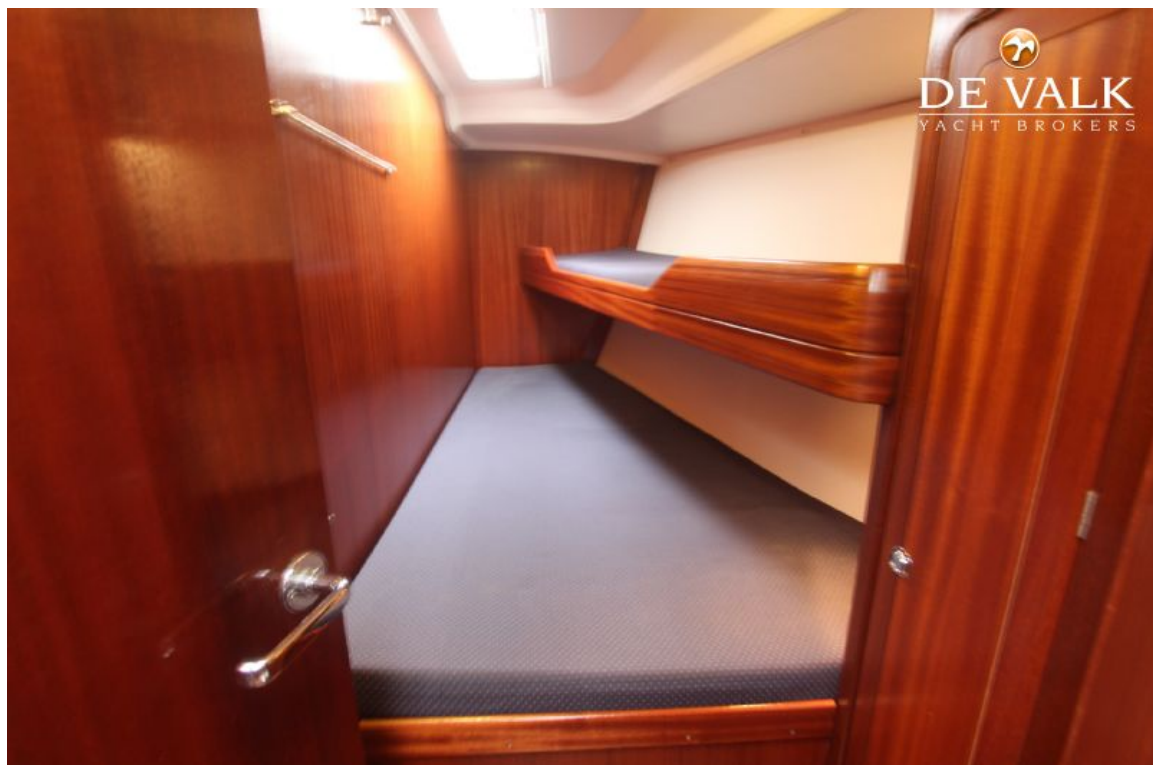
BAVARIA 47 CUSTOM LINE



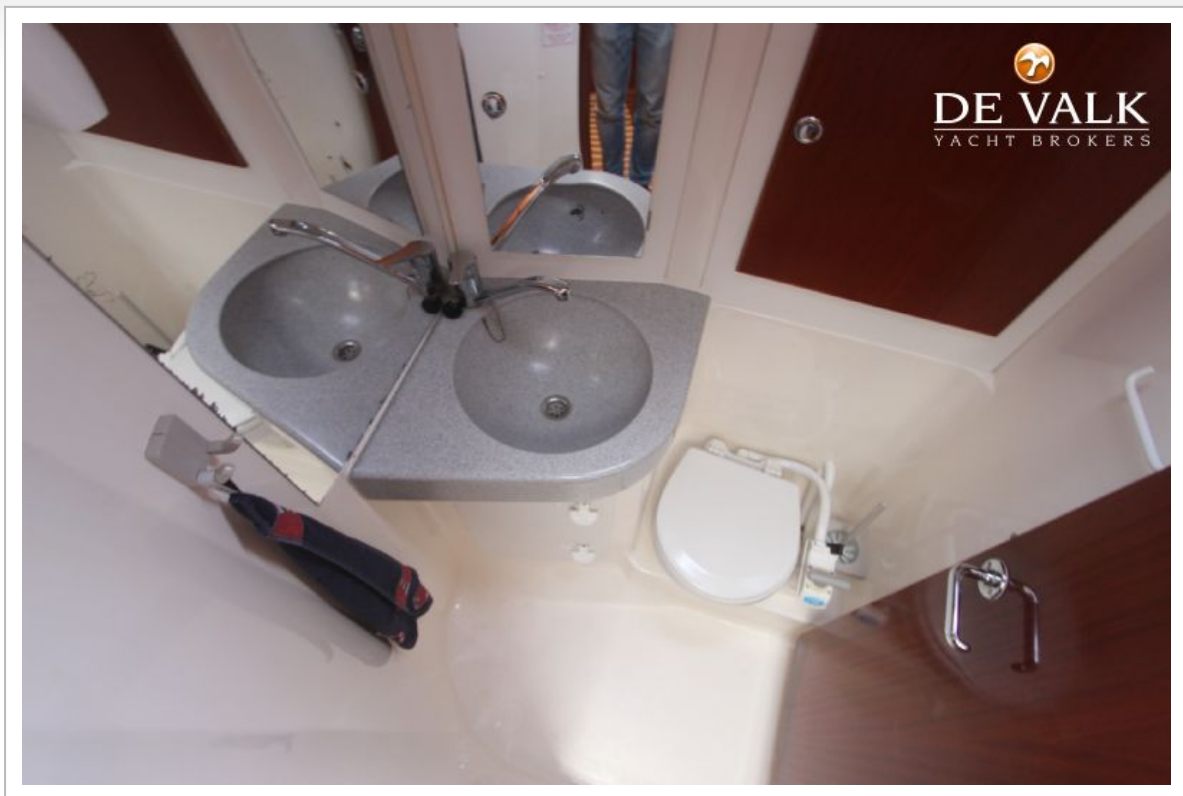
BAVARIA 47 CUSTOM LINE



BAVARIA 47 CUSTOM LINE



BAVARIA 47 CUSTOM LINE



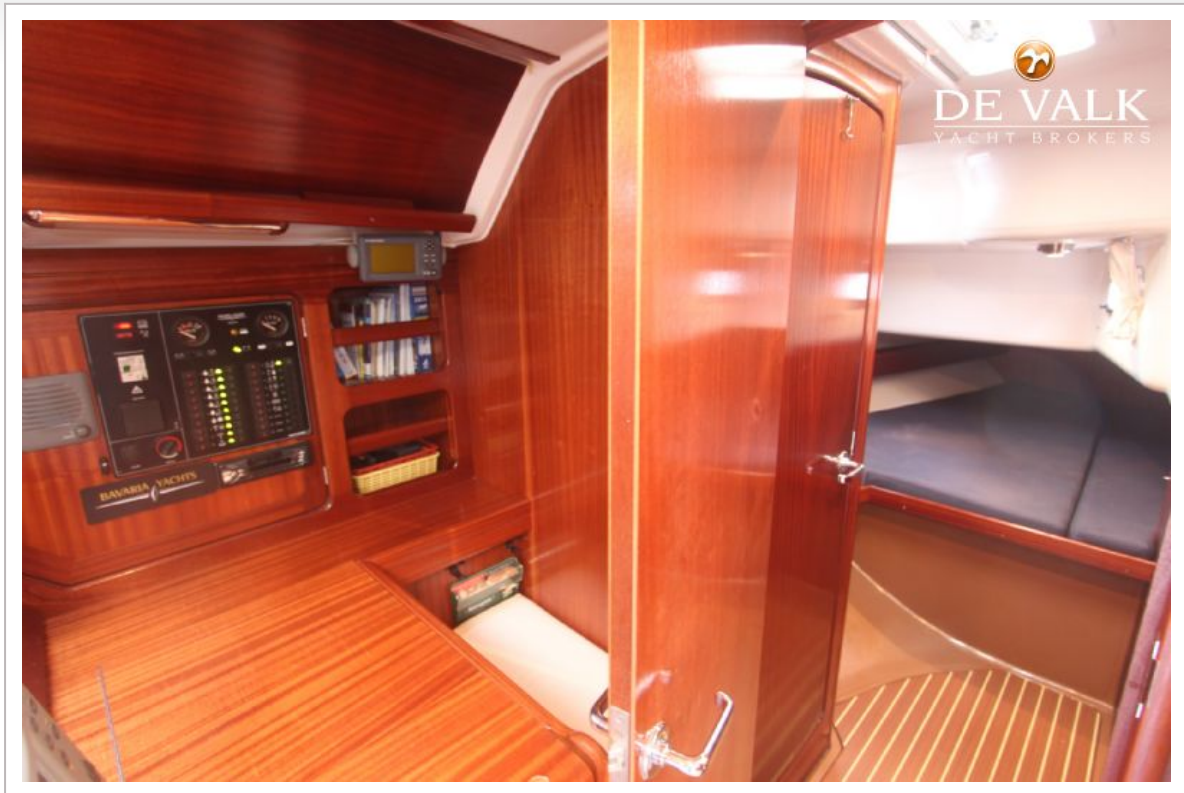
BAVARIA 47 CUSTOM LINE



BAVARIA 47 CUSTOM LINE



BAVARIA 47 CUSTOM LINE



BAVARIA 47 CUSTOM LINE



BAVARIA 47 CUSTOM LINE



BAVARIA 47 CUSTOM LINE

