



DE VALK  
YACHT BROKERS



## AMEL MARAMU 46



DE VALK  
YACHT BROKERS

# AMEL MARAMU 46

## BROKER'S COMMENTS

This Maramu is the most beautiful Amel on the market, great no nonsense blue water cruiser in an excellent condition. Being an Amel she is constructed to a very high standard, safe and strong, and very low maintenance. Well equipped for long distance cruising single handed or with the family. The genoa furler, main sail are electric, sheetwinches oversized and thus easy to handle in all conditions. You should definitely see this ship if you want to make a long trip.

*Sander van der Voorn*

## SPECIFICATIONS

<b>Dimensions</b>	13.80 x 3.98 x 1.98 (m)	<b>Builder</b>	Chantier Amel
<b>Built</b>	1988	<b>Cabins</b>	2
<b>Material</b>	GRP	<b>Berths</b>	6
<b>Engine(s)</b>	1 x Perkins Sabre M60 diesel	<b>Hp/Kw</b>	60.00 (hp), 44.10 (kw)
<b>Asking price</b>	sold (VAT )	<b>Lying</b>	at sales office

## CONTACT

<b>Sales office</b>	De Valk Monnickendam B.V.	<b>Telephone</b>	+31 (0)299 65 63 50
<b>Address</b>	Hoogedijk 6 1145 PM Katwoude NL	<b>E-mail</b>	monnickendam@devalk.nl

## DISCLAIMER

These particulars are given in good faith as supplied but cannot be guaranteed.



## GENERAL

Model	AMEL MARAMU 46
Type	sailing yacht
LOA (m)	13,80
LWL (m)	10,90
Beam (m)	3,98
Draft (m)	1,98
Year built	1988
Builder	Chantier Amel
Country	France
Designer	Henry Amel & J. Carteau
Displacement (t)	12,9
Ballast (tonnes)	3,5
Hull material	GRP
Hull colour	off-white
Hull shape	round-bilged
Keel type	fin keel
Superstructure material	GRP
Rubbing strake	rubber White
Deck material	GRP
Deck finish	synthetic teak
Superstructure deck finish	non-skid moulded in
Cockpit deck finish	synthetic teak
Window frame	stainless steel
Window material	polycarbonate
Deckhatch	3x goyo
Fuel tank (litre)	stainless steel 480
Freshwater tank (litre)	GRP 999
Level indicator (freshwater)	yes
Wheel steering	cable steering
Emergency tiller	yes



## ACCOMMODATION

Cabins	2
Berths	6
Interior	teak
Floor	teak and holly
Open cockpit	yes
Aft deck	yes
Saloon	yes
Headroom saloon (m)	2,00
Heating	diesel ducted hot air Webasto
Air-conditioning	single cycle airco Operation unknown
Navigation center	yes
Chart table	yes
Aft Cabin	yes
Dinette	yes
Convertible berth	yes
Sliding door to cockpit	yes
Galley	yes
Countertop	wood Stainless steel
Sink	stainless steel 2
Cooker	calor gas EON 2 burner
Oven	EON
Fridge	Frigomatic
Freezer	In Fridge
Hot water system	220V + engine
Water pressure system	electrical
Manual and/or foot pump	yes
Owners cabin	double bed
Bed length (m)	2,00
Wardrobe	hanging and shelves
Bathroom	separate



Toilet	shared
Toilet system	manual Raske
Wash basin	in the bathroom
Shower	shared
Guest cabin 1	double bed
Bed length (m)	2,00
Wardrobe	hanging and shelves
Bathroom	separate
Toilet	shared
Toilet system	manual Raske
Wash basin	in the bathroom
Shower	shared

## MACHINERY

No of engines	1
Make	Perkins Sabre
Type	M60
HP	60,00
kW	44,10
Fuel	diesel
Year installed	1988
Maximum speed (kn)	8
Cruising speed (kn)	7
Engine hours	2610
Engine cooling system	freshwater heat exchanger
Drive	shaft
Shaft seal	Volvo seal
Engine controls	bowden cable
Gearbox	hydraulic
Bowthruster	electric
Exhaust	watercooled



<b>Propeller type</b>	fixed
<b>Propeller blades</b>	3
<b>Propeller shaft material</b>	stainless steel
<b>Shaft lubrication</b>	water
<b>Manual bilge pump</b>	yes
<b>Electric bilge pump</b>	yes
<b>Electrical installation</b>	yes
<b>Start battery</b>	2 x 105 Ah (2017)
<b>Service battery</b>	4 x 105 Ah (2017)
<b>Battery monitor</b>	Magnetronic DCC2000
<b>Battery charger</b>	Victron Energy Phoenix 12 volt 50 Amp. (2017)
<b>Solar panel</b>	yes
<b>Diode battery combiners</b>	yes
<b>Shorepower</b>	with cable

## NAVIGATION

<b>Compass</b>	Olimpic 135
<b>Depth sounder</b>	B7G Synchro, Clipper, B&G HECTA Sting Ray Hornet
<b>Log</b>	B&G Synchro
<b>Windset</b>	B7G Synchro
<b>VHF</b>	Sailer compact VHF RT2047
<b>Autopilot</b>	Autohelm 6000
<b>Radar</b>	Furuno
<b>GPS</b>	Shipmate RS 5500
<b>Plotter</b>	Lorenz
<b>Weather receiver</b>	Radio telex
<b>Navtex</b>	Clipper weatherman
<b>Electronic chart(s)</b>	yes
<b>EPIRB</b>	yes
<b>Navigation lights</b>	yes
<b>Searchlight</b>	yes



## Extra info

B&G Hornet 4 sailing monitor

## EQUIPMENT

Fixed windscreen	yes
Fixed hardtop	yes
Cockpit cushions	yes
Cockpit table	yes
Boarding ladder	stainless steel
Gangway	yes
Anchor	yes
Anchor chain	yes
Anchor 2	yes
Other ground tackle	Anchor was instalation
Davits	stainless steel
Davits controls	manual
Sea railing	stainless steel
Grab rail (superstructure)	stainless steel
Pulpit	yes
Radar reflector	yes
Fenders	yes
Mooring lines	yes
Spare parts	yes
Radio-cd player	Grundig S1010
Speakers in salon	yes
Clock - barometer	Plastimo

## RIGGING

Rigging	ketch
Standing rigging	Rod
Brand mast	Nirvana
Material mast	aluminium coated



Spreaders	2 x
Mainsail	Incidences (2015)
Stoway mast	Electrical operation
Mizzen	Incidences (2015)
Genoa	(2013)
Genoa furler	Electric
Reefing System	main in-boom furling Electric
Primary sheet winch	Main Sheet 1 x 30 ST
Secondary sheet winch	3 x Lewmar 30 ST
Genoa sheetwinches	2 x Lewmar ST 52
Halyard winches	2 x Lewmar 40 ST
Spi-pole	aluminium 2x Amel system
Jockey-pole	aluminium 2x Amel system





# AMEL MARAMU 46



# AMEL MARAMU 46





# AMEL MARAMU 46



# AMEL MARAMU 46

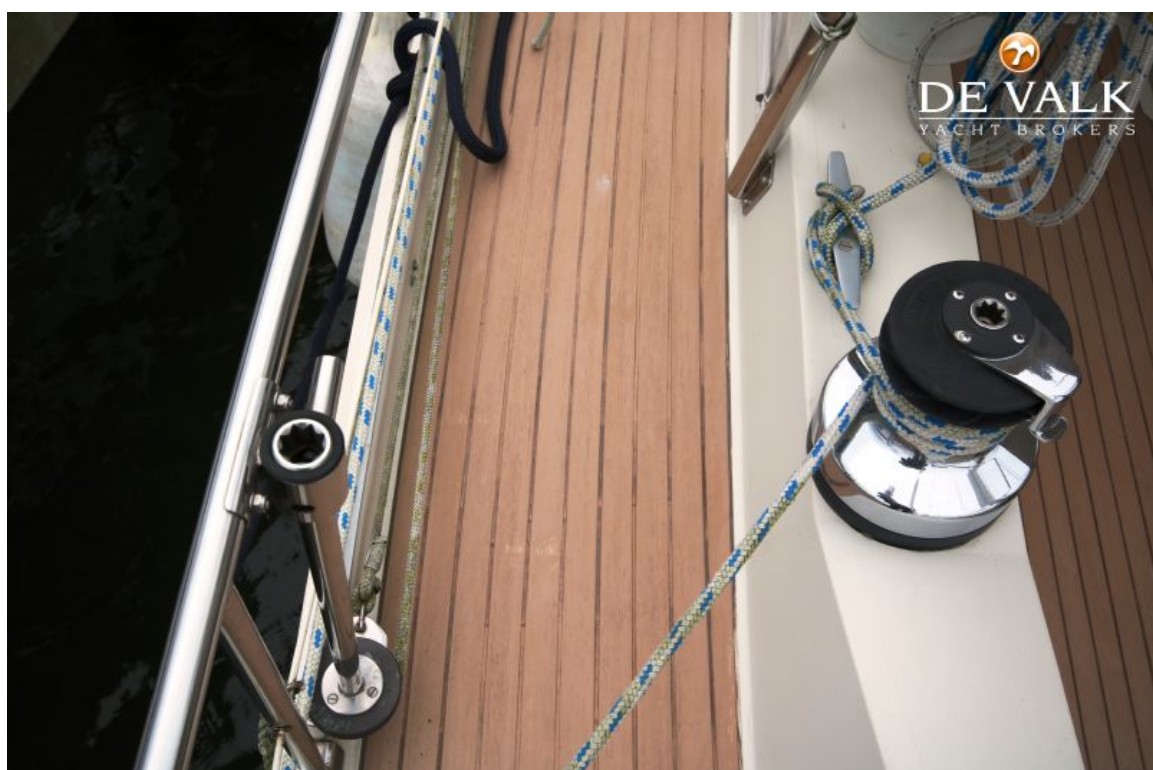




# AMEL MARAMU 46



# AMEL MARAMU 46

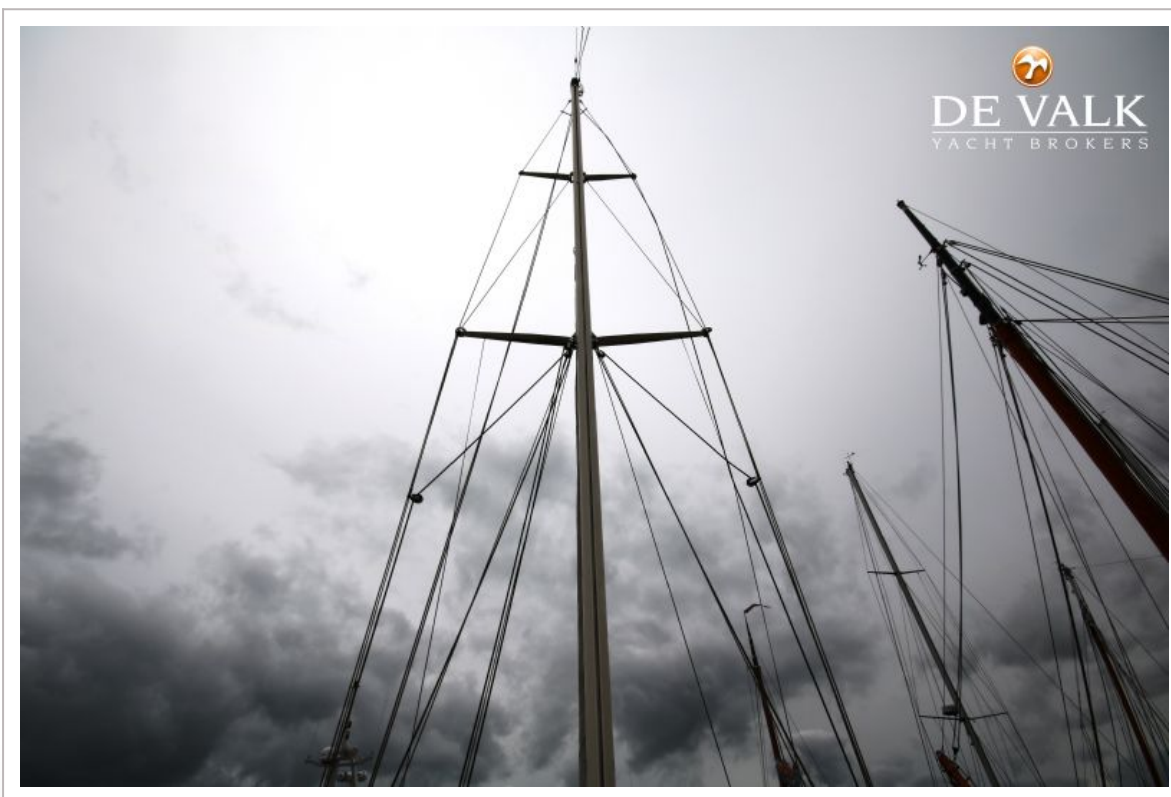
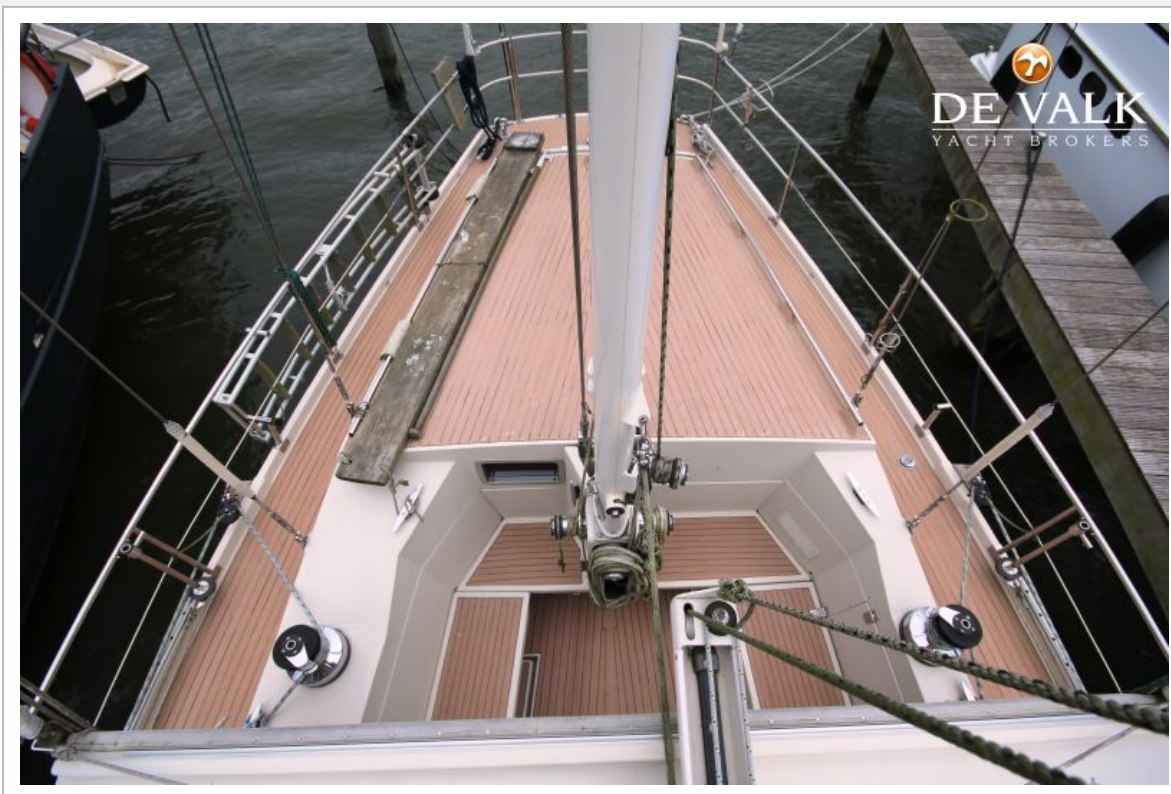




# AMEL MARAMU 46

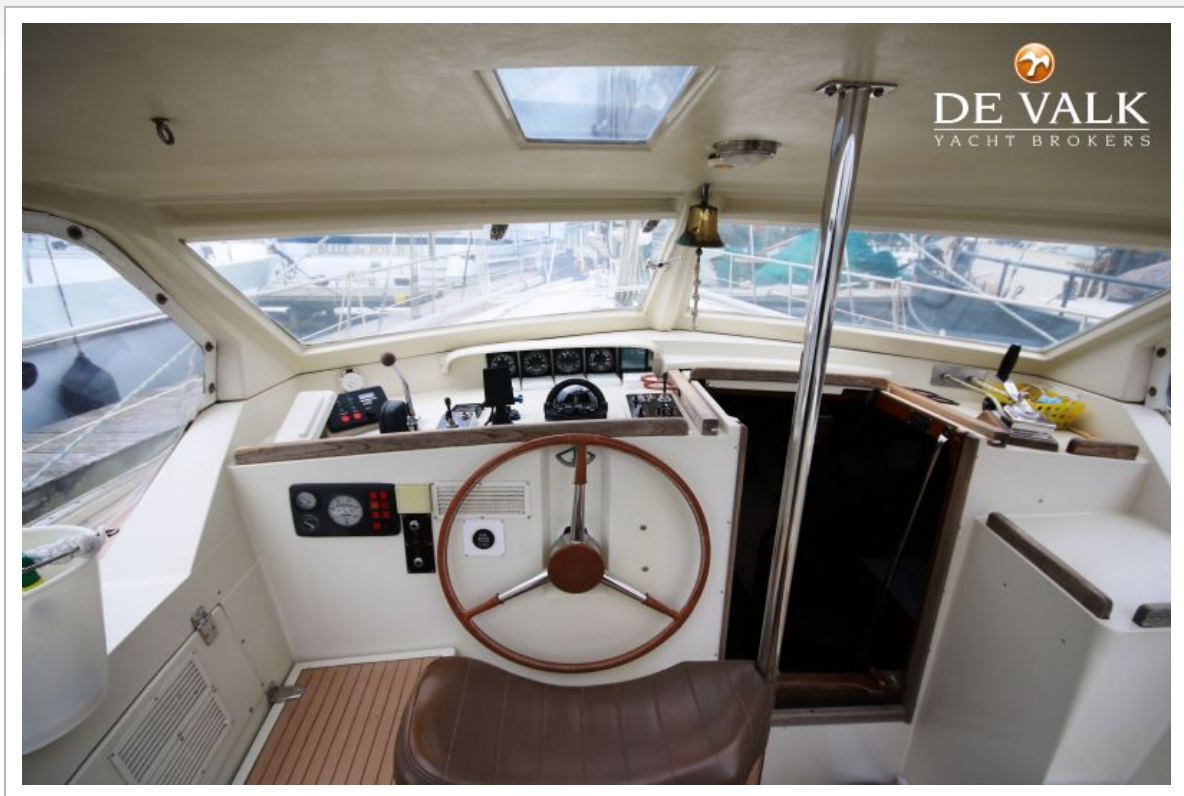


# AMEL MARAMU 46

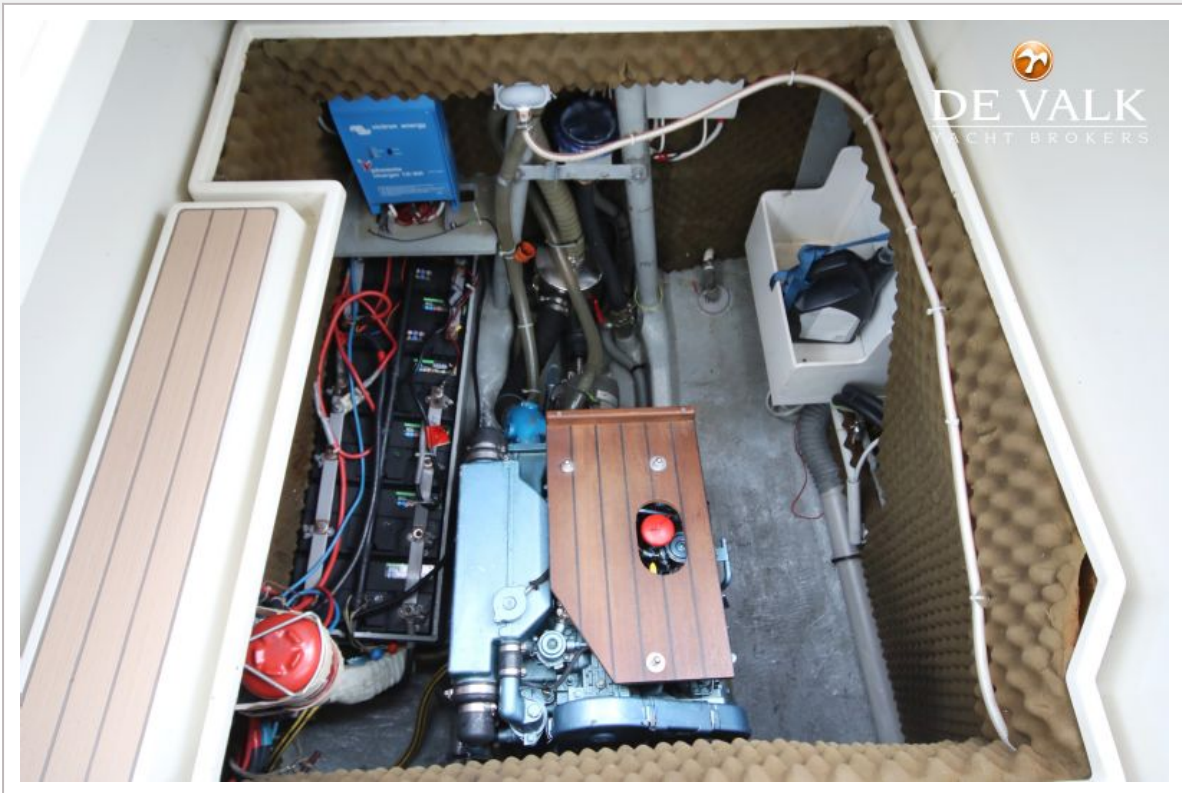




# AMEL MARAMU 46



# AMEL MARAMU 46





# AMEL MARAMU 46



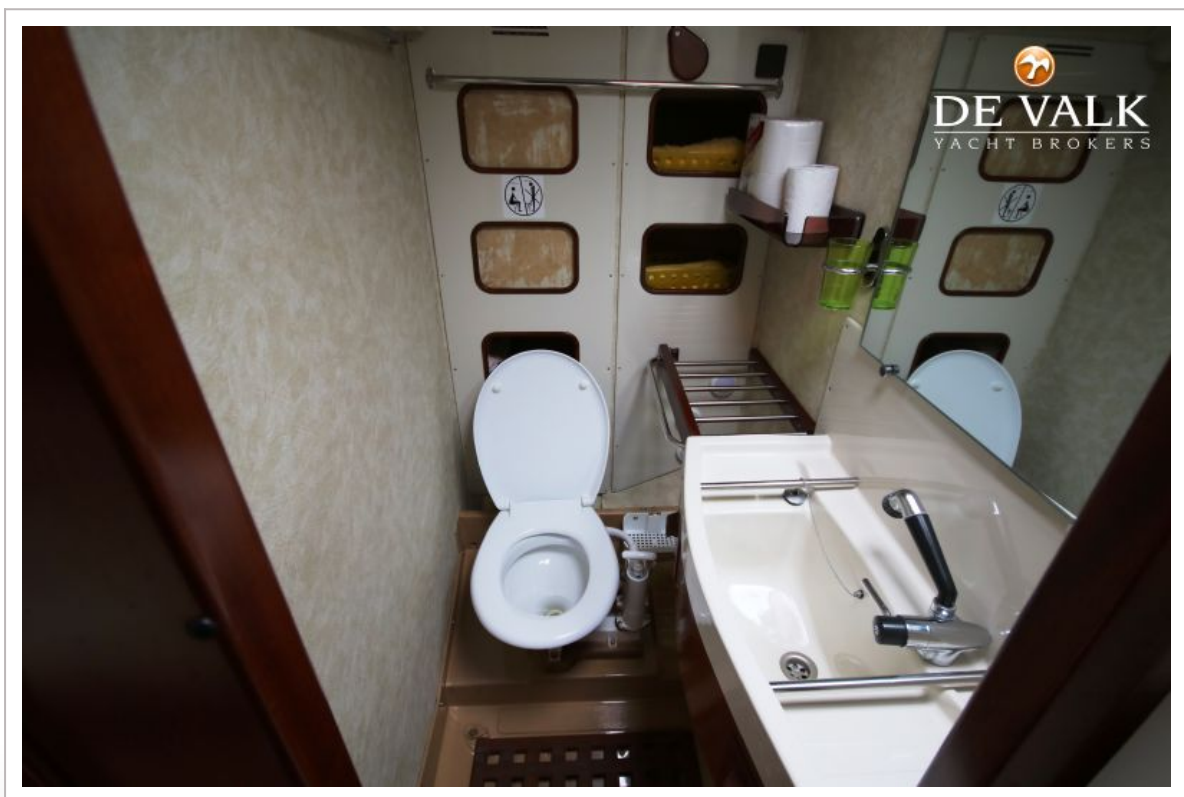
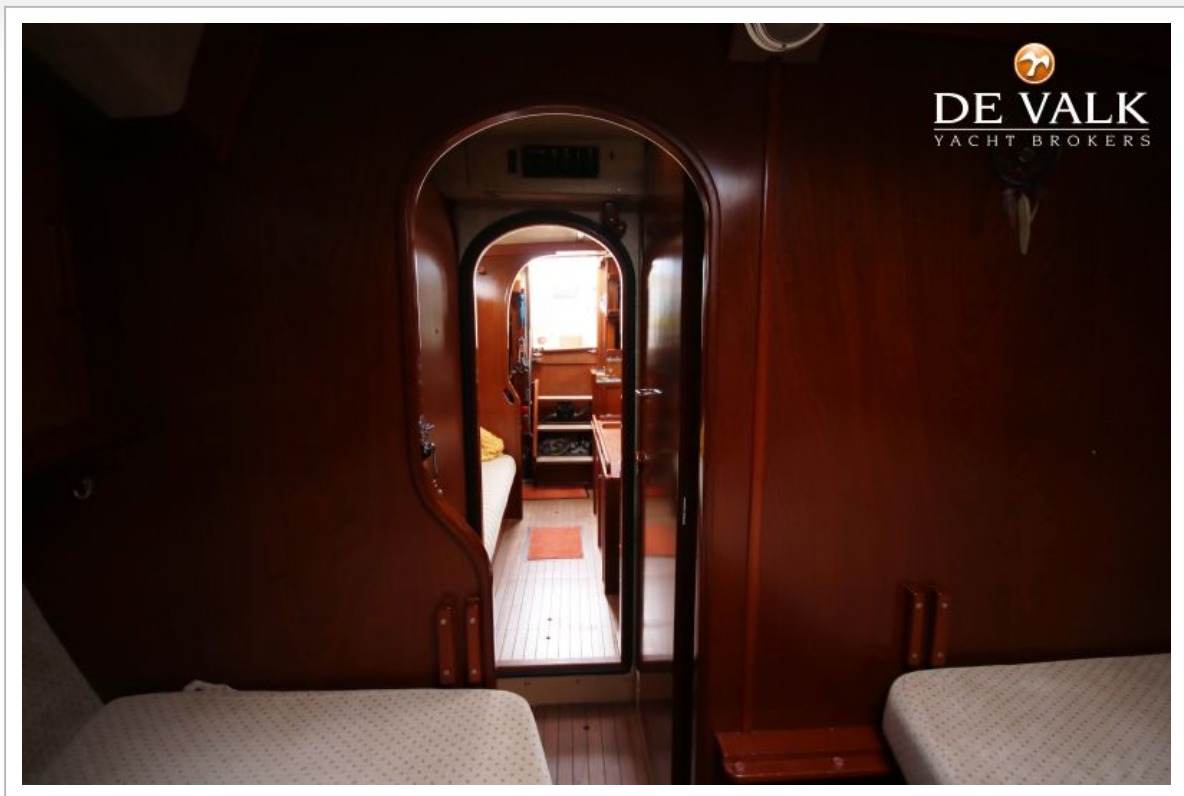
# AMEL MARAMU 46





# AMEL MARAMU 46



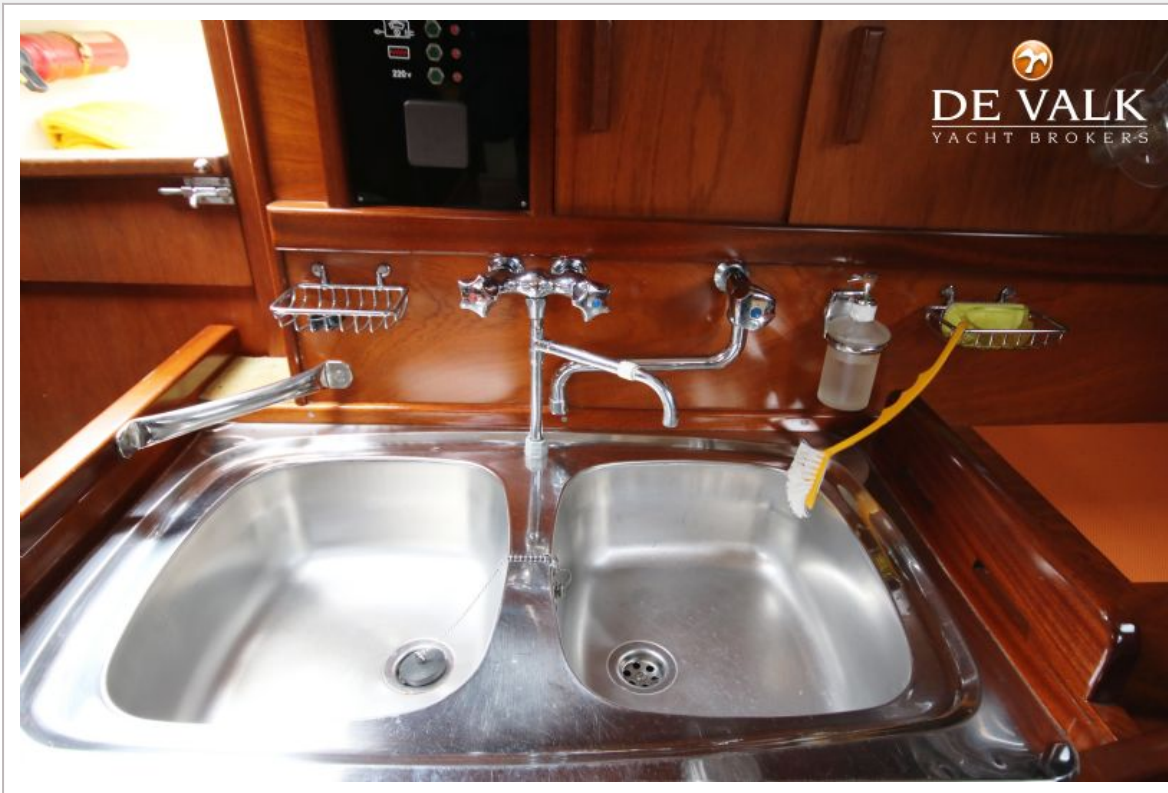




# AMEL MARAMU 46



# AMEL MARAMU 46

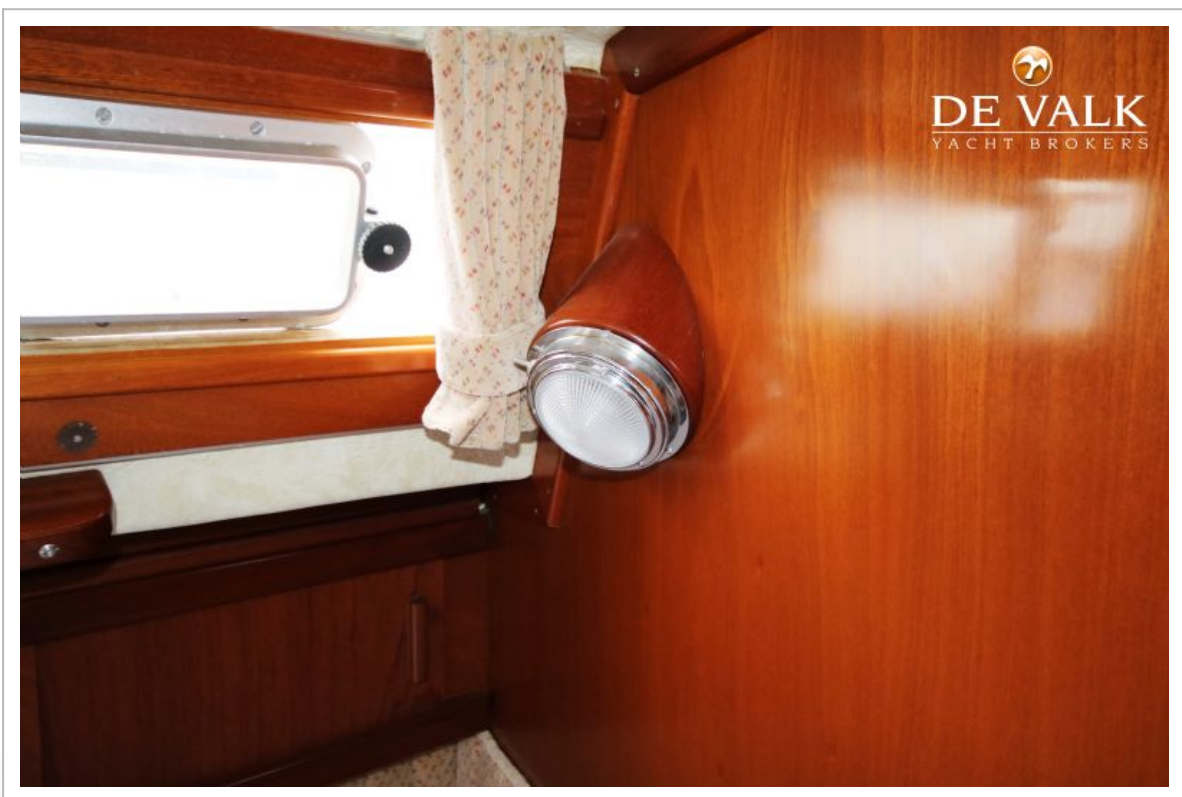




# AMEL MARAMU 46



## AMEL MARAMU 46



# AMEL MARAMU 46

