



DE VALK  
YACHT BROKERS



## JEANNEAU 36.2



DE VALK  
YACHT BROKERS

# JEANNEAU 36.2

## BROKER'S COMMENTS

Fast family cruising yacht with a spacious interior. This Jacques Faroux design excels in performance and handling with sleek lines and well thought out deck layout. She has proven herself to be a safe and predictable passage maker. This very well maintained Jeanneau 36.2 is now ready to go and needs no work whatsoever with her new engine and new sails.

*Johan Nooitgedagt*

## SPECIFICATIONS

<b>Dimensions</b>	10.80 x 3.75 x 1.90 (m)	<b>Builder</b>	Jeanneau
<b>Built</b>	1997	<b>Cabins</b>	2
<b>Material</b>	GRP	<b>Berths</b>	5
<b>Engine(s)</b>	1 x Volvo Penta D2-40 diesel	<b>Hp/Kw</b>	39.60 (hp), 29.11 (kw)
<b>Asking price</b>	sold (VAT )	<b>Lying</b>	at sales office

## CONTACT

<b>Sales office</b>	De Valk Hindeloopen B.V.	<b>Telephone</b>	+31 514 52 40 00
<b>Address</b>	Oosterstrand 1 8713 JS Hindeloopen NL	<b>E-mail</b>	hindeloopen@devalk.nl

## DISCLAIMER

These particulars are given in good faith as supplied but cannot be guaranteed.



# JEANNEAU 36.2

## GENERAL

<b>Model</b>	JEANNEAU 36.2
<b>Type</b>	sailing yacht
<b>LOA (m)</b>	10,80
<b>LWL (m)</b>	9,30
<b>Beam (m)</b>	3,75
<b>Draft (m)</b>	1,90
<b>Air draft (m)</b>	19,00
<b>Headroom (m)</b>	1,90
<b>Year built</b>	1997
<b>Launched</b>	yes
<b>Builder</b>	Jeanneau
<b>Country</b>	France
<b>Designer</b>	Jaques Faroux
<b>Displacement (t)</b>	5,6
<b>Ballast (tonnes)</b>	cast iron 1,6
<b>CE norm</b>	A
<b>Hull material</b>	GRP
<b>Hull colour</b>	white
<b>Hull shape</b>	round-bilged
<b>Keel type</b>	bulb keel
<b>Superstructure material</b>	GRP
<b>Rubbing strake</b>	stainless steel
<b>Deck material</b>	GRP
<b>Deck finish</b>	non-skid moulded in
<b>Superstructure deck finish</b>	non-skid moulded in
<b>Cockpit deck finish</b>	teak
<b>Antifouling (year)</b>	2018 International
<b>Dorades</b>	yes
<b>Window frame</b>	aluminium
<b>Window material</b>	perspex



Deckhatch	Goiot
Portholes	aluminium
Fuel tank 2 (litre)	150
Level indicator (fuel tank)	yes
Freshwater tank (litre)	350
Wheel steering	cable steering
Emergency tiller	yes

## ACCOMMODATION

Cabins	2
Berths	5
Interior	mahogany
Layout	yes
Floor	teak and holly
Open cockpit	yes
Headroom saloon (m)	1,90
Heating	diesel ducted hot air
Galley	yes
Countertop	corian
Sink	stainless steel
Cooker	Eno 2 burner
Oven	yes
Fridge	115 liter
Hot water system	220V + engine
Water pressure system	electrical Pump 2018
Kettle	yes
Crockery	yes
Owners cabin	double bed Rear
Bed length (m)	210
Wardrobe	shelves
Bathroom	separate



Toilet	separate
Toilet system	manual Jabsco
Wash basin	in the bathroom
Shower	separate
Guest cabin 1	v-bed
Bed length (m)	1,95
Wardrobe	hanging and shelves
Bathroom	separate
Toilet	separate
Toilet system	manual
Wash basin	in the cabin
Shower	separate

## MACHINERY

No of engines	1
Make	Volvo Penta
Type	D2-40
HP	39,60
kW	29,11
Fuel	diesel
Year installed	2006
Maximum speed (kn)	7
Cruising speed (kn)	6
Consumption (l/hr)	3
Engine cooling system	freshwater heat exchanger
Drive	shaft
Engine controls	bowden cable
Gearbox	mechanical
Exhaust	watercooled
Propeller type	fixed
Propeller blades	3



<b>Propeller shaft material</b>	stainless steel
<b>Shaft lubrication</b>	water
<b>Manual bilge pump</b>	yes
<b>Electric bilge pump</b>	yes
<b>Electrical installation</b>	12 volt
<b>Start battery</b>	1x 70 Ah 2018
<b>Service battery</b>	2x 105 Ah 2018
<b>Battery charger</b>	Tecpro 25 amp
<b>Inverter</b>	Kotronic 1,5kw
<b>Shorepower</b>	with cable

## NAVIGATION

<b>Compass on flybridge</b>	Plastimo
<b>Depth sounder</b>	Autohelm Depth
<b>Depth sounder/log</b>	Autohelm Depth
<b>Log</b>	Autohelm Speed
<b>Windset</b>	Autohelm Wind
<b>VHF</b>	Navman VHF 7100
<b>Autopilot</b>	Autohelm ST6000+
<b>Rudder angle indicator</b>	Autohelm ST6000+
<b>Radar</b>	Furuno 15" dome
<b>GPS</b>	Furuno GPS/WAAS Navigator GP32
<b>Plotter/GPS</b>	Raymarine A 50
<b>Radar/GPS</b>	Furuno Marine radar 1623
<b>Navtex</b>	Furuno Navtex NX-300

## EQUIPMENT

<b>Sprayhood</b>	De Vries
<b>Cockpit cushions</b>	yes
<b>Boarding ladder</b>	stainless steel
<b>Deck shower</b>	yes



<b>Anchor</b>	
<b>Anchor chain</b>	yes
<b>Windlass</b>	manual
<b>Outboard support</b>	yes
<b>Sea railing</b>	wire
<b>Grab rail (superstructure)</b>	teak
<b>Pushpit</b>	yes
<b>Pulpit</b>	yes
<b>Fenders</b>	yes
<b>Mooring lines</b>	yes
<b>Radio-cd player</b>	Pioneer
<b>Speakers in salon</b>	yes
<b>Speakers in cabin</b>	yes
<b>Clock - barometer</b>	yes
<b>Fire extinguisher</b>	yes

## RIGGING

<b>Rigging</b>	sloop
<b>Standing rigging</b>	wire
<b>Brand mast</b>	Z-Spar
<b>Material mast</b>	aluminium
<b>Spreaders</b>	2 pair rear swept
<b>Mainsail</b>	2017 Supersailstore 26,8m2
<b>Mainsail cover</b>	De Vries
<b>Fully battened mainsail</b>	yes
<b>Genoa I</b>	2007 Supersailstore 34,6m2
<b>Gennaker</b>	50m2 With snuffler
<b>Reefing System</b>	quick-one-line-reefing
<b>Backstay adjuster</b>	mechanical
<b>Boomvang</b>	tackle
<b>Genoa sheetwinches</b>	2x Harken ST44 2 speed



**Halyard winches**

2x Harken ST40 2 speed

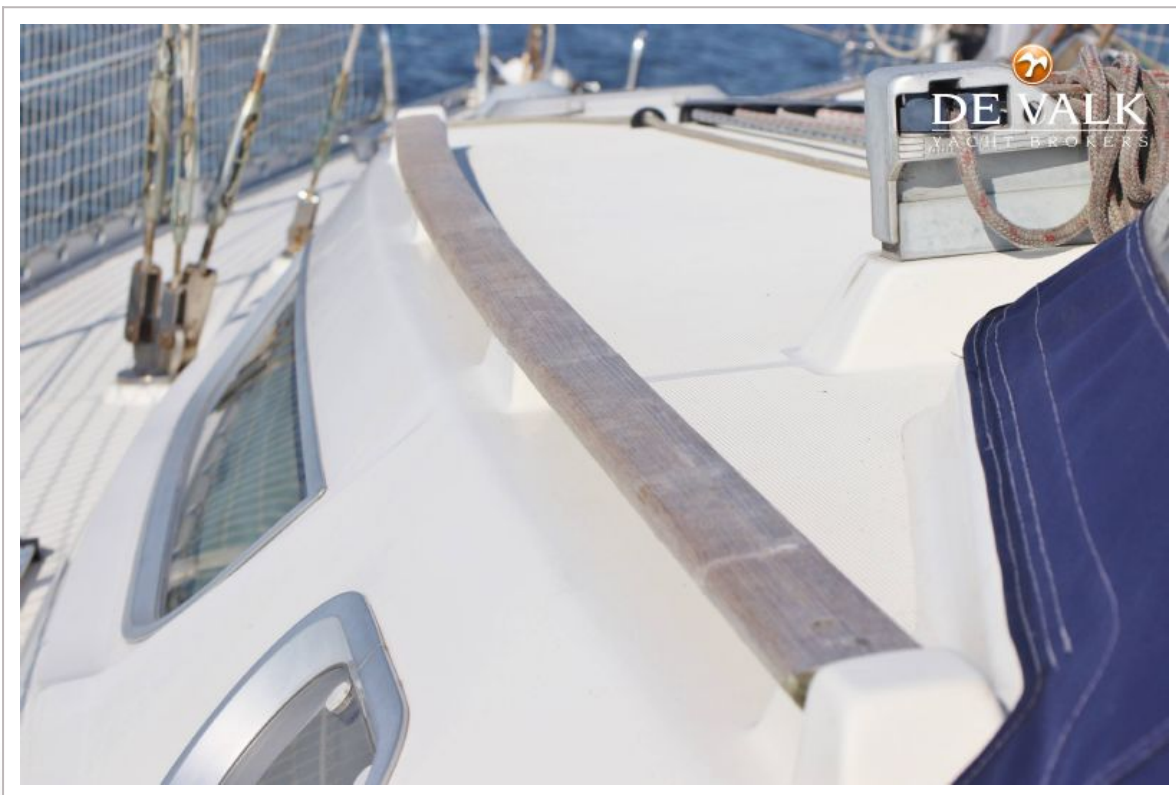




# JEANNEAU 36.2



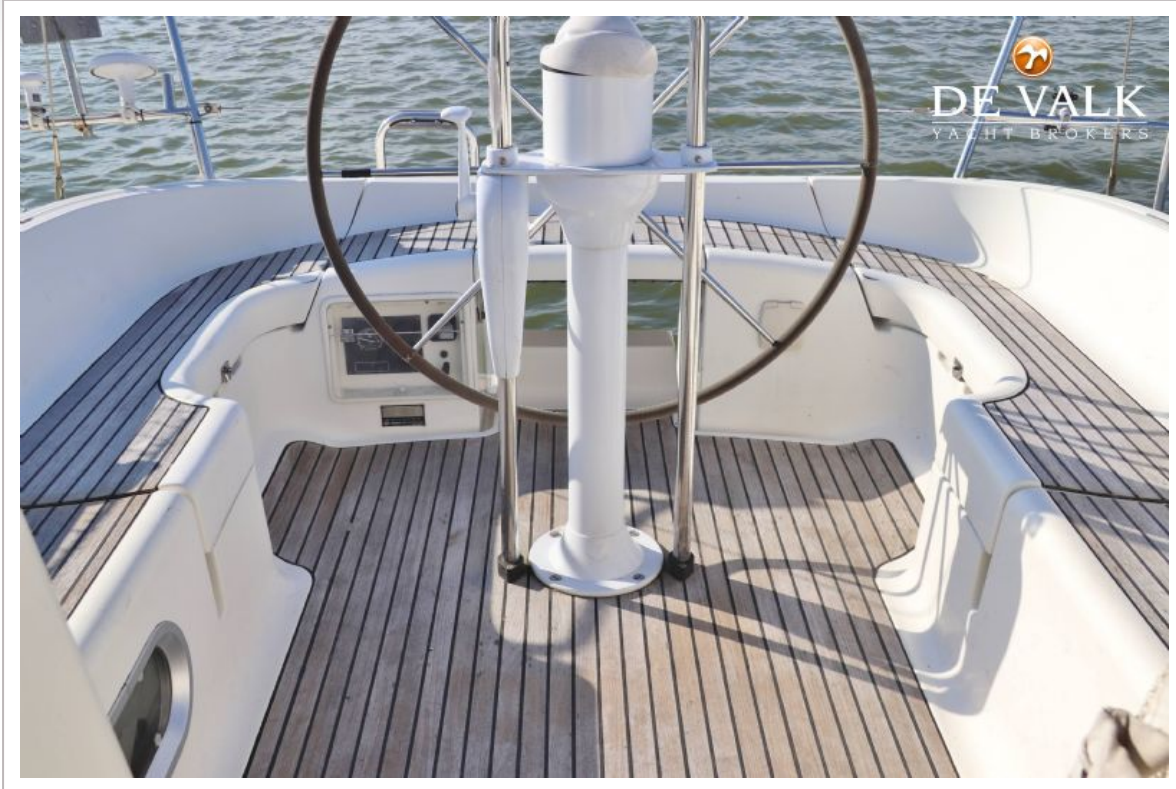
# JEANNEAU 36.2



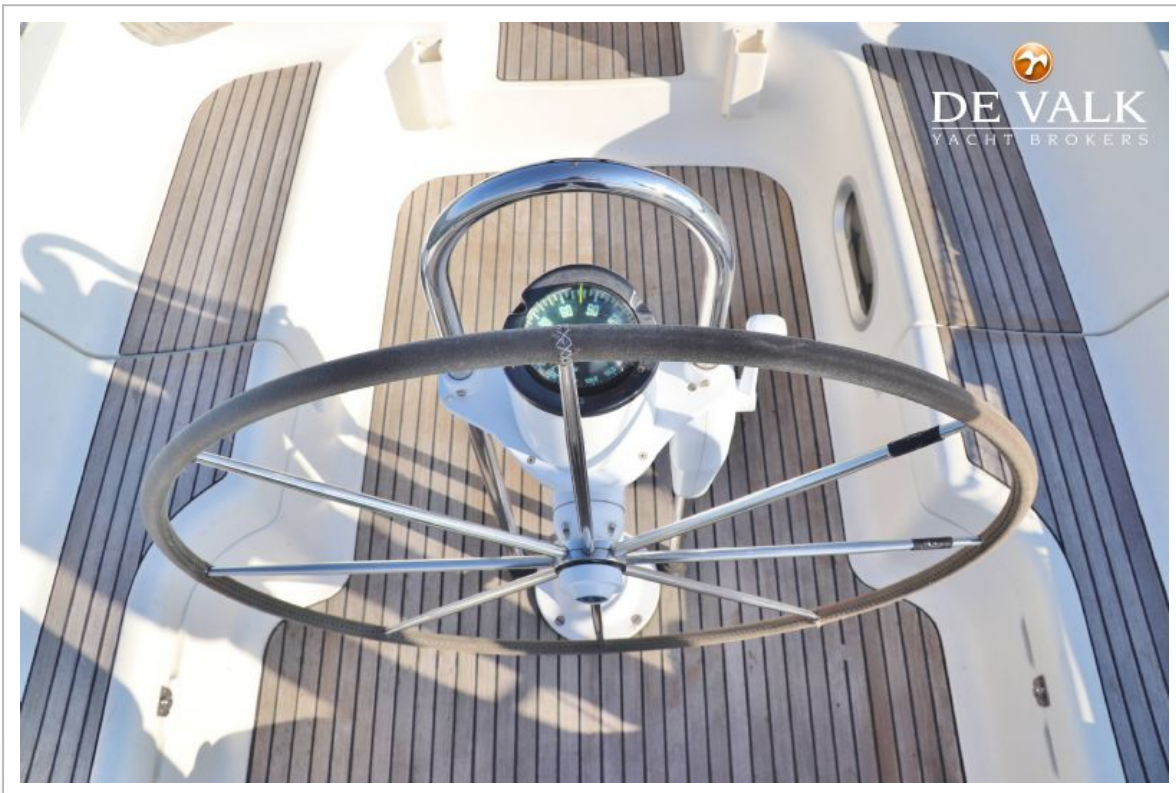
# JEANNEAU 36.2



# JEANNEAU 36.2



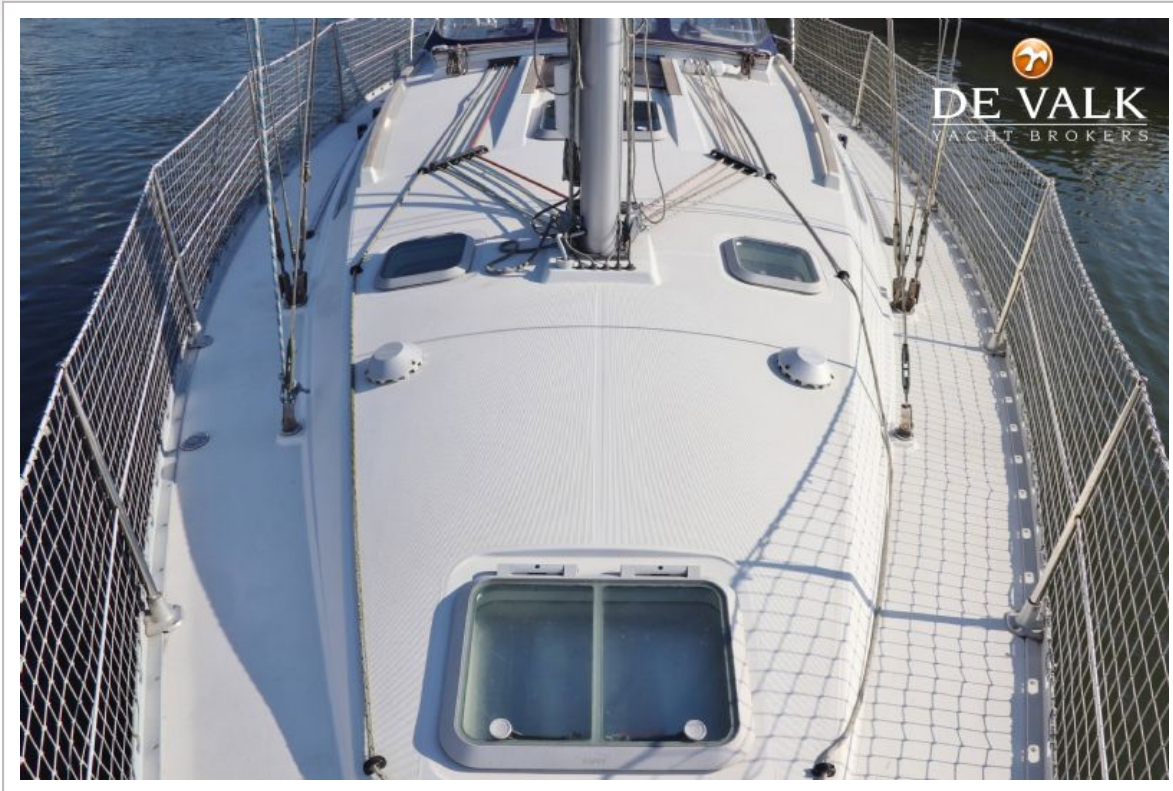
# JEANNEAU 36.2



# JEANNEAU 36.2



# JEANNEAU 36.2



# JEANNEAU 36.2





# JEANNEAU 36.2



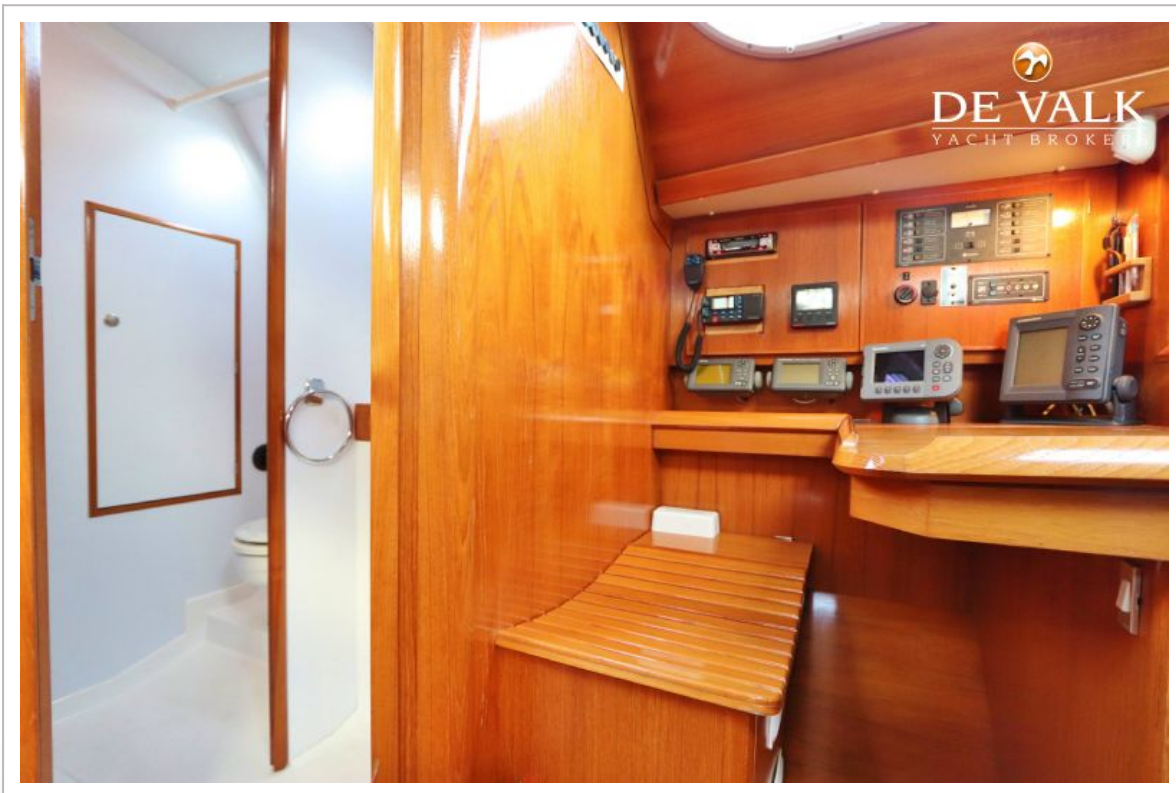
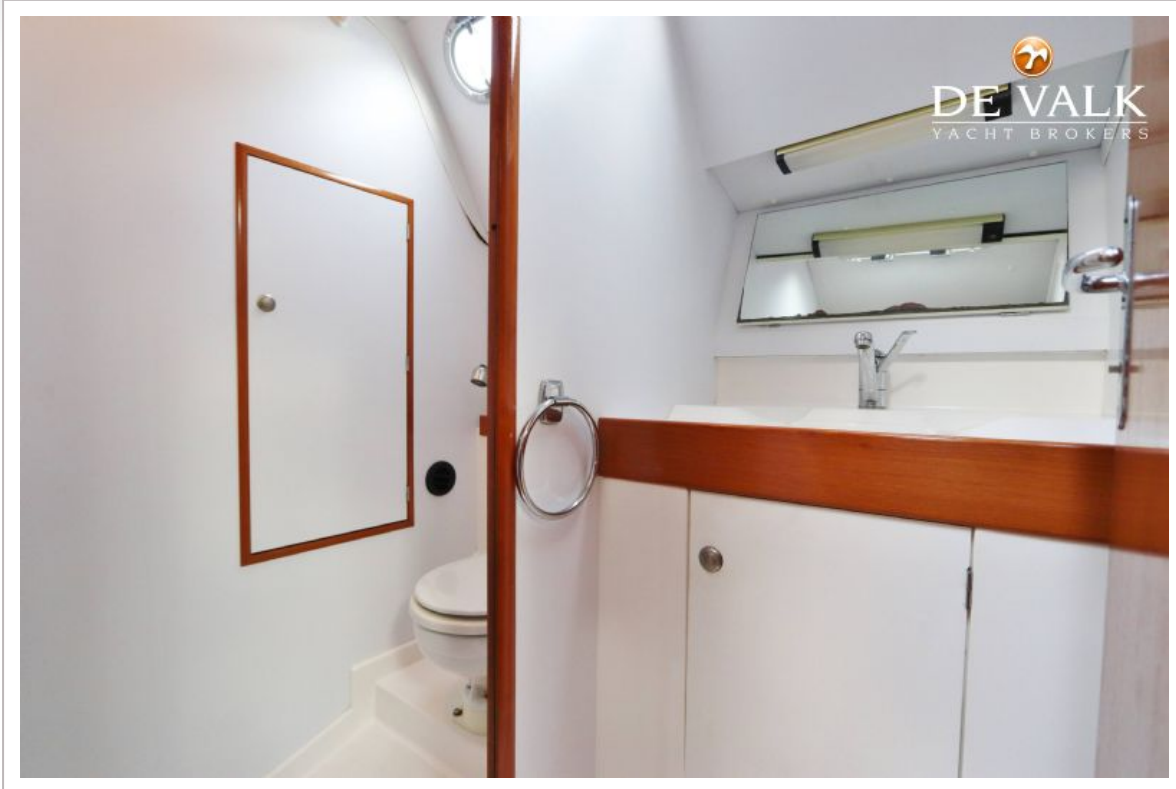
# JEANNEAU 36.2



# JEANNEAU 36.2



# JEANNEAU 36.2



# JEANNEAU 36.2



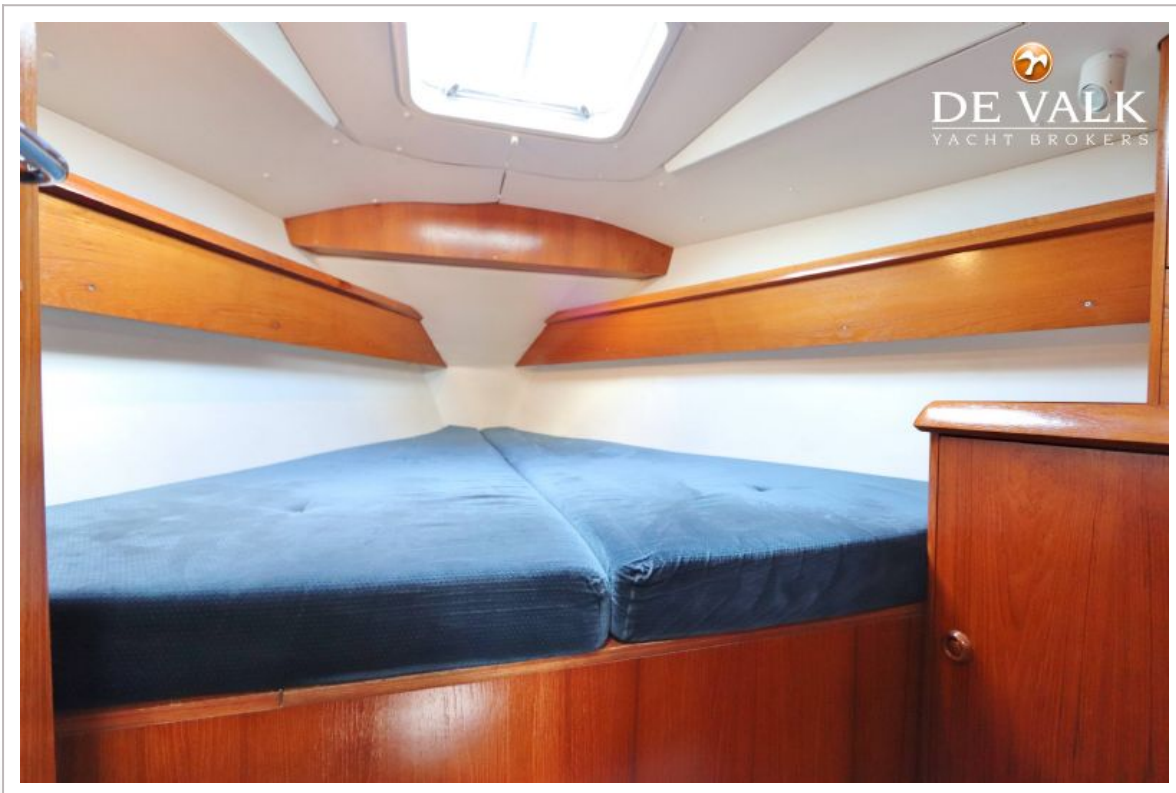
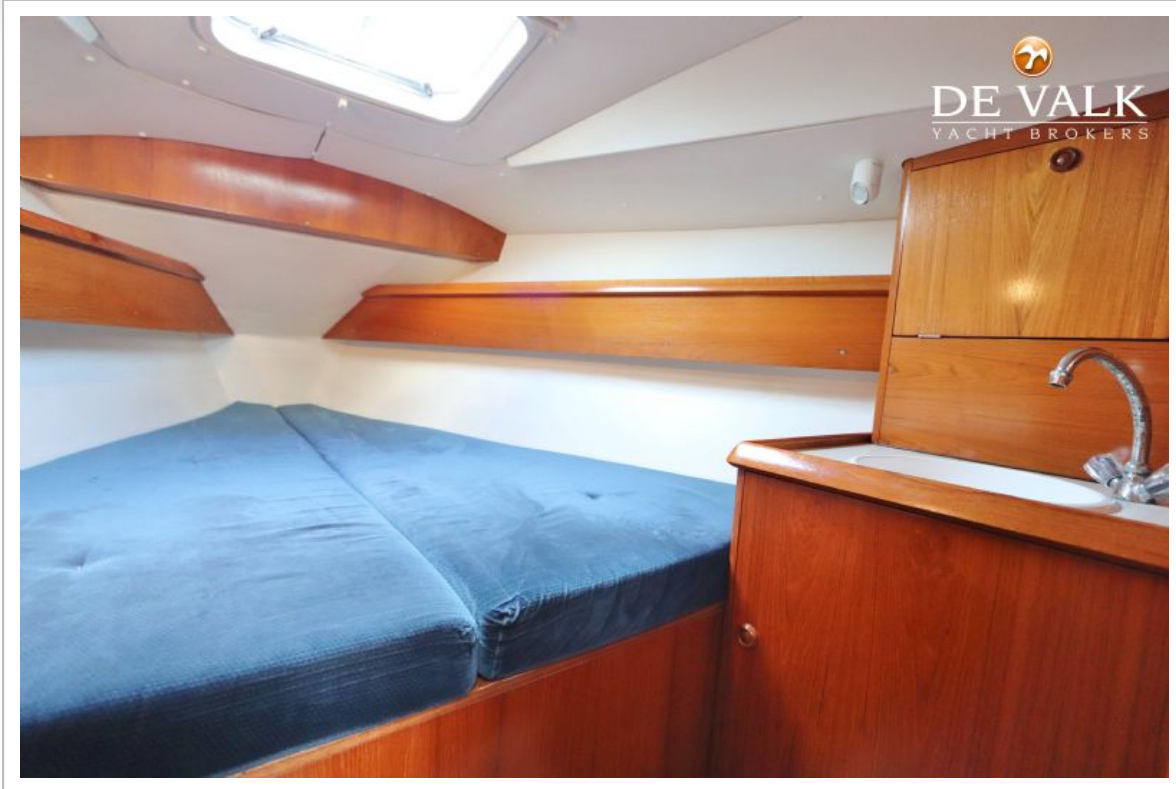
# JEANNEAU 36.2



# JEANNEAU 36.2



# JEANNEAU 36.2

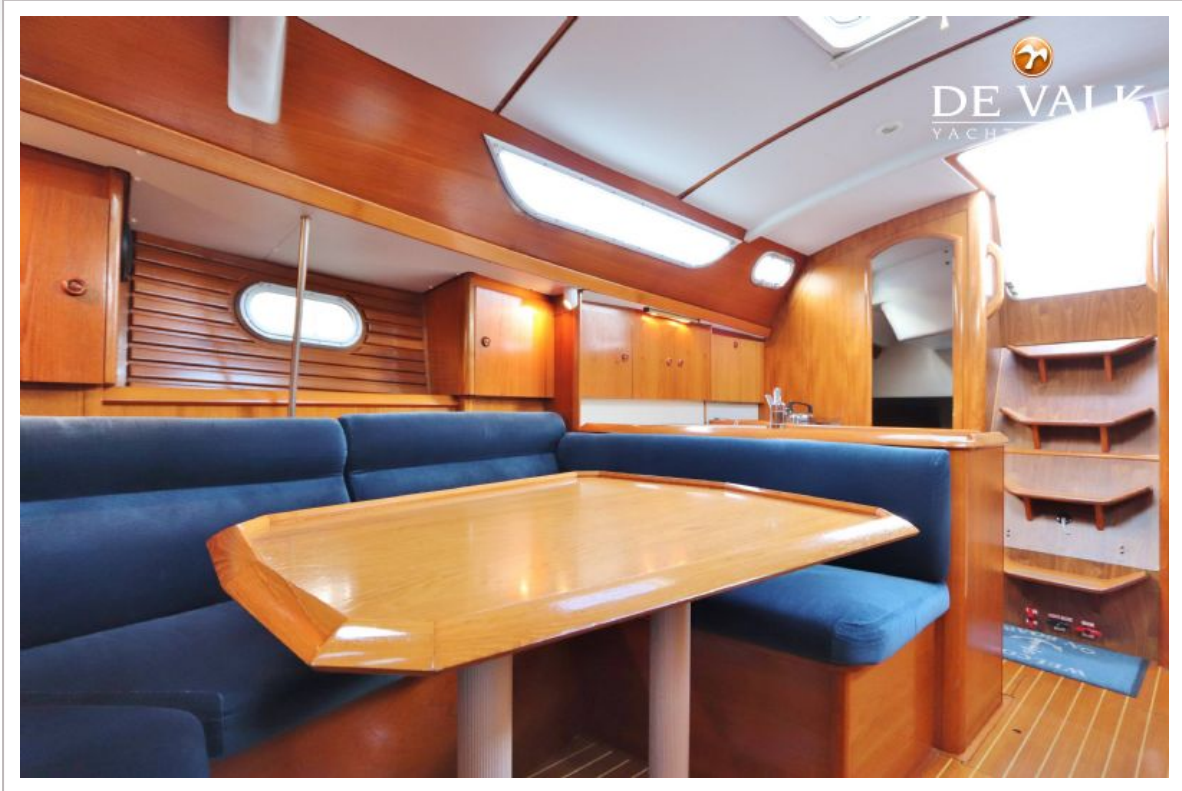




# JEANNEAU 36.2



# JEANNEAU 36.2



# JEANNEAU 36.2

