



HUTTING 45



DE VALK
YACHT BROKERS

HUTTING 45

BROKER'S COMMENTS

This custom Koopmans breathes pure elegance and appreciated Dutch craftsmanship. Where other yachts claim to be the best, Hutting yachts are the best! She has been maintained to first class condition with various upgrades and refits. This Hutting 45 is ideal for safe short handed offshore sailing, coastal hops, etc. Uncompromising woodwork in teak and nutwood paneling assures a classic yet light interior. Still with her first owner, shows how much these yachts are appreciated for their timeless design, construction and sea keeping capabilities.

Marc Weijenberg

SPECIFICATIONS

Dimensions	13.70 x 4.05 x 1.90 (m)	Builder	Hutting Yachts Makkum BV
Built	1992	Cabins	2
Material	Aluminium	Berths	5
Engine(s)	1 x Perkins M-90 diesel	Hp/Kw	80.00 (hp), 58.80 (kw)
Asking price	sold (VAT)	Lying	elsewhere / Not at sales office

CONTACT

Sales office	De Valk Sint Annaland B.V.	Telephone	+31 (0)166 601 000
Address	Koelhuisweg 4 4697 RM Sint Annaland NL	E-mail	sintannaland@devalk.nl

DISCLAIMER

These particulars are given in good faith as supplied but cannot be guaranteed.



GENERAL

Model	HUTTING 45
Type	sailing yacht
LOA (m)	13,70
LWL (m)	11,10
Beam (m)	4,05
Draft (m)	1,90
Air draft (m)	21,80
Headroom (m)	1,96
Year built	1992
Launched	1993
Builder	Hutting Yachts Makkum BV
Country	The Netherlands
Designer	Dick Koopmans Jr.
Displacement (t)	15
Ballast (tonnes)	lead in aluminum 5,2
Hull material	aluminium
Hull colour	blue
Hull thickness (mm)	7 - 6 - 5 mm (ALMg 4.5Mn)
Hull shape	round-bilged
Keel type	fin keel with bulb
Superstructure material	composite
Rubbing strake	wood
Deck material	aluminium
Deck finish	teak (partially new 2007)
Cockpit deck finish	teak
Antifouling (year)	(2016)
Dorades	stainless steel 2 x
Window frame	aluminium Gebo
Window material	Acrylate
Deckhatch	Goiot



Portholes	aluminium
Insulation	foam plates Alveolux 30mm
Fuel tank (litre)	aluminium 2 x 320
Level indicator (fuel tank)	Tanktender
Fuel daytank (litre)	aluminium 40 + auto-pump
Freshwater tank (litre)	aluminium 2 x 300
Level indicator (freshwater)	Tanktender
Blackwater tank (litre)	aluminium 1 x 80
Blackwater tank extraction	deck extraction + pump
Wheel steering	mechanical Whitlock Cobra MkIII
Emergency tiller	yes
More info on paintwork	Professionally painted 2-comp; hull 2016, cockpit and superstructure 2014/15
Extra info	Gauzes and blinds for deckhatches & portholes
Extra info	Excellent performer under sail and engine. Delos has proven herself on various occasions to be fast, reliable and very forgiving in all conditions. With the bulb keel she is stable and tacks well. A viewing is highly recommended.

ACCOMMODATION

Cabins	2
Berths	5
Interior	nut Teak +
Floor	teak and holly
Saloon	with U-shaped settee
Headroom saloon (m)	1,96
Air-conditioning	reverse cycle airco Frigoboat heat/cold
Navigation center	yes
Chart table	yes
Dinette	yes
Galley	U-shape
Countertop	corian



Sink	stainless steel 2 x
Cooker	calor gas Taylor 3 burner
Oven	Taylor
Gas alarm	DSI
Microwave	Moulinex (220v)
Fridge	Frigoboat Icemaster 24v
Hot water system	220V + engine 55 ltr (2010)
Water pressure system	electrical
Manual and/or foot pump	yes
Coffee maker	yes
Crockery	yes
Owners cabin	double bed + single bed Forward / voor / vorne
Bed length (m)	+ single 2,00 x 0,70 2,00 x 1,30
Wardrobe	hanging/drawers/shelves
Bathroom	en suite I
Wash basin	in the bathroom
Shower	en suite
Guest cabin 1	double bed Aft/achter/hinten
Bed length (m)	2,00 x 1,40
Wardrobe	hanging and shelves
Bathroom	II
Toilet	shared
Toilet system	electric
Wash basin	in the bathroom
Shower	shared
Extra info	Ducts for hot air heating installed. Airco 2 x 8000BTU

MACHINERY

No of engines	1
Make	Perkins
Type	M-90



HP	80,00
kW	58,80
Fuel	diesel
Year installed	1992
Maximum speed (kn)	8
Cruising speed (kn)	7
Consumption (l/hr)	4
Engine hours	1425
Engine cooling system	freshwater heat exchanger
Drive	shaft
Engine controls	bowden cable
Gearbox	hydraulic Hurth (2006)
Bowthruster	electric 125kgf
Exhaust	watercooled
Propeller type	feathering Maxprop (2006)
Propeller blades	3
Propeller shaft material	stainless steel 40 mm
Shaft lubrication	water
Manual bilge pump	+1 not fitted 1 x
Electric bilge pump	4 x
Electrical installation	12-24-220v
Generator	wet exhaust Fisher Panda 6kW (2000)
Running hours generator	663
Batteries	1 x Victron (12v)
Start battery	1 x Victron (2013)
Service battery	(can be extended) 2 x Victron (2013)
Generator battery	1 x Victron
Bowthruster battery	2 x Optima (2015)
Battery charger/inverter	Mastervolt Mass Combi 24v/2500watt/60amp (2013)
Diode battery combiners	yes
Shorepower	with cable
Insulation transformer	Mastervolt Gi3,5 (2011)



Watermaker	not in use (needs service) HRO 9/500 (1993)
Extra info	2016; new enginemounts, stuffingbox and cutless bearing
Extra info	2013; overhaul of the electrical installation incl. Mastervolt Masterbus system with Masterview Easy panels and LCD read-out screen. 2013; new twin alternators
Extra info	engine room blower

NAVIGATION

Compass	C.Plath Venus
Electric compass	via autopilot Raymarine ST60 (2013)
Depth sounder	Raymarine ST60 (2013)
Log	Raymarine ST60 (2013)
Windset	+ close hauled Raymarine ST60 (2013)
Repeater	at chart table 2 x Autohelm ST50
VHF	Garmin 10i + DSC (2014)
Autopilot	Autohelm drive (1992) Raymarine ACU400 / P70 controller + heading sensor (2013)
Rudder angle indicator	via autopilot
GPS	Raymarine 125 (2013)
Plotter	yes
Radar/plotter	+ Raymarine RL70C repeater Raymarine RL-80CRC (2001)
Weather receiver	Furuno
Navtex	yes
PC connection	yes
Electronis chart(s)	yes
AIS transponder	Garmin AIS 600 (2011)
EPIRB	McMurdo E3 (1999)
Extra info	Renaud active antenna system

EQUIPMENT

Sprayhood with grab rail	(2012)
---------------------------------	--------



Cockpit cover	(2012)
Winter cover	yes
Cockpit table	yes
Bathing platform	fold-out
Boarding ladder	stainless steel + teak steps
Gangway	yes
Deck shower	yes
Anchor	Bruce 30 kg stainless steel
Anchor chain	50mtr (stainless)
Windlass	electrical Maxwell 3500
Capstan	Maxwell
Deck wash	yes
Outboard support	Teak
Davits	stainless steel 1 x outboard/MOB
Sea railing	stainless steel
Grab rail (superstructure)	teak
Railing side opening gates	2 x
Pushpit	yes
Pulpit	yes
Life raft	container Plastimo (2005)
Life raft (pers)	6
Last life raft survey	2005
Lifejackets	2 + 2 x automatic
Lifebuoy	yes
Radar reflector	Tri-Lens
Fenders	7 x
Mooring lines	yes
TV	Samsung
Satellite	phone for pre-paid card Thrane&Thrane Inmarsat
Radio-cd player	Clarion
DVD player	JVC
Cockpit speakers	yes



Speakers in salon	yes
Clock - barometer	yes
Extra info	deck-cockpit lighting on antenna mast 3 color masthead light

RIGGING

Rigging	sloop
Standing rigging	Dyform
Brand mast	Proctor
Material mast	aluminium coated
Spreaders	2 set + diamond spreader
Fully battened mainsail	De Boer Sails (2008) Furling 48m2
Stoway mast	yes
Genoa	De Boer Sails (2008) 50m2
Genoa furler	Reckmann R3
Cutter furler	mounting prepared
Spinnaker	practically not used (Hood 1994) 182m2 Tri-star
Booster	practically not used (Hood 1994)
Yankee	De Boer Sails (2008) 40m2
Reefing System	main in-mast furling
Backstay adjuster	hydraulic Navtec 22
Boomvang	mechanical Proctor
Primary sheet winch	2 x Lewmar 56ST
Secondary sheet winch	electric 2 x Lewmar 46ST
Genoa sheetwinches	2 x Lewmar 52ST
Halyard winches	2 x Lewmar 43ST
Spi-pole	aluminium
Isolated backstay	yes
Extra info	Cockpit lighting in boom Alum turnbuckle covers Mast painted in 2001



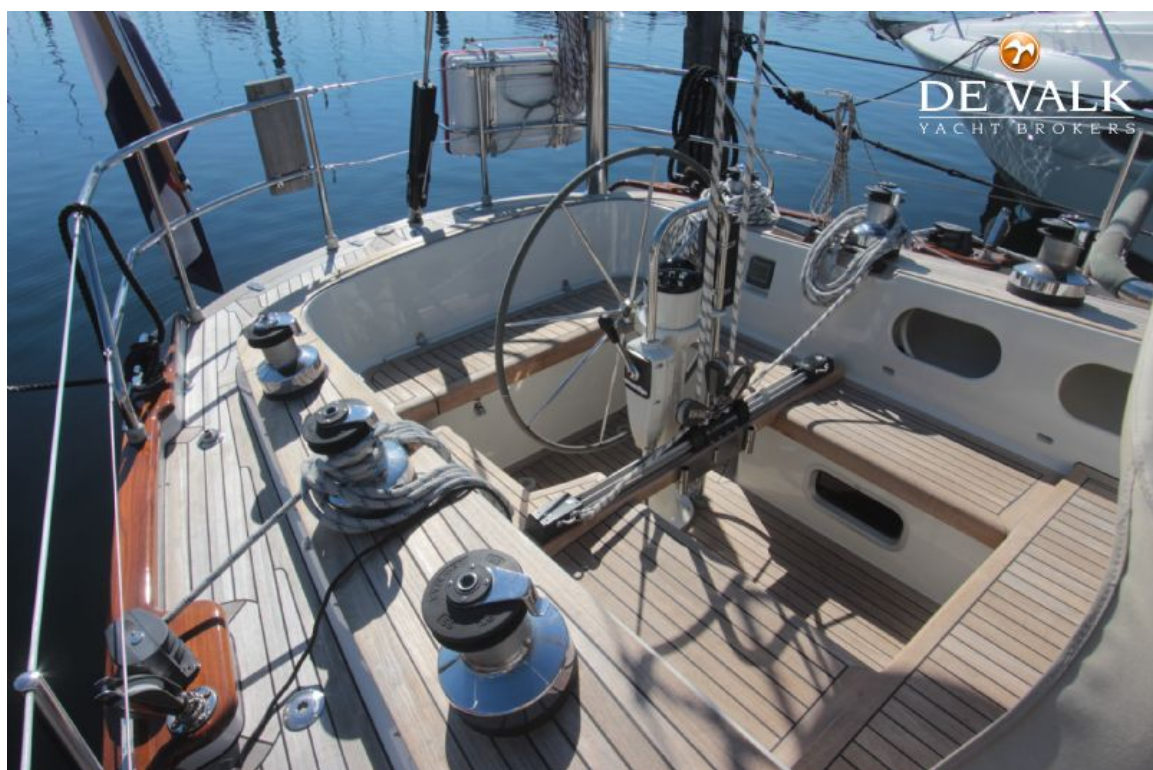
HUTTING 45



HUTTING 45



HUTTING 45



HUTTING 45



HUTTING 45



HUTTING 45

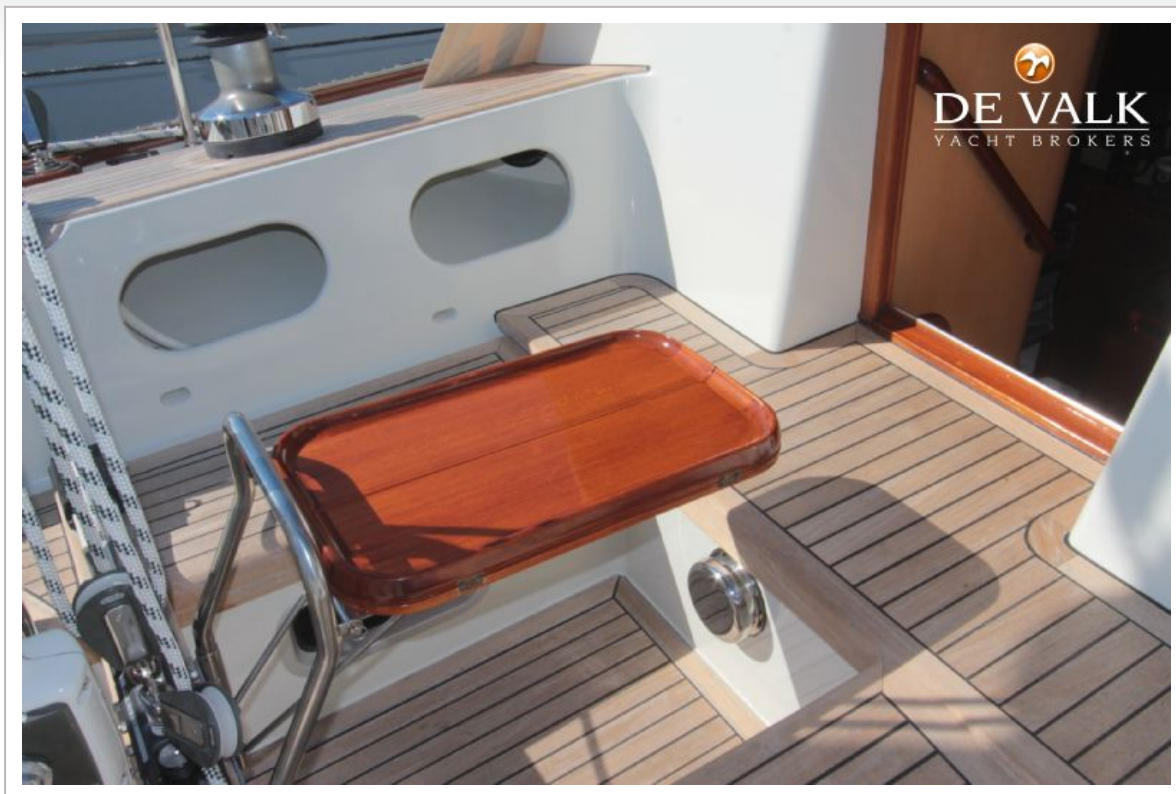


HUTTING 45



HUTTING 45





HUTTING 45



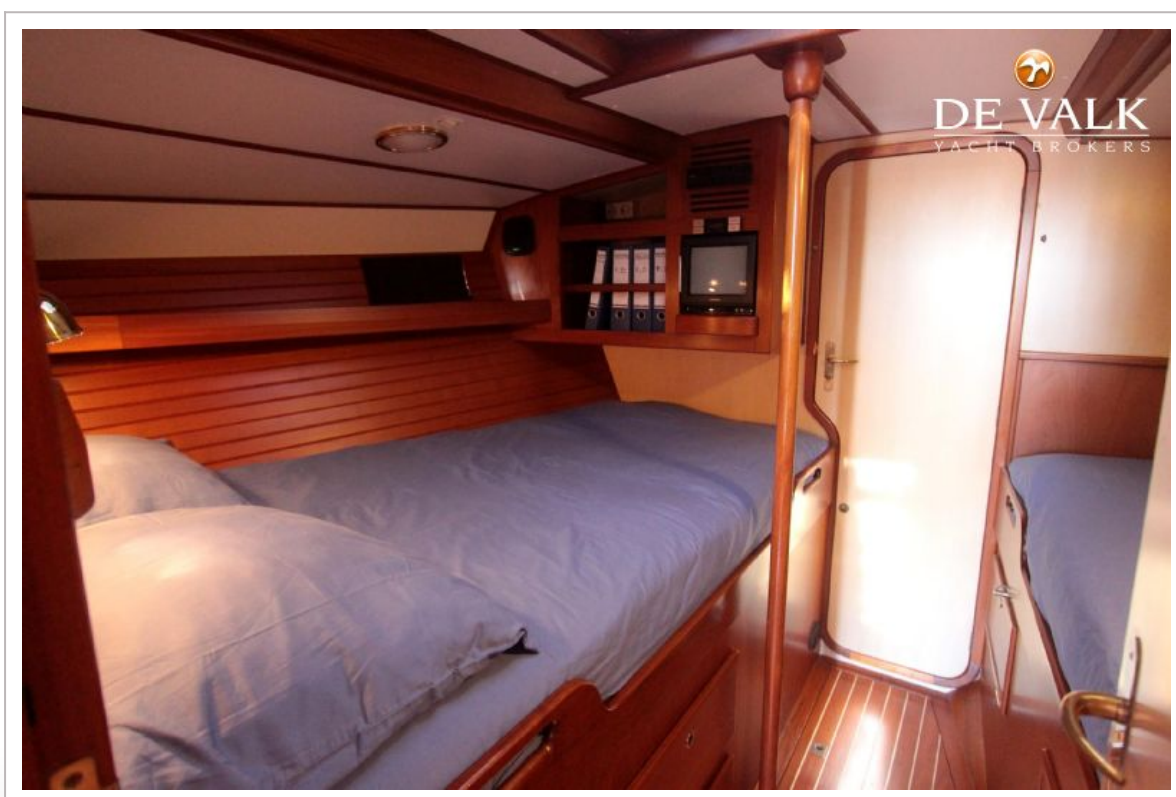
HUTTING 45



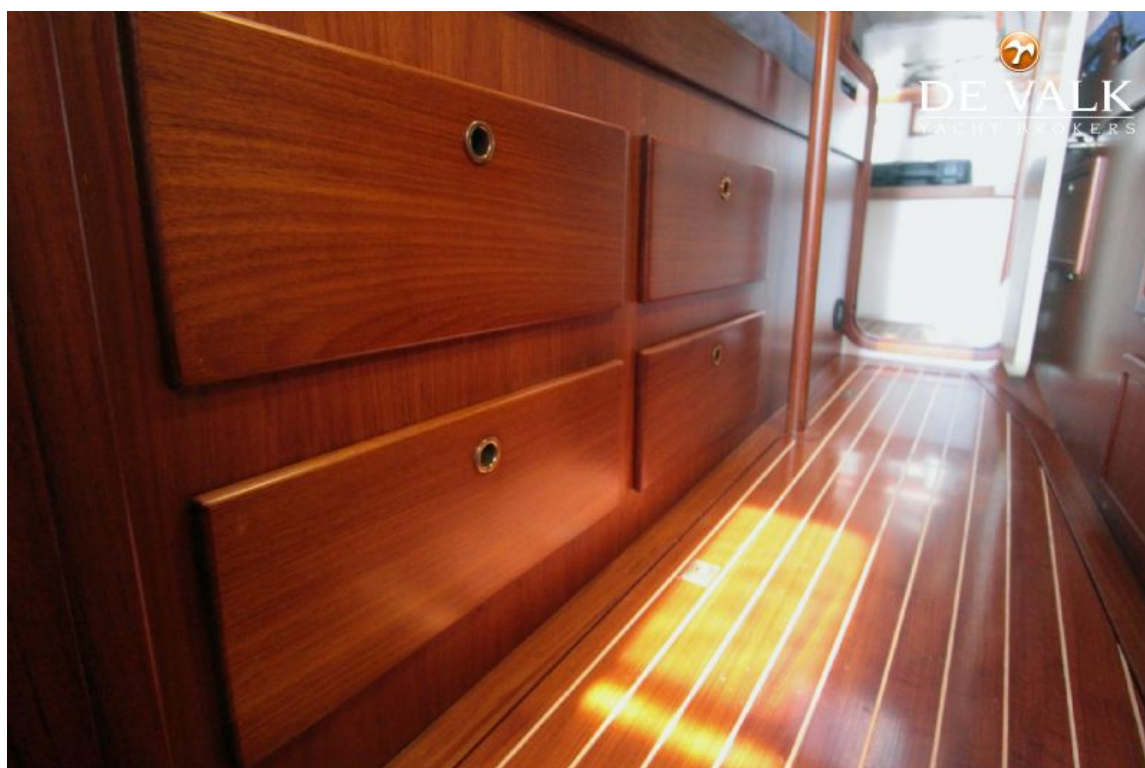
HUTTING 45



HUTTING 45



HUTTING 45



HUTTING 45



HUTTING 45



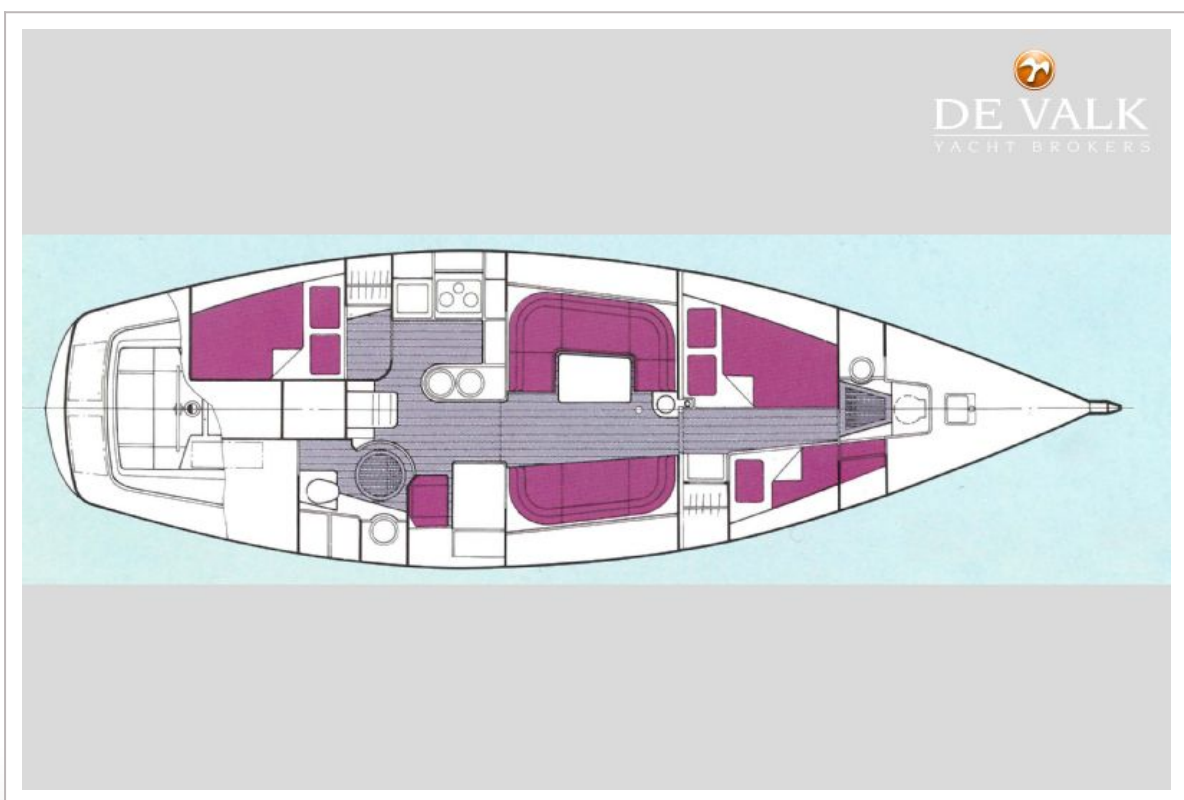
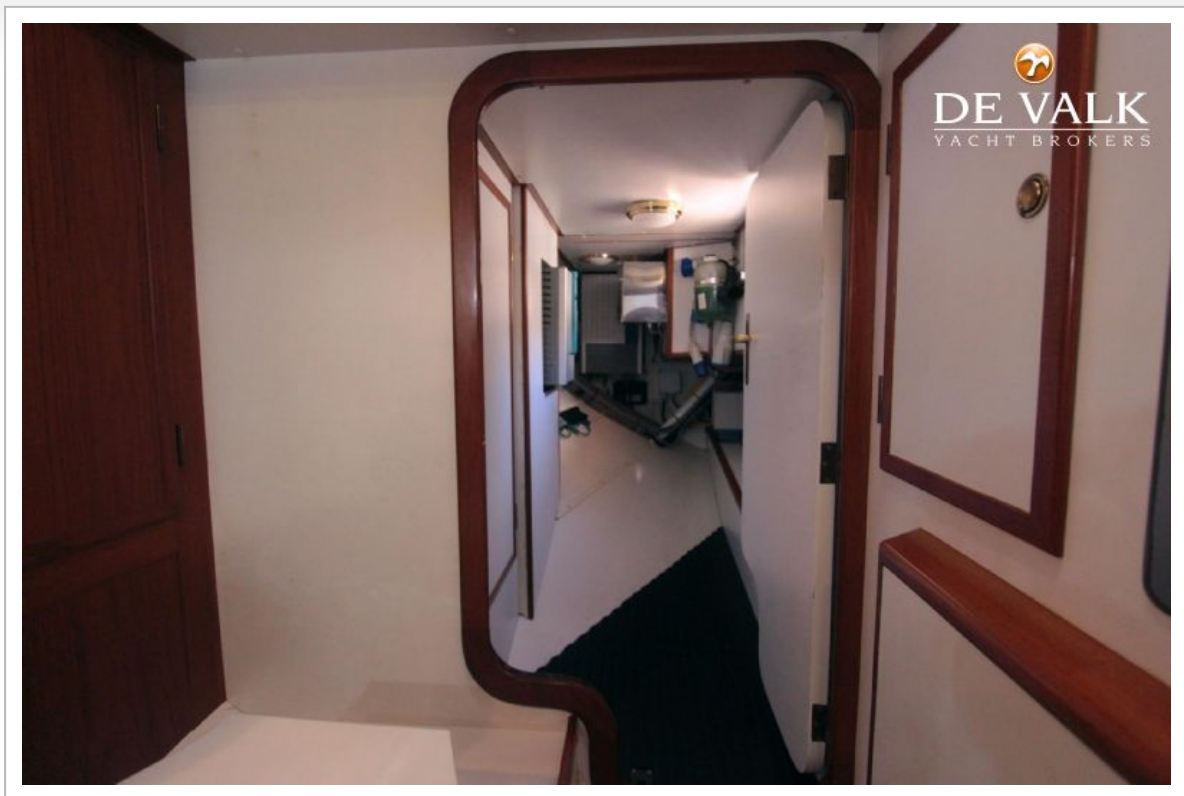
HUTTING 45



HUTTING 45



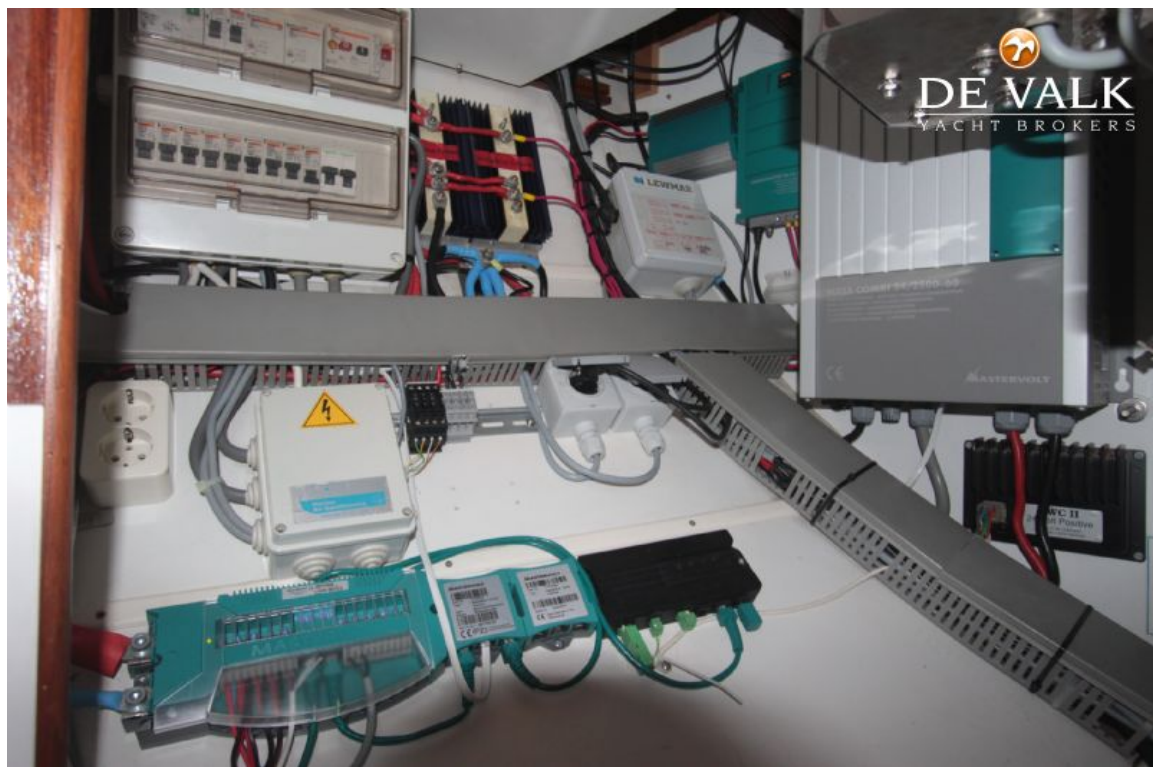
HUTTING 45



HUTTING 45



HUTTING 45



HUTTING 45

