



DE VALK
YACHT BROKERS



NAJAD 420



DE VALK
YACHT BROKERS

BROKER'S COMMENTS

When Quality, Space and Comfort are your demands, look no further, this Najad 420 is the answer to it all. When dreams turn in to ships, this well maintained yacht reaches high standards in its sailing qualities and its living accommodation. These details, from the shape of the hull to the design, create a yacht that is elsewhere unmatched for serious sailing as well as for gentle cruising. Now to be admired and inspected in Hindeloopen 7 days a week.

Tjerk Bouma

SPECIFICATIONS

Dimensions	13.00 x 3.82 x 1.90 (m)	Builder	Najad Varvet AB
Built	1991	Cabins	2
Material	GRP	Berths	7
Engine(s)	1 x Volkswagen TDI 100-5 diesel	Hp/Kw	100.00 (hp), 73.00 (kw)
Asking price	sold (VAT)	Lying	contact Hindeloopen

CONTACT

Sales office	De Valk Hindeloopen B.V.	Telephone	+31 514 52 40 00
Address	Oosterstrand 1 8713 JS Hindeloopen NL	E-mail	hindeloopen@devalk.nl

DISCLAIMER

These particulars are given in good faith as supplied but cannot be guaranteed.



GENERAL

Model	NAJAD 420
Type	sailing yacht
LOA (m)	13,00
LWL (m)	10,45
Beam (m)	3,82
Draft (m)	1,90
Air draft (m)	21,00
Headroom (m)	2,10
Year built	1991
Launched	1993
Builder	Najad Varvet AB
Country	Sweden
Designer	Georg Nissen
Displacement (t)	13
Ballast (tonnes)	lead 4,8
CE norm	A
Hull material	GRP
Hull colour	white
Hull shape	S-bilged
Keel type	fin keel
Superstructure material	GRP
Rubbing strake	stainless steel
Deck material	GRP
Deck finish	teak 2011
Cockpit deck finish	teak 2011
Antifouling (year)	2018
Dorades	yes
Window frame	aluminium
Window material	tempered glass
Deckhatch	yes



Portholes	aluminium
Fuel tank (litre)	stainless steel 300
Level indicator (fuel tank)	yes
Freshwater tank (litre)	stainless steel 500 + filter system
Level indicator (freshwater)	yes
Blackwater tank (litre)	stainless steel 2 x 70
Blackwater tank extraction	pump
Wheel steering	cable steering
Emergency tiller	yes

ACCOMMODATION

Cabins	2
Berths	7
Interior	mahogany
Layout	yes
Floor	teak and holly
Saloon	with L-shape dinette
Headroom saloon (m)	2,10
Heating	diesel ducted hot air Webasto
Chart table	yes
Aft Cabin	yes
Dinette to convert into berth	with lee-cloths
Galley	yes
Countertop	plastic
Sink	stainless steel
Cooker	calor gas 2 Burner 2018
Oven	2018
Fridge	2017 Webasto Sp Compact
Hot water system	220V + engine Volvo
Water pressure system	electrical
Crockery	yes



Owners cabin	double bed 2017 Mattresses
Wardrobe	hanging/drawers/shelves
Bathroom	en suite I
Toilet	en suite
Toilet system	manual
Wash basin	in the bathroom
Shower	en suite
Extra info	extra fill-in piece
Guest cabin 1	double bed + single bed Front
Bed length (m)	2,00
Wardrobe	shelves
Bathroom	en suite
Toilet	en suite
Toilet system	manual
Wash basin	in the bathroom
Shower	en suite
Extra info	+ fold-away single bed
Extra info	Curtains (2017) LED interior lighting (2017) Truma safety gas-solenoid (2017) Cafrano 12v vents (2017) Upholstery (2017)

MACHINERY

No of engines	1
Make	Volkswagen
Type	TDI 100-5
HP	100,00
kW	73,00
Fuel	diesel
Year installed	2004
Maximum speed (kn)	8,00
Cruising speed (kn)	7,00
Consumption (l/hr)	5



Engine hours	3000
Engine cooling system	freshwater heat exchanger
Drive	shaft
Shaft seal	2018
Engine controls	bowden cable
Gearbox	mechanical HSW
Bowthruster	electrical Sleipner 6hp
Exhaust	watercooled
Propeller type	fixed
Propeller blades	4 x
Propeller shaft material	stainless steel
Shaft lubrication	water
Manual bilge pump	yes
Electric bilge pump	yes
Electrical installation	12/24/220v
Batteries	3x 80Ah 2017
Start battery	2x 50Ah 2018
Service battery	6x 90ah 2018
Battery monitor	Victron 12/24v (2016)
Battery charger	yes
Inverter	Victron Atlas (24v/1600watt)
Wind generator	yes
Solar panel	yes
Shorepower	with cable
Watermaker	Needs to be serviced
Extra info	extra 12v usb connectivity
Extra info	ask for the optional cruising inventory list

NAVIGATION

Compass	Silva
Electric compass	Raymarine fluxgate



Depth sounder	(2017) Raymarine i50/i60
Log	(2017) Raymarine i50/i60
Windset	(2017) Raymarine i50/i60
VHF	Sailor + Debeg 6322 DSC
Autopilot	(2011) + remote Raymarine 7002SPX30
Wind vane steering install.	2017 Hydrovane
Rudder angle indicator	via autopilot
Radar	(2010) Raymarine RD424HD
Plotter/GPS	2007 Raymarine E120
Personal computer	Fanless box-PC (2017)
Electronic chart(s)	software
AIS transponder	CTRX Class B (2008)
Navigation lights	LED (2017)
Extra info	Shipton earthingplate DNA Riskvision alarm system

EQUIPMENT

Fixed windscreen	yes
Sprayhood	2017
Cockpit cover	yes
Bimini	2017
Winter cover	yes
Cockpit cushions	2017
Cockpit table	yes
Bathing platform	yes
Boarding ladder	stainless steel
Bow ladder	yes
Deck shower	hot + cold
Anchor	CQR Plough
Anchor chain	65 mtr (10mm)
Windlass	electrical Vetus HP2410D
Capstan	yes



Sea railing	wire
Grab rail (superstructure)	teak
Railing side opening gates	yes
Pushpit	yes
Pulpit	yes
Lifebuoy	yes
Radar reflector	yes
Fenders	yes
Mooring lines	yes
Spare parts	yes
Radio-cd player	+ usb
Cockpit speakers	yes
Speakers in salon	yes
Clock - barometer	yes
Fire extinguisher	4x 2017

RIGGING

Rigging	cutter
Standing rigging	wire 2012 renewed
Brand mast	Sparcraft 2000
Material mast	aluminium
Spreaders	yes
Mainsail	furling 44m2 (2013)
Fully battened mainsail	Vertical
Stoway mast	yes
Genoa I	furling Pentex (2007)
Genoa II	on furler Vectra (2000)
Genoa furler	yes
Genoa cover	(2000 + 2017) 2 x Furlex
Gennaker	MPS 125m2 (2001)
Staysail	2017 Challenge high mass fiber premium 20m2



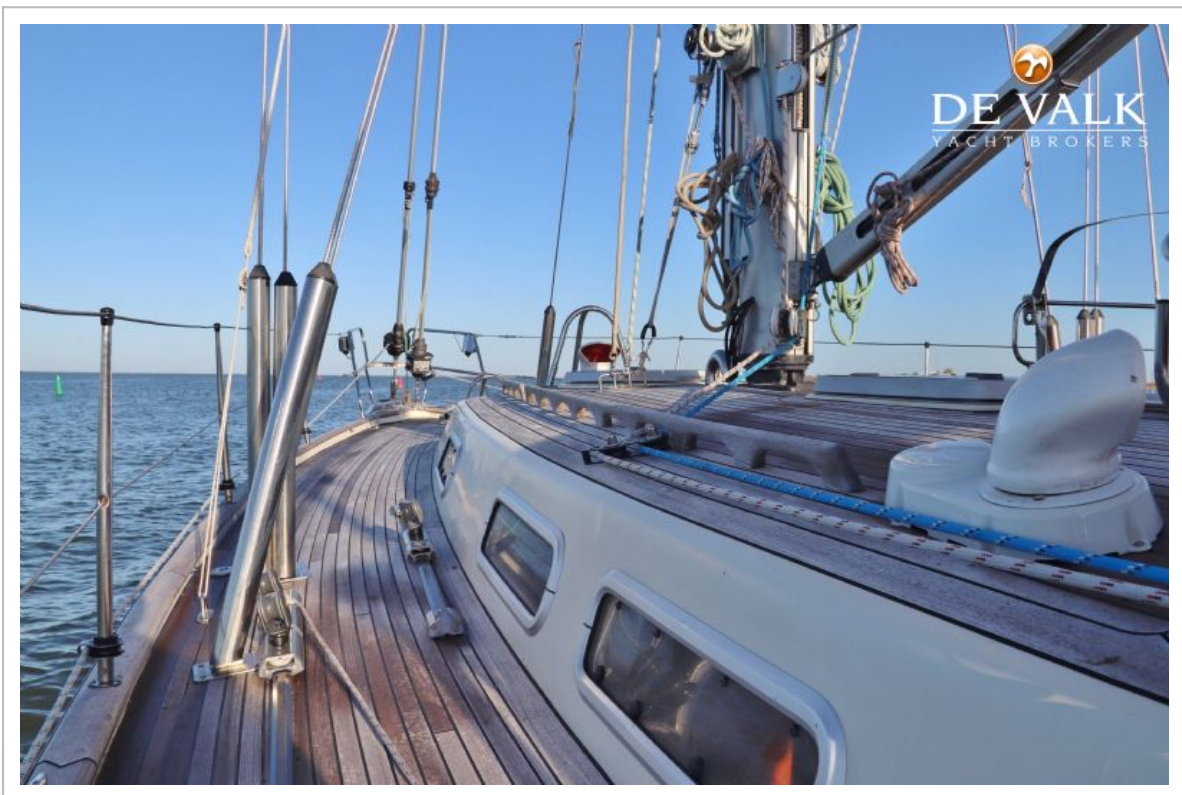
Removable innerforestay	Dyna-One (2017)
Stormjib	(1993)
Reefing System	main in-mast furling
Backstay adjuster	Harken (2017)
Boomvang	gasspring Sparcraft
Primary sheet winch	(2004)
Secondary sheet winch	(2006) 2x Andersen 46ST Electric
Genoa sheetwinches	2x Andersen 58ST Electric
Halyard winches	2 x Lewmar 43ST
Spinnaker winch	2 x Lewmar 43ST
Spi-pole	aluminium 2 x (2000 + 2017)
Extra info	removable Dyna One backstays



NAJAD 420



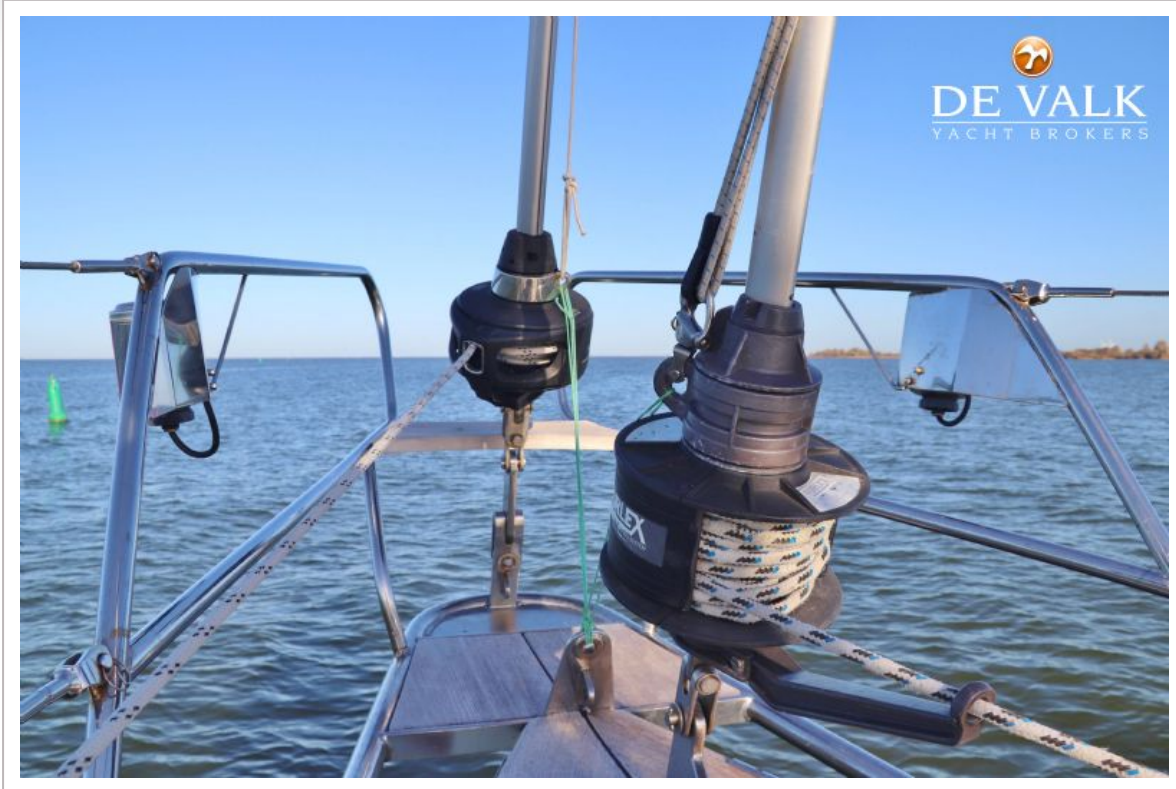
NAJAD 420



NAJAD 420



NAJAD 420



NAJAD 420



NAJAD 420



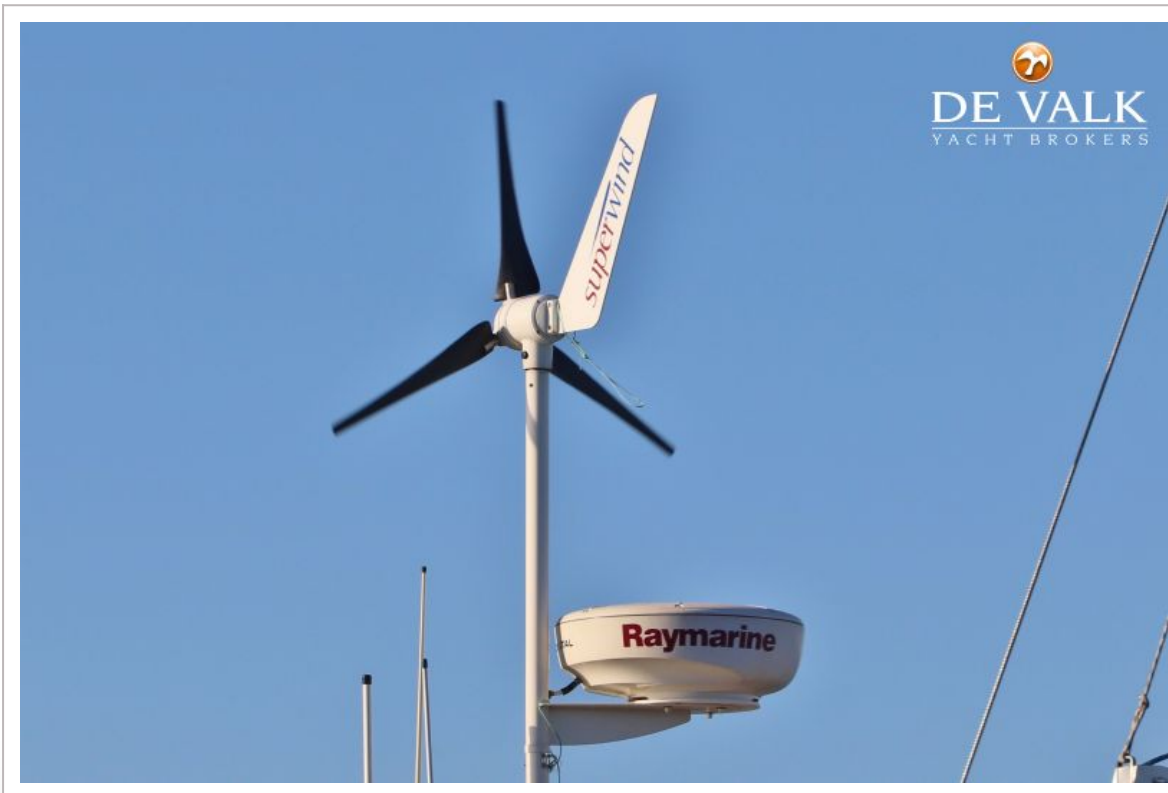
NAJAD 420



NAJAD 420



NAJAD 420



NAJAD 420



NAJAD 420



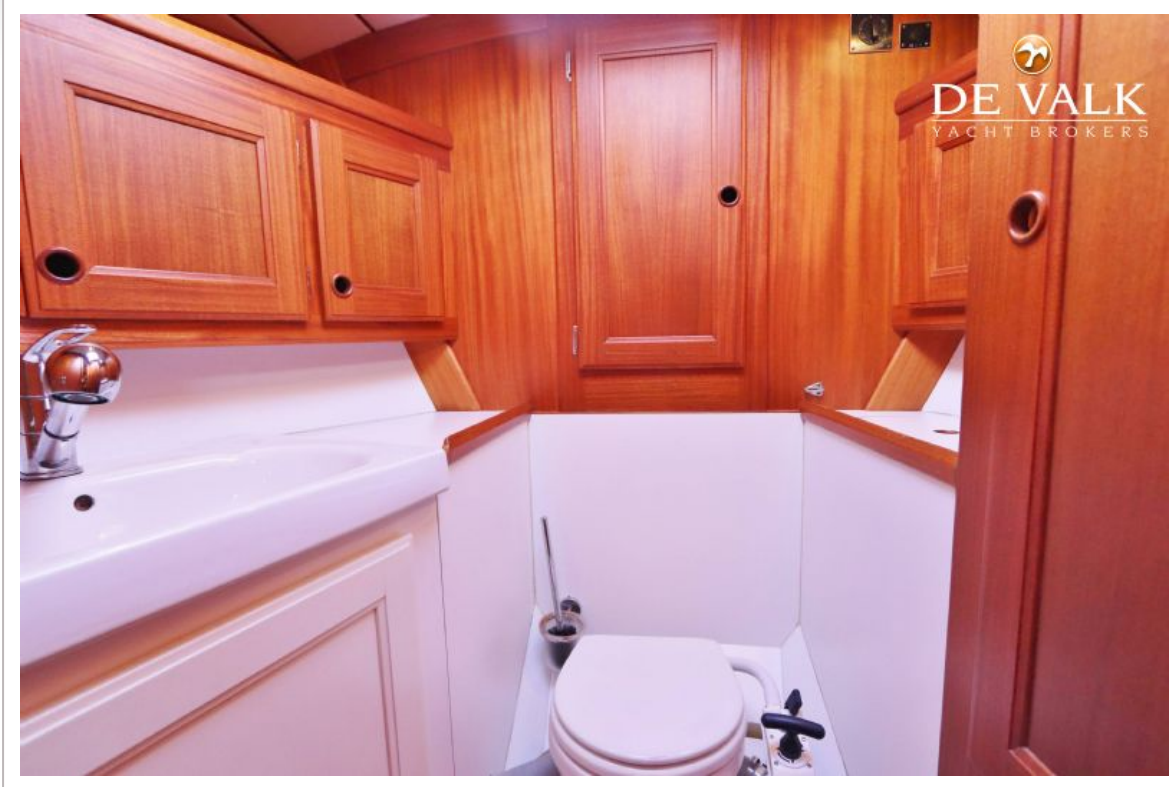
NAJAD 420



NAJAD 420



NAJAD 420



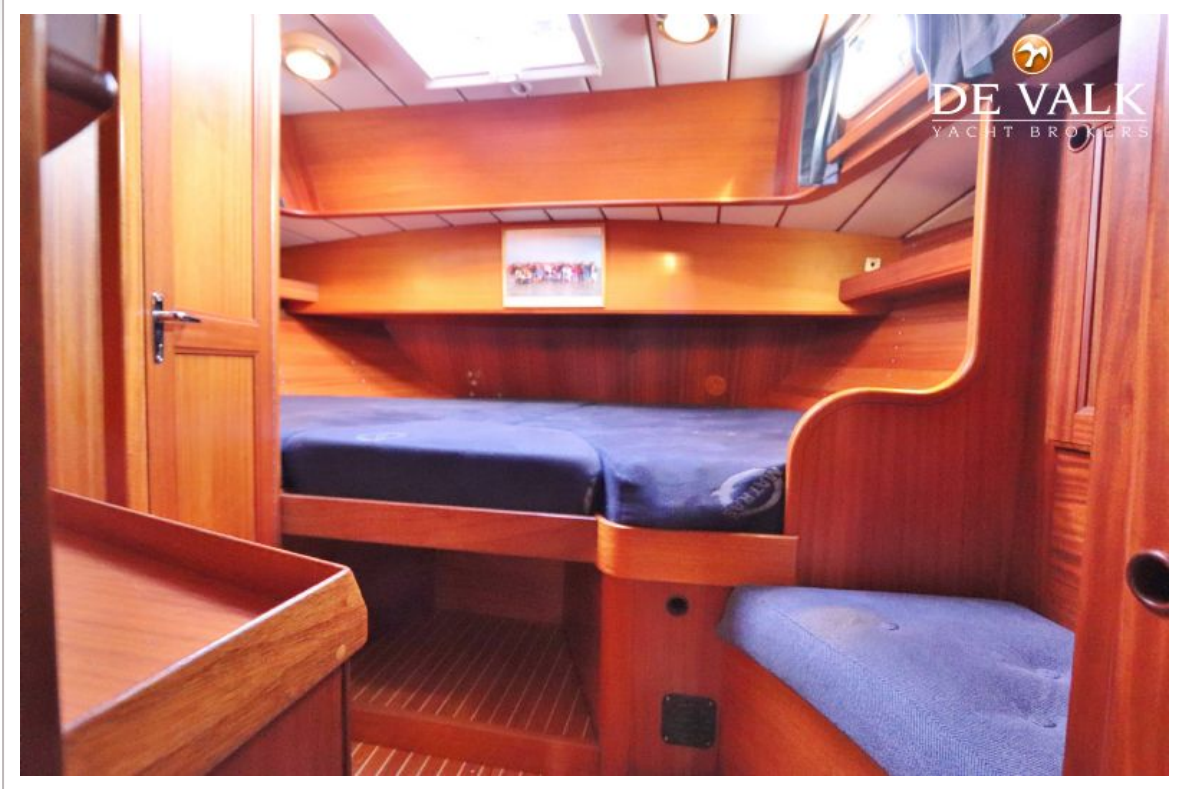
NAJAD 420



NAJAD 420



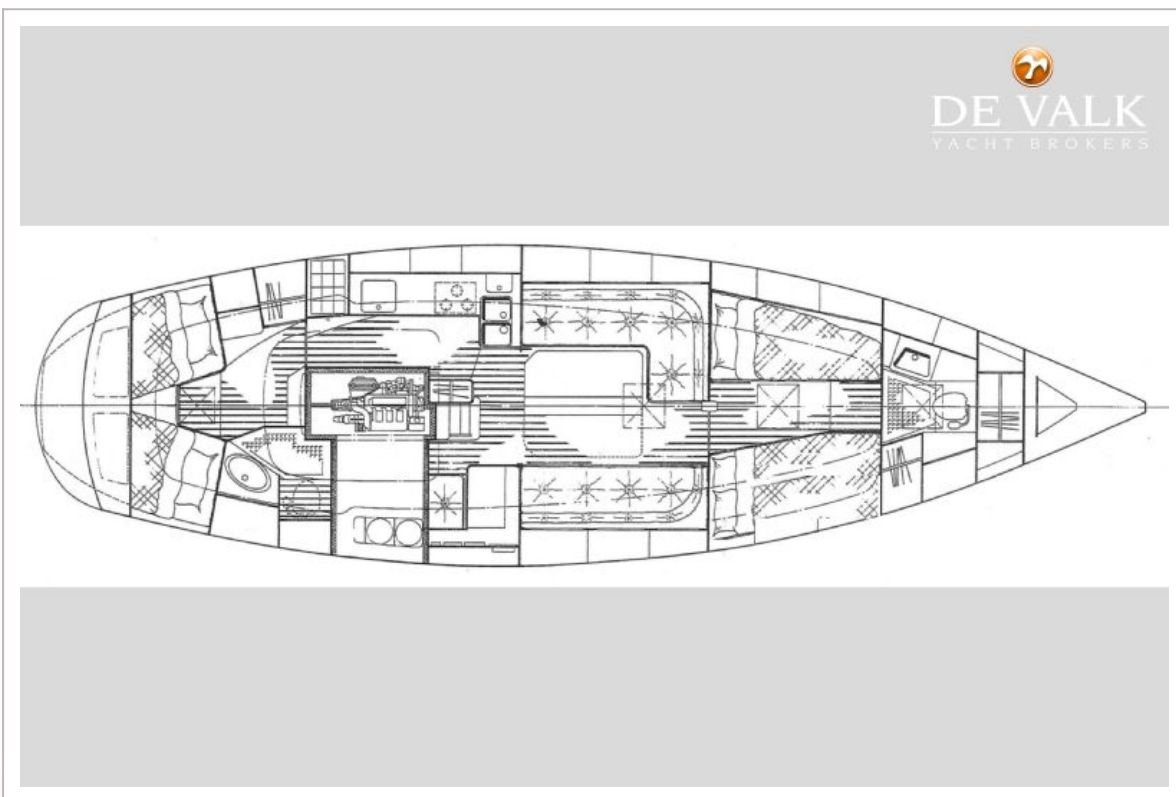
NAJAD 420



NAJAD 420



NAJAD 420



NAJAD 420

