



DE VALK
YACHT BROKERS



BENETEAU OCEANIS 41 1



DE VALK
YACHT BROKERS

BROKER'S COMMENTS

Beneteau reached with the Oceanis range a large group of yachtsman who want to sail with great amount of safety, comfort & style. This 411 Clipper model is a successful Finot design with ample headroom, live and stowage space under deck and good sailing performance and live aboard comfort on the deck. In the hands of her second owner, who bought the yacht in 2005 at De Valk Zeeland, she gave good times on board.

Ger Bayens

SPECIFICATIONS

Dimensions	12.71 x 3.95 x 1.70 (m)	Builder	Beneteau
Built	2001	Cabins	3
Material	GRP	Berths	6
Engine(s)	1 x Volvo Penta MDF 22L diesel	Hp/Kw	52.00 (hp), 38.22 (kw)
Asking price	sold (VAT)	Lying	at sales office

CONTACT

Sales office	De Valk Sint Annaland B.V.	Telephone	+31 (0)166 601 000
Address	Koelhuisweg 4 4697 RM Sint Annaland NL	E-mail	sintannaland@devalk.nl

DISCLAIMER

These particulars are given in good faith as supplied but cannot be guaranteed.



GENERAL

Model	BENETEAU OCEANIS 411
Type	sailing yacht
LOA (m)	12,71
LWL (m)	11,00
Beam (m)	3,95
Draft (m)	1,70
Air draft (m)	18,50
Headroom (m)	1,92
Year built	2001
Builder	Beneteau
Country	France
Designer	Groupe Finot
Displacement (t)	8,5
Ballast (tonnes)	cast iron 2.5
CE norm	A
Hull material	GRP
Hull colour	white
Hull shape	round-bilged
Keel type	bulb keel
Superstructure material	GRP
Deck material	GRP
Deck finish	teak
Superstructure deck finish	non-skid moulded in
Cockpit deck finish	teak
Antifouling (year)	Hempel selfpolishing Juli 2016
Dorades	2x
Window material	perspex
Deckhatch	7x
Portholes	aluminium 8x
Fuel tank (litre)	polyethylene 150 Ltrs



Level indicator (fuel tank)	yes
Freshwater tank (litre)	GRP 2x moulded tanks 550 Ltrs total
Wheel steering	mechanical Goyot (leather covered)
Emergency tiller	yes
Extra info	Some screw props in the teak deck needs to be redone

ACCOMMODATION

Cabins	3
Berths	6
Interior	cherry
Layout	saloon, 3 cabins, 2 heads
Floor	wood
Saloon	yes
Headroom saloon (m)	1,92
Heating	diesel ducted hot air Webasto
Chart table	yes
Aft Cabin	2x
Dinette	yes
Opening door to cockpit	yes
Galley	yes
Countertop	corian Antium
Sink	GRP 2x
Cooker	calor gas Eno 2-flame
Oven	Eno
Fridge	with freezer compartment Frigomatic
Hot water system	220V + engine
Water pressure system	electrical
Manual and/or foot pump	yes
Owners cabin	double bed
Bed length (m)	2,00 x 1,45
Wardrobe	hanging and shelves



Bathroom	en suite
Toilet	en suite
Toilet system	manual
Wash basin	in the bathroom
Shower	en suite
Guest cabin 1	double bed
Bed length (m)	2,00 x 1,45
Wardrobe	hanging and shelves
Bathroom	shared
Toilet system	manual
Wash basin	in the bathroom
Shower	shared
Guest cabin 2	double bed
Bed length (m)	2,00 x 1,45
Wardrobe	hanging and shelves
Bathroom	shared
Toilet system	manual
Wash basin	in the bathroom
Shower	shared
Extra info	Fly- screens + curtains + sun blades

MACHINERY

No of engines	1
Make	Volvo Penta
Type	MDF 22L
HP	52,00
kW	38,22
Fuel	diesel
Year installed	2001
Maximum speed (kn)	8
Cruising speed (kn)	7



Consumption (l/hr)	4
Engine cooling system	freshwater heat exchanger
Drive	shaft
Engine controls	bowden cable
Gearbox	mechanical
Bowthruster	electric 95 Kgf with remote control
Exhaust	watercooled
Propeller type	fixed
Propeller blades	3x
Propeller shaft material	stainless steel
Manual bilge pump	yes
Electrical installation	12/230V
Batteries	5x
Start battery	1x 70 Ah
Service battery	4x deep cycle
Battery monitor	Mastervolt
Battery charger	Dolphin 12V/40 Ah
Inverter	Mobitronic 60W
Wind generator	Air Marine
Diode battery combiners	yes
Shorepower	with cable
Extra info	engine hours counter is defect

NAVIGATION

Compass	Plastimo Olymic 135
Electric compass	From B & G autopilot
Depth sounder/log	B & G Network Quad
Windset	masttop unist not functioning B & G Network Wind
Repeater	Defect?
VHF	connection at chart table and in cockpit Shipmate RS 8300
Autopilot	with hydraulic drive B & G. Network ilot



Radar	JRC 1000
GPS	B & G GPS 12
Plotter/GPS	B & G CND
Navtex	ICS NAV6 Screen
Electronic chart(s)	C-map (update unknown)

EQUIPMENT

Sprayhood	with ss frame work
Bimini	yes
Cockpit cushions	yes
Cockpit table	yes
Bathing platform	yes
Boarding ladder	stainless steel
Transom door	yes
Deck shower	Cold
Anchor	Danforth
Anchor chain	yes
Anchor 2	Danforth
Windlass	electrical Leroy S up& down
Capstan	Leroy S
Outboard support	yes
Davits	stainless steel
Davits controls	manual
Sea railing	wire
Grab rail (superstructure)	wood
Railing side opening gates	2x
Pushpit	yes
Pulpit	yes
Lifebuoy	2x
Radar reflector	yes
Fenders	yes



Mooring lines	yes
TV receiver	Omnimax active antenna
Radio-cd player	yes
Speakers in salon	yes
Clock - barometer	yes
Fire extinguisher	yes
Latest extinguisher survey	Unknown

RIGGING

Rigging	yes
Standing rigging	wire
Brand mast	Z-Spar Deck stepped
Material mast	aluminium
Spreaders	2 sets
Mainsail	yes
Mainsail cover	With Lazy bag & Jack's
Fully battened mainsail	Semi
Genoa II	yes
Genoa furler	Facnor
Genoa cover	yes
A-symetric spi	yes
Stormjib	with hanks on baby stay
Reefing System	quick-one-line-reefing
Boomvang	mechanical and tackle
Primary sheet winch	Bigger than normal Lewmar ST 54
Halyard winches	Lewmar ST 30
Spi-pole	aluminium
Extra info	Twin Backstay
Extra info	Spinlock jammers, mainsheet on coachroof



BENETEAU OCEANIS 411



BENETEAU OCEANIS 411



BENETEAU OCEANIS 411



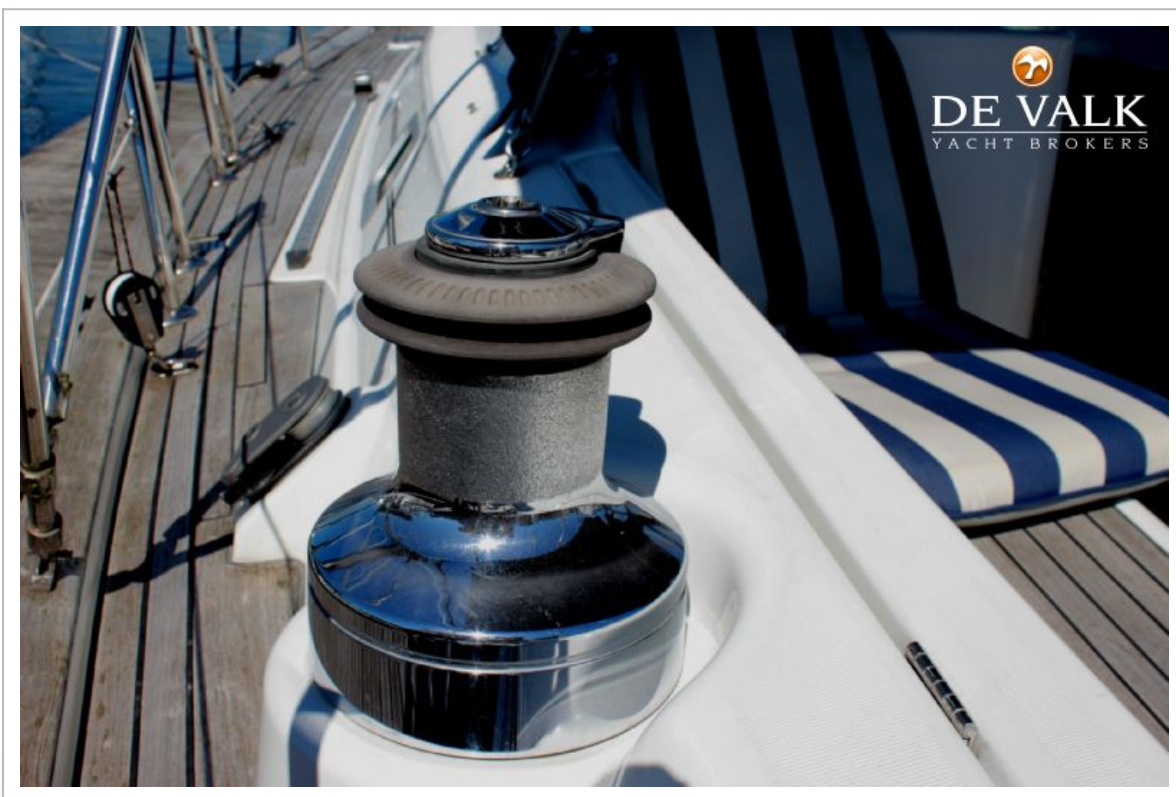
BENETEAU OCEANIS 411



BENETEAU OCEANIS 411



BENETEAU OCEANIS 411



BENETEAU OCEANIS 411



BENETEAU OCEANIS 411



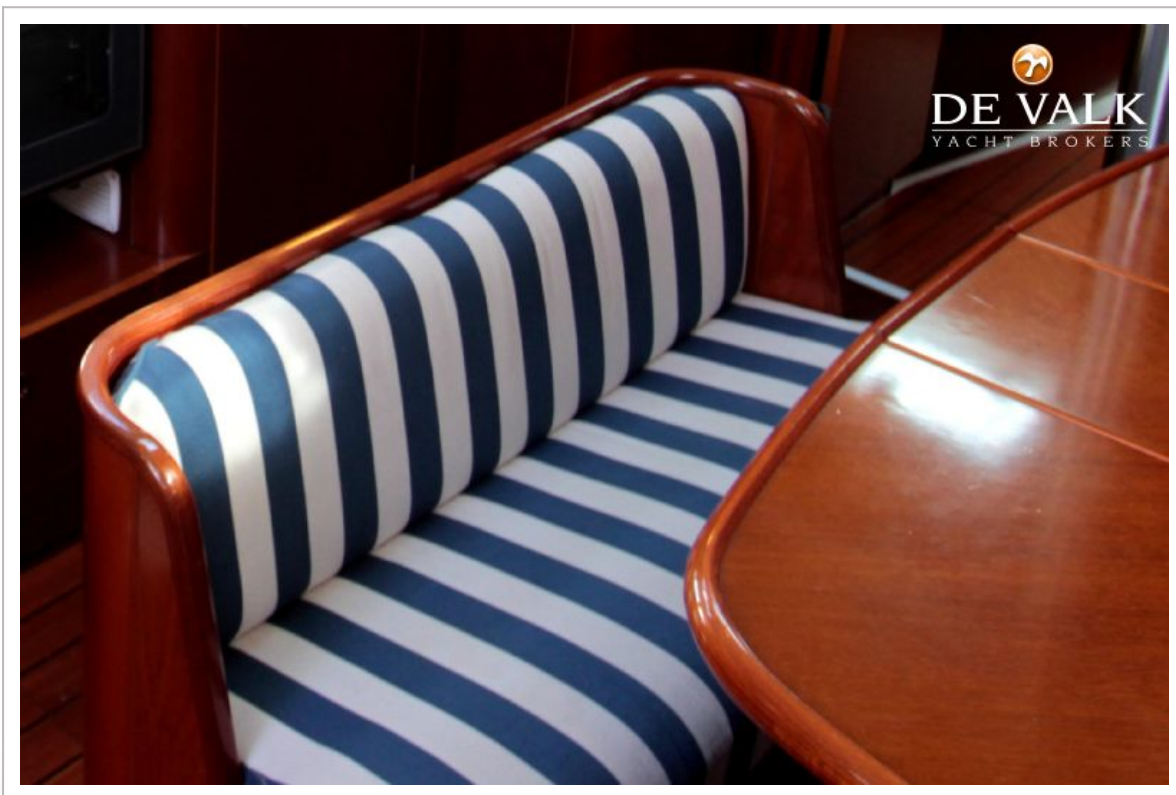
BENETEAU OCEANIS 411



BENETEAU OCEANIS 411



BENETEAU OCEANIS 411



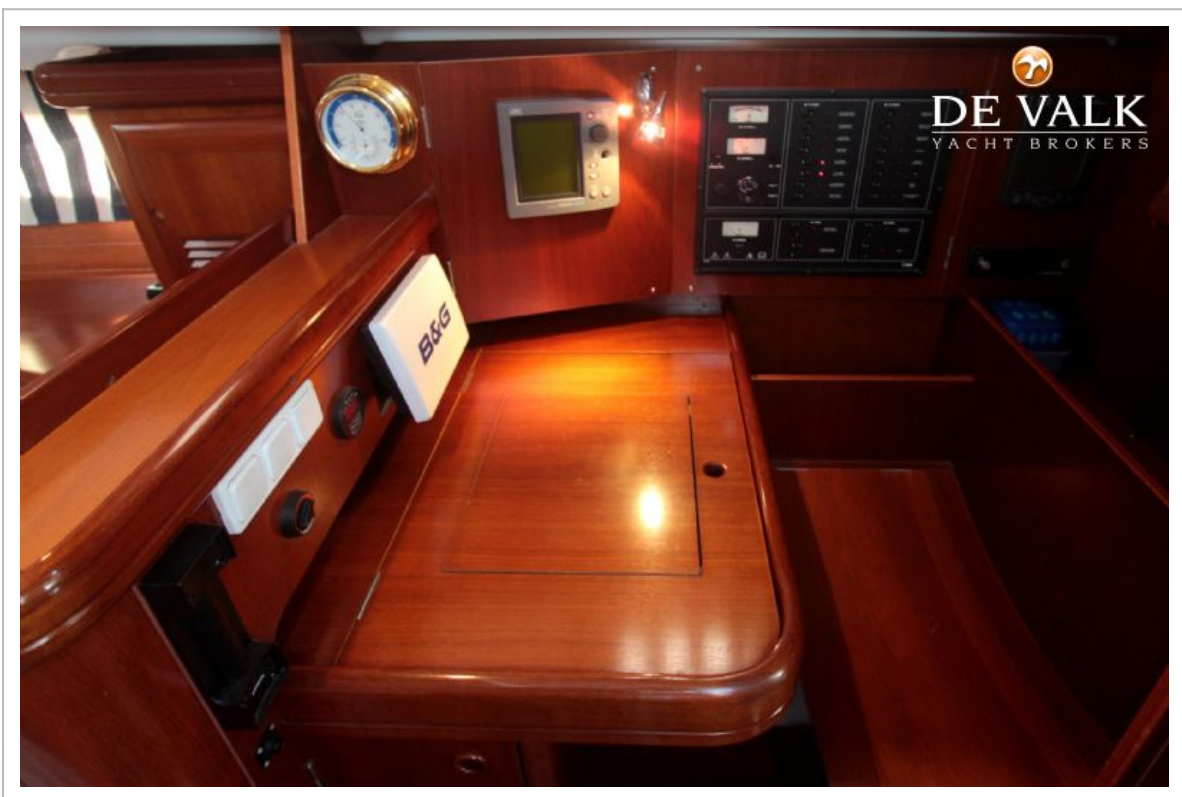
BENETEAU OCEANIS 411



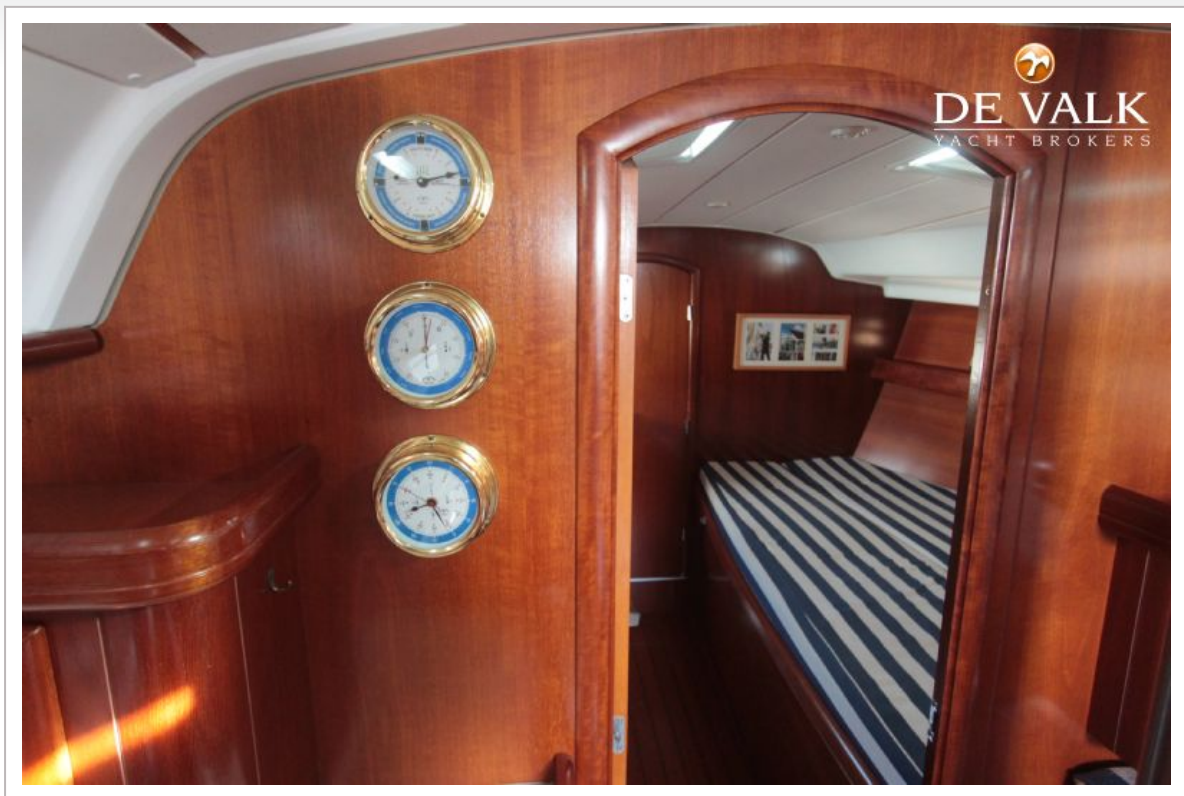
BENETEAU OCEANIS 411

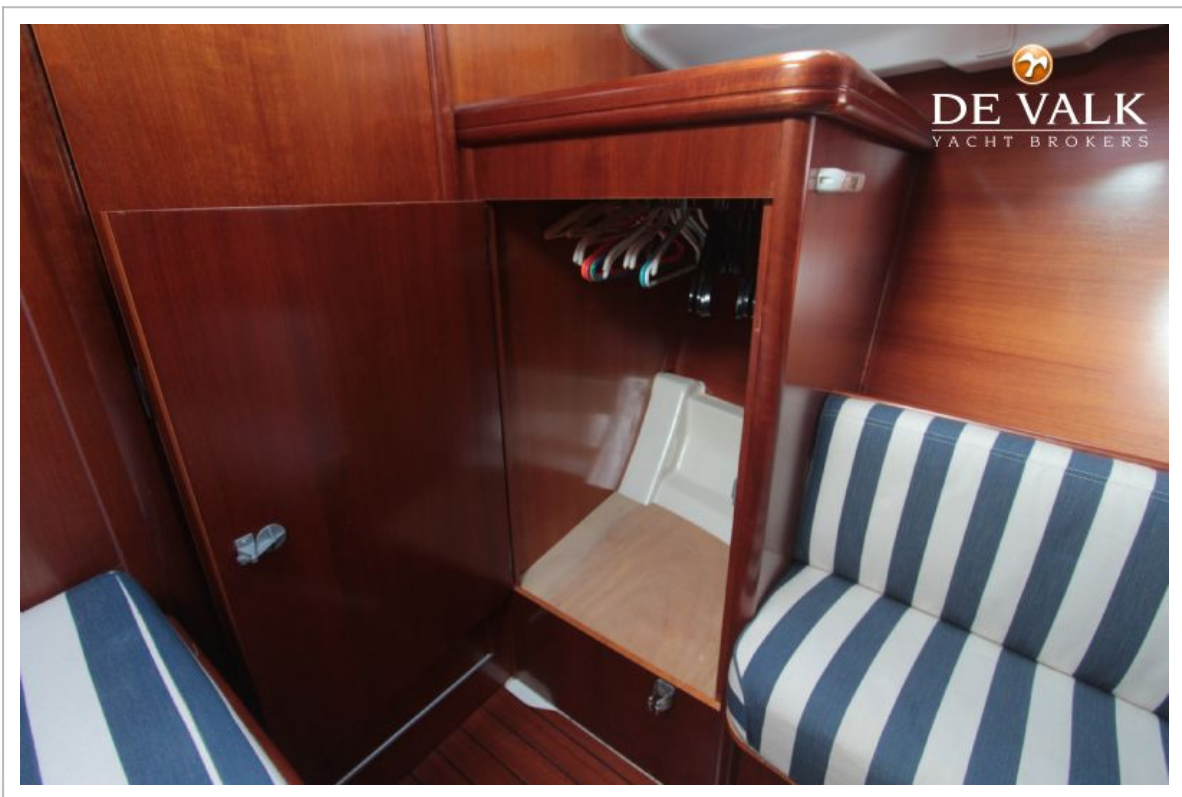


BENETEAU OCEANIS 411



BENETEAU OCEANIS 411

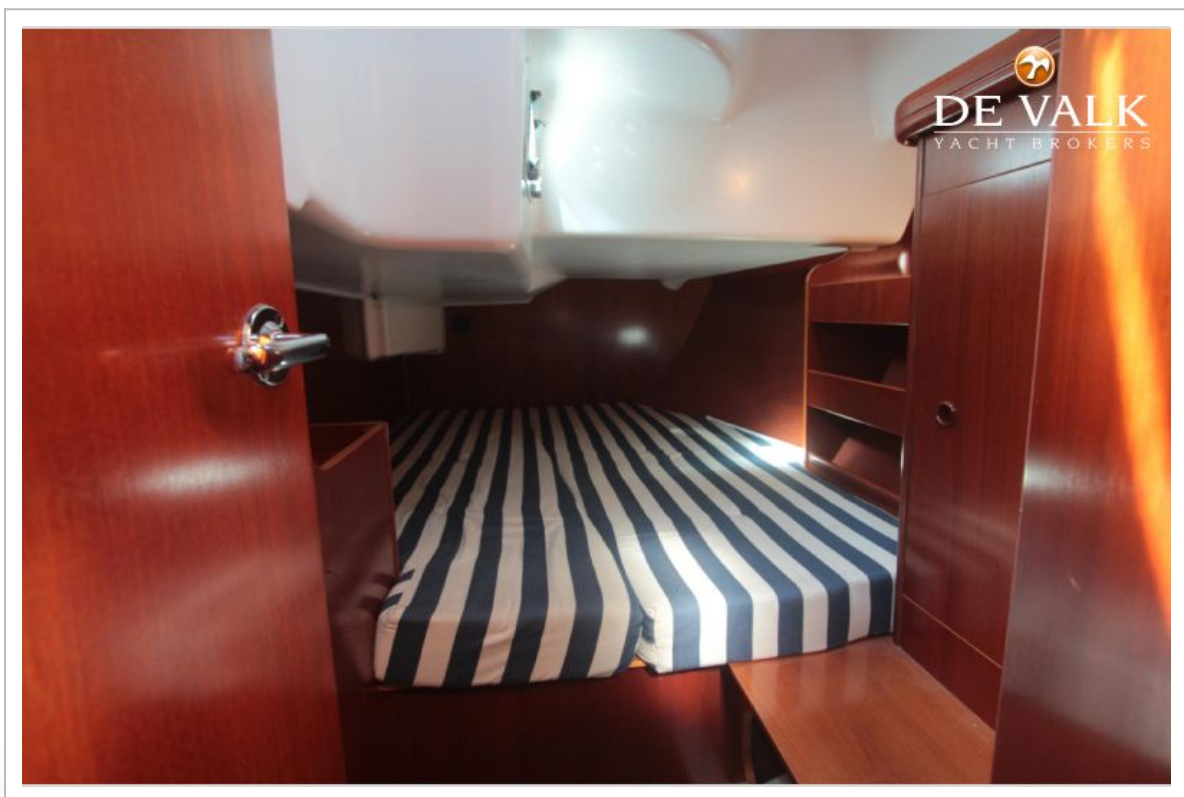
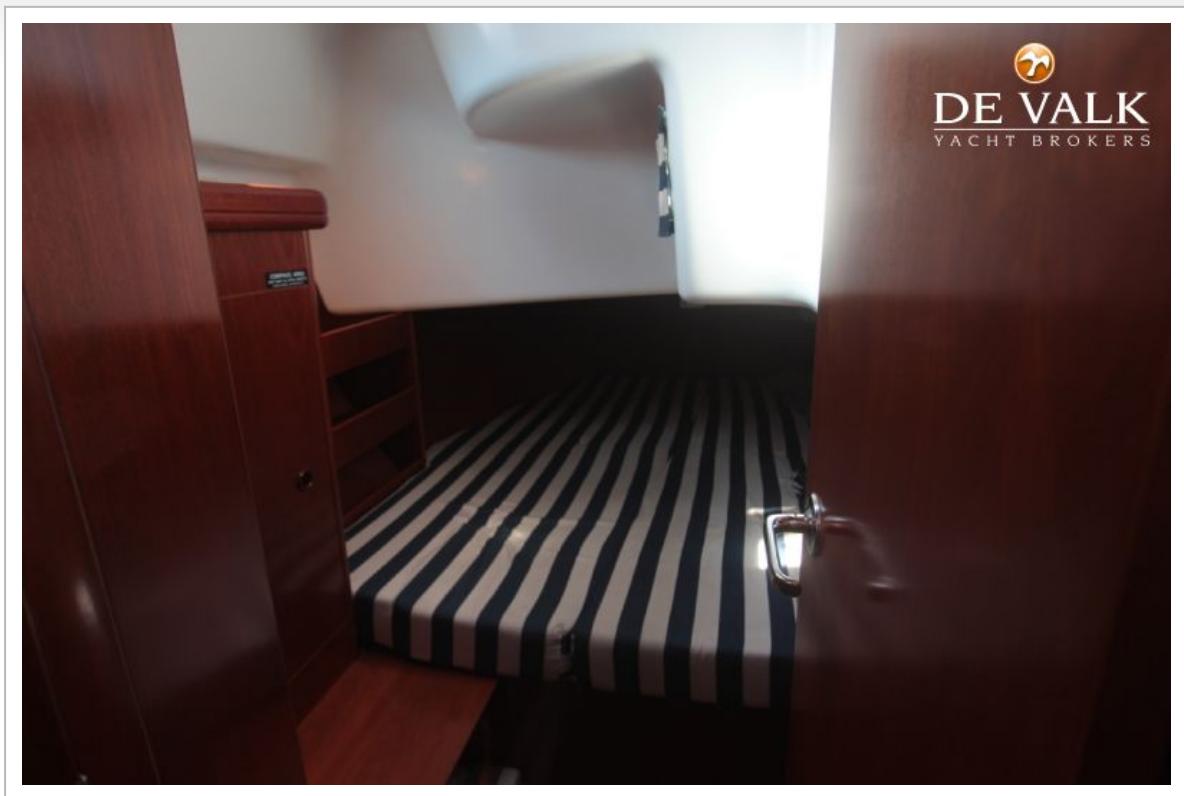




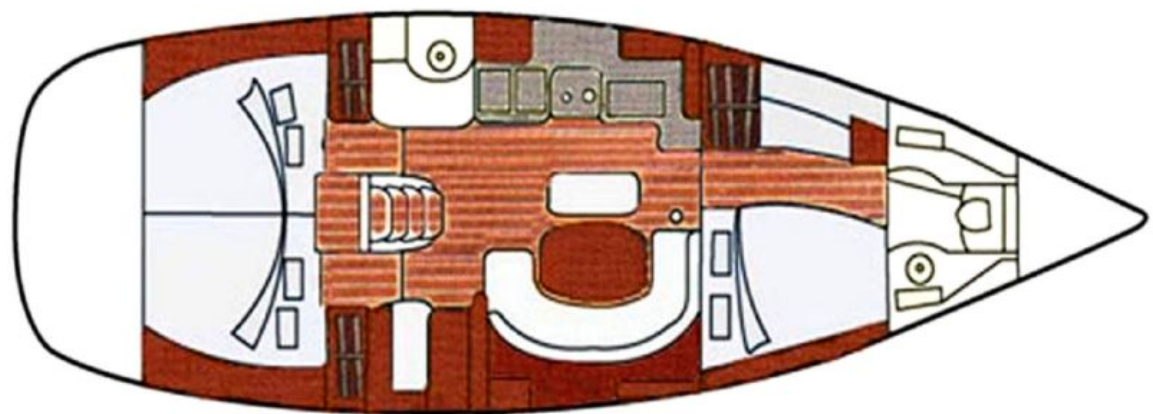
BENETEAU OCEANIS 411



BENETEAU OCEANIS 411



BENETEAU OCEANIS 411





BENETEAU OCEANIS 411

