



## DUFOUR 40 PERFORMANCE



# DUFOUR 40 PERFORMANCE

## BROKER'S COMMENTS

Ever so popular Dufour 40 from the Dufour yard and deservedly so. She is a fast, comfortable and reliable family cruiser with a 3 cabins and 2 bathrooms accommodations. So ideal for family & friends sailing. At her sunny location almost 365 days available as your own private holiday island in the sun and you can even sail her to your next preferred destination. The Performance model has some added performance features and this Dufour has a stronger than standard 50hp engine for added safety. 2nd owner and used for family sailing use, no charter history. Priced to sell! Lying Guadeloupe.

*Marc Weijenberg*

## SPECIFICATIONS

<b>Dimensions</b>	12.32 x 3.90 x 2.10 (m)	<b>Builder</b>	Dufour Yachts
<b>Built</b>	2006	<b>Cabins</b>	3
<b>Material</b>	GRP	<b>Berths</b>	7
<b>Engine(s)</b>	1 x Volvo Penta D2-55 diesel	<b>Hp/Kw</b>	50.00 (hp), 36.80 (kw)
<b>Asking price</b>	sold (VAT )	<b>Lying</b>	elsewhere / Not at sales office

## CONTACT

<b>Sales office</b>	De Valk Thuishaven	<b>Telephone</b>	+31 35 5829042
<b>Address</b>	Peperstraat 7 1411 PX Naarden NL	<b>E-mail</b>	thuishaven@devalk.nl

## DISCLAIMER

These particulars are given in good faith as supplied but cannot be guaranteed.



# DUFOUR 40 PERFORMANCE

## GENERAL

Model	DUFOUR 40 PERFORMANCE
Type	sailing yacht
LOA (m)	12,32
LWL (m)	10,74
Beam (m)	3,90
Draft (m)	2,10
Headroom (m)	1,95
Year built	2006
Builder	Dufour Yachts
Country	France
Designer	Umberto Felci & Patrick Roseo
Displacement (t)	7,8
Ballast (tonnes)	cast iron 2,7
CE norm	A
Hull material	GRP
Hull colour	white
Hull shape	round-bilged
Keel type	fin keel with bulb
Superstructure material	GRP
Rubbing strake	stainless steel
Deck material	GRP
Deck finish	teak
Superstructure deck finish	non-skid moulded in
Cockpit deck finish	teak
Window frame	aluminium
Window material	polycarbonate
Deckhatch	4 x
Portholes	aluminium
Fuel tank (litre)	stainless steel 1 x 160
Freshwater tank (litre)	polyethylene 330 (in 2 tanks)



# DUFOUR 40 PERFORMANCE

Blackwater tank (litre)	polyethylene 1 x
Blackwater tank extraction	deck extraction + uw line
Wheel steering	cable steering Whitlock
Emergency tiller	yes
Extra info	Fuel tank and fuel system cleaned 2022, extra portholes in the aft cabins, wheel pedestal cover with UV protection.

## ACCOMMODATION

Cabins	3
Berths	7
Interior	mahogany Maabi
Floor	teak and holly
Saloon	yes
Headroom saloon (m)	1,92
Heating	diesel ducted hot air Webasto
Chart table	yes
Aft Cabin	2 x
Dinette	yes
Galley	yes
Countertop	yes
Sink	stainless steel 2 x
Cooker	calor gas Eno 2 burner
Oven	calor gas
Fridge	with compressor Isotherm (12v)
Hot water system	220V + engine 20 ltrs
Water pressure system	electrical
Owners cabin	v-bed
Bed length (m)	headroom 1,92 mtr 2,20 x 1,96
Wardrobe	hanging and shelves
Bathroom	en suite I
Toilet	en suite



# DUFOUR 40 PERFORMANCE

Toilet system	manual
Wash basin	in the bathroom
Shower	en suite
Guest cabin 1	double bed
Bed length (m)	headroom 1,98 mtr 1,96 x 1,41
Wardrobe	hanging and shelves
Bathroom	shared II
Toilet	shared
Toilet system	manual
Wash basin	in the bathroom
Shower	shared
Guest cabin 2	double bed
Bed length (m)	headroom 1,98 mtr 1,96 x 1,41
Wardrobe	hanging and shelves

## MACHINERY

No of engines	1
Make	Volvo Penta
Type	D2-55
HP	50
kW	36.80
Fuel	diesel
Year installed	2006
Maximum speed (kn)	8
Cruising speed (kn)	6
Consumption (l/hr)	3
Engine cooling system	freshwater heat exchanger
Drive	sail-drive
Saildrive seal	(new 2023)
Engine controls	bowden cable
Gearbox	mechanical Volvo Penta Saildrive



# DUFOUR 40 PERFORMANCE

Exhaust	watercooled
Propeller type	folding Volvo Penta
Propeller blades	3 x
Manual bilge pump	yes
Electric bilge pump	yes
Electrical installation	12v/220v
Start battery	1 x (2022)
Service battery	3 x (2024)
Battery monitor	Victron
Battery charger	Sterling AB 12-130 (2017)
Solar panel	2 x 130watt
Shorepower	with cable

## NAVIGATION

Compass	Plastimo Horizon
Electric compass	via autopilot
Depth sounder	yes
Depth sounder/log	Raymarine ST60 Tridata
Log	yes
Windset	Raymarine ST60
VHF	Raymarine Ray240E
Autopilot	Raymarine
Radar	Raymarine Quantum Q24C (2017)
GPS	Raymarine
Plotter	Raymarine C95 (2017)
AIS transponder	(2025)
EPIRB	Ocean Signal Epirb1 (exp date 2027)
Navigation lights	LED

## EQUIPMENT

Sprayhood	(2017, refurbished 2024)
-----------	--------------------------



# DUFOUR 40 PERFORMANCE

Bimini	(2017)
Cockpit cushions	yes
Cockpit table	yes
Bathing platform	With an "easy-access" part you can take out of easy access to the cockpit and back.
Boarding ladder	stainless steel
Deck shower	hot + cold
Anchor	CQR Plough
Anchor chain	60 mtr
Windlass	electrical Quick Prince Dp3 (2017)
Dinghy	Optional
Outboard	Optional
Outboard support	yes
Sea railing	yes
Grab rail (superstructure)	teak
Pushpit	yes
Pulpit	yes
Life raft	container Lazilas (2017)
Life raft (pers)	6 persons
Last life raft survey	(2024)
Lifebuoy	yes
Radar reflector	Tri-lens
Fenders	yes
Mooring lines	yes
Radio-cd player	yes
Cockpit speakers	yes
Speakers in salon	yes
Clock - barometer	yes
Fire extinguisher	survey due

## RIGGING



# DUFOUR 40 PERFORMANCE

<b>Rigging</b>	sloop
<b>Standing rigging</b>	wire 2006 (inspected 2022)
<b>Brand mast</b>	Z-Spar
<b>Material mast</b>	aluminium
<b>Spreaders</b>	2 x set
<b>Mainsail cover</b>	Lazy Bag (2016)
<b>Battcars</b>	yes
<b>Fully battened mainsail</b>	(with 3 reefingpoints) Quantum Sails (2018)
<b>High aspect</b>	with battens and UV strip Quantum Sails (2014)
<b>Genoa</b>	yes
<b>Genoa furler</b>	Facnor (2014)
<b>Genoa cover</b>	yes
<b>Stormjib</b>	with Dynema removable stay
<b>Reefing System</b>	slabreefing
<b>Backstay adjuster</b>	mechanical
<b>Boomvang</b>	mechanical and tackle
<b>Primary sheet winch</b>	2 x Harken 48 ST
<b>Halyard winches</b>	2 x Harken 40.2 ST
<b>Spi-pole</b>	aluminium
<b>Extra info</b>	rigging screw covers, extra genoa track cars

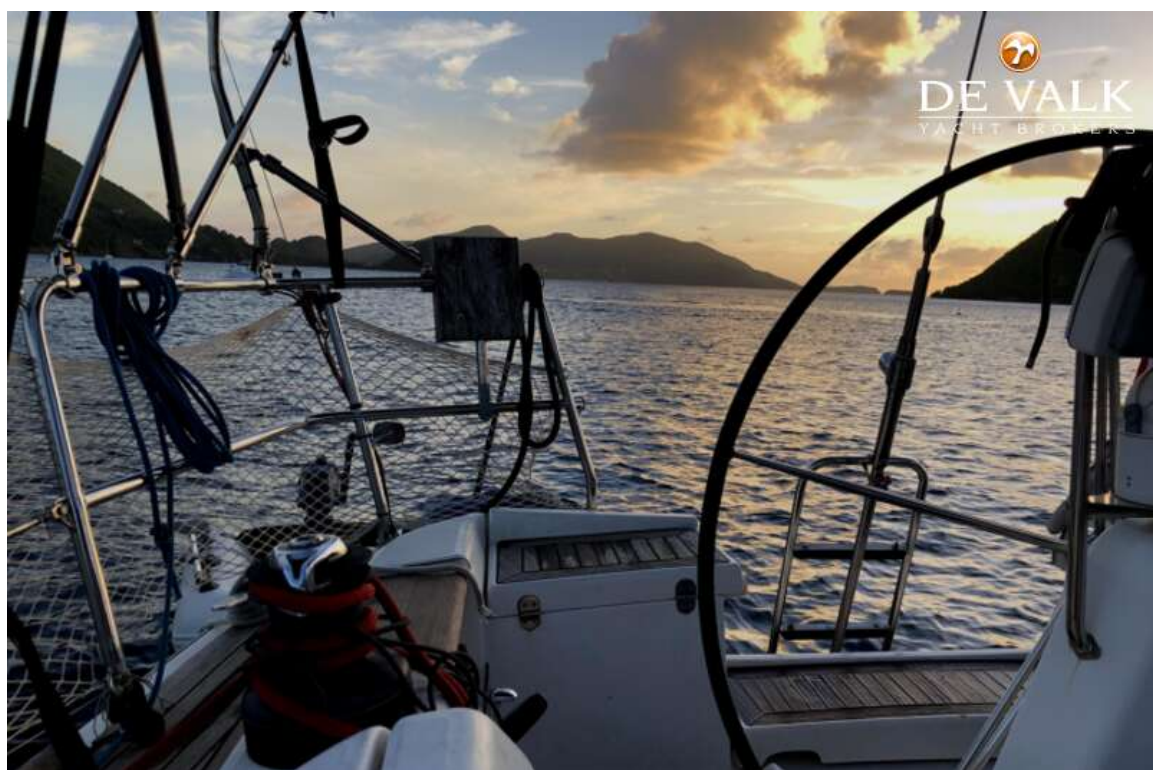




# DUFOUR 40 PERFORMANCE

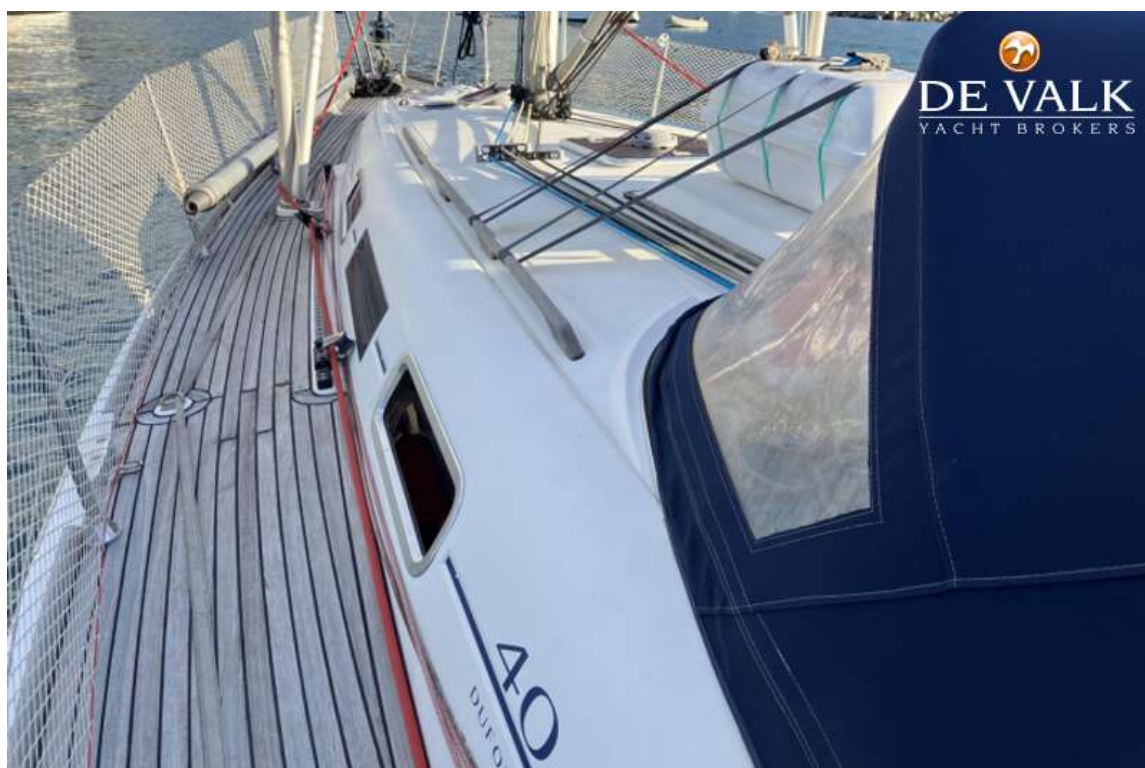


# DUFOUR 40 PERFORMANCE



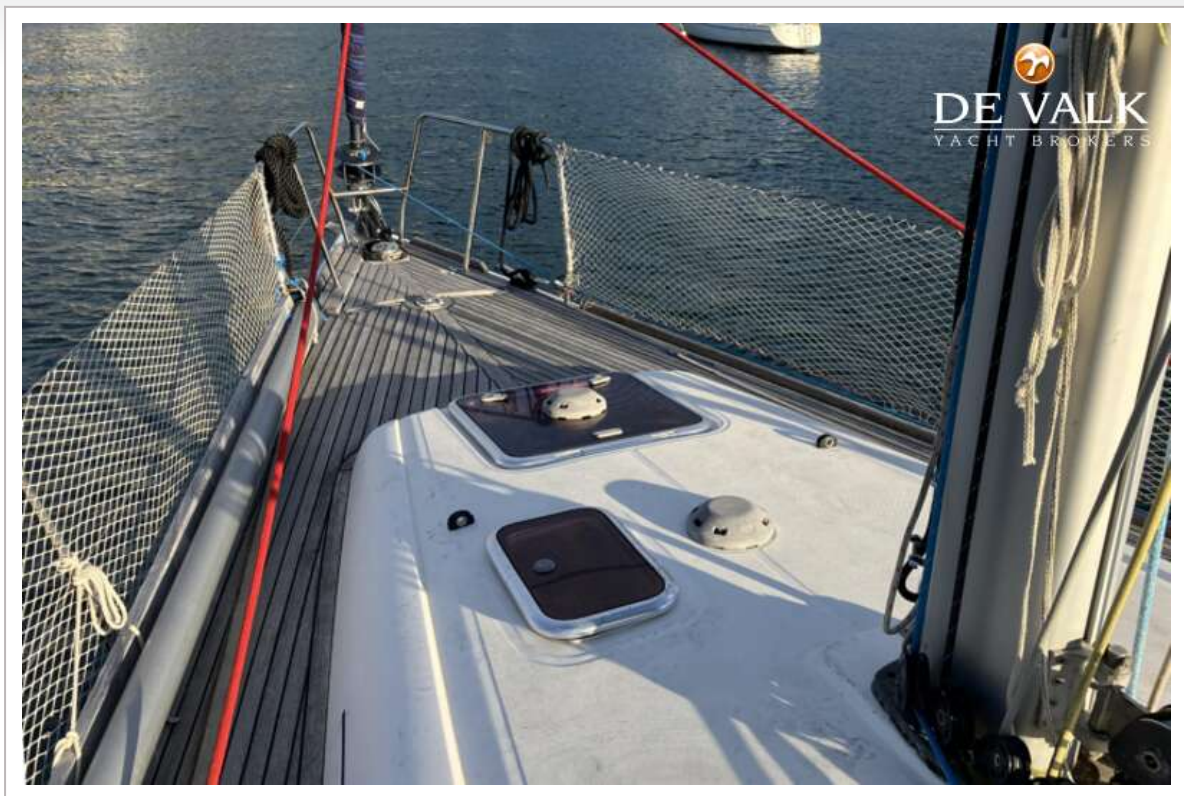


# DUFOUR 40 PERFORMANCE



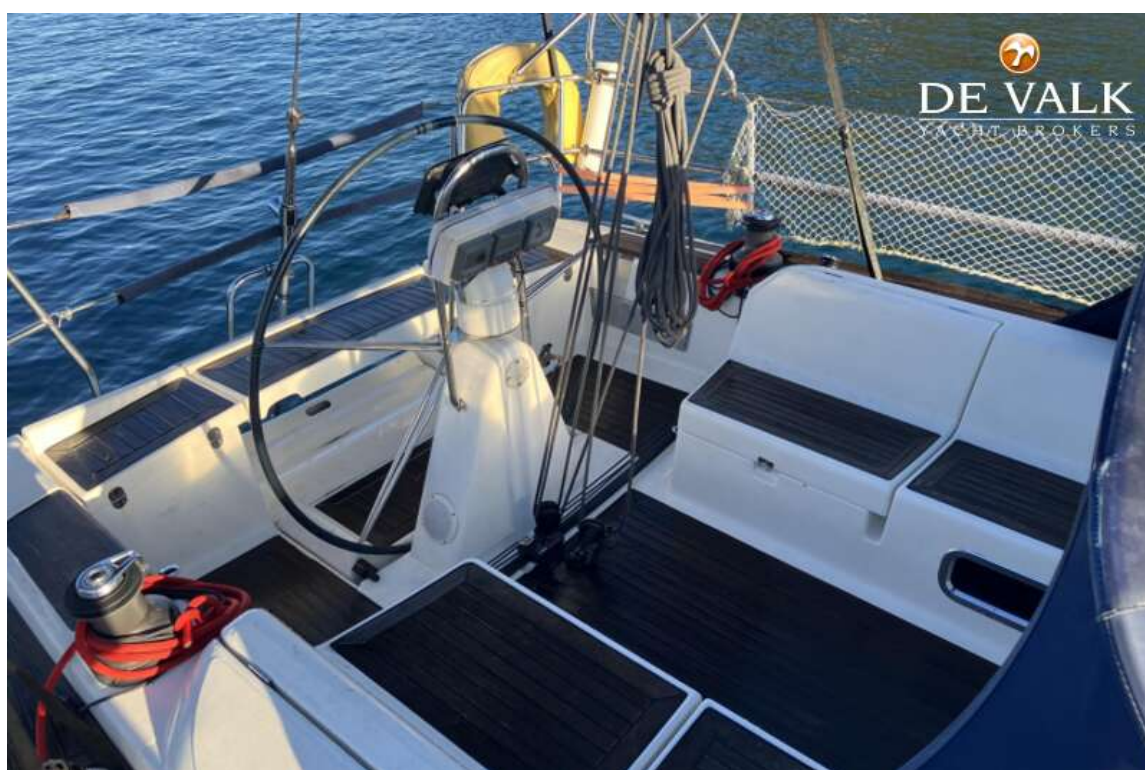
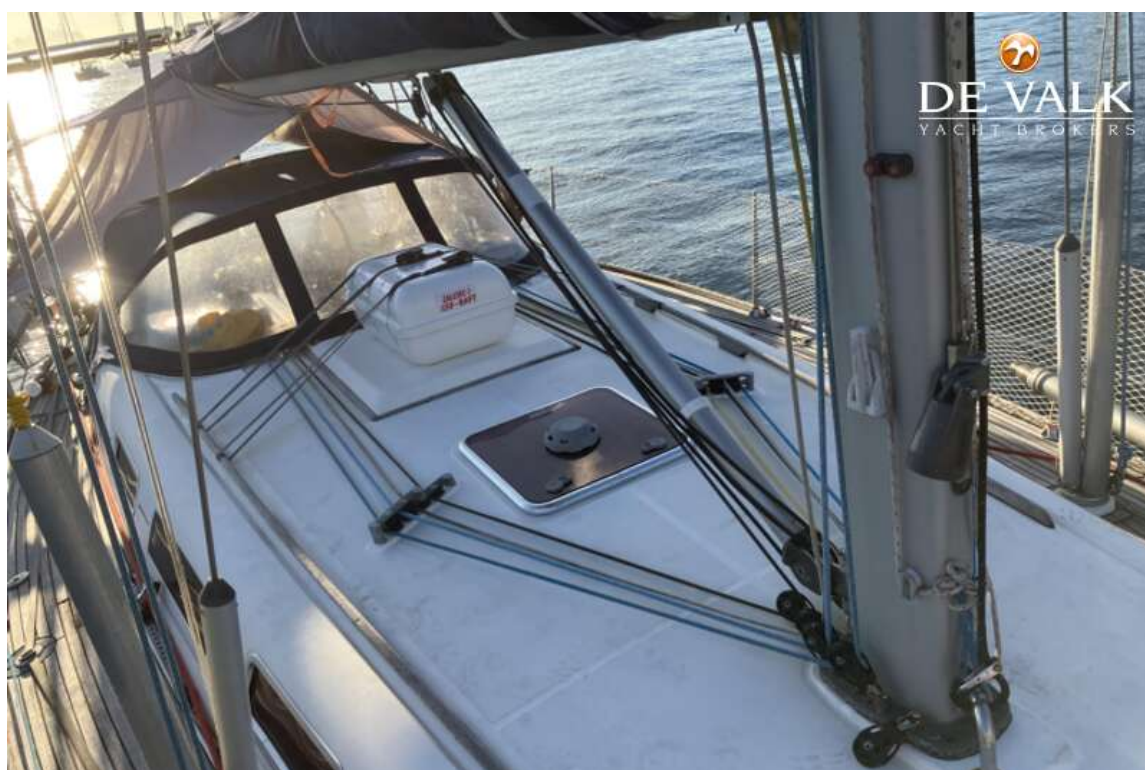


# DUFOUR 40 PERFORMANCE



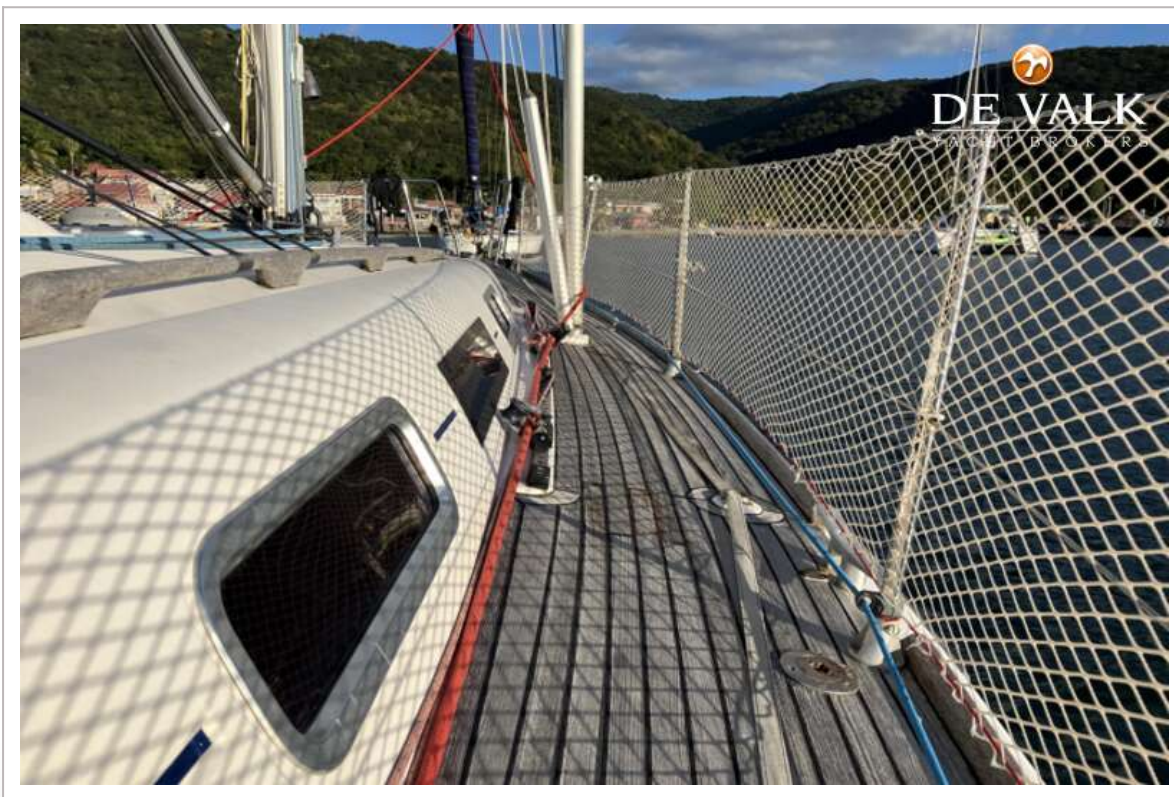


# DUFOUR 40 PERFORMANCE



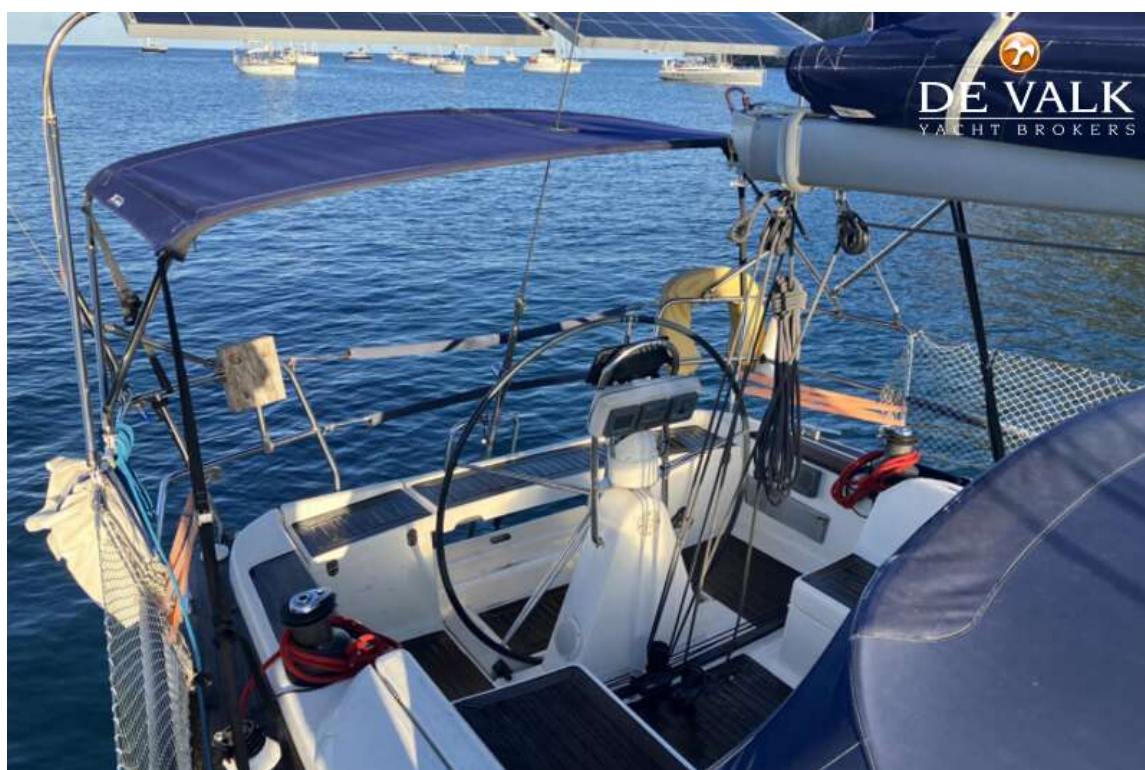


# DUFOUR 40 PERFORMANCE





# DUFOUR 40 PERFORMANCE



# DUFOUR 40 PERFORMANCE

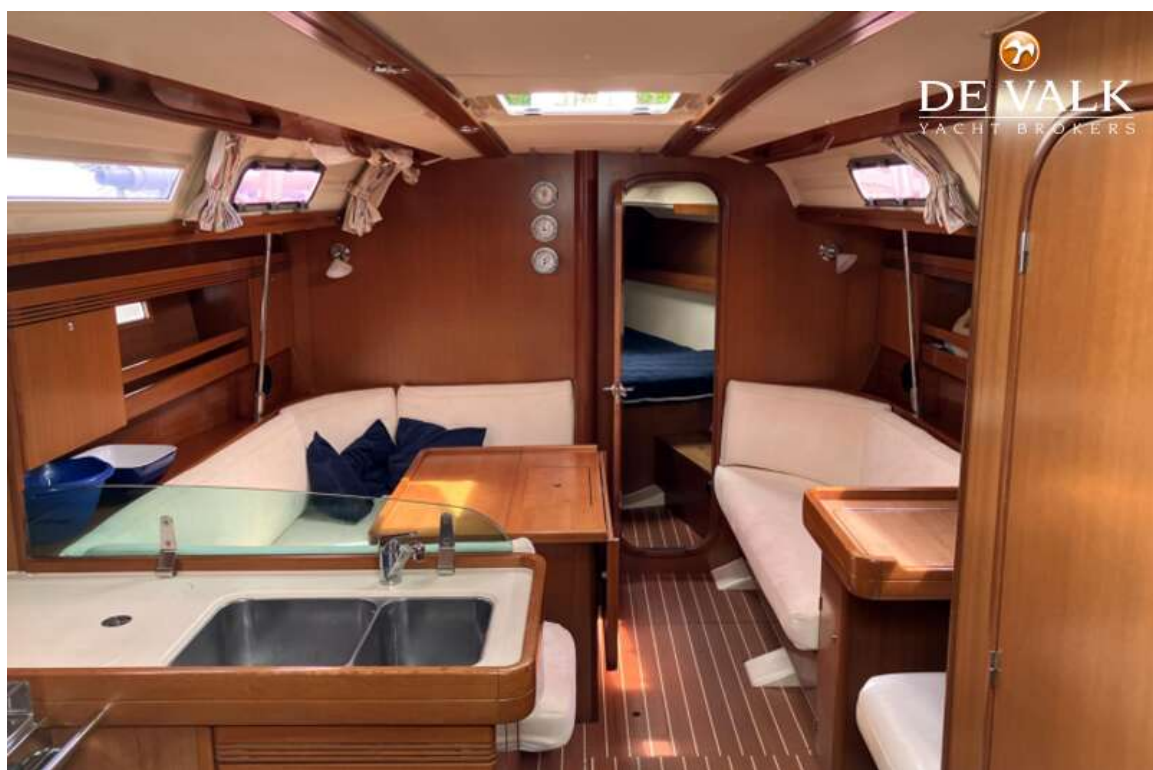




# DUFOUR 40 PERFORMANCE



# DUFOUR 40 PERFORMANCE





# DUFOUR 40 PERFORMANCE

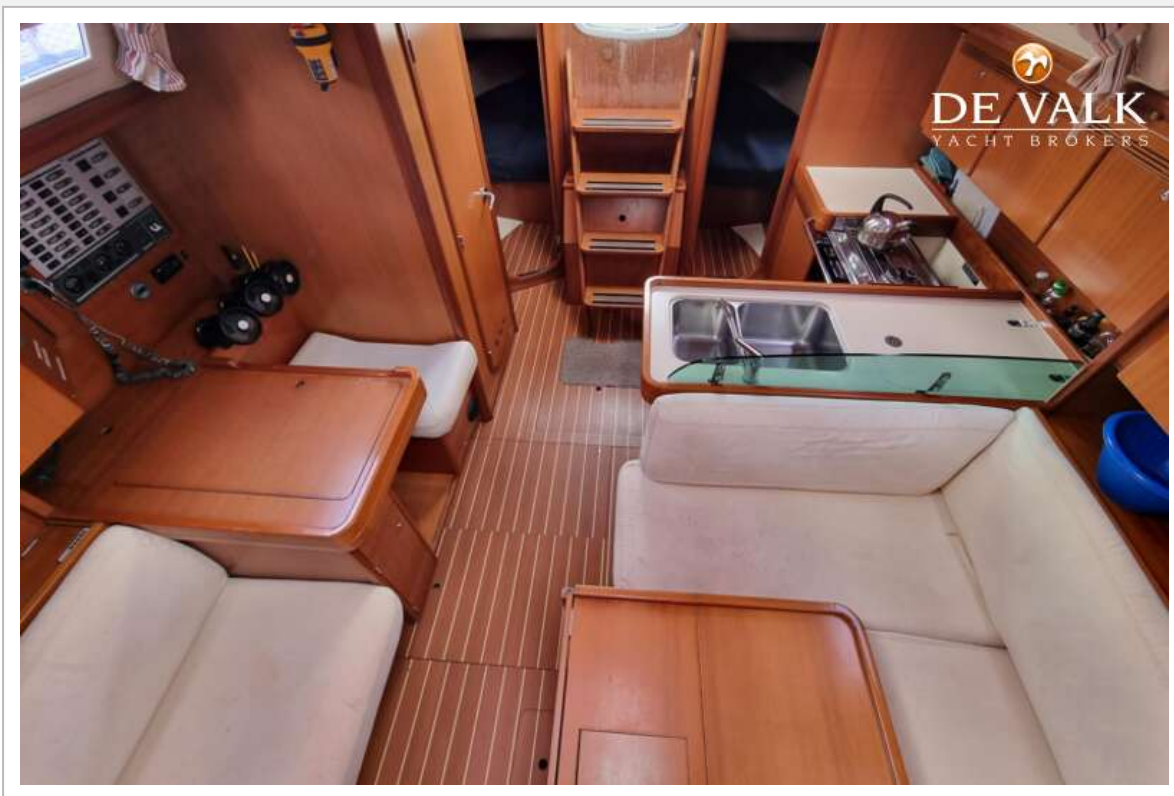


# DUFOUR 40 PERFORMANCE





# DUFOUR 40 PERFORMANCE

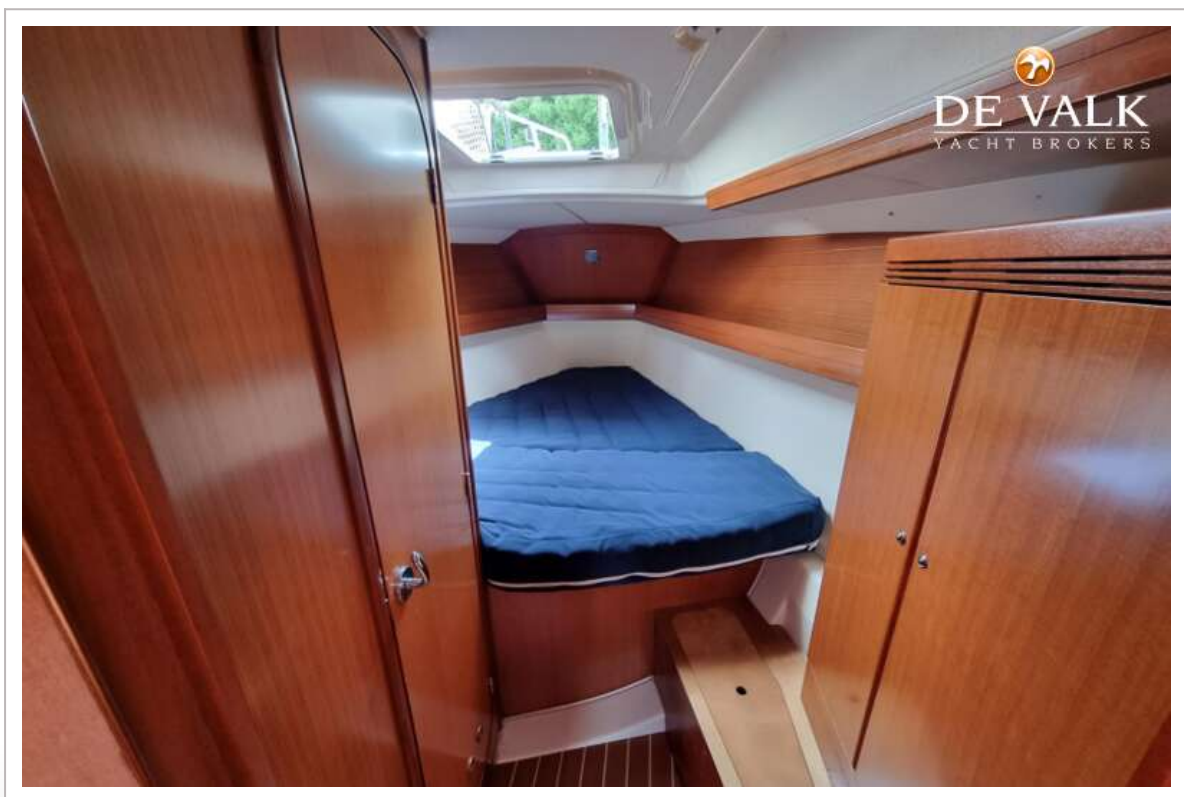


# DUFOUR 40 PERFORMANCE

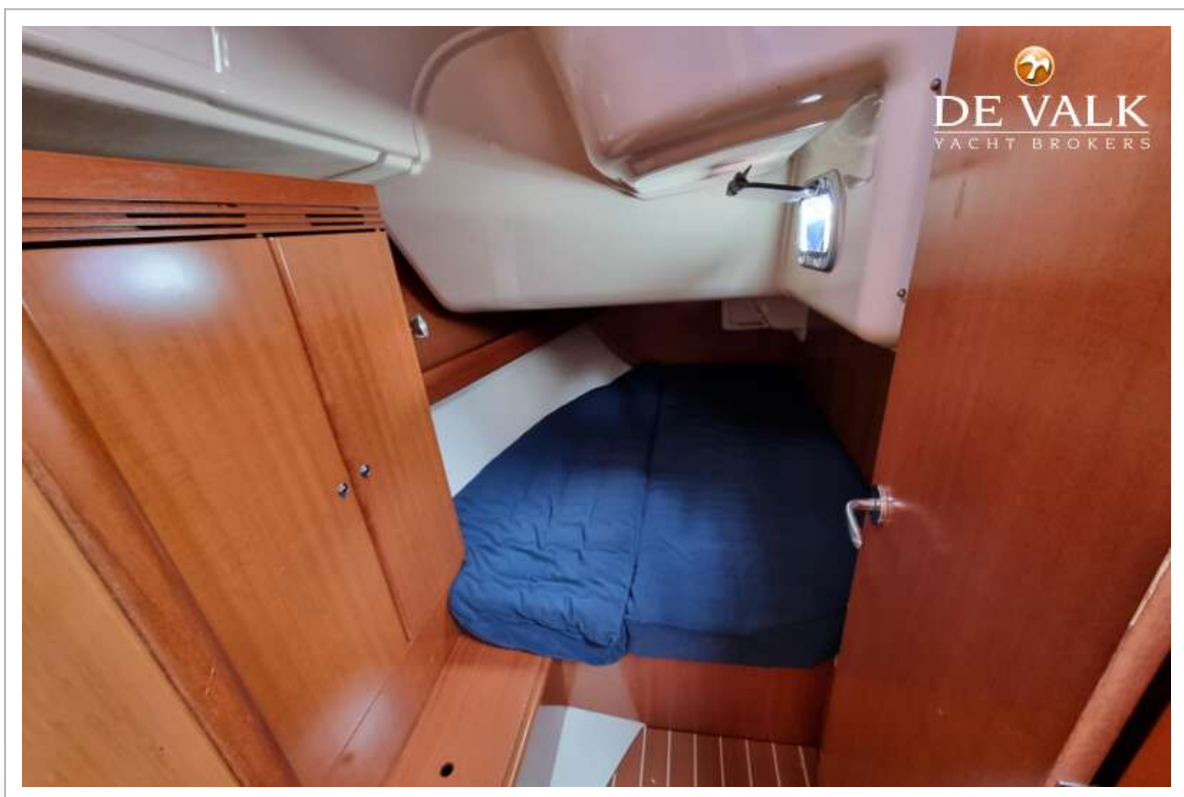
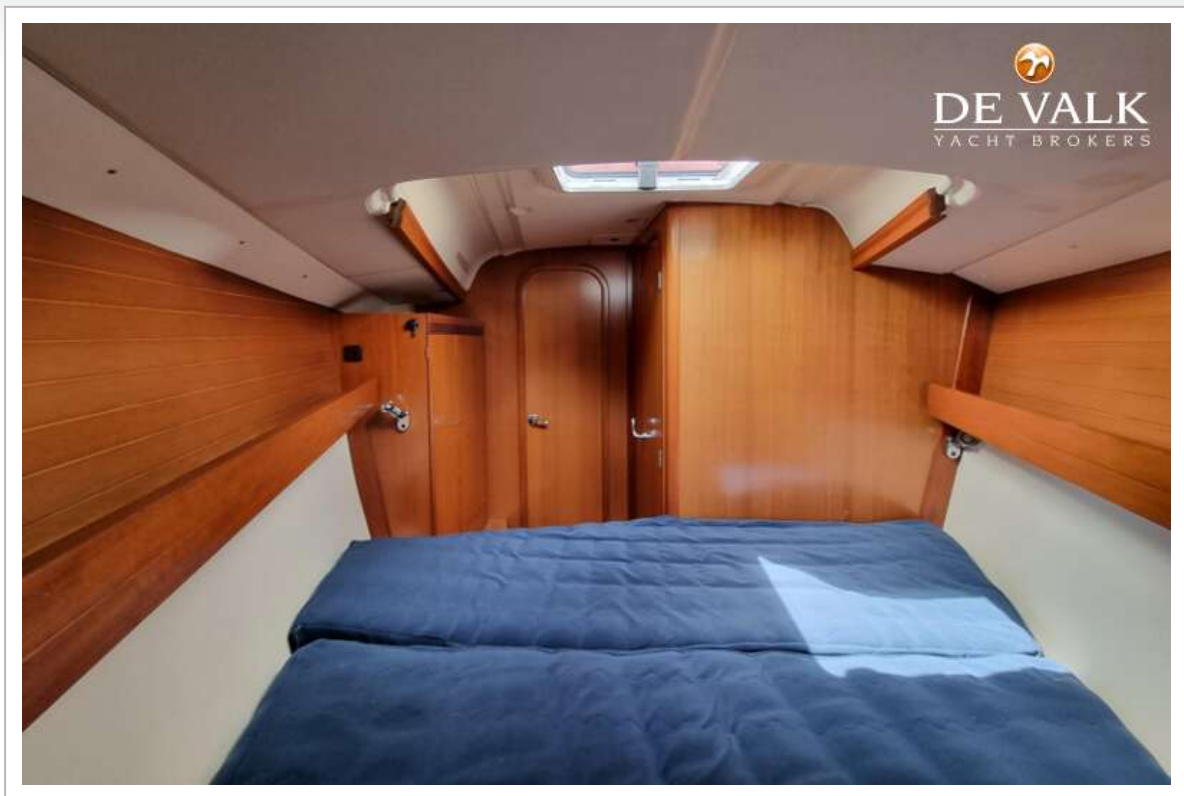




# DUFOUR 40 PERFORMANCE

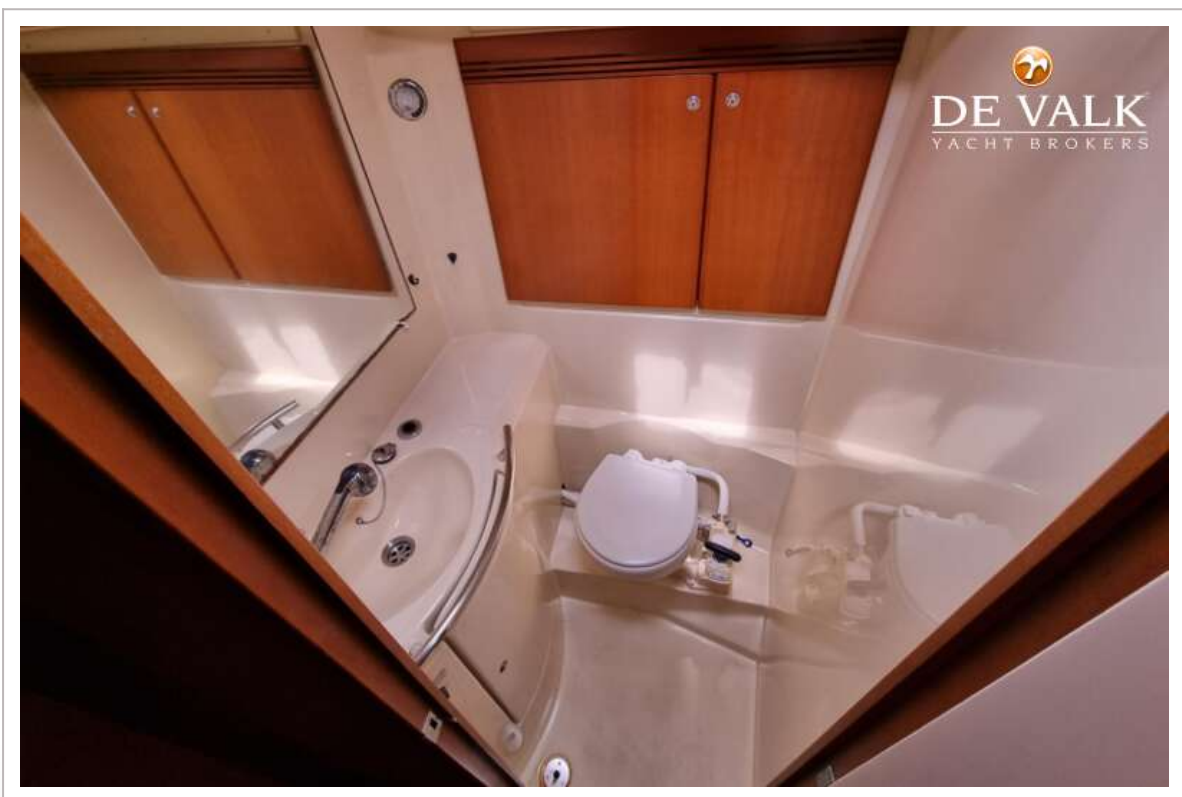


# DUFOUR 40 PERFORMANCE

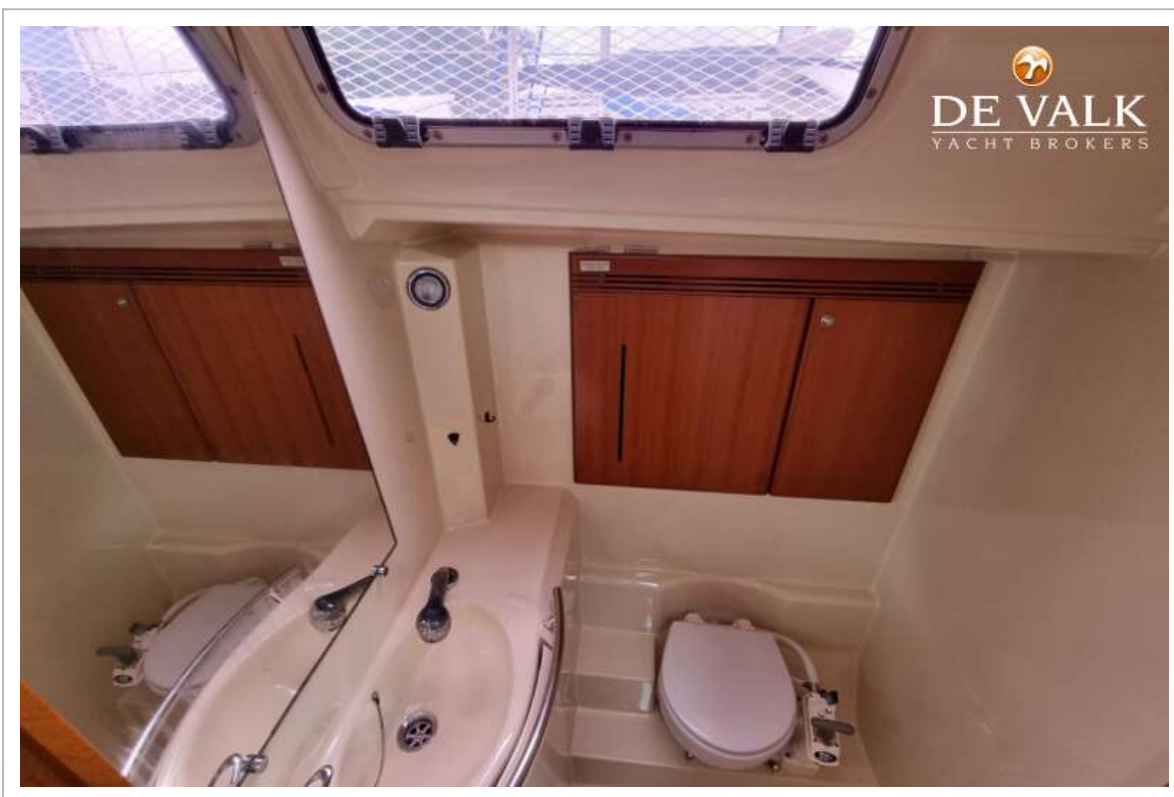
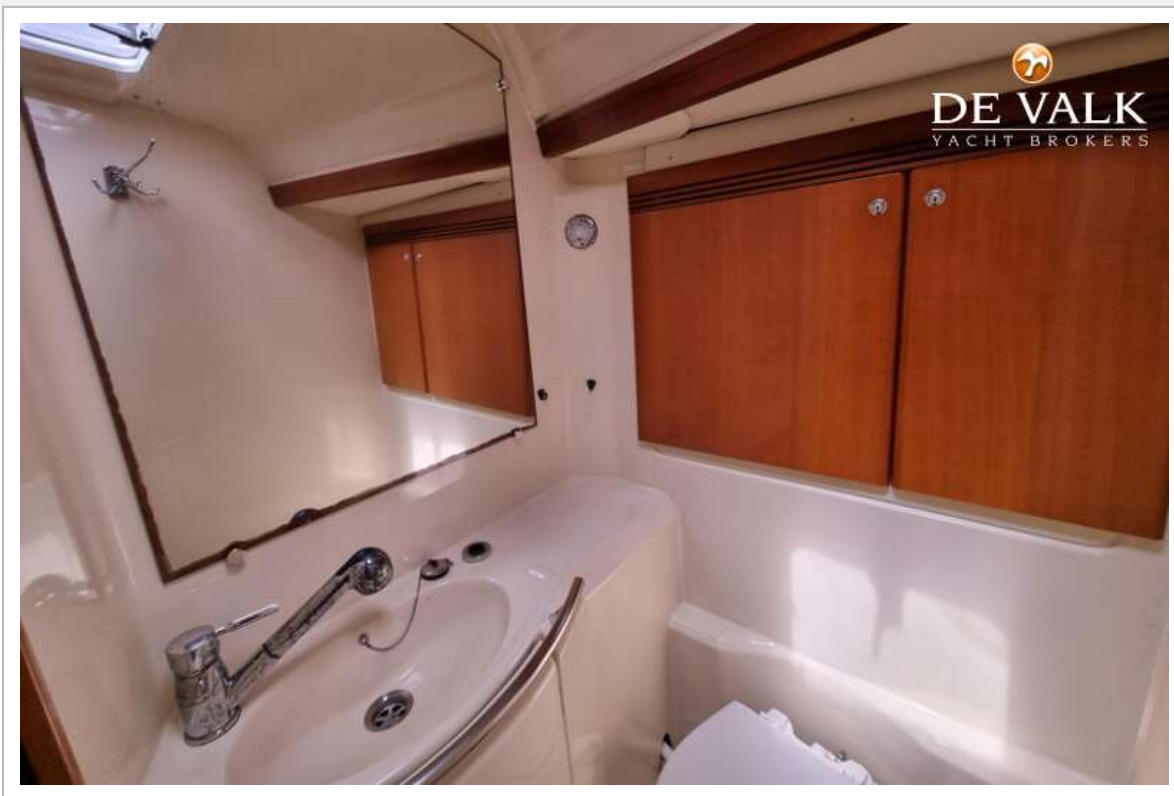


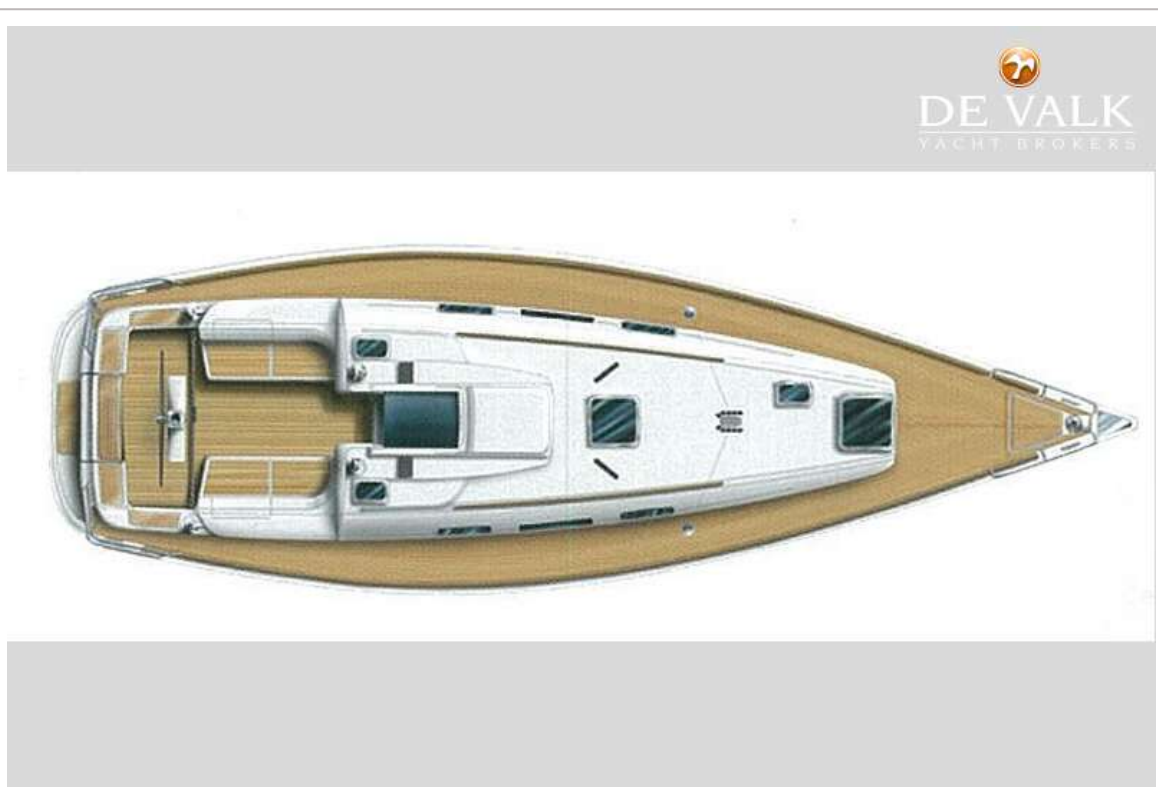
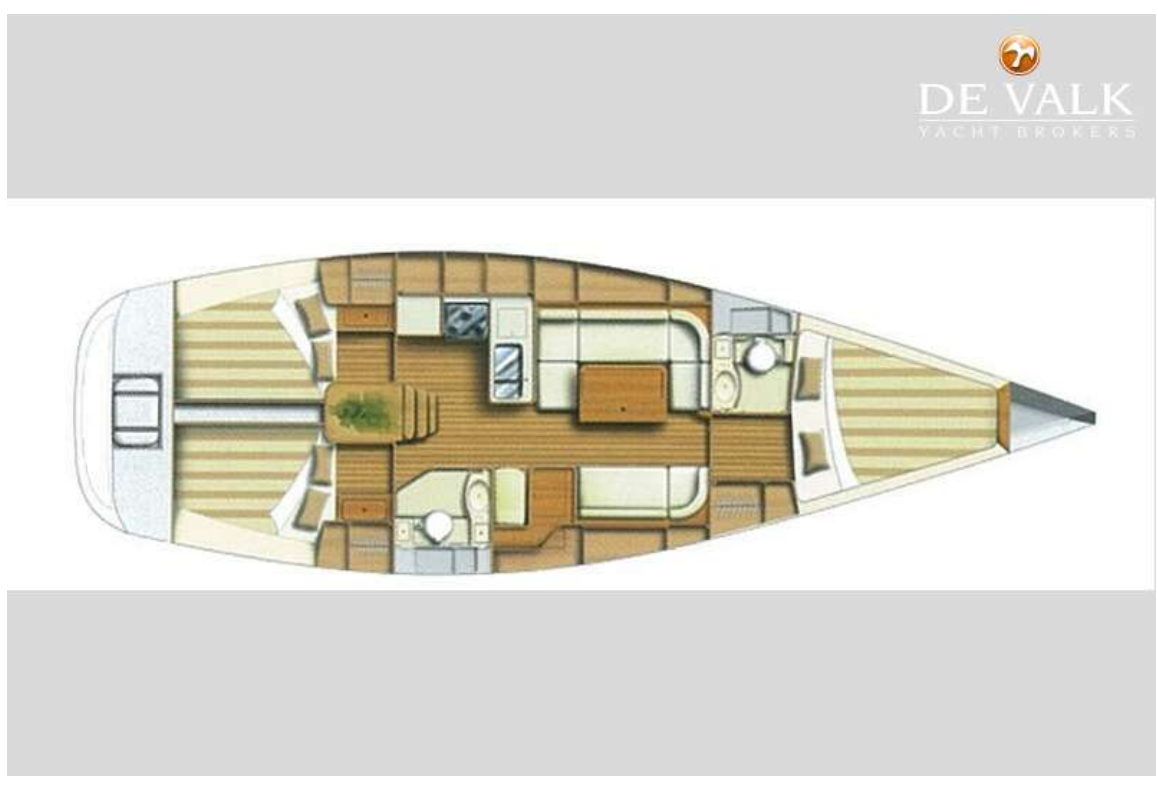


# DUFOUR 40 PERFORMANCE



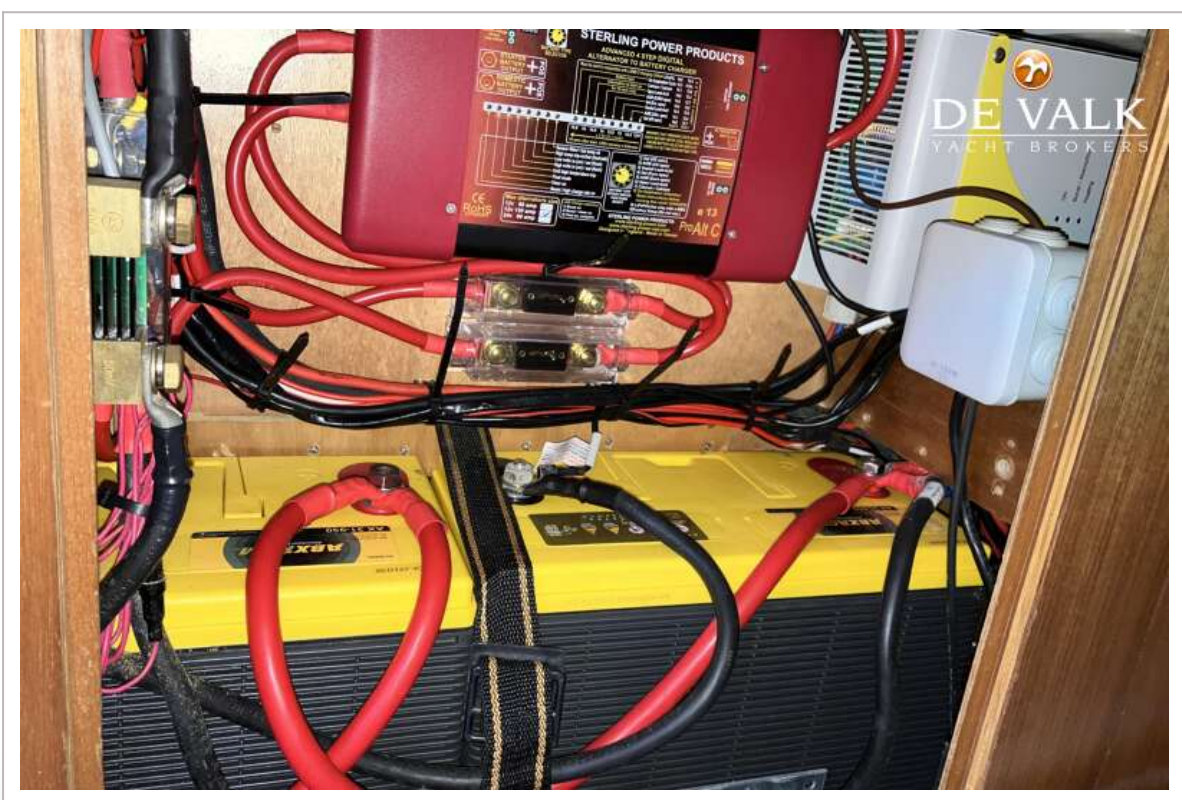
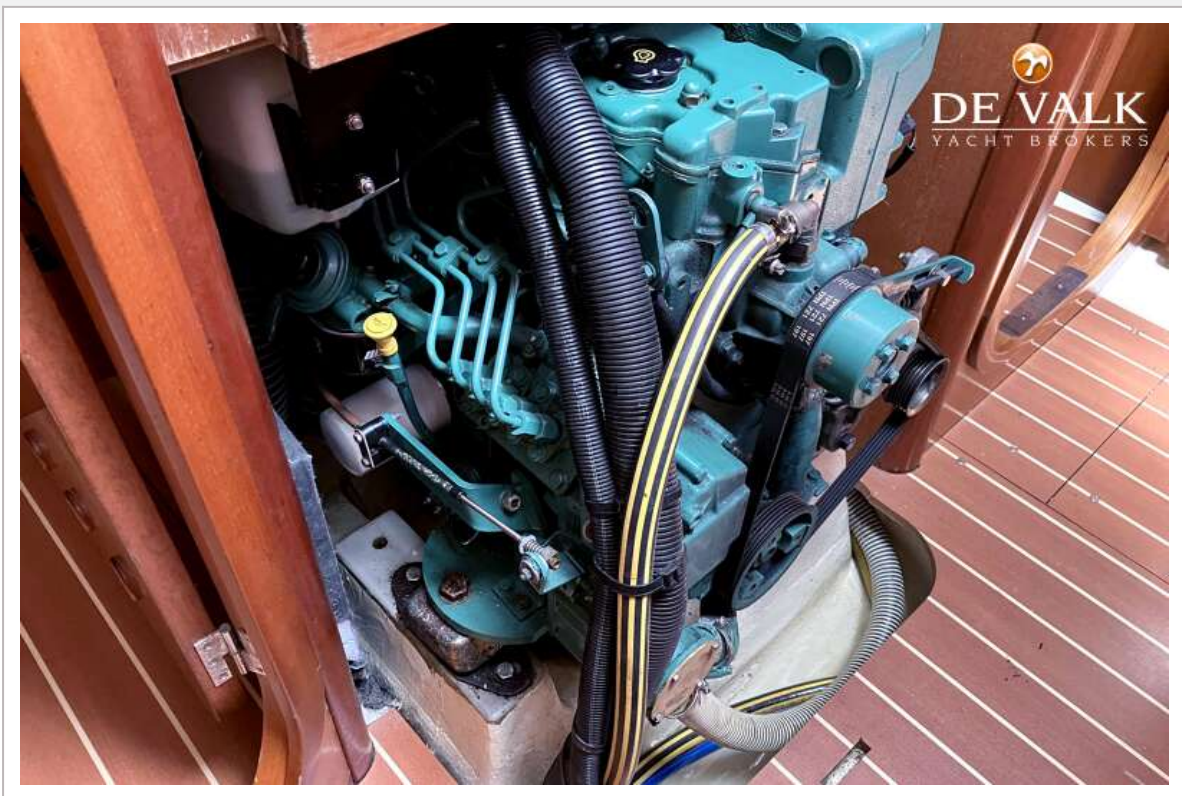
# DUFOUR 40 PERFORMANCE







# DUFOUR 40 PERFORMANCE



# DUFOUR 40 PERFORMANCE

