



HANSE 400

BROKER'S COMMENTS

The Hanse 400 is a stylish performance sailing yacht with luxurious accommodation and all the comforts below deck. The master cabin is located in the front and the 2 guest cabins in the aft, separate bathroom with shower and toilet. This Hanse 400 is a perfect family cruiser with all the comfort you need. This is a well equipped owners version with a recent saildrive (2024) retractable bow thruster, electric halyard winch and windlass, cockpit cover, recent Jib (2022) and Simrad equipment on both steering positions. She is now located at our sales office in Sint Annaland.

Joris van de Rijt

SPECIFICATIONS

Dimensions	12.10 x 4.04 x 2.05 (m)	Builder	Hanse Yachts GmbH
Built	2010	Cabins	3
Material	GRP	Berths	7
Engine(s)	1 x Yanmar 3JH5E diesel	Hp/Kw	39.00 (hp), 28.70 (kw)
Asking price	Under Offer (VAT Paid)	Lying	at sales office

CONTACT

Sales office	De Valk Sint Annaland	Telephone	+31 166 601 000
Address	Koelhuisweg 4 4697 RM Sint Annaland The Netherlands	E-mail	sintannaland@devalk.nl

DISCLAIMER

These particulars are given in good faith as supplied but cannot be guaranteed.



GENERAL

Model	HANSE 400
Type	sailing yacht
LOA (m)	12,10
LWL (m)	10,80
Beam (m)	4,04
Draft (m)	2,05
Air draft (m)	19,52
Headroom (m)	1,95
Year built	2010
Builder	Hanse Yachts GmbH
Country	Germany
Designer	Judel / Vrolijk & Co
Displacement (t)	8,4
Ballast (tonnes)	cast iron and lead 2,68
CE norm	A
Hull material	GRP
Hull colour	blue
Hull shape	round-bilged
Keel type	fin keel with bulb
Superstructure material	GRP
Rubbing strake	stainless steel
Deck material	GRP
Deck finish	teak
Superstructure deck finish	non-skid moulded in
Cockpit deck finish	teak
Antifouling (year)	2024
Window material	perspex
Deckhatch	3 x
Portholes	2 x
Fuel tank (litre)	stainless steel 140



Level indicator (fuel tank)	yes
Freshwater tank (litre)	polyethylene 325
Level indicator (freshwater)	yes
Blackwater tank (litre)	polyethylene
Blackwater tank extraction	deck extraction + uw line
Wheel steering	rack & pinion 2 x Jefa
Emergency tiller	yes

ACCOMMODATION

Cabins	3
Berths	7
Interior	cherry
Floor	woodprint
Saloon	yes
Headroom saloon (m)	1,95
Heating	diesel ducted hot air Eberspacher (with remote control option)
Chart table	yes
Dinette	yes
Galley	yes
Countertop	corian
Sink	stainless steel
Cooker	calor gas 2 burner
Oven	yes
Fridge	Isotherm
Freezer	In fridge
Hot water system	220V + engine
Water pressure system	electrical
Owners cabin	v-bed
Bed length (m)	2,35
Wardrobe	hanging/drawers/shelves
Bathroom	shared



Toilet	shared
Toilet system	manual
Wash basin	in the bathroom
Shower	shared
Guest cabin 1	double bed
Bed length (m)	2,00
Wardrobe	hanging and shelves
Guest cabin 2	double bed
Bed length (m)	2,00
Wardrobe	hanging and shelves

MACHINERY

No of engines	1
Make	Yanmar
Type	3JH5E
HP	39
kW	28.70
Fuel	diesel
Year installed	2010
Engine cooling system	freshwater heat exchanger
Drive	sail-drive
Saildrive seal	2024 together with complete new saildrive
Engine controls	bowden cable
Bowthruster	electric RMC swing thruster foldable
Propeller type	folding
Propeller blades	3
Manual bilge pump	yes
Electric bilge pump	yes
Electrical installation	12V / 220V
Start battery	1 x 70 Ah
Service battery	2 x 165 Ah



Battery monitor	On Hanse panel
Battery charger	Sterling Pro Charge 30
Solar panel	On superstructure
Shorepower	with cable
Extra info	Saildrive new placed 2024

NAVIGATION

Compass	In cockpit
Depth sounder	Simrad IS20
Log	Simrad IS20
Windset	Simrad IS20
VHF	Simrad RS82
Autopilot	Simrad AP24 with remote control
Plotter	Simrad in cockpit
Electronic chart(s)	yes
Navigation lights	yes

EQUIPMENT

Sprayhood	2 x (1x 2010 + 1x 2016)
Cockpit cover	yes
Cockpit cushions	yes
Cockpit table	Fixed + foldable
Boarding ladder	stainless steel
Deck shower	Hot + cold near helmposition
Anchor	Delta
Anchor chain	yes
Windlass	electrical Lewmar
Sea railing	wire
Grab rail (superstructure)	stainless steel
Pushpit	yes
Pulpit	yes



Lifebuoy	Plastimo rescue sling
Fenders	yes
Mooring lines	yes
Radio-cd player	Clarion
Cockpit speakers	yes
Speakers in salon	yes
Clock - barometer	yes
Fire extinguisher	yes

RIGGING

Rigging	fractional
Standing rigging	wire (2010)
Brand mast	Seldén
Material mast	aluminium
Spreaders	2 sets
Mainsail	North Sails (2010)
Mainsail cover	Lazybay
Jib	(2022) on self tacking jib installation, with Furlex furler.
Genoa furler	yes
Self tacking jib installation	yes
Backstay adjuster	tackle
Boomvang	gasspring
Genoa sheetwinches	2 x Lewmar 46ST
Halyard winches	1 x Lewmar 40ST electric + 1 x Lewmar 40ST



HANSE 400



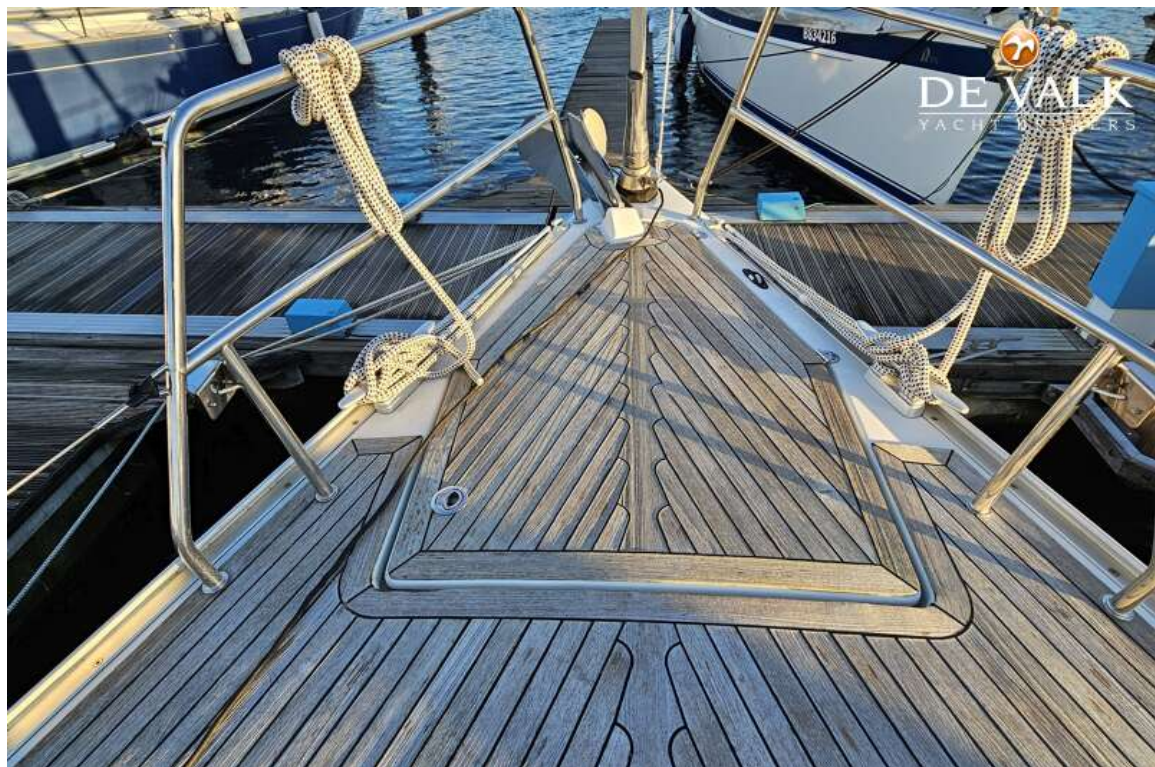
HANSE 400



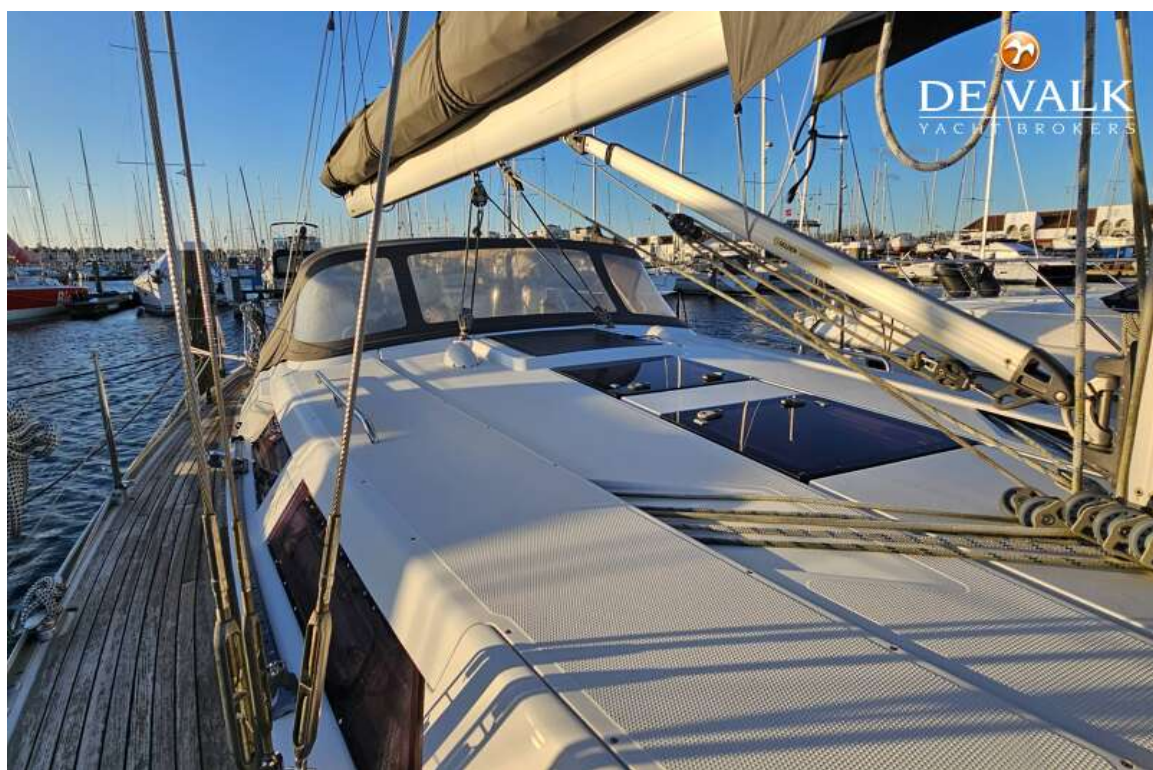
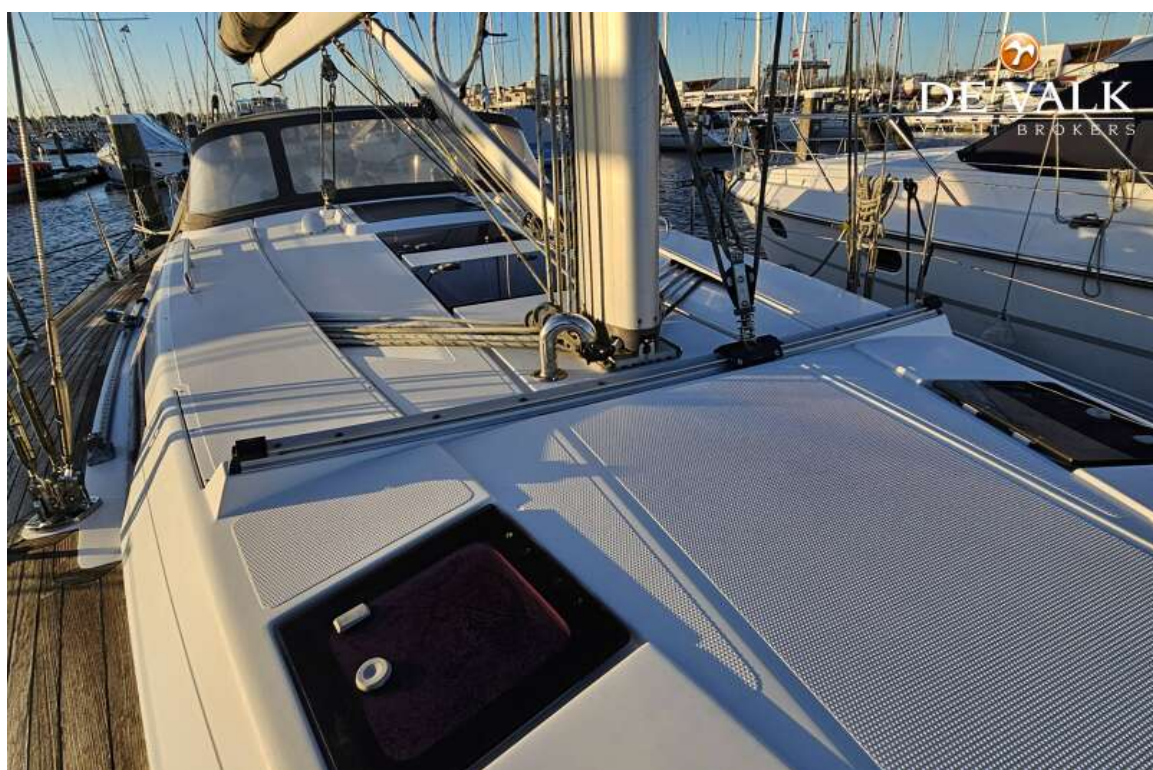
HANSE 400



HANSE 400



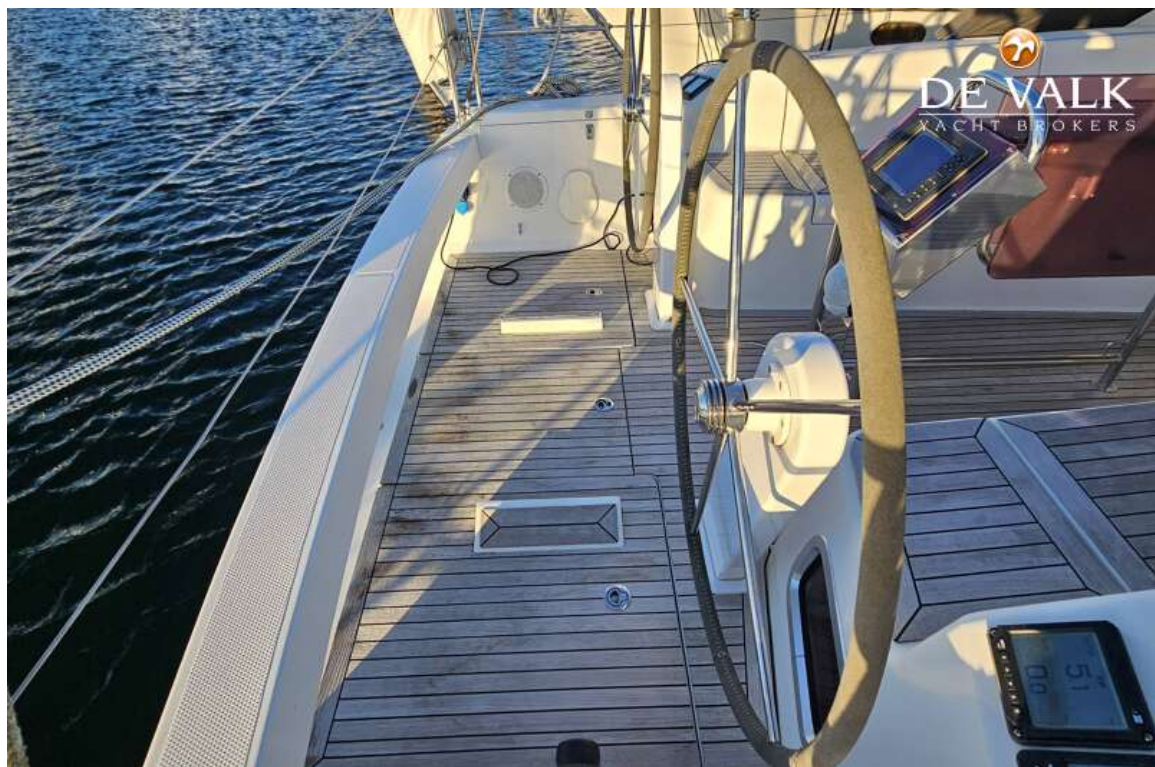
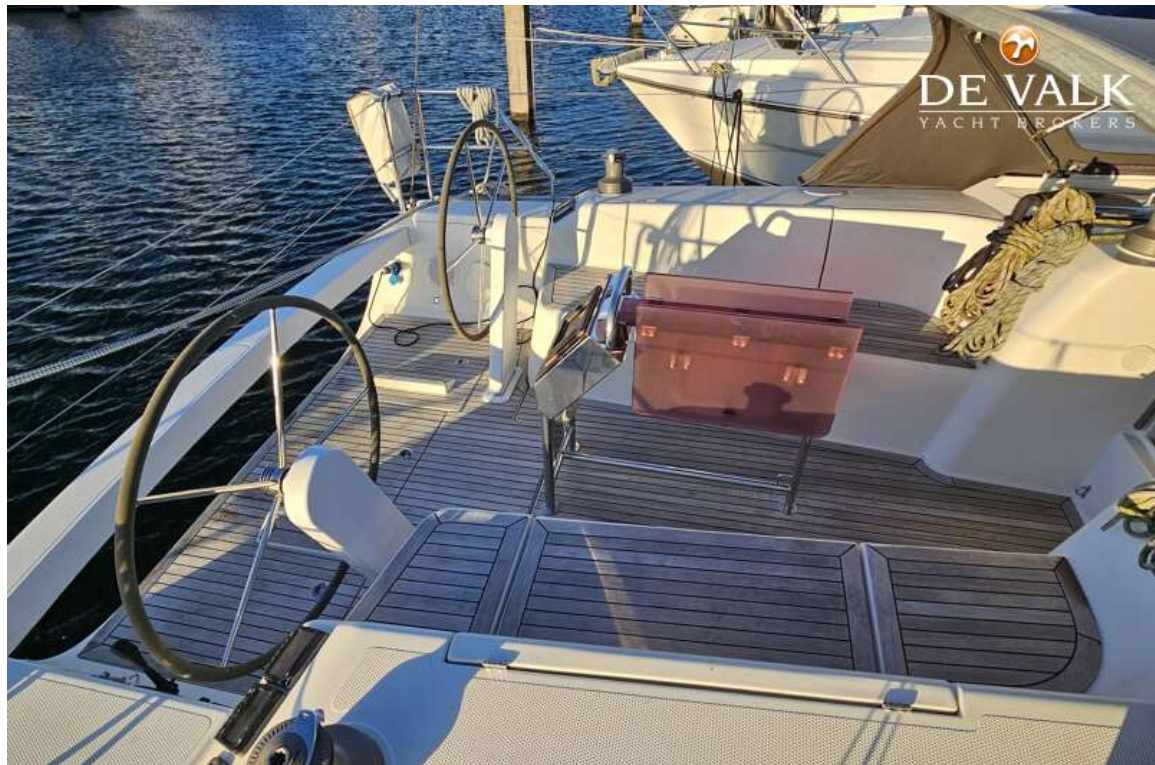
HANSE 400



HANSE 400



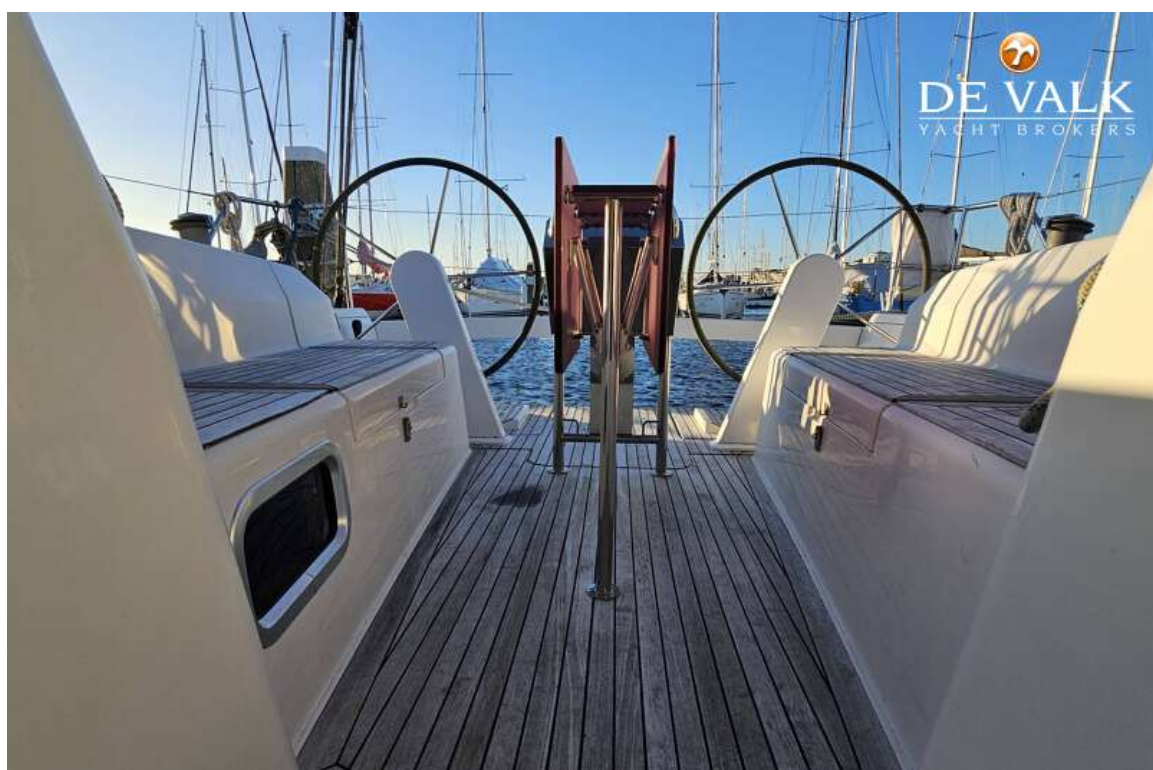
HANSE 400



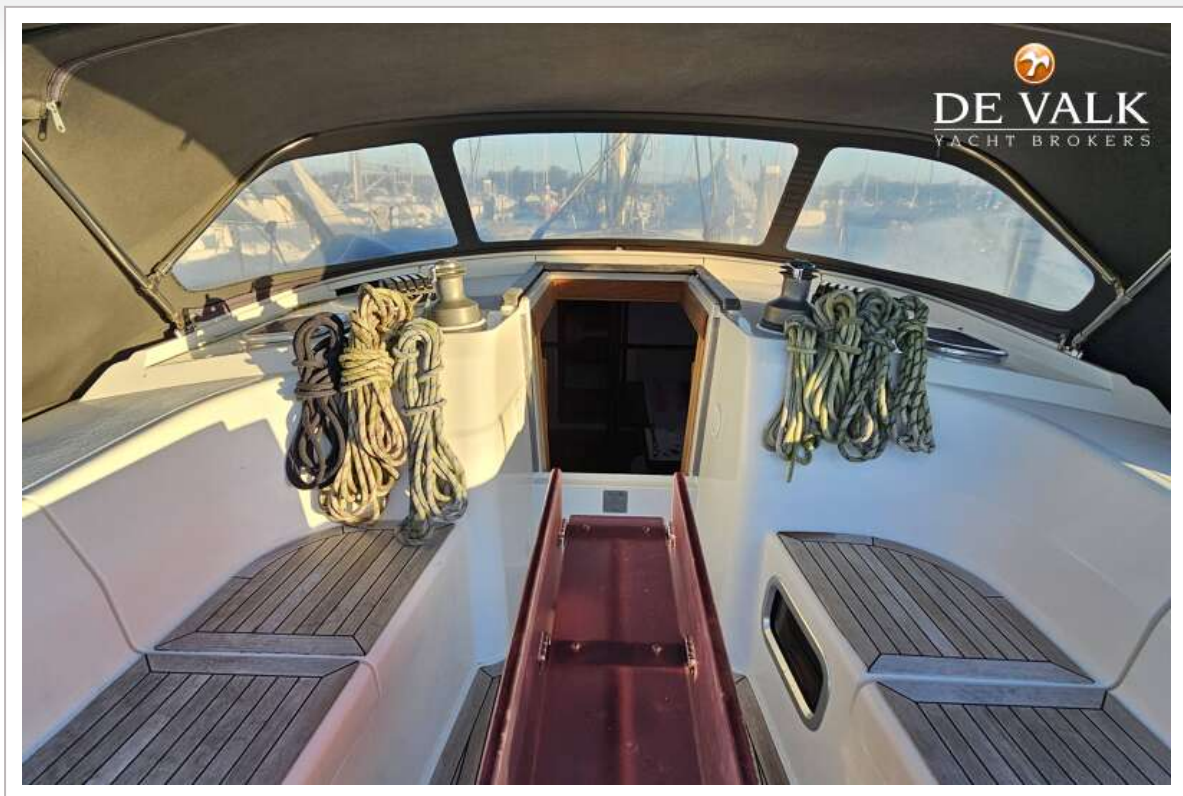
HANSE 400



HANSE 400



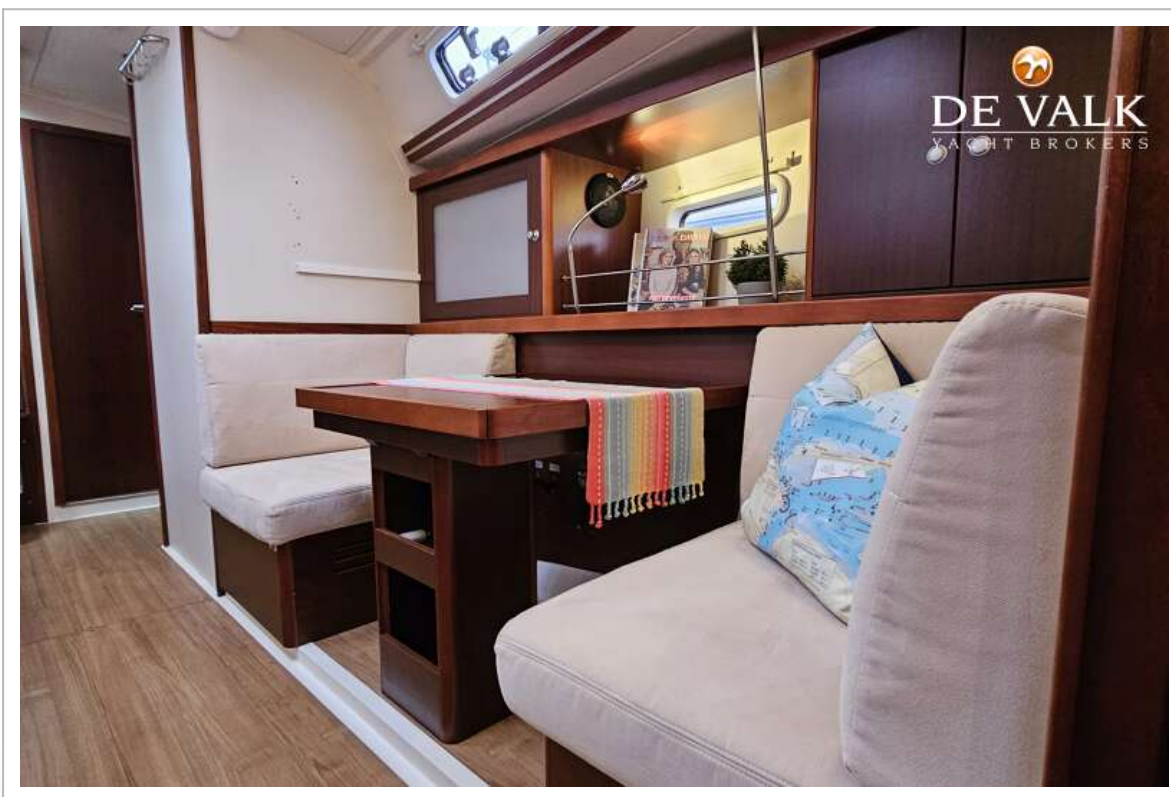
HANSE 400



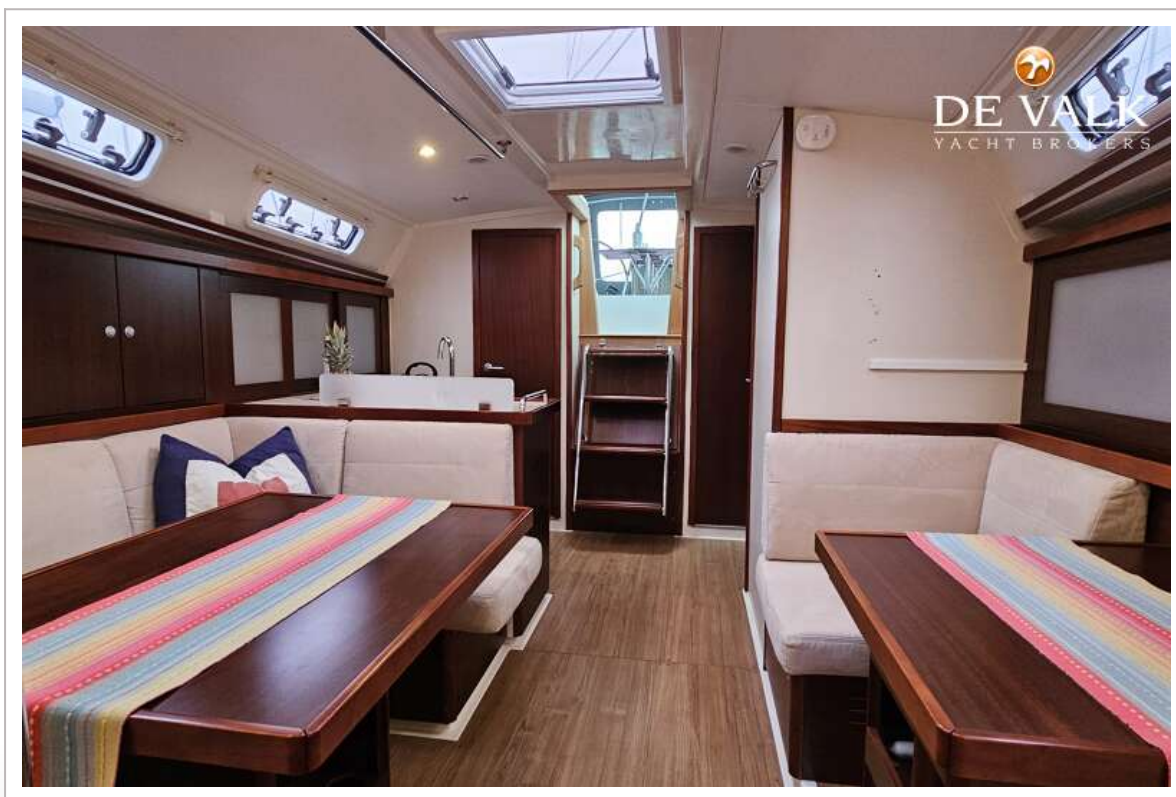
HANSE 400



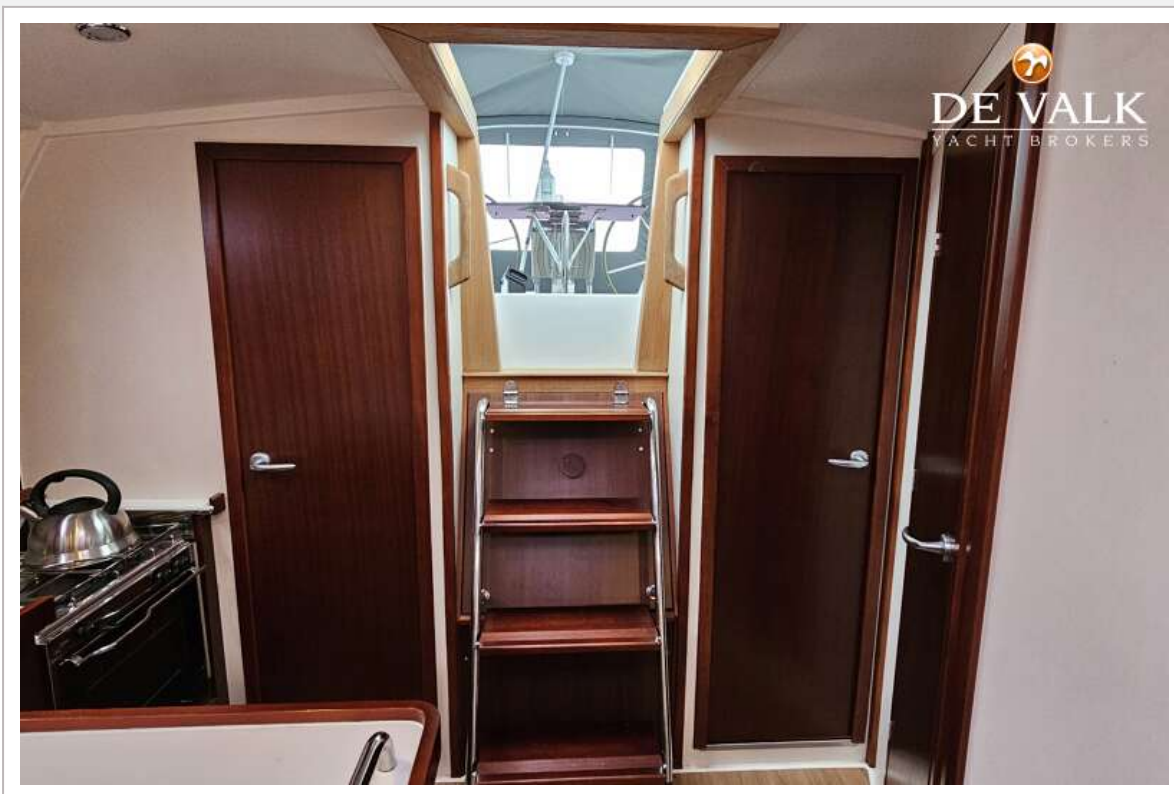
HANSE 400



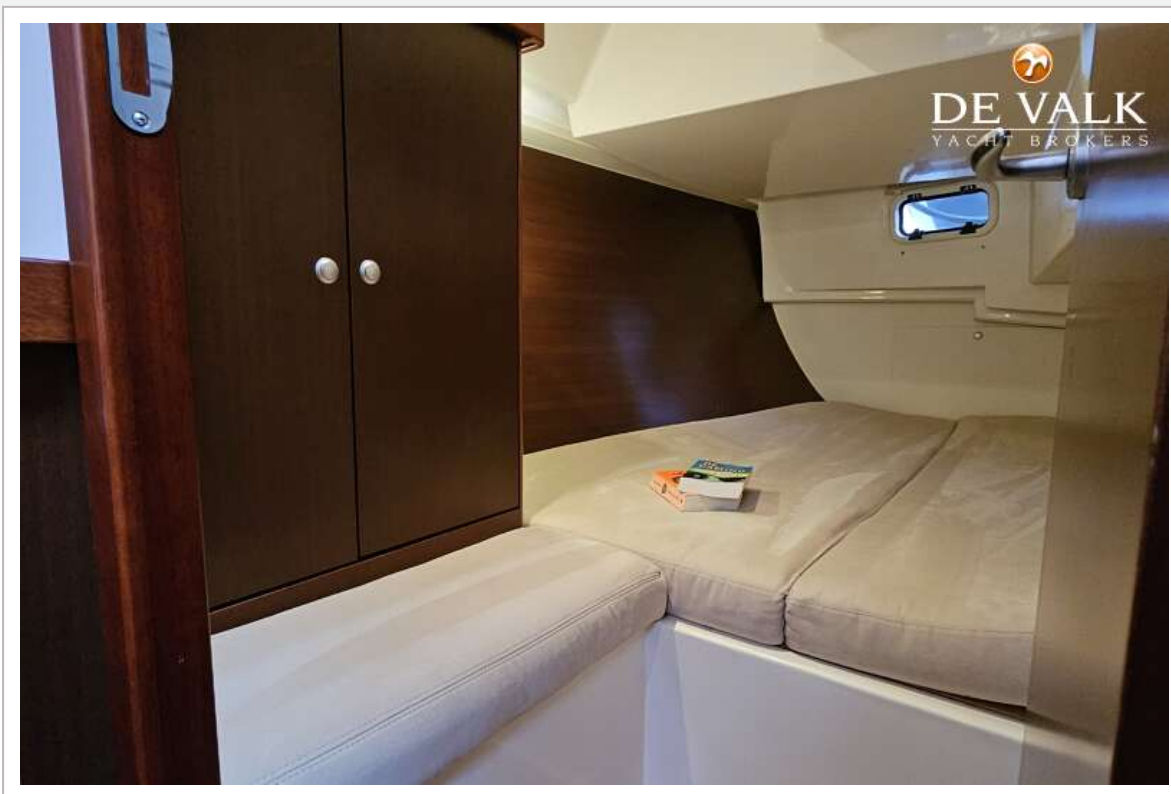
HANSE 400

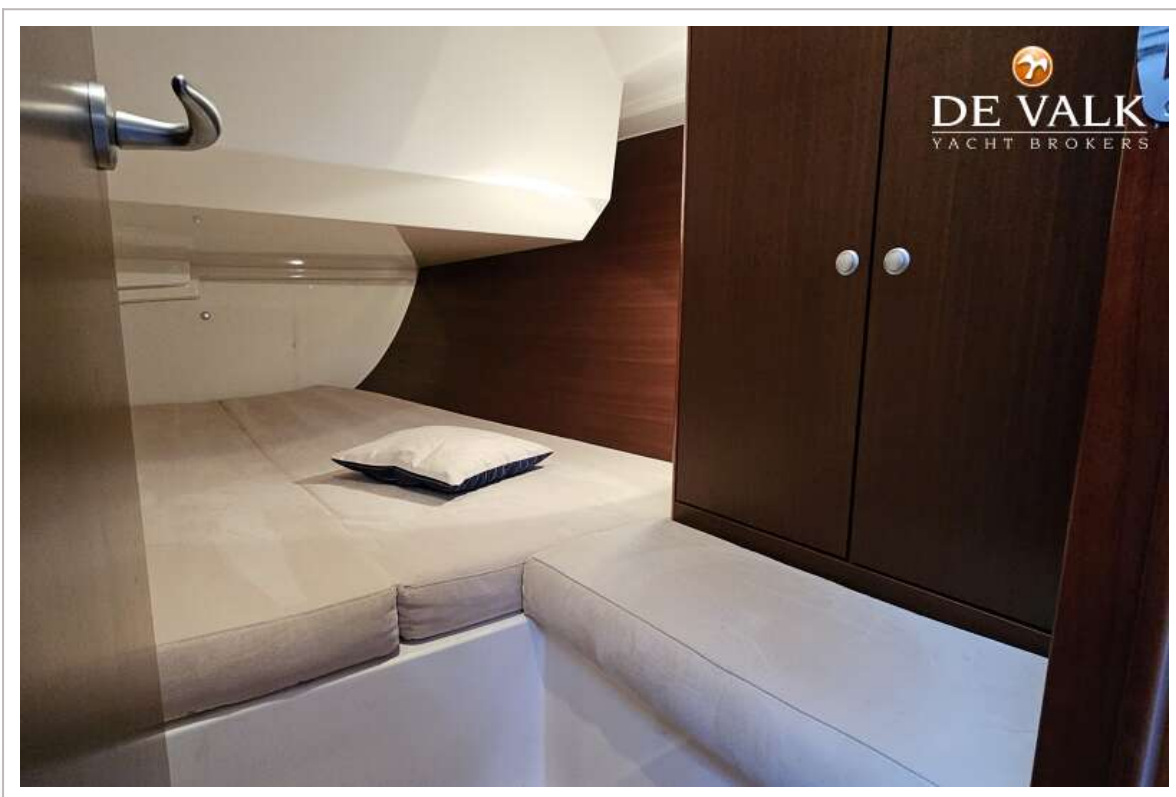
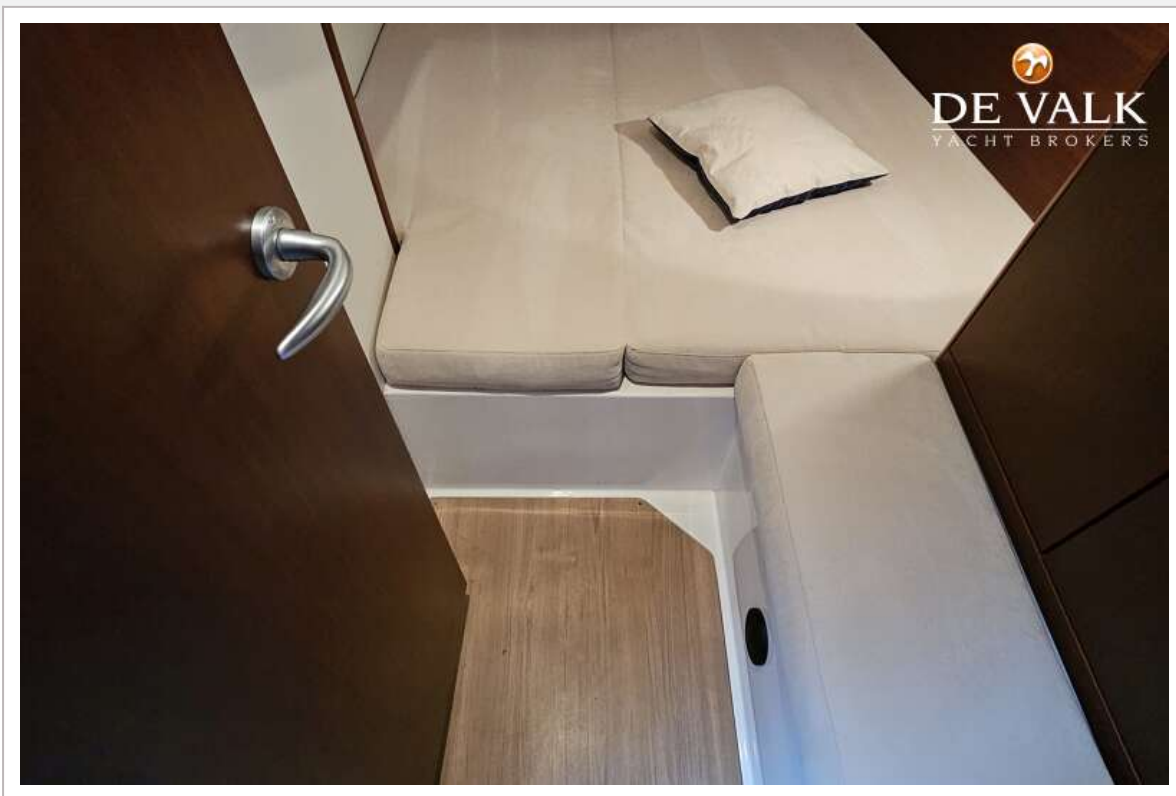


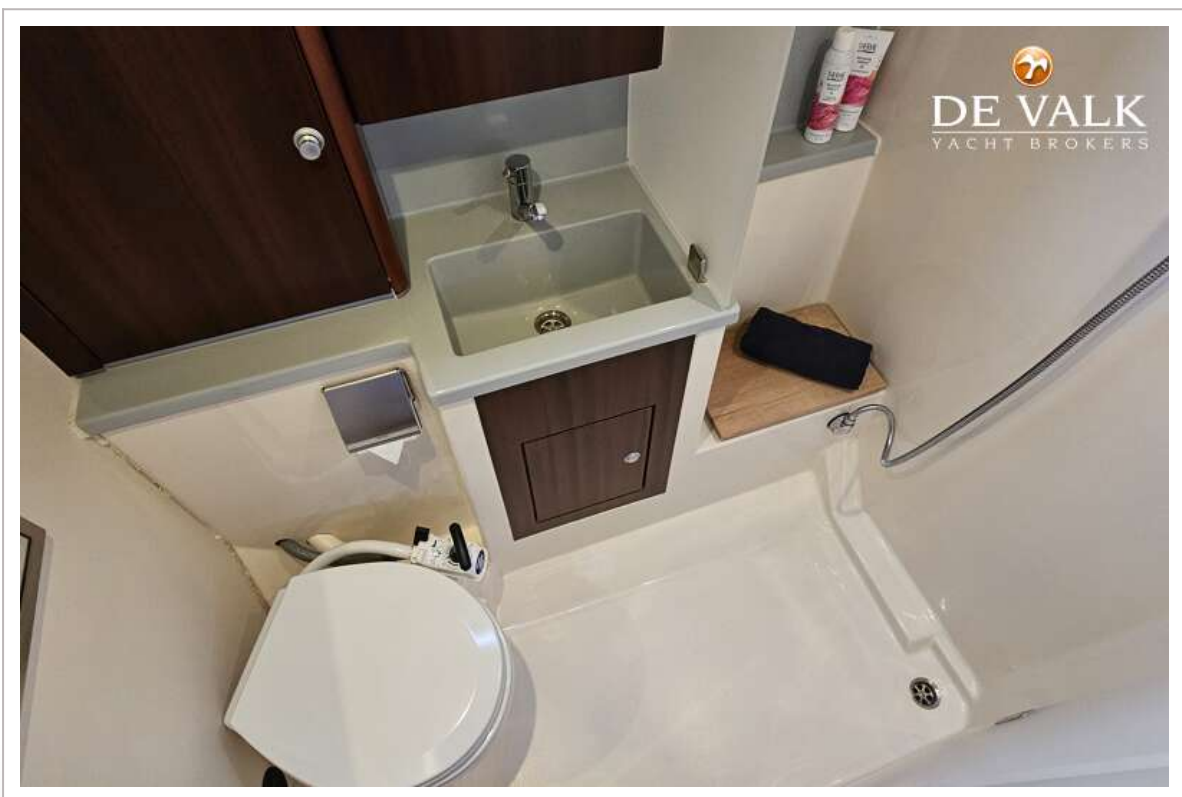
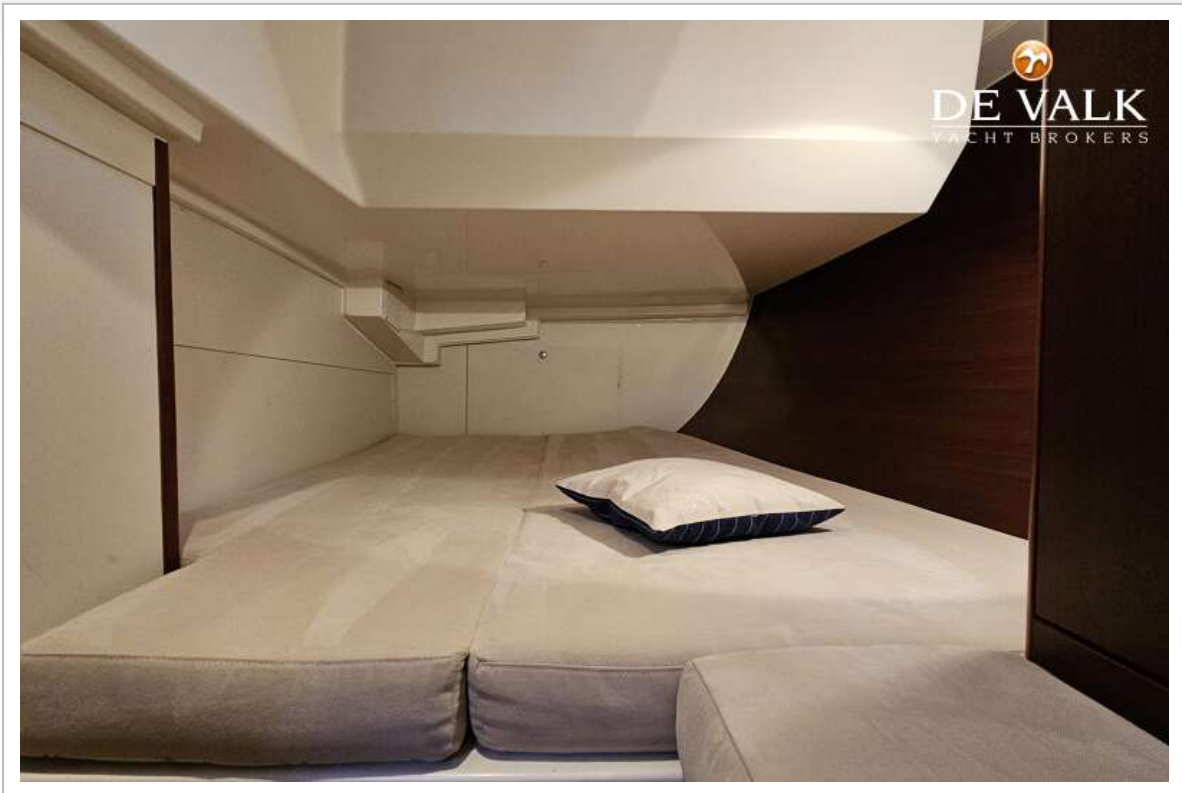
HANSE 400



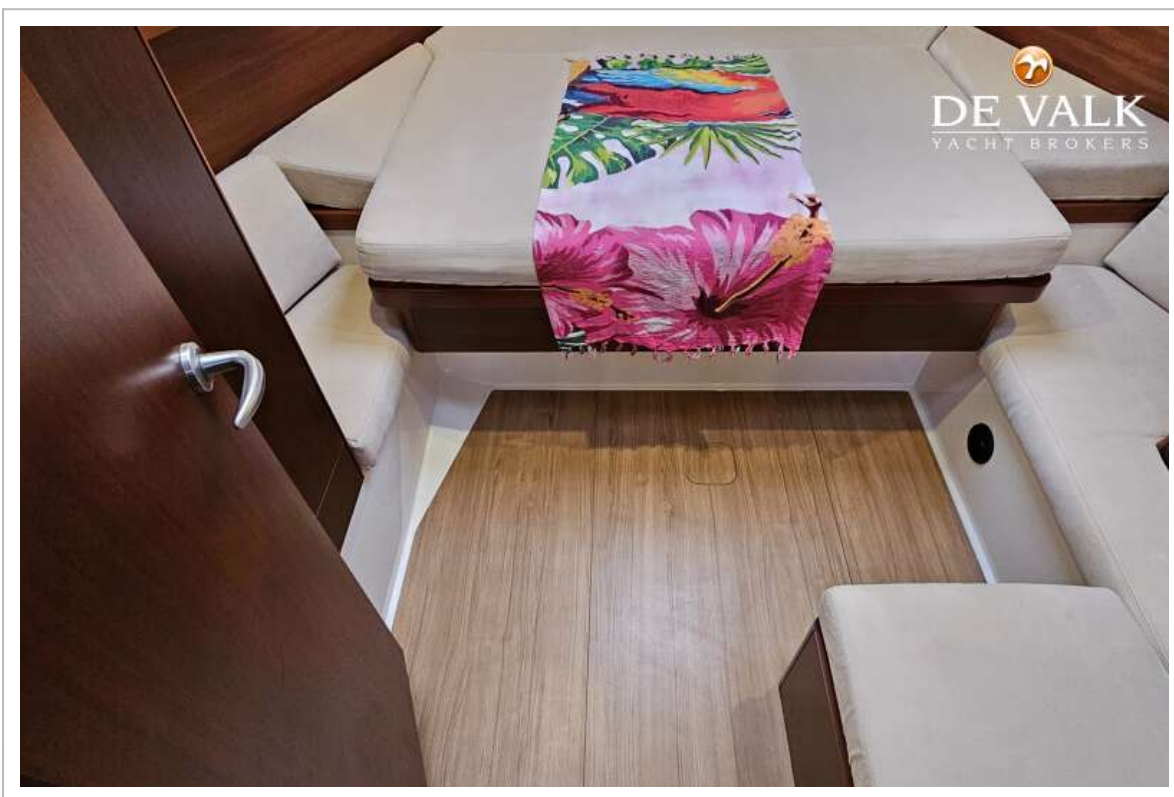
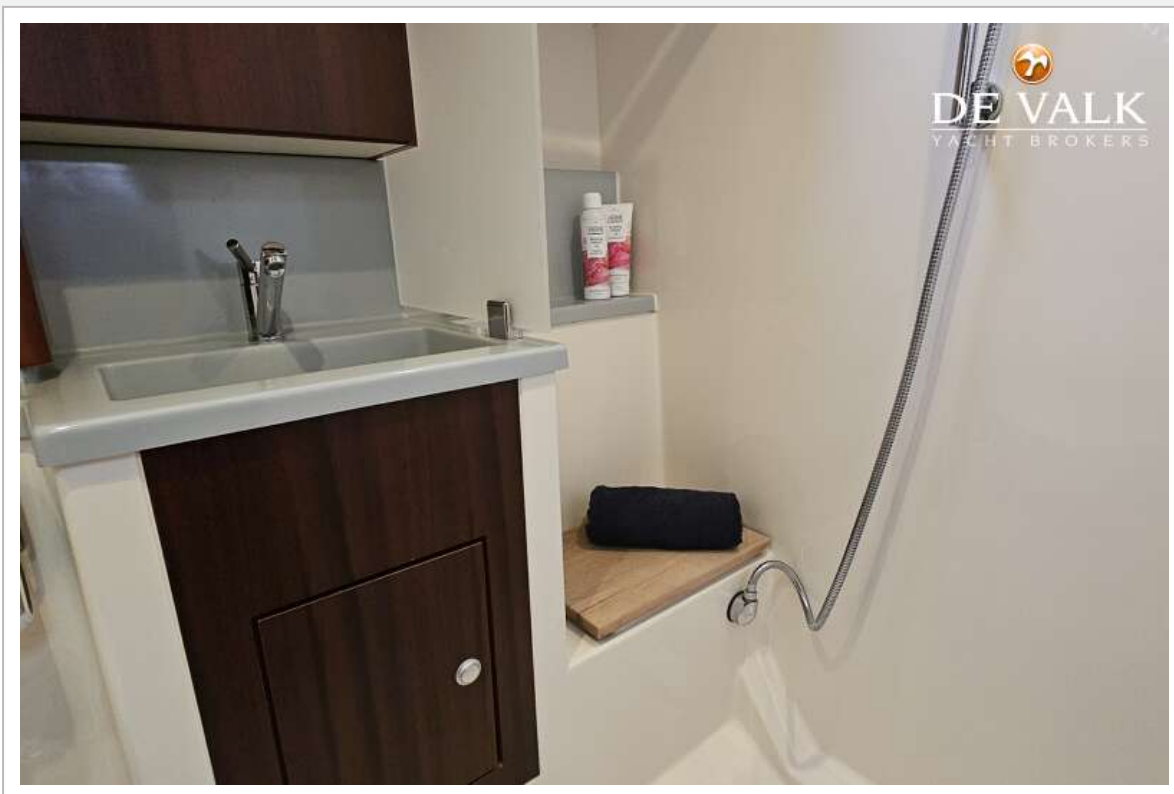
HANSE 400







HANSE 400



HANSE 400



HANSE 400

