



DE VALK  
YACHT BROKERS



LUXE MOTOR DE ALM 20 MTR DECKSALON



DE VALK  
YACHT BROKERS

BROKERAGE | CHARTER | BERTHS | FINANCE | INSURANCE | YACHT MANAGEMENT

# LUXE MOTOR DE ALM 20 MTR DECKSALON

## BROKER'S COMMENTS

Designed and optimized by the yard and her very experienced owner couple, this true live onboard, French Canal ready, classic Luxe Motor 20 mtr by De Alm is now available to explore the European waters. Mind you, she visited London to, so "Rebecca" has more to offer than you may expect. The onboard accommodations and inventory is so suited for living onboard for longer periods. With accommodations you can choose when, where and how many you want to entertain. Prime waterborn real-estate with horizons you can choose! What are your plans for 2021?

*Marc Weijenberg*

## SPECIFICATIONS

<b>Dimensions</b>	19.95 x 4.85 x 1.25 (m)	<b>Builder</b>	Jachtwerf De Alm / Ament
<b>Built</b>	2008	<b>Cabins</b>	3
<b>Material</b>	Steel	<b>Berths</b>	7
<b>Engine(s)</b>	1 x John Deere 6068 TFM50 diesel	<b>Hp/Kw</b>	225.00 (hp), 165.38 (kw)
<b>Asking price</b>	sold (VAT )	<b>Lying</b>	contact Sint Annaland

## CONTACT

<b>Sales office</b>	De Valk Sint Annaland B.V.	<b>Telephone</b>	+31 (0)166 601 000
<b>Address</b>	Koelhuisweg 4 4697 RM Sint Annaland NL	<b>E-mail</b>	sintannaland@devalk.nl

## DISCLAIMER

These particulars are given in good faith as supplied but cannot be guaranteed.



# LUXE MOTOR DE ALM 20 MTR DECKSALON

## GENERAL

Model	LUXE MOTOR DE ALM 20 MTR DECKSALON
Type	motor yacht
LOA (m)	19,95
LWL (m)	19,10
Beam (m)	4,85
Draft (m)	1,25
Air draft (m)	3,45
Headroom (m)	2,04
Year built	2008
Builder	Jachtwerf De Alm / Ament
Country	The Netherlands
Designer	Euroships / owner
Displacement (t)	55
Ballast (tonnes)	10
CE norm	B
Hull material	steel
Hull colour	black
Hull thickness (mm)	From 15 to 5 mm
Hull shape	multi hard chine
Superstructure material	steel
Superstructure (mm)	5
Deck plate thickness (mm)	5
Rubbing strake	stainless steel
Deck material	steel
Deck finish	non-skid paint
Cockpit deck finish	teak 25mm (teak on marine ply)
Antifouling (year)	2021
Window frame	aluminium Hora
Window material	double glazing
Deckhatch	lots of natural and mechanical ventilation



# LUXE MOTOR DE ALM 20 MTR DECKSALON

<b>Portholes</b>	brass
<b>Insulation</b>	rockwool
<b>Mast can be lowered</b>	manual
<b>Fuel tank (litre)</b>	steel 2 x 2000 (with inspection lids)
<b>Fuel tank 2 (litre)</b>	steel 1 x 1800 (with inspection lids)
<b>Level indicator (fuel tank)</b>	yes
<b>Freshwater tank (litre)</b>	steel 2 x 2250 (cement coated with inspection lids)
<b>Level indicator (freshwater)</b>	yes
<b>Blackwater tank (litre)</b>	steel 1 x 2000 (Hempel coated with inspection lids)
<b>Level indicator (blackwater)</b>	yes
<b>Blackwater tank extraction</b>	deck extraction + uw line (black and grey water combined)
<b>Wheel steering</b>	hydraulic DMP
<b>Outside helm position</b>	electric
<b>Emergency tiller</b>	yes
<b>More info on paintwork</b>	Hempel / De IJssel (2comp system)
<b>Extra info</b>	- heavy duty hull with 50cm frames, 2 watertight bulkheads and steel bulwarks. - stainless steel fitted in hawspipes, bumperstrip and fairleads.
<b>Extra info</b>	- fully CE class B and CVO (incl. Rhine) certificated. - very suited for the French Canals - her berth in Rotterdam may be available.
<b>Extra info</b>	- spudpoles fore and aft (forward 6,20mtr below draft / aft 1,50mtr below draft) for easy and effortless mooring

## ACCOMMODATION

<b>Cabins</b>	3
<b>Berths</b>	7
<b>Interior</b>	mahogany
<b>Floor</b>	woodprint Drumakon
<b>Aft deck</b>	full beam with settee and table
<b>Pilot house/deck saloon</b>	with 360 degree view of the surroundings
<b>Saloon</b>	upper salon with u-shaped dinete and fold-open dinner table



# LUXE MOTOR DE ALM 20 MTR DECKSALON

Headroom saloon (m)	2,04
Heating	central heating Kabola 29kW (220v system, serviced 2021)
Heating 2	floor heating (220v)
Dinette	upper and lower settees done in leather upholstery
Opening door to aft deck	+ twin opening doors to sidedecks
Galley	yes
Countertop	corian
Sink	stainless steel
Cooker	ceramic 4 burner (220v)
Microwave/oven combi	(220v)
Fridge	158 ltr + 137 ltrs 2 x Liebherr (1 x freezer compartment)
Hot water system	on central heating
Water pressure system	electrical Speck (220v)
Dishwasher	Miele
Crockery	yes
Owners cabin	double bed
Bed length (m)	2,00 x 1,60
Wardrobe	hanging/drawers/shelves
Bathroom	en suite I, with floor heating
Toilet	en suite
Toilet system	electric Altena
Wash basin	in the bathroom
Shower	en suite
Extra info	all onboard electric toilets flush with fresh water
Guest cabin 1	double bed
Bed length (m)	2,00 mtr headroom 2,20 x 1,40
Wardrobe	hanging and drawers
Bathroom	shared II, with floor heating
Toilet	shared
Toilet system	electric Altena
Wash basin	in the bathroom
Shower	shared



# LUXE MOTOR DE ALM 20 MTR DECKSALON

Extra info	guestcabins have deckhatches and portholes.
Guest cabin 2	double bed + single bed
Bed length (m)	2,00 mtr headroom 2,20 x 1,40 (single bed 1,90)
Wardrobe	hanging and shelves
Washing machine	Miele
Dryer	Miele
Extra info	- 85(!) m2 of livingspace with upper and lowerdeck salons. - Divided by secure bolt-down hatch if needed. - floorheating (220v) in all cabins, bathroom and lower salon
Extra info	- extra utility-storage -room below for supplies and washing-room

## MACHINERY

No of engines	1
Make	John Deere
Type	6068 TFM50
HP	225
kW	165,38
Fuel	diesel
Year installed	2008
Maximum speed (kn)	9
Cruising speed (kn)	6,5
Consumption (l/hr)	6
Range (nm)	4000
Engine hours	2400
Engine cooling system	closed keelcooling
Drive	shaft
Engine controls	electrical Morse
Gearbox	hydraulic Twindisc
Bowthruster	hydraulic Hydrosta 15hp
Sternthruster	hydraulic Hydrosta 15hp
Exhaust	Dry type with extra silencer



# LUXE MOTOR DE ALM 20 MTR DECKSALON

Thrust bearing	Amartech
Propeller type	fixed Amartech 4 bladed
Propeller shaft material	stainless steel
Shaft lubrication	water
Manual bilge pump	yes
Electric bilge pump	2 x 24v heavy duty pumps, with manifold for all compartments.
Bilge alarm	for bilges, engine and genset
Electrical installation	12/24/220v/380v
Generator	silent separator Beta Marine 12kva in sound proofing box
Running hours generator	3300
Start battery	2 x 12v (2020) + 8amp Victron charger
Service battery	12 x gel/720amp (2020)
Generator battery	1 x 12v (2020) + 10amp Victron charger
Battery monitor	yes
Battery charger	Victron 24v/100amp
Battery charger/inverter	3 x Victron 24v/3000watt/70amp
Solar panel	2 x 3 panel groups with Victron regulators 6 x 320wp
Shorepower	with cable
Insulation transformer	Victron 3600i
Watermaker	Enwa 3200 (380v) 3200 ltr/24hr (serviced 2021)
Extra info	- daily acces engine room via cockpit-ladder, full access via cockpit floor hatch
Extra info	- twin Racor fuel filter system - 1 x 28v Alternator and extra 220v/5kva alternator on main engine
Extra info	- gearbox with trawling valve (for slow cruising up to 1000rpm - automatic shorepower-inverter-generator change-over system

## NAVIGATION

Electric compass	Radio Holland fluxgate
Depth sounder	Radio Holland Eco 120
VHF	Sailor RT5020 (+GMDSS)
Rudder angle indicator	on both helmstations Radio Holland



# LUXE MOTOR DE ALM 20 MTR DECKSALON

<b>Radar</b>	Furuno 24nm Navnet VX2
<b>GPS</b>	interfaced with autopilot Furuno
<b>Plotter</b>	Furuno Navnet VX2
<b>Navtex</b>	Furuno NX300
<b>Electronic chart(s)</b>	for Europe inland waterways Sea Map
<b>AIS transponder</b>	Class-A (2017)
<b>Navigation lights</b>	yes
<b>Searchlight</b>	yes

## EQUIPMENT

<b>Cockpit cover</b>	side panels can be taken off.
<b>Cockpit cushions</b>	yes
<b>Cockpit table</b>	yes
<b>Cockpit chairs</b>	yes
<b>Boarding ladder</b>	aluminum
<b>Anchor</b>	2 x Pool (70kg each)
<b>Anchor chain</b>	2 x 33 mtr (galvanized steel)
<b>Windlass</b>	manual Strikwerda Classic with double sheeves.
<b>Deck wash</b>	yes
<b>Dinghy</b>	inflatable Trident 3 mtr (2017)
<b>Outboard</b>	Suzuki 6hp 4-stroke (2017)
<b>Davits</b>	1 x
<b>Davits controls</b>	manual
<b>Sea railing</b>	
<b>Railing side opening gates</b>	2 x
<b>Lifejackets</b>	2 x auto, 2 x conventional
<b>Lifebuoy</b>	2 x
<b>Wiper</b>	3 x
<b>Horn</b>	air pressure
<b>Fenders</b>	yes
<b>Mooring lines</b>	yes





# LUXE MOTOR DE ALM 20 MTR DECKSALON

Spare parts	yes
TV	1 x on lift in upper salon, 1 x in lower salon
Radio-cd player	2 x
Speakers in salon	yes
Clock - barometer	yes
Fire extinguisher	(2021 surveyed)
Extinguisher in engine room	CO2 system
Extra info	smoke detectors and fire fight pump with hose
Extra info	all major service for 2021 has been done or is on progress
Extra info	some artwork and one barometer is not included in the inventory



# LUXE MOTOR DE ALM 20 MTR DECKSALON



# LUXE MOTOR DE ALM 20 MTR DECKSALON

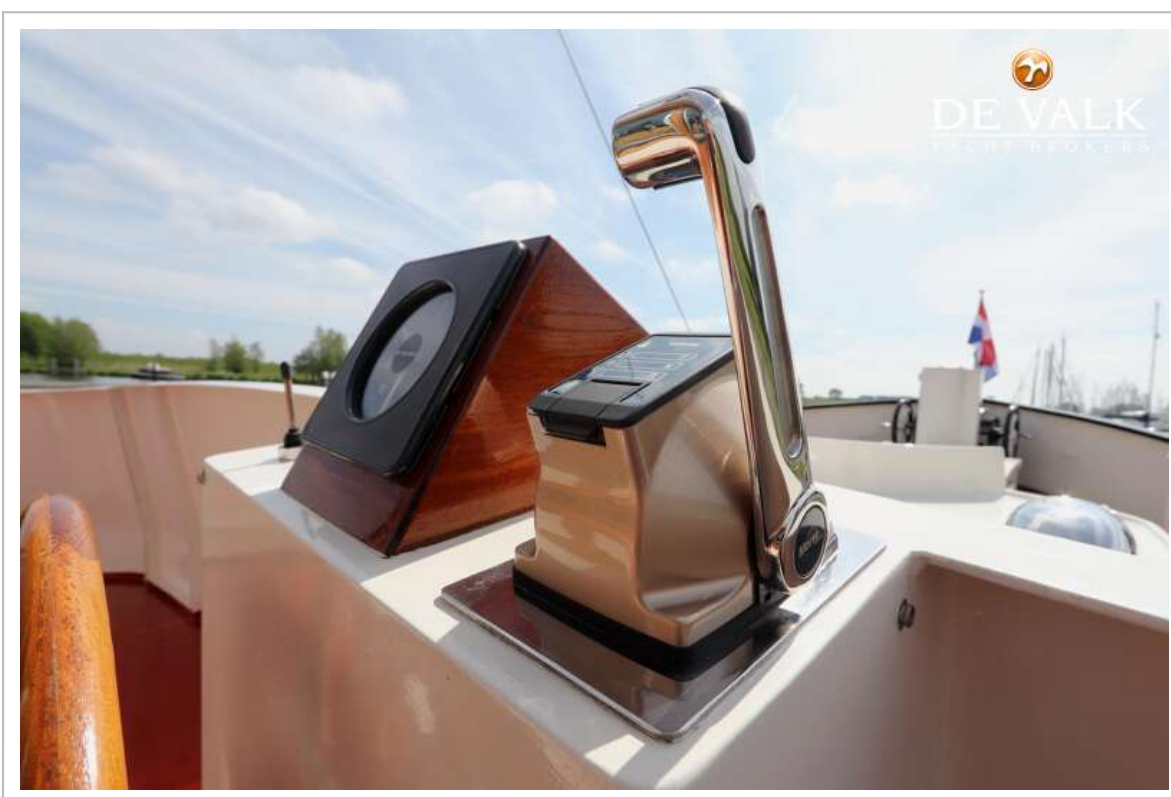




# LUXE MOTOR DE ALM 20 MTR DECKSALON



# LUXE MOTOR DE ALM 20 MTR DECKSALON





# LUXE MOTOR DE ALM 20 MTR DECKSALON



# LUXE MOTOR DE ALM 20 MTR DECKSALON



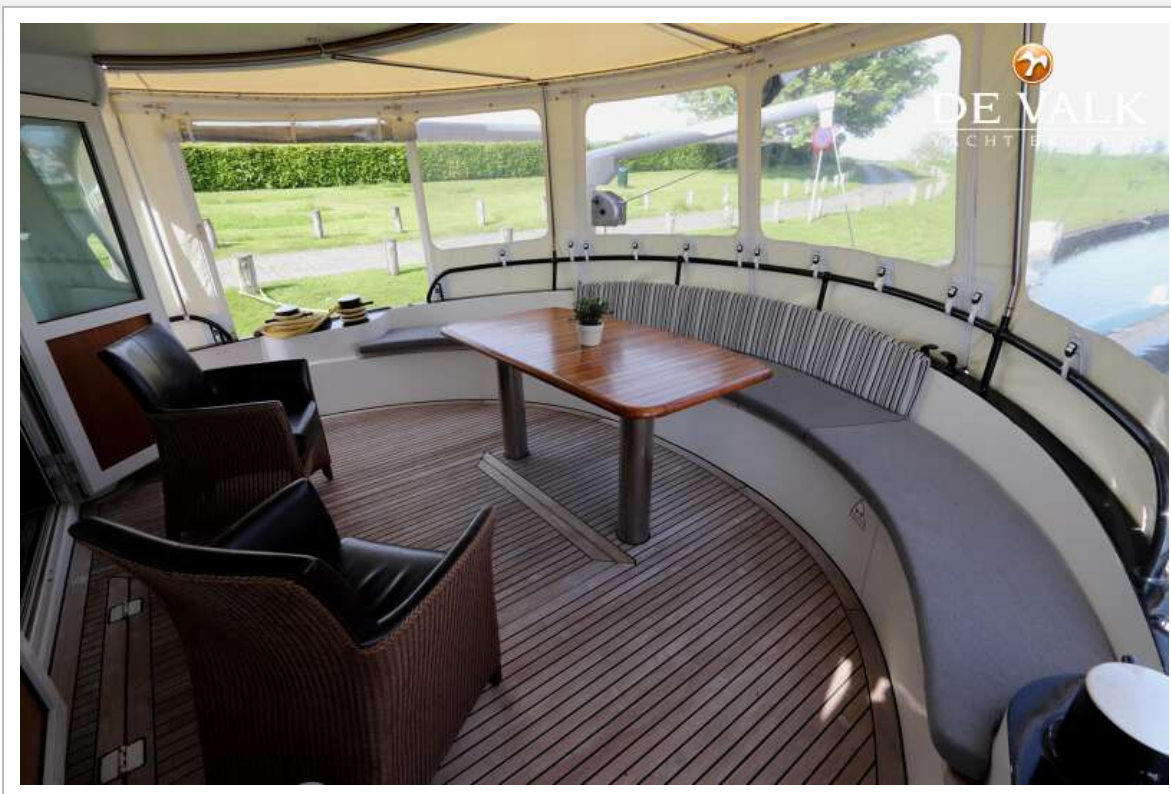


# LUXE MOTOR DE ALM 20 MTR DECKSALON





# LUXE MOTOR DE ALM 20 MTR DECKSALON



# LUXE MOTOR DE ALM 20 MTR DECKSALON

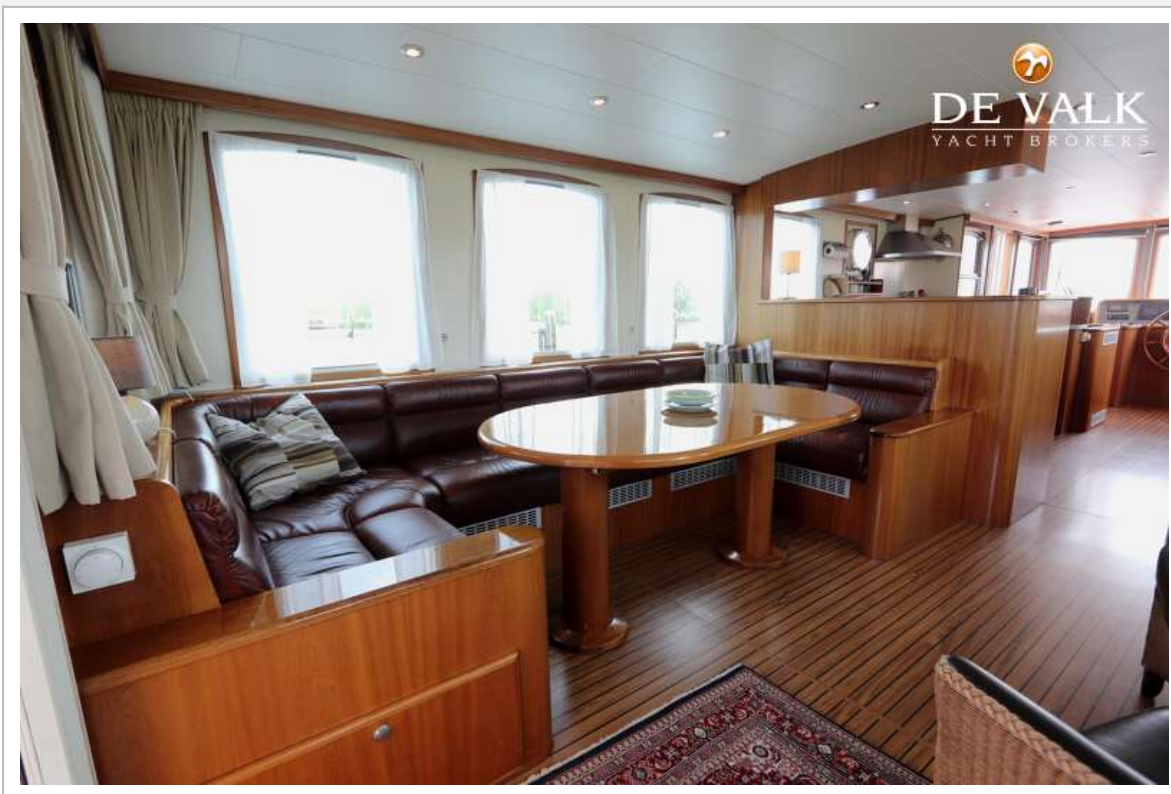




# LUXE MOTOR DE ALM 20 MTR DECKSALON



# LUXE MOTOR DE ALM 20 MTR DECKSALON

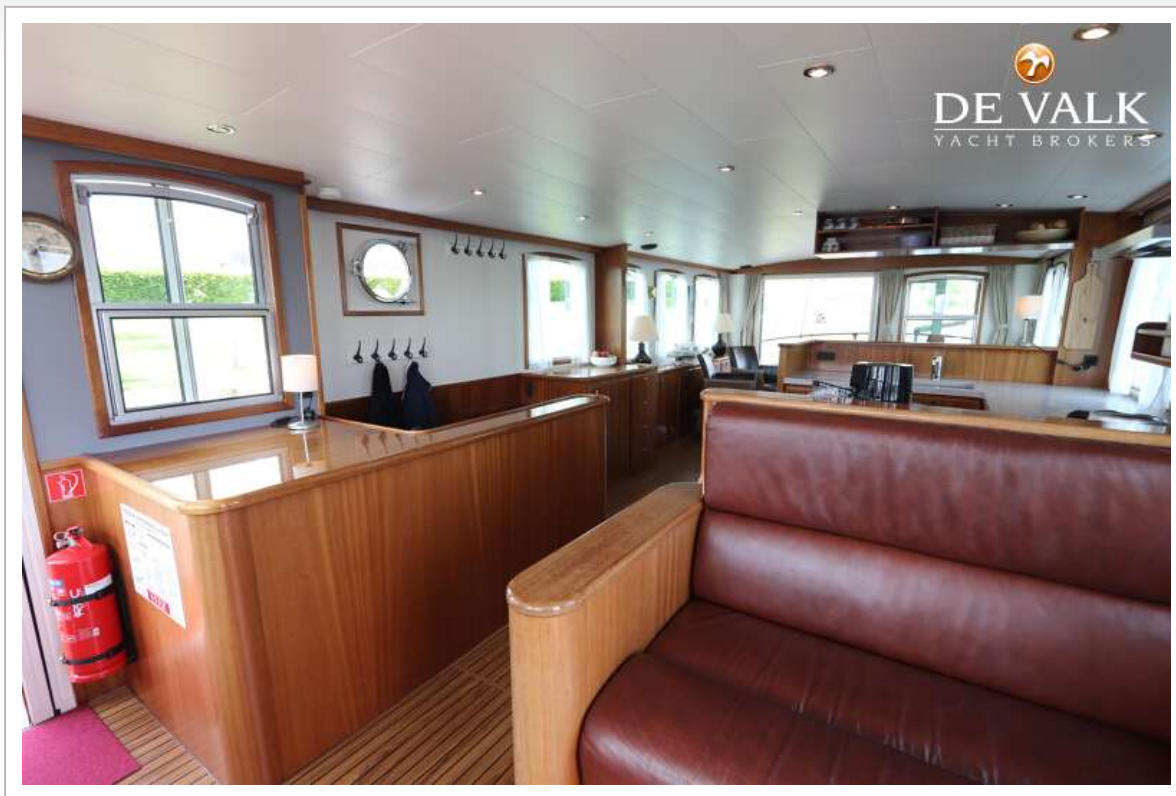




# LUXE MOTOR DE ALM 20 MTR DECKSALON



# LUXE MOTOR DE ALM 20 MTR DECKSALON

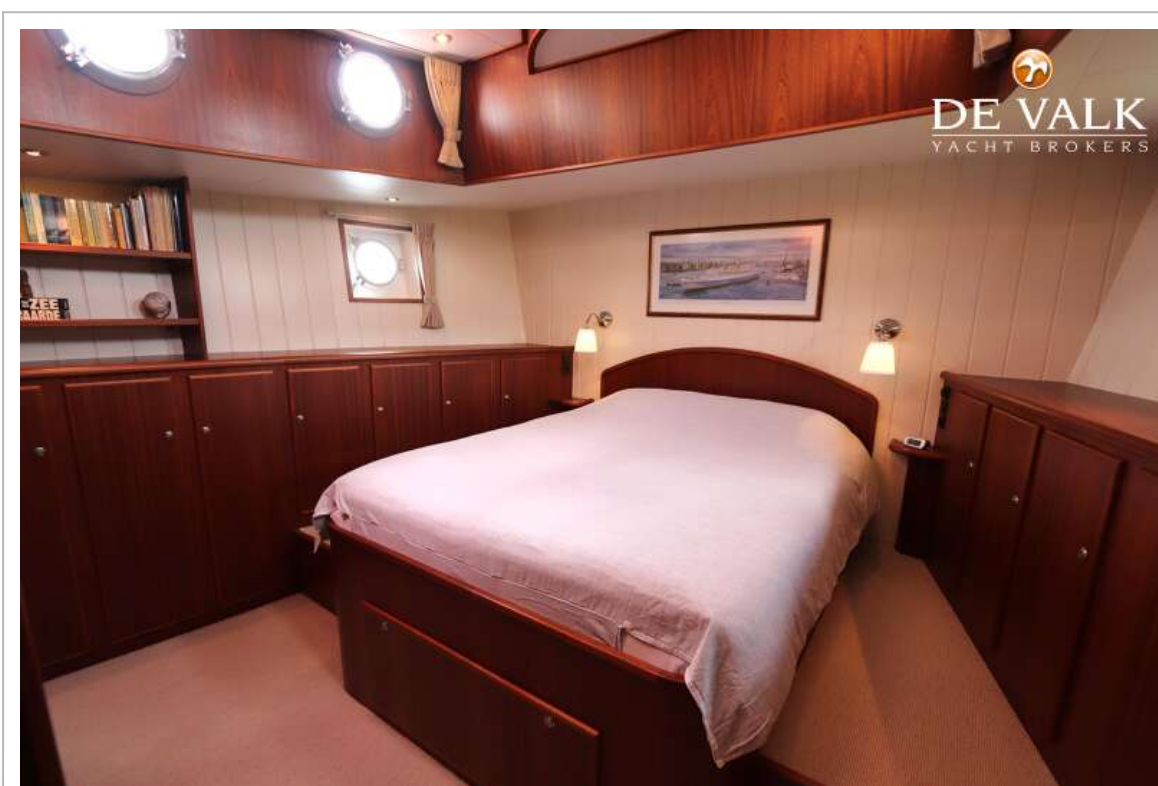




# LUXE MOTOR DE ALM 20 MTR DECKSALON

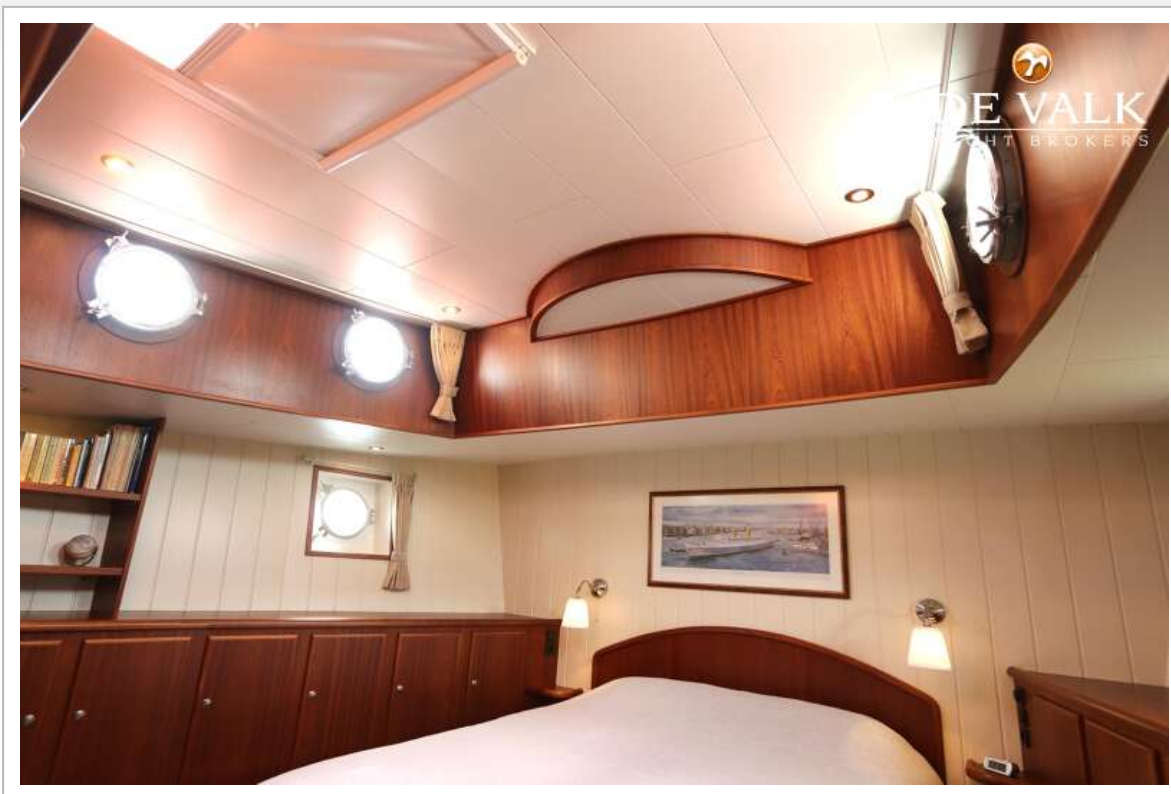


# LUXE MOTOR DE ALM 20 MTR DECKSALON





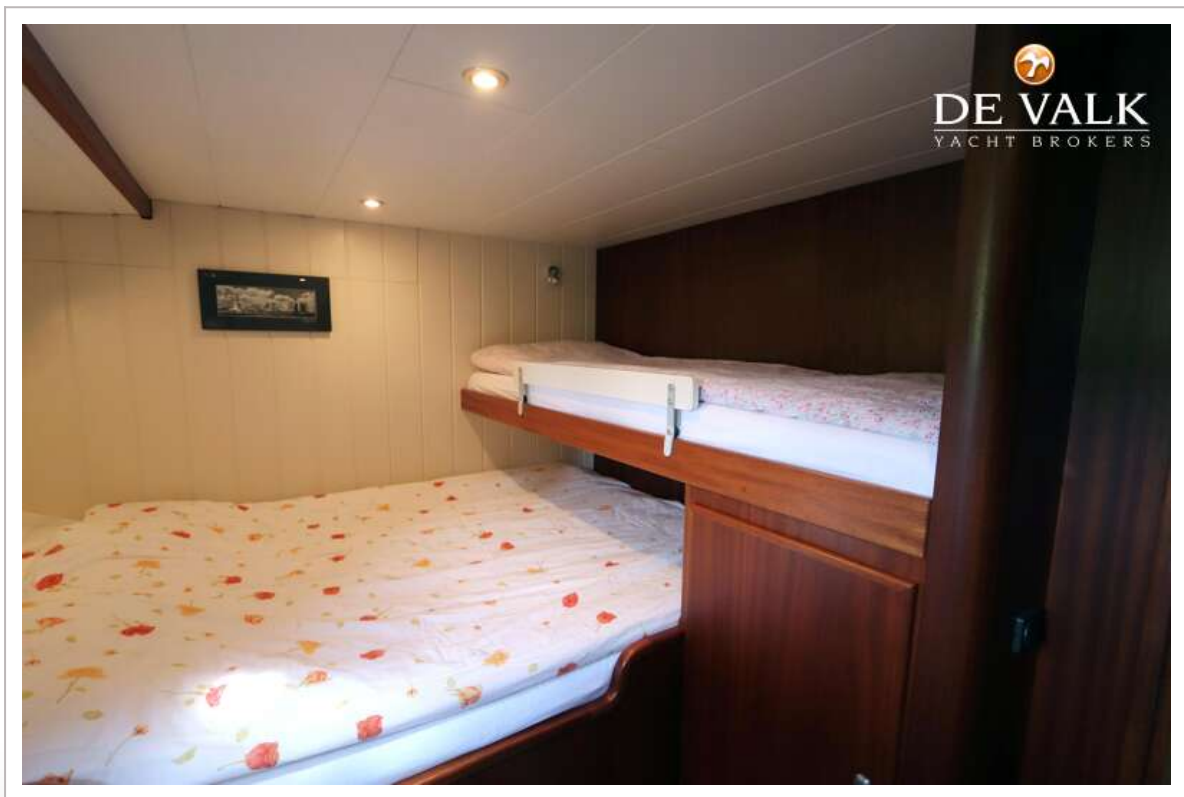
# LUXE MOTOR DE ALM 20 MTR DECKSALON



# LUXE MOTOR DE ALM 20 MTR DECKSALON

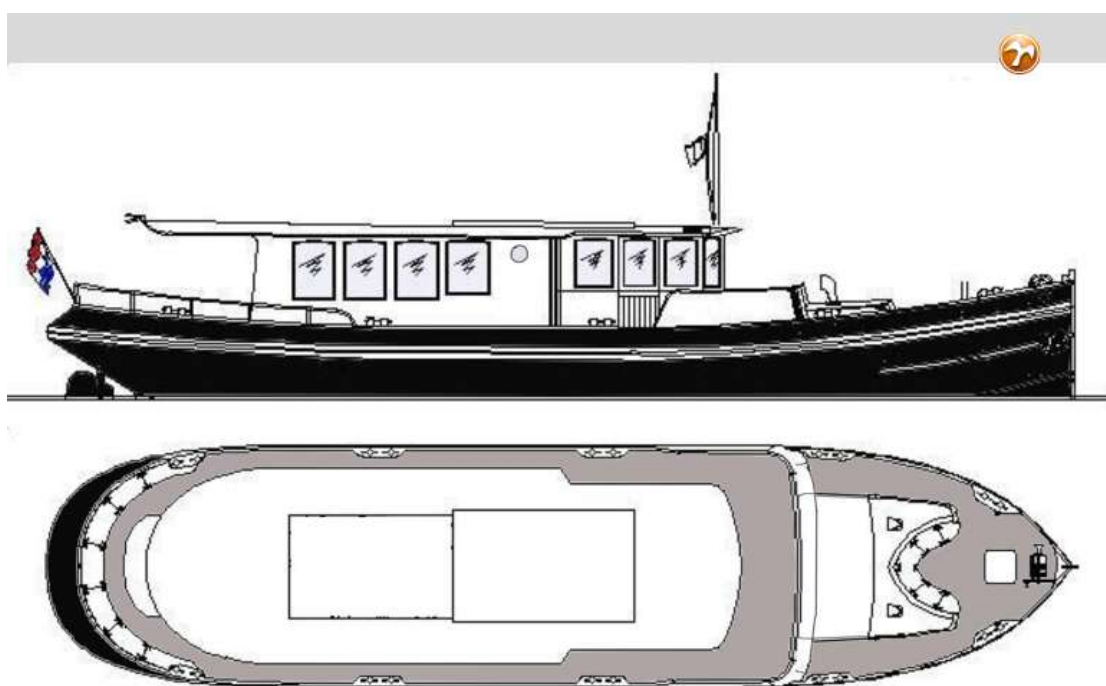


# LUXE MOTOR DE ALM 20 MTR DECKSALON

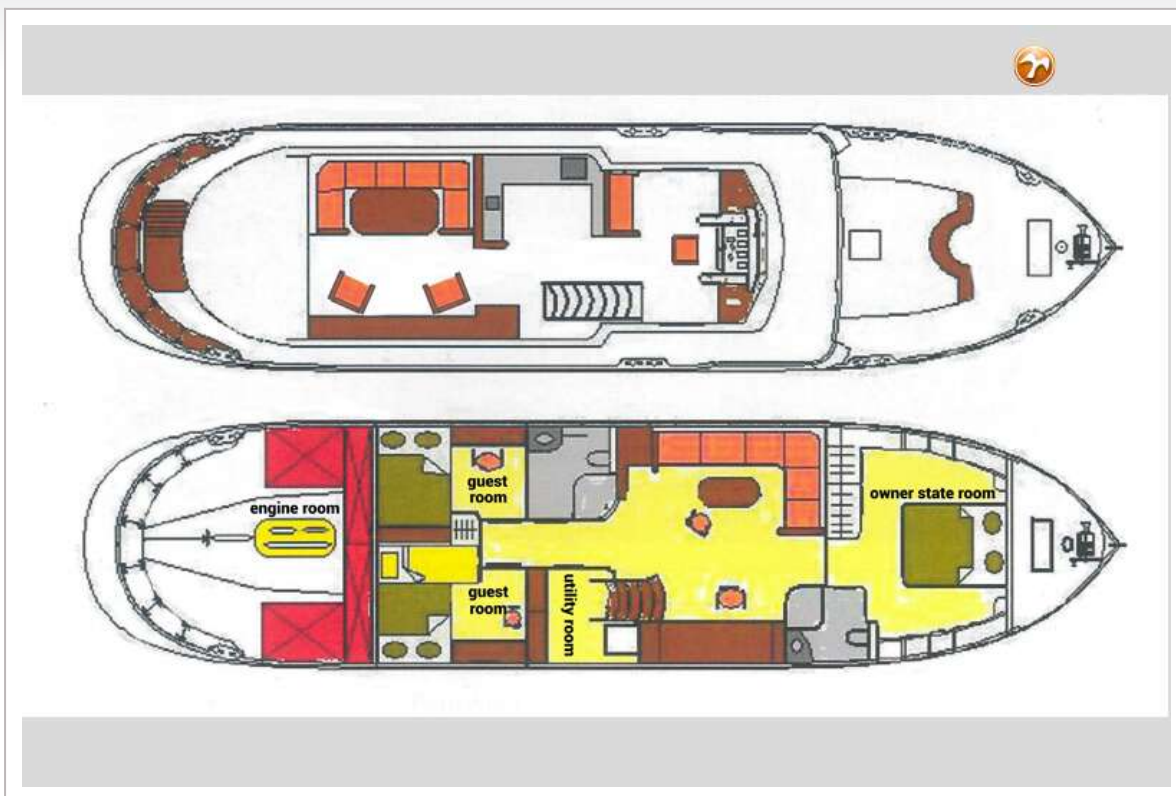




# LUXE MOTOR DE ALM 20 MTR DECKSALON

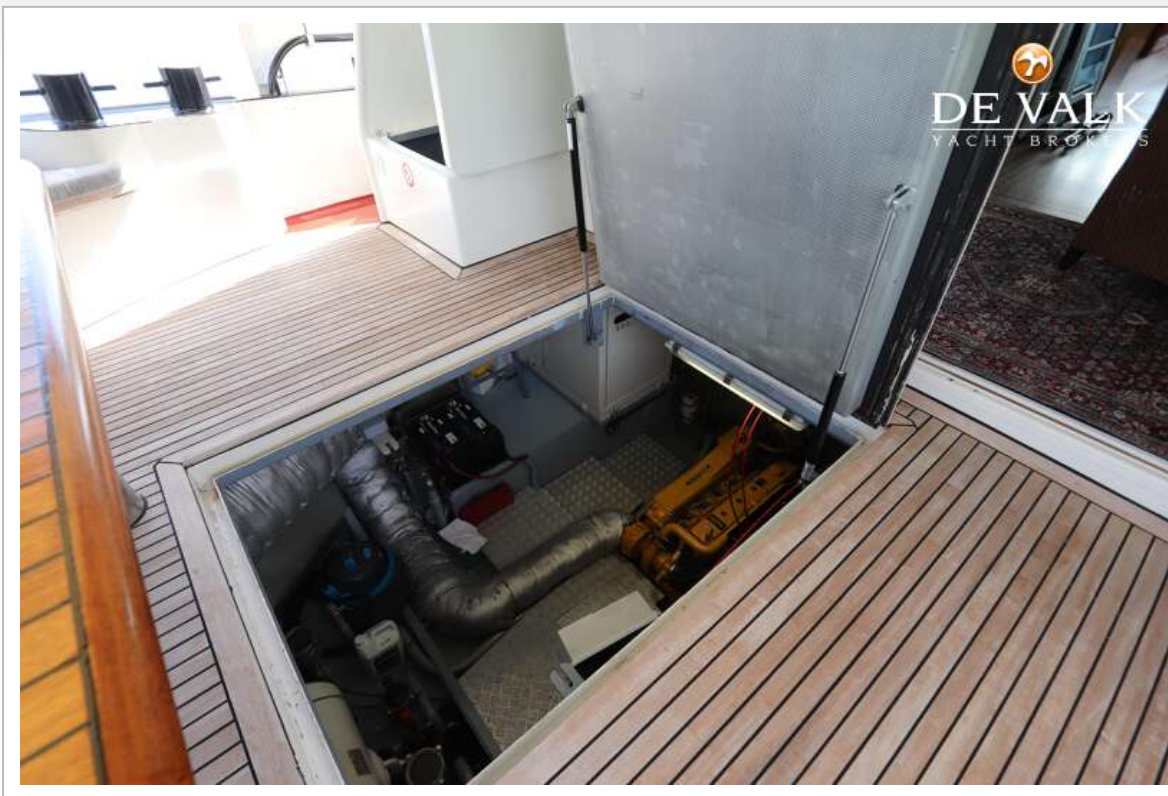


# LUXE MOTOR DE ALM 20 MTR DECKSALON





# LUXE MOTOR DE ALM 20 MTR DECKSALON



# LUXE MOTOR DE ALM 20 MTR DECKSALON

