



DE VALK
YACHT BROKERS



POLKA 45 ALUMINIUM CRUISER



DE VALK
YACHT BROKERS

POLKA 45 ALUMINIUM CRUISER

BROKER'S COMMENTS

A classic Dutch built aluminium cruiser designed by J.W. Kesteloo. Her sister ship; "Betelgeuze" sailed the "Ostar" across the North Atlantic several times. "Else" excels in seaworthiness, cruising performance and safety. Built by Kesteloo who were famous for their Polka range. Now in the hands of her third owner who just had her deck, superstructure and topsides painted professionally, Shining on the hard at De Valk Yachtbrokers in Sint Annaland she welcomes you with a smile. Take the virtual tour at: <https://roundme.com/tour/234763/view/>

Nick Lanting

SPECIFICATIONS

Dimensions	13.40 x 3.90 x 1.75 (m)	Builder	Jachtwerf Kesteloo
Built	1985	Cabins	2
Material	Aluminium	Berths	7
Engine(s)	1 x nanni 4.60 diesel	Hp/Kw	60.00 (hp), 44.00 (kw)
Asking price	sold (VAT)	Lying	at sales office

CONTACT

Sales office	De Valk Sint Annaland B.V.	Telephone	+31 (0)166 601 000
Address	Koelhuisweg 4 4697 RM Sint Annaland NL	E-mail	sintannaland@devalk.nl

DISCLAIMER

These particulars are given in good faith as supplied but cannot be guaranteed.



POLKA 45 ALUMINIUM CRUISER

GENERAL

Model	POLKA 45 ALUMINIUM CRUISER
Type	sailing yacht
LOA (m)	13,40
LWL (m)	10,50
Beam (m)	3,90
Draft (m)	1,75
Air draft (m)	19,00
Headroom (m)	1,90
Year built	1985
Builder	Jachtwerf Kesteloo
Country	The Netherlands
Designer	J.W. Kesteloo
Displacement (t)	13,5
Ballast (tonnes)	lead in aluminum 6
CE norm	NA
Hull material	aluminium
Hull colour	blue Awlgrip 2017
Hull thickness (mm)	6
Hull shape	round-bilged
Keel type	fin keel
Superstructure material	aluminium AL Mg 4.5 Mn Quality
Superstructure (mm)	4
Rubbing strake	aluminum
Deck material	aluminium AL Mg 4.5 Mn Quality
Deck finish	Treadmaster
Superstructure deck finish	Treadmaster
Cockpit deck finish	teak
Antifouling (year)	2017
Dorades	6
Window frame	aluminium



POLKA 45 ALUMINIUM CRUISER

Window material	tempered glass
Deckhatch	3 Goyot hatches renewed (2010)
Portholes	aluminium
Insulation	foam
Radar arch	
Fuel tank (litre)	aluminium 2 x 250
Freshwater tank (litre)	aluminium 2 x 360
Blackwater tank (litre)	aluminium 1 x 30
Wheel steering	mechanical Whitlock
Emergency tiller	yes
More info on paintwork	2017 - Awlgrippped
Extra info	all tank indicators do not functioning
Extra info	also know as the Polka 44-42 design

ACCOMMODATION

Cabins	2
Berths	7
Interior	teak
Floor	teak and holly
Saloon	yes
Headroom saloon (m)	1,90
Heating	diesel ducted hot air Webasto
Chart table	yes
Aft Cabin	yes
Dinette to convert into berth	yes
Convertible berth	2
Galley	yes
Countertop	plastic
Sink	stainless steel
Cooker	calor gas Mobilive 3-burner
Oven	+ Grill



POLKA 45 ALUMINIUM CRUISER

Fridge	(2010)
Hot water system	220V + engine Boiler needs work
Water pressure system	electrical
Manual and/or foot pump	yes
Crockery	yes
Owners cabin	double bed
Wardrobe	hanging/drawers/shelves
Bathroom	shared
Toilet	shared
Toilet system	manual
Wash basin	in the bathroom
Shower	shared
Guest cabin 1	double bed + single bed
Bathroom	shared
Toilet	shared
Toilet system	manual
Wash basin	in the bathroom

MACHINERY

No of engines	1
Make	Nanni
Type	4.60
HP	60,00
kW	44,00
Fuel	diesel
Year installed	2010
Maximum speed (kn)	8,00
Cruising speed (kn)	7,00
Consumption (l/hr)	3,00
Engine hours	252
Engine cooling system	freshwater heat exchanger



POLKA 45 ALUMINIUM CRUISER

Drive	shaft
Engine controls	bowden cable
Gearbox	hydraulic
Bowthruster	electric Maxpower 125-24v 11hp (2010)
Propeller type	fixed
Propeller blades	3
Propeller shaft material	stainless steel
Shaft lubrication	water
Manual bilge pump	2 x
Electric bilge pump	1 x (2010)
Bilge alarm	(2010)
Electrical installation	12/24/220v
Start battery	1x
Service battery	6x
Bowthruster battery	2x
Battery monitor	Mastervolt Micc Panel (2009)
Inverter	Mastervolt DC-DC 24/12 (2010)
Battery charger/inverter	Mass Combi 24/2000-60 (2009)
Shorepower	with cable
Insulation transformer	Mass GI 3.5
Extra info	220v fuse box
Extra info	Mastervolt Alternator 24/75 amp

NAVIGATION

Compass	C.Path pedestal (2006)
Compass on flybridge	VDO Sumlog II
Electric compass	VDO Sumlog II
Depth sounder	VDO Sumlog II
Log	VDO Sumlog II
Windset	VDO Sumlog II
Repeater	yes



POLKA 45 ALUMINIUM CRUISER

VHF	with Atis and spare antenna Skanti 1000P
Autopilot	Drive unit is dysfunctional Autohelm 6000
Radar	Furuno
GPS	Furuno GP 32
Plotter	See computer
Navtex	Furuno NX 300, Lo-Kata + printer
Personal computer	Mini Computer
Electronic chart(s)	Stentec
AIS transponder	not installed
Navigation lights	yes
Extra info	more nav aids on board than described in these specs; functioning unknow

EQUIPMENT

Fixed hardtop	Aluminum
Cockpit cushions	yes
Boarding ladder	stainless steel
Anchor	CQR Plough
Anchor chain	50 m
Windlass	electrical Lofrans 24v (2010)
Outboard	not available
Outboard support	2x
Sea railing	stainless steel
Pushpit	yes
Pulpit	yes
Life raft	yes
Last life raft survey	Expired
Lifebuoy	yes
Radar reflector	yes
Fenders	yes
Mooring lines	yes



POLKA 45 ALUMINIUM CRUISER

Spare parts	yes
Radio-cd player	2 x
Clock - barometer	yes
Fire extinguisher	yes
Latest extinguisher survey	Expired

RIGGING

Rigging	sloop-cutter
Standing rigging	wire
Brand mast	Seldén
Material mast	aluminium
Spreaders	2 x 2
Keel stepped mast	yes
Fully battened mainsail	Old
Genoa	Old
Genoa furler	Goiot
Spinnaker	with squeezer (1997)
Staysail furler	Goiot (2010)
Yankee	Old
Trysail	Orange Old
Stormjib	Orange Old
Reefing System	slabreefing
Backstay adjuster	mechanical
Boomvang	mechanical
Primary sheet winch	2 x 48 CST (2006) Lewmar
Secondary sheet winch	2 x 43 CST
Halyard winches	2 x 43 CST Lewmar
Spinnaker winch	2 x 43 CST Lewmar
Reefing winch	1 x 30ST Lewmar
Spi-pole	aluminium
Isolated backstay	yes



POLKA 45 ALUMINIUM CRUISER

Extra info

All running rigging and mast foot blocks renewed (2005)



POLKA 45 ALUMINIUM CRUISER



POLKA 45 ALUMINIUM CRUISER



POLKA 45 ALUMINIUM CRUISER



POLKA 45 ALUMINIUM CRUISER



POLKA 45 ALUMINIUM CRUISER



POLKA 45 ALUMINIUM CRUISER



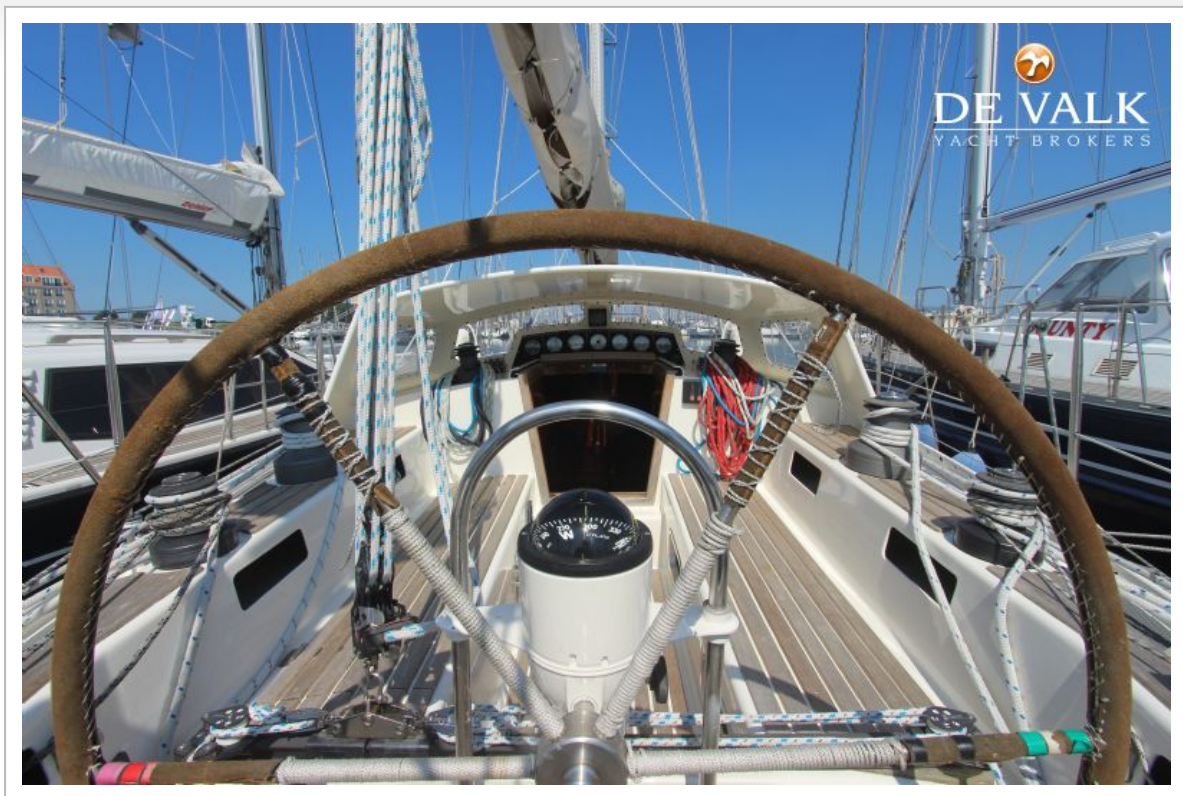
POLKA 45 ALUMINIUM CRUISER



POLKA 45 ALUMINIUM CRUISER



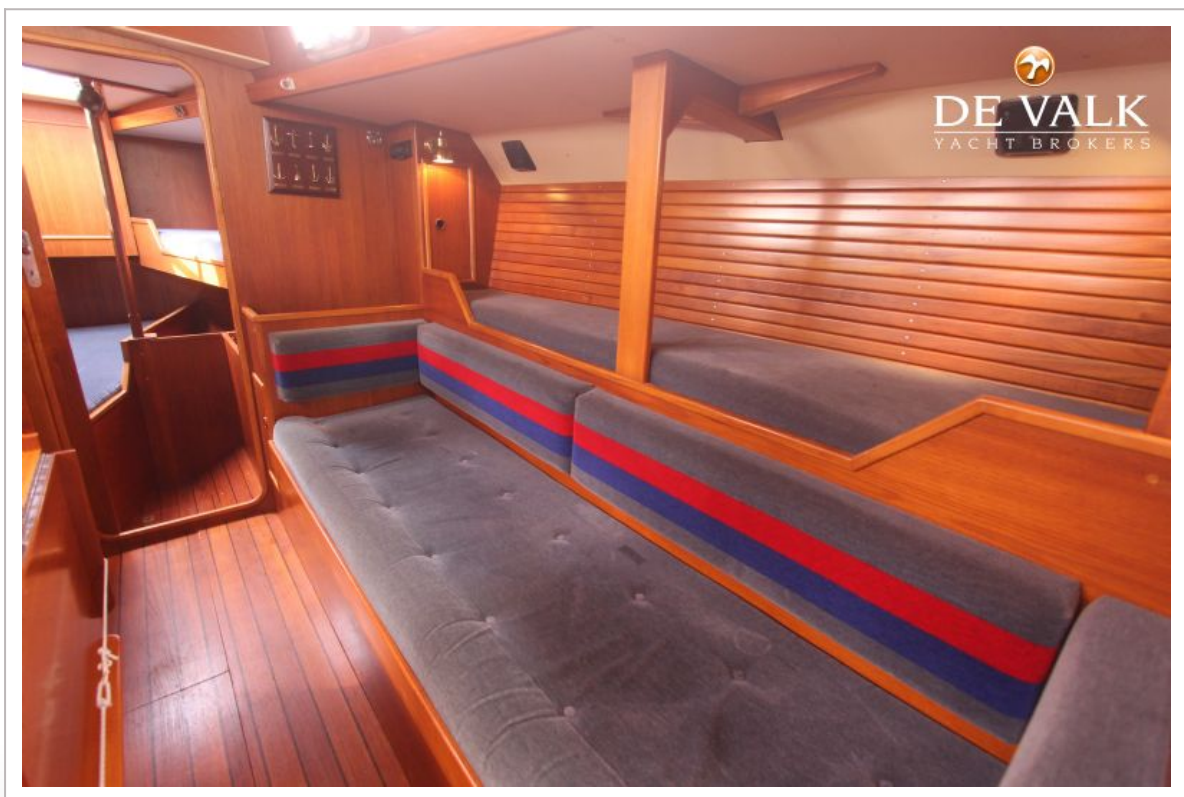
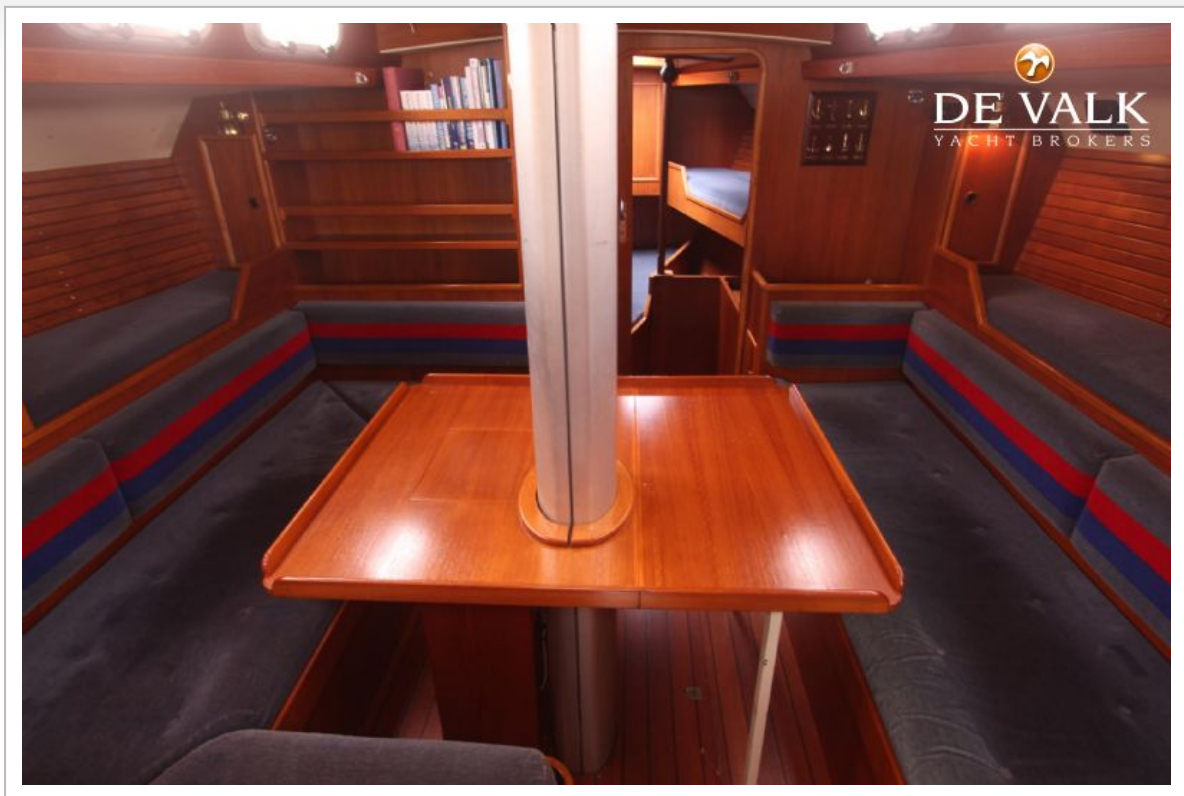
POLKA 45 ALUMINIUM CRUISER



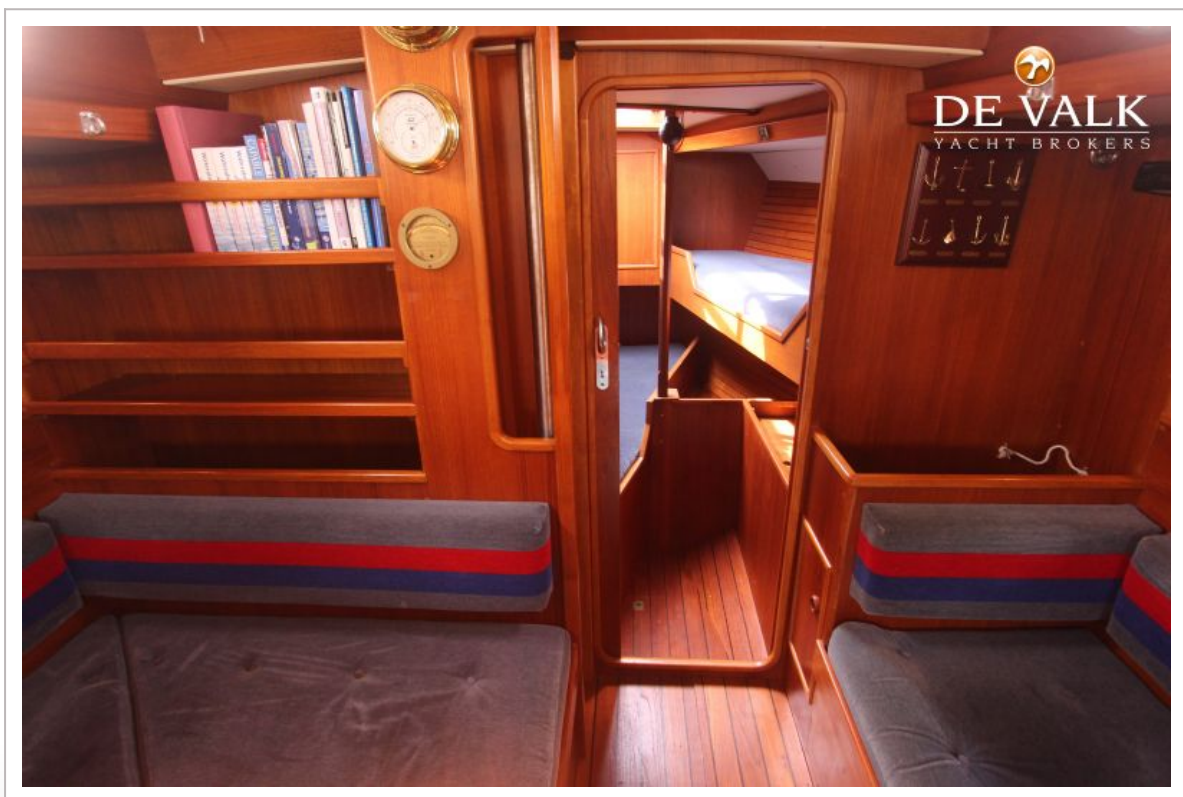
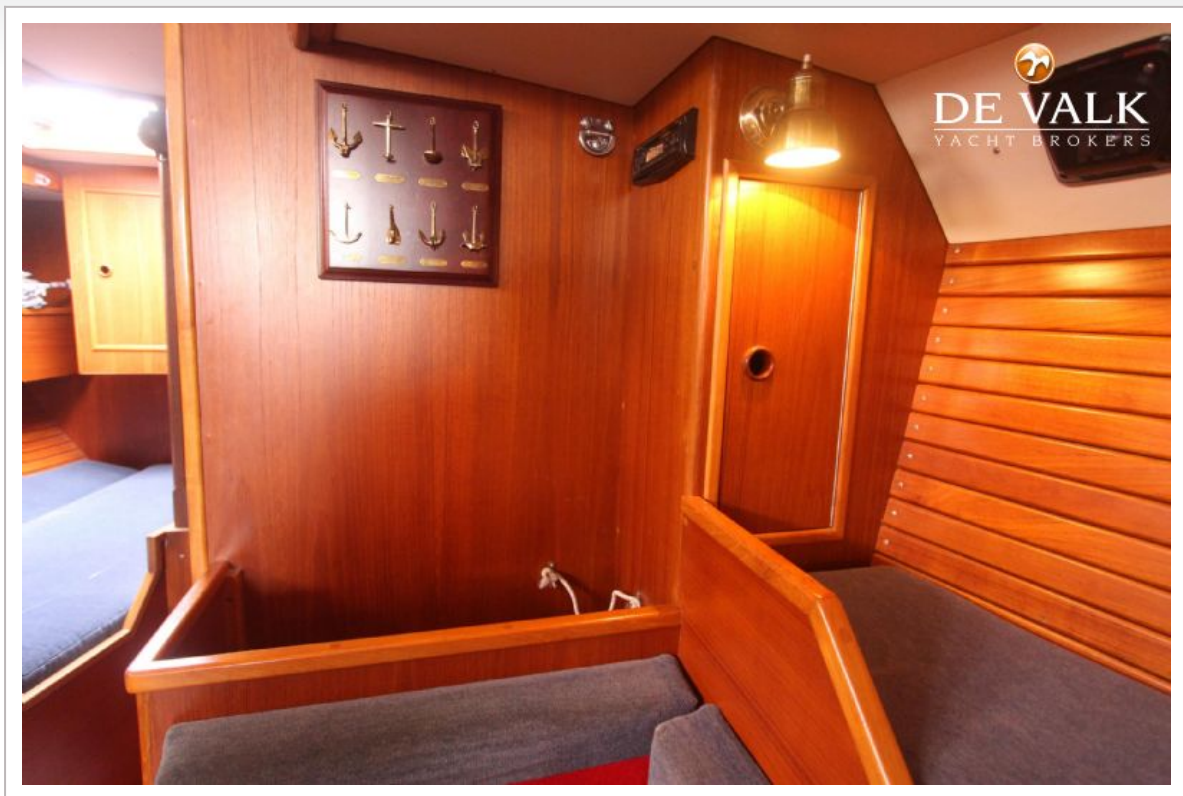
POLKA 45 ALUMINIUM CRUISER



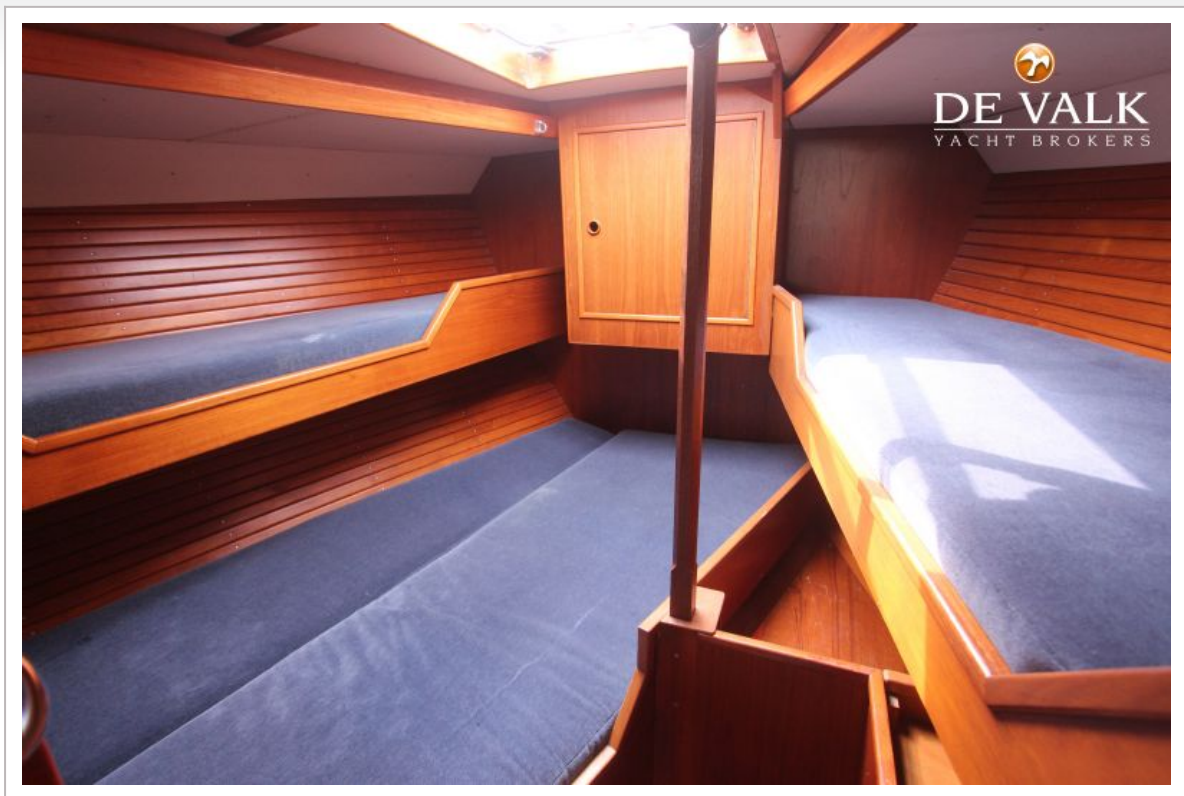
POLKA 45 ALUMINIUM CRUISER



POLKA 45 ALUMINIUM CRUISER



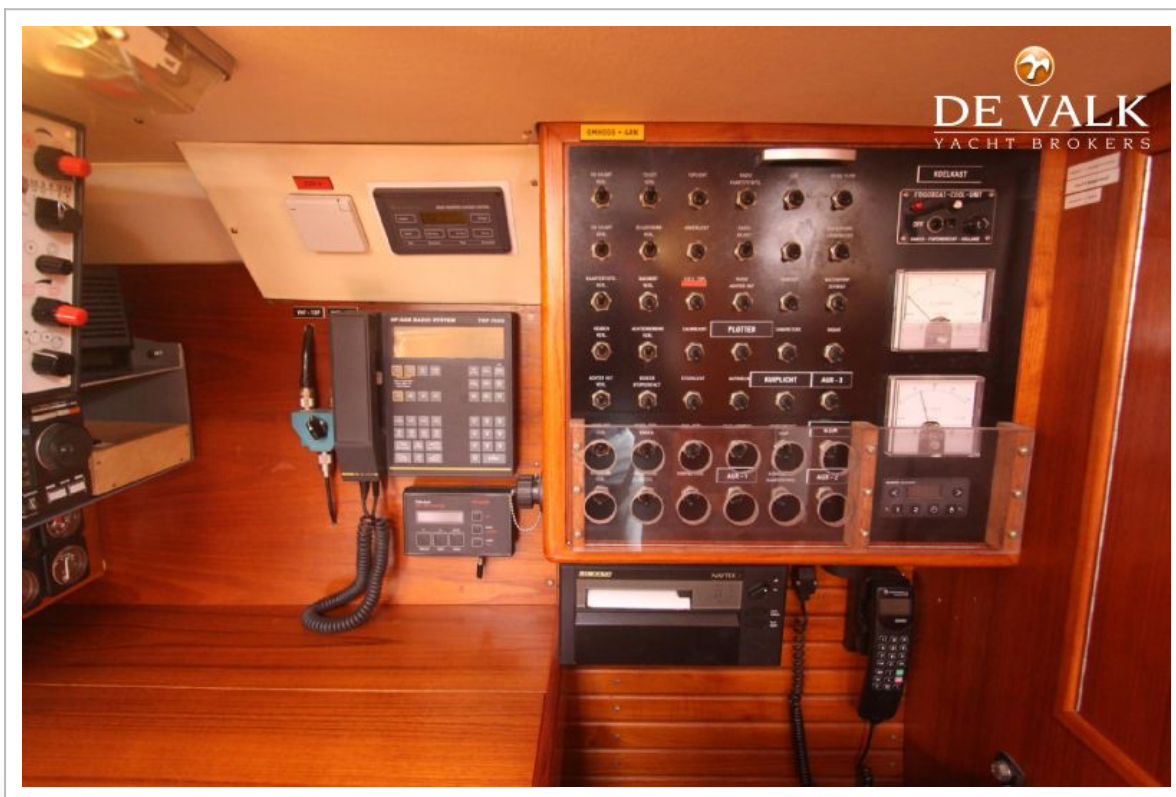
POLKA 45 ALUMINIUM CRUISER



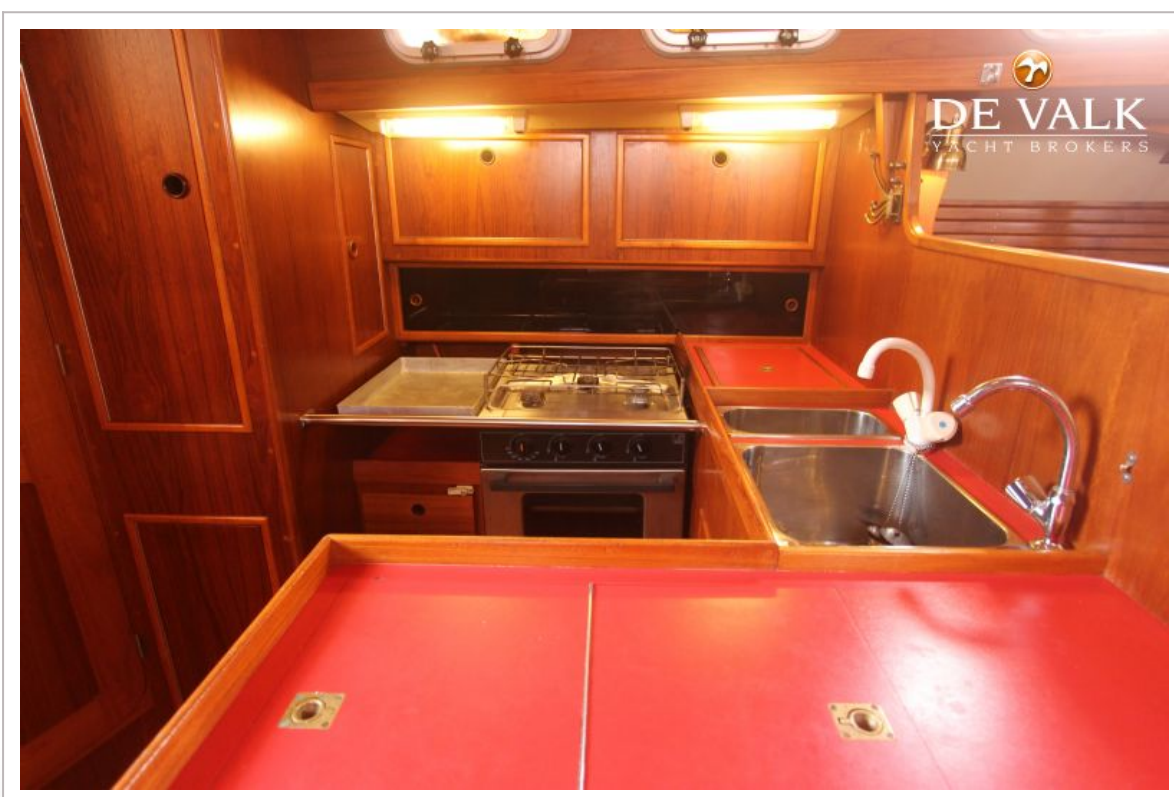
POLKA 45 ALUMINIUM CRUISER



POLKA 45 ALUMINIUM CRUISER



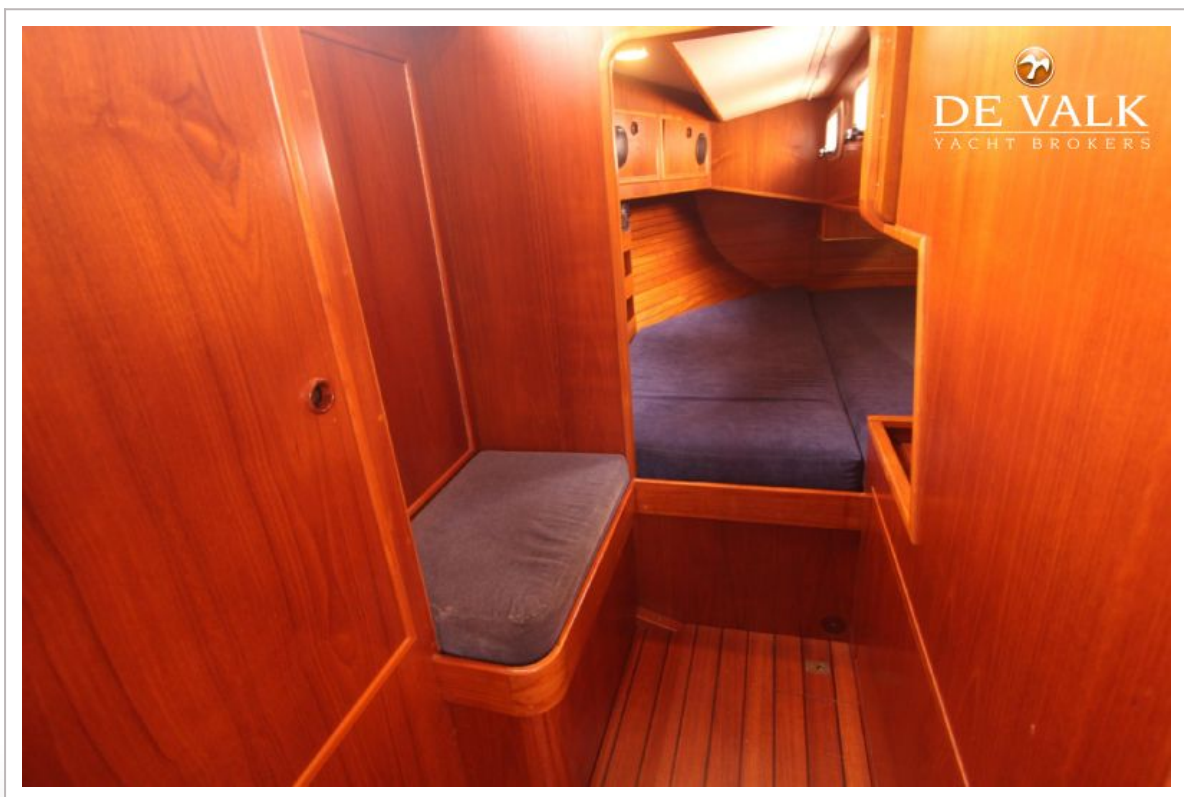
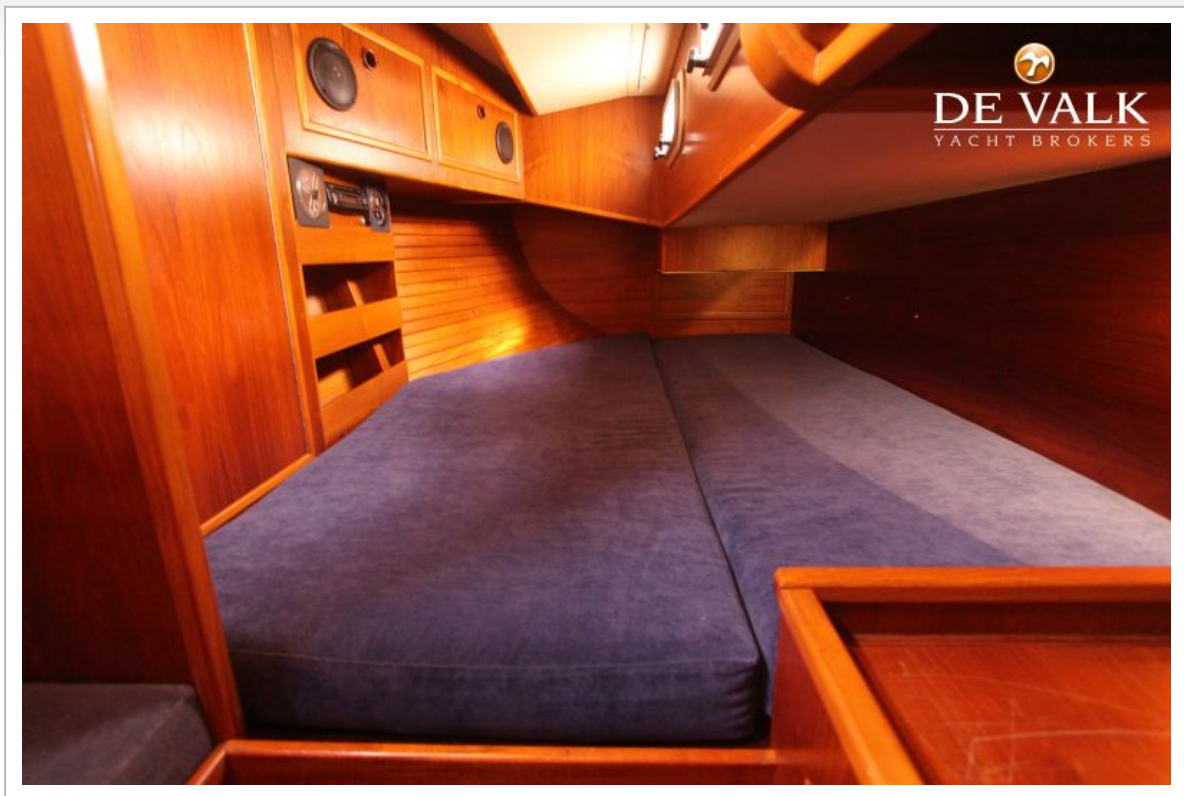
POLKA 45 ALUMINIUM CRUISER



POLKA 45 ALUMINIUM CRUISER



POLKA 45 ALUMINIUM CRUISER



POLKA 45 ALUMINIUM CRUISER



POLKA 45 ALUMINIUM CRUISER

