



## GRAND BANKS 36 SEDAN RIVIERA



# GRAND BANKS 36 SEDAN RIVIERA

## BROKER'S COMMENTS

Based upon the well tested and appreciated GB36 hull, the Sedan model with the lower fly bridge is best suitable for offshore and inland waterways. With twin upgraded Volvo diesels safety at sea is secured as well as cruising canals with traffic. The salon is more spacious than the standard EU model. She has been well kept and offers very good accommodations and storage space in- and outside. Large open cockpit and fly bridge for optimum cruising comfort.

*Marc Weijenberg*

## SPECIFICATIONS

|                     |                               |                |                              |
|---------------------|-------------------------------|----------------|------------------------------|
| <b>Dimensions</b>   | 11.32 x 3.71 x 1.19 (m)       | <b>Builder</b> | American Marine Ltd          |
| <b>Built</b>        | 1987                          | <b>Cabins</b>  | 2                            |
| <b>Material</b>     | GRP                           | <b>Berths</b>  | 5                            |
| <b>Engine(s)</b>    | 2 x Volvo Penta TMD41L diesel | <b>Hp/Kw</b>   | 2 x 150.00 (hp), 110.25 (kw) |
| <b>Asking price</b> | sold (VAT )                   | <b>Lying</b>   | at sales office              |

## CONTACT

|                     |  |                  |                        |
|---------------------|--|------------------|------------------------|
| <b>Sales office</b> | De Valk Sint Annaland B.V.                   | <b>Telephone</b> | +31 (0)166 601 000     |
| <b>Address</b>      | Koelhuisweg 4<br>4697 RM Sint Annaland<br>NL | <b>E-mail</b>    | sintannaland@devalk.nl |

## DISCLAIMER

These particulars are given in good faith as supplied but cannot be guaranteed.



# GRAND BANKS 36 SEDAN RIVIERA

## GENERAL

|                            |                              |
|----------------------------|------------------------------|
| Model                      | GRAND BANKS 36 SEDAN RIVIERA |
| Type                       | motor yacht                  |
| LOA (m)                    | 11,32                        |
| Beam (m)                   | 3,71                         |
| Draft (m)                  | 1,19                         |
| Air draft (m)              | 3,45                         |
| Headroom (m)               | 1,90                         |
| Year built                 | 1987                         |
| Builder                    | American Marine Ltd          |
| Country                    | Singapore                    |
| Designer                   | Kenneth L. Smith             |
| Displacement (t)           | 11                           |
| Hull material              | GRP                          |
| Hull colour                | white                        |
| Hull shape                 | hard chine                   |
| Keel type                  | long keel                    |
| Superstructure material    | GRP                          |
| Rubbing strake             | wood                         |
| Deck material              | GRP                          |
| Deck finish                | teak                         |
| Superstructure deck finish | non-skid moulded in          |
| Cockpit deck finish        | teak                         |
| Window frame               | aluminium                    |
| Window material            | tempered glass               |
| Deckhatch                  | yes                          |
| Portholes                  | yes                          |
| Flybridge                  | yes                          |
| Flybridge cover            | yes                          |
| Mast can be lowered        | manual                       |
| Steadying sail with mast   | yes                          |



# GRAND BANKS 36 SEDAN RIVIERA

|                            |                         |
|----------------------------|-------------------------|
| Fuel tank (litre)          | steel 2 x 750           |
| Freshwater tank (litre)    | stainless steel 2 x 393 |
| Blackwater tank (litre)    | polyethylene            |
| Blackwater tank extraction | deck extraction + pump  |
| Wheel steering             | cable steering          |
| Flybridge helm position    | cable steering          |

## ACCOMMODATION

|                         |  |
|-------------------------|--|
| Cabins                  | 2  |
| Berths                  | 5  |
| Interior                | teak   |
| Floor                   | parquet                                      |
| Open cockpit            | yes  |
| Pilot house/deck saloon | yes  |
| Headroom saloon (m)     | 1,90   |
| Heating                 | diesel ducted hot air Webasto Airtop Evo3900 |
| Dinette                 | L-shape with two seats                       |
| Sliding door to cockpit | yes  |
| Galley                  | yes  |
| Countertop              | plastic                                      |
| Sink                    | stainless steel                              |
| Cooker                  | calor gas Princess                           |
| Oven                    | Princess                                     |
| Extractor               | yes  |
| Gas alarm               | yes  |
| Fridge                  | + freezer compartment Waeco 12v              |
| Hot water system        | 220V + engine Isotherm                       |
| Water pressure system   | electrical                                   |
| Owners cabin            | v-bed  |
| Bed length (m)          | 2,00 x 0,80                                  |
| Wardrobe                | hanging/drawers/shelves                      |



# GRAND BANKS 36 SEDAN RIVIERA

|                |  |
|----------------|--|
| Bathroom       | yes  |
| Toilet         | shared 1   |
| Toilet system  | vacuum   |
| Wash basin     | in the bathroom                                  |
| Shower         | shared   |
| Guest cabin 1  | double bed                                       |
| Bed length (m) | 2,00 x 0,90                                      |
| Wardrobe       | hanging/drawers/shelves                          |
| Extra info     | Interior done in handcrafted Teak                |
| Extra info     | Well ventilated with sliding windows and hatches |

## MACHINERY

|                       |                            |
|-----------------------|----------------------------|
| No of engines         | 2                          |
| Make                  | Volvo Penta                |
| Type                  | TMD41L                     |
| HP                    | 150,00                     |
| kW                    | 110,25                     |
| Fuel                  | diesel                     |
| Year installed        | 1999                       |
| Maximum speed (kn)    | 12                         |
| Cruising speed (kn)   | 7                          |
| Consumption (l/hr)    | 12                         |
| Engine hours          | 486                        |
| Engine cooling system | freshwater heat exchanger  |
| Drive                 | shaft                      |
| Engine controls       | electrical Micro Commander |
| Bowthruster           | electric Vetus             |
| Sternthruster         | electric Vetus             |
| Exhaust               | watercooled                |
| Propeller type        | fixed                      |
| Propeller blades      | 3                          |



# GRAND BANKS 36 SEDAN RIVIERA

|                          |                                |
|--------------------------|--------------------------------|
| Propeller shaft material | stainless steel                |
| Shaft lubrication        | water                          |
| Manual bilge pump        | yes                            |
| Electric bilge pump      | yes                            |
| Electrical installation  | 12v/220v                       |
| Start battery            | 2 x                            |
| Service battery          | 3 x (2015)                     |
| Battery monitor          | yes                            |
| Battery charger          | Mastervolt                     |
| Inverter                 | yes                            |
| Shorepower               | with cable                     |
| Extra info               | rev counters indication is off |

## NAVIGATION

|                        |                             |
|------------------------|-----------------------------|
| Compass                | Ritchie                     |
| Compass on flybridge   | Ritchie                     |
| Electric compass       | via autopilot               |
| Depth sounder          | VDO                         |
| Log                    | VDO                         |
| Repeater               | on flybridge                |
| VHF                    | Simrad RS82                 |
| VHF handheld           | Raymarine Ray101            |
| Autopilot              | + remote control Raymarine  |
| Rudder angle indicator | via autopilot               |
| Plotter/GPS            | Raymarine Hybride           |
| Electronis chart(s)    | 1 x                         |
| AIS receiver           | yes                         |
| Extra info             | remote control for thruster |

## EQUIPMENT

|              |     |
|--------------|-----|
| Window cover | yes |
|--------------|-----|



# GRAND BANKS 36 SEDAN RIVIERA

|                            |                    |
|----------------------------|--------------------|
| Cockpit table              | yes                |
| Cockpit chairs             | 2 x                |
| Bathing platform           | yes                |
| Boarding ladder            | stainless steel    |
| Anchor                     | CQR Plough         |
| Anchor chain               | yes                |
| Windlass                   | electrical Lofrans |
| Capstan                    | yes                |
| Deck wash                  | yes                |
| Sea railing                | teak               |
| Grab rail (superstructure) | stainless steel    |
| Railing side opening gates | yes                |
| Pushpit                    | yes                |
| Pulpit                     | yes                |
| Lifebuoy                   | yes                |
| Horn                       | electric           |
| Radar reflector            | yes                |
| Fenders                    | yes                |
| Mooring lines              | yes                |
| Radio-cd player            | yes                |
| Fire extinguisher          | yes                |
| Latest extinguisher survey | yes                |

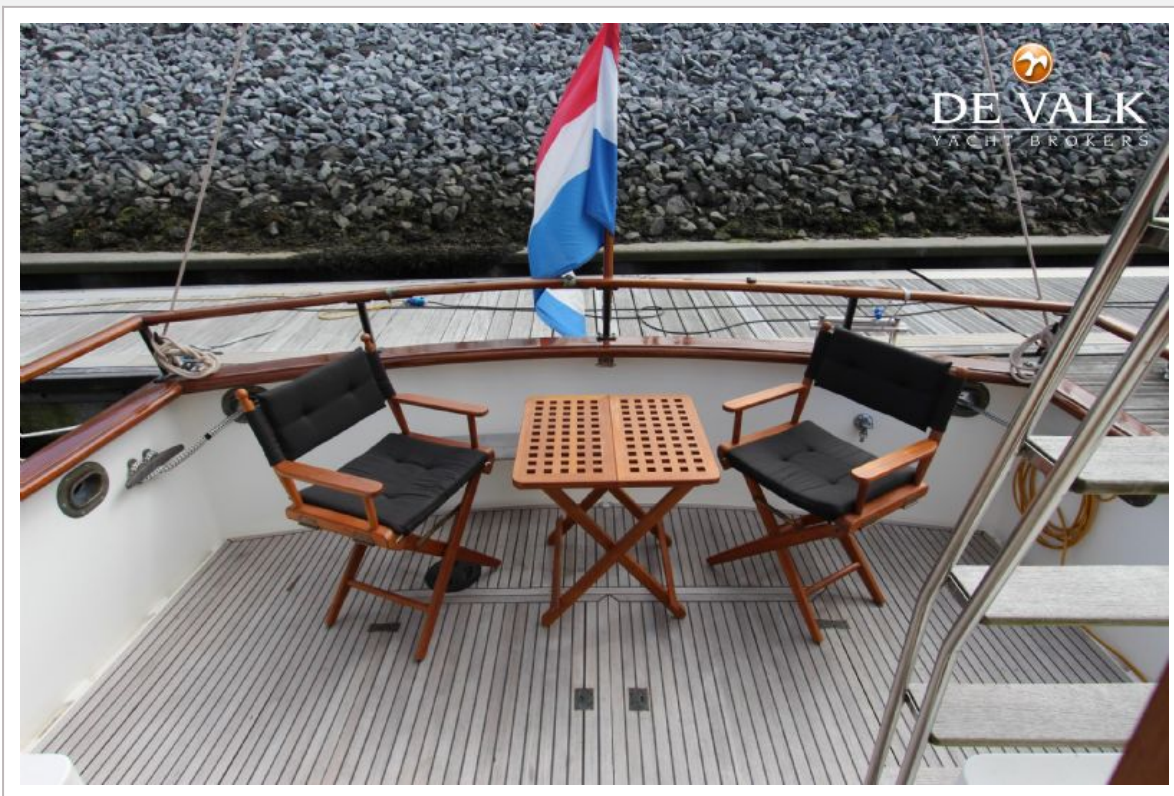


# GRAND BANKS 36 SEDAN RIVIERA





# GRAND BANKS 36 SEDAN RIVIERA



# GRAND BANKS 36 SEDAN RIVIERA

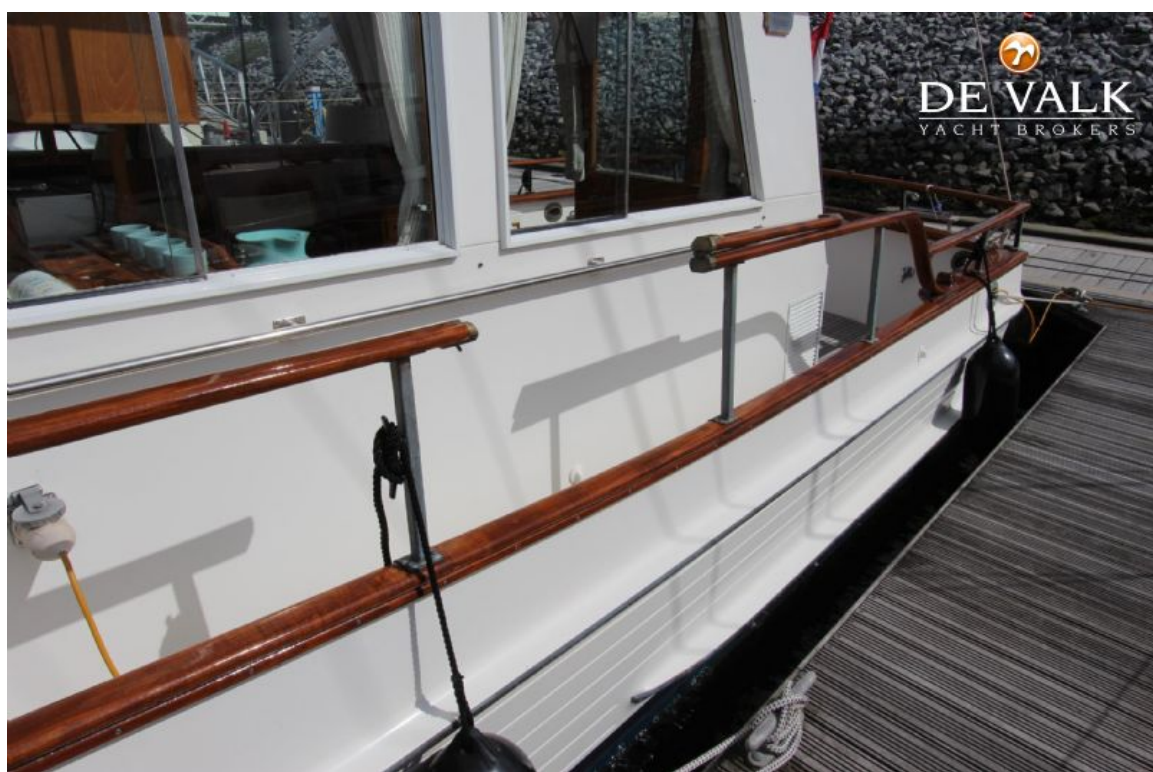




# GRAND BANKS 36 SEDAN RIVIERA



# GRAND BANKS 36 SEDAN RIVIERA





# GRAND BANKS 36 SEDAN RIVIERA



# GRAND BANKS 36 SEDAN RIVIERA





# GRAND BANKS 36 SEDAN RIVIERA



# GRAND BANKS 36 SEDAN RIVIERA

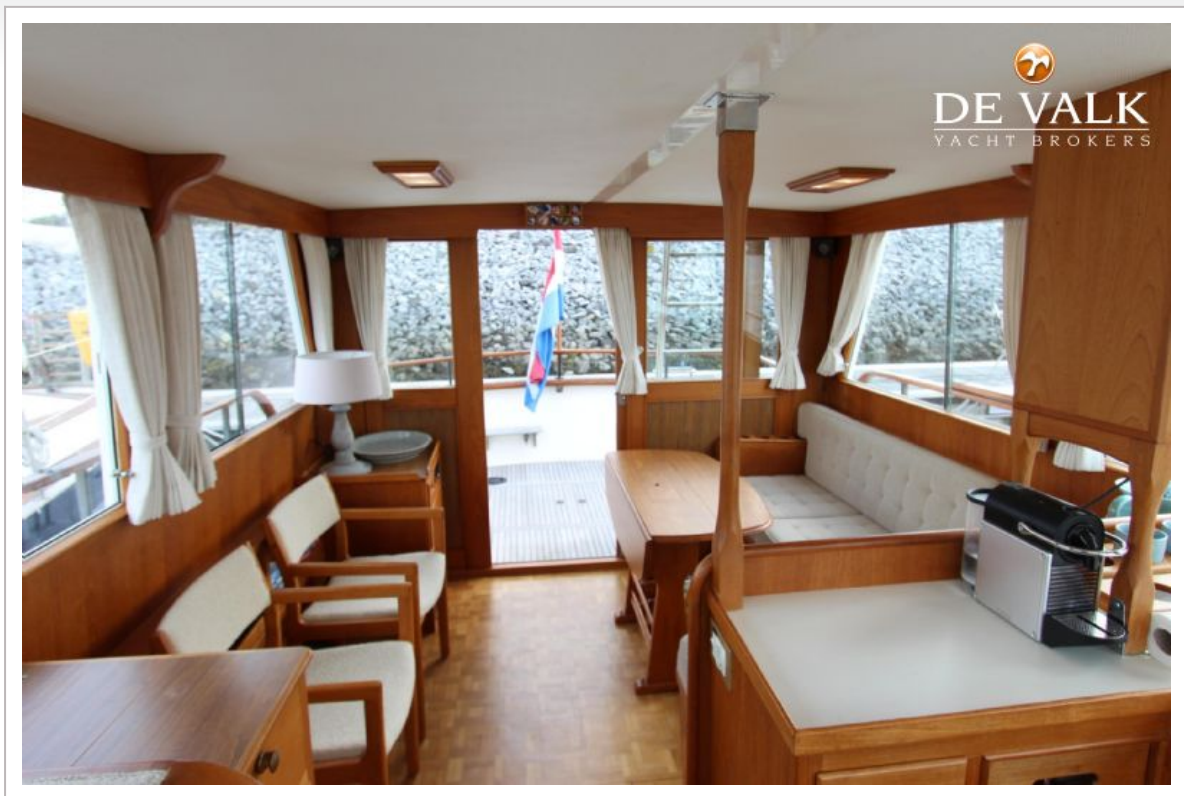




# GRAND BANKS 36 SEDAN RIVIERA



# GRAND BANKS 36 SEDAN RIVIERA





# GRAND BANKS 36 SEDAN RIVIERA



# GRAND BANKS 36 SEDAN RIVIERA

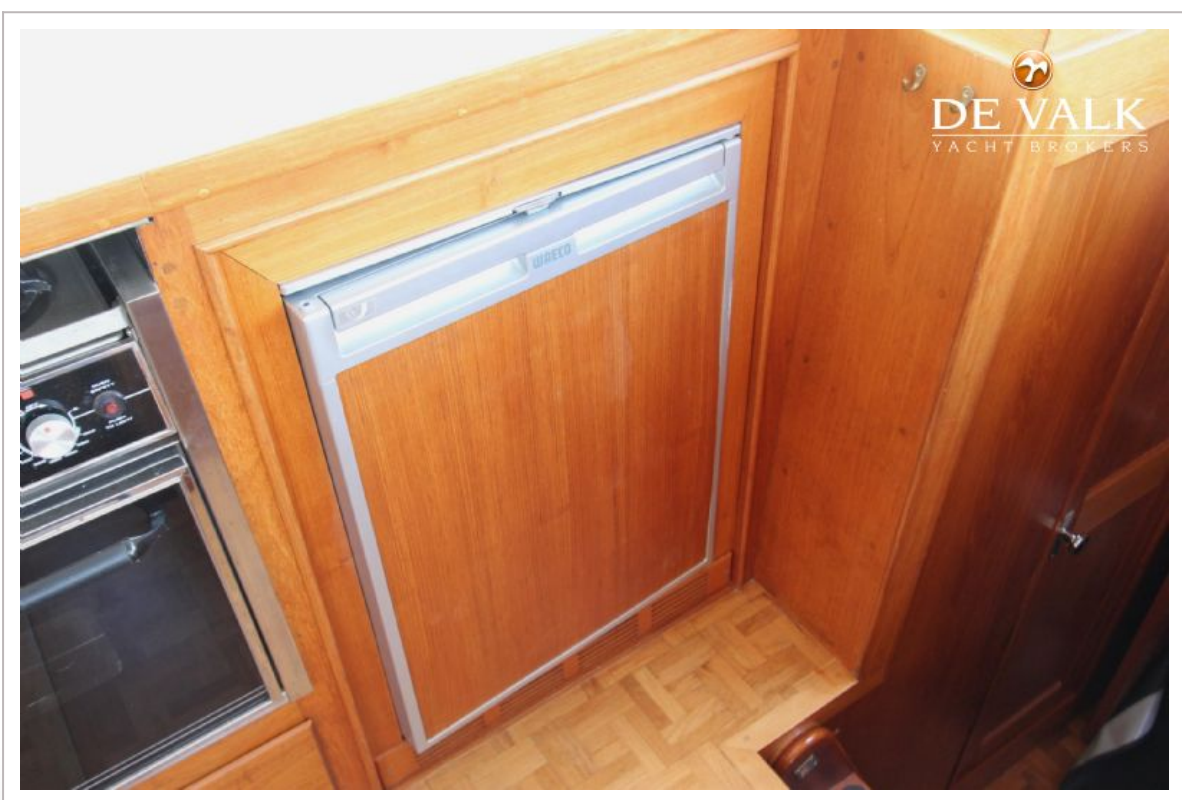




# GRAND BANKS 36 SEDAN RIVIERA

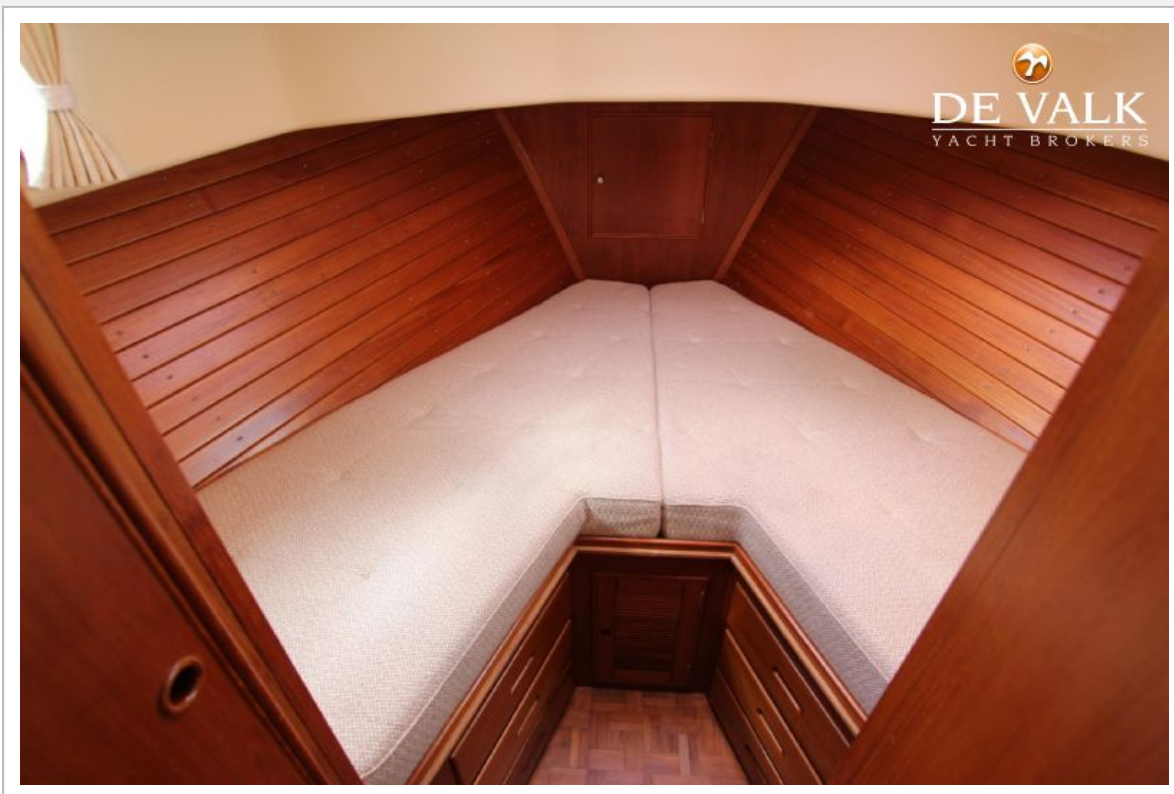


# GRAND BANKS 36 SEDAN RIVIERA





# GRAND BANKS 36 SEDAN RIVIERA

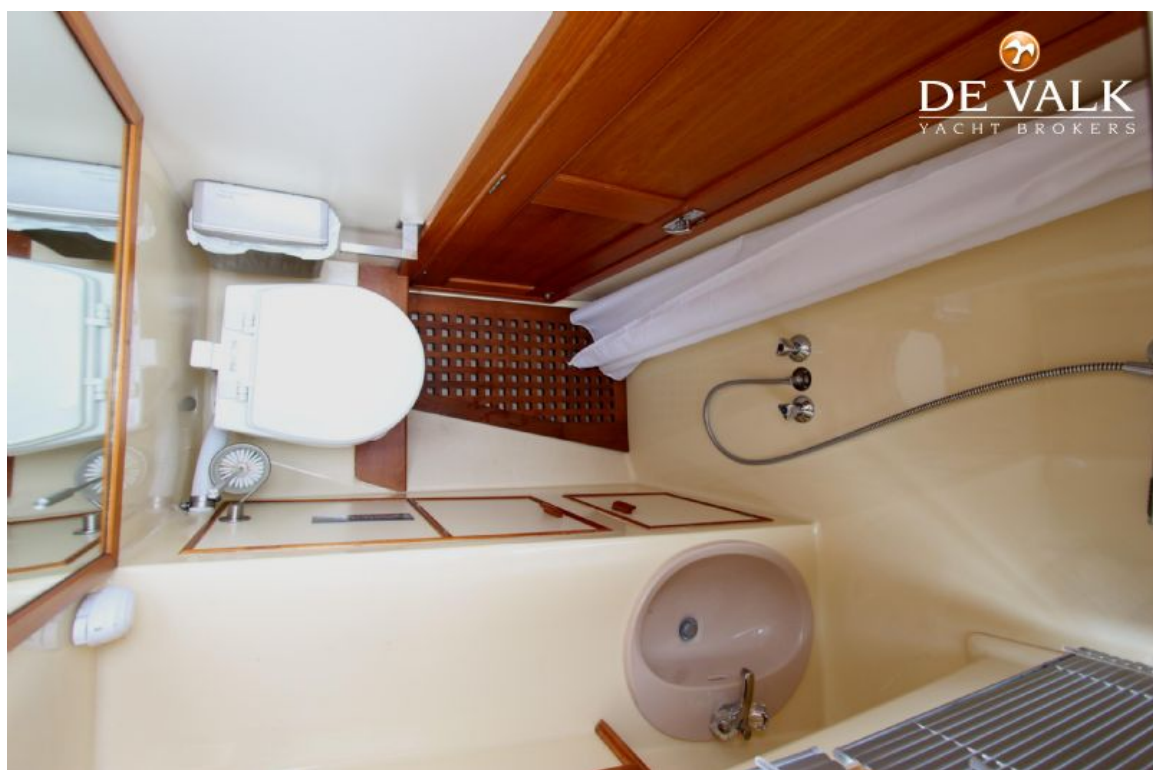


# GRAND BANKS 36 SEDAN RIVIERA

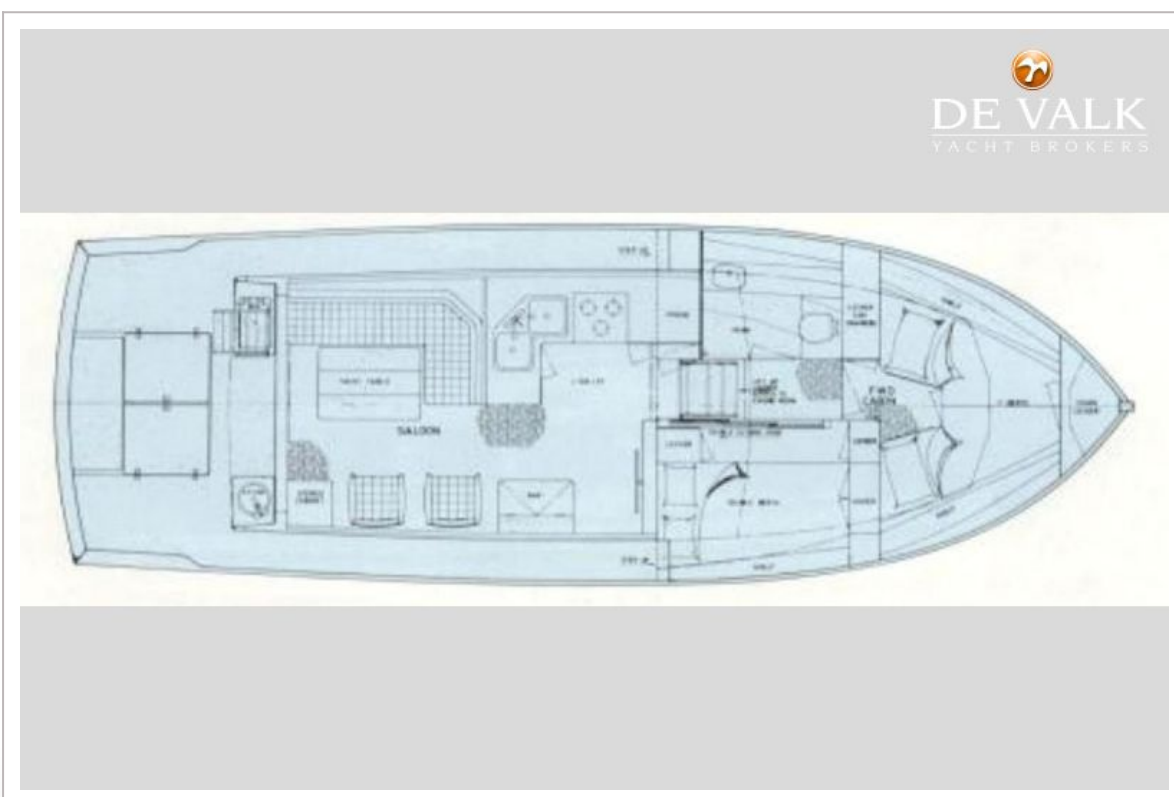
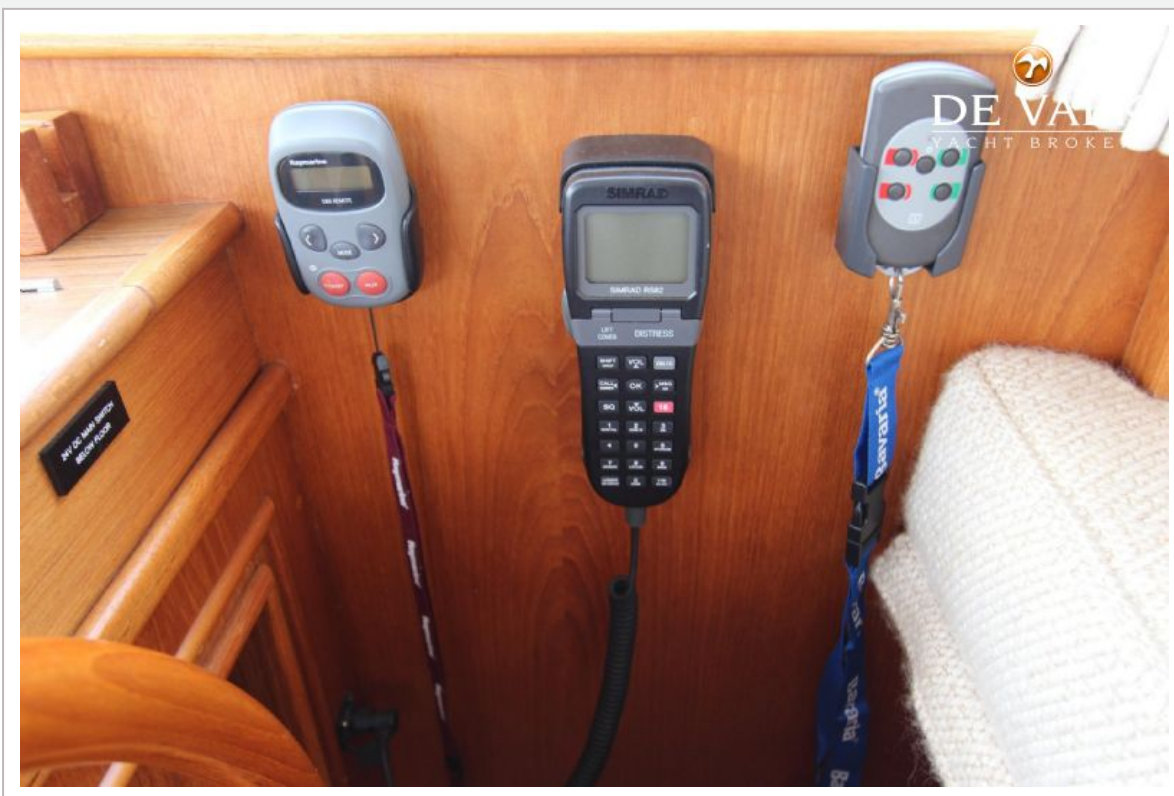




# GRAND BANKS 36 SEDAN RIVIERA

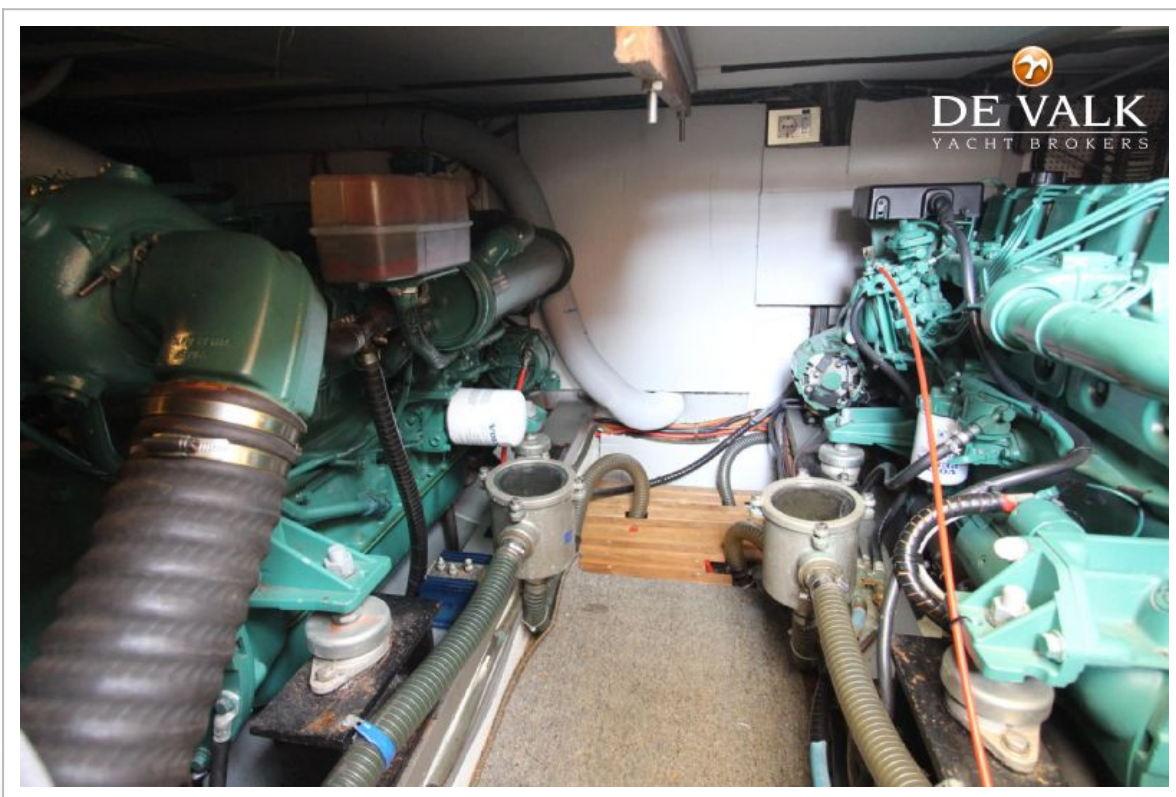


# GRAND BANKS 36 SEDAN RIVIERA

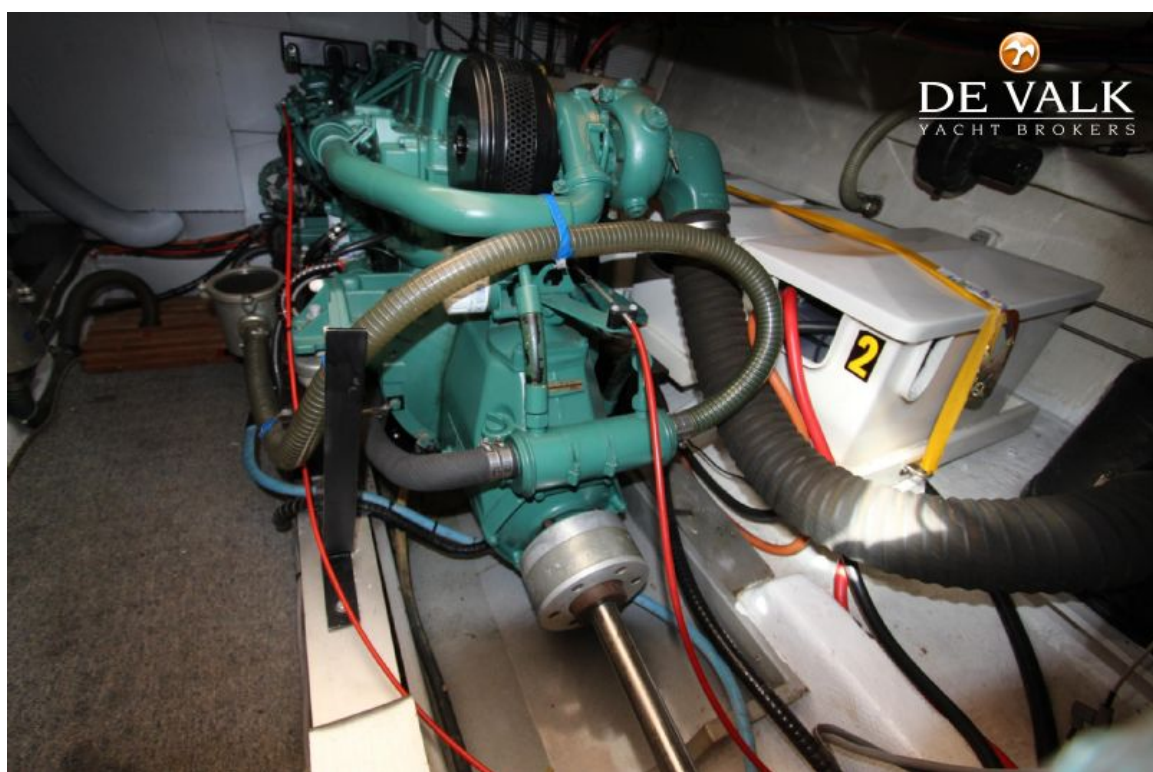




# GRAND BANKS 36 SEDAN RIVIERA



# GRAND BANKS 36 SEDAN RIVIERA





# GRAND BANKS 36 SEDAN RIVIERA

