



## JEANNEAU SUN ODYSSEY 37



# JEANNEAU SUN ODYSSEY 37

## BROKER'S COMMENTS

The Jeanneau Sun Odyssey 37 has good quality, ergonomics and comfort combined into one. An ideal comfortable, private one owner familycruiser with a bright saloon and over 1.90 headroom. All running rigging can be handled from the cockpit "Aldebaran" comes well equipped with a furling mainsail and Genoa, heating system, extra watertank, autopilot and recently renewed navigation equipment. Outfitted with a heavier 40 HP diesel engine she is easy to handle and has power to spare. She is ready for inspection in our sales marina and can be visited 7 days a week.

*Harald Padberg*

## SPECIFICATIONS

<b>Dimensions</b>	11.40 x 3.70 x 1.95 (m)	<b>Builder</b>	Jeanneau SA, France
<b>Built</b>	2000	<b>Cabins</b>	2
<b>Material</b>	GRP	<b>Berths</b>	7
<b>Engine(s)</b>	1 x Volvo Penta 2040 D BT diesel	<b>Hp/Kw</b>	40.00 (hp), 29.40 (kw)
<b>Asking price</b>	sold (VAT )	<b>Lying</b>	at sales office

## CONTACT

<b>Sales office</b>	De Valk Monnickendam B.V.	<b>Telephone</b>	+31 (0)299 65 63 50
<b>Address</b>	Hoogedijk 6 1145 PM Katwoude NL	<b>E-mail</b>	monnickendam@devalk.nl

## DISCLAIMER

These particulars are given in good faith as supplied but cannot be guaranteed.



## GENERAL

Model	JEANNEAU SUN ODYSSEY 37
Type	sailing yacht
LOA (m)	11,40
LWL (m)	9,70
Beam (m)	3,70
Draft (m)	1,95
Headroom (m)	1,91
Year built	2000
Builder	Jeanneau SA, France
Country	France
Designer	J. Fauroux & Jeanneau Design
Displacement (t)	6,1
Ballast (tonnes)	1,840
CE norm	A
Hull material	GRP
Hull colour	white
Hull shape	round-bilged
Keel type	fin keel
Superstructure material	GRP
Deck material	GRP
Superstructure deck finish	yes
Deckhatch	2 X Giot
Portholes	aluminium
Fuel tank (litre)	polyethylene 136 L.
Freshwater tank (litre)	polyethylene 320 L. + 150L.
Wheel steering	mechanical
Emergency tiller	yes
More info on hull	Cleaned and polished June 2017
Extra info	Blackwatertank preparation.



## ACCOMMODATION

Cabins	2
Berths	7
Interior	teak
Floor	teak and holly
Headroom saloon (m)	1,91 m
Heating	diesel ducted hot air Webasto Airtop
Chart table	yes
Dinette to convert into berth	yes
Galley	yes
Sink	stainless steel
Cooker	calor gas Eno 2 burner
Oven	yes
Fridge	needs new refrigerant Frigomatic 150L
Freezer	yes
Hot water system	220V + engine
Water pressure system	electrical
Owners cabin	v-bed
Bed length (m)	2,05
Wardrobe	hanging and shelves
Guest cabin 1	double bed
Bed length (m)	2,04
Wardrobe	hanging and shelves
Bathroom	separate
Toilet	separate
Toilet system	manual
Wash basin	in the bathroom
Shower	shared

## MACHINERY

No of engines	1
---------------	---



# JEANNEAU SUN ODYSSEY 37

<b>Make</b>	Volvo Penta
<b>Type</b>	2040 D BT
<b>HP</b>	40,00
<b>kW</b>	29,40
<b>Fuel</b>	diesel
<b>Year installed</b>	2000
<b>Cruising speed (kn)</b>	6,5
<b>Consumption (l/hr)</b>	Approx. 3
<b>Engine hours</b>	1932
<b>Engine cooling system</b>	freshwater heat exchanger
<b>Drive</b>	shaft
<b>Engine controls</b>	bowden cable
<b>Gearbox</b>	mechanical
<b>Electric bilge pump</b>	2 X
<b>Start battery</b>	yes
<b>Service battery</b>	yes
<b>Battery monitor</b>	yes
<b>Battery charger</b>	Cristec Nemo 25
<b>Solar panel</b>	yes
<b>Shorepower</b>	with cable

## NAVIGATION

<b>Compass</b>	Plastimo Horizon 135
<b>Depth sounder/log</b>	Raymarine I-70
<b>Windset</b>	Raymarine I-70
<b>VHF handheld</b>	Shipmate RS8300
<b>Autopilot</b>	Raymarine P-70R
<b>Plotter</b>	at chart table inside Raytheon RC420
<b>Radar/GPS/plotter</b>	Raymarine Hybrid Touch E95 in cockpit
<b>Navtex</b>	Target Navtex Pro
<b>AIS receiver</b>	Ramarine AIS 350



AIS transponder	Ramarine AIS 350
Navigation lights	yes

## EQUIPMENT

Sprayhood with grab rail	yes
Cockpit cover	with removable window panels
Cockpit table	removable
Bathing platform	yes
Boarding ladder	stainless steel 2 x
Deck shower	yes
Anchor	CQR Plough 16 KG
Anchor chain	yes
Windlass	electrical
Sea railing	wire
Railing side opening gates	2 x
Life raft	container
Life raft (pers)	6
Last life raft survey	expired 2015
Lifejackets	3 X
Fenders	yes

## RIGGING

Rigging	sloop
Standing rigging	wire
Brand mast	Z-Spar
Material mast	aluminium
Spreaders	2 X
Mainsail	29,3 m2
Stoway mast	yes
Genoa	yes
Genoa furler	yes



## Reefing System

quick-one-line-reefing

## Primary sheet winch

2 speed Harken 44

## Multifunctional winches

2 speed Harken 32







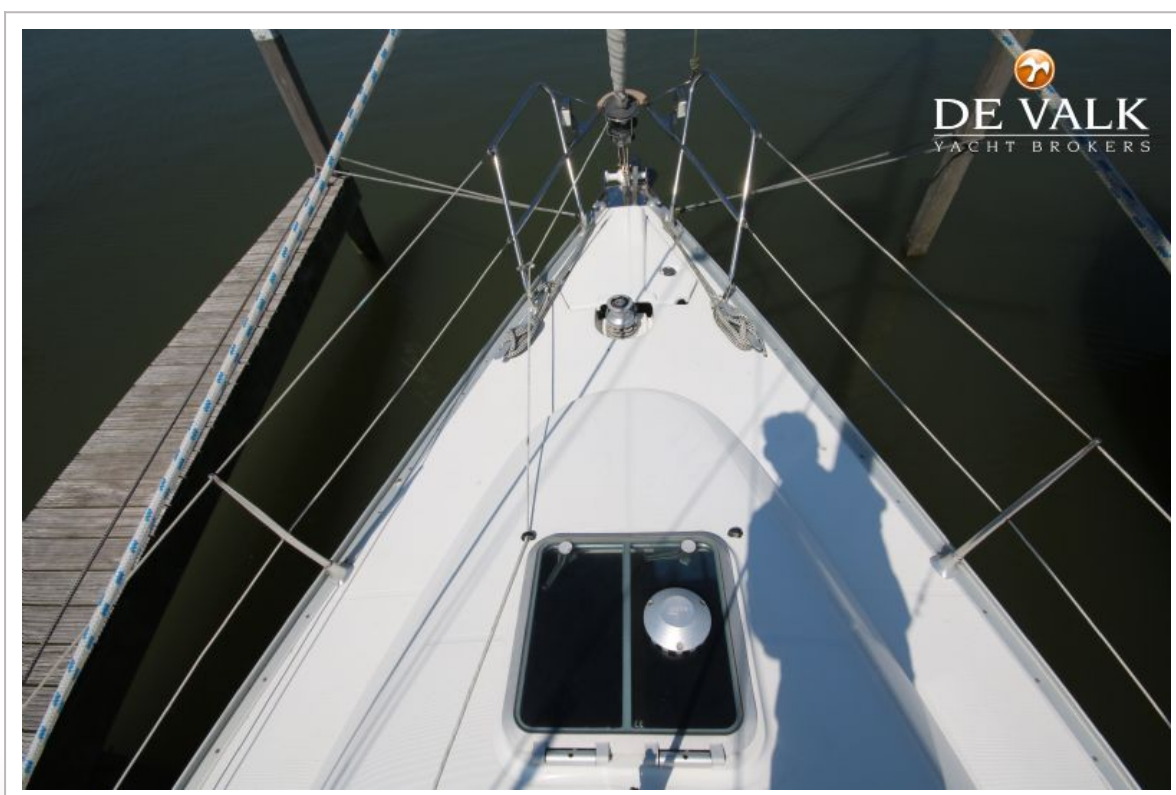
# JEANNEAU SUN ODYSSEY 37

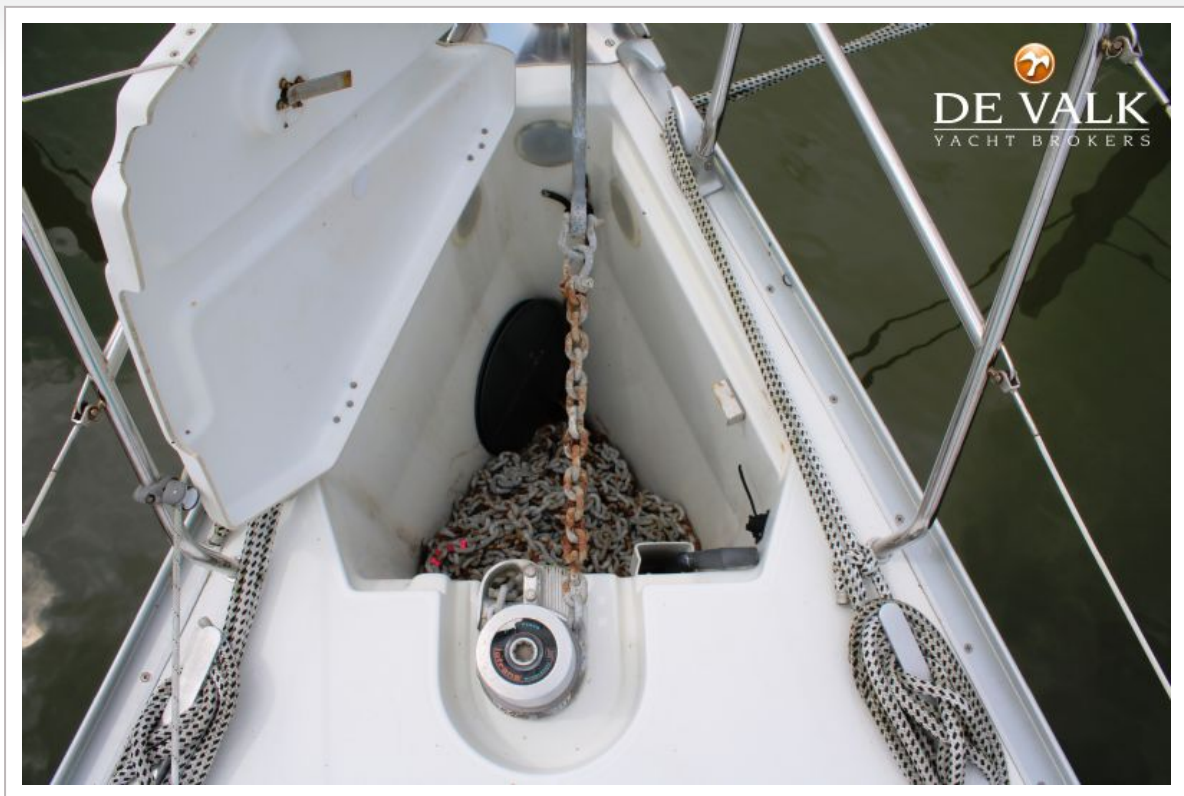






# JEANNEAU SUN ODYSSEY 37







# JEANNEAU SUN ODYSSEY 37



# JEANNEAU SUN ODYSSEY 37





# JEANNEAU SUN ODYSSEY 37

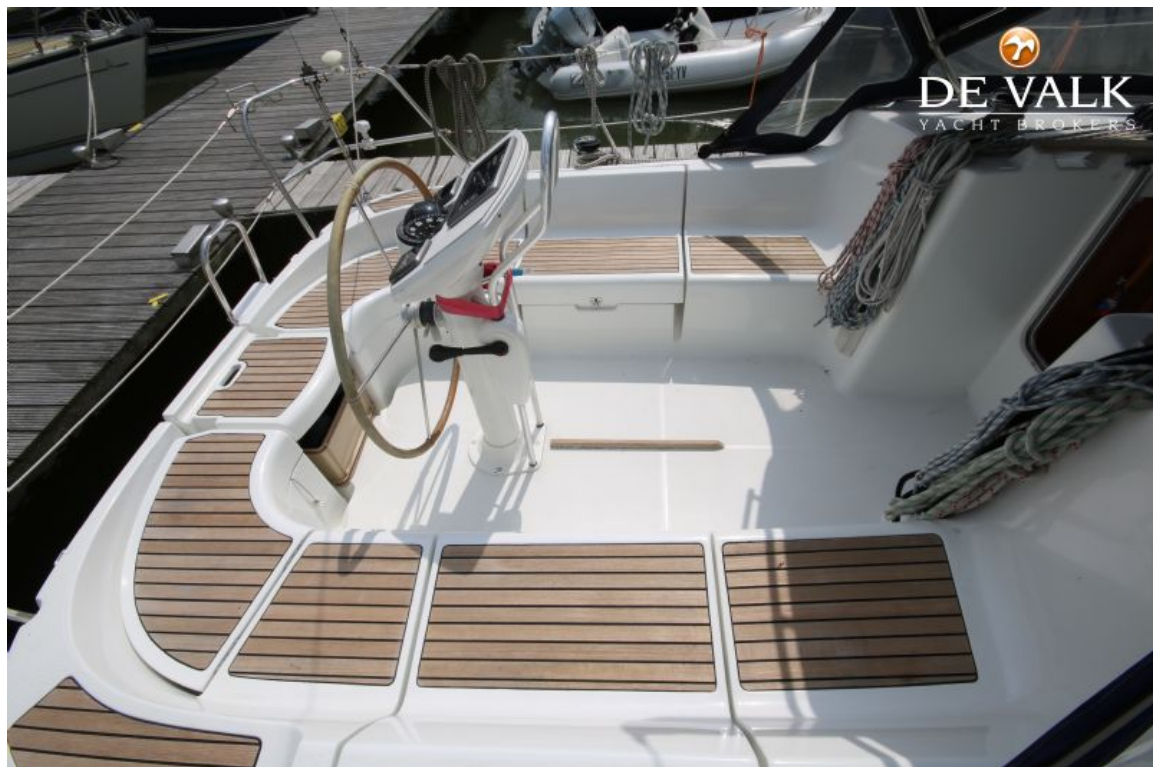


# JEANNEAU SUN ODYSSEY 37





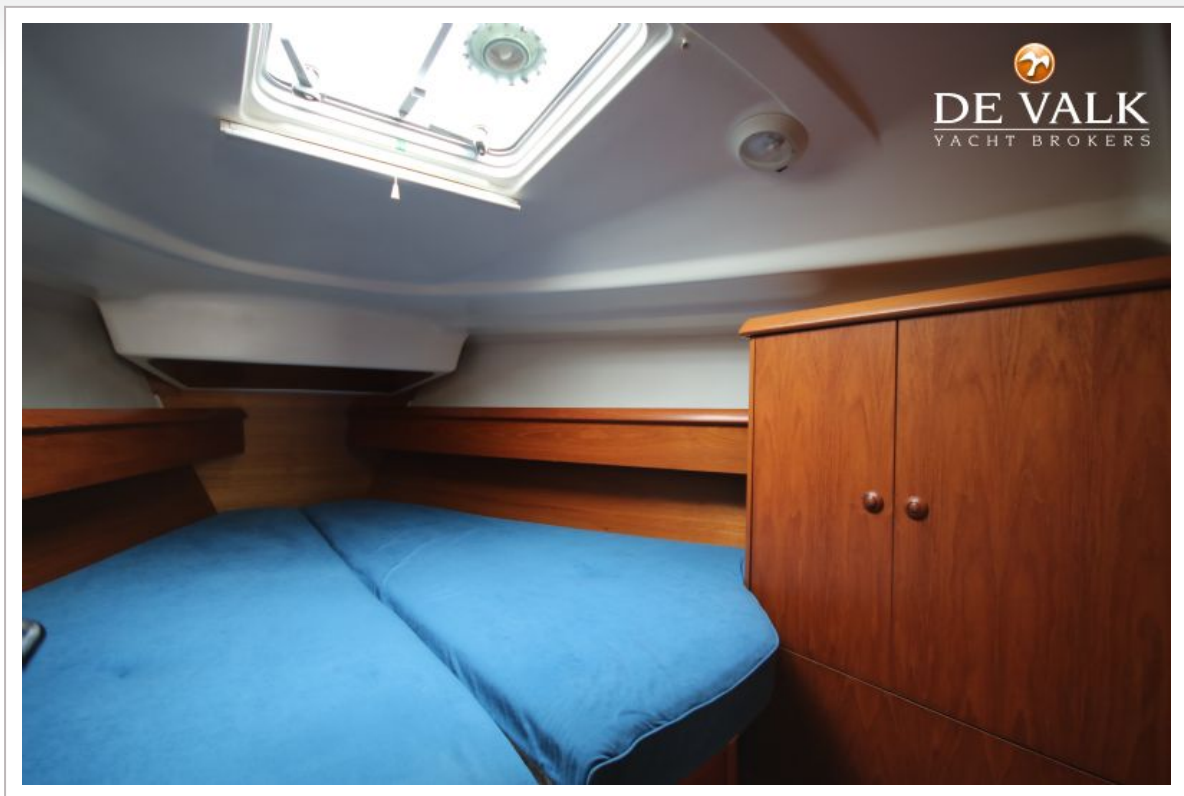
# JEANNEAU SUN ODYSSEY 37



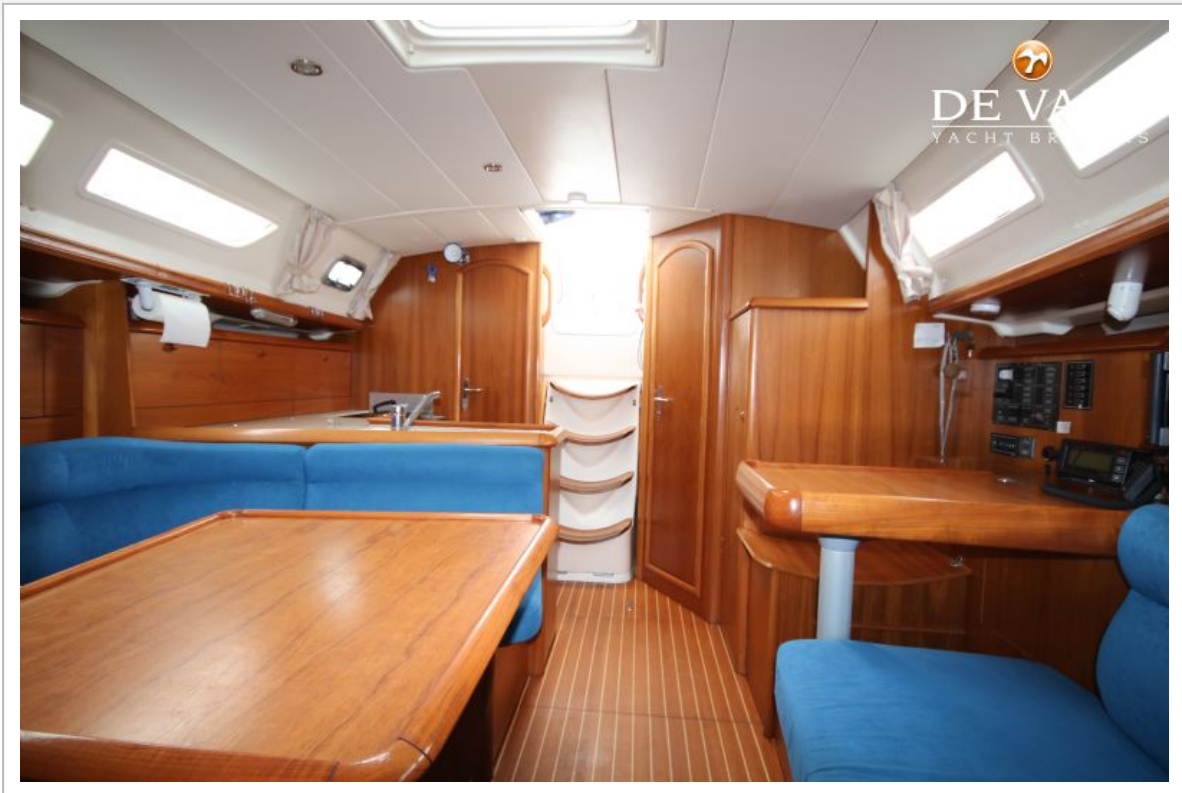
# JEANNEAU SUN ODYSSEY 37







# JEANNEAU SUN ODYSSEY 37







# JEANNEAU SUN ODYSSEY 37







