



DE VALK
YACHT BROKERS



BROOM 44



DE VALK
YACHT BROKERS

BROKER'S COMMENTS

Flagship of the well known English shipyard Broom & Sons. A name with heritage and known for their sturdy built "go anywhere" offshore motor yachts. Excellent three cabin layout with two bathrooms and large deck salon. She easily accommodates six persons so ideal for the family and/or cruising with friends. Large owners cabin aft with ensuite facilities. Outside good access on deck and a cozy aft cockpit with storage and ample seating area. With windows and radar arch collapsed she can also visit the French Canals with 3,50 mtr headway.

Marc Weijenberg

SPECIFICATIONS

Dimensions	13.61 x 4.60 x 1.22 (m)	Builder	Broom & Sons Ltd
Built	1992	Cabins	3
Material	GRP	Berths	6
Engine(s)	2 x Volvo Penta TAMD71B diesel	Hp/Kw	2 x 380.00 (hp), 279.30 (kw)
Asking price	sold (VAT)	Lying	at sales office

CONTACT

Sales office	De Valk Sint Annaland B.V.	Telephone	+31 166 601 000
Address	Koelhuisweg 4 4697 RM Sint Annaland NL	E-mail	sintannaland@devalk.nl

DISCLAIMER

These particulars are given in good faith as supplied but cannot be guaranteed.



GENERAL

Model	BROOM 44
Type	motor yacht
LOA (m)	13,61
Beam (m)	4,60
Draft (m)	1,22
Air draft (m)	3,50
Headroom (m)	1,95
Year built	1992
Builder	Broom & Sons Ltd
Country	Great Britain
Designer	John Bennett
Displacement (t)	18
Hull material	GRP
Hull colour	white
Hull shape	deep-V
Superstructure material	GRP
Rubbing strake	stainless steel
Deck material	GRP
Deck finish	non-skid moulded in
Cockpit deck finish	teak
Window frame	stainless steel
Window material	tempered glass
Deckhatch	yes
Portholes	stainless steel
Radar arch	collapsible
Fuel tank (litre)	stainless steel 2 x 863
Freshwater tank (litre)	stainless steel 580
Blackwater tank (litre)	stainless steel 100
Blackwater tank extraction	deck extraction + uw line
Outside helm position	hydraulic Hynautic



More info on hull

Extra info

Sturdy grp construction

headway with arch and windows up; 5,41 mtr headway with arch down with windows up 3,85 mtr

ACCOMMODATION

Cabins	3
Berths	6
Interior	teak
Floor	teak and holly
Aft deck	yes
Deck saloon	yes
Headroom saloon (m)	1,95
Heating	calorgas ducted hot air Eberspaecher
Aft Cabin	yes
Dinette	yes
Galley	yes
Countertop	plastic
Sink	emaille
Cooker	calor gas Rosieres 220v +
Oven	220v+gas Princess
Extractor	yes
Microwave	Neff
Fridge	+ Engel 24v with freezer Engel 24v
Hot water system	220V + engine
Water pressure system	electrical
Owners cabin	double bed Aft/achter/hinten
Bed length (m)	2,05 x 1,45
Wardrobe	hanging/drawers/shelves
Bathroom	en suite I
Toilet	en suite
Toilet system	electric



Wash basin	at the toilet
Shower	en suite
Guest cabin 1	double bed Forward/voor/vorne
Bed length (m)	1,95 x 1,45
Wardrobe	hanging/drawers/shelves
Bathroom	en suite II
Toilet	en suite
Toilet system	electric
Wash basin	at the toilet
Shower	en suite
Guest cabin 2	twin single
Bed length (m)	2,00/1,80 x 0,80
Wardrobe	hanging and drawers

MACHINERY

No of engines	2
Make	Volvo Penta
Type	TAMD71B
HP	380,00
kW	279,30
Fuel	diesel
Year installed	1992
Maximum speed (kn)	20
Cruising speed (kn)	7
Consumption (l/hr)	14 ltr /uur
Engine hours	2400
Engine cooling system	freshwater heat exchanger
Drive	shaft
Engine controls	bowden cable
Gearbox	TwinDisc
Bowthruster	electric Duco 24v/10hp (2016)



Exhaust	watercooled
Propeller type	fixed
Propeller blades	bronze 4
Propeller shaft material	stainless steel
Shaft lubrication	water
Manual bilge pump	2 x
Electric bilge pump	4 x
Electrical installation	24v/220v
Generator	wet exhaust G&M 10kVa
Start battery	4 x 110amp (2016)
Service battery	4 x 110amp (2016)
Generator battery	1 x 70amp
Battery monitor	yes
Battery charger	Pro-ex 24v/80amp
Diode battery combiners	yes
Shorepower	with cable
Trimtabs	fixed trimtabs Eltrim (Fixed not working)
Extra info	Hourmeters renewed at approx. 2300 hours
Extra info	Fast enough for safe and reliable crossing over sea.

NAVIGATION

Compass	Siva 100
Electric compass	Autohelm ST50
Depth sounder	Autohelm ST50
Log	Autohelm ST50
Fish finder	Furuno
VHF	Cobra F50
Autopilot	Autohelm 7000
Rudder angle indicator	via autopilot
Radar	Raytheon R21X
Plotter	Raymarine C-80



Electronic chart(s) 1 x

EQUIPMENT

Fixed windscreen	collapsable
Sprayhood	yes
Sun awning	yes
Window cover	front windows
Cockpit cushions	yes
Cockpit table	yes
Bathing platform	yes
Boarding ladder	stainless steel
Deck shower	cold water
Anchor	Bruce
Anchor chain	Approx. 20 mtr
Windlass	electrical S&L Anchorman 1200
Capstan	yes
Davits	stainless steel Whittal
Davits controls	manual
Sea railing	stainless steel
Grab rail (superstructure)	stainless steel
Railing side opening gates	with boardingladder 2 x
Pushpit	yes
Pulpit	yes
Lifebuoy	yes
Wiper	with wash 2 x
Window ventilator	yes
Horn	electric
Fenders	yes
Mooring lines	yes
TV	Daewoo
TV receiver	no



Radio-cd player
Fire extinguisher

Defect
out of date



BROOM 44





BROOM 44



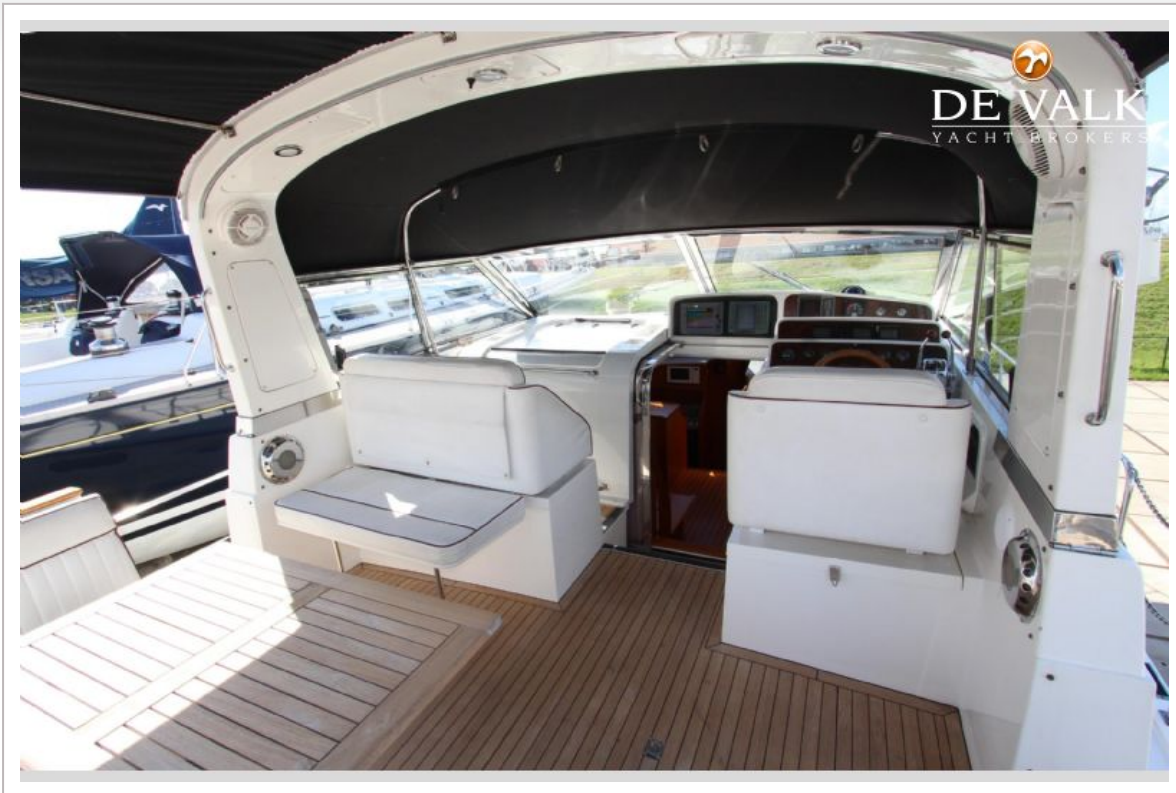
BROOM 44



BROOM 44



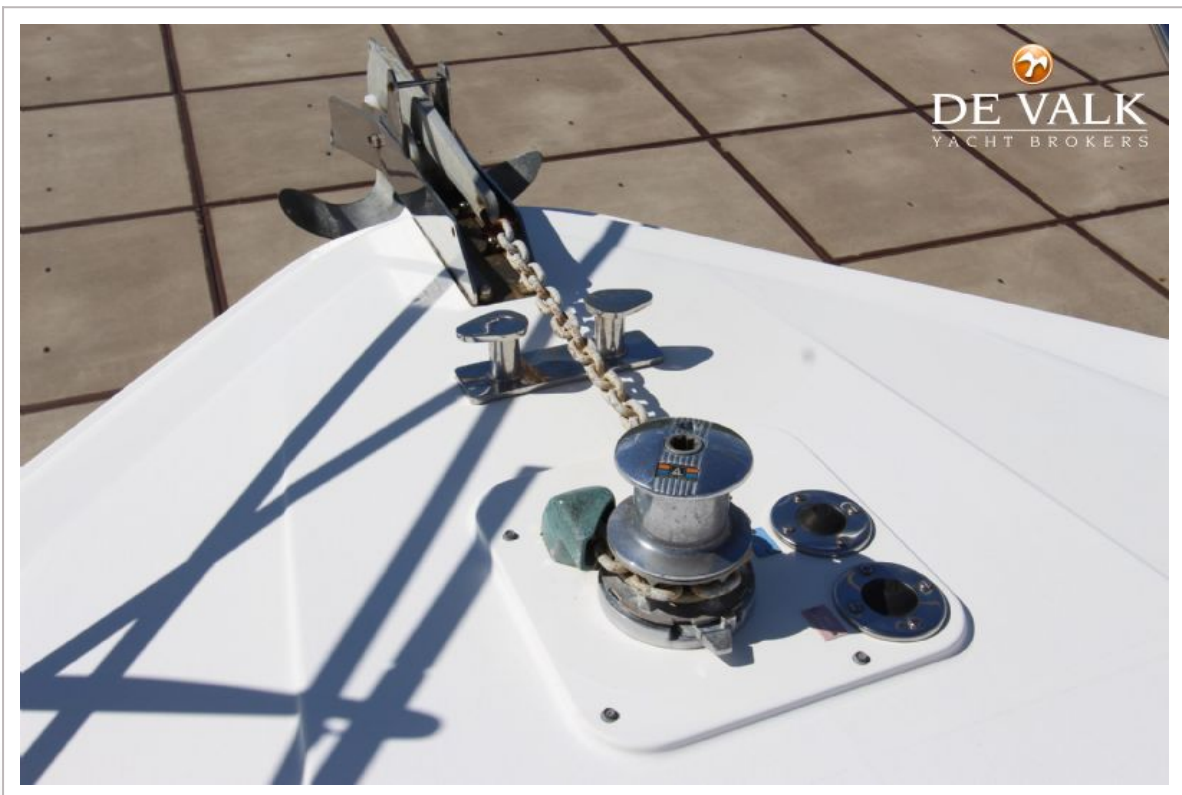
BROOM 44



BROOM 44



BROOM 44



BROOM 44



BROOM 44



BROOM 44



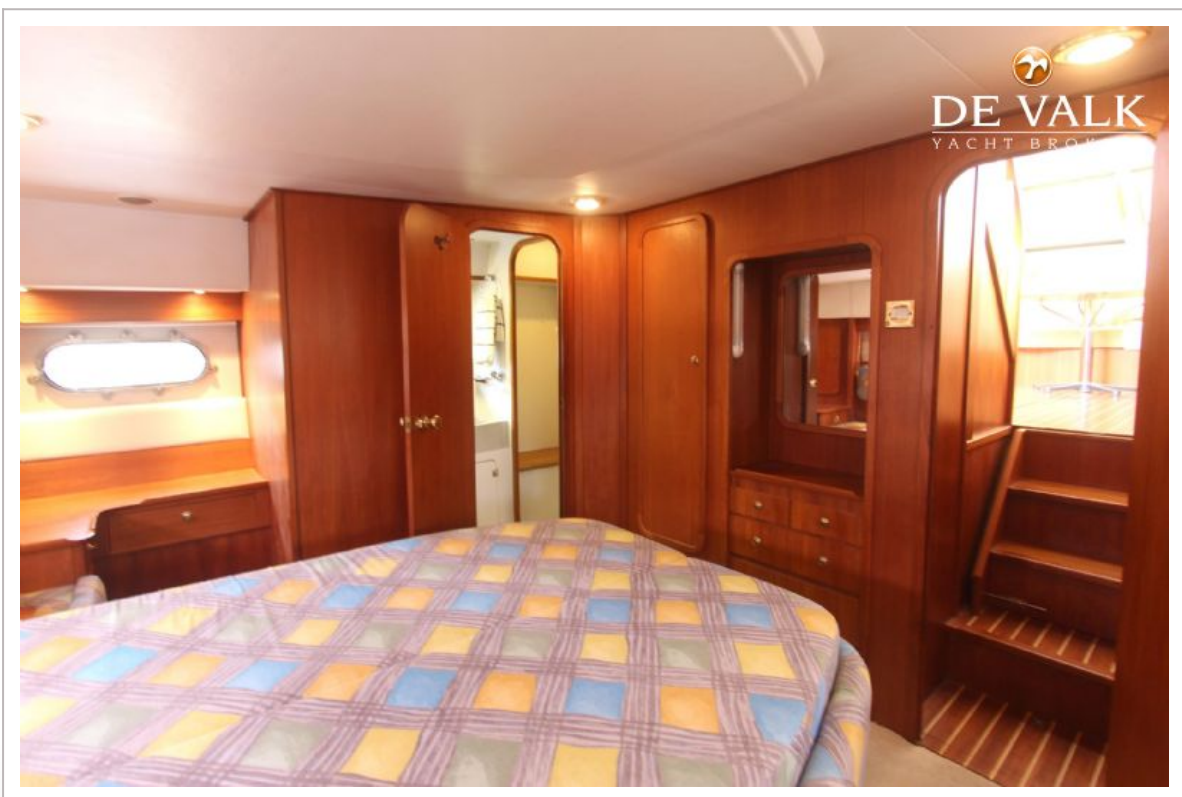
BROOM 44



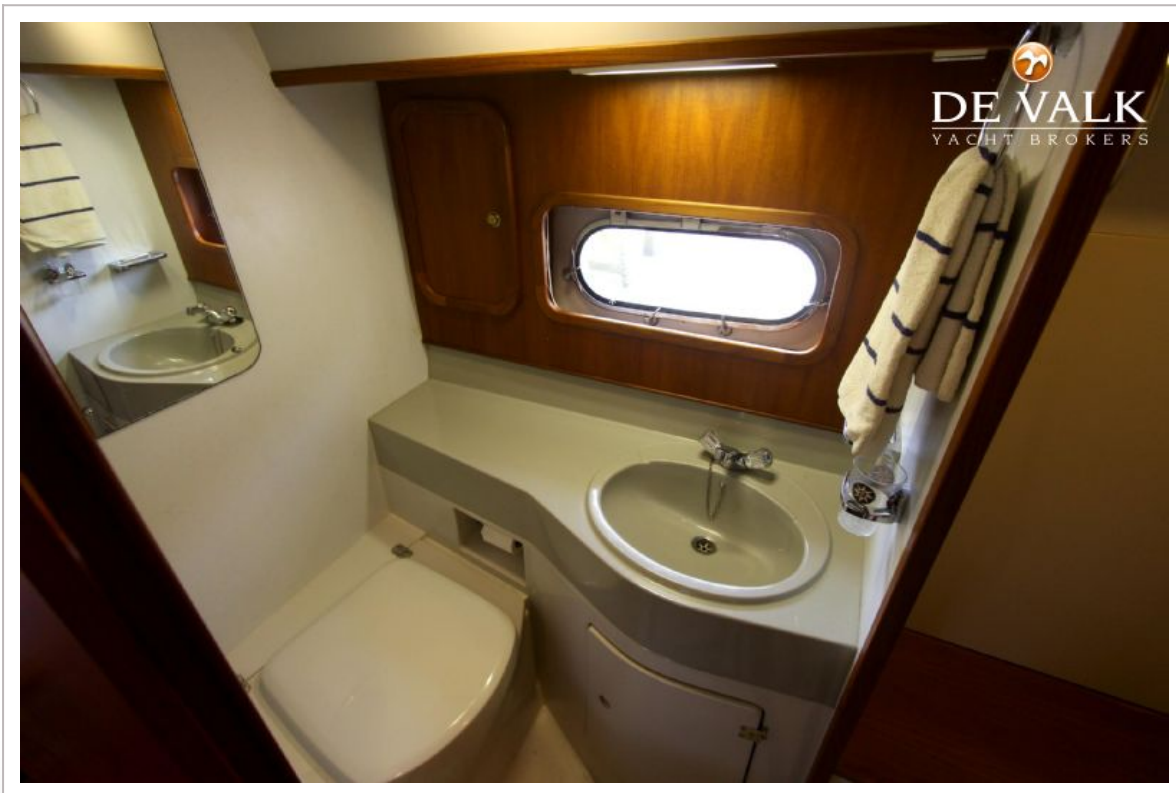
BROOM 44



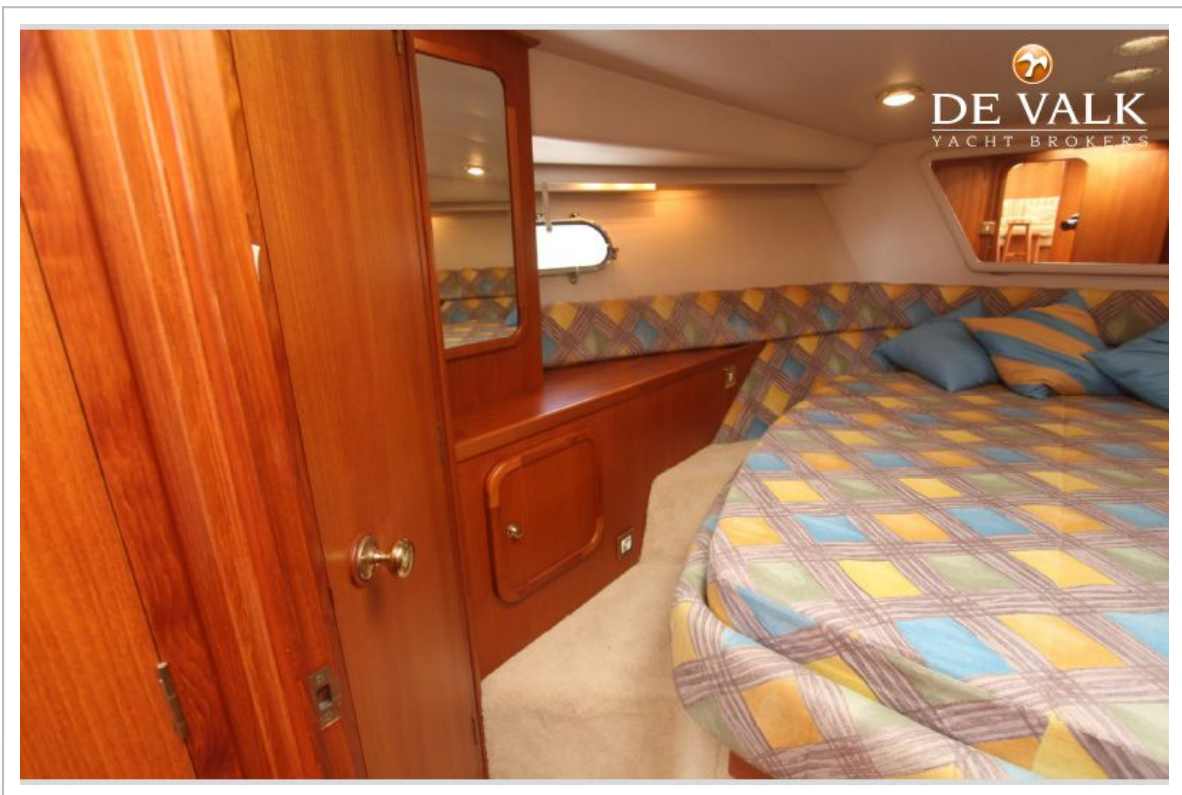
BROOM 44



BROOM 44



BROOM 44



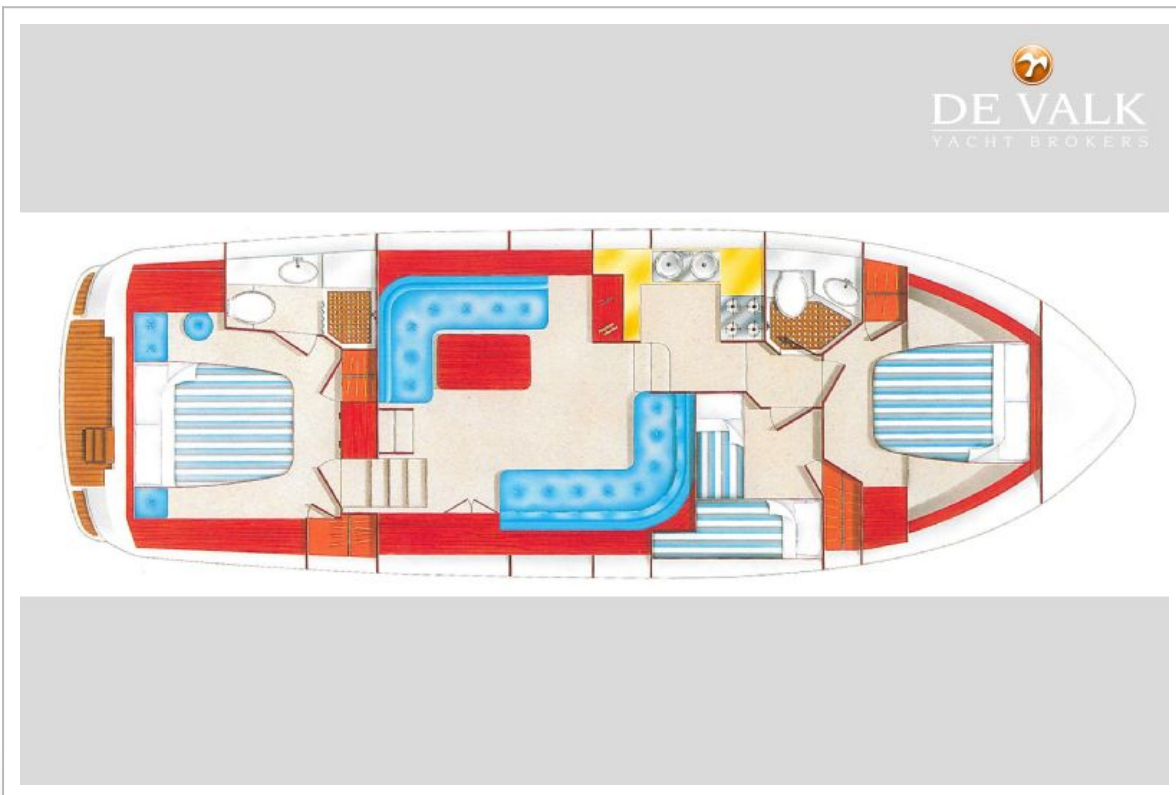
BROOM 44



BROOM 44



BROOM 44



BROOM 44

