



THERMOYACHT SEA SWALLOW 37

BROKER'S COMMENTS

Very charming Colin Archer style steel motorsailer with Dutch heritage. Ample accommodations below decks and a nice decksaloon/wheelhouse with U-shaped settee and panoramic view. Her interior is classic styled with light panels and mahogany trim/carpentry. She has large tanks for ample range and lots of stowage space throughout. With her full furling rig, bow thruster and heavier than standard engine, she is a joy to handle under sail and power.

Ger Bayens

SPECIFICATIONS

Dimensions	12.80 x 3.75 x 1.60 (m)	Builder	Jachtwerf Therm-o-cal
Built	1995	Cabins	2
Material	Steel	Berths	5
Engine(s)	1 x Volvo Penta TMD 31 diesel	Hp/Kw	100.00 (hp), 73.50 (kw)
Asking price	sold (VAT)	Lying	at sales office

CONTACT

Sales office	De Valk Sint Annaland B.V.	Telephone	+31 (0)166 601 000
Address	Koelhuisweg 4 4697 RM Sint Annaland NL	E-mail	sintannaland@devalk.nl

DISCLAIMER

These particulars are given in good faith as supplied but cannot be guaranteed.



THERMOYACHT SEA SWALLOW 37

GENERAL

Model	THERMOYACHT SEA SWALLOW 37
Type	motorsailer
LOA (m)	12,80
LWL (m)	10,00
Beam (m)	3,75
Draft (m)	1,60
Air draft (m)	18,00
Headroom (m)	2,00
Year built	1995
Builder	Jachtwerf Therm-o-cal
Country	The Netherlands
Designer	Stout & Heineman Yachtdesign
Displacement (t)	15
Ballast (tonnes)	2,85
Hull material	steel
Hull colour	green
Hull thickness (mm)	5 mm
Hull shape	multi hard chine
Keel type	long keel
Superstructure material	steel 4 mm
Superstructure (mm)	5mm
Rubbing strake	rubber
Deck material	steel
Deck finish	non-skid paint
Cockpit deck finish	non-skid paint
Dorades	2
Window frame	aluminium
Window material	glass 8mm security
Portholes	brass 8mm security glass
Insulation	rockwool



Fuel tank (litre)	stainless steel 450
Level indicator (fuel tank)	yes
Freshwater tank (litre)	stainless steel 650
Level indicator (freshwater)	yes
Blackwater tank (litre)	stainless steel 85
Blackwater tank extraction	deck extraction
Inside helm position	hydraulic
Outside helm position	hydraulic Whitlock
Emergency tiller	yes
More info on paintwork	uwbody new epoxy coating in 2015
Extra info	Multiple portholes and windows can be opened.
Extra info	Length overall 13,50 mtr

ACCOMMODATION

Cabins	2
Berths	5
Interior	mahogany
Floor	wood
Aft deck	yes
Pilot house/deck saloon	yes
Headroom saloon (m)	1,97
Heating	diesel ducted hot air Eberspracher Airtronic D4 (2012)
Aft Cabin	Headroom 1.86m
Dinette	with panoramic view
Opening door to cockpit	yes
Galley	Headroom 1.87m
Countertop	plastic
Sink	2 x
Cooker	petroleum Taylor 2 burner
Oven	Taylor
Microwave/oven combi	Moulinex 220v



THERMOYACHT SEA SWALLOW 37

Fridge	Isotherm 12v (defect)
Hot water system	220V + engine
Water pressure system	electrical
Owners cabin	double bed Aft/achter/hinten
Bed length (m)	2,00 x 1,40
Wardrobe	hanging and shelves
Bathroom	shared
Toilet	shared Baby Blake
Toilet system	manual
Wash basin	in the bathroom
Shower	shared
Bath tub	yes
Extra info	Headroom 1.86m
Guest cabin 1	v-bed
Bed length (m)	1,90 x 0,70
Wardrobe	hanging and shelves
Bathroom	
Extra info	Headroom 1.87m
Extra info	Upholstery has been partially renewed in 2012

MACHINERY

No of engines	1
Make	Volvo Penta
Type	TMD 31
HP	100,00
kW	73,50
Fuel	diesel
Year installed	1995
Year of overhaul	2015
Maximum speed (kn)	7,5
Cruising speed (kn)	6,5



Consumption (l/hr)	4
Engine hours	1100
Engine cooling system	freshwater heat exchanger
Drive	shaft
Engine controls	bowden cable 2015
Gearbox	mechanical
Bowthruster	electric Vetus 130kgf
Exhaust	watercooled
Thrust bearing	yes
Propeller type	fixed
Propeller blades	4
Propeller shaft material	stainless steel
Shaft lubrication	grease
Electric bilge pump	yes
Electrical installation	12/220v
Start battery	100amp (2015)
Service battery	3 x 180amp (2015)
Battery charger	Phillipi 12v/45amp
Shorepower	with cable

NAVIGATION

Compass	Whitlock Polaris
Electric compass	via autopilot
Depth sounder/log	Autohelm ST50 Multi
Windset	Autohelm ST50
VHF	Standard Horizon GX2000 (2016)
Autopilot	+ inside repeater Autohelm ST7000
Rudder angle indicator	via autopilot
GPS	Autohelm ST50
Radar/plotter	+ 2kW radome Raymarine C80
AIS transponder	Raymarine AIS650 Class B (2016)



EQUIPMENT

Cockpit table	yes
Bathing platform	yes
Boarding ladder	stainless steel
Gangway	yes
Anchor	Pool
Anchor chain	50 mtr
Windlass	electrical Vetus
Deck wash	yes
Sea railing	stainless steel
Grab rail (superstructure)	wood
Railing side opening gates	yes
Pushpit	yes
Pulpit	yes
Wiper	2 x
Horn	electric
Fenders	yes
Mooring lines	yes
Radio-cd player	JVC
Speakers in salon	yes
Clock - barometer	yes

RIGGING

Rigging	ketch-cutter
Standing rigging	wire
Brand mast	Brasker
Material mast	aluminium coated Wood-print
Mainsail	furling Schokker (2016)
Genoa furler	Bamar
Staysail	furling Schokker (2016)
Staysail furler	Bamar



Trysail	(1995)
Reefing System	main in-mast furling
Boomvang	tackle
Primary sheet winch	2 x Lewmar 44CST
Secondary sheet winch	4 x Lewmar 30CST
Halyard winches	1 x Lewmar 16CST
Multifunctional winches	1 x Lewmar 44CST
Extra info	spare set sails (1995)



THERMOYACHT SEA SWALLOW 37





THERMOYACHT SEA SWALLOW 37



THERMOYACHT SEA SWALLOW 37



THERMOYACHT SEA SWALLOW 37









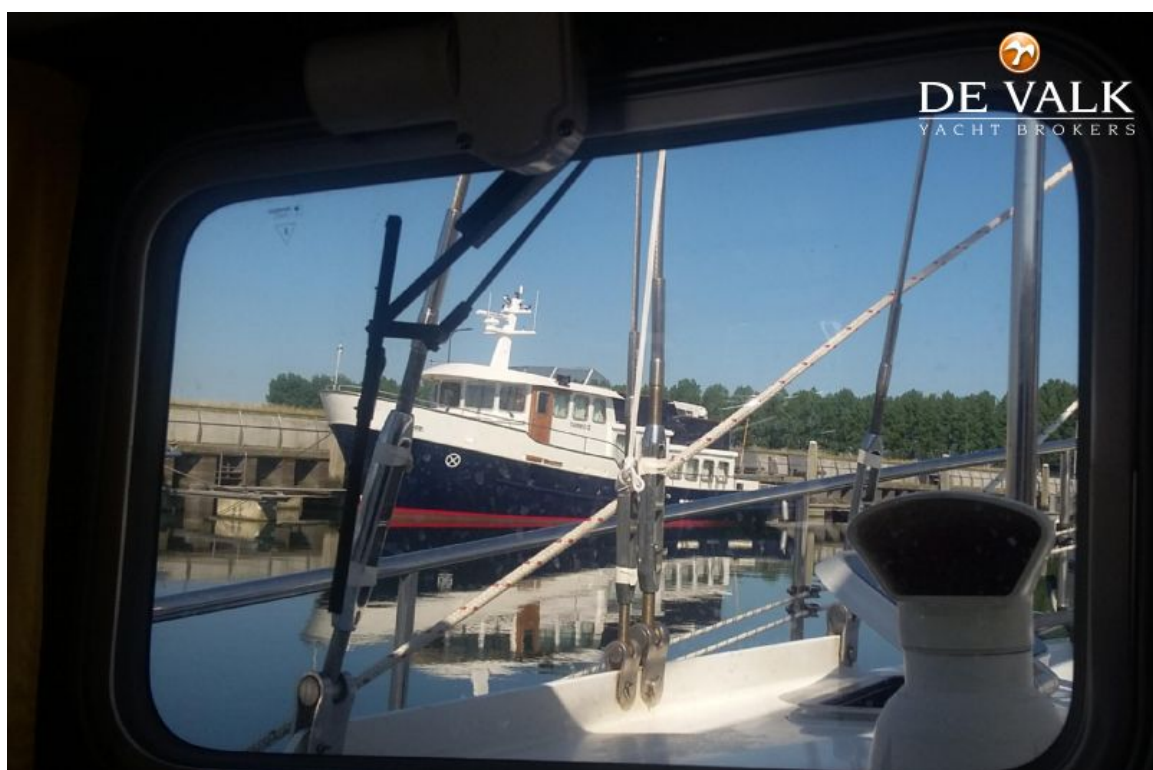
THERMOYACHT SEA SWALLOW 37



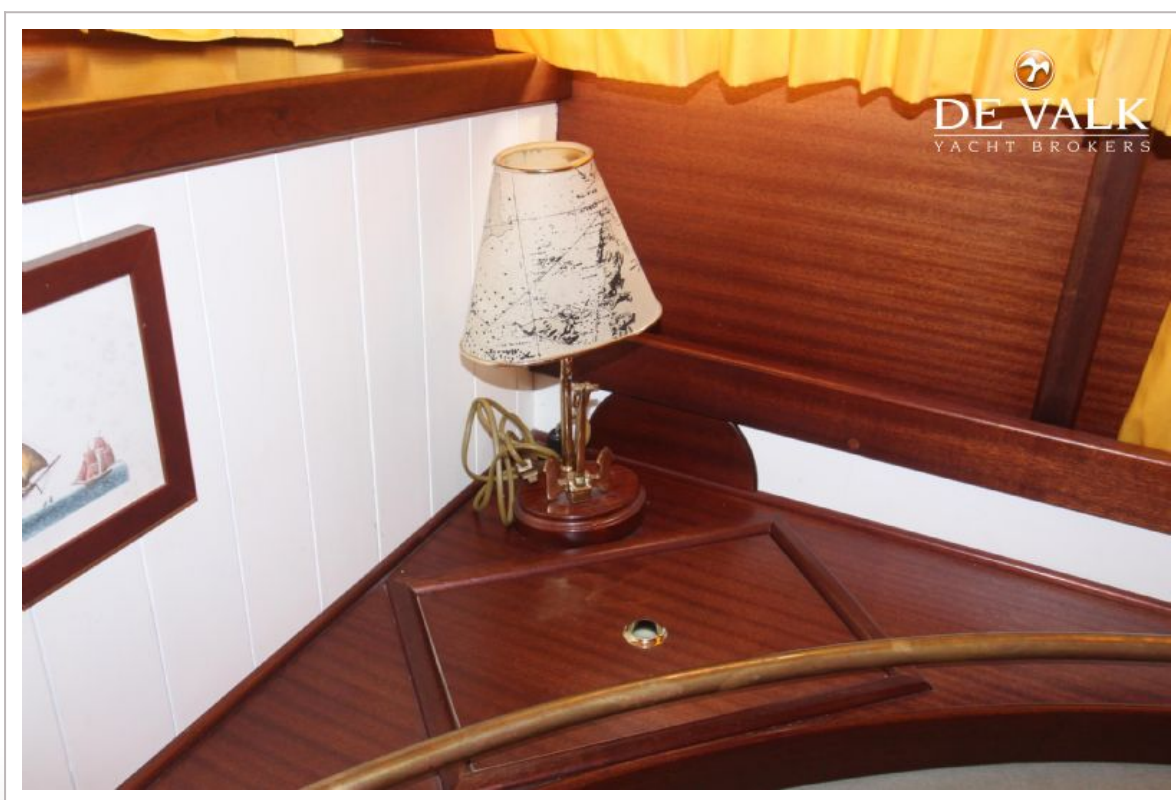
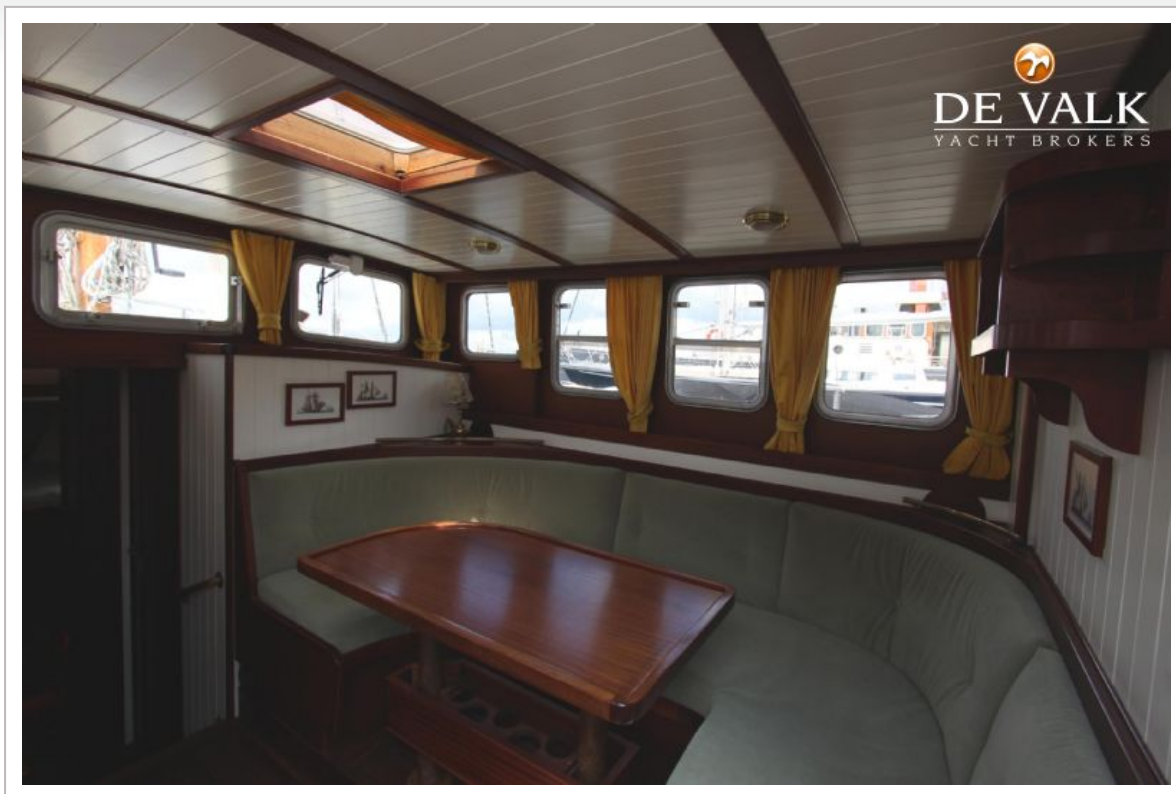
THERMOYACHT SEA SWALLOW 37



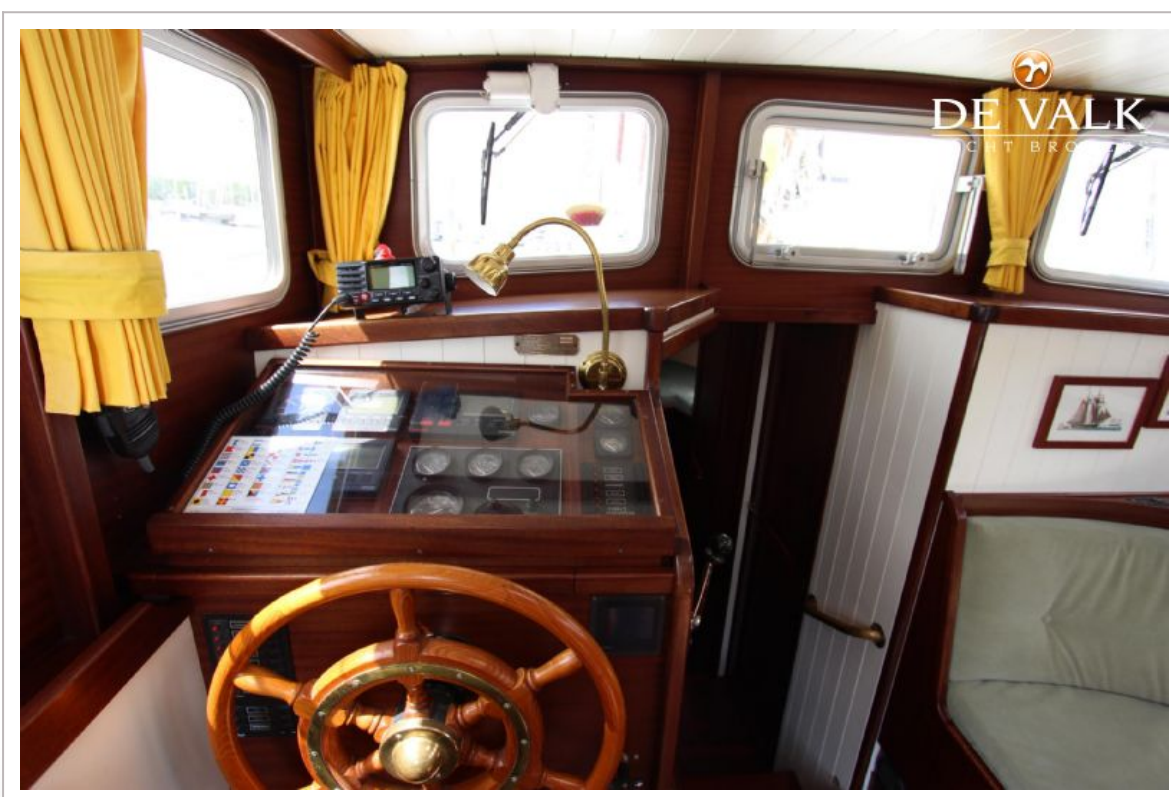
THERMOYACHT SEA SWALLOW 37



THERMOYACHT SEA SWALLOW 37



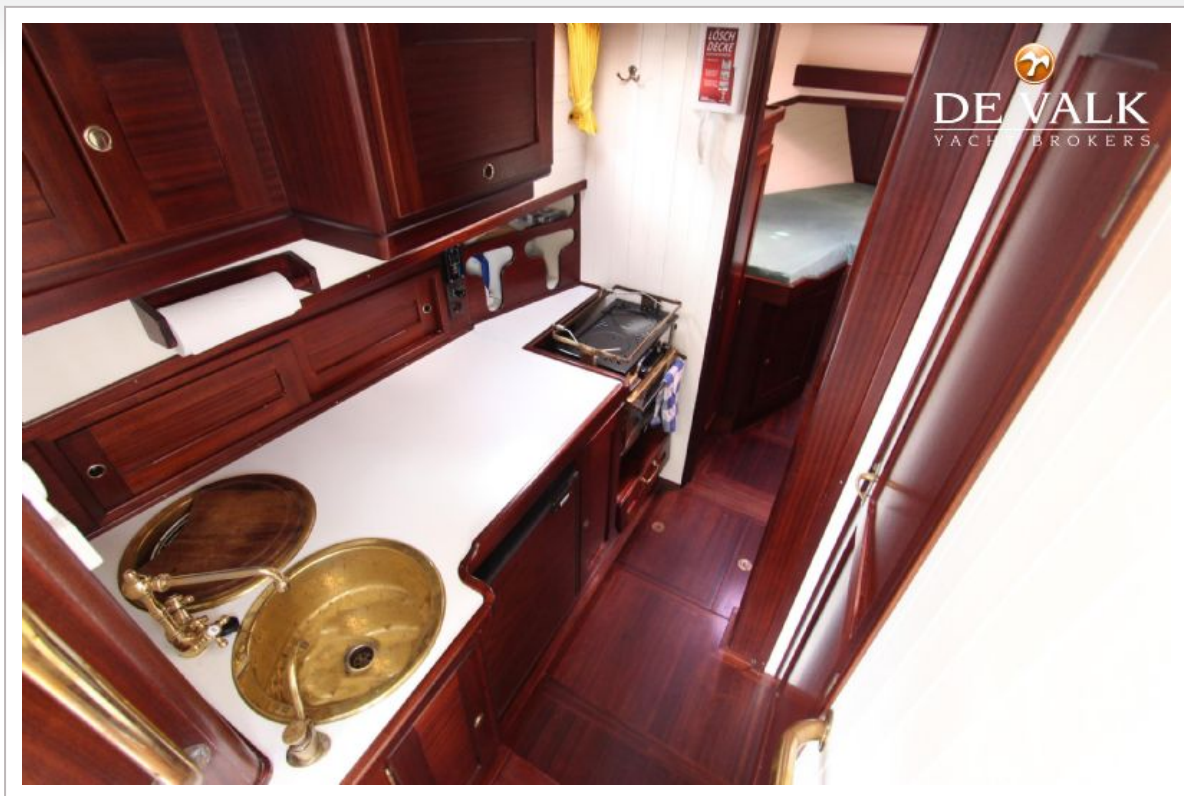
THERMOYACHT SEA SWALLOW 37



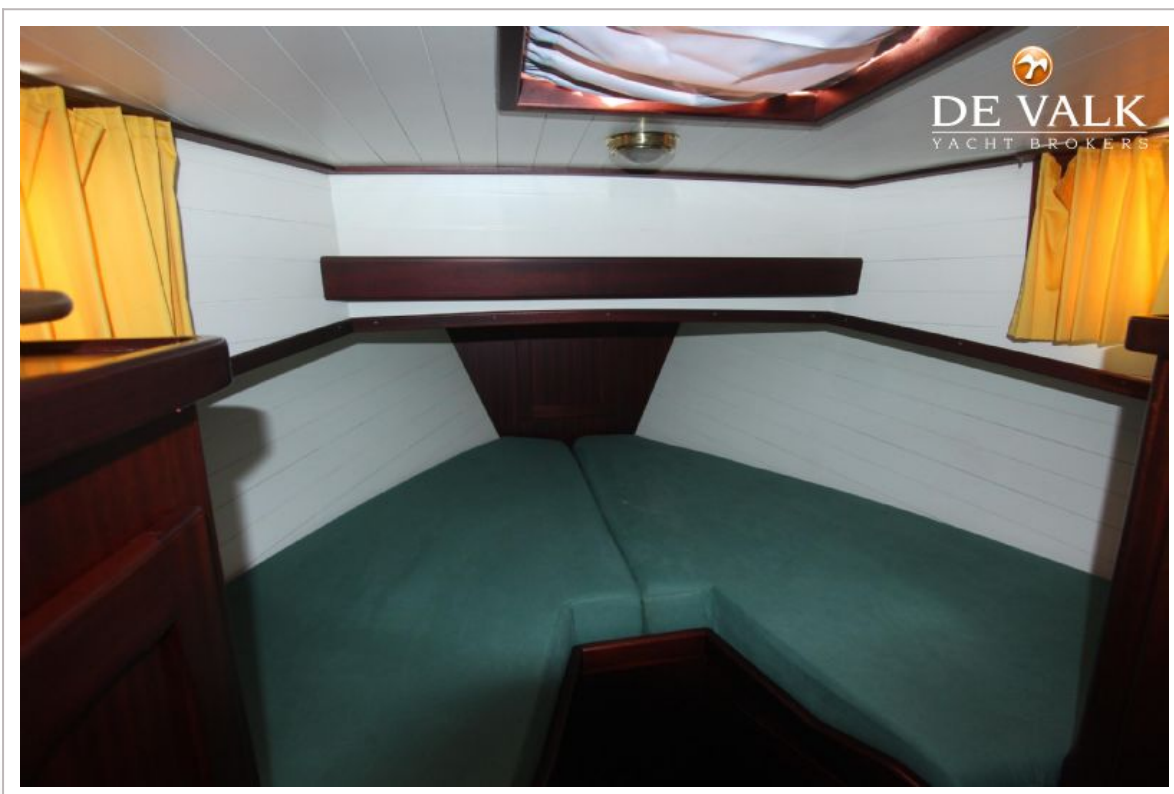
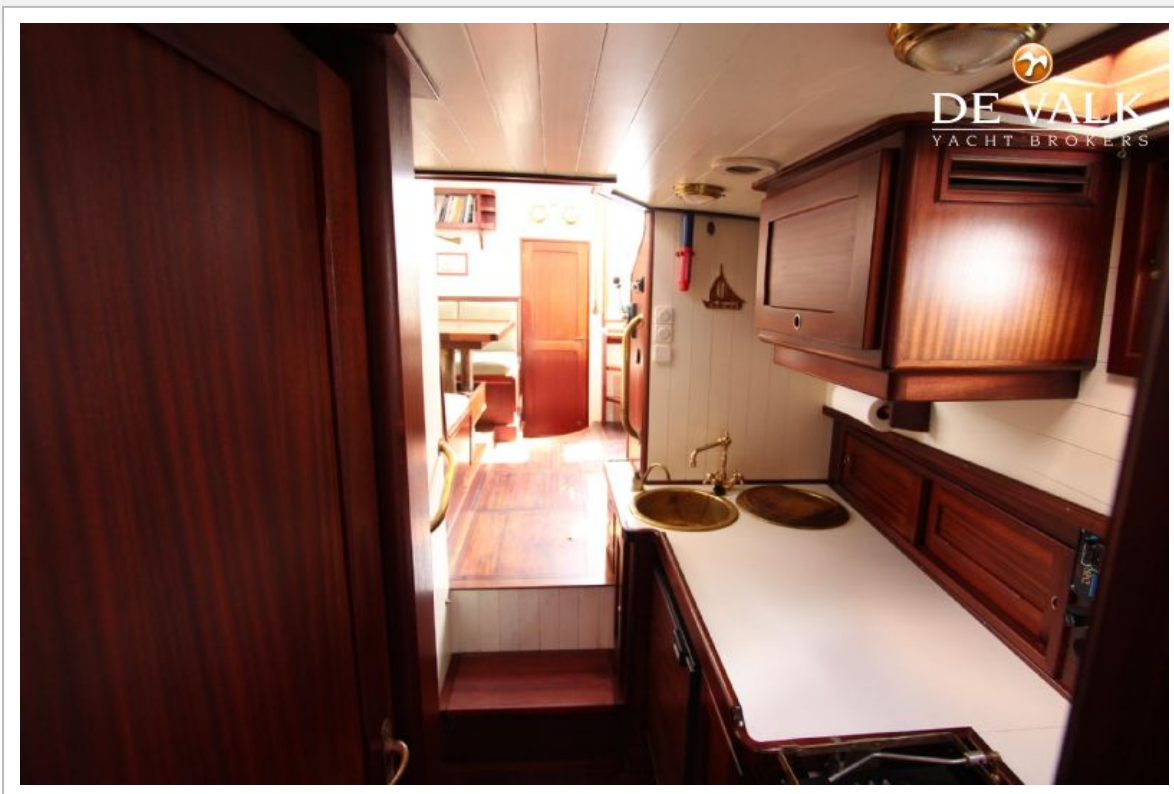
THERMOYACHT SEA SWALLOW 37

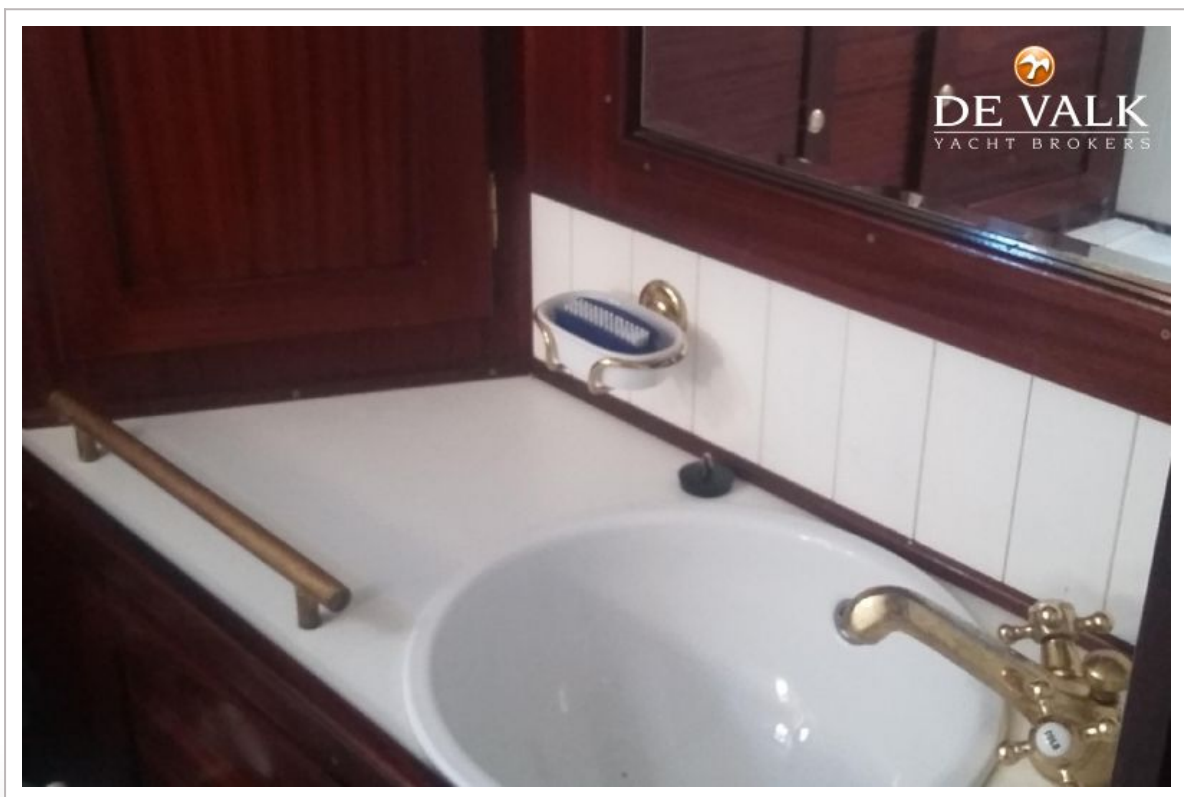
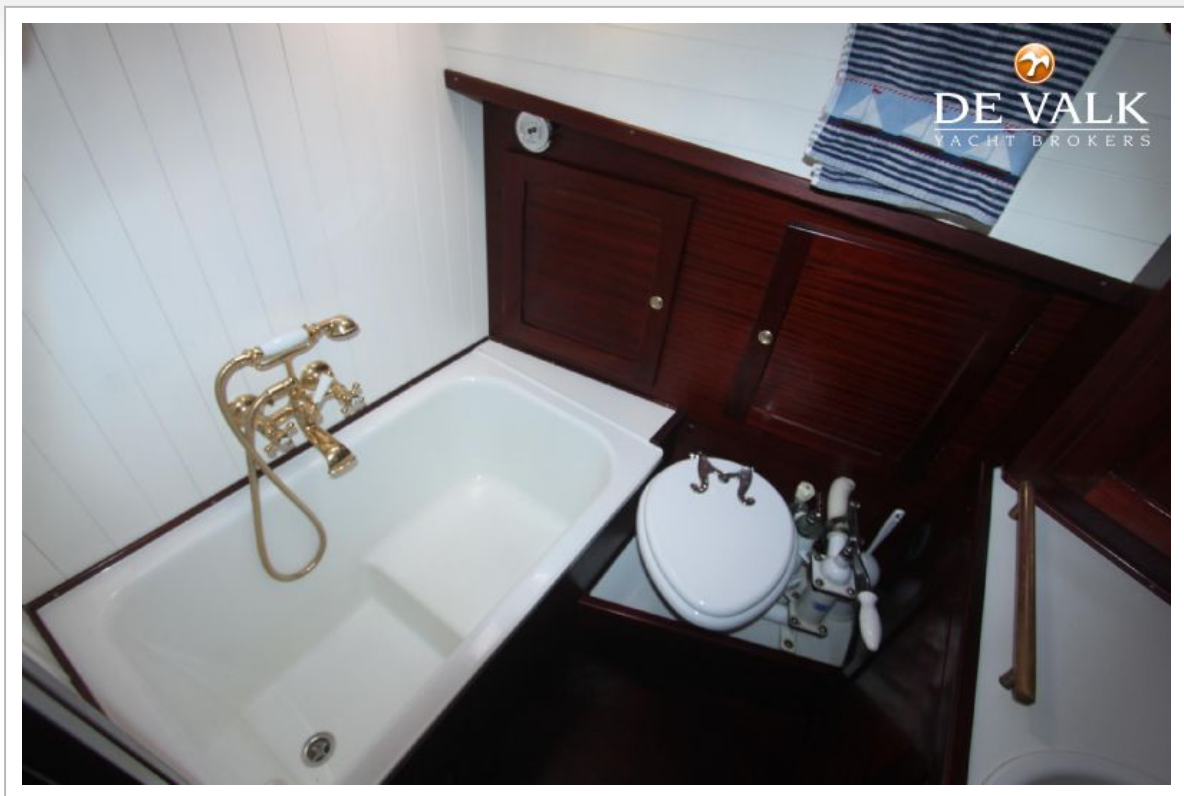


THERMOYACHT SEA SWALLOW 37

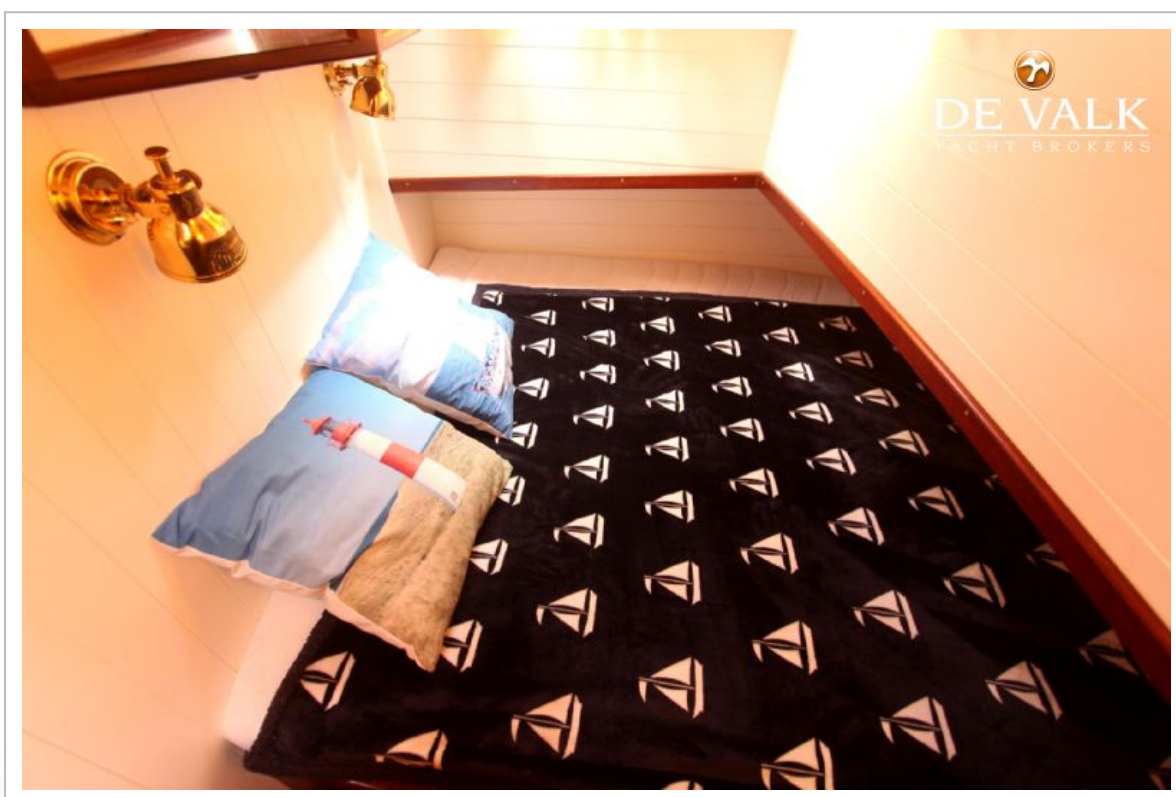
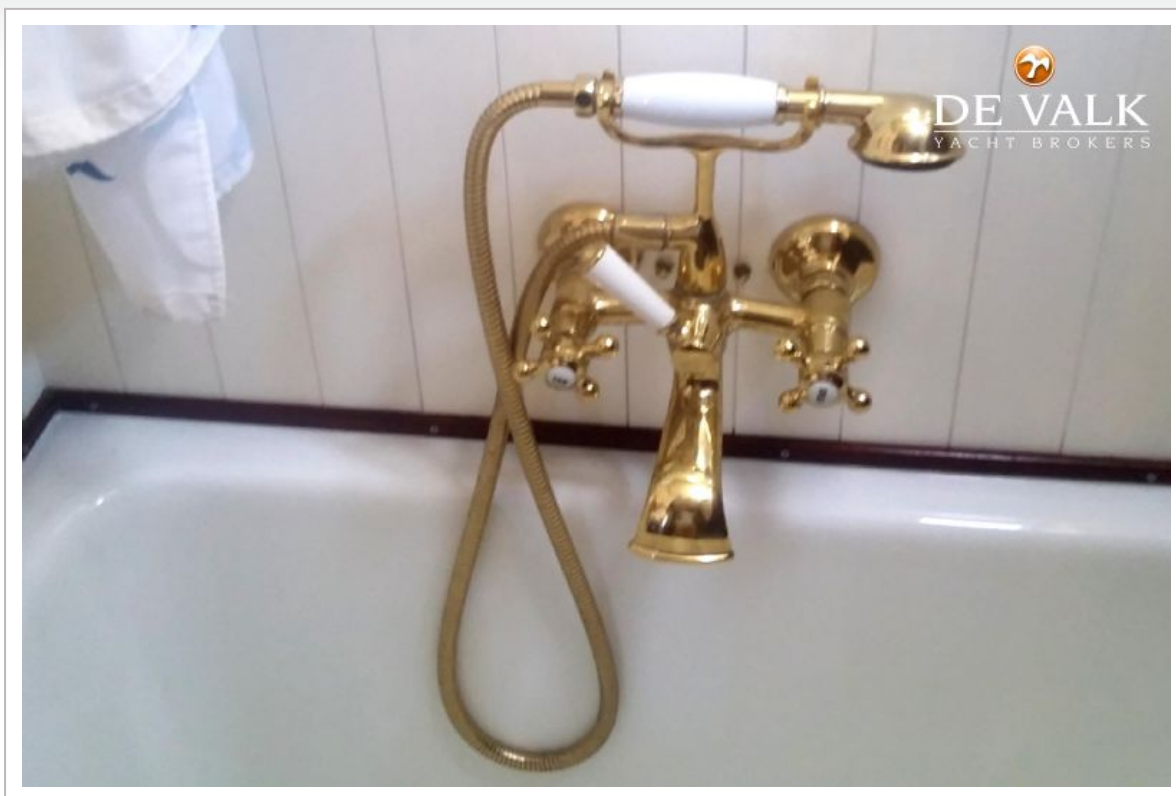


THERMOYACHT SEA SWALLOW 37

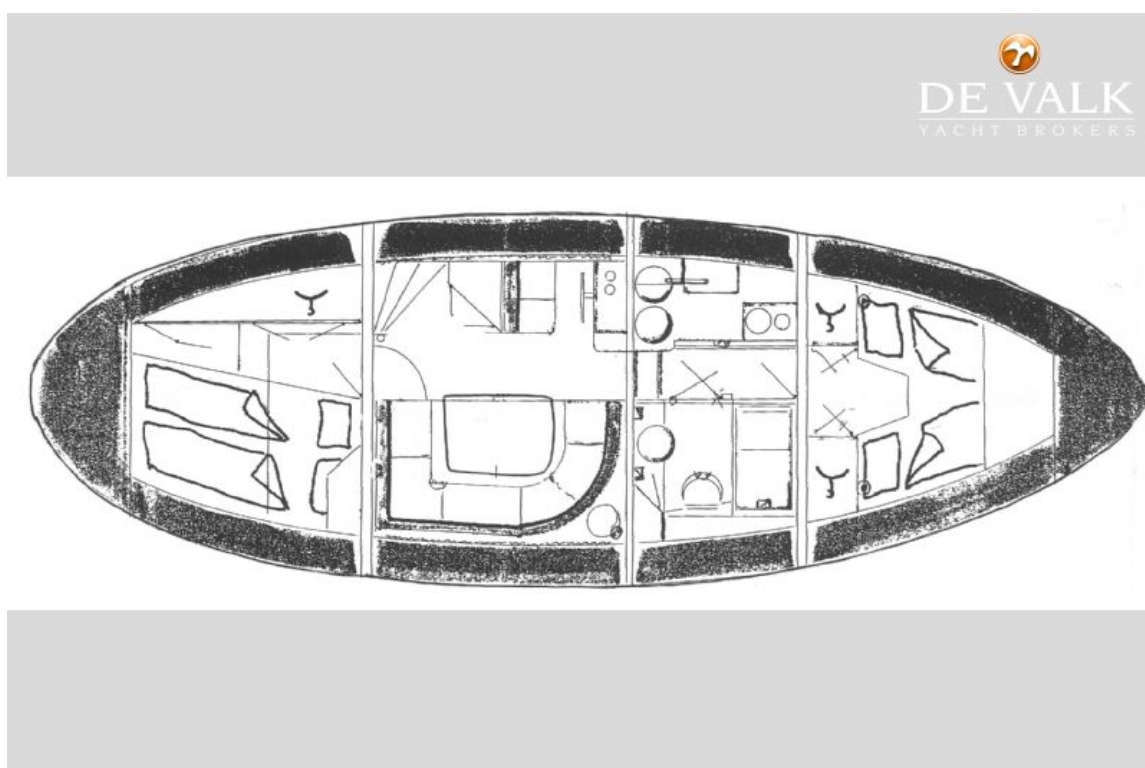




THERMOYACHT SEA SWALLOW 37



THERMOYACHT SEA SWALLOW 37



THERMOYACHT SEA SWALLOW 37

