



GRAND BANKS 43 EASTBAY EX



GRAND BANKS 43 EASTBAY EX

BROKER'S COMMENTS

Built by the famous and appreciated Grand Banks Yachts and designed in partnership with C. R. Hunt. The very seaworthy Eastbay 43 shows a beautiful combination of style, comfort and safety. The teak finish creates a warm atmosphere in the accommodation. The steering position of this Grand Banks 43, equipped with nice instruments, offers a good look around position. The Grand Banks Eastbay 43 Express can be visited in the covered sales marina of De Valk Loosdrecht.

Koen Mulder

SPECIFICATIONS

Dimensions	13.11 x 4.01 x 1.10 (m)	Builder	American Marine
Built	2002	Cabins	2
Material	GRP	Berths	4
Engine(s)	2 x Cummins 6CTA 8,3-M3 diesel	Hp/Kw	2 x 450.00 (hp), 330.00 (kw)
Asking price	sold (VAT)	Lying	at sales office

CONTACT

Sales office	De Valk Loosdrecht B.V.	Telephone	+31 (0)35 582 90 30
Address	't Breukeleveense Meentje 6 1231LM Loosdrecht / Wijdmeren NL	E-mail	loosdrecht@devalk.nl

DISCLAIMER

These particulars are given in good faith as supplied but cannot be guaranteed.



GENERAL

Model	GRAND BANKS 43 EASTBAY EX
Type	motor yacht
LOA (m)	13,11
LWL (m)	12,09
Beam (m)	4,01
Draft (m)	1,10
Air draft (m)	4,05
Headroom (m)	2,00
Year built	2002
Builder	American Marine
Country	Singapore
Designer	C.R. Hunt
Displacement (t)	13,6
CE norm	B
Hull material	GRP
Hull colour	blue
Hull shape	deep-V
Superstructure material	GRP
Rubbing strake	stainless steel
Deck material	GRP
Deck finish	teak
Cockpit deck finish	teak
Window frame	stainless steel
Window material	glass
Portholes	stainless steel
Radar arch	non collapsible
Fuel tank (litre)	1700
Freshwater tank (litre)	359
Wheel steering	hydraulic
Inside helm position	yes



ACCOMMODATION

Cabins	2
Berths	4
Interior	teak
Floor	teak and holly
Open cockpit	yes
Saloon	yes
Headroom saloon (m)	2,00
Heating	diesel ducted hot air 2x Webasto
Air-conditioning	2x Webasto
Galley	yes
Countertop	yes
Sink	yes
Cooker	ceramic Gaggenau
Microwave/oven combi	Samsung
Fridge	yes
Hot water system	220V/engine/heating
Water pressure system	electrical
Owners cabin	French bed
Wardrobe	hanging and drawers
Bathroom	shared
Toilet	shared
Shower	shared
Guest cabin 1	bunk bed
Wardrobe	drawers and shelves

MACHINERY

No of engines	2
Make	Cummins
Type	6CTA 8,3-M3
HP	450



GRAND BANKS 43 EASTBAY EX

kW	330,00
Fuel	diesel
Year installed	2002
Maximum speed (kn)	30,00
Cruising speed (kn)	16,00
Engine hours	1040
Engine cooling system	freshwater heat exchanger
Drive	shaft
Gearbox	hydraulic ZF
Bowthruster	electric Sidepower
Propeller shaft material	stainless steel
Manual bilge pump	1x
Electric bilge pump	3x Rule 2000
Electrical installation	12/230 Volt
Generator	Onan
Batteries	yes
Battery charger	Mastervolt
Inverter	Mastervolt
Shorepower	yes
Watermaker	Spectra Catalina
Trimtabs	Bennet

NAVIGATION

Compass	Ritchie
Depth sounder	yes
Log	yes
VHF	Icom IC-M423
Autopilot	Simrad AP 48
Rudder angle indicator	VDO
Radar	Simrad 4G
Plotter/GPS	2x Simrad 12 EVO 2



Radar/GPS	2x Simrad 12 EVO 2
AIS receiver	Simrad

EQUIPMENT

Cockpit cover	yes
Cockpit cushions	yes
Cockpit table	yes
Bathing platform	yes
Boarding ladder	yes
Transom door	yes
Gangway	yes
Deck shower	yes
Anchor	yes
Anchor chain	yes
Deck wash	yes
Dinghy	yes
Davits	stainless steel
Sea railing	stainless steel
Grab rail (superstructure)	stainless steel
Life raft	Inspection needed
Wiper	yes
Horn	yes





GRAND BANKS 43 EASTBAY EX



GRAND BANKS 43 EASTBAY EX



GRAND BANKS 43 EASTBAY EX

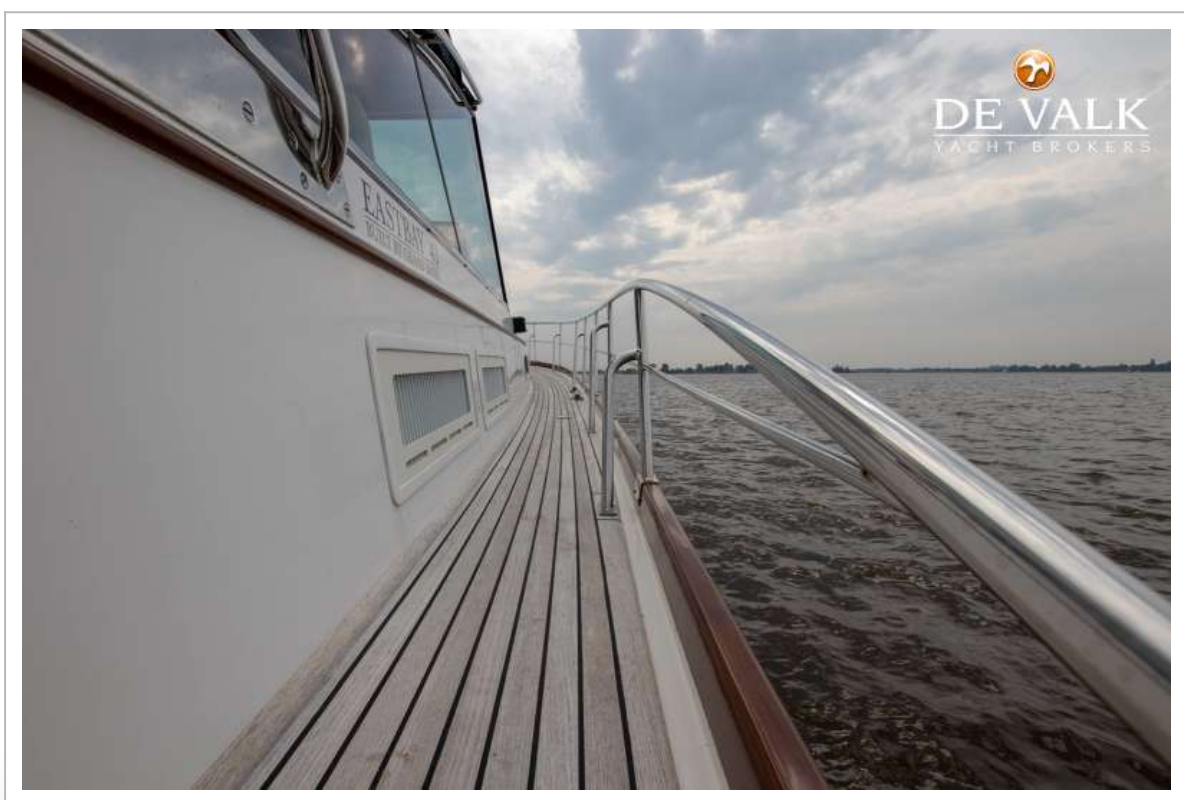


GRAND BANKS 43 EASTBAY EX





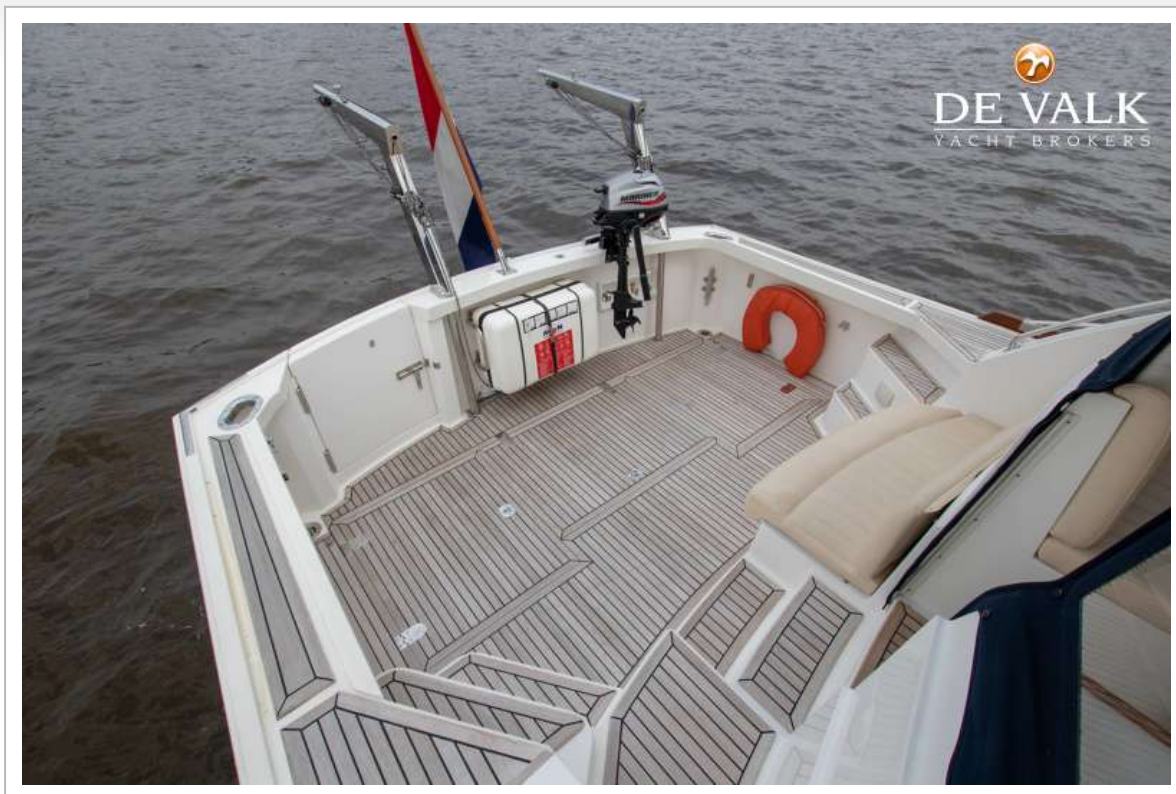
GRAND BANKS 43 EASTBAY EX



GRAND BANKS 43 EASTBAY EX



GRAND BANKS 43 EASTBAY EX



GRAND BANKS 43 EASTBAY EX



GRAND BANKS 43 EASTBAY EX



GRAND BANKS 43 EASTBAY EX



GRAND BANKS 43 EASTBAY EX



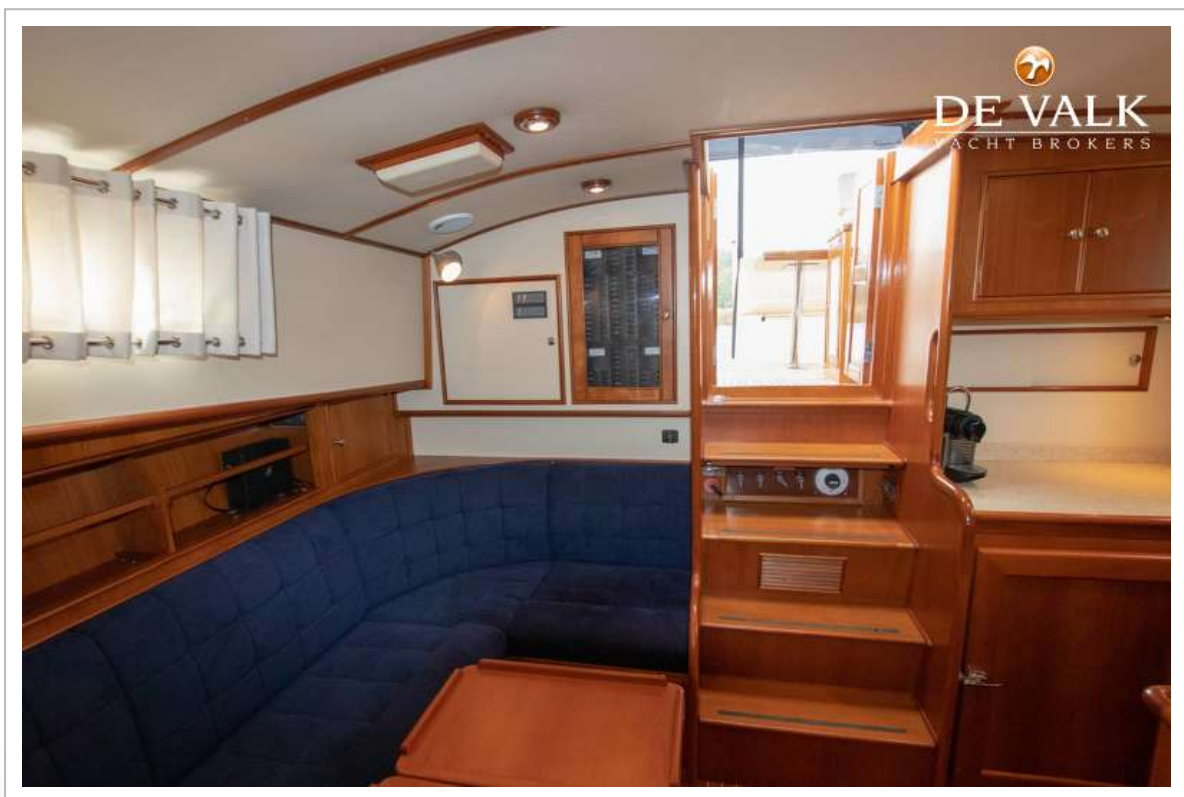
GRAND BANKS 43 EASTBAY EX



GRAND BANKS 43 EASTBAY EX



GRAND BANKS 43 EASTBAY EX

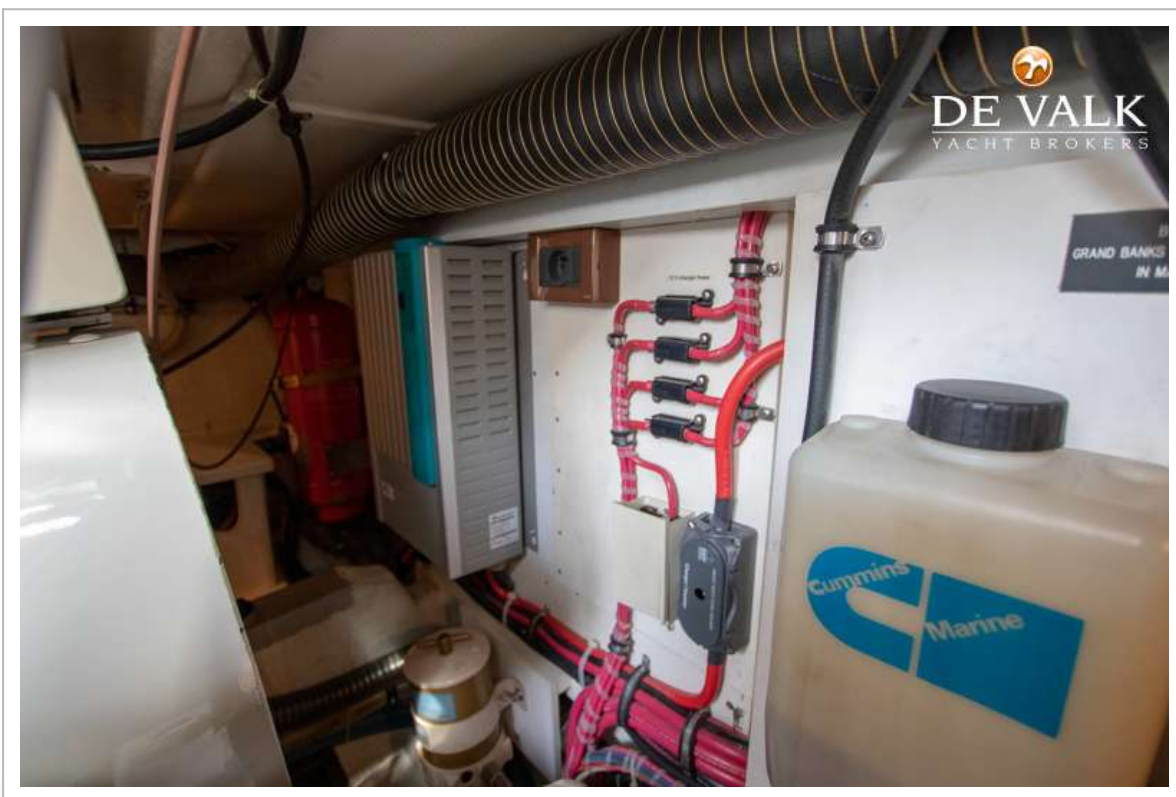
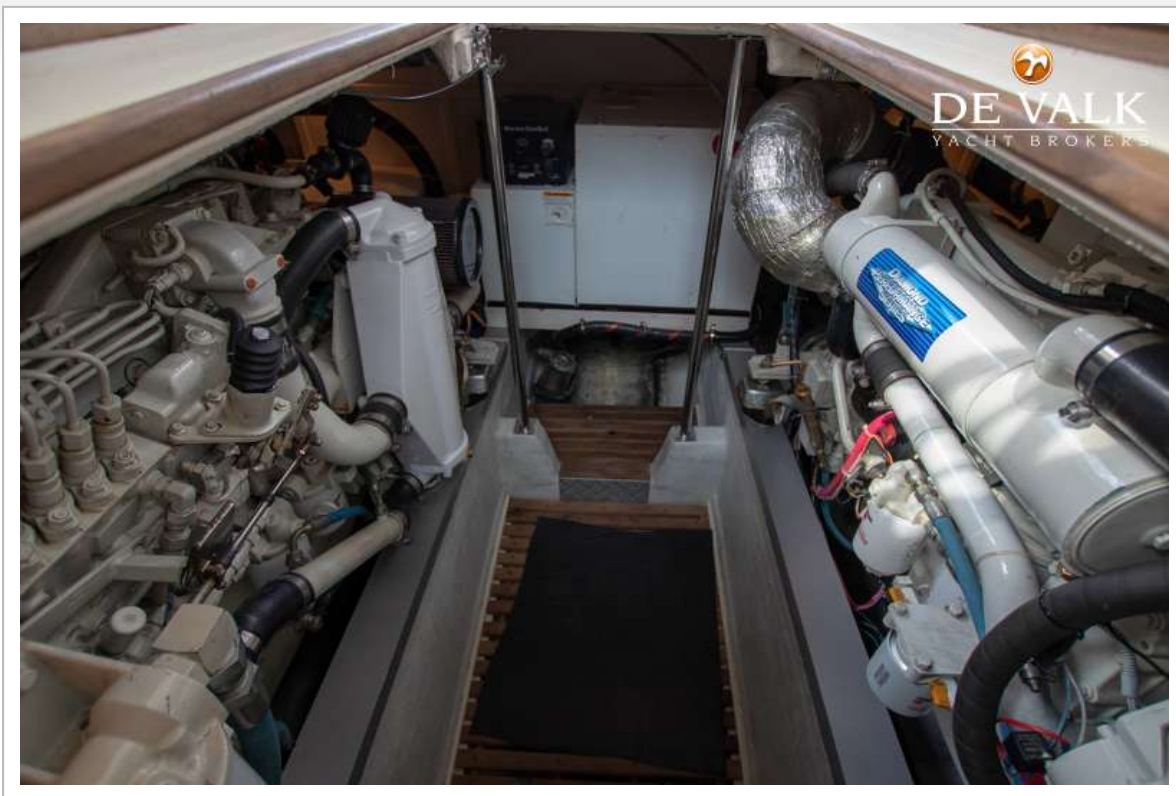


GRAND BANKS 43 EASTBAY EX





GRAND BANKS 43 EASTBAY EX



GRAND BANKS 43 EASTBAY EX



