



STENTOR 1500 FRANCE EDITION



STENTOR 1500 FRANCE EDITION

BROKER'S COMMENTS

The Stentor 1500 France Edition is a beautiful design by Vripcack Naval Architects. This Stentor 1500 France Edition called "Danisa" is equipped with three cabins that offer five berths, also the "Danisa" is equipped with air conditioning, central heating, washing machine, dishwasher, etc... The 225 hp faithful Perkins diesel engine has an average consumption of approx. 7.5l./hour. The technical equipment consists of a 16hp hydraulic bow and stern which, together with the electronic engine control, can be remotely controlled by means of a "Dockmate" system.

Jochem Heijermans

SPECIFICATIONS

Dimensions	14.99 x 4.65 x 1.35 (m)	Builder	Stentor Yachts BV - Sneek
Built	2004	Cabins	3
Material	Steel	Berths	5
Engine(s)	1 x Perkins M225TI diesel	Hp/Kw	225.00 (hp), 165.38 (kw)
Asking price	sold (VAT)	Lying	elsewhere / Not at sales office

CONTACT

Sales office	De Valk Belgium	Telephone	+32 586 80 218
Address	1401 PT Nieuwpoort BE	E-mail	belgium@devalk.nl

DISCLAIMER

These particulars are given in good faith as supplied but cannot be guaranteed.



STENTOR 1500 FRANCE EDITION

GENERAL

Model	STENTOR 1500 FRANCE EDITION
Type	motor yacht
LOA (m)	14,99
Beam (m)	4,65
Draft (m)	1,35
Air draft (m)	4,60
Air draft min (m)	3,40
Year built	2004
Builder	Stentor Yachts BV - Sneek
Country	The Netherlands
Designer	Vripack Naval Architects - Sneek
Displacement (t)	32
CE norm	A
Hull material	steel
Hull colour	brown
Hull shape	multi hard chine
Superstructure material	steel
Rubbing strake	aluminum
Deck material	steel With chequer plates
Deck finish	paint
Superstructure deck finish	paint
Cockpit deck finish	teak
Antifouling (year)	2020 Sigma
Dorades	yes
Window frame	aluminium
Window material	double glazing 8mm + 6mm
Deckhatch	yes
Portholes	aluminium
Insulation	rockwool
Mast can be lowered	hydraulic



STENTOR 1500 FRANCE EDITION

Fuel tank (litre)	steel 2500
Fuel tank 2 (litre)	steel 2500
Level indicator (fuel tank)	Gauge glass
Fuel daytank (litre)	steel 100
Freshwater tank (litre)	stainless steel 2x 1250
Level indicator (freshwater)	yes
Blackwater tank (litre)	stainless steel 225
Level indicator (blackwater)	yes
Blackwater tank extraction	deck extraction + pump
Greywater tank (litre)	stainless steel 500
Level indicator (greywater)	yes
Wheel steering	hydraulic
Inside helm position	yes
Outside helm position	hydraulic
Emergency tiller	yes
More info on hull	Alexseal paint system handled (2016)
More info on paintwork	superstructure 2 comp. Awlgrip (2016)
Extra info	Underwater ship sandblasted (2016)

ACCOMMODATION

Cabins	3
Berths	5
Interior	mahogany
Floor	parquet Solid
Aft deck	yes
Saloon	yes
Headroom saloon (m)	2m
Heating	central heating Kabola B12 14KW
Air-conditioning	reverse cycle airco Climma (12000 BTU) + rear (16000 BTU)
Dinette	yes
Opening door to aft deck	yes



STENTOR 1500 FRANCE EDITION

Galley	yes
Countertop	corian
Sink	Corian 2x
Cooker	ceramic
Oven	Candy
Extractor	Etna
Microwave	yes
Fridge	2x
Hot water system	on central heating
Water pressure system	electrical
Dishwasher	Candy
Coffee maker	yes
Owners cabin	French bed
Bed length (m)	2.00 x 1.60
Wardrobe	hanging/drawers/shelves
Bathroom	en suite
Toilet	separate
Toilet system	electric Tecma
Wash basin	at the toilet
Shower	separate
Guest cabin 1	bunk bed
Bed length (m)	2.00 x 1.00
Wardrobe	hanging/drawers/shelves
Bathroom	shared
Toilet	shared
Toilet system	electric
Wash basin	in the bathroom
Shower	shared
Guest cabin 2	single bed
Bed length (m)	2.00 x 0.80
Wardrobe	hanging/drawers/shelves
Washing machine/dryer combi	Candy



Wet bar yes

MACHINERY

No of engines	1
Make	Perkins
Type	M225TI
HP	225
kW	165,38
Fuel	diesel
Year installed	2004
Maximum speed (kn)	9 kn
Cruising speed (kn)	7,5
Consumption (l/hr)	10
Engine hours	2450
Engine cooling system	freshwater heat exchanger
Drive	shaft
Engine controls	electrical ZF + Remote Control (Dockmate)
Gearbox	hydraulic ZF HSW 630 A1 - 2.OR
Bowthruster	hydraulic 16pk (proportional) + Remote Control (Dockmate)
Sternthruster	hydraulic 16pk (proportional) + Remote Control (Dockmate)
Exhaust	watercooled
Thrust bearing	Amartech (2019)
Propeller type	fixed
Propeller blades	5
Propeller shaft material	stainless steel
Shaft lubrication	water
Electric bilge pump	yes
Bilge alarm	yes
Electrical installation	12V/24V/230V
Generator	Onan 11KW
Running hours generator	350



Batteries	yes
Start battery	24V/180Ah
Service battery	24V/690Ah
Generator battery	1x 12V/105Ah
Battery monitor	yes
Battery charger	Mastervolt 24V/75Ah + 24V/25Ah + 12V/15Ah
Inverter	Mastervolt Dakar Sine 24V/3000W
Diode battery combiners	yes
Shorepower	with cable 2x
Insulation transformer	Mastervolt 3KW

NAVIGATION

Electric compass	Raymarine ST60
Depth sounder	Raymarine ST60
Log	Raymarine ST60
Windset	Raymarine ST60
Repeater	Autopilot ST7001 in salon
VHF	Raymarine Ray 230
VHF handheld	Horizon
Autopilot	Raymarine ST6001 Smart Pilot + Remote controll
Rudder angle indicator	Raymarine ST60 Smart Pilot
Radar/GPS/plotter	Raymarine RL80C+
Personal computer	WinGPS Pro (2021)
AIS transponder	Advansea classe B on PC
Navigation lights	yes
Searchlight	Jabsco
Extra info	Raymarine Joystick

EQUIPMENT

Fixed windscreen	yes
Cockpit cover	(2019)



Winter cover	yes
Window cover	(2019)
Cockpit cushions	(2016)
Cockpit table	Teak
Bathing platform	yes
Boarding ladder	stainless steel
Transom door	2x
Bow ladder	yes
Gangway	yes
Deck shower	yes
Anchor	Pool 60kg
Anchor chain	110m
Windlass	hydraulic
Capstan	yes
Deck wash	3 connection points
Dinghy	rigid hull Brig 3.60
Outboard	Suzuki 25pk
Davits	stainless steel
Davits controls	manual
Sea railing	stainless steel
Grab rail (superstructure)	stainless steel
Railing side opening gates	2x
Pushpit	yes
Pulpit	yes
Life raft	container Ocean
Life raft (pers)	6
Last life raft survey	(2017)
Lifejackets	yes
Lifebuoy	2x
Rope cutter	yes
Wiper	3x
Horn	electric



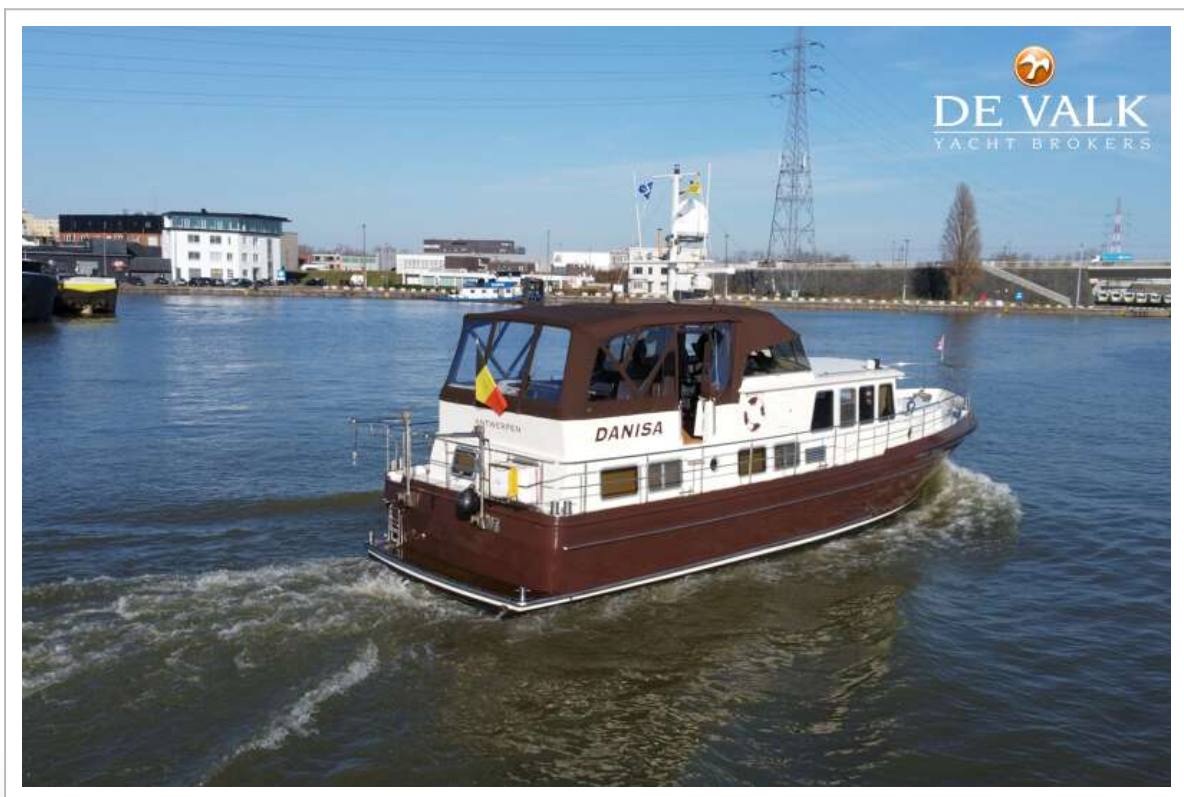
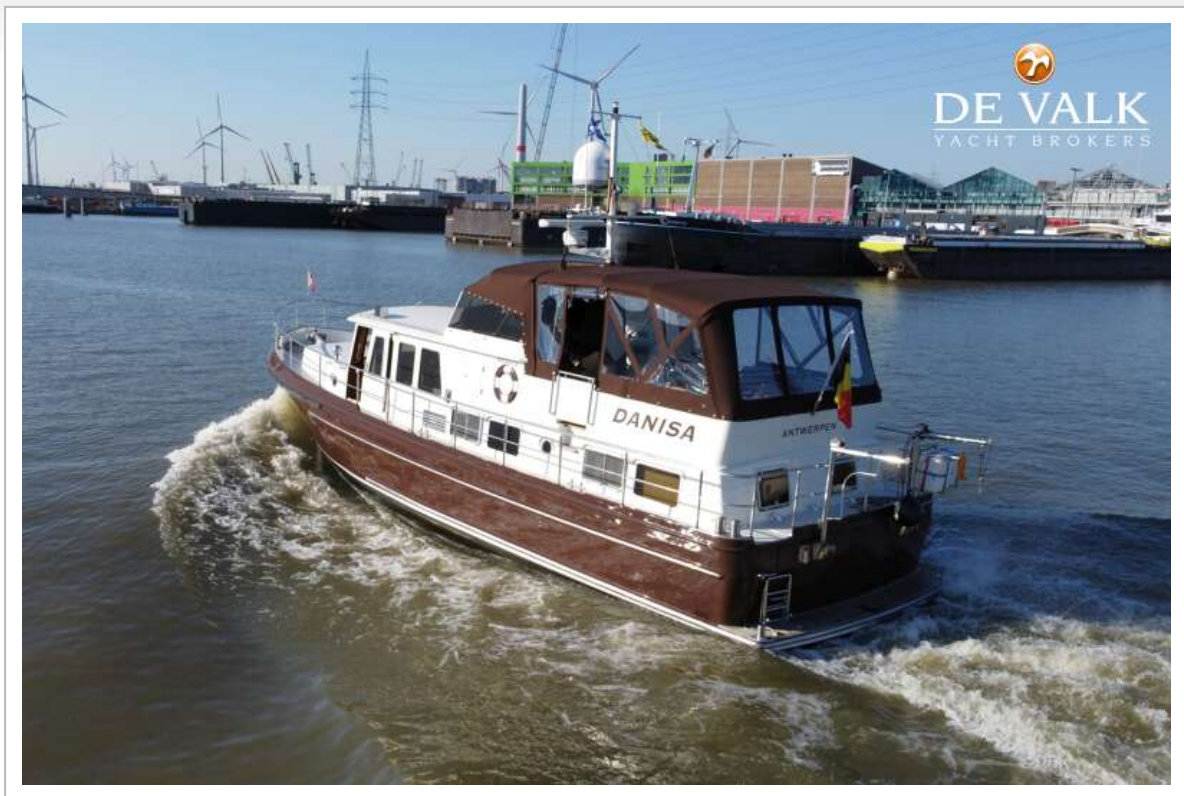
Radar reflector	yes
Fenders	yes
Mooring lines	yes
Spare parts	yes
Alarm system	Camera
TV	2x
TracVision ball	TV6 (2017)
Radio-cd player	yes
DVD player	yes
Cockpit speakers	2x
Speakers in salon	2x
Fire extinguisher	3x (2018)
Latest extinguisher survey	yes
Auto extinguisher system	yes



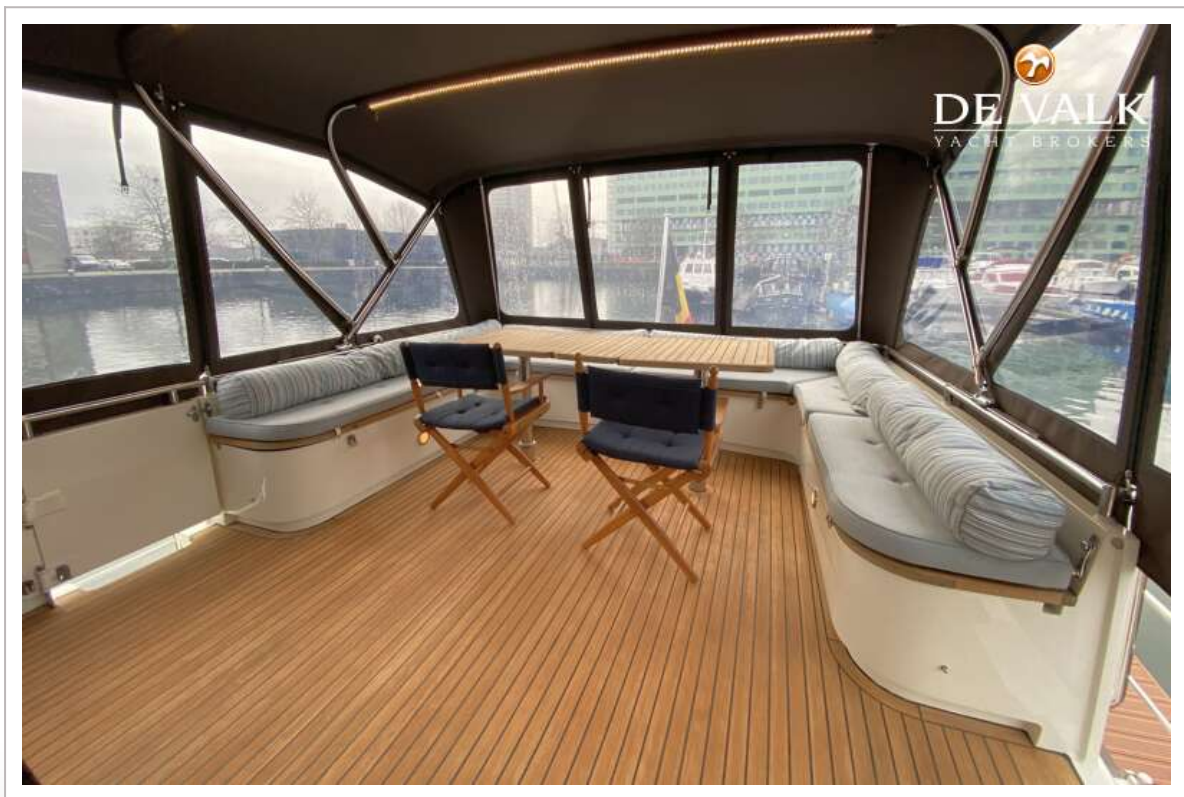
STENTOR 1500 FRANCE EDITION



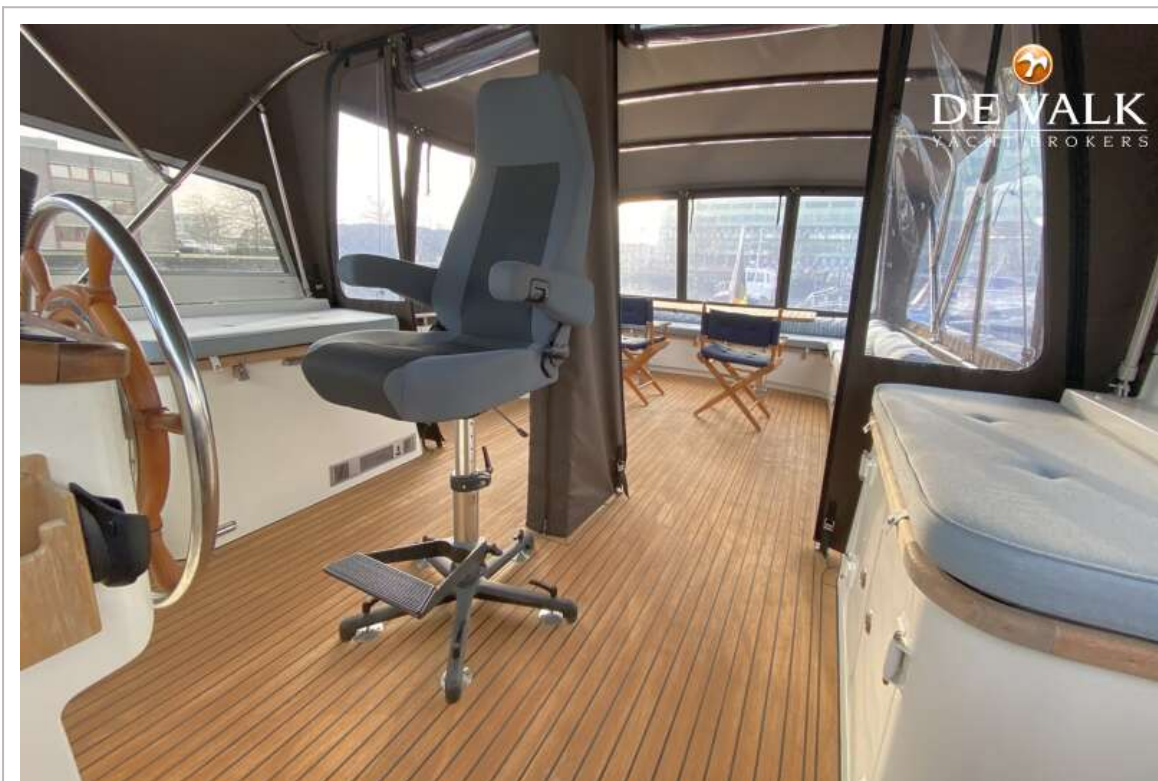
STENTOR 1500 FRANCE EDITION



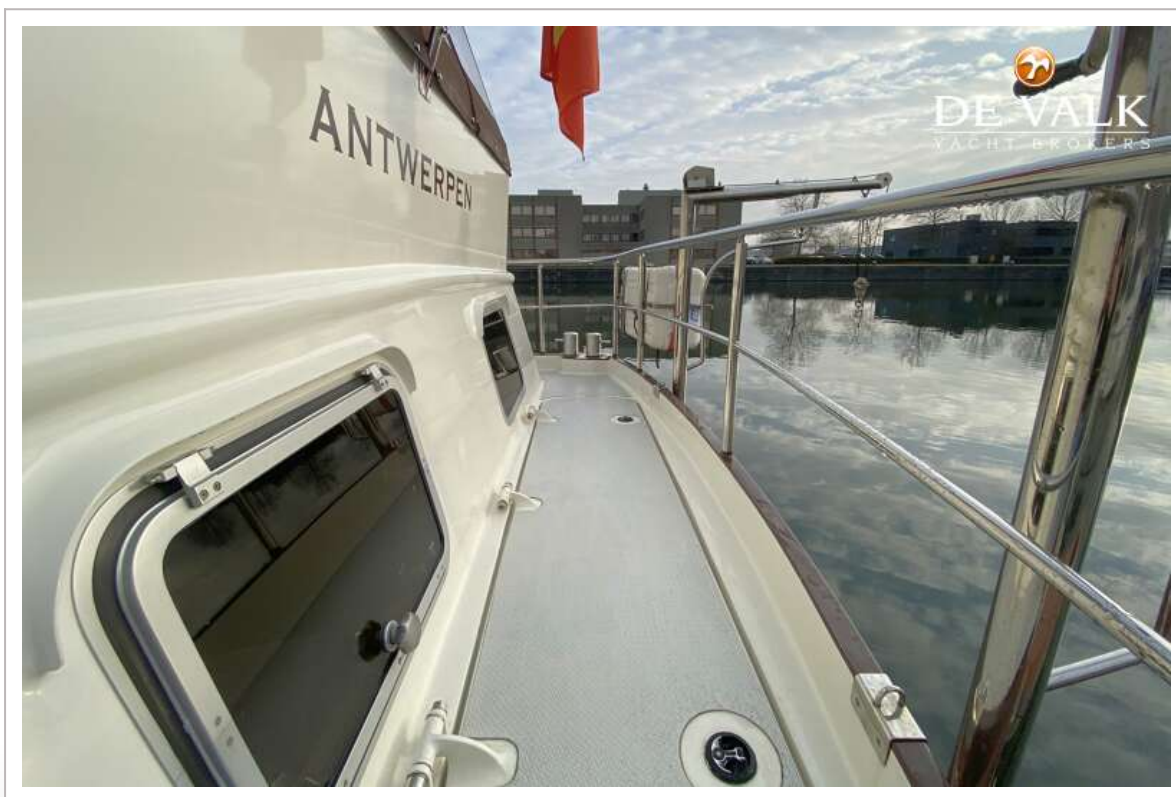
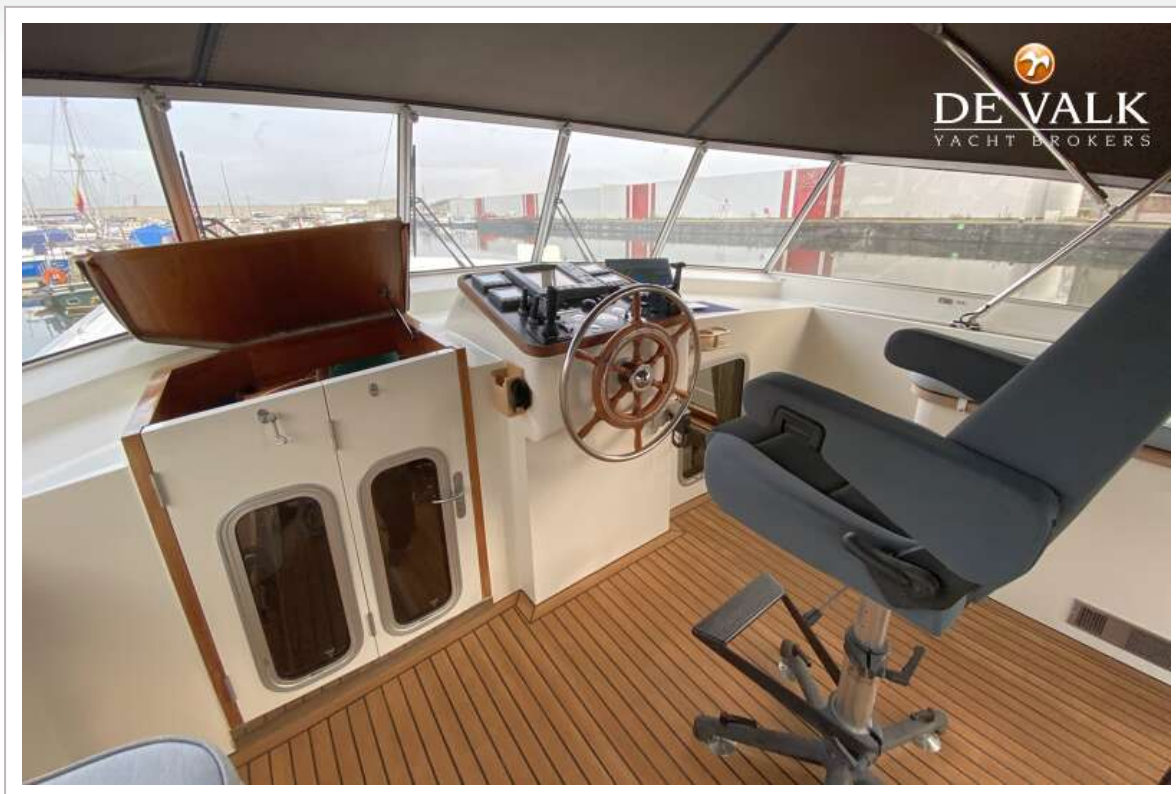
STENTOR 1500 FRANCE EDITION



STENTOR 1500 FRANCE EDITION



STENTOR 1500 FRANCE EDITION





STENTOR 1500 FRANCE EDITION



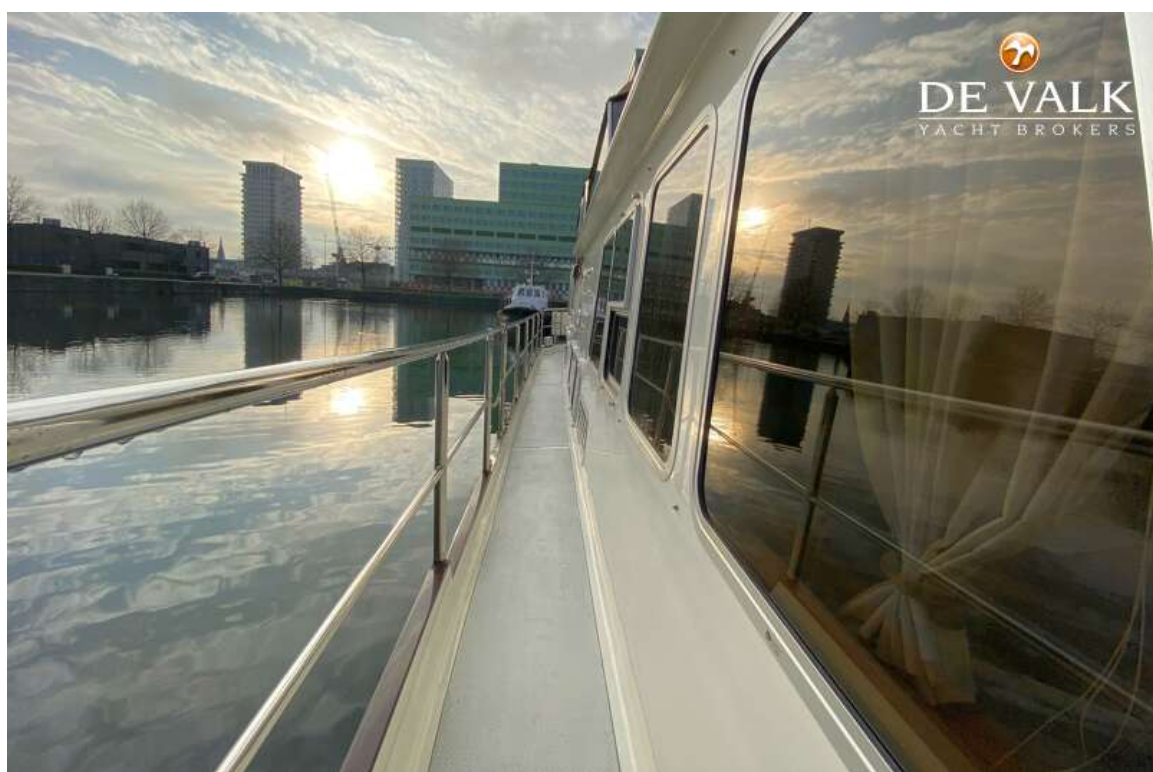
STENTOR 1500 FRANCE EDITION



STENTOR 1500 FRANCE EDITION



STENTOR 1500 FRANCE EDITION



STENTOR 1500 FRANCE EDITION



STENTOR 1500 FRANCE EDITION



STENTOR 1500 FRANCE EDITION



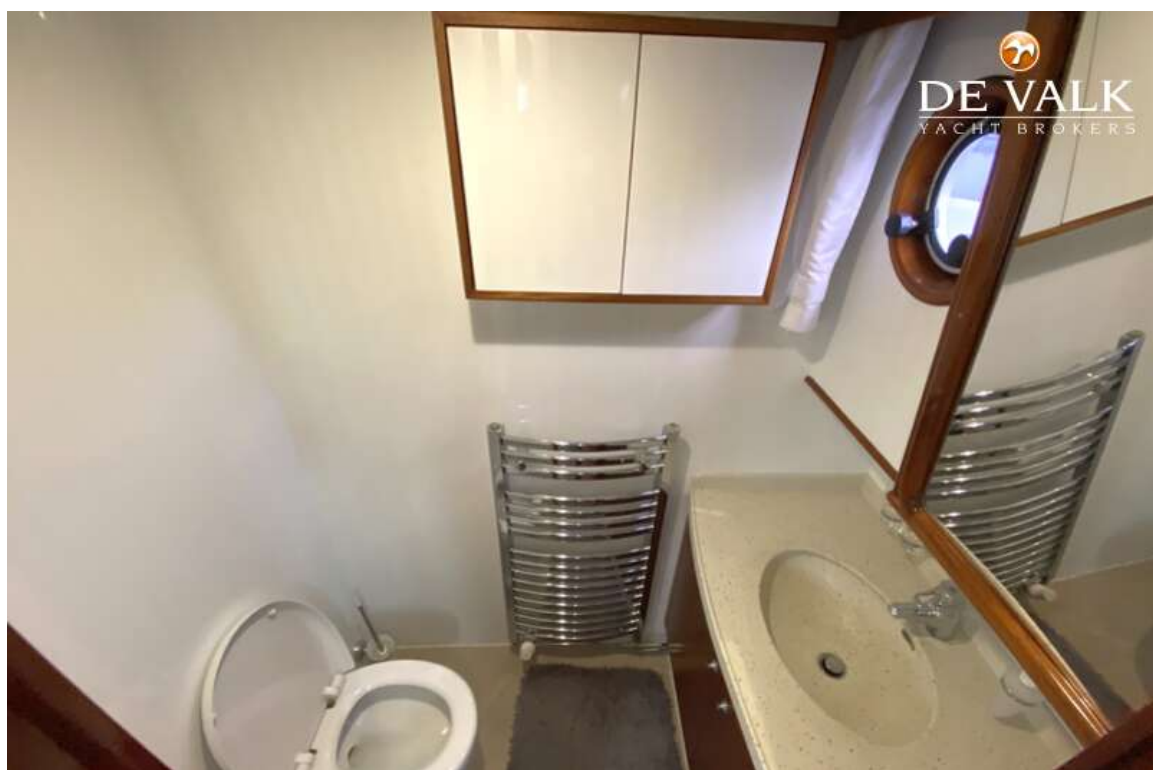
STENTOR 1500 FRANCE EDITION



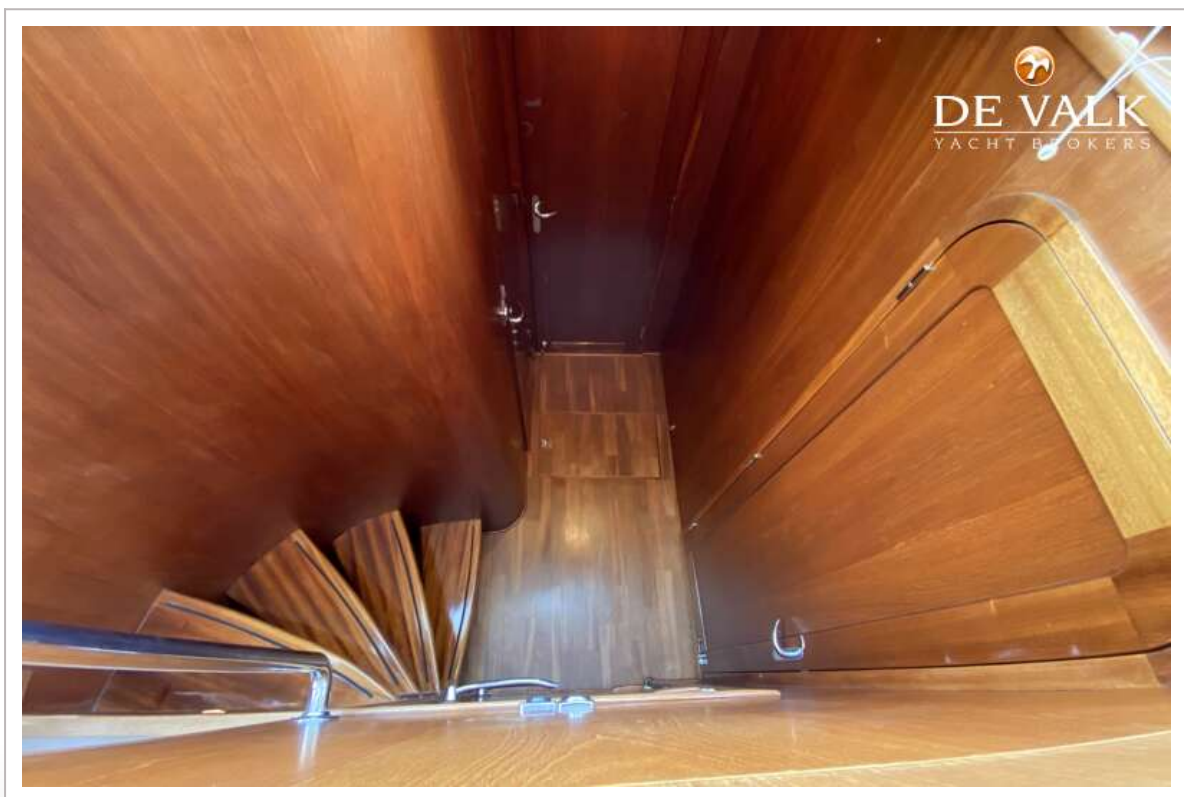
STENTOR 1500 FRANCE EDITION



STENTOR 1500 FRANCE EDITION



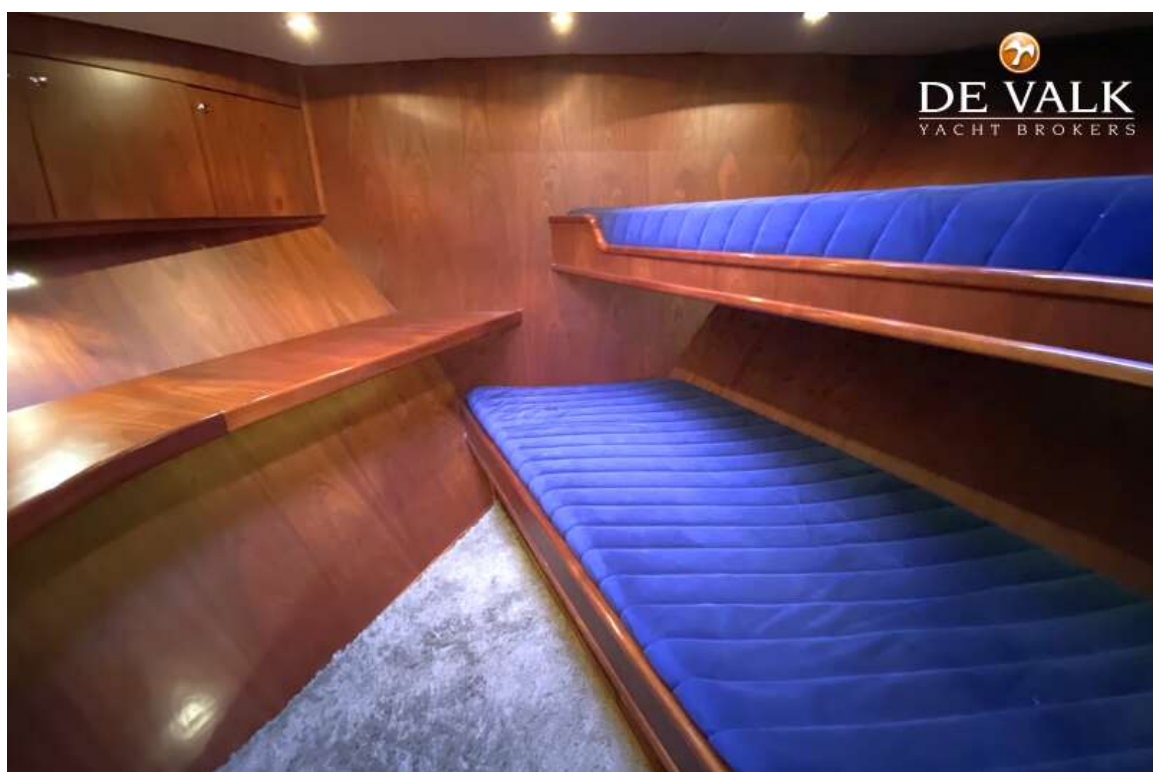
STENTOR 1500 FRANCE EDITION



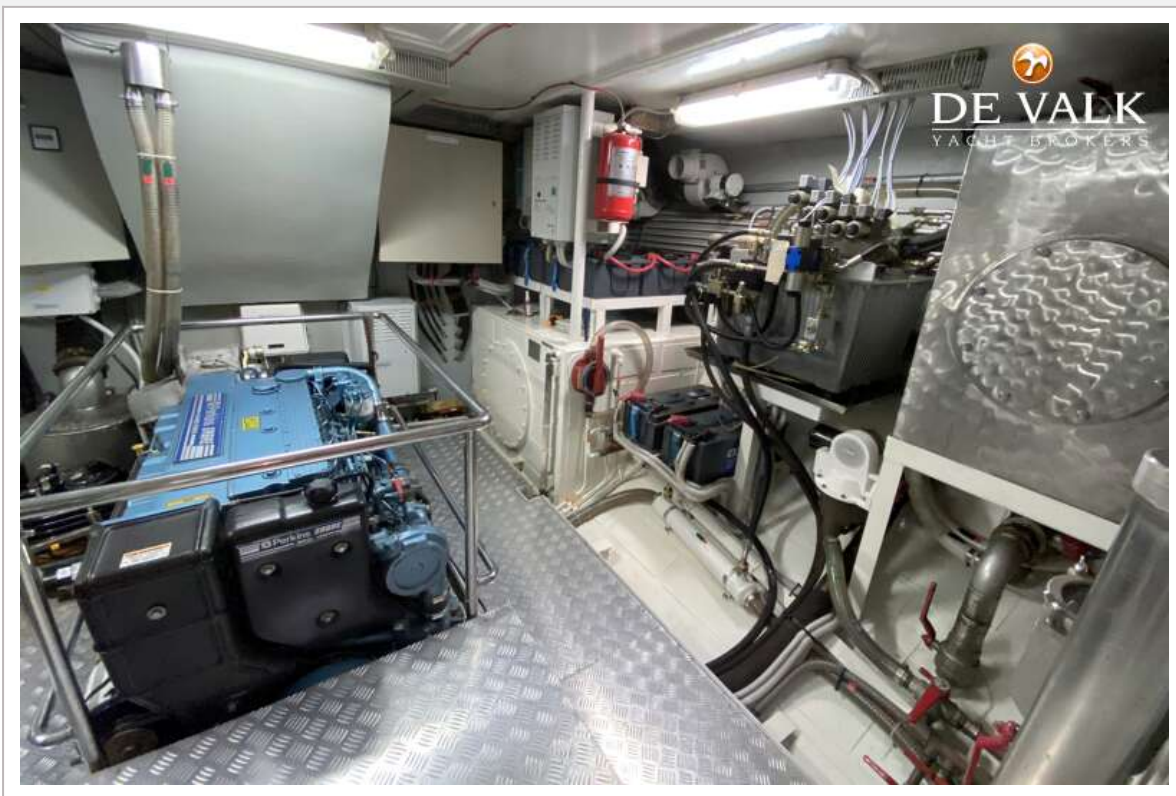
STENTOR 1500 FRANCE EDITION



STENTOR 1500 FRANCE EDITION



STENTOR 1500 FRANCE EDITION



STENTOR 1500 FRANCE EDITION

