



## APREAMARE 38 COMFORT

# APREAMARE 38 COMFORT

## BROKER'S COMMENTS

Elegant Italian design, traditional yacht building and modern performance all wrapped into one. The loft style cabin layout has convertible dinette and centerline double berth forward with ensuite facilities. The performance of these models has been much appreciated by many in both Southern and Northern European environments. With her convertible hardtop, the 38 Comfort model is suitable for both. Follow our virtual tour; <https://roundme.com/tour/233370/view/665458/> Rendez vous in Mediterranean style! The Apreamare 38 Comfort is ready for it. Are you?

*Marc Weijenberg*

## SPECIFICATIONS

<b>Dimensions</b>	11.21 x 3.56 x 1.08 (m)	<b>Builder</b>	Aprea Mare Italy
<b>Built</b>	2006	<b>Cabins</b>	1
<b>Material</b>	GRP	<b>Berths</b>	4
<b>Engine(s)</b>	2 x VM motor MD706LX diesel	<b>Hp/Kw</b>	2 x 320.00 (hp), 235.00 (kw)
<b>Asking price</b>	sold (VAT )	<b>Lying</b>	contact Sint Annaland

## CONTACT

<b>Sales office</b>	De Valk Sint Annaland B.V.	<b>Telephone</b>	+31 (0)166 601 000
<b>Address</b>	Koelhuisweg 4 4697 RM Sint Annaland NL	<b>E-mail</b>	sintannaland@devalk.nl

## DISCLAIMER

These particulars are given in good faith as supplied but cannot be guaranteed.



## GENERAL

Model	APREAMARE 38 COMFORT
Type	motor yacht
LOA (m)	11,21
Beam (m)	3,56
Draft (m)	1,08
Air draft (m)	3,76
Headroom (m)	1,92
Year built	2006
Launched	2006
Builder	Aprea Mare Italy
Country	Italy
Designer	Giovannia Aprea
Displacement (t)	9
CE norm	B
Hull material	GRP
Hull colour	blue
Hull shape	deep-V
Superstructure material	GRP
Rubbing strake	stainless steel
Deck material	GRP
Deck finish	teak
Cockpit deck finish	teak
Window frame	stainless steel
Deckhatch	yes
Portholes	stainless steel
Fuel tank (litre)	2 x 375
Level indicator (fuel tank)	yes
Freshwater tank (litre)	240
Wheel steering	hydraulic
Extra info	teak on deck needs work



## ACCOMMODATION

Cabins	1
Berths	4
Interior	cherry
Floor	teak and holly
Open cockpit	yes
Saloon	with L-shap settee
Headroom saloon (m)	1,92
Heating	diesel ducted hot air Eberspacher D4S
Dinette to convert into berth	(2,00 x 1,10 mtr)
Galley	yes
Countertop	plastic
Sink	stainless steel
Cooker	electric Bosch 2 burn
Microwave	yes
Fridge	+ Waeco 12v cockpit Isotherm 12v
Hot water system	220V + engine Isothemp
Water pressure system	electrical
Owners cabin	double bed
Bed length (m)	2,00 x 1,60
Wardrobe	hanging/drawers/shelves
Bathroom	en suite
Toilet	en suite
Toilet system	electric
Wash basin	in the bathroom
Shower	en suite

## MACHINERY

No of engines	2
Make	VM motor
Type	MD706LX



# APREAMARE 38 COMFORT

HP	320,00
kW	235,00
Fuel	diesel
Year installed	2006
Maximum speed (kn)	26,00
Cruising speed (kn)	7,00
Consumption (l/hr)	8,00
Engine hours	330
Engine cooling system	freshwater heat exchanger
Drive	shaft
Engine controls	bowden cable Morse
Gearbox	mechanical ZF
Bowthruster	electric Vetus 4 hp
Exhaust	watercooled
Propeller type	fixed
Propeller blades	4
Propeller shaft material	stainless steel
Shaft lubrication	water
Manual bilge pump	1 x
Electric bilge pump	2 x
Electrical installation	12/220v
Generator	silent separator Whisper 3.5kW
Running hours generator	3,5
Start battery	2 x 100ah
Service battery	2 x 100ah
Generator battery	1 x
Bowthruster battery	1 x 230ah
Battery monitor	Mastervolt
Battery charger	+ Dolphin 12v/10amp Mastervolt 12v/50amp
Diode battery combiners	yes
Shorepower	with cable
Trimtabs	QL Boat-trim



## NAVIGATION

Compass	Ritchie
Electric compass	via autopilot
Depth sounder	Geonav
VHF	Raymarine 260E
Autopilot	Raymarine ST6001
Rudder angle indicator	via autopilot
Plotter/GPS	Geonav 11C
Electronic chart(s)	2 x
Navigation lights	yes
Searchlight	with remote control

## EQUIPMENT

Fixed hardtop	with sliding roof
Cockpit cover	yes
Cockpit cushions	yes
Bathing platform	yes
Boarding ladder	stainless steel
Gangway	electr/hydraulic Opacmare
Deck shower	yes
Anchor	Bruce Stainless
Windlass	electrical Lofrans Kobra
Sea railing	stainless steel
Grab rail (superstructure)	stainless steel
Pulpit	yes
Wiper	2 x Vetus
Horn	electric
Fenders	yes
Mooring lines	yes
Radio-cd player	Sony
Cockpit speakers	yes



Fire extinguisher	yes
Latest extinguisher survey	yes



# APREAMARE 38 COMFORT





# APREAMARE 38 COMFORT



# APREAMARE 38 COMFORT





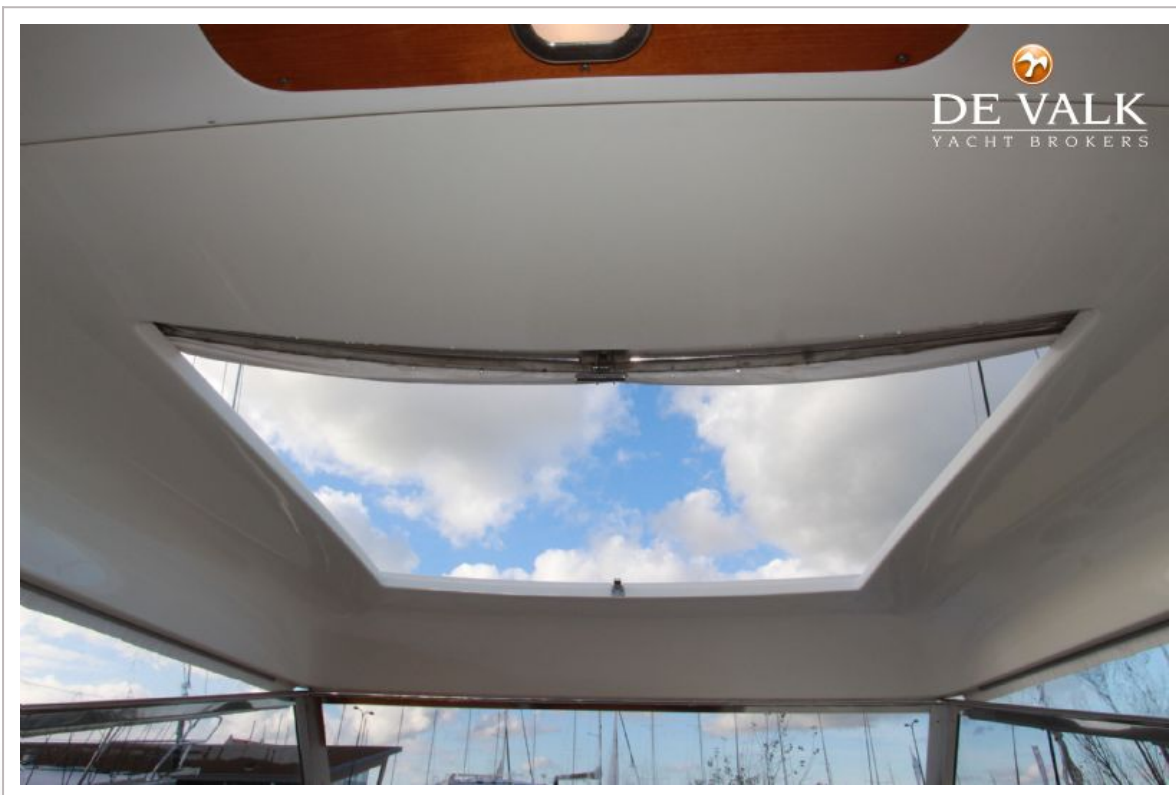
# APREAMARE 38 COMFORT



# APREAMARE 38 COMFORT



# APREAMARE 38 COMFORT





# APREAMARE 38 COMFORT



## APREAMARE 38 COMFORT





# APREAMARE 38 COMFORT





# APREAMARE 38 COMFORT



# APREAMARE 38 COMFORT





# APREAMARE 38 COMFORT

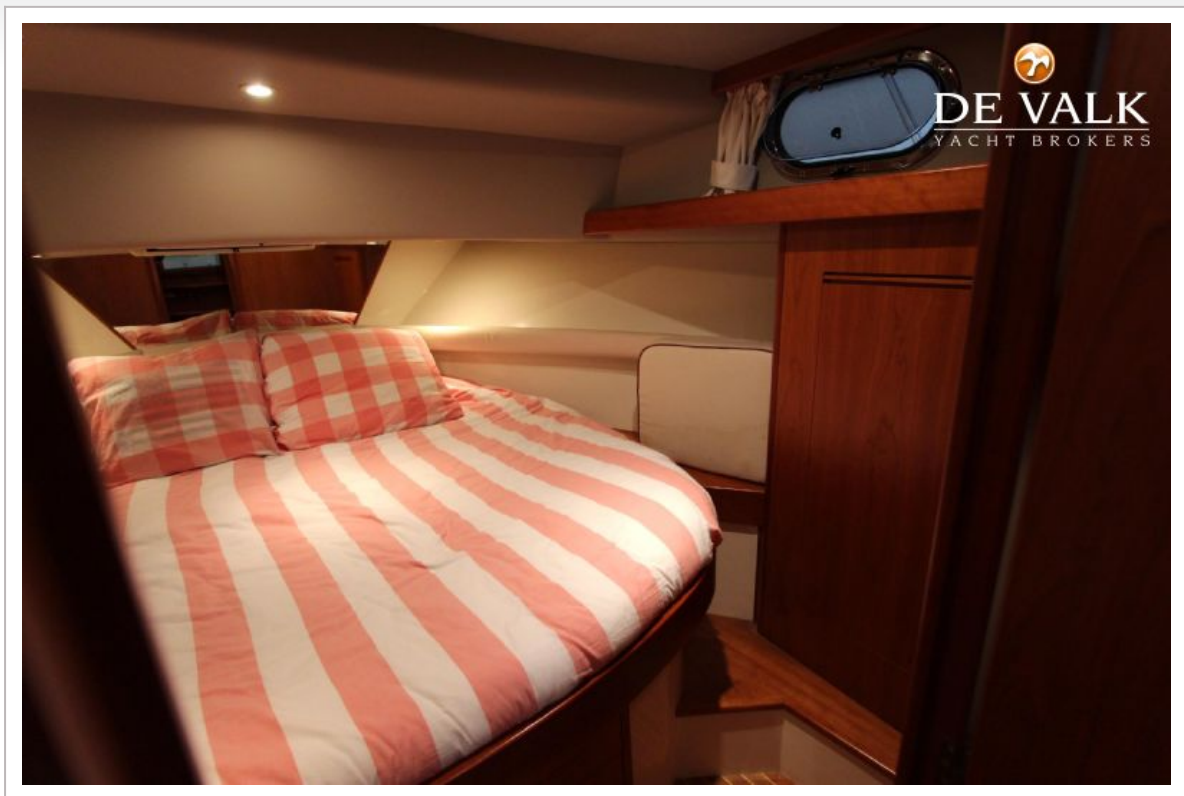


# APREAMARE 38 COMFORT





# APREAMARE 38 COMFORT



# APREAMARE 38 COMFORT



# APREAMARE 38 COMFORT



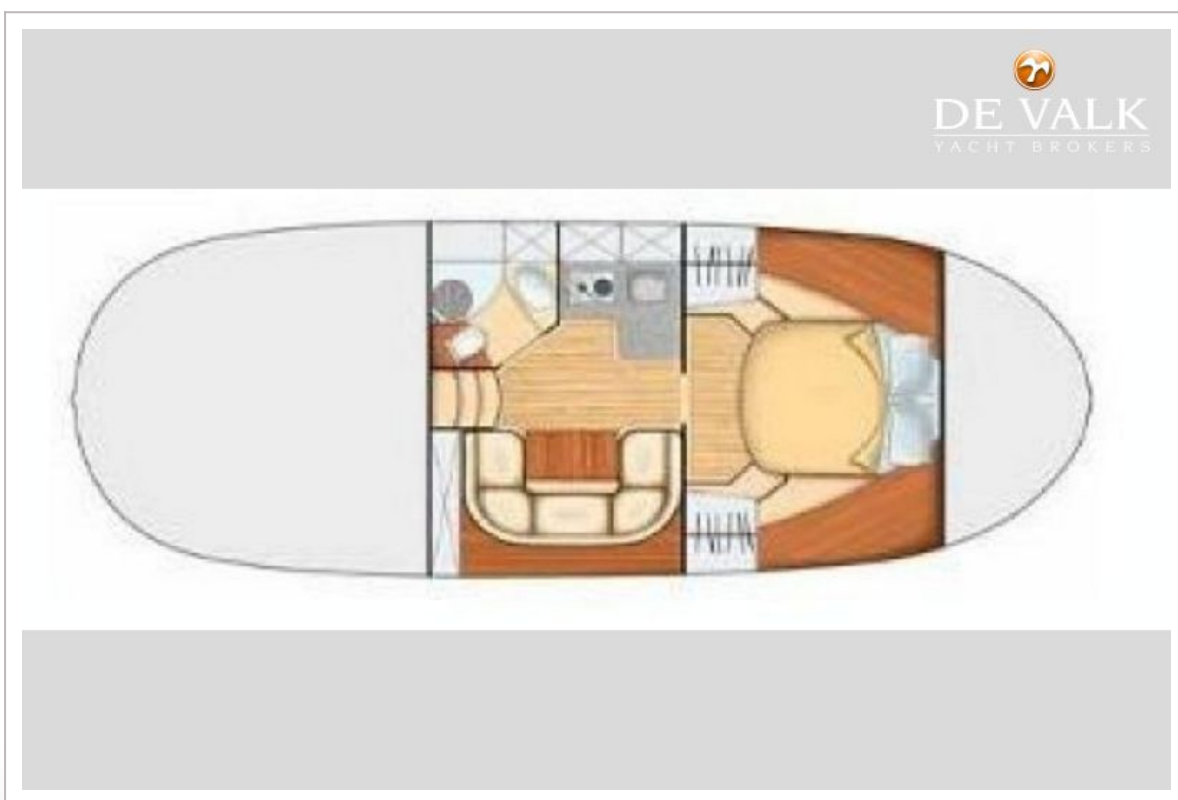


# APREAMARE 38 COMFORT





# APREAMARE 38 COMFORT

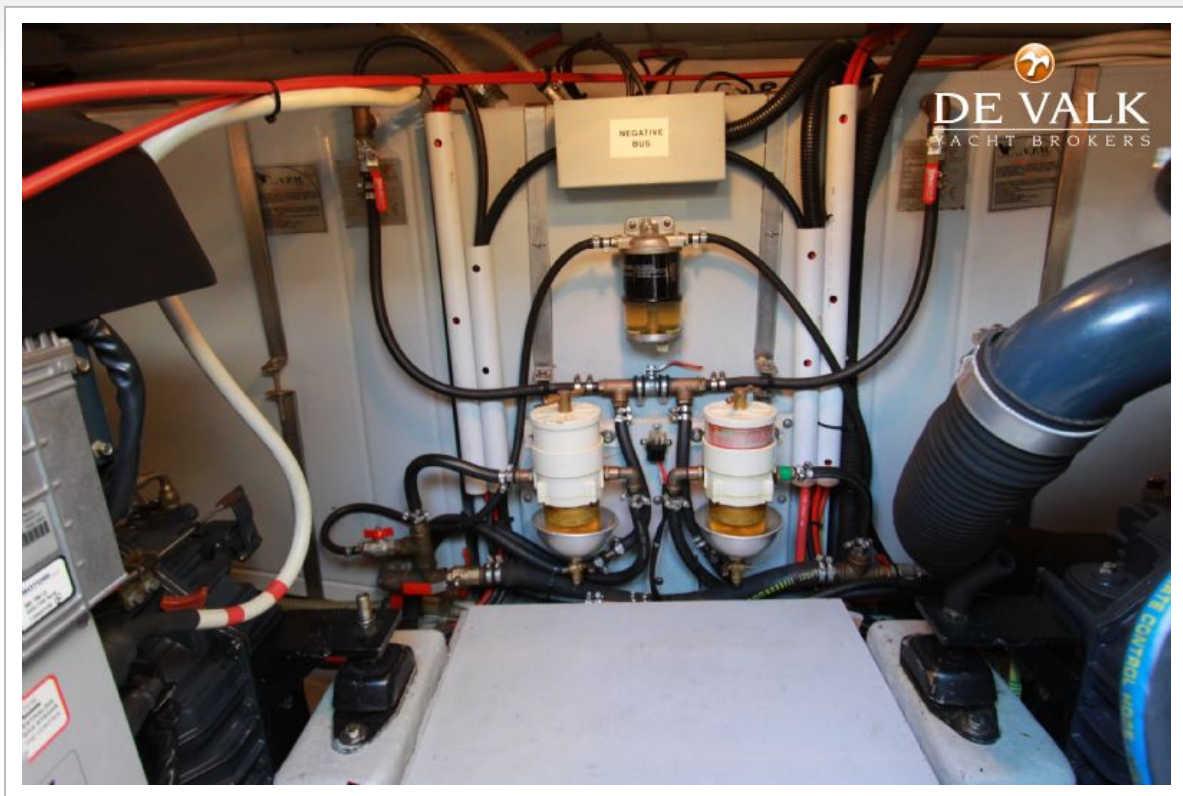


# APREAMARE 38 COMFORT





# APREAMARE 38 COMFORT



# APREAMARE 38 COMFORT





# APREAMARE 38 COMFORT

