



DE VALK  
YACHT BROKERS



## BAVARIA 34 CRUISER



DE VALK  
YACHT BROKERS

# BAVARIA 34 CRUISER

## BROKER'S COMMENTS

The Bavaria 34 is a popular yacht from the Bavaria yard designed by J&J with a high value for money rating. This size of 34 feet is attractive for many sailors Her interior woodwork is nice, she has lots of storage space and as a family yacht very much appreciated. With her recent main and head sail, lazy jack's, Gennaker she is a well performing cruiser. Well equipped with many nav aids & cruising goodies. VAT can be deducted.

*Ger Bayens*

## SPECIFICATIONS

<b>Dimensions</b>	10.45 x 3.60 x 1.90 (m)	<b>Builder</b>	Bavaria Yachtbau GmbH
<b>Built</b>	2008	<b>Cabins</b>	2
<b>Material</b>	GRP	<b>Berths</b>	6
<b>Engine(s)</b>	1 x Volvo Penta D1-20B diesel	<b>Hp/Kw</b>	19.00 (hp), 13.97 (kw)
<b>Asking price</b>	sold (VAT )	<b>Lying</b>	at sales office

## CONTACT

<b>Sales office</b>	De Valk Sint Annaland B.V.	<b>Telephone</b>	+31 (0)166 601 000
<b>Address</b>	Koelhuisweg 4 4697 RM Sint Annaland NL	<b>E-mail</b>	sintannaland@devalk.nl

## DISCLAIMER

These particulars are given in good faith as supplied but cannot be guaranteed.



# BAVARIA 34 CRUISER

## GENERAL

Model	BAVARIA 34 CRUISER
Type	sailing yacht
LOA (m)	10,45
LWL (m)	9,20
Beam (m)	3,60
Draft (m)	1,90
Air draft (m)	16,50
Headroom (m)	1,86
Year built	2008
Builder	Bavaria Yachtbau GmbH
Country	Germany
Designer	J&J Design
Displacement (t)	5,7
Ballast (tonnes)	cast iron 1,5
CE norm	A
Hull material	GRP
Hull colour	white
Hull shape	round-bilged
Keel type	fin keel
Superstructure material	GRP
Deck material	GRP
Deck finish	teak
Cockpit deck finish	teak
Window frame	aluminium
Window material	polycarbonate
Deckhatch	yes
Portholes	aluminium
Fuel tank (litre)	polyethylene 150
Freshwater tank (litre)	polyethylene 210
Blackwater tank (litre)	polyethylene 80



# BAVARIA 34 CRUISER

Blackwater tank extraction	deck extraction + uw line
Wheel steering	cable steering Lewmar
Emergency tiller	yes

## ACCOMMODATION

Cabins	2
Berths	6
Interior	mahogany
Floor	teak and holly
Saloon	yes
Headroom saloon (m)	1,86 - 1,90
Heating	diesel ducted hot air Webasto
Chart table	yes
Galley	yes
Countertop	plastic
Sink	stainless steel 2 x
Cooker	calor gas Bavaria Yachts 2 burn
Oven	Bavaria Yachts
Microwave	Siemens
Fridge	12v Waeco
Hot water system	220V + engine
Water pressure system	electrical
Owners cabin	v-bed
Bed length (m)	2,00 x 1,75
Wardrobe	hanging/drawers/shelves
Bathroom	shared 1
Toilet	shared
Toilet system	manual
Wash basin	in the bathroom
Shower	shared
Guest cabin 1	double bed



# BAVARIA 34 CRUISER

Bed length (m)	1,90 x 2,00
Wardrobe	hanging and shelves

## MACHINERY

No of engines	1
Make	Volvo Penta
Type	D1-20B
HP	19,00
kW	13,97
Fuel	diesel
Year installed	2008
Maximum speed (kn)	6
Cruising speed (kn)	5
Consumption (l/hr)	2,5
Engine hours	2283
Engine cooling system	freshwater heat exchanger
Drive	sail-drive
Saildrive seal	(2008)
Engine controls	bowden cable
Gearbox	mechanical Volvo Penta
Exhaust	watercooled
Propeller type	fixed
Propeller blades	2
Manual bilge pump	yes
Electric bilge pump	yes
Electrical installation	12/220v
Start battery	1 x 60ah
Service battery	2 x 140ah
Battery monitor	yes
Battery charger	Quickline 12v/25amp
Inverter	Victron 350watt



# BAVARIA 34 CRUISER

Shorepower	with cable
------------	------------

## NAVIGATION

Compass	Plastimo Olympic 135
Electric compass	via autopilot
Depth sounder/log	Raymarine ST60 Tridata
Windset	Raymarine ST60
VHF	Shipmate RS81
Autopilot	Raymarine ST6001
Plotter/GPS	Raymarine C70
Navtex	Furuno
Electronic chart(s)	1 x
Navigation lights	yes

## EQUIPMENT

Sprayhood	yes
Cockpit table	yes
Bathing platform	(no electric servo)
Boarding ladder	stainless steel
Deck shower	yes
Anchor	CQR Plough
Anchor chain	line
Sea railing	stainless steel
Grab rail (superstructure)	stainless steel
Pushpit	yes
Pulpit	yes
Lifejackets	5 x
Lifebuoy	yes
Radar reflector	yes
Fenders	yes
Mooring lines	yes



# BAVARIA 34 CRUISER

TV	Lenco
TV receiver	(no subscription) Digitenne
Radio-cd player	yes
Cockpit speakers	yes
Speakers in salon	yes
Clock - barometer	yes
Fire extinguisher	2 x

## RIGGING

Rigging	sloop
Standing rigging	wire
Brand mast	Seldén
Material mast	aluminium
Spreaders	2
Mainsail	Semi Fullbattened, Hagoort sails (2016)
Mainsail cover	+ Lazy Jacks
Genoa	Hagoort with UV protection (2016)
Cutter furler	Furlex
Gennaker	De Vries
Reefing System	quick-one-line-reefing
Backstay adjuster	tackle
Boomvang	mechanical Selden Rodkicker
Genoa sheetwinches	2 x Lewmar 40ST
Halyard winches	2 x Lewmar 30ST
Multifunctional winches	2 x Lewmar 30ST
Extra info	German sheeting system





# BAVARIA 34 CRUISER





# BAVARIA 34 CRUISER



# BAVARIA 34 CRUISER





# BAVARIA 34 CRUISER



# BAVARIA 34 CRUISER





# BAVARIA 34 CRUISER

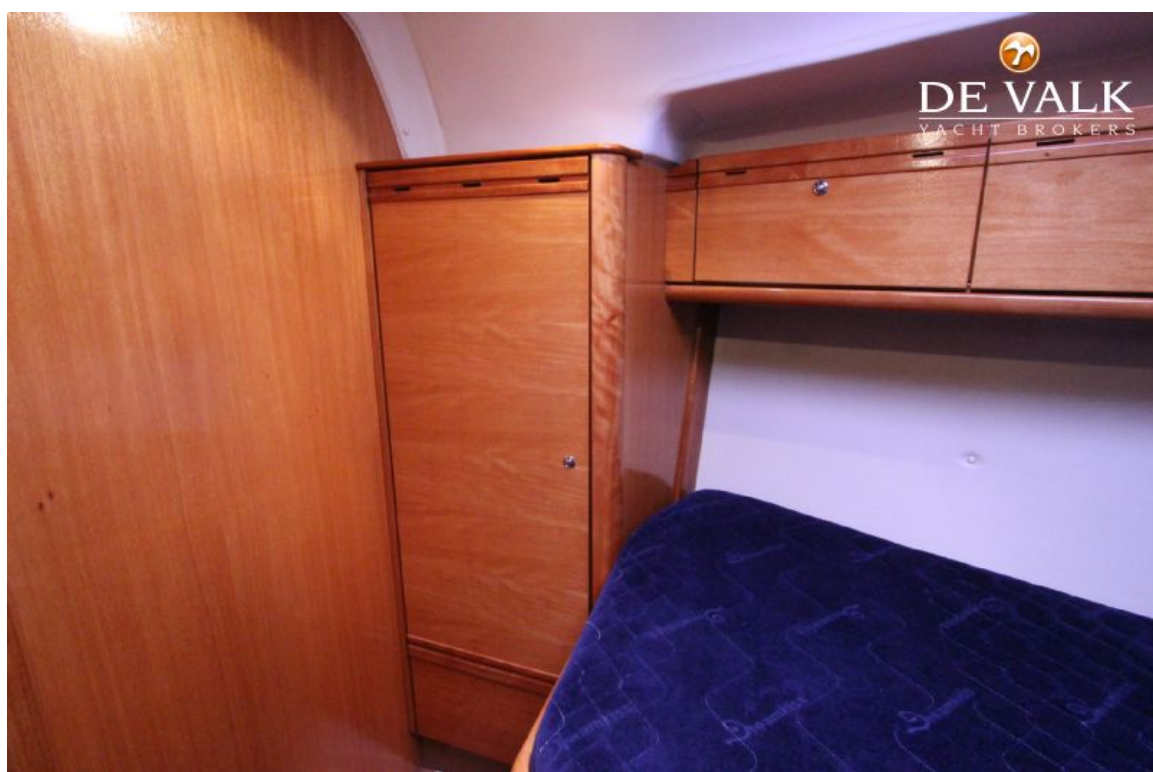


# BAVARIA 34 CRUISER





# BAVARIA 34 CRUISER



# BAVARIA 34 CRUISER

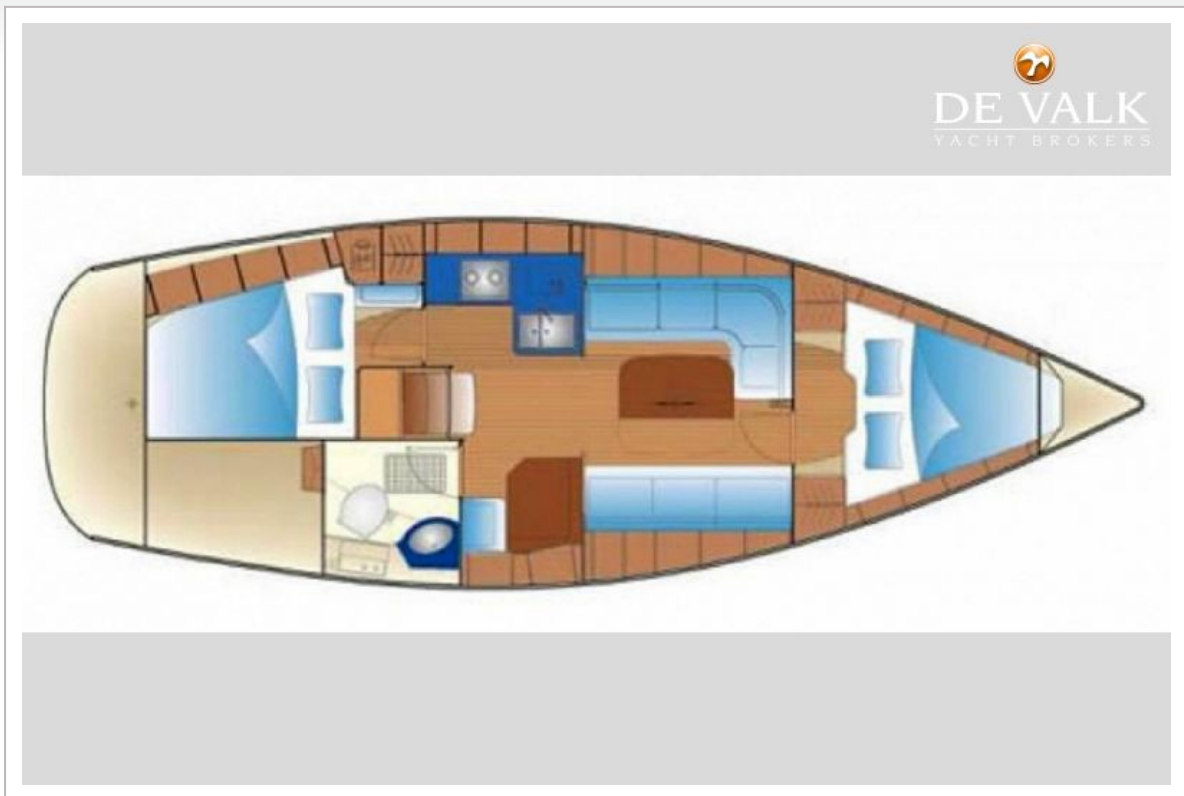




# BAVARIA 34 CRUISER

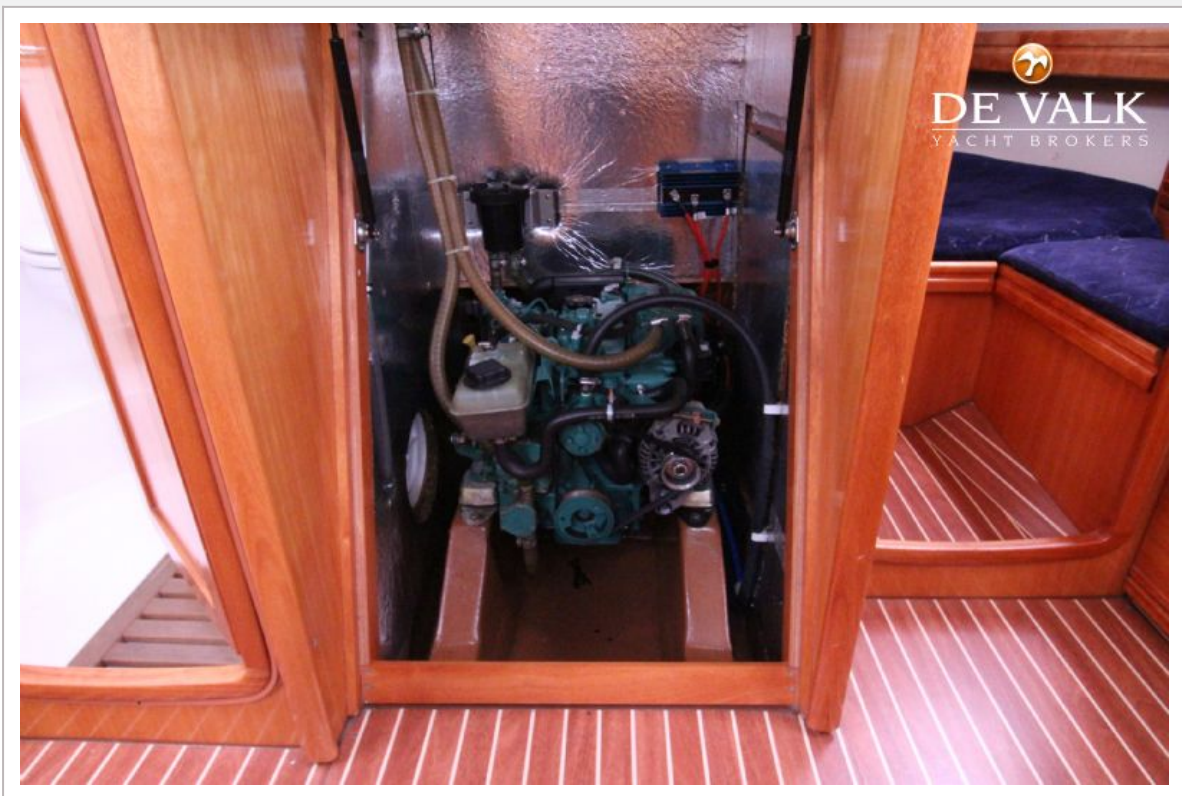


# BAVARIA 34 CRUISER





# BAVARIA 34 CRUISER



# BAVARIA 34 CRUISER

