



DE VALK
YACHT BROKERS



SOUTHERLY 35RS.



DE VALK
YACHT BROKERS

SOUTHERLY 35RS.

BROKER'S COMMENTS

The Southerly 35RS has a easy to handle sail plan and comfortable decksalon layout with two cabins. The centreboard keel is a very important feature. She is able to dry out upright!. Virtually limitless cruising possibilities and comfort while underway. RS stands for "raised saloon" which has a panoramic view of the surroundings. Spacious layout below with good aft cabin and stowage space throughout. The new Southerly 35RS with raised saloon seating has been designed with the best possible sailing characteristics for a fast exhilarating sail, with safety and comfort a priority.

Marc Weijenberg

SPECIFICATIONS

Dimensions	10.82 x 3.57 x 0,72 / 2.18 (m)	Builder	Northshore
Built	2004	Cabins	2
Material	GRP	Berths	5
Engine(s)	1 x Yanmar 3YM30 diesel	Hp/Kw	29.00 (hp), 21.00 (kw)
Asking price	sold (VAT)	Lying	at sales office

CONTACT

Sales office	De Valk Sint Annaland B.V.	Telephone	+31 166 601 000
Address	Koelhuisweg 4 4697 RM Sint Annaland NL	E-mail	sintannaland@devalk.nl

DISCLAIMER

These particulars are given in good faith as supplied but cannot be guaranteed.



SOUTHERLY 35RS.

GENERAL

Model	SOUTHERLY 35RS.
Type	sailing yacht
LOA (m)	10,82
LWL (m)	9,22
Beam (m)	3,57
Draft (m)	2,18
Draft min (m)	0,72
Air draft (m)	16,50
Headroom (m)	1,91
Year built	2004
Launched	2005
Builder	Northshore
Country	Great Britain
Designer	Humphreys Yacht Design
Displacement (t)	6,9
Ballast (tonnes)	cast iron 3,2
CE norm	A
Hull material	GRP
Hull colour	blue
Hull shape	round-bilged
Keel type	centreboard
Superstructure material	GRP
Rubbing strake	stainless steel
Deck material	GRP
Deck finish	teak
Cockpit deck finish	teak
Dorades	2 x
Window frame	aluminium
Window material	polycarbonate
Deckhatch	yes



SOUTHERLY 35RS.

Portholes	aluminium
Fuel tank (litre)	stainless steel 180
Freshwater tank (litre)	stainless steel 225
Blackwater tank (litre)	stainless steel 40
Blackwater tank extraction	deck extraction + pump
Wheel steering	mechanical Lewmar
Emergency tiller	yes
Extra info	Twin rudders for extra maneuverability and stable beaching with keel up.
Extra info	Stern professionally painted, hull needs polishing.

ACCOMMODATION

Cabins	2
Berths	5
Interior	cherry
Floor	teak and holly
Deck saloon	with panoramic views
Headroom saloon (m)	1,91
Heating	diesel ducted hot air Eberspaecher D4L
Chart table	yes
Aft Cabin	yes
Dinette	yes
Galley	yes
Countertop	corian
Sink	stainless steel 2 x
Cooker	calor gas Plastimo 2 burn
Oven	with grill Plastimo
Fridge	watercooled + holdingplate Isotherm 12v
Hot water system	220V + engine
Water pressure system	electrical
Manual and/or foot pump	footpump



SOUTHERLY 35RS.

Owners cabin	double bed
Bed length (m)	1,95 x 1,50
Wardrobe	hanging/drawers/shelves
Bathroom	shared 1
Toilet	shared
Toilet system	manual
Wash basin	in the bathroom
Shower	shared
Guest cabin 1	v-bed
Bed length (m)	2,00 x 1,55
Wardrobe	hanging and shelves
Extra info	folding blinds for decksalon

MACHINERY

No of engines	1
Make	Yanmar
Type	3YM30
HP	29,00
kW	21,00
Fuel	diesel
Year installed	2004
Maximum speed (kn)	7,00
Cruising speed (kn)	6,00
Consumption (l/hr)	2,00
Engine hours	1800
Engine cooling system	freshwater heat exchanger
Drive	shaft
Engine controls	bowden cable
Gearbox	mechanical
Bowthruster	electric Vetus 55kgf
Exhaust	watercooled



SOUTHERLY 35RS.

Propeller type	fixed
Propeller blades	3 x
Propeller shaft material	stainless steel
Shaft lubrication	water
Manual bilge pump	1 x
Electric bilge pump	1 x
Electrical installation	12v/220v
Start battery	1 x 110amp
Service battery	2 x 110amp
Battery monitor	yes
Battery charger	Victron Phoenix 50amp (2009)
Shorepower	with cable

NAVIGATION

Compass	Whitlock
Electric compass	via autopilot
Depth sounder	Raymarine ST60
Log	Raymarine ST60
Windset	Raymarine ST60
Repeater	Raymarine ST60 Graphic
VHF	+AKH82 (GMDSS) Simrad AHS81
Autopilot	with Jefa drive Simrad AP27
Radar	Simrad
GPS	Simrad
Plotter	cockpit mounted Simrad CX34
Navtex	Furuno NX-300
Electronic chart(s)	1 x
AIS receiver	Amec Camino 108 Wifi
EPIRB	GME MT403G
Navigation lights	yes



SOUTHERLY 35RS.

EQUIPMENT

Sprayhood	yes
Sun awning	yes
Winter cover	with mast-up
Cockpit table	yes
Bathing platform	yes
Boarding ladder	stainless steel
Anchor	Bruce
Anchor chain	Approx. 60 mtr
Anchor 2	CQR Plough Fortress +
Anchor chain	lead-line 30 mtr
Windlass	electrical With remote
Sea railing	stainless steel
Grab rail (superstructure)	stainless steel
Railing side opening gates	2 x
Pushpit	with back rests
Pulpit	with small seat
Life raft	valise (or bag) Bombard (2015)
Life raft (pers)	4
Lifejackets	yes
Lifebuoy	yes
Danbuoy	yes
Radar reflector	Echomax
Fenders	yes
Mooring lines	yes
Radio-cd player	Blaupunkt
Speakers in salon	yes
Fire extinguisher	(2016)

RIGGING

Rigging	fractional
---------	------------



SOUTHERLY 35RS.

Standing rigging	wire
Brand mast	Seldén
Material mast	aluminium
Spreaders	2 x
Mainsail cover	with Lazy Bag/Jacks
Fully battened mainsail	Olympic Sails (2015)
Jib	self-tacking (2005)
Genoa furler	Furlex
Gennaker	with Protech furlerm Hood (2006)
A-symmetric spi	with squeezer Cruising Chute
Self tacking jib installation	yes
Reefing System	quick-one-line-reefing
Backstay adjuster	mechanical Selden
Boomvang	mechanical Selden
Genoa sheetwinches	2 x Lewmar 40ST
Halyard winches	1 x Lewmar
Gennaker pole	Stainless steel
Extra info	All halyards and sheets lead aft into the cockpit



SOUTHERLY 35RS.



SOUTHERLY 35RS.



SOUTHERLY 35RS.



SOUTHERLY 35RS.



SOUTHERLY 35RS.



SOUTHERLY 35RS.



SOUTHERLY 35RS.



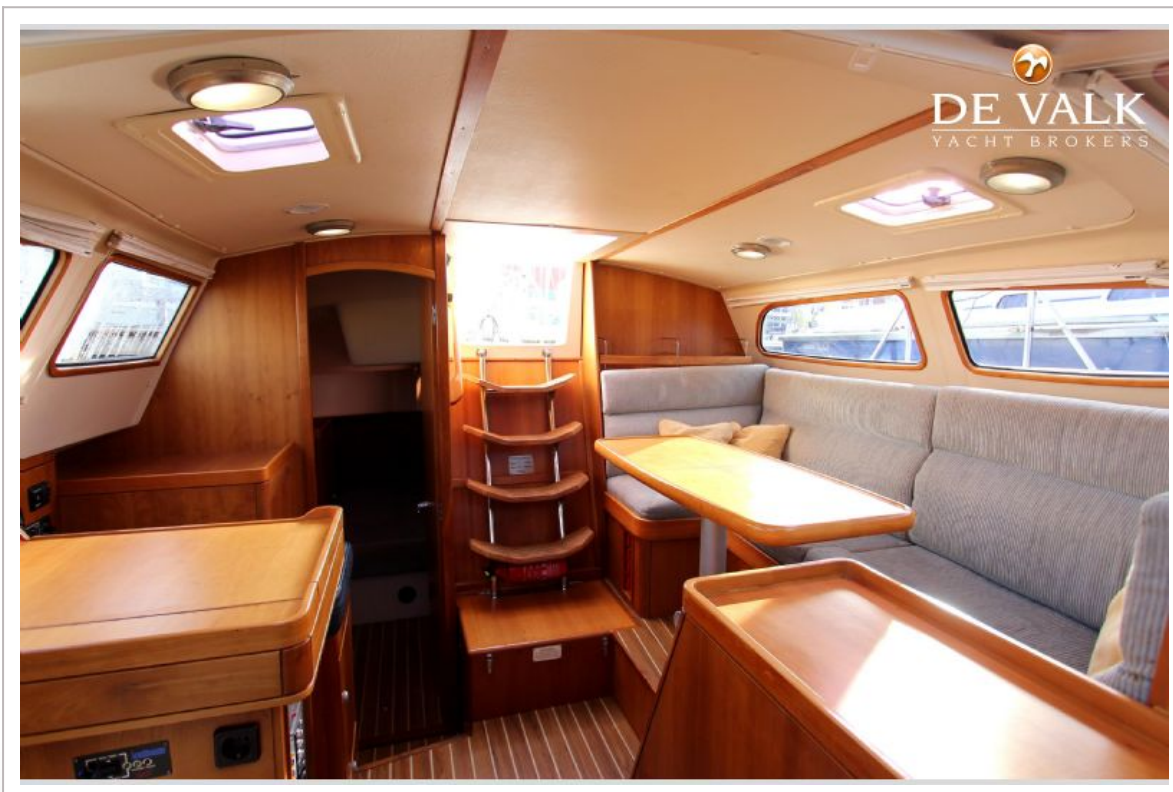
SOUTHERLY 35RS.



SOUTHERLY 35RS.



SOUTHERLY 35RS.



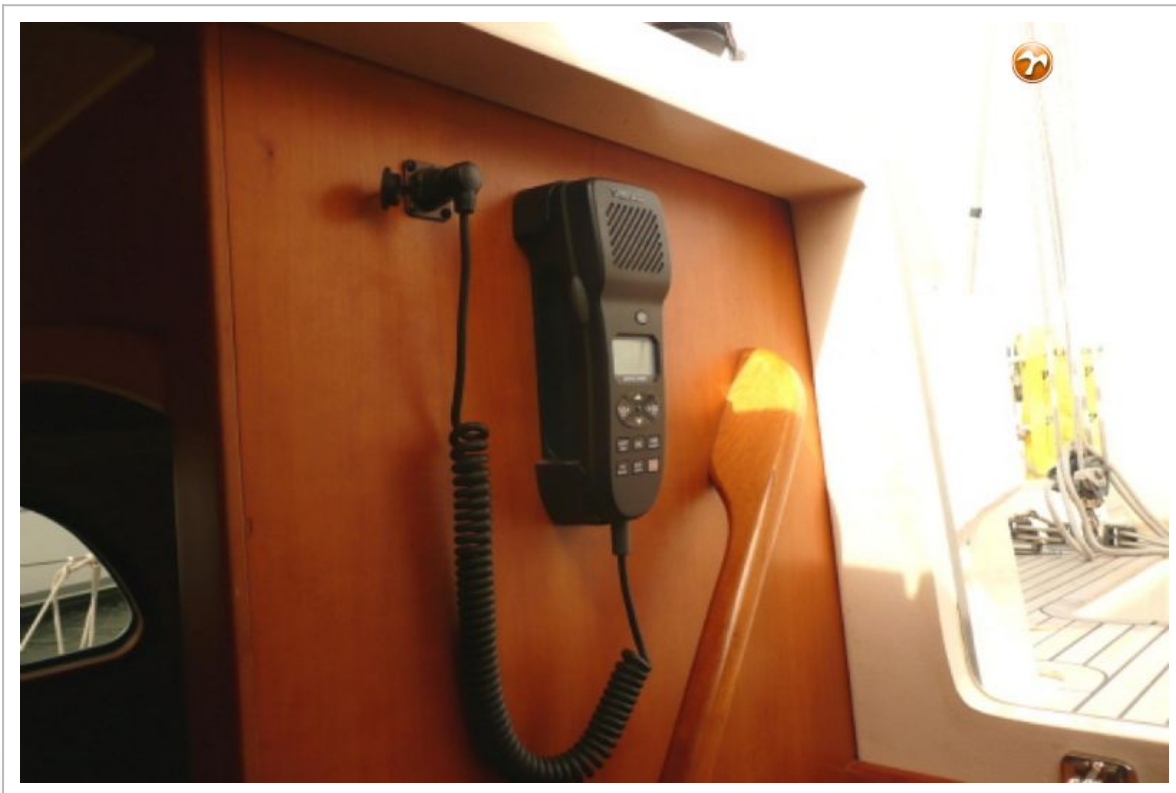
SOUTHERLY 35RS.



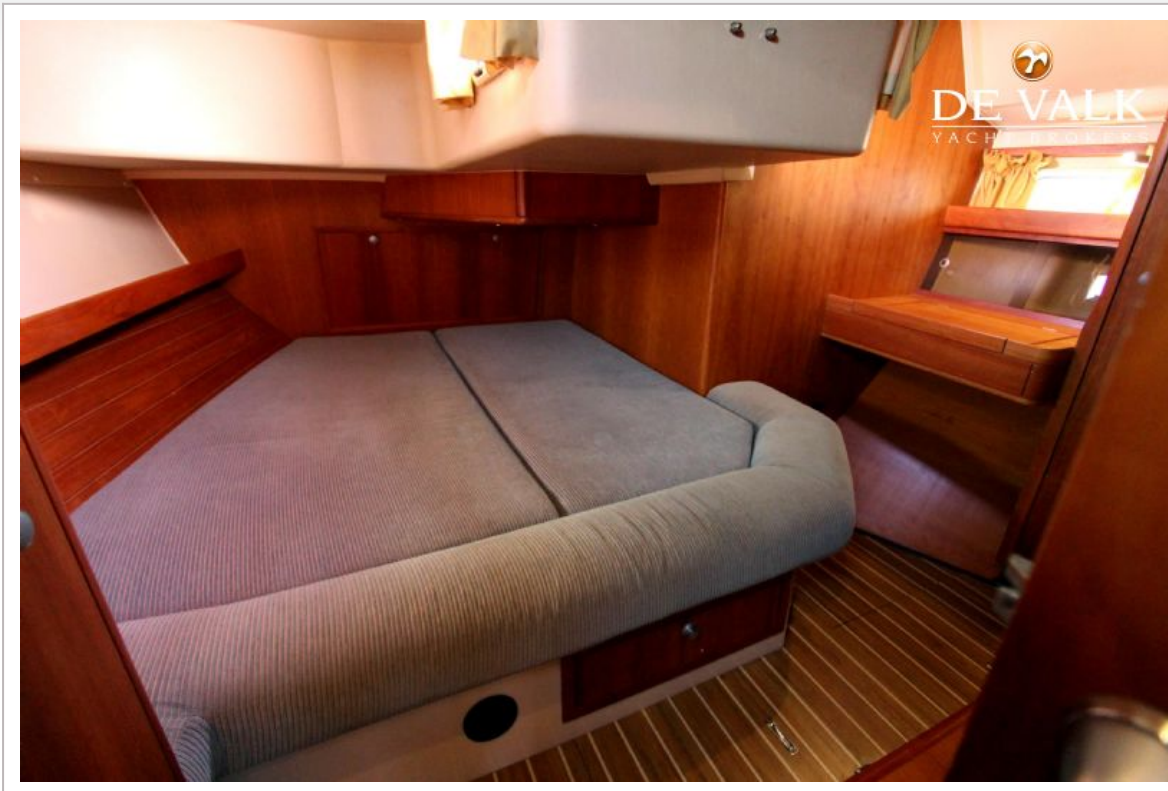
SOUTHERLY 35RS.



SOUTHERLY 35RS.



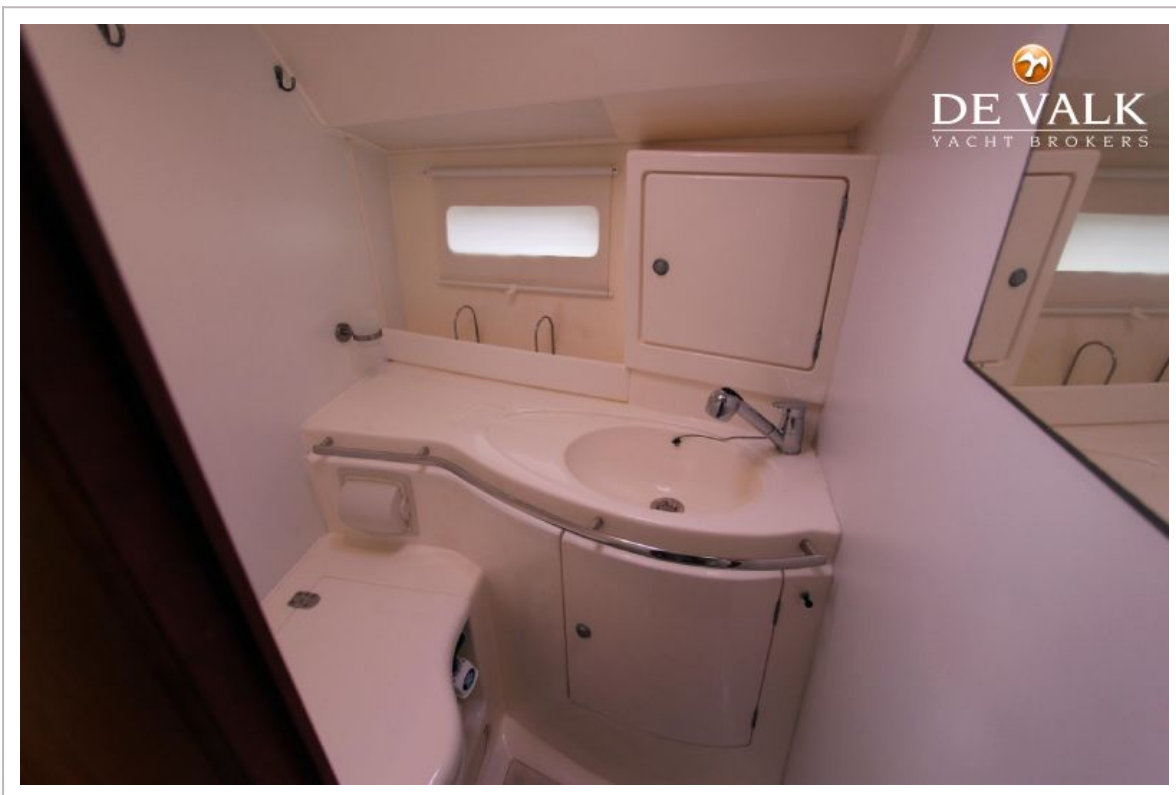
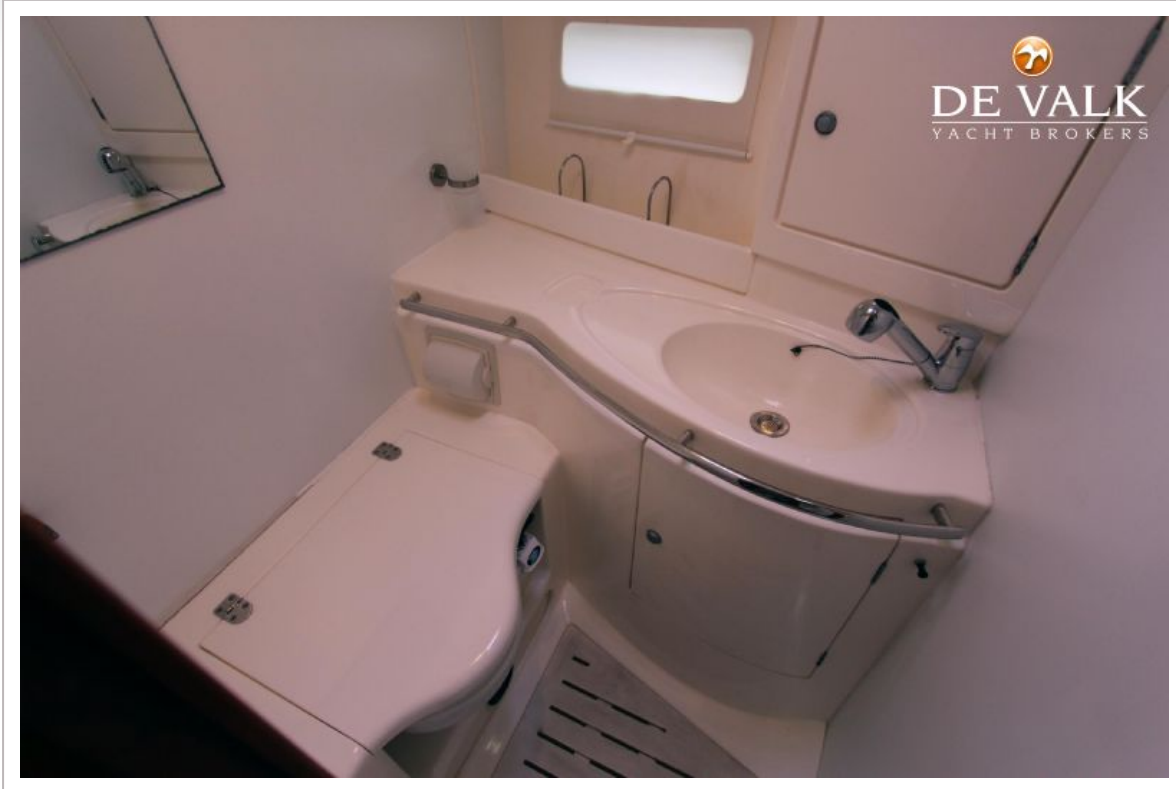
SOUTHERLY 35RS.



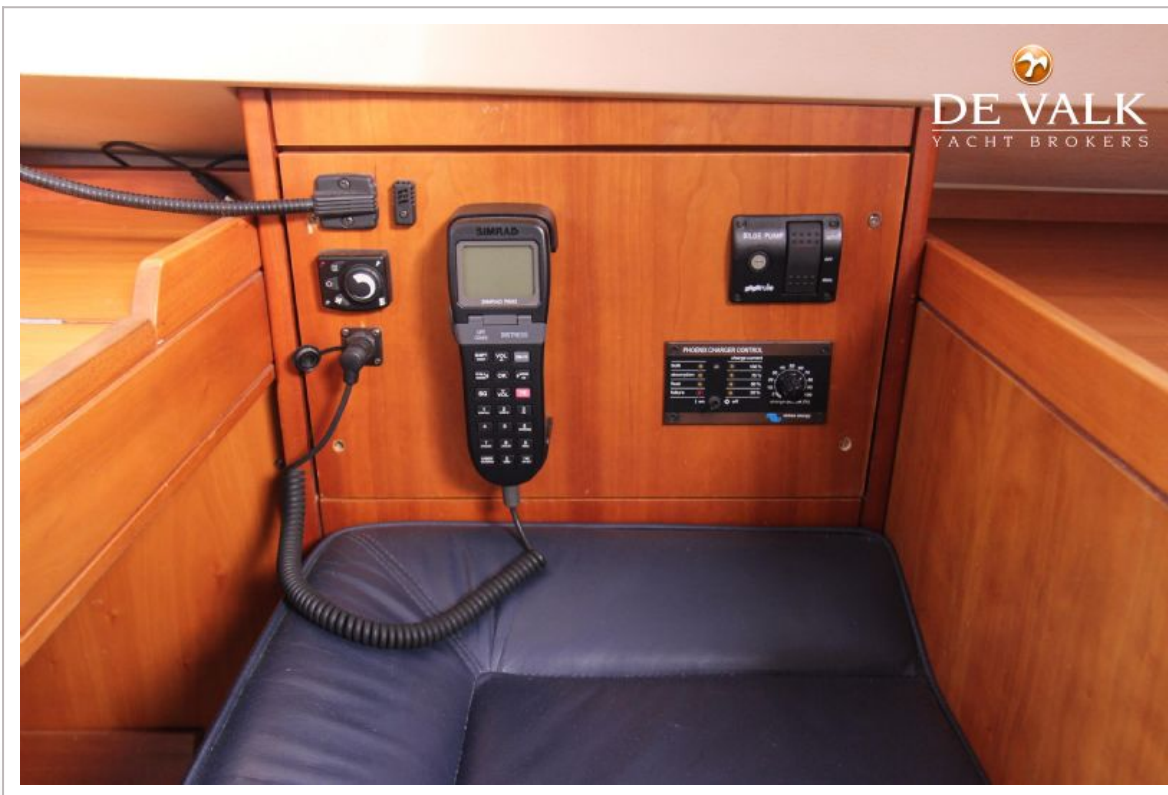
SOUTHERLY 35RS.



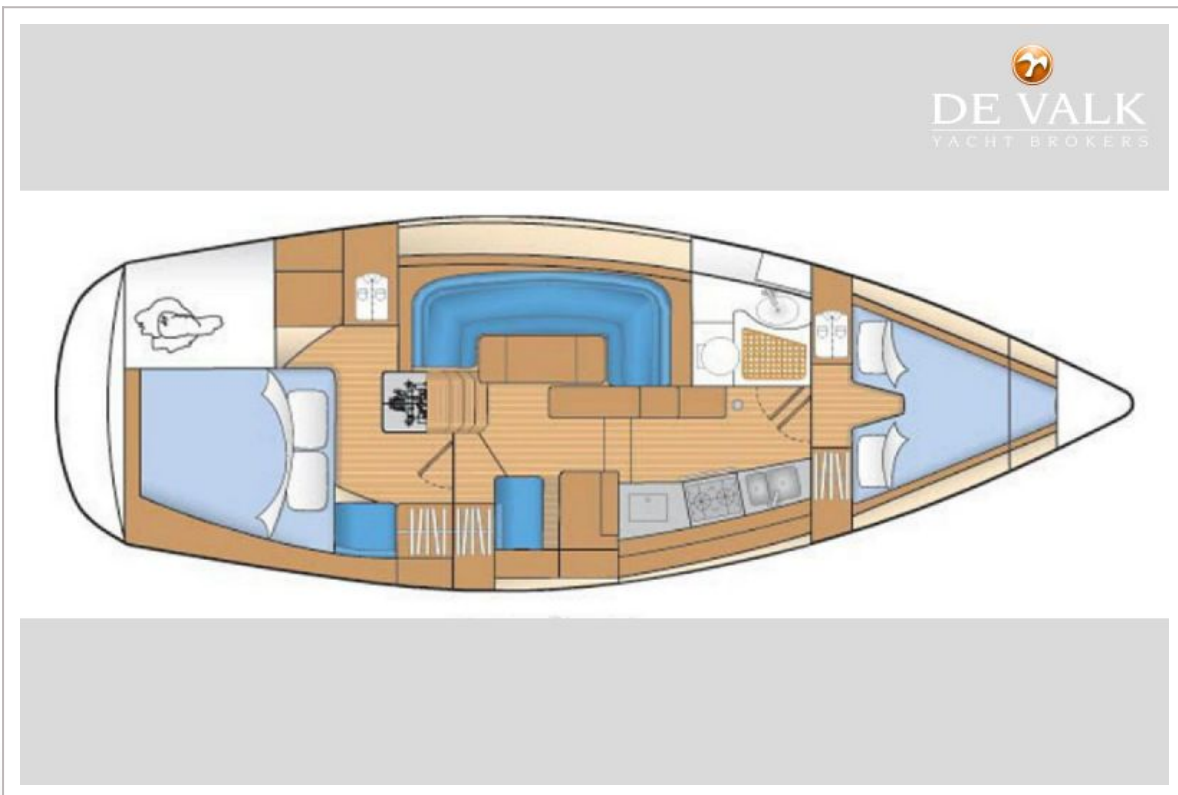
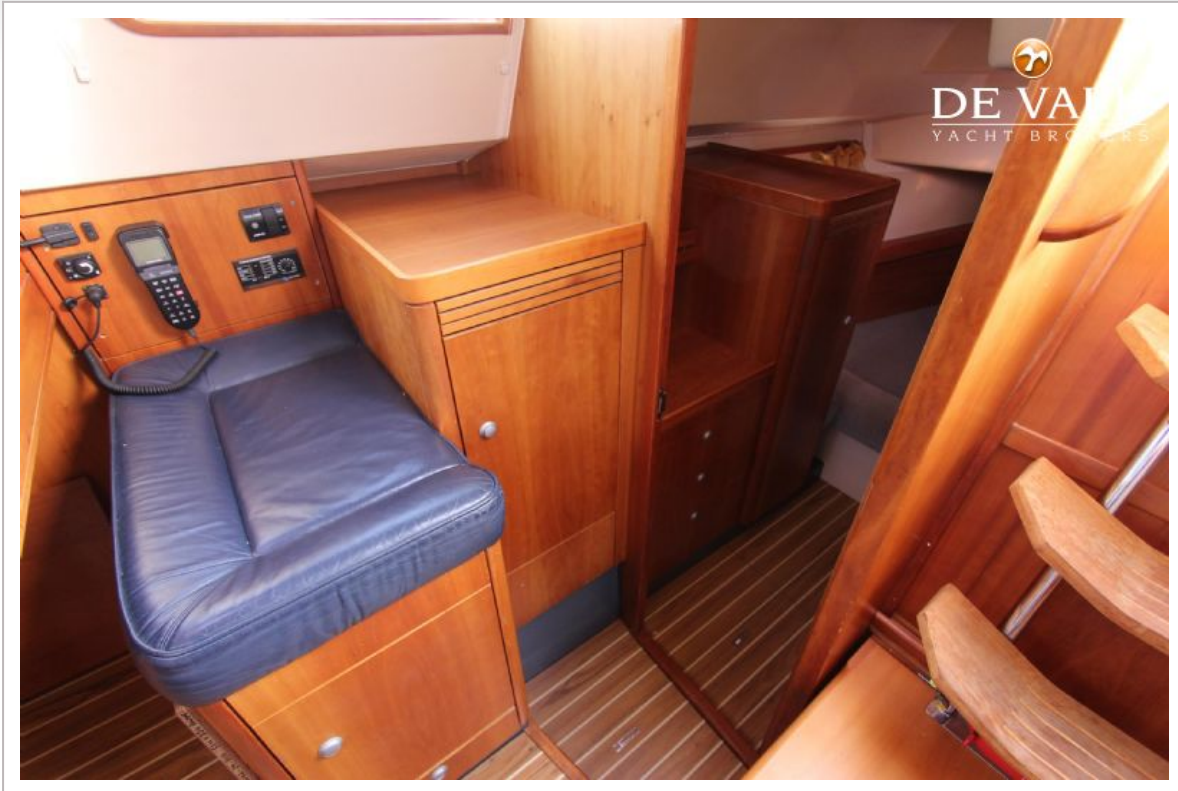
SOUTHERLY 35RS.



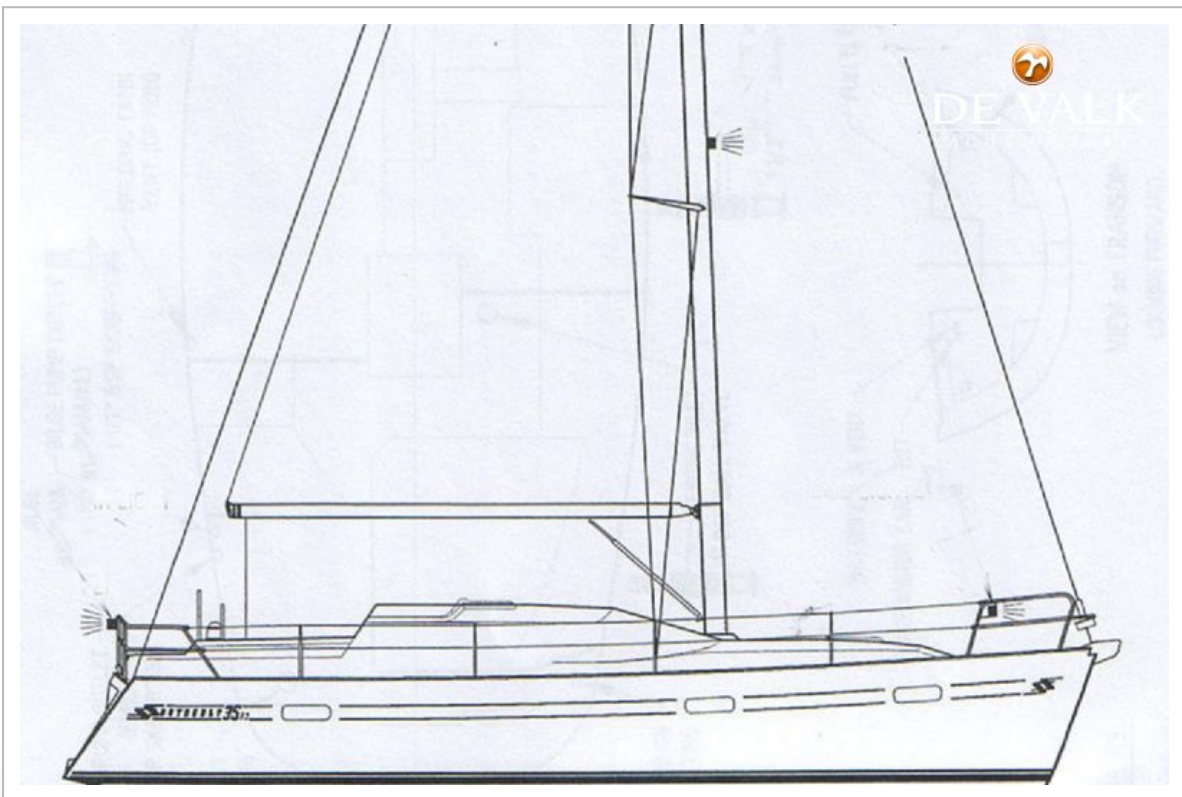
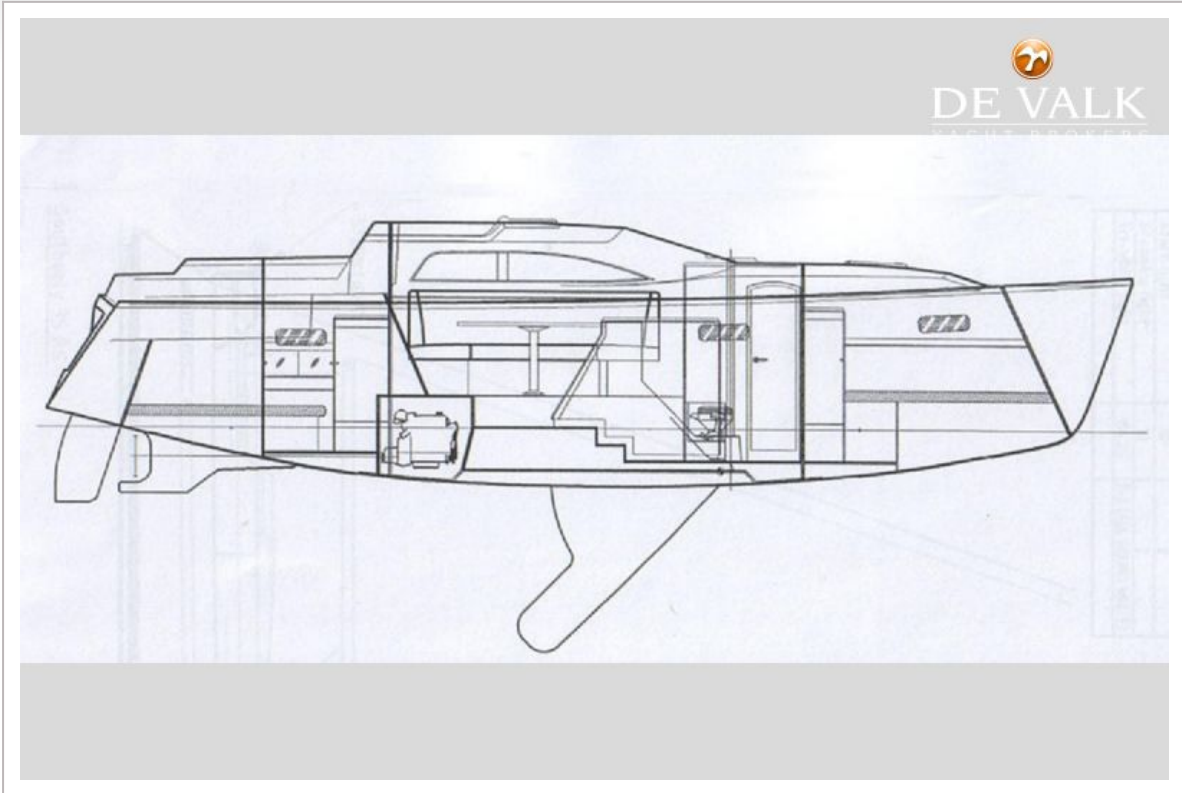
SOUTHERLY 35RS.



SOUTHERLY 35RS.



SOUTHERLY 35RS.



SOUTHERLY 35RS.



SOUTHERLY 35RS.

