



DE VALK
YACHT BROKERS



HUNTER 336



DE VALK
YACHT BROKERS

BROKERAGE | CHARTER | BERTHS | FINANCE | INSURANCE | YACHT MANAGEMENT

HUNTER 336

BROKER'S COMMENTS

This could be the right choice for sailors who prefer comfortable cruising. The fine quality and superb comfort is reflected in the nice interior and professional sailing equipment. Modern teak wooden interior, saloon with private front and aft cabin, aft cabin with extra-wide queen size berth, 4 +2 berths. The present owner invested more than 20K Euro in the last years; new navigation equipment an many more renewals and improvements. Easy to sail and maneuvers with her big main, small headsail and well proportioned engine . To be seen ashore at De Valk Yachtbrokers in Sint Annaland .

Ger Bayens

SPECIFICATIONS

Dimensions	10.20 x 3.54 x 1.37 (m)	Builder	Hunter Yachts
Built	1996	Cabins	2
Material	GRP	Berths	6
Engine(s)	1 x Yanmar 3GM30F diesel	Hp/Kw	27.00 (hp), 19.85 (kw)
Asking price	sold (VAT)	Lying	at sales office

CONTACT

Sales office	De Valk Sint Annaland B.V.	Telephone	+31 (0)166 601 000
Address	Koelhuisweg 4 4697 RM Sint Annaland NL	E-mail	sintannaland@devalk.nl

DISCLAIMER

These particulars are given in good faith as supplied but cannot be guaranteed.



GENERAL

Model	HUNTER 336
Type	sailing yacht
LOA (m)	10,20
LWL (m)	8,70
Beam (m)	3,54
Draft (m)	1,37
Air draft (m)	17,07
Headroom (m)	1,93
Year built	1996
Builder	Hunter Yachts
Country	U.S.A.
Designer	Warren R.Luhrs
Displacement (t)	5
Ballast (tonnes)	cast iron 1,8
Hull material	GRP
Hull colour	white
Hull shape	round-bilged
Keel type	bulb keel
Superstructure material	GRP
Rubbing strake	rubber
Deck material	GRP
Deck finish	non-skid moulded in
Superstructure deck finish	non-skid moulded in
Cockpit deck finish	non-skid moulded in
Dorades	yes
Window frame	aluminium
Window material	perspex
Portholes	yes
Radar arch	
Fuel tank (litre)	polyethylene 110



Level indicator (fuel tank)	unsure
Freshwater tank (litre)	polyethylene
Level indicator (freshwater)	unsure
Blackwater tank (litre)	polyethylene
Level indicator (blackwater)	yes
Blackwater tank extraction	deck extraction + pump
Wheel steering	mechanical
Emergency tiller	yes

ACCOMMODATION

Cabins	2
Berths	6
Interior	teak
Floor	teak and holly
Headroom saloon (m)	1,92
Heating	diesel ducted hot air Eberspacher (2016)
Chart table	yes
Aft Cabin	yes
Dinette	yes
Dinette to convert into berth	yes
Convertible berth	yes
Galley	yes
Countertop	plastic
Sink	
Cooker	calor gas Hillerange
Oven	yes
Microwave	Electrolux 220V
Fridge	Isotherm 12V
Hot water system	220V + engine
Water pressure system	electrical
Owners cabin	double bed



Bed length (m)	2,10 x 1,90
Wardrobe	hanging and shelves
Bathroom	shared
Toilet	shared
Toilet system	manual
Wash basin	in the bathroom
Shower	shared
Guest cabin 1	v-bed
Bed length (m)	2,00
Wardrobe	hanging and shelves
Bathroom	shared
Toilet	shared
Toilet system	manual
Wash basin	in the bathroom
Shower	shared

MACHINERY

No of engines	1
Make	Yanmar
Type	3GM30F
HP	27,00
kW	19,85
Fuel	diesel
Maximum speed (kn)	6,5
Cruising speed (kn)	5,5
Engine cooling system	freshwater heat exchanger
Drive	shaft
Engine controls	bowden cable
Gearbox	mechanical
Propeller type	fixed
Propeller blades	2



Propeller shaft material	stainless steel
Shaft lubrication	water
Manual bilge pump	yes
Electric bilge pump	yes
Electrical installation	12V/220V
Start battery	Optima 50 Ah (2015)
Service battery	2x 102 Ah (2015)
Battery charger	Mastervolt Chargemaster 12/50-3 (2015)
Inverter	Victron 12V 350va
Shorepower	with cable
Extra info	gas certificate expiring 6/2018 HISWA
Extra info	No engine hour counter

NAVIGATION

Compass	Ritchie
Depth sounder	Raymarine i70 (2015)
Log	Raymarine i70 (2015)
Windset	Raymarine i70 (2015)
VHF	Icom ic-m411
Autopilot	To be checked
Radar/GPS/plotter	Raymarine A75 (2015)
Electronic chart(s)	yes

EQUIPMENT

Sprayhood	yes
Cockpit cushions	yes
Cockpit table	yes
Bathing platform	yes
Boarding ladder	stainless steel
Deck shower	yes
Anchor	Fortress



Anchor chain	yes
Sea railing	wire
Grab rail (superstructure)	stainless steel
Railing side opening gates	yes
Lifebuoy	yes
Fenders	yes
Mooring lines	yes
TV	Samsung Flatscreen
TV receiver	not available
Radio-cd player	JVC Casette
Speakers in salon	yes
Clock - barometer	yes
Fire extinguisher	Expired
Extra info	Scanstrut aluminium radar pole
Extra info	Stern seats 2x

RIGGING

Rigging	fractional
Standing rigging	wire
Brand mast	Z-spar
Material mast	aluminium
Spreaders	2x
Mainsail cover	Lazy stagbag with lazyjacks
Fully battened mainsail	yes
High aspect	yes
Genoa furler	Furlex
Reefing System	quick-one-line-reefing
Boomvang	tackle
Multifunctional winches	halyard/sheet winches 2x Lewmar 30 selftailing



HUNTER 336



HUNTER 336



HUNTER 336



HUNTER 336



HUNTER 336



HUNTER 336



HUNTER 336



HUNTER 336



HUNTER 336



HUNTER 336



HUNTER 336



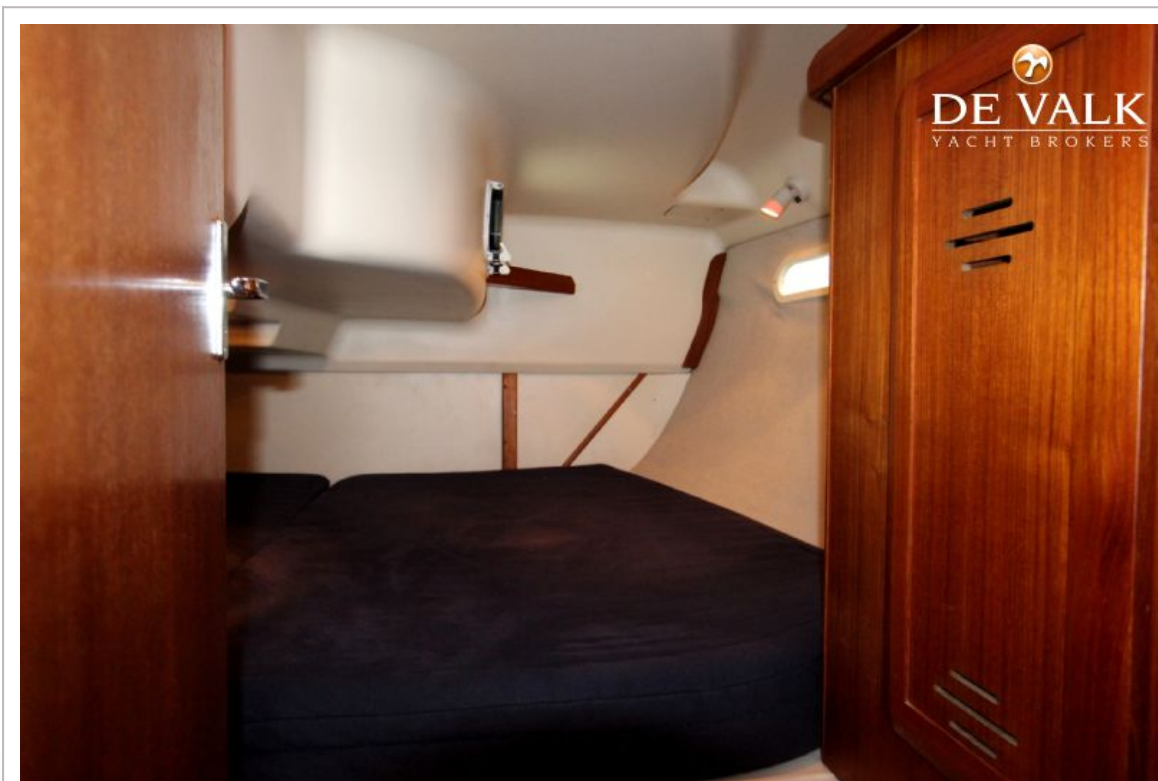
HUNTER 336



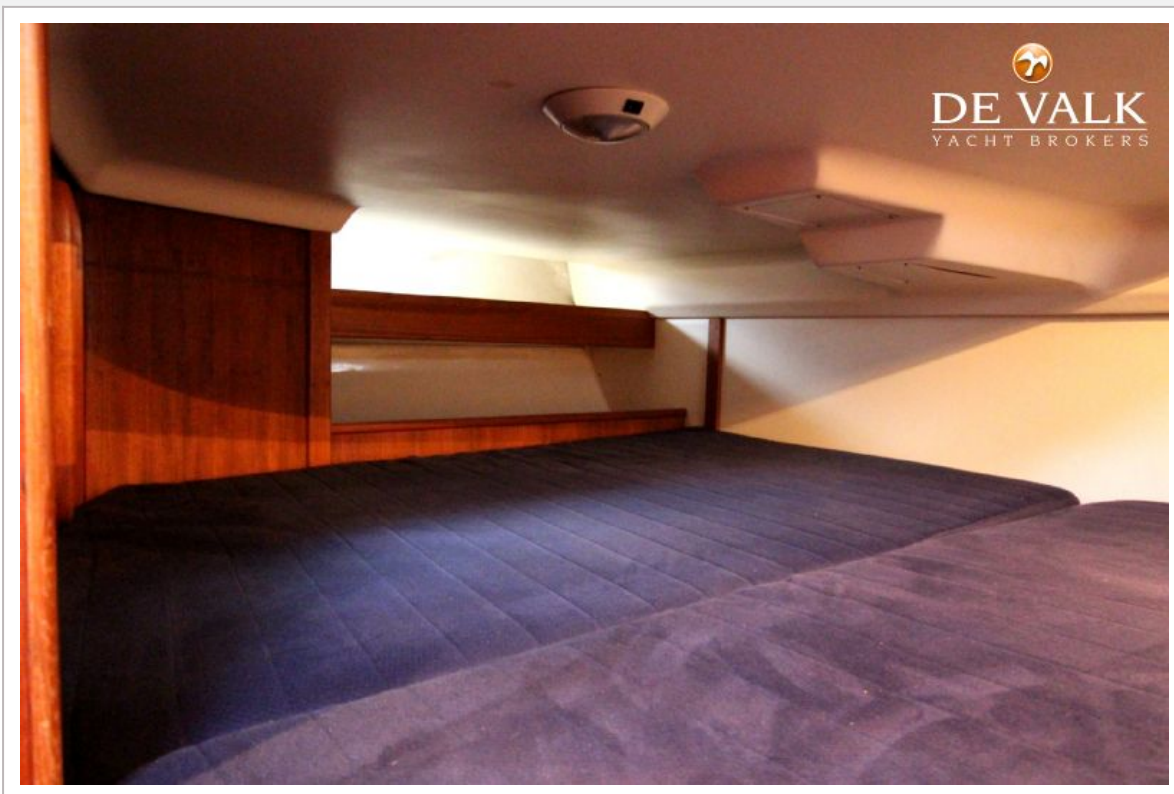
HUNTER 336



HUNTER 336



HUNTER 336



HUNTER 336



HUNTER 336



HUNTER 336

