



HUDSON & RICCI 40



BROKER'S COMMENTS

The Hudson & Ricci 40 was built by an Italian boutique shipyard and was designed by the renowned American naval architect Jim Wynne, guaranteeing excellent seakeeping and performance. This is the 'long stern' version with a cockpit bench and large stowage locker beneath. The interior is surprisingly spacious with a comfortable saloon, well equipped galley and two bedrooms with en suite bathrooms, all styled as you would expect from an Italian motor yacht. Several major upgrades have been done by the current owner. If you are looking for something exclusive, this is the yacht for you!

Nick Lanting

SPECIFICATIONS

Dimensions	13.16 x 4.26 x 1.25 (m)	Builder	Hudson & Ricci
Built	1990	Cabins	2
Material	GRP	Berths	4
Engine(s)	2 x Caterpillar 3208 TA diesel	Hp/Kw	2 x 375.00 (hp), 275.63 (kw)
Asking price	sold (VAT)	Lying	at sales office

CONTACT

Sales office	De Valk Sint Annaland B.V.	Telephone	+31 (0)166 601 000
Address	Koelhuisweg 4 4697 RM Sint Annaland NL	E-mail	sintannaland@devalk.nl

DISCLAIMER

These particulars are given in good faith as supplied but cannot be guaranteed.



GENERAL

Model	HUDSON & RICCI 40
Type	motor yacht
LOA (m)	13,16
Beam (m)	4,26
Draft (m)	1,25
Air draft (m)	4,20
Headroom (m)	2,00
Year built	1990
Builder	Hudson & Ricci
Country	Italy
Designer	Jim Wynne
Displacement (t)	12,1
Hull material	GRP
Hull colour	white
Hull shape	deep-V
Superstructure material	GRP
Rubbing strake	stainless steel
Deck material	GRP
Deck finish	non-skid moulded in
Superstructure deck finish	non-skid moulded in
Cockpit deck finish	teak
Antifouling (year)	2016
Window frame	stainless steel
Window material	glass
Deckhatch	yes
Portholes	stainless steel
Flybridge	yes
Flybridge cover	needs some repair
Radar arch	non collapsible
Fuel tank (litre)	stainless steel 600



Fuel tank 2 (litre)	stainless steel 600
Freshwater tank (litre)	2 x 355
Wheel steering	hydraulic
Inside helm position	headroom 1,91m
Flybridge helm position	hydraulic

ACCOMMODATION

Cabins	2
Berths	4
Interior	maple
Floor	teak and holly
Open cockpit	yes
Saloon	with sliding windows
Headroom saloon (m)	2,00
Heating	diesel ducted hot air Not functioning
Air-conditioning	reverse cycle airco Cruisair Zephyr (in saloon)
Sliding door to cockpit	3-part
Galley	yes
Countertop	corian
Sink	stainless steel
Cooker	calor gas 3 x electric + 1 x gas
Extractor	yes
Microwave/oven combi	Samsung
Fridge	yes
Hot water system	220V + engine
Water pressure system	electrical
Coffee maker	Magimix
Owners cabin	French bed Headroom 1,87m
Bed length (m)	2,00m x 1,50m
Wardrobe	hanging/drawers/shelves
Bathroom	en suite



Toilet	en suite
Toilet system	electric
Wash basin	in the bathroom
Shower	en suite Headroom 1,90m
Extra info	blue carpet, 18cm mattress, bed slats, 37cm TV
Guest cabin 1	twin single Headroom 1,90m
Bed length (m)	1,95m x 0,70m
Wardrobe	hanging
Bathroom	en suite
Toilet	en suite
Toilet system	electric
Wash basin	in the bathroom
Shower	en suite Headroom 1,88m
Extra info	blue carpet
Flybridge	teak floor

MACHINERY

No of engines	2
Make	Caterpillar
Type	3208 TA
HP	375,00
kW	275,63
Fuel	diesel
Maximum speed (kn)	26
Engine hours	1873
Engine cooling system	freshwater heat exchanger
Drive	V-drive
Engine controls	electrical & bowden cable Telefelx Morse KE-4a (2016)
Gearbox	hydraulic Twin Disc MG-507
Bowthruster	electric Vetus 3,0 kW
Exhaust	watercooled 2017



Propeller shaft material	stainless steel AISI 316 50 mm
Shaft lubrication	water
Electric bilge pump	yes
Electrical installation	12V / 220V
Generator	silent separator Mastervolt Whiper 3,5
Running hours generator	62
Batteries	6 x Mastervolt AGM 160Ah (2016)
Generator battery	Optima Redtop 50Ah (2016)
Bowthruster battery	2 x Mastervolt AGM 160Ah
Battery monitor	Mastervolt Masterview Easy MK II (2016)
Battery charger	Mastervolt Chargemaster 12/70-3 (2016)
Inverter	Mastervolt (2016)
Diode battery combiners	yes
Shorepower	with cable
Trimtabs	Lectrotab (2017)
Extra info	V-drive with extensions shafts
Extra info	2 x Optima Redtop spare batteries

NAVIGATION

Compass	yes
Compass on flybridge	yes
Depth sounder	VDO
Repeater	depthsounder VDO
VHF	not working Shipmate RS8100
VHF handheld	battery faulty Cobra Marine HH500
Autopilot	Robertson AP20
Radar	Raytheon R40X
Plotter/GPS	colour plotter Seiwa Barracude iGPS
Electronic chart(s)	C-Map NT EN-M070.05 NL+B
Navigation lights	yes
Searchlight	bulb not working



Extra info

at flybridge helm Eagle Accunav II plotter/GPS

EQUIPMENT

Fixed windscreen	yes
Cockpit cover	blue
Bathing platform	GRP with teak
Boarding ladder	yes
Deck shower	yes
Anchor	Bruce Stainless steel
Anchor chain	yes
Capstan	on anchor winch
Grab rail (superstructure)	stainless steel
Pulpit	yes
Lifebuoy	yes
Wiper	pantograph stainless steel 2 x
Horn	electric
Fenders	yes
Mooring lines	yes
Spare parts	yes
TV	saloon Samsung 55cm
TV receiver	DVB-T in Tv
Radio-cd player	Kenwood KDC-BT510U
Speakers in salon	2 x Kenwood
Fire extinguisher	saloon + cockpit 2,5 liter
Latest extinguisher survey	03/2017
Extra info	fender baskets 3 x
Extra info	2 x Kenwood loudspeaker to flybridge
Extra info	coachroof cushions



HUDSON & RICCI 40



HUDSON & RICCI 40



HUDSON & RICCI 40



HUDSON & RICCI 40



HUDSON & RICCI 40



HUDSON & RICCI 40

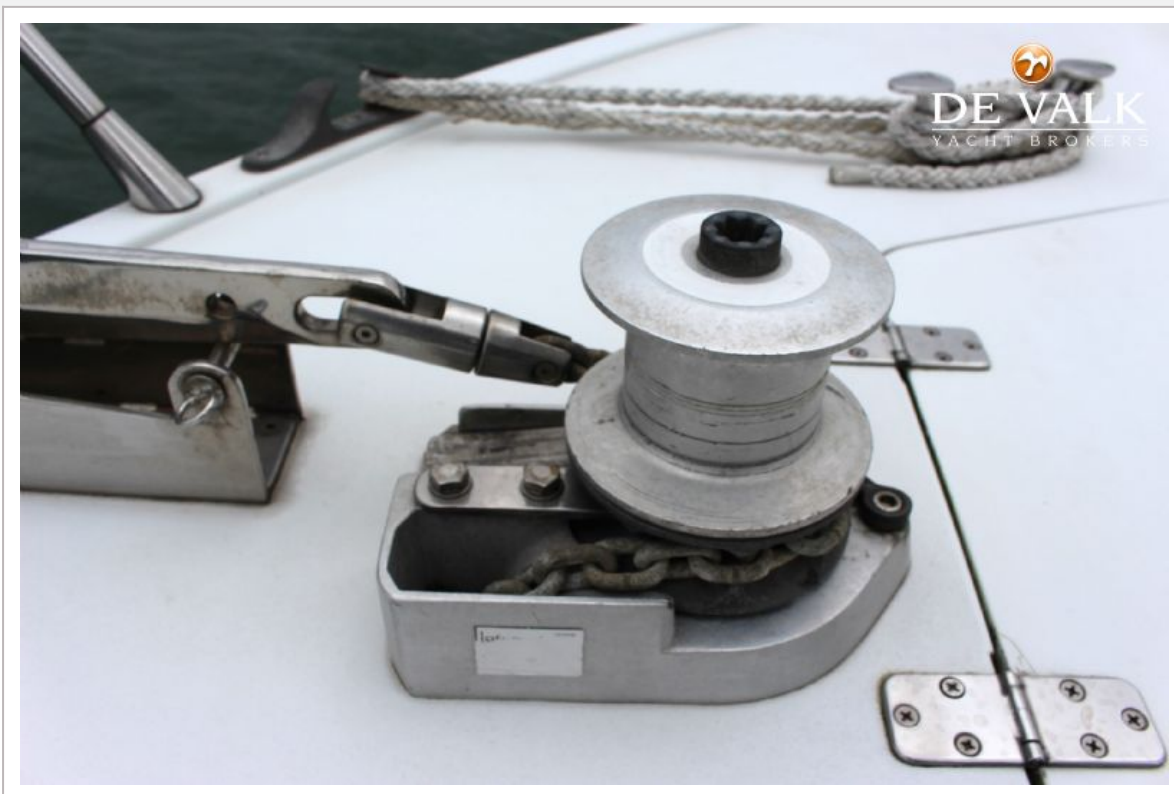


HUDSON & RICCI 40



HUDSON & RICCI 40







HUDSON & RICCI 40



HUDSON & RICCI 40

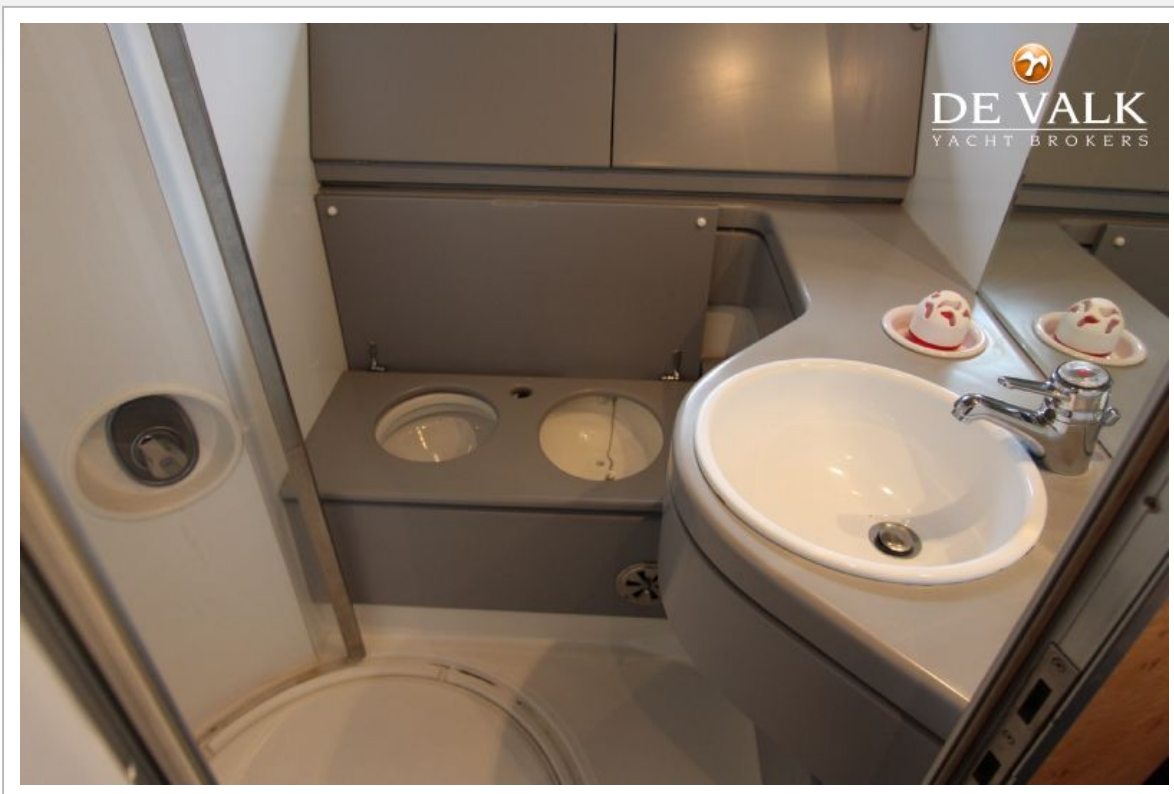


HUDSON & RICCI 40

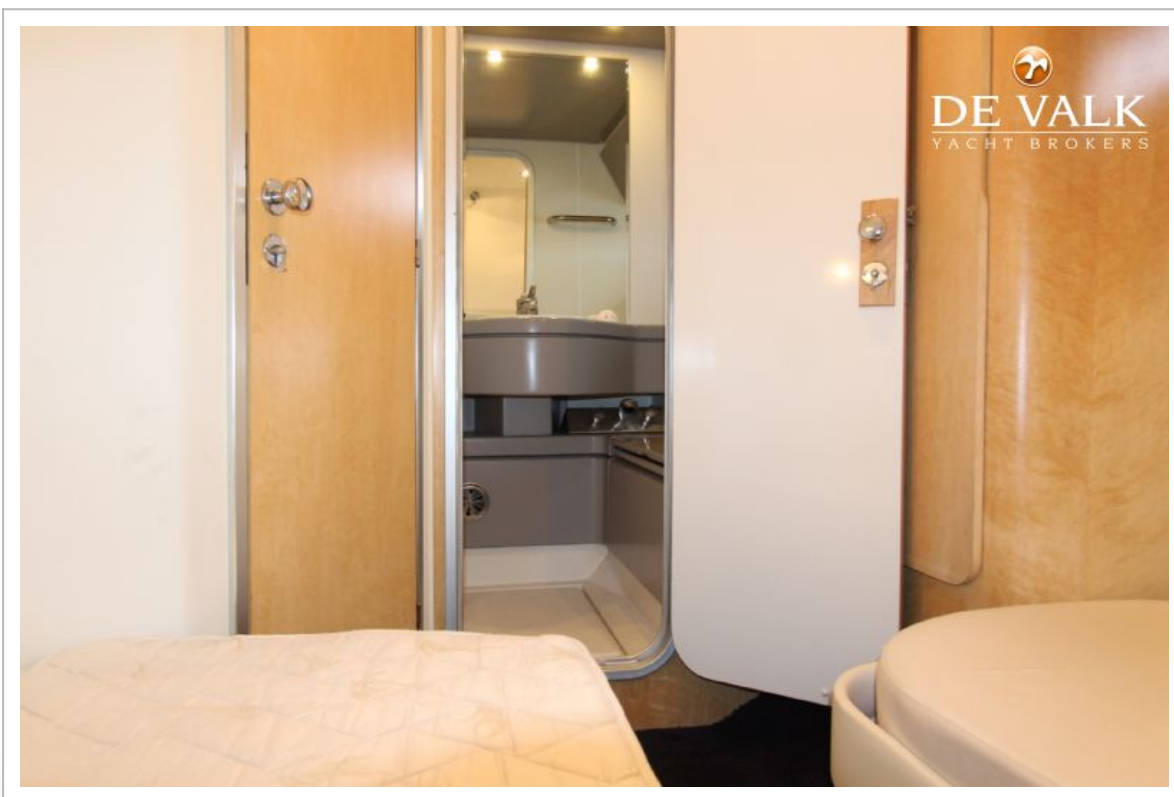
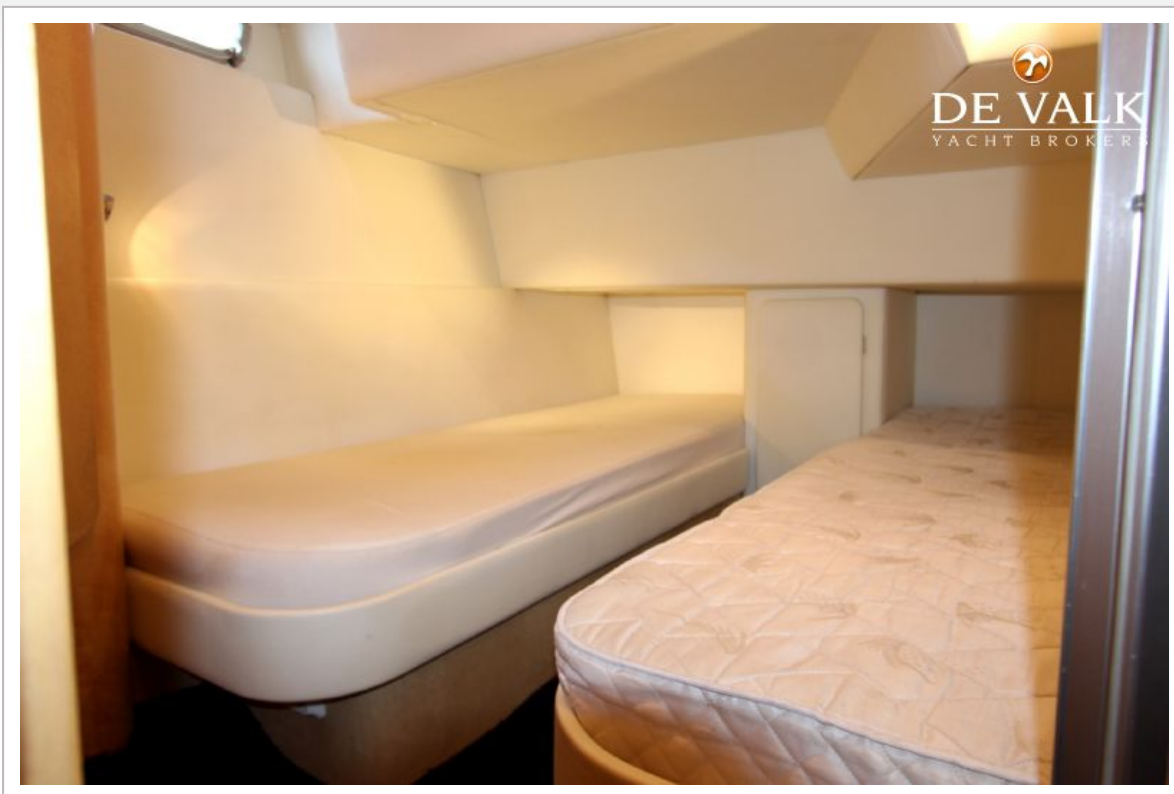


HUDSON & RICCI 40





HUDSON & RICCI 40





HUDSON & RICCI 40



