



DE VALK  
YACHT BROKERS



## DEHLER 41 CRUISING



DE VALK  
YACHT BROKERS

## BROKER'S COMMENTS

Dehler is not only renowned for their well performing yachts but also for their unflawed quality. This particular yacht is especially interesting because of her recent upgrades and good specification. The Dehler 41 Cruising is the result of over 30 years experience in yacht building, featuring details that make this yacht as fast as she is also safe and easy to handle.

*Nick Lanting*

## SPECIFICATIONS

<b>Dimensions</b>	12.45 x 3.90 x 1.95 (m)	<b>Builder</b>	Dehler Yachtbau GmbH
<b>Built</b>	1996	<b>Cabins</b>	3
<b>Material</b>	GRP	<b>Berths</b>	6
<b>Engine(s)</b>	1 x Yanmar 3JH2-TE diesel	<b>Hp/Kw</b>	48.00 (hp), 35.28 (kw)
<b>Asking price</b>	sold (VAT )	<b>Lying</b>	at sales office

## CONTACT

<b>Sales office</b>	De Valk Sint Annaland B.V.	<b>Telephone</b>	+31 (0)166 601 000
<b>Address</b>	Koelhuisweg 4 4697 RM Sint Annaland NL	<b>E-mail</b>	sintannaland@devalk.nl

## DISCLAIMER

These particulars are given in good faith as supplied but cannot be guaranteed.



## GENERAL

Model	DEHLER 41 CRUISING
Type	sailing yacht
LOA (m)	12,45
LWL (m)	11,05
Beam (m)	3,90
Draft (m)	1,95
Air draft (m)	20,40
Headroom (m)	1,94
Year built	1996
Builder	Dehler Yachtbau GmbH
Country	Germany
Designer	Judel & Vrolijk
Displacement (t)	8,9
Ballast (tonnes)	cast iron and lead 3,3
CE norm	A
Hull material	GRP
Hull colour	white
Hull shape	round-bilged
Keel type	fin keel
Superstructure material	GRP
Rubbing strake	rubber
Deck material	GRP
Deck finish	non-skid paint 2014
Superstructure deck finish	non-skid moulded in
Cockpit deck finish	teak
Antifouling (year)	2018
Dorades	2 x
Window frame	aluminium
Window material	polycarbonate
Deckhatch	yes



Portholes	aluminium
Fuel tank (litre)	140
Level indicator (fuel tank)	yes
Freshwater tank (litre)	2 x 200
Level indicator (freshwater)	yes
Blackwater tank (litre)	60 (forward toilet)
Blackwater tank extraction	deck extraction + uw line
Wheel steering	rack & pinion
Outside helm position	rack & pinion
Emergency tiller	yes
More info on hull	underwaterhull stripped to bare gelcoat 2018
More info on paintwork	deck repainted 2014
Extra info	fuel tank removed and cleaned 2017
Extra info	Emergency fuel tank (24 l) in case main tank is contaminated

## ACCOMMODATION

Cabins	3
Berths	6
Interior	mahogany
Floor	teak and holly
Open cockpit	yes
Saloon	yes
Headroom saloon (m)	1,94
Heating	diesel ducted hot air Eberspächer (not always working, needs servicing)
Navigation center	yes
Chart table	yes
Dinette	yes
Sliding door to cockpit	yes
Galley	yes
Countertop	plastic



Sink	stainless steel
Cooker	calor gas 3-burner
Oven	yes
Fridge	80 l
Hot water system	220V + engine 20 l boiler
Water pressure system	electrical
Owners cabin	double bed Headroom 1,87m
Bed length (m)	2,00 x 1,40
Wardrobe	hanging and shelves
Bathroom	en suite Headroom 1,86m
Toilet	en suite 2017
Toilet system	manual
Wash basin	in the bathroom
Shower	en suite
Extra info	bed slats
Guest cabin 1	double bed Headroom 1,94m
Bed length (m)	2,00 x 1,20
Wardrobe	hanging and shelves
Bathroom	shared Headroom 1,92m
Toilet	shared 2017
Toilet system	manual
Wash basin	in the bathroom
Shower	shared
Extra info	new mattress 2017
Guest cabin 2	double bed Headroom 1,94m
Bed length (m)	2,00 x 1,20
Wardrobe	hanging and shelves
Extra info	new matras 2017
Extra info	flyscreens
Extra info	new seacocks for toilet aft & washbasin forward 2016



## MACHINERY

No of engines	1
Make	Yanmar
Type	3JH2-TE
HP	48,00
kW	35,28
Fuel	diesel
Year installed	1996
Maximum speed (kn)	8
Cruising speed (kn)	7
Engine hours	2717
Engine cooling system	freshwater heat exchanger
Drive	shaft
Engine controls	bowden cable
Gearbox	mechanical Hurth
Exhaust	watercooled
Propeller type	feathering
Propeller blades	3
Propeller shaft material	stainless steel
Shaft lubrication	water
Manual bilge pump	yes
Electric bilge pump	yes
Electrical installation	12V & 220V
Batteries	yes
Start battery	60 Ah
Service battery	semi traction 2 x 225 Ah
Battery monitor	yes
Battery charger	yes
Shorepower	with cable

## NAVIGATION



Compass	yes
Electric compass	in autopilot
Depth sounder	B&G (2015)
Log	B&G (2015)
Windset	B&G (2015)
VHF	Icom IC-M601
Autopilot	Raymarine i70/EVO200/Type 1 Drive (2016)
Rudder angle indicator	in autopilot
Plotter/GPS	Raytheon RL70 (not working)
Radar/GPS/plotter	Lowrance HDS8M (2014)
Navtex	Furuno NX-300 (not working)
AIS receiver	Class B
AIS transponder	Class B
Navigation lights	yes
Extra info	all instruments are NMEA2000 connected

## EQUIPMENT

Fixed windscreen	yes
Sprayhood with grab rail	yes
Cockpit cover	yes
Cockpit table	yes
Bathing platform	foldable
Boarding ladder	stainless steel
Deck shower	hot & cold
Anchor	Bruce
Anchor chain	yes
Windlass	electrical Lewmar
Davits	stainless steel 2014
Davits controls	manual
Sea railing	stainless steel
Grab rail (superstructure)	teak



Pushpit	yes
Pulpit	yes
Life raft	container Seago
Life raft (pers)	4
Last life raft survey	05/2016
Fenders	yes
Mooring lines	yes
Radio-cd player	Kenwood
Cockpit speakers	yes
Speakers in salon	yes
Fire extinguisher	2 x

## RIGGING

Rigging	fractional
Standing rigging	wire 2016
Brand mast	Dehler
Material mast	aluminium
Spreaders	2 x 2
Mainsail	touring laminate UK Sails 49 m2 (2010)
Mainsail cover	Dehler lazybag/lazyjacks
Battcars	yes
Fully battened mainsail	yes
Jib	32 m2 (1996)
High aspect	Van Vliet 105% HA 39 m2 Dacron (2009)
Genoa furler	Harken MK4-2
Gennaker	110 m2 (2002) + Harken Furlex roller (2016)
Self tacking jib installation	yes
Reefing System	quick-one-line-reefing 2 x
Backstay adjuster	tackle Plus aft winch
Boomvang	gasspring
Primary sheet winch	2 x Harken 48ST 2-speed





**Multifunctional winches**

**Extra info**

**Extra info**

halyard/sheet winches 2 x Lewmar 48STE electric

Lewmar blocks

Spinlock jammers



# DEHLER 41 CRUISING



# DEHLER 41 CRUISING





# DEHLER 41 CRUISING





# DEHLER 41 CRUISING





# DEHLER 41 CRUISING





# DEHLER 41 CRUISING





# DEHLER 41 CRUISING





# DEHLER 41 CRUISING



# DEHLER 41 CRUISING





# DEHLER 41 CRUISING



# DEHLER 41 CRUISING





# DEHLER 41 CRUISING



# DEHLER 41 CRUISING

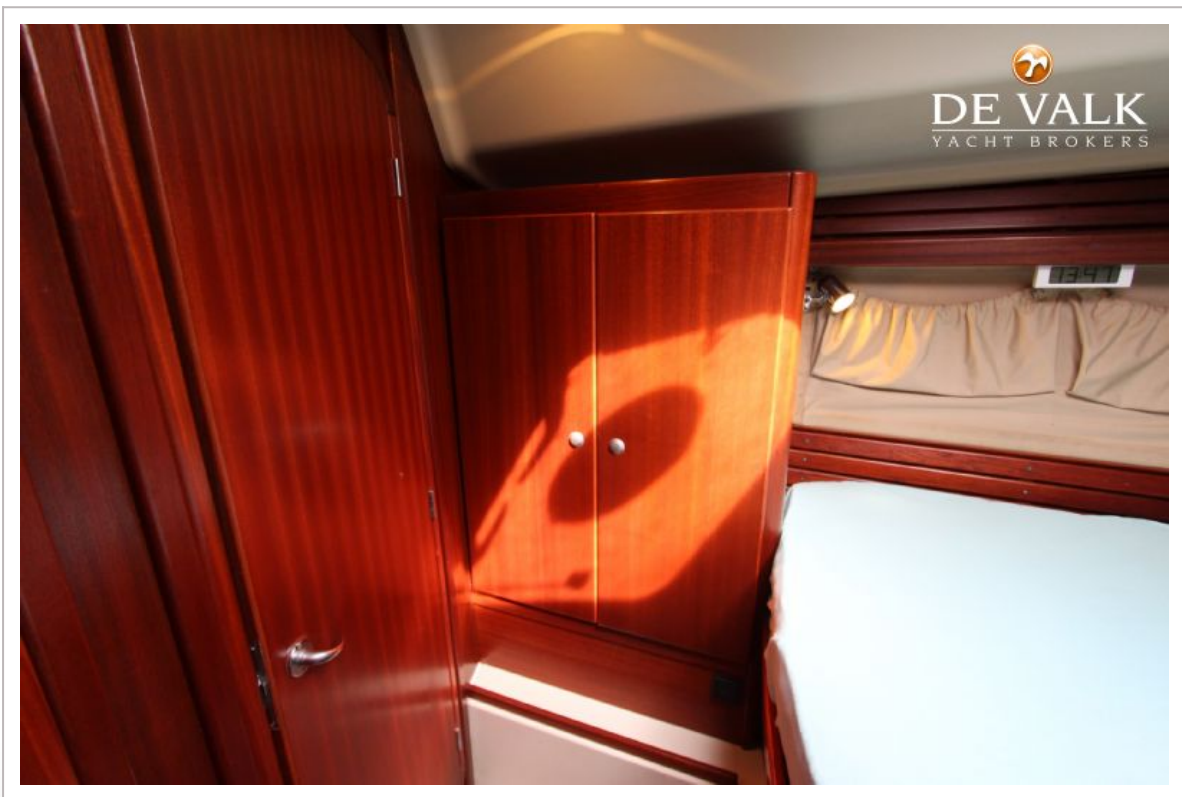




# DEHLER 41 CRUISING

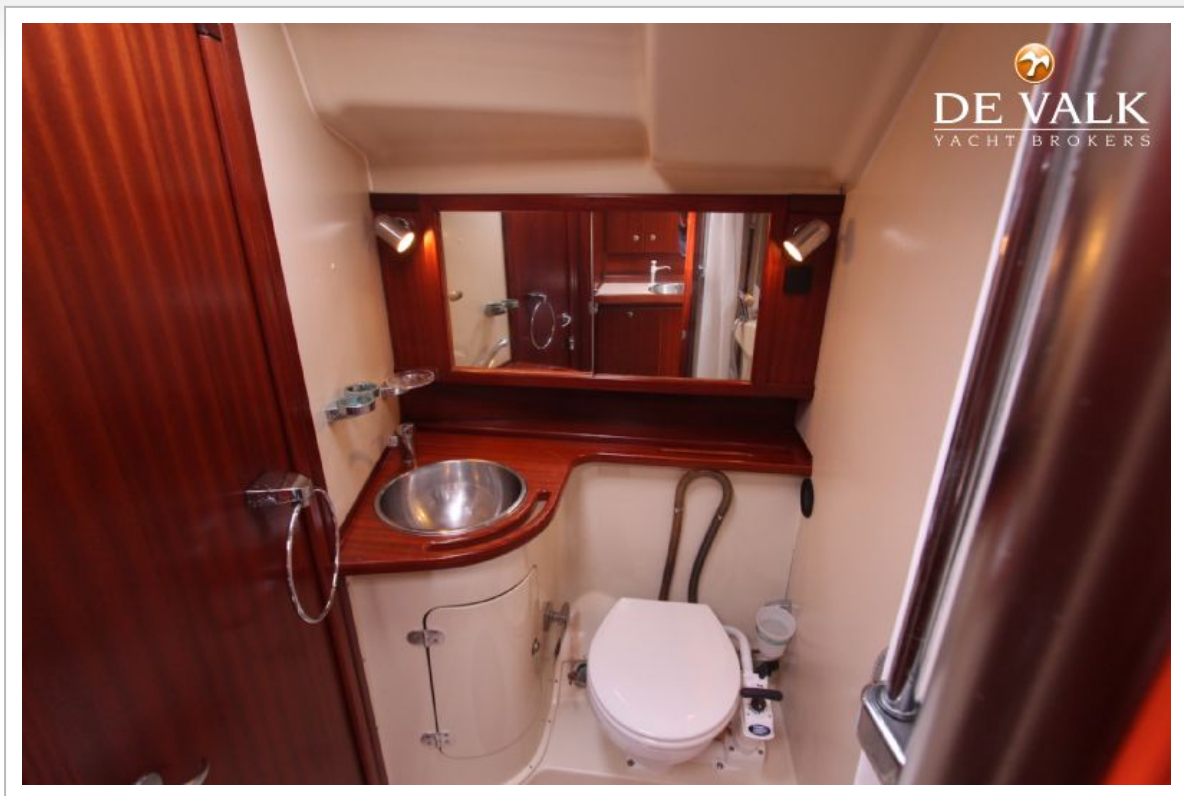


# DEHLER 41 CRUISING

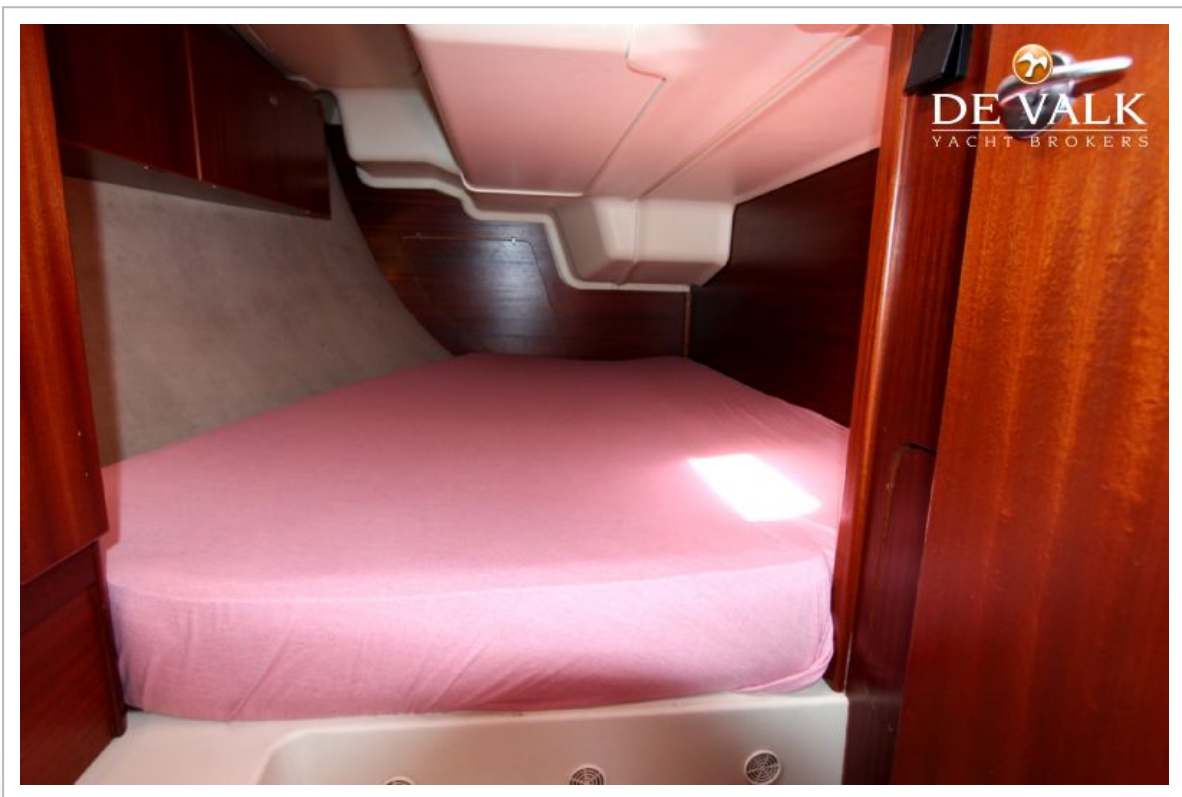




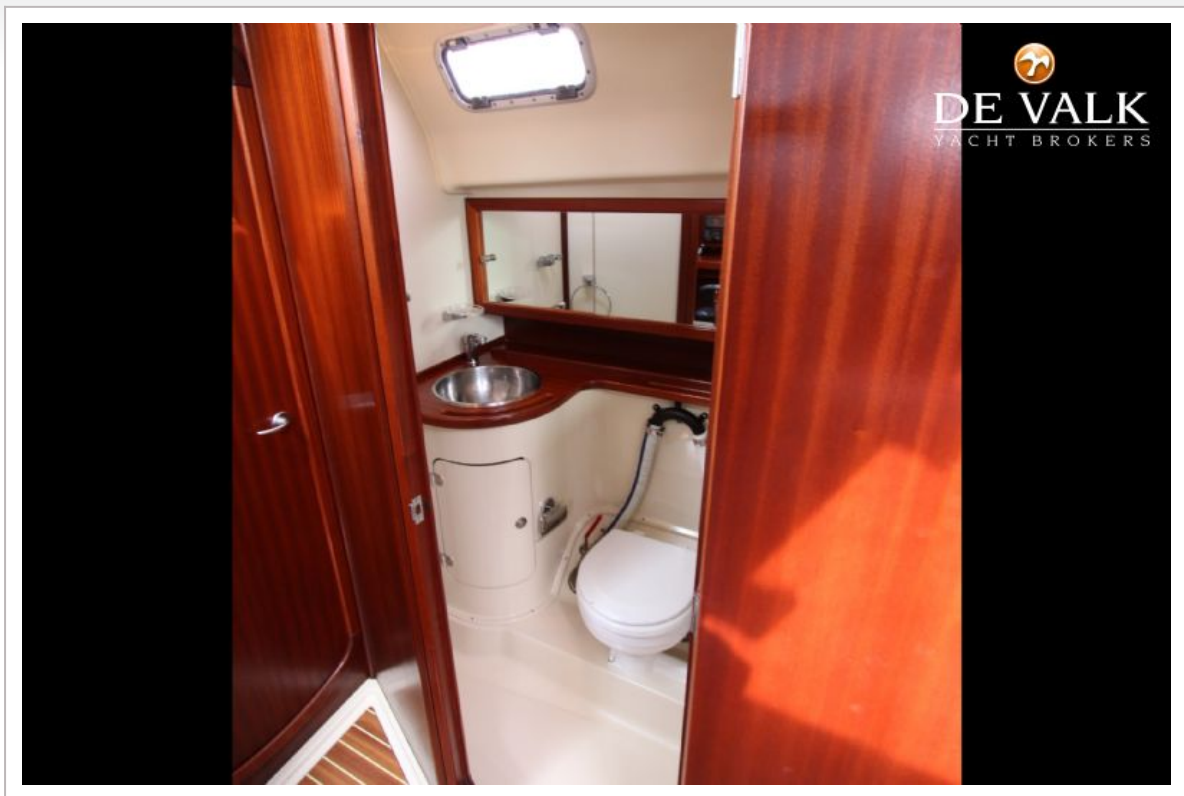
# DEHLER 41 CRUISING



# DEHLER 41 CRUISING

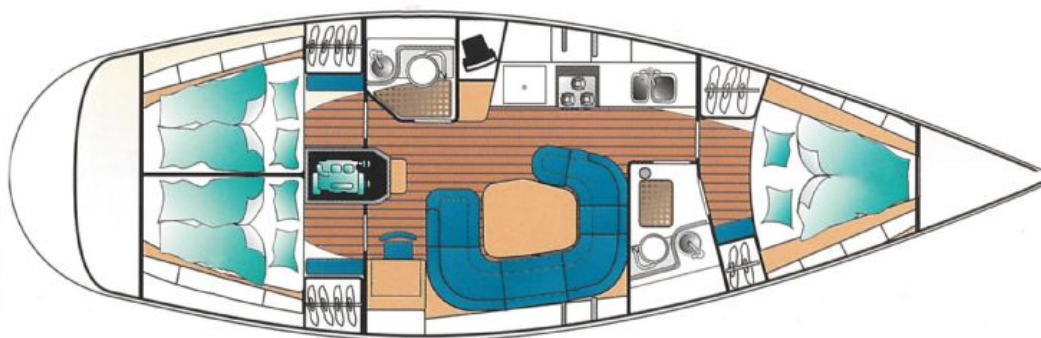


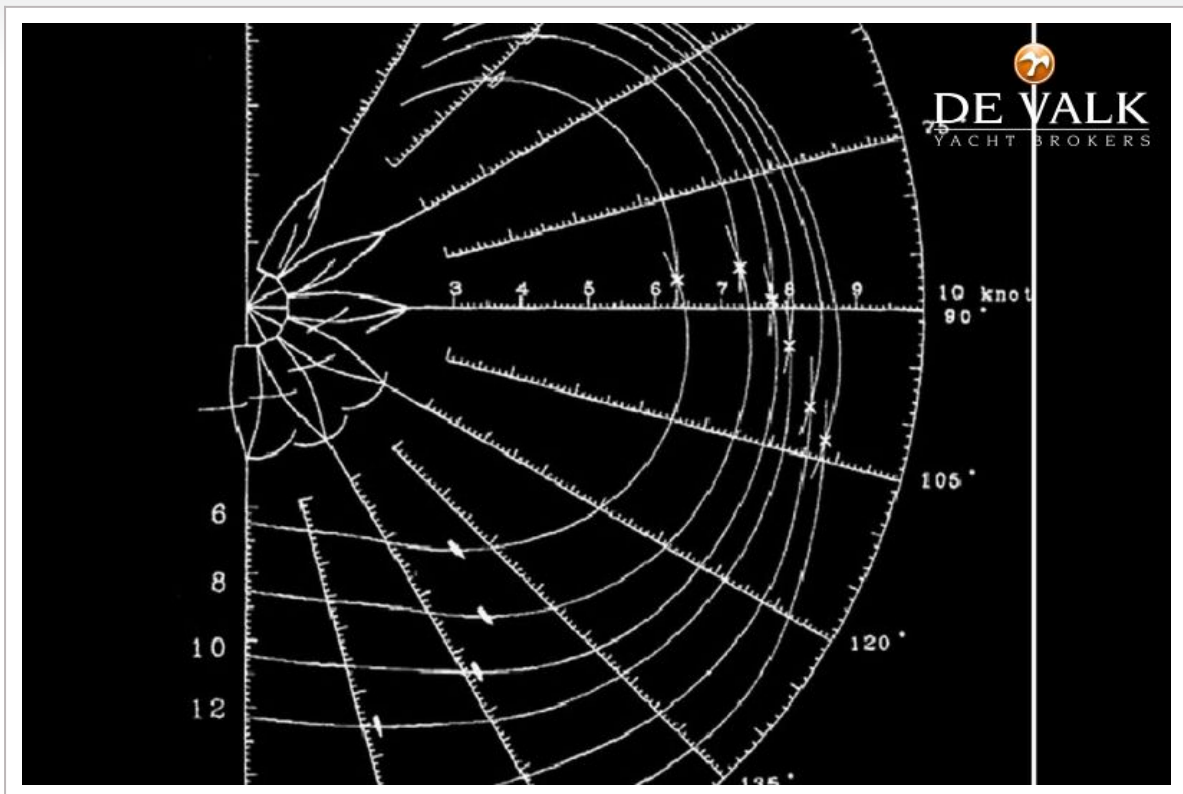
# DEHLER 41 CRUISING





# DEHLER 41 CRUISING





**Dehler**

