



BAVARIA 46 CRUISER



BAVARIA 46 CRUISER

BROKER'S COMMENTS

We have found again a very popular Bavaria 46 in owners version and again in splendid condition. Always privately owned and lightly used. This is a spotless, well maintained yacht. Have a look at the engine room: less than 1200 engine hours tell us the light usage. She comes with good set of sails, fantastic new 2019 Webasto hot water heating system, Alcantara upholstery in salon and great overall inventory. Special attention for the Scanstrut radar mast with cardanic antenna mounting for horizontal beam presentation. The dingy will be sold separately and is not included.

Willem Koopmans

SPECIFICATIONS

Dimensions	14.40 x 4.35 x 1.85 (m)	Builder	Bavaria Yachtbau GmbH
Built	2005	Cabins	4
Material	GRP	Berths	10
Engine(s)	1 x Volvo Penta DS-55-C diesel	Hp/Kw	55.00 (hp), 40.42 (kw)
Asking price	sold (VAT)	Lying	contact sales office

CONTACT

Sales office	De Valk Costa Blanca	Telephone	+34 96 50 21 569
Address	Costa Blanca Region 03730 Javea Alicante ES	E-mail	costablanca@devalk.nl

DISCLAIMER

These particulars are given in good faith as supplied but cannot be guaranteed.



BAVARIA 46 CRUISER

GENERAL

Model	BAVARIA 46 CRUISER
Type	sailing yacht
LOA (m)	14,40
Beam (m)	4,35
Draft (m)	1,85
Air draft (m)	19,20
Headroom (m)	2,15
Year built	2005
Builder	Bavaria Yachtbau GmbH
Country	Germany
Designer	J & J Design
Displacement (t)	11
CE norm	A
Hull material	GRP
Hull colour	white
Hull shape	round-bilged
Keel type	fin keel
Superstructure material	GRP
Deck material	GRP
Deck finish	teak Good and neat condition
Superstructure deck finish	non-skid moulded in
Cockpit deck finish	teak
Antifouling (year)	March 2020
Dorades	yes
Window frame	aluminium
Window material	perspex
Portholes	yes
Fuel tank (litre)	polyethylene 210
Level indicator (fuel tank)	yes
Freshwater tank (litre)	polyethylene 460, 2 tanks



BAVARIA 46 CRUISER

Greywater tank (litre)	stainless steel 2x, new hoses, totally smell free!
Wheel steering	cable steering Double
Emergency tiller	yes
More info on hull	Hull polished in 2019, deck and teak all high level condition
Extra info	Covers for bow thruster panel, winches, engine panel etc.
Extra info	New Jefa steering bearings 2020

ACCOMMODATION

Cabins	4
Berths	10
Interior	cherry
Floor	teak and holly
Saloon	2015 new Alcantara cushions in salon
Headroom saloon (m)	2,15
Heating	central hot water Webasto hot water heating 5 KW,all cabins separate thermostat
Chart table	yes
Aft Cabin	Double
Dinette	yes
Galley	yes
Countertop	Duropol
Sink	stainless steel Double
Cooker	calor gas 2018 replaced Dometic Moonlight 2 burner
Oven	Dometic
Microwave	LG Intellwave
Fridge	Double 1 Danfoss BD 5 replaced in 2018
Hot water system	yes
Water pressure system	electrical
Coffee maker	yes
Owners cabin	French bed
Bed length (m)	2,15



BAVARIA 46 CRUISER

Wardrobe	hanging and shelves
Bathroom	en suite
Toilet	en suite
Toilet system	manual
Wash basin	in the bathroom
Shower	en suite
Guest cabin 1	double bed
Bed length (m)	2,10
Wardrobe	hanging and shelves
Bathroom	shared
Toilet	shared
Toilet system	manual
Wash basin	in the bathroom
Shower	shared
Guest cabin 2	double bed
Bed length (m)	2,10
Wardrobe	hanging and shelves
Bathroom	shared
Toilet	shared
Toilet system	manual
Wash basin	in the bathroom
Shower	shared
Guest cabin 3	bunk bed
Bed length (m)	2
Wardrobe	hanging and shelves
Bathroom	yes
Toilet	shared
Toilet system	manual
Wash basin	in the bathroom
Shower	shared



BAVARIA 46 CRUISER

MACHINERY

No of engines	1
Make	Volvo Penta
Type	DS-55-C
HP	55
kW	40,42
Fuel	diesel
Year installed	2005
Maximum speed (kn)	8
Cruising speed (kn)	7
Consumption (l/hr)	4
Engine hours	1132
Engine cooling system	freshwater heat exchanger
Drive	sail-drive
Saildrive seal	Replaced in 2018
Engine controls	bowden cable
Gearbox	mechanical
Engine controls	bowden cable
Bowthruster	electric SidePower SP 75
Exhaust	watercooled
Propeller type	Volvo Penta folding from 2015
Propeller blades	3
Manual bilge pump	yes
Electric bilge pump	yes
Electrical installation	12 volt
Start battery	New 2020 1 ExidL 60 amp
Service battery	New 2020 5 Exide 85 amp
Bowthruster battery	2020 2 batteries, elerical system improved
Windlass battery	See bowthruster
Battery monitor	Victron battery watch
Battery charger	Victron 12/60



BAVARIA 46 CRUISER

Inverter	Victron Phoenix 12/800
Shorepower	with cable
Extra info	Freshwater North European yacht until 2018

NAVIGATION

Compass	Double Shuunto
Electric compass	On autopilot
Depth sounder/log	Raymarine ST 60
Windset	Raymarine ST 60
Repeater	Raymarine ST 60 multi
VHF	Raymarine Ray 240
VHF handheld	Raymarine
Autopilot	Raymarine ST 6000
Rudder angle indicator	On autopilot
Radar	2010 2 Kw on mast with cardanic support
Radar/GPS/plotter	Raymarine E 80
AIS transponder	Raymarine 650 transponder
Navigation lights	yes
Extra info	Raymarine E 80 radar picture also visible on TV inside
Extra info	Scanstrut cardanic radar mast

EQUIPMENT

Sprayhood	2010, new windows 2017
Cockpit cover	Over wheel steering, table, winches, bow thruster & engine panel
Bimini	yes
Cockpit table	Varnished
Bathing platform	yes
Boarding ladder	yes
Gangway	Wood
Deck shower	yes
Anchor	Rocna New, 33 kg



BAVARIA 46 CRUISER

Anchor chain	90 mtr 8 mm
Windlass	Tigre 1200 watt with new 2019 engine
Dinghy	NOT included
Outboard	NOT included
Outboard support	yes
Deck crane	For outboard
Life raft	container
Life raft (pers)	8
Last life raft survey	2018
Lifebuoy	Ocean anchor buoy
Radar reflector	yes
Fenders	yes
Mooring lines	yes
Spare parts	yes
TV	2x, 1 x Tomsons + 1 x Acer
Radio-cd player	Pioneer
iPod connection	yes
Surround Sound System	Great Blaupunkt speakers with subwoofer
Sub-woofer	yes
Cockpit speakers	2 x Gallo
Speakers in salon	Surround
Clock - barometer	yes
Fire extinguisher	Needs check

RIGGING

Rigging	cutter 7/8
Standing rigging	Replaced 2010
Brand mast	Seldén Replaced for in mast sail type in 2010
Material mast	aluminium
Spreaders	2
Mainsail	New 2010 North Sails



BAVARIA 46 CRUISER

Mainsail cover	In mast system
Stoway mast	yes
Genoa	2010 North Sails with UV band
Genoa furler	yes
Gennaker	150 m2 North Sails 2010
Reefing System	main in-mast furling
Backstay adjuster	yes
Boomvang	mechanical and tackle Selden Rodcick
Genoa sheetwinches	Lewmar 50 ST
Multifunctional winches	halyard/sheet winches On roof Lewmar 44 ST
Winchcovers	yes
Gennaker pole	aluminium
Extra info	Windex
Extra info	Sails and canvas checked in 2019



BAVARIA 46 CRUISER



BAVARIA 46 CRUISER



BAVARIA 46 CRUISER



BAVARIA 46 CRUISER



BAVARIA 46 CRUISER



BAVARIA 46 CRUISER



BAVARIA 46 CRUISER



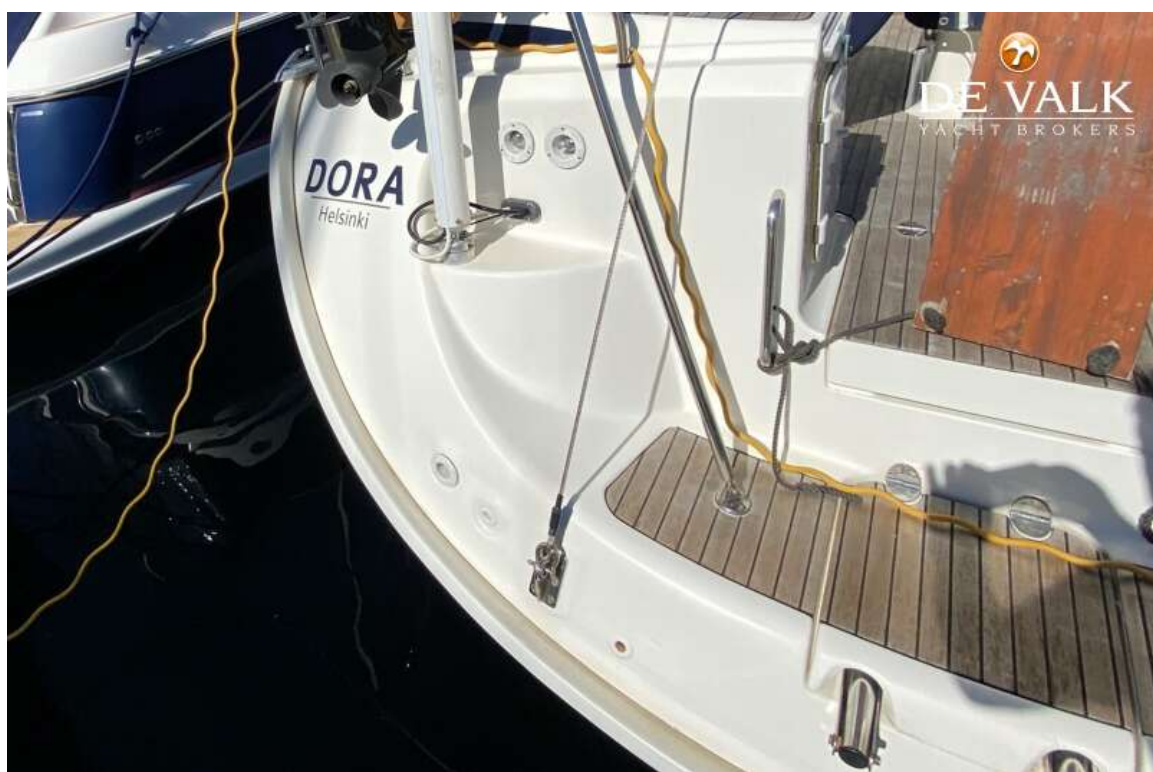
BAVARIA 46 CRUISER



BAVARIA 46 CRUISER



BAVARIA 46 CRUISER



BAVARIA 46 CRUISER



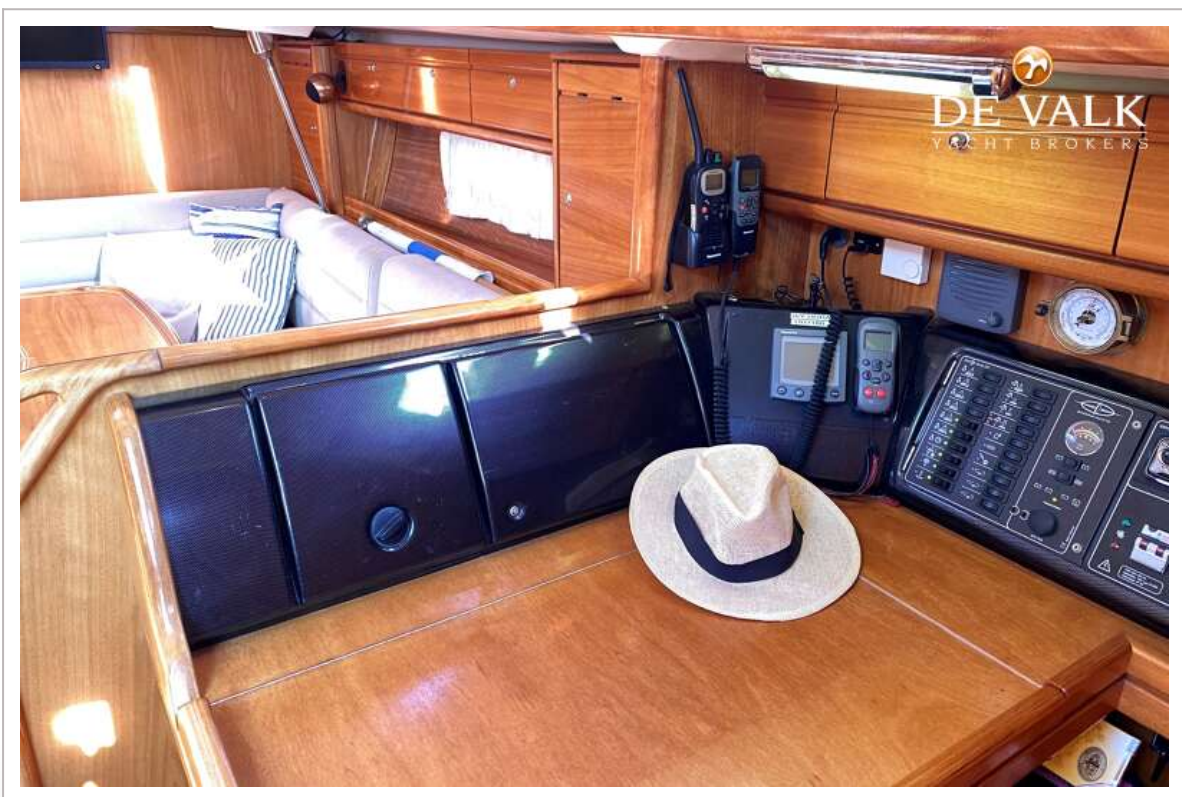
BAVARIA 46 CRUISER



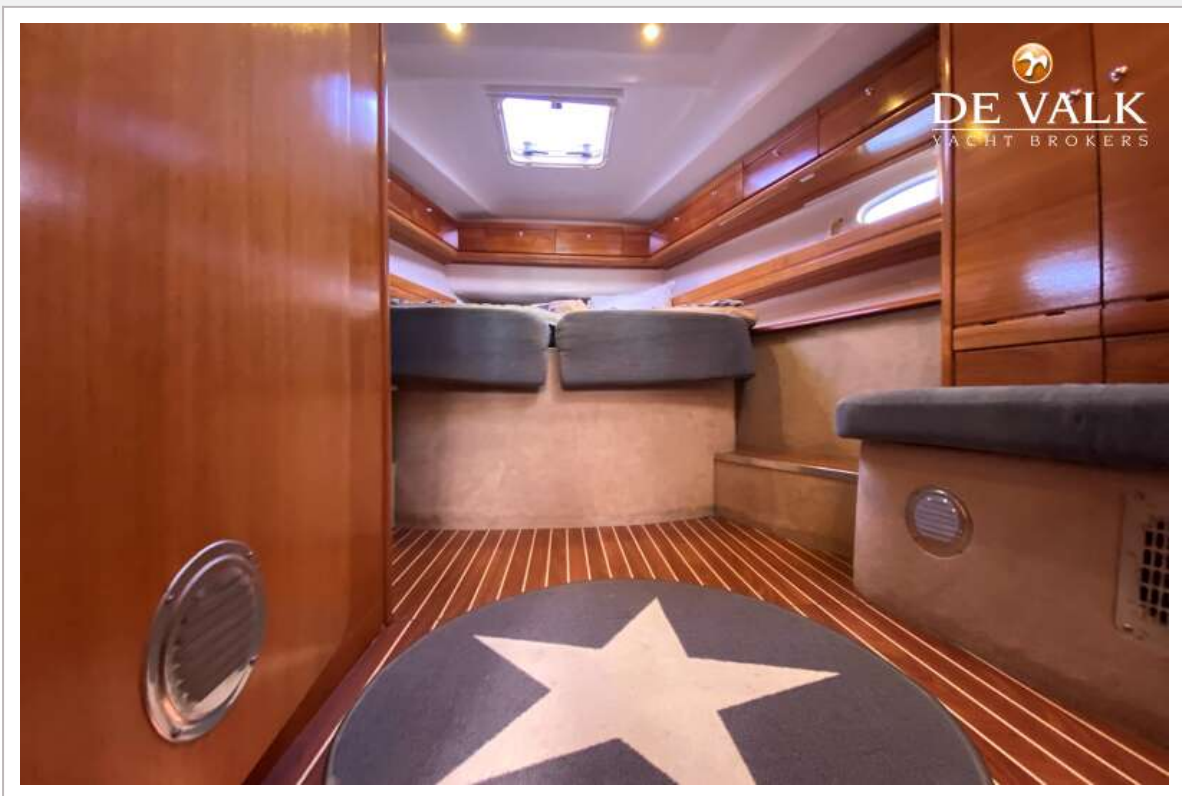
BAVARIA 46 CRUISER



BAVARIA 46 CRUISER



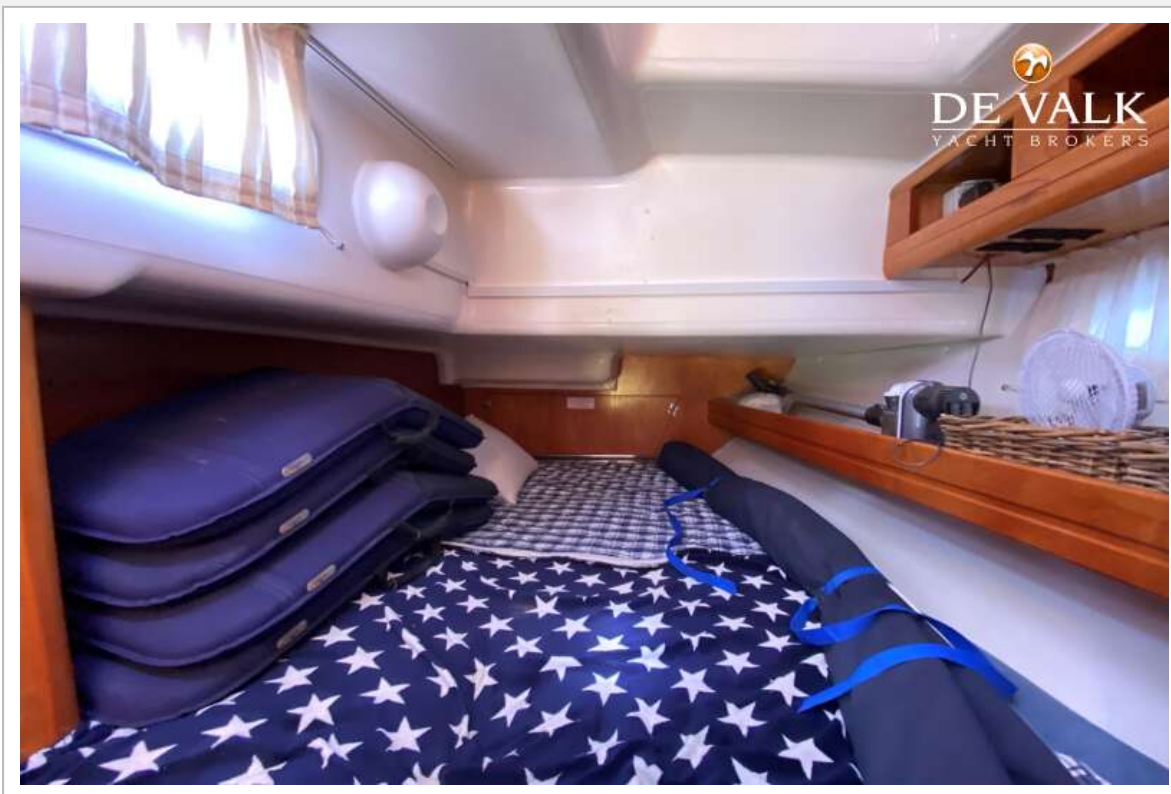
BAVARIA 46 CRUISER



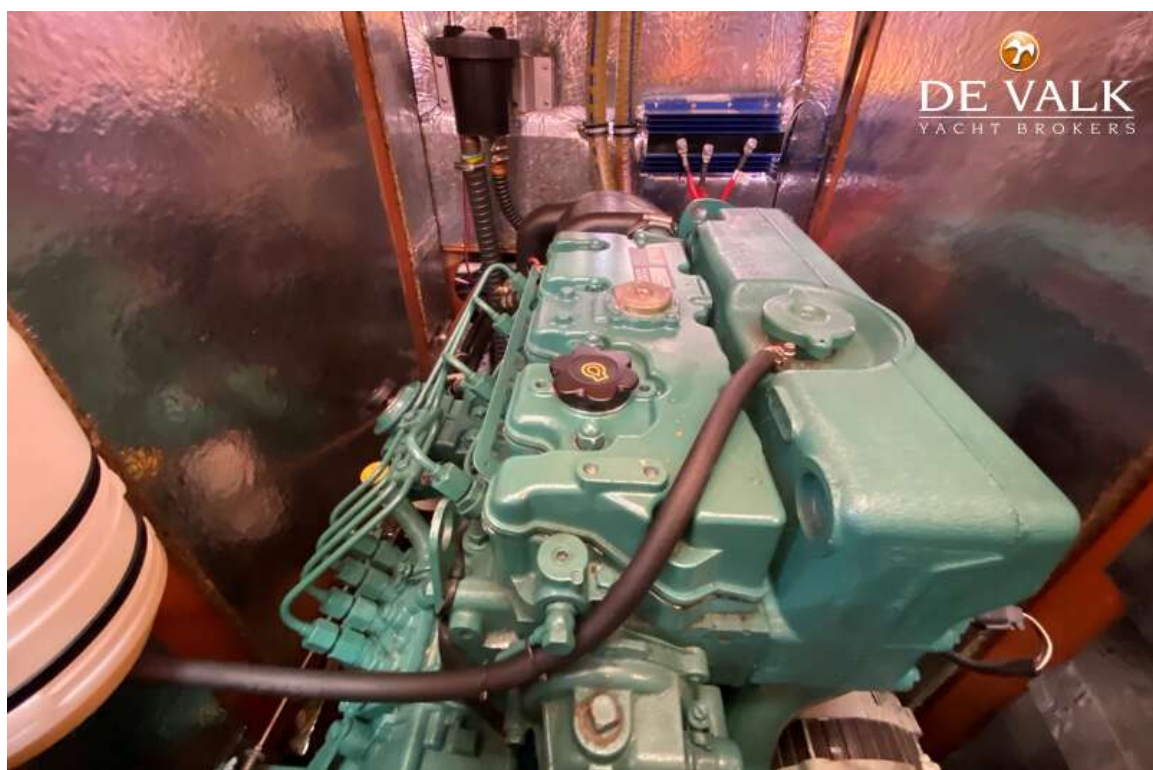
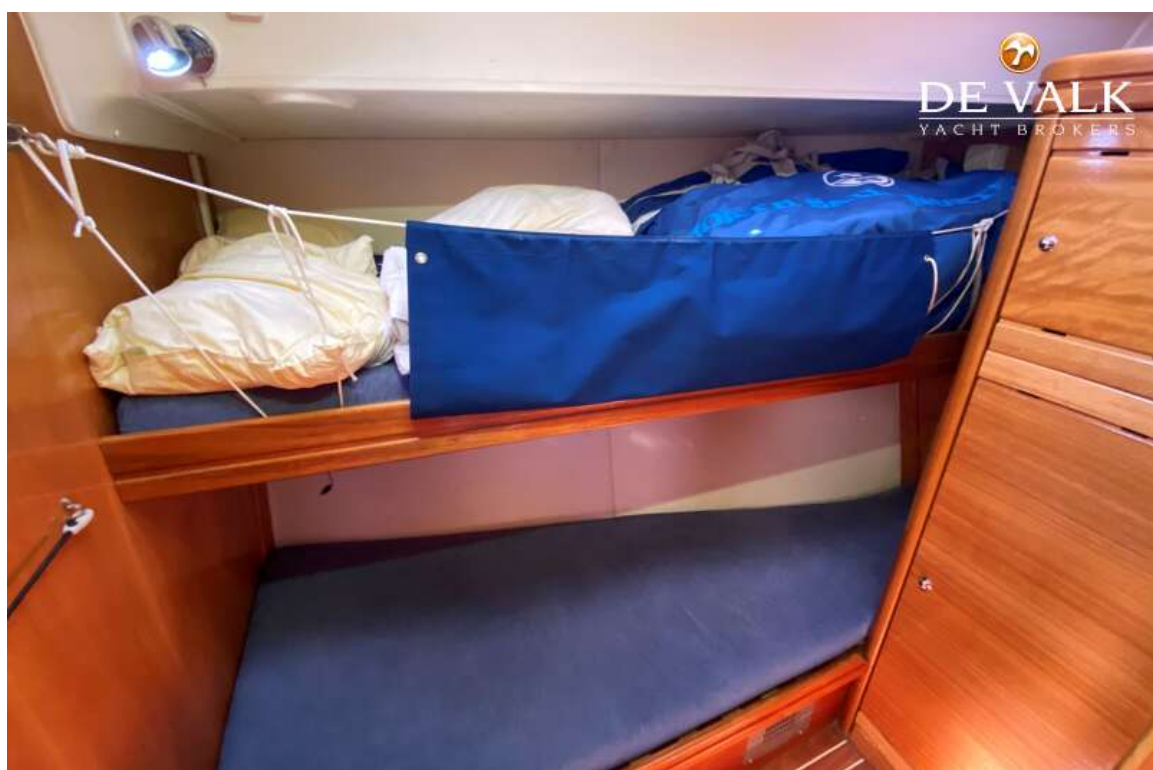
BAVARIA 46 CRUISER



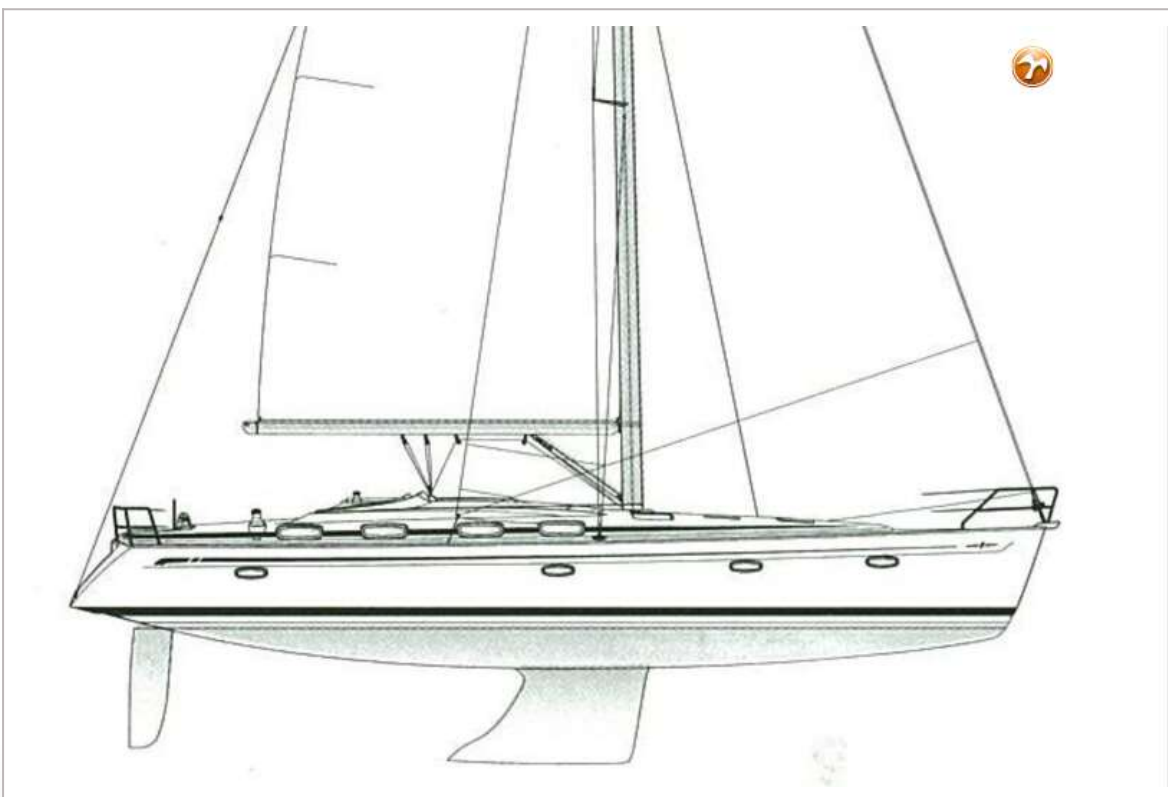
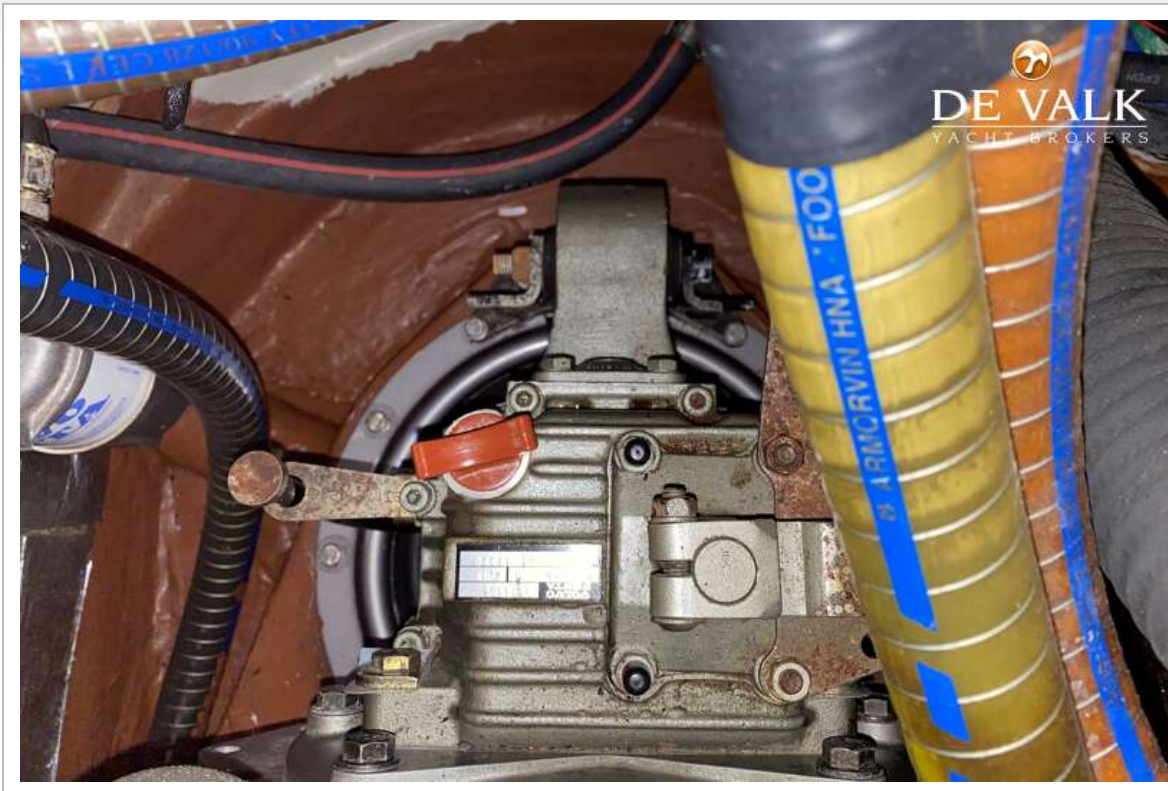
BAVARIA 46 CRUISER



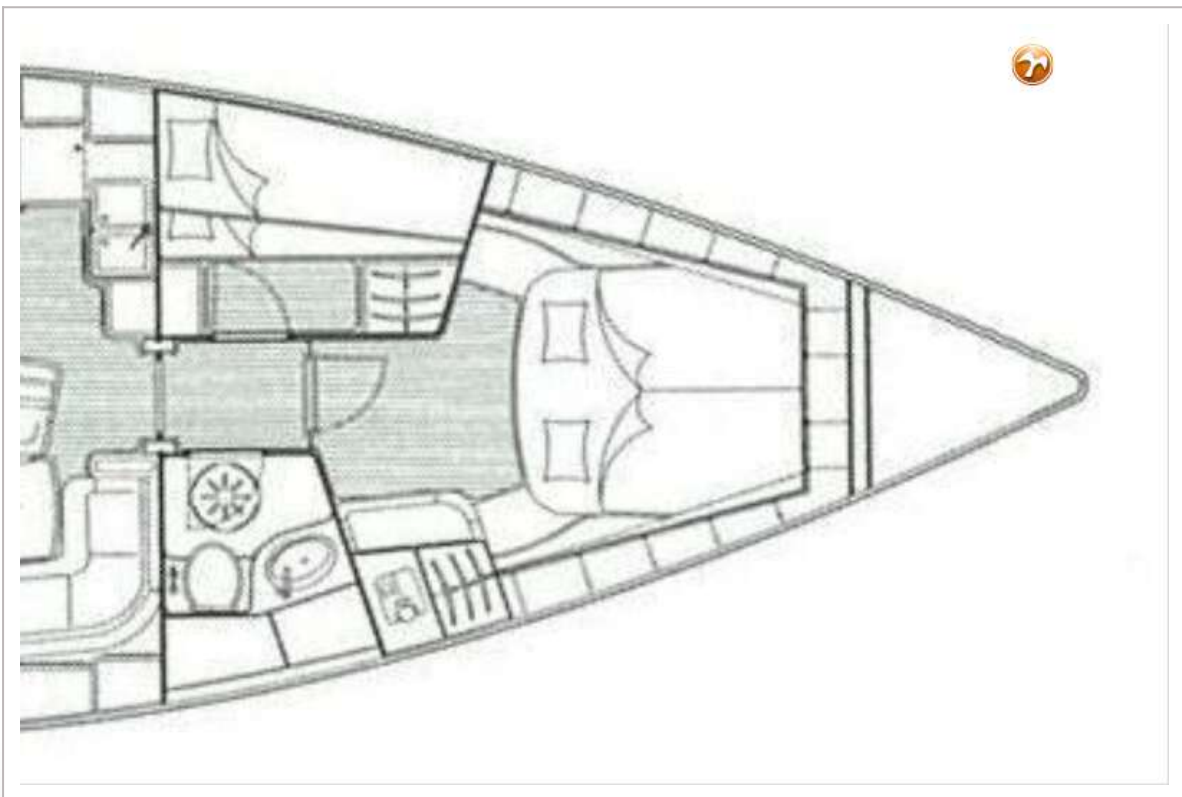
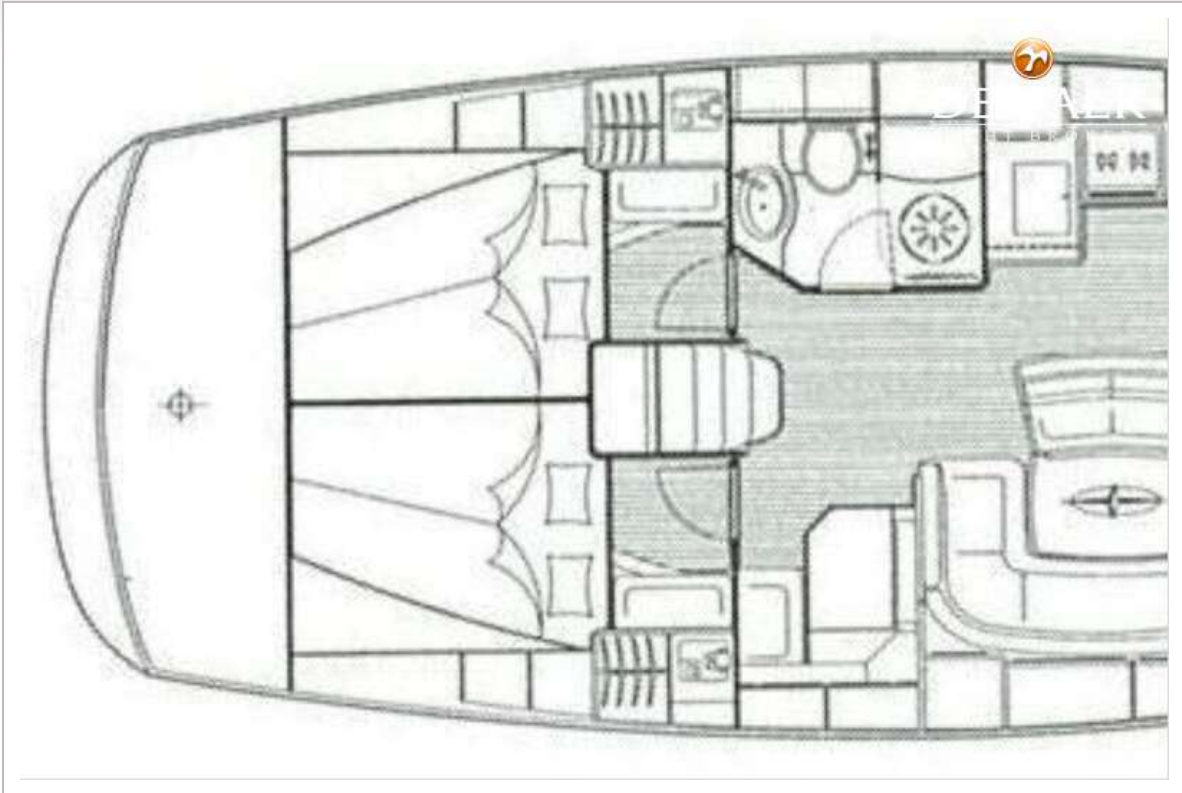
BAVARIA 46 CRUISER



BAVARIA 46 CRUISER



BAVARIA 46 CRUISER



BAVARIA 46 CRUISER

