



DE VALK
YACHT BROKERS



BAVARIA 40 OCEAN



DE VALK
YACHT BROKERS

BAVARIA 40 OCEAN

BROKER'S COMMENTS

This Bavaria 40 Ocean has only been used for private sailing by her first and only owner. With the Ocean centre cockpit series, Bavaria fulfilled the demands of their clients for an easy to handle, comfortable and well built cruising yacht. This Bavaria 40 Ocean comes well equipped with recent sails, bowthruster, electric winches and stoway sails. She is located at our sales office in Sint Annaland and can be visited 7 days a week.

Joris van de Rijt

SPECIFICATIONS

Dimensions	12.48 x 3.99 x 1.95 (m)	Builder	Bavaria Yachtbau
Built	2001	Cabins	2
Material	GRP	Berths	6
Engine(s)	1 x Volvo Penta MD 22L diesel	Hp/Kw	50.00 (hp), 36.80 (kw)
Asking price	sold (VAT)	Lying	at sales office

CONTACT

Sales office	De Valk Sint Annaland B.V.	Telephone	+31 (0)166 601 000
Address	Koelhuisweg 4 4697 RM Sint Annaland NL	E-mail	sintannaland@devalk.nl

DISCLAIMER

These particulars are given in good faith as supplied but cannot be guaranteed.



BAVARIA 40 OCEAN

GENERAL

Model	BAVARIA 40 OCEAN
Type	sailing yacht
LOA (m)	12,48
LWL (m)	10,95
Beam (m)	3,99
Draft (m)	1,95
Air draft (m)	17,00
Headroom (m)	2,00
Year built	2001
Builder	Bavaria Yachtbau
Country	Germany
Designer	J&J Design
Displacement (t)	8,3
Ballast (tonnes)	lead 2,9
CE norm	A
Hull material	GRP
Hull colour	white
Hull shape	round-bilged
Keel type	fin keel
Superstructure material	GRP
Rubbing strake	stainless steel
Deck material	GRP
Deck finish	synthetic teak (approx 2012)
Superstructure deck finish	non-skid moulded in
Cockpit deck finish	teak (needs attention/to be replaced)
Antifouling (year)	2023
Dorades	1 x
Window frame	aluminium
Window material	perspex
Deckhatch	2 x big. 2 x small



Fuel tank (litre)	polyethylene 230
Level indicator (fuel tank)	yes
Freshwater tank (litre)	polyethylene 1 x 150 1 x 230
Level indicator (freshwater)	yes
Wheel steering	cable steering Whitlock
Emergency tiller	yes

ACCOMMODATION

Cabins	2
Berths	6
Interior	mahogany
Floor	teak and holly
Aft deck	yes
Saloon	yes
Headroom saloon (m)	2,00
Heating	diesel ducted hot air Webasto
Chart table	yes
Aft Cabin	yes
Dinette	yes
Galley	yes
Countertop	plastic
Sink	stainless steel 2 x
Cooker	calor gas Bavaria 2 burner
Oven	yes
Fridge	Toploader
Hot water system	220V + engine
Water pressure system	electrical
Owners cabin	double bed
Bed length (m)	2,00
Wardrobe	hanging and shelves
Bathroom	en suite



Toilet	en suite
Toilet system	manual Jabsco
Wash basin	in the bathroom
Shower	en suite
Guest cabin 1	double bed
Bed length (m)	1,98
Wardrobe	hanging and shelves
Extra info	Gas hoses need to be replaced

MACHINERY

No of engines	1
Make	Volvo Penta
Type	MD 22L
HP	50
kW	36.80
Fuel	diesel
Year installed	2001
Engine cooling system	freshwater heat exchanger
Drive	sail-drive
Saildrive seal	(2001)
Engine controls	bowden cable
Gearbox	mechanical
Bowthruster	electric Side Power
Manual bilge pump	yes
Electric bilge pump	yes
Electrical installation	12V / 220V
Start battery	1 x 60Ah
Service battery	1 x 140 Ah
Bowthruster battery	1 x optima red top
Battery charger	Mastervolt
Shorepower	with cable



Extra info

Engine hour counter not working

NAVIGATION

Compass

Plastimo

Depth sounder

Raymarine ST60

Log

Raymarine ST60

Windset

Raymarine ST60 (wind speed not working)

VHF

Shipmate RS8300

Navigation lights

yes

EQUIPMENT

Fixed windscreen

With big opening window

Sprayhood with grab rail

yes

Cockpit table

yes

Bathing platform

yes

Boarding ladder

stainless steel

Deck shower

Hot + cold on swimming platform

Anchor

CQR Plough

Anchor chain

yes

Windlass

electrical

Capstan

On windlass

Sea railing

stainless steel

Grab rail (superstructure)

stainless steel

Railing side opening gates

2 x

Pushpit

yes

Pulpit

yes

Lifebuoy

yes

Radar reflector

yes

Fenders

yes

Mooring lines

yes

Radio-cd player

VDO



Speakers in salon	yes
Clock - barometer	yes
Fire extinguisher	yes

RIGGING

Rigging	fractional
Standing rigging	wire (2001)
Brand mast	Seldén
Material mast	aluminium
Spreaders	2 sets
Mainsail	InSails (2019)
Stoway mast	yes
Genoa	InSails (2021)
Genoa furler	Furlex
Reefing System	main in-mast furling
Backstay adjuster	mechanical Selden
Boomvang	tackle
Genoa sheetwinches	2 x Harken 44ST Electric (1 button not working)
Halyard winches	2 x Harken 40ST
Spi-pole	aluminium



BAVARIA 40 OCEAN



BAVARIA 40 OCEAN



BAVARIA 40 OCEAN



BAVARIA 40 OCEAN



BAVARIA 40 OCEAN



BAVARIA 40 OCEAN



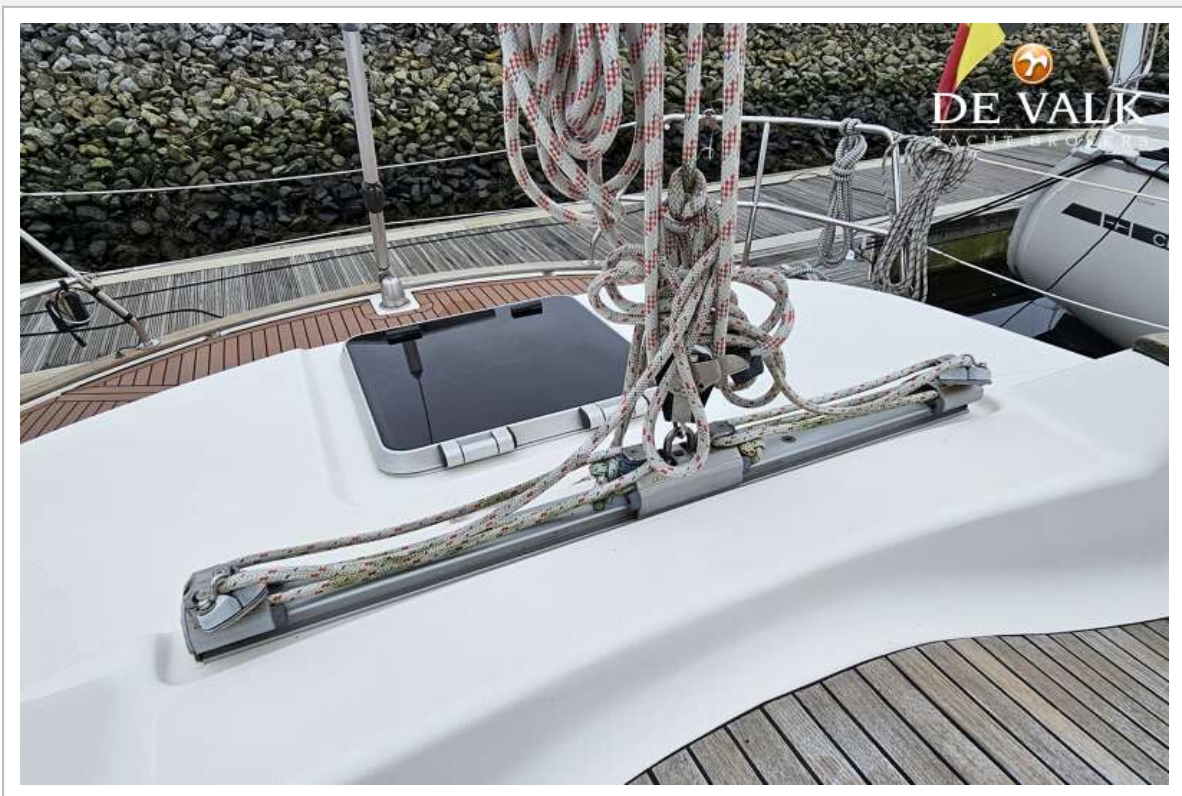
BAVARIA 40 OCEAN



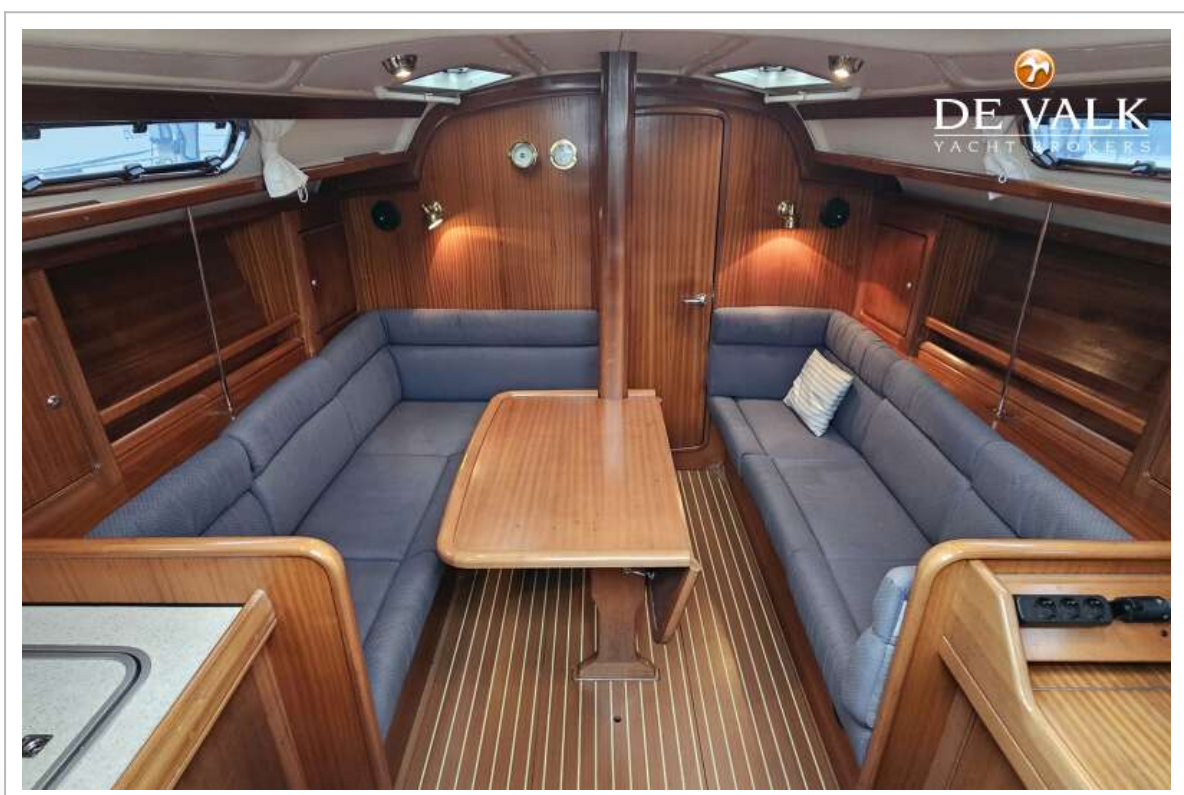
BAVARIA 40 OCEAN



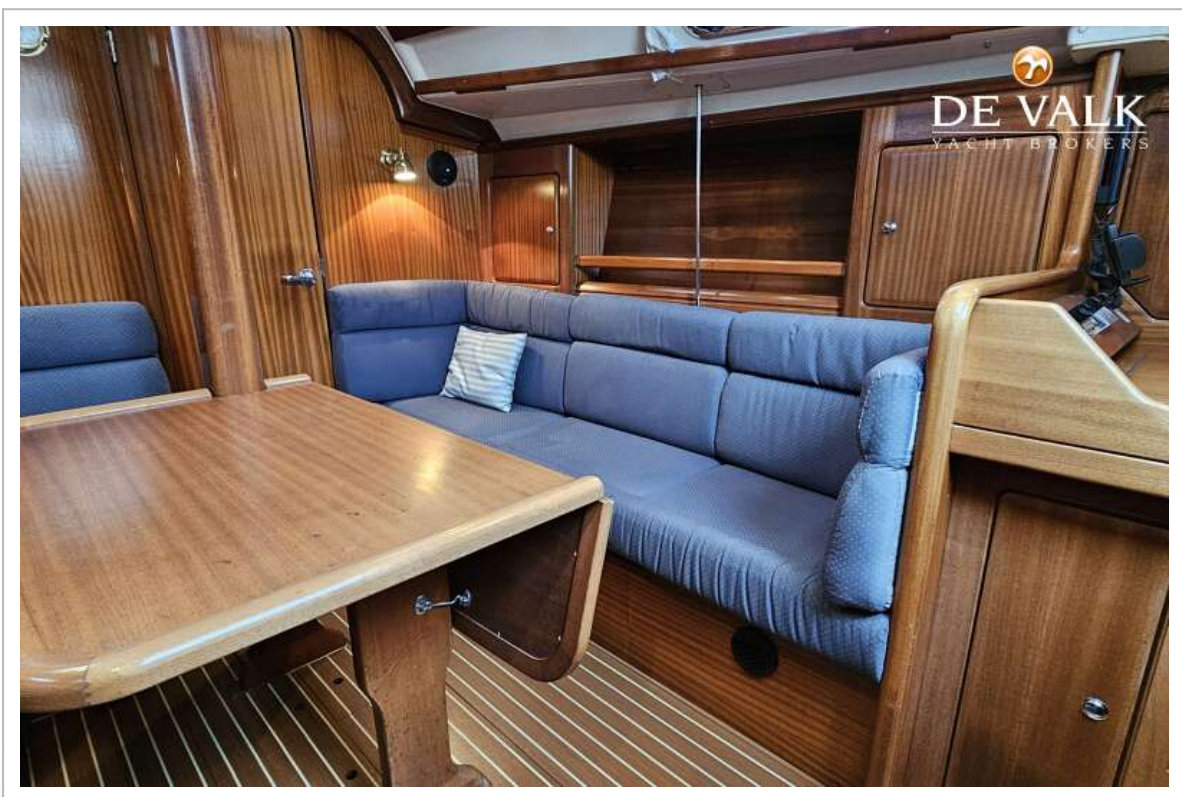
BAVARIA 40 OCEAN



BAVARIA 40 OCEAN



BAVARIA 40 OCEAN



BAVARIA 40 OCEAN



BAVARIA 40 OCEAN



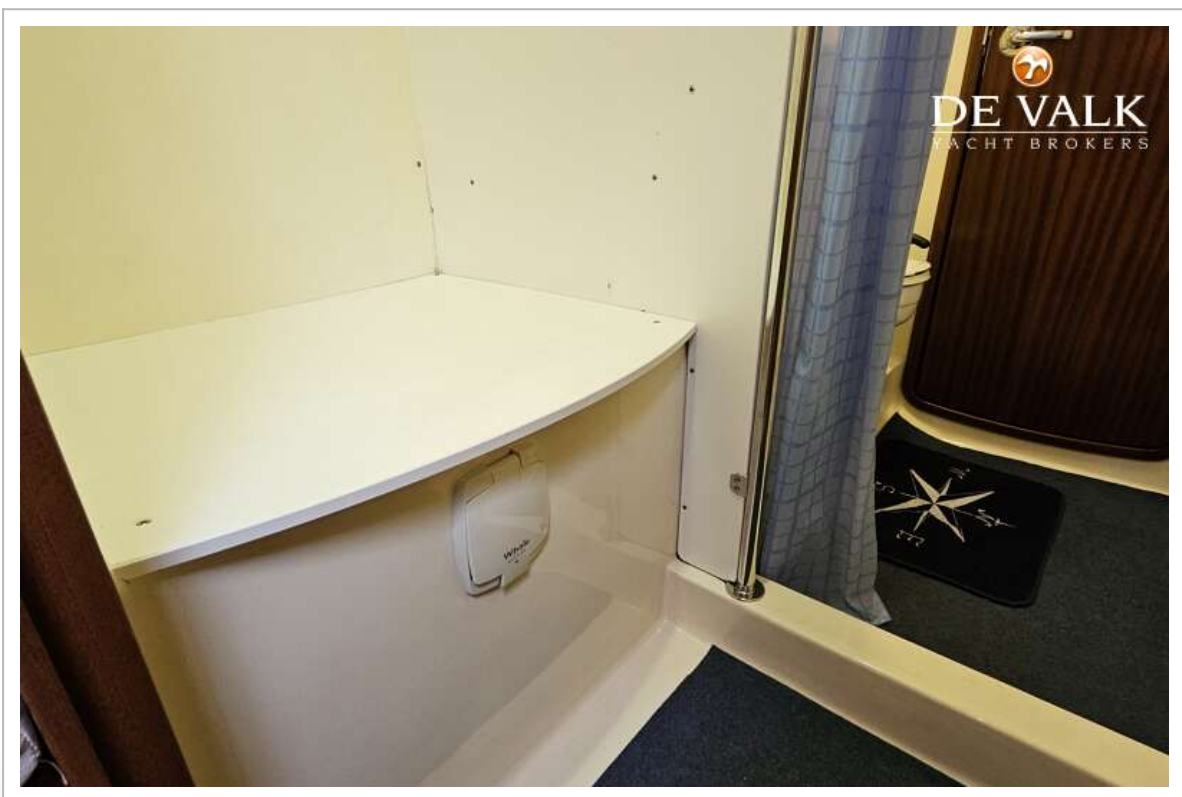
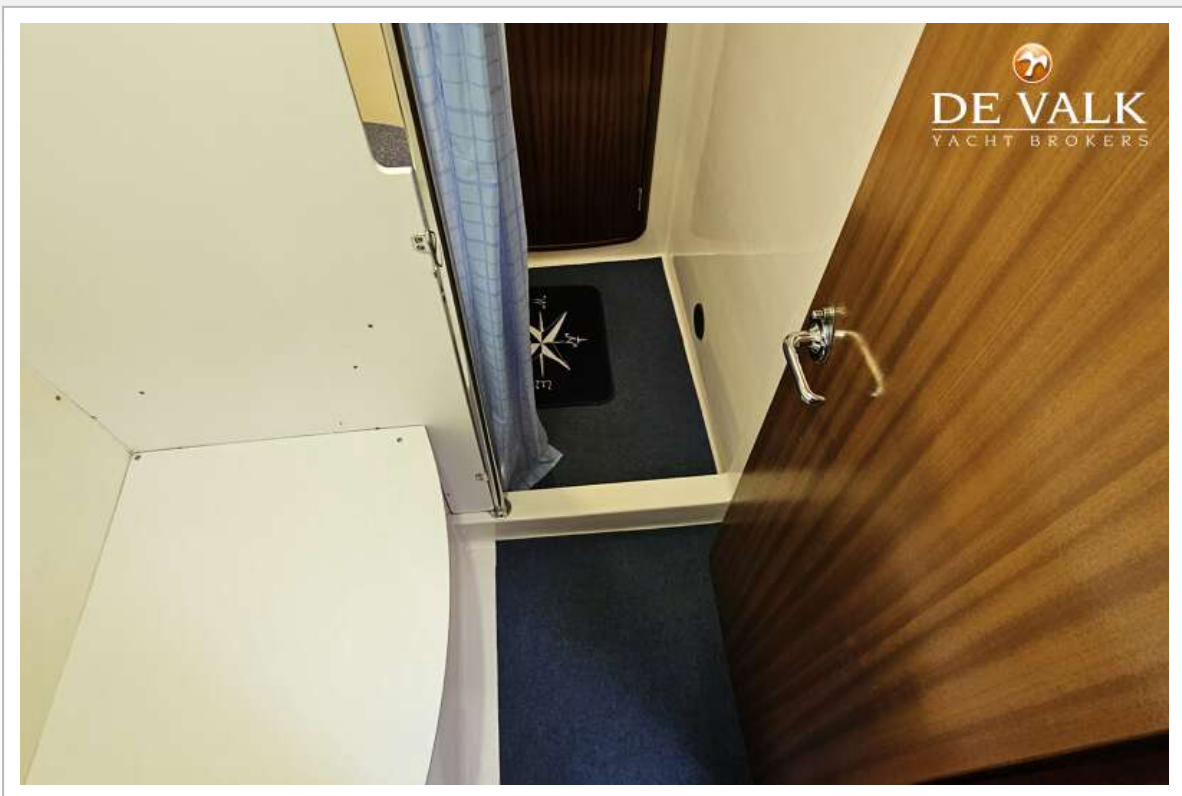
BAVARIA 40 OCEAN



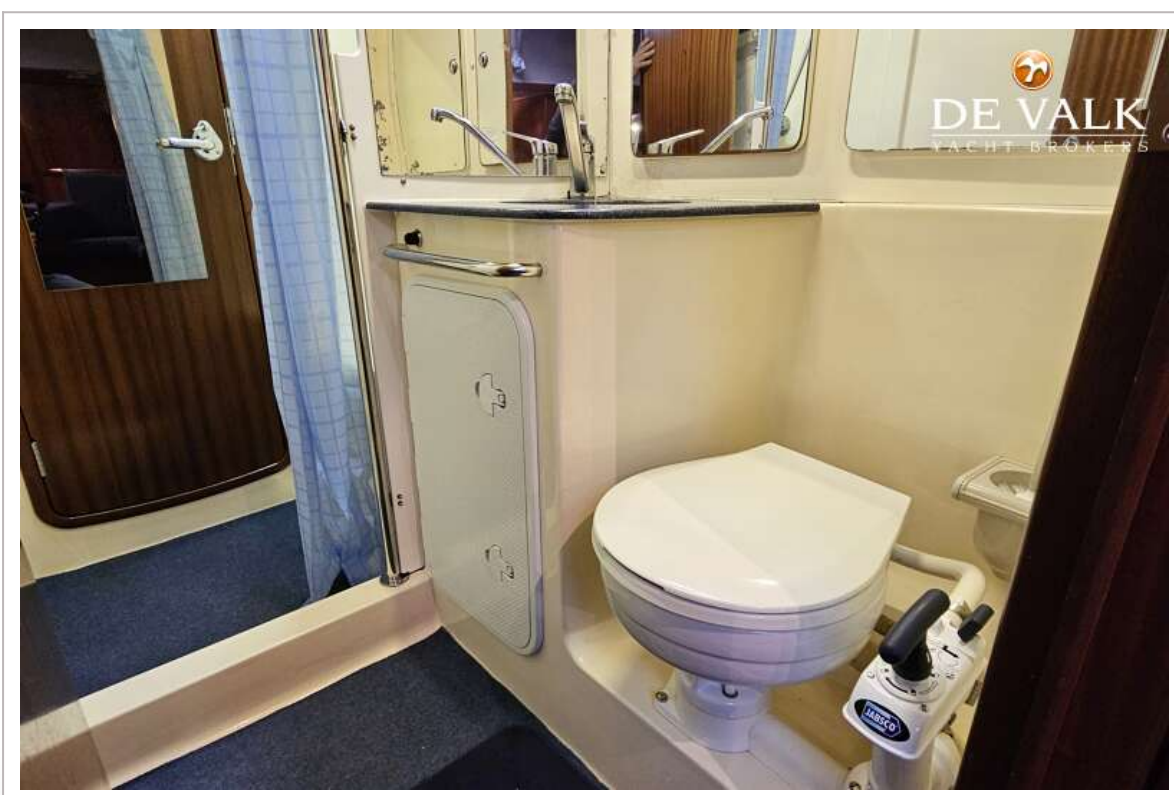
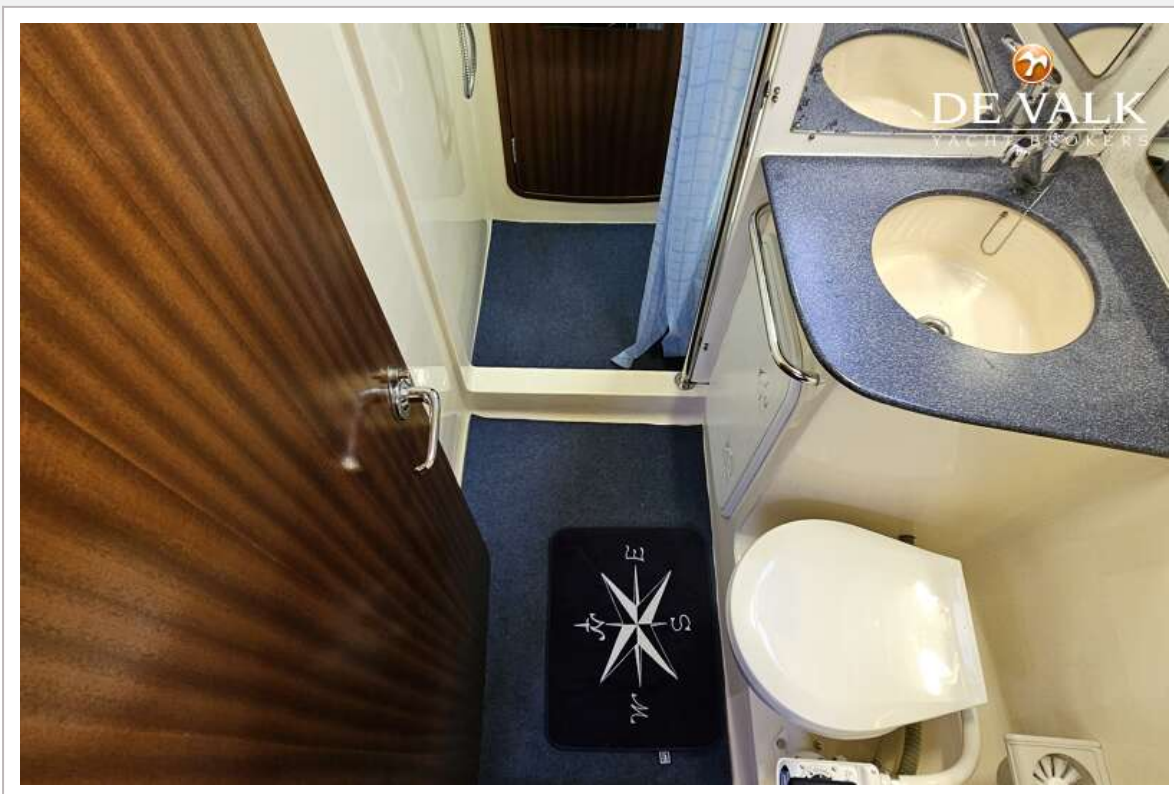
BAVARIA 40 OCEAN



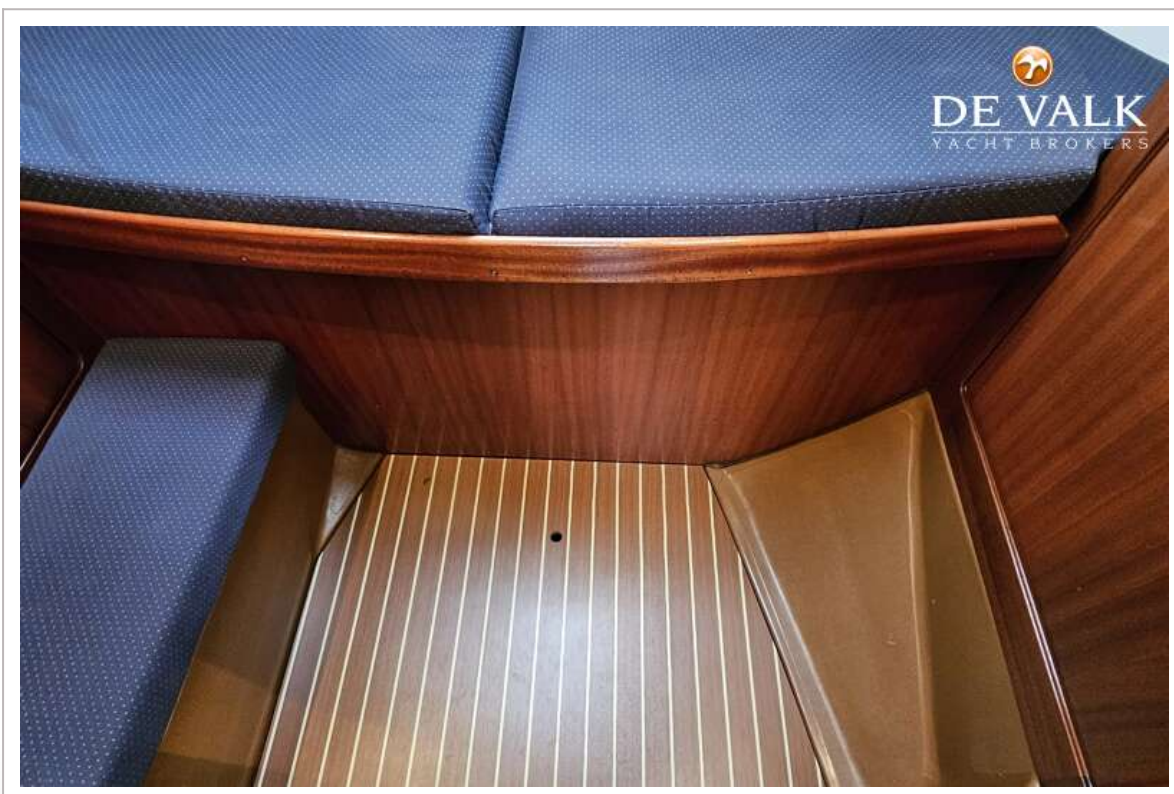
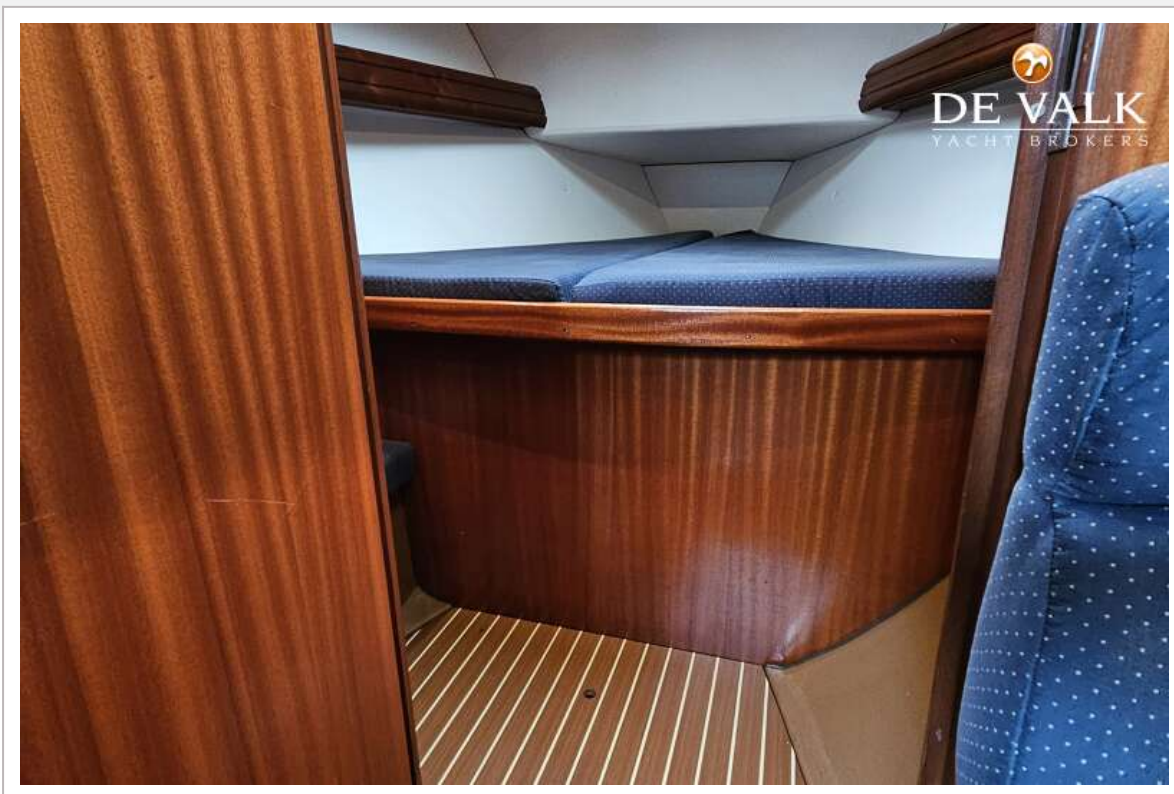
BAVARIA 40 OCEAN



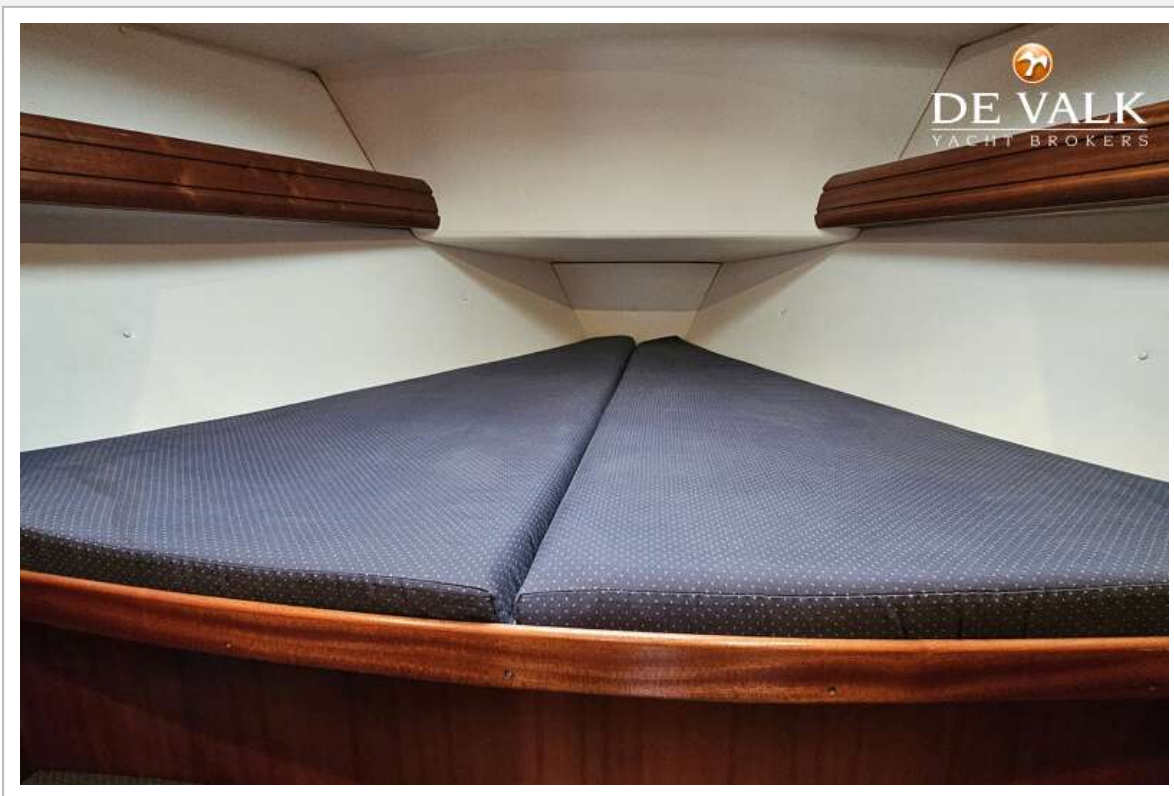
BAVARIA 40 OCEAN



BAVARIA 40 OCEAN



BAVARIA 40 OCEAN



BAVARIA 40 OCEAN



BAVARIA 40 OCEAN

