



DE VALK
YACHT BROKERS



BAVARIA 38 CRUISER



DE VALK
YACHT BROKERS

BAVARIA 38 CRUISER

BROKER'S COMMENTS

This Bavaria 38 Cruiser is offered by her first and only owner, who has cared for her very well. She features a spacious interior with two cabins, central heating, a built-in vacuum system, a spacious galley and bathroom. The teak deck was renovated in 2023. Easy to handle with electric genoa winches and a furling mainsail. Available for viewing by appointment in Zeeland - contact our Sint Annaland office today.

Joris van de Rijt

SPECIFICATIONS

Dimensions	11.72 x 3.90 x 1.65 (m)	Builder	Bavaria Yachtbau GmbH
Built	2009	Cabins	2
Material	GRP	Berths	6
Engine(s)	1 x Volvo Penta D1-30F diesel	Hp/Kw	29.00 (hp), 21.32 (kw)
Asking price	sold (VAT)	Lying	elsewhere / Not at sales office

CONTACT

Sales office	De Valk Sint Annaland B.V.	Telephone	+31 (0)166 601 000
Address	Koelhuisweg 4 4697 RM Sint Annaland NL	E-mail	sintannaland@devalk.nl

DISCLAIMER

These particulars are given in good faith as supplied but cannot be guaranteed.



BAVARIA 38 CRUISER

GENERAL

Model	BAVARIA 38 CRUISER
Type	sailing yacht
LOA (m)	11,72
LWL (m)	9,90
Beam (m)	3,90
Draft (m)	1,65
Air draft (m)	16,25
Headroom (m)	1,89
Year built	2009
Builder	Bavaria Yachtbau GmbH
Country	Germany
Designer	J&J Design
Displacement (t)	7,2
Ballast (tonnes)	cast iron 2,1
CE norm	A
Hull material	GRP
Hull colour	white With a blue striping and waterline
Hull shape	round-bilged
Keel type	tandem keel With a weighted torpedo underneath
Superstructure material	GRP
Rubbing strake	aluminum
Deck material	GRP
Deck finish	teak In 2009 applied in NL - Completely refurbished in 2023
Superstructure deck finish	non-skid moulded in & teak - in 2009 applied in NL - Completely refurbished in 2023
Cockpit deck finish	teak (Standard from the yard) - Completely refurbished in 2023
Antifouling (year)	2024
Dorades	2 x Plastic with a stainless steel protection bracket
Window frame	aluminium Lewmar
Window material	polycarbonate Lewmar
Deckhatch	Lewmar, all with rollo's



BAVARIA 38 CRUISER

Portholes	aluminium Lewmar
Insulation	foam
Fuel tank (litre)	polyethylene 150
Level indicator (fuel tank)	yes
Freshwater tank (litre)	polyethylene 210
Level indicator (freshwater)	yes
Blackwater tank (litre)	polyethylene 80
Level indicator (blackwater)	yes
Blackwater tank extraction	deck extraction + uw line With a plastic TruDesign sea cock (2020)
Wheel steering	Blue leather covered stainless steel folding steering wheel
Outside helm position	cable steering Lewmar pedestal. Original stainless steel steering wheel present
Emergency tiller	Stainless steel
Extra info	Jefa rudder needle bearing installed in 2013
Extra info	6 aluminium cleats. 2 additional fairleads near midship cleat
Extra info	2 x Cockpit locker (Very large on SB & normal on PS)

ACCOMMODATION

Cabins	2
Berths	6
Interior	teak
Floor	woodprint (Teak & Holly look-a-like)
Saloon	Longitudinal sofa on port side and L-shaped sofa on starboard
Headroom saloon (m)	1,88 - 2,00
Heating	central heating Webasto and filled with glycol
Chart table	On Starboard side - Headroom : 1,88 m
Aft Cabin	1 x on Port Side
Dinette	yes
Convertible berth	Port & Starboard side sofa : 2,00 x 0,75 m
Opening door to cockpit	2 x Door
Galley	On Port Side - Headroom : 1,88 m



BAVARIA 38 CRUISER

Countertop	plastic Black
Sink	stainless steel 2 x
Cooker	calor gas 2 x Burner
Oven	yes
Microwave/oven combi	Siemens Innowave
Fridge	Top loader with a compressor (New in 2020)
Hot water system	220V + engine
Water pressure system	electrical
Crockery	yes
Owners cabin	double bed In the front cabin - Headroom : 1,88 m
Bed length (m)	2,05 x 1,75
Wardrobe	hanging/drawers/shelves
Bathroom	shared Headroom : 1,75 - 1,85 m
Toilet	shared (Hoses renewed in 2022)
Toilet system	electric Johnson SPXFLOW (new in 2022)
Wash basin	in the bathroom
Shower	shared With an electric shower drain water pump
Extra info	Luxe mattresses with slatted base underneath
Guest cabin 1	double bed In aft cabin - Headroom : 1,83 - 1,87 m
Bed length (m)	2,05 x 1,70
Wardrobe	hanging and shelves
Extra info	Luxe mattresses with slatted base underneath
Central vacuum cleaner	Beflexx 100230
Extra info	Radiator installed in the front cabin, under the chart table, behind the cooking device and in the bathroom (which has some corrosion). Under the port side saloon sofa are 2 convectors installed. The Henco plastic heating pipes are installed under the saloon floor, creating a kind of floor heating. The Webasto heater unit is along the vessel's length installed, allowing it to be used while cruising.
Extra info	LED interior lights including several atmosphere lighting strips (with several colours). Light in bathroom needs to be replaced



BAVARIA 38 CRUISER

MACHINERY

No of engines	1
Make	Volvo Penta
Type	D1-30F
HP	29
kW	21.32
Fuel	diesel
Year installed	2009
Maximum speed (kn)	7,5
Cruising speed (kn)	6
Consumption (l/hr)	3
Engine cooling system	freshwater heat exchanger
Drive	sail-drive
Saildrive seal	Original membrane (2009)
Engine controls	bowden cable
Exhaust	watercooled
Propeller type	folding Volvo Penta (New in 2022)
Propeller blades	3
Manual bilge pump	1 x
Electric bilge pump	1 x
Electrical installation	12 & 220 Volt
Start battery	1x 95 AH Bosch (2020)
Service battery	4 x 95 AH Bosch AGM (2017)
Battery monitor	Victron BMV-6005 Battery Monitor & VE. Bus Multi Control
Battery charger/inverter	Victron MultiPlus Compact 12V/1600W/70A
Solar panel	2 x 50 Watt Enjoy Solar with a MT50 display & Cepever Tracer MPPT Solar charge controller
Diode battery combiners	Victron Galvanic Diode Isolator VD1.16
Shorepower	with cable Wirh connection on the bow and in cockpit
Insulation transformer	Victron
Extra info	Sure Power Multi Battery Isolator 1202



Extra info

Rubber flow deflector on the underwater hull was renewed in 2023

NAVIGATION

Compass

Plastimo Olympic 135 (on steering pedestal)

Depth sounder/log

Raymarine ST60+ Tridata

Windset

Raymarine ST60+

Repeater

Raymarine ST70 (at the chardtabel)

VHF

Radio Ocean RO4800 DSC with Mic & wireless P4800 in the cockpit

Autopilot

Raymarine ST6002 Smartpilot

Rudder angle indicator

Via the autopilot display

Radar

Raymarine Quantum dome (installed in 2023, not connected yet)

Radar/GPS/plotter

Raymarine HybridTouch

Electronis chart(s)

1 x

AIS transceiver

Raymarine AIS 500

Navigation lights

Anchor, steaming, deck and navigation

Extra info

12 & 220 V sockets in cabins, saloon, chart table & engine room

Extra info

220 Volt sockets in saloon, galley & in bathroom

EQUIPMENT

Sprayhood

Taupe - New in 2023

Cockpit cover

Old blue cockpit cover (to use in the winter)

Cockpit table

Fixed plastic table with folding sides

Bathing platform

Manual folding, covered with teak

Boarding ladder

stainless steel

Bow ladder

Removable (stainless steel)

Deck shower

With hot and cold pressured water

Anchor

Delta With a 50 m lead-weighted anchor line

Sea railing

stainless steel Renewed in 2023

Grab rail (superstructure)

stainless steel



BAVARIA 38 CRUISER

Railing side opening gates	New installed on both sides in 2023
Pushpit	Stainless steel
Pulpit	Stainless steel
Life raft (pers)	valise (or bag) 6
Last life raft survey	2021
Lifebuoy	Rescue Sling
Safety lines on deck	yes
Binocular	1 x 7x50
Radar reflector	TriLens
Fenders	yes
Mooring lines	yes
Spare parts	yes
Tools	yes
Radio-cd player	Pioneer
Cockpit speakers	2 x
Speakers in salon	2 x
Clock - barometer	Plastimo
Fire extinguisher	2 x
Latest extinguisher survey	Need to be checked/renewed
Extra info	Emergency ladder, mounted low on the transom for quick access
Extra info	Taupe windbreak fitted on the railing around the cockpit in 2022
Extra info	Removable fenderstep can be hung at the side gates

RIGGING

Rigging	fractional 19/20
Standing rigging	wire Professional checked in 2023
Brand mast	Seldén
Material mast	aluminium
Spreaders	2 x Set of spreaders
Mainsail	2009 : Elvstrom : HT Laminate
Fully battened mainsail	(vertical)



BAVARIA 38 CRUISER

Stoway mast	Selden Furlin - manual
High aspect	Elvstrom - with a taupe UV strip - New in 2019
Genoa furler	Furlex 200
Gennaker	Gennaker with a snuffer
Reefing System	main in-boom furling Manual
Backstay adjuster	tackle The backstay triangle has been widened
Boomvang	gasspring Selden Rodkicker
Primary sheet winch	2 x Lewmar 30ST (Main sheet)
Genoa sheetwinches	2 x Lewmar 40ST (electric)
Halyard winches	2 x Lewmar 30ST
Spi-pole	aluminium Selden
Gennaker pole	aluminium Selden - removable
Extra info	German Main sheet system
Extra info	Running rigging renewed during the last 3 years



BAVARIA 38 CRUISER



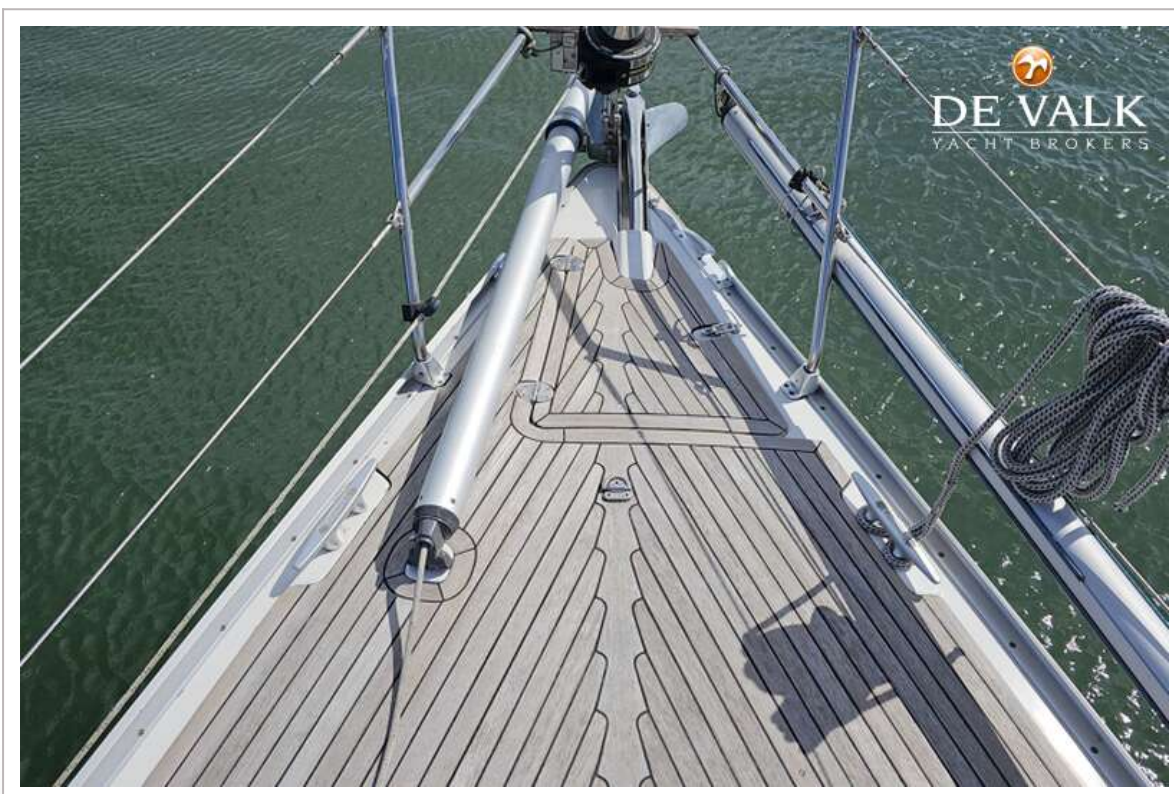
BAVARIA 38 CRUISER



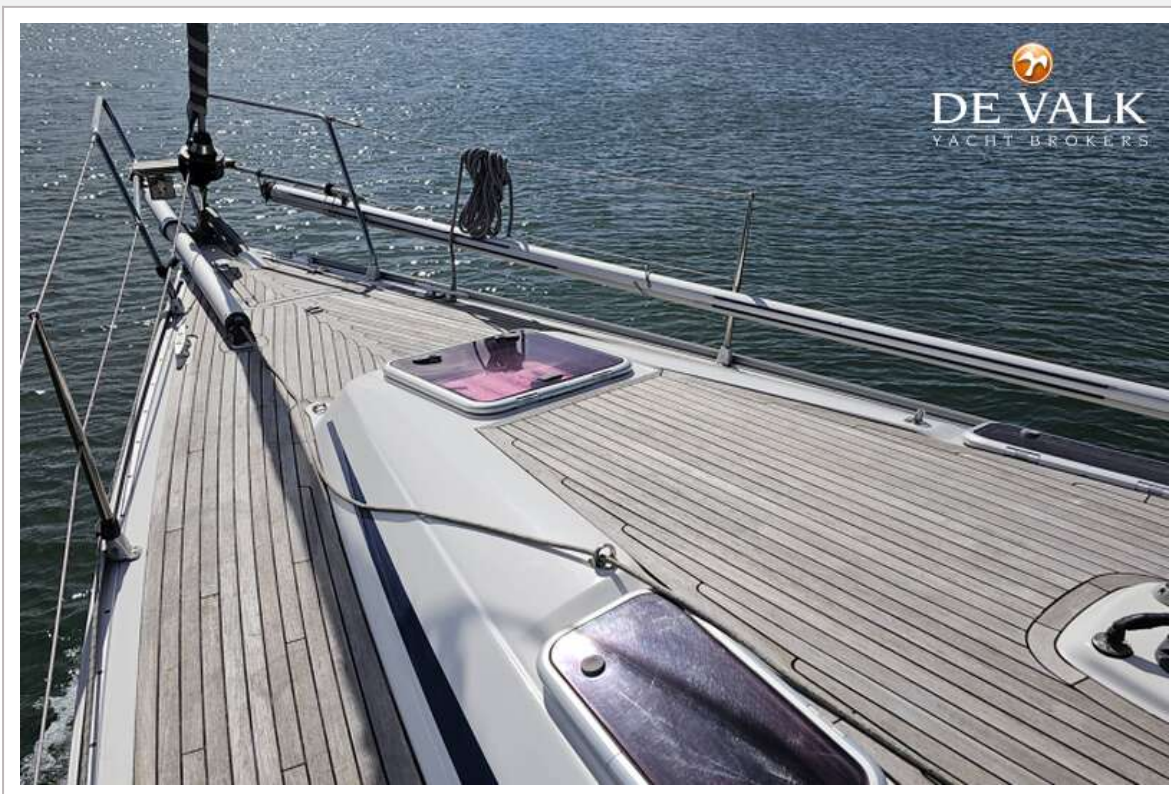
BAVARIA 38 CRUISER



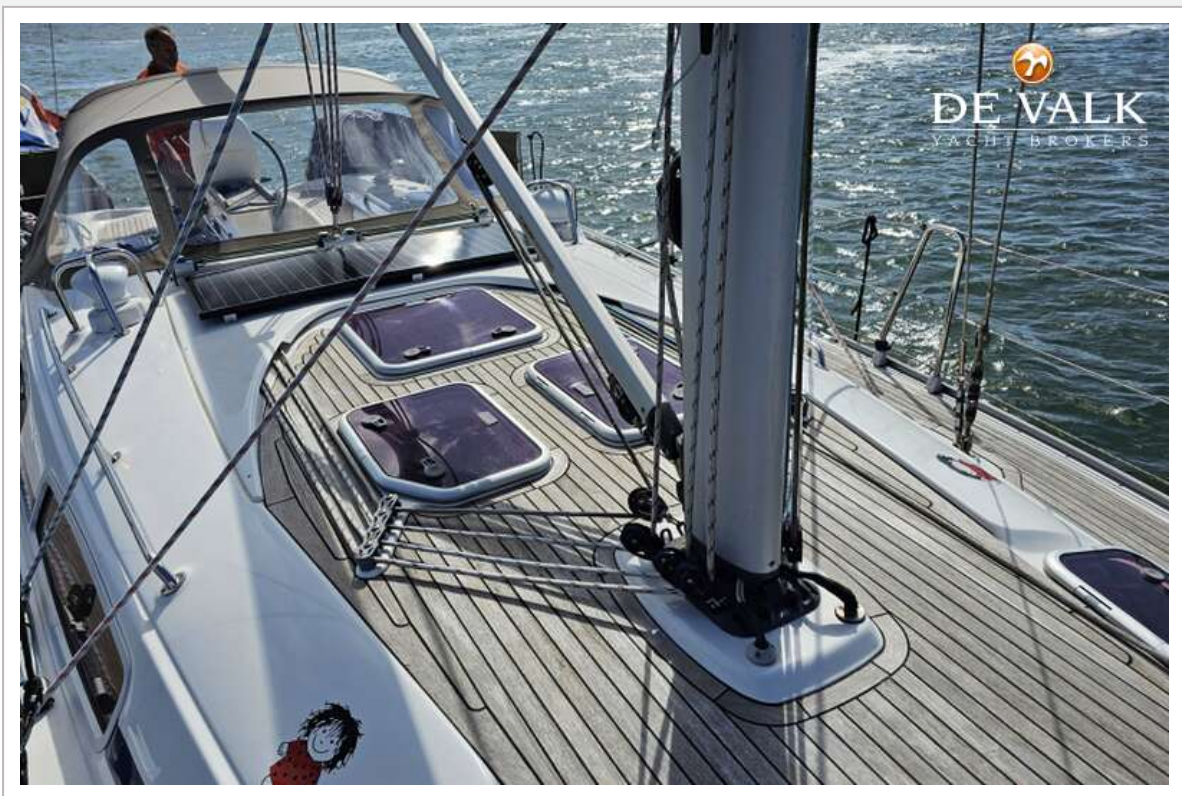
BAVARIA 38 CRUISER



BAVARIA 38 CRUISER



BAVARIA 38 CRUISER



BAVARIA 38 CRUISER



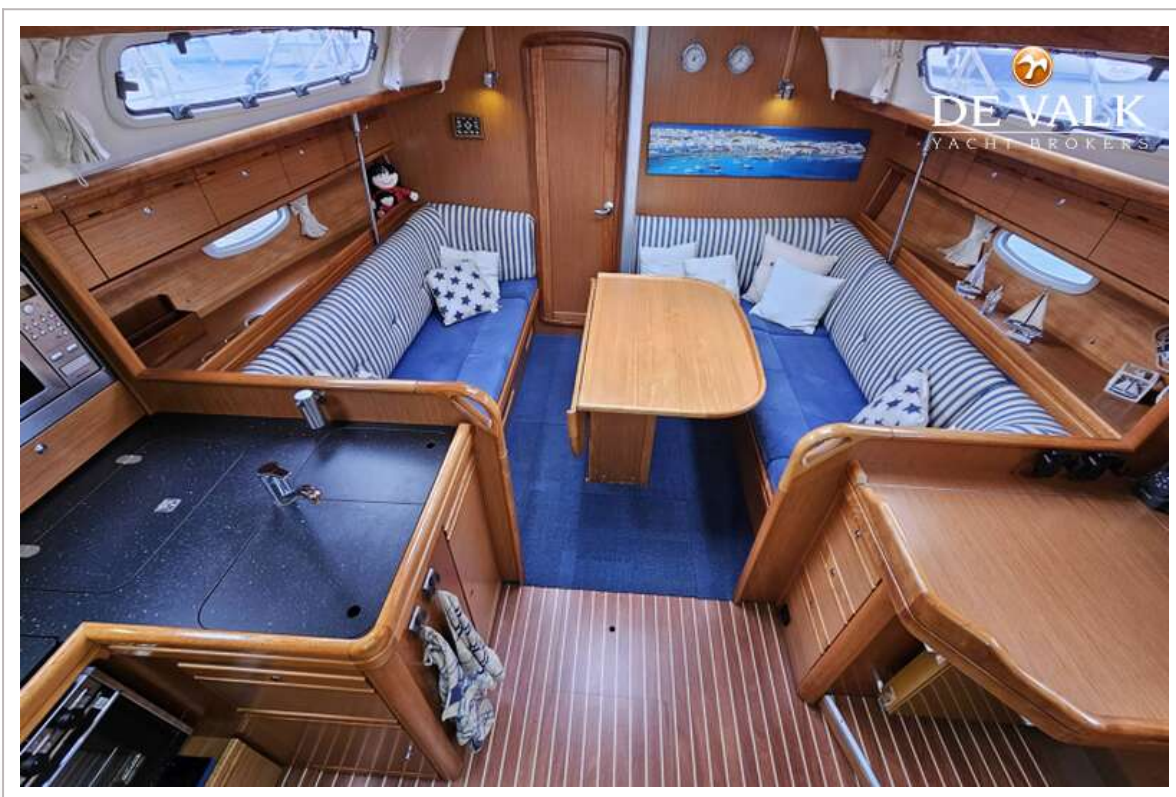
BAVARIA 38 CRUISER



BAVARIA 38 CRUISER



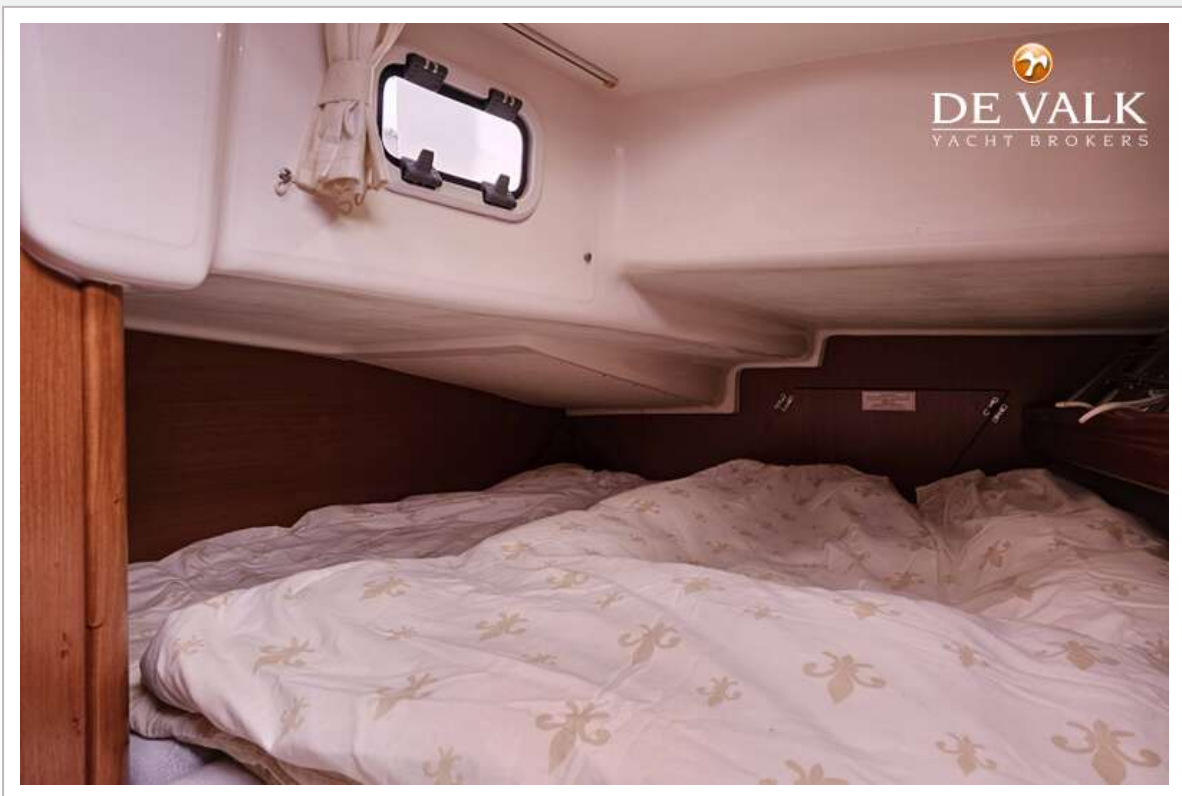
BAVARIA 38 CRUISER



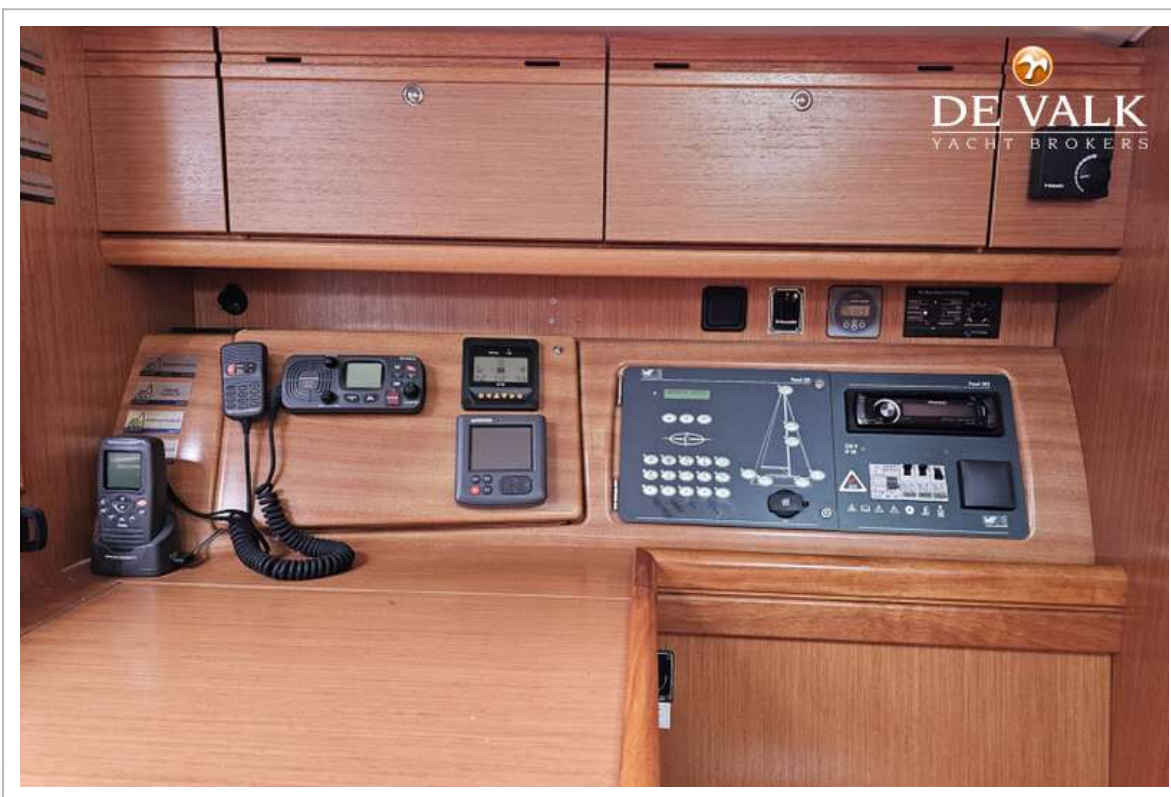
BAVARIA 38 CRUISER



BAVARIA 38 CRUISER



BAVARIA 38 CRUISER



BAVARIA 38 CRUISER



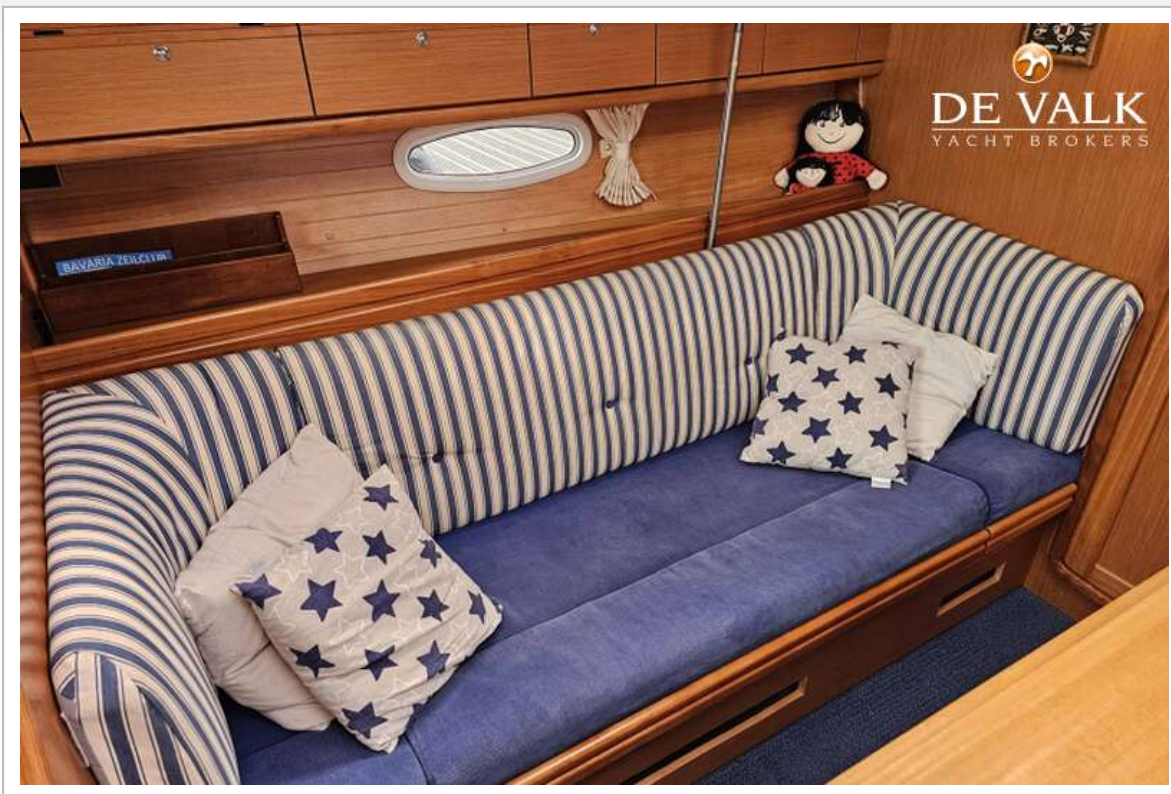
BAVARIA 38 CRUISER



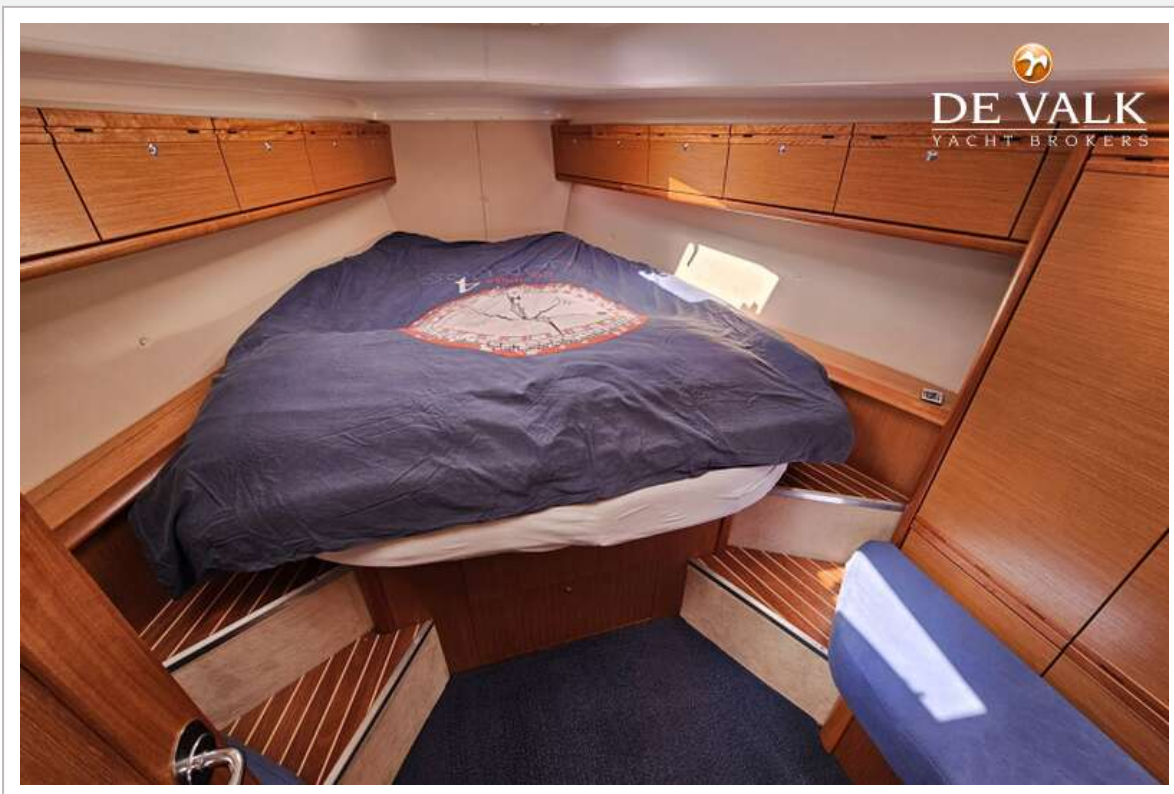
BAVARIA 38 CRUISER



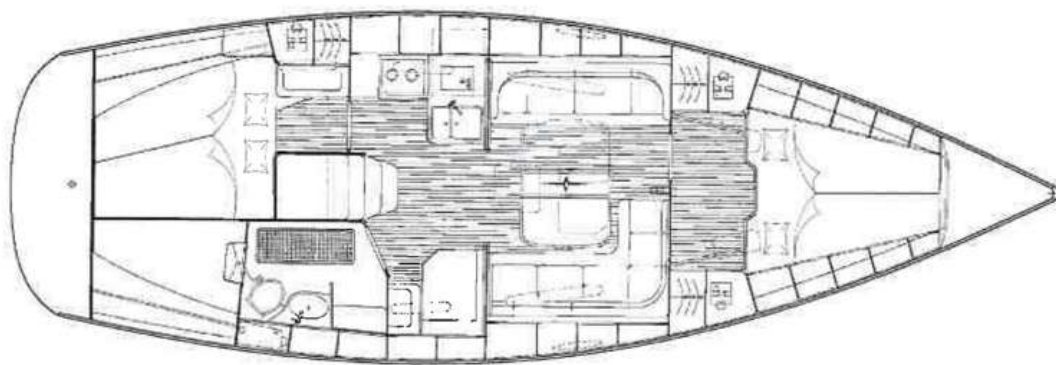
BAVARIA 38 CRUISER



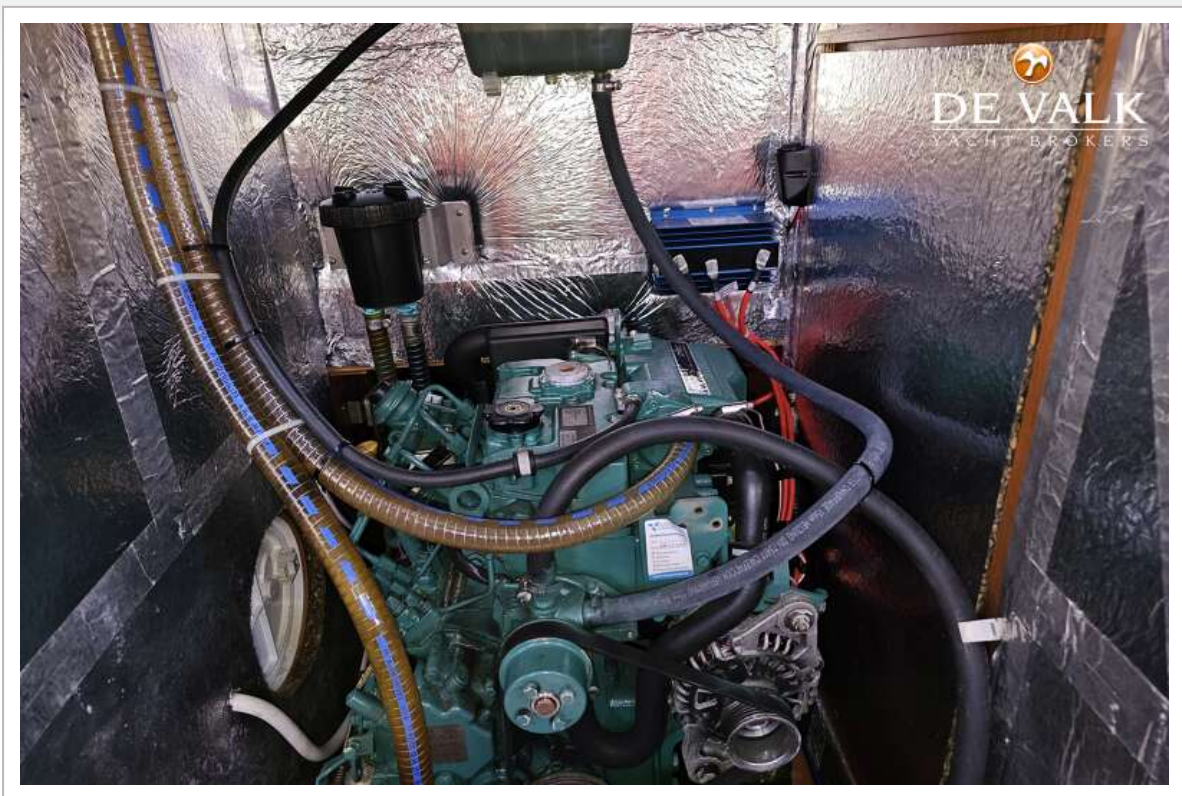
BAVARIA 38 CRUISER



BAVARIA 38 CRUISER



BAVARIA 38 CRUISER



BAVARIA 38 CRUISER



BAVARIA 38 CRUISER

