



## ALIBI 44 LONG RANGE TRAWLER



# ALIBI 44 LONG RANGE TRAWLER

## BROKER'S COMMENTS

The Alibi 44 is a long range modern cruiser designed by French naval architect Pierre Delion and built using high tech components such as Kevlar fiber and Nidabeille sandwich material. It has a low draft, low air draft and low fuel consumption. You can cruise the French canals as well as the Atlantic and Mediterrenean waters. It even has transatlantic range! The owner is an experienced offshore sailor and has used the Alibi 44 extensively and problem free since it was built. Well worth a look if you are looking for a one of a kind cruiser!

*Nick Lanting*

## SPECIFICATIONS

|                     |                                |                |                            |
|---------------------|--------------------------------|----------------|----------------------------|
| <b>Dimensions</b>   | 13.78 x 3.75 x 0.80 (m)        | <b>Builder</b> | Self Built                 |
| <b>Built</b>        | 2007                           | <b>Cabins</b>  | 2                          |
| <b>Material</b>     | Composite                      | <b>Berths</b>  | 5                          |
| <b>Engine(s)</b>    | 2 x Solé Mini 62 / SP60 diesel | <b>Hp/Kw</b>   | 2 x 60.00 (hp), 44.10 (kw) |
| <b>Asking price</b> | sold (VAT )                    | <b>Lying</b>   | at sales office            |

## CONTACT

|                     |  |                  |                        |
|---------------------|--|------------------|------------------------|
| <b>Sales office</b> | De Valk Sint Annaland B.V.                   | <b>Telephone</b> | +31 (0)166 601 000     |
| <b>Address</b>      | Koelhuisweg 4<br>4697 RM Sint Annaland<br>NL | <b>E-mail</b>    | sintannaland@devalk.nl |

## DISCLAIMER

These particulars are given in good faith as supplied but cannot be guaranteed.



# ALIBI 44 LONG RANGE TRAWLER

## GENERAL

|                            |   |
|----------------------------|---|
| Model                      | ALIBI 44 LONG RANGE TRAWLER                     |
| Type                       | motor yacht                                     |
| LOA (m)                    | 13,78   |
| LWL (m)                    | 13,20   |
| Beam (m)                   | 3,75  |
| Draft (m)                  | 0,80  |
| Air draft (m)              | 2,80  |
| Headroom (m)               | 1,99  |
| Year built                 | 2007  |
| Builder                    | Self Built                                      |
| Country                    | France  |
| Designer                   | Pierre Delion                                   |
| Displacement (t)           | 8   |
| CE norm                    | NA  |
| Hull material              | composite                                       |
| Hull colour                | brown   |
| Hull thickness (mm)        | 20mm below waterline, 15mm above waterline      |
| Hull shape                 | hard chine                                      |
| Superstructure material    | Polyester resin honeycom (Nidabeille ) sandwich |
| Superstructure (mm)        | 30  |
| Deck plate thickness (mm)  | 30  |
| Rubbing strake             | wood  |
| Deck material              | Polyester resin honeycom (Nidabeille ) sandwich |
| Deck finish                | non-skid paint                                  |
| Superstructure deck finish | non-skid paint                                  |
| Cockpit deck finish        | non-skid paint                                  |
| Antifouling (year)         | 2015  |
| Window frame               | aluminium                                       |
| Window material            | double glazing                                  |
| Deckhatch                  | 2 x   |



# ALIBI 44 LONG RANGE TRAWLER

|                              |   |
|------------------------------|---|
| Portholes                    | aluminium   |
| Insulation                   | foam Reinforced thermolayer   |
| Radar arch                   | collapsible   |
| Mast can be lowered          | manual  |
| Fuel tank (litre)            | aluminium 1500  |
| Fuel tank 2 (litre)          | aluminium 1500  |
| Level indicator (fuel tank)  | VDO   |
| Freshwater tank (litre)      | polyethylene 4 x 220  |
| Level indicator (freshwater) | yes   |
| Blackwater tank (litre)      | polyethylene 220  |
| Level indicator (blackwater) | yes   |
| Blackwater tank extraction   | deck extraction + uw line   |
| Greywater tank (litre)       | Grey water goes into blackwater tank  |
| Wheel steering               | hydraulic   |
| Inside helm position         | yes   |
| More info on hull            | yes   |
| More info on paintwork       | 2016 hull professionally painted, deck & superstructure by owner                |
| Extra info                   | Hull is reinforced with Kevlar  |
| Extra info                   | Designer: <a href="https://tinyurl.com/w5myt5w">https://tinyurl.com/w5myt5w</a> |

## ACCOMMODATION

|                         |                                  |
|-------------------------|----------------------------------|
| Cabins                  | 2                                |
| Berths                  | 5                                |
| Interior                | teak                             |
| Floor                   | carpet                           |
| Open cockpit            | yes                              |
| Aft deck                | yes                              |
| Pilot house/deck saloon | yes                              |
| Headroom saloon (m)     | 1,99                             |
| Heating                 | diesel ducted hot air Wallas 40D |
| Aft Cabin               | yes                              |



# ALIBI 44 LONG RANGE TRAWLER

|                         |                                     |
|-------------------------|-------------------------------------|
| Dinette                 | yes                                 |
| Sliding door to cockpit | To sidedecks                        |
| Galley                  | yes                                 |
| Countertop              | plastic                             |
| Sink                    | stainless steel                     |
| Cooker                  | calor gas 2-burner                  |
| Oven                    | Calor gas                           |
| Fridge                  | Whirlpool 178 l                     |
| Hot water system        | 220V + engine 40 liter boiler (s/s) |
| Water pressure system   | electrical Johnson Aquajet 19 l/min |
| Owners cabin            | French bed                          |
| Bed length (m)          | 1,90 x 1,40                         |
| Wardrobe                | hanging and shelves                 |
| Toilet                  | shared                              |
| Toilet system           | electric Vetus                      |
| Wash basin              | in the cabin                        |
| Shower                  | shared                              |
| Extra info              | Headroom 1,93m                      |
| Guest cabin 1           | double bed                          |
| Bed length (m)          | 1,90 x 1,40                         |
| Wardrobe                | shelves                             |
| Wash basin              | in the cabin                        |
| Extra info              | Headroom 1,80m                      |
| Washing machine         | Candy 3,5 kg in saloon              |
| Extra info              | 15cm latex mattresses + slats       |
| Extra info              | Back and side windows can be opened |

## MACHINERY

|               |                |
|---------------|----------------|
| No of engines | 2              |
| Make          | Solé           |
| Type          | Mini 62 / SP60 |



# ALIBI 44 LONG RANGE TRAWLER

|                          |   |
|--------------------------|---|
| HP                       | 60,00   |
| kW                       | 44,10   |
| Fuel                     | diesel  |
| Year installed           | 2007  |
| Maximum speed (kn)       | 10,5  |
| Cruising speed (kn)      | 7,5   |
| Consumption (l/hr)       | 7,5 @ 7,5 knots                               |
| Range (nm)               | 2400  |
| Engine hours             | 1300  |
| Engine cooling system    | freshwater heat exchanger                     |
| Drive                    | sail-drive                                    |
| Saildrive seal           | 2014, 300 runnings hours since new seal       |
| Engine controls          | bowden cable                                  |
| Gearbox                  | mechanical                                    |
| Exhaust                  | watercooled                                   |
| Propeller type           | fixed   |
| Electric bilge pump      | 2 x Johnson 7200 l/h automatic                |
| Electrical installation  | 12V / 220V                                    |
| Start battery            | 110 Ah (2018)                                 |
| Service battery          | 4 x 250 Ah AGM Deep Cycle (2018)              |
| Battery monitor          | Victron BMV-501                               |
| Battery charger/inverter | Victron Phoenix Multi Plus 2500 W             |
| Solar panel              | 6 x 110 W monocrystalline on roof             |
| Diode battery combiners  | yes   |
| Shorepower               | with cable                                    |
| Extra info               | Each engine has a 50A and 70A alternator      |
| Extra info               | Technodrive SP60 saildrives, replaced in 2014 |
| Extra info               | Oil change 2018                               |

## NAVIGATION

|         |          |
|---------|----------|
| Compass | Plastimo |
|---------|----------|



# ALIBI 44 LONG RANGE TRAWLER

|                        |                      |
|------------------------|----------------------|
| Electric compass       | In autopilot         |
| Depth sounder/log      | Simrad               |
| VHF                    | Navicom RT-450 DSC   |
| Autopilot              | Vetus AP2S hydraulic |
| Rudder angle indicator | In autopilot         |
| Radar/GPS/plotter      | Simrad CX 44         |
| Navtex                 | Clipper              |
| Electronis chart(s)    | C-Map                |
| Navigation lights      | yes                  |

## EQUIPMENT

|                  |                                       |
|------------------|---------------------------------------|
| Fixed windscreen | yes                                   |
| Window cover     | yes                                   |
| Bathing platform | yes                                   |
| Boarding ladder  | stainless steel                       |
| Deck shower      | Cold water                            |
| Anchor           | FOB Rock 20 kg                        |
| Anchor chain     | 60 m                                  |
| Anchor 2         | FOB Rock 16 kg                        |
| Anchor chain     | Anchor chain with rope                |
| Windlass         | electrical Lofrans Tiger 1200W        |
| Capstan          | On anchor winch                       |
| Deck wash        | Saltwater or freshwater via valve     |
| Dinghy           | rigid inflatable Bombard AX300 (2007) |
| Outboard         | Tohatsu 3.5 hp (2007)                 |
| Outboard support | yes                                   |
| Pulpit           | yes                                   |
| Lifejackets      | 8 x                                   |
| Lifebuoy         | yes                                   |
| Wiper            | 1 x                                   |
| Horn             | electric                              |



# ALIBI 44 LONG RANGE TRAWLER

|                                    |  |
|------------------------------------|--|
| <b>Radar reflector</b>             | yes  |
| <b>Fenders</b>                     | yes  |
| <b>Mooring lines</b>               | yes  |
| <b>Spare parts</b>                 | yes  |
| <b>Tools</b>                       | yes  |
| <b>Radio-cd player</b>             | Philips                                    |
| <b>Speakers in salon</b>           | 2 x Zenon                                  |
| <b>Fire extinguisher</b>           | 1 x 2 kg manual, 1 x 1 kg automatic powder |
| <b>Latest extinguisher survey</b>  | 2018                                       |
| <b>Extinguisher in engine room</b> | 2 x 1 kg automatic powder                  |





# ALIBI 44 LONG RANGE TRAWLER



# ALIBI 44 LONG RANGE TRAWLER

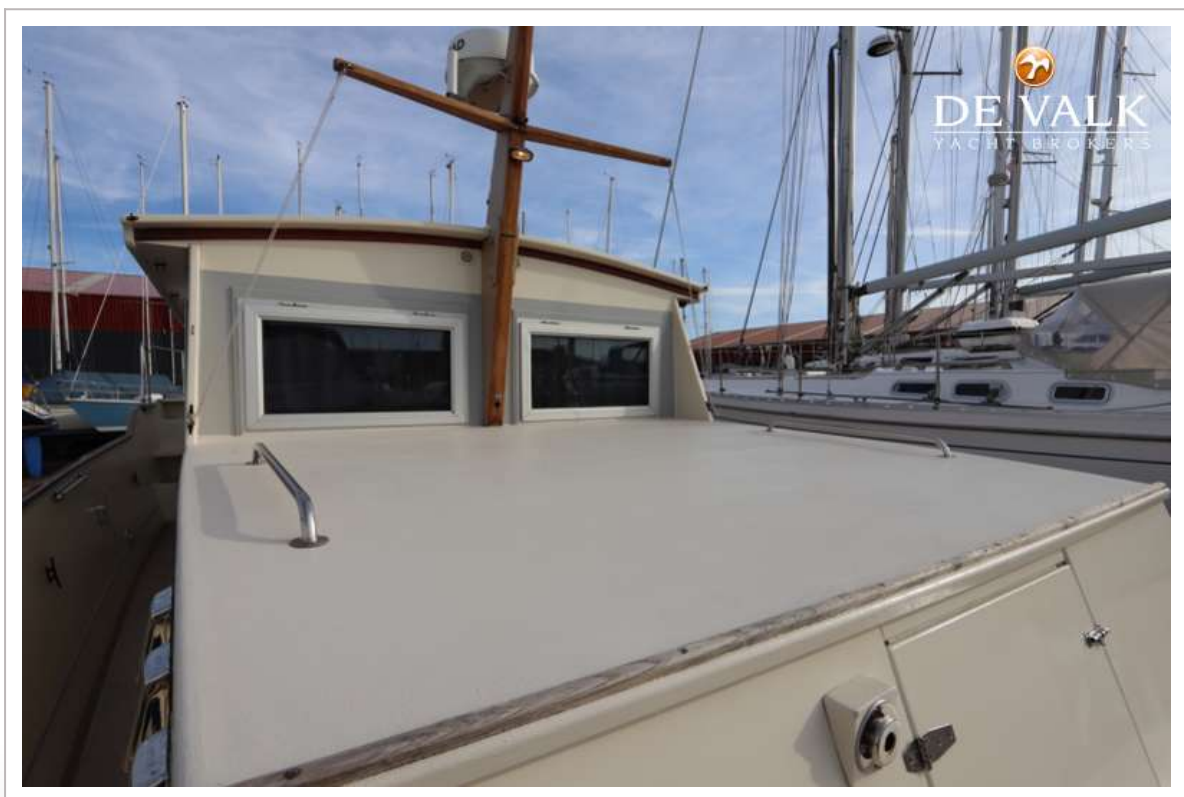


# ALIBI 44 LONG RANGE TRAWLER





# ALIBI 44 LONG RANGE TRAWLER



# ALIBI 44 LONG RANGE TRAWLER



# ALIBI 44 LONG RANGE TRAWLER





# ALIBI 44 LONG RANGE TRAWLER



# ALIBI 44 LONG RANGE TRAWLER

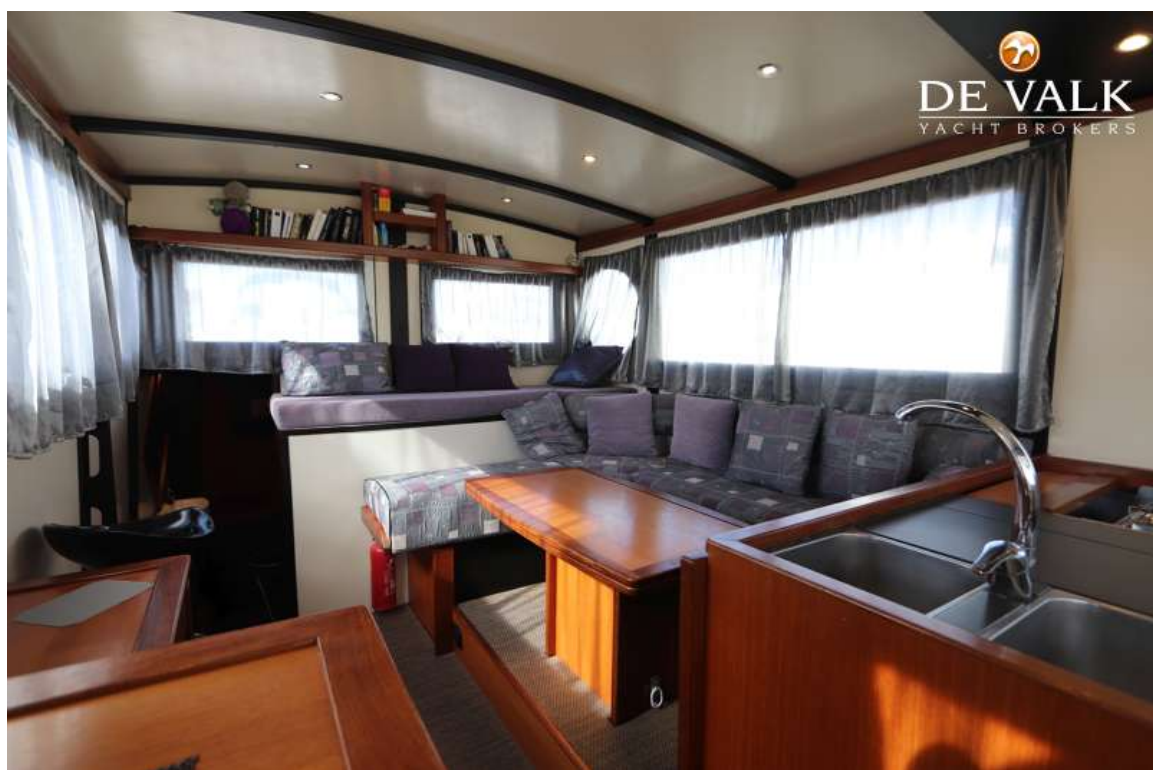




# ALIBI 44 LONG RANGE TRAWLER



# ALIBI 44 LONG RANGE TRAWLER



# ALIBI 44 LONG RANGE TRAWLER

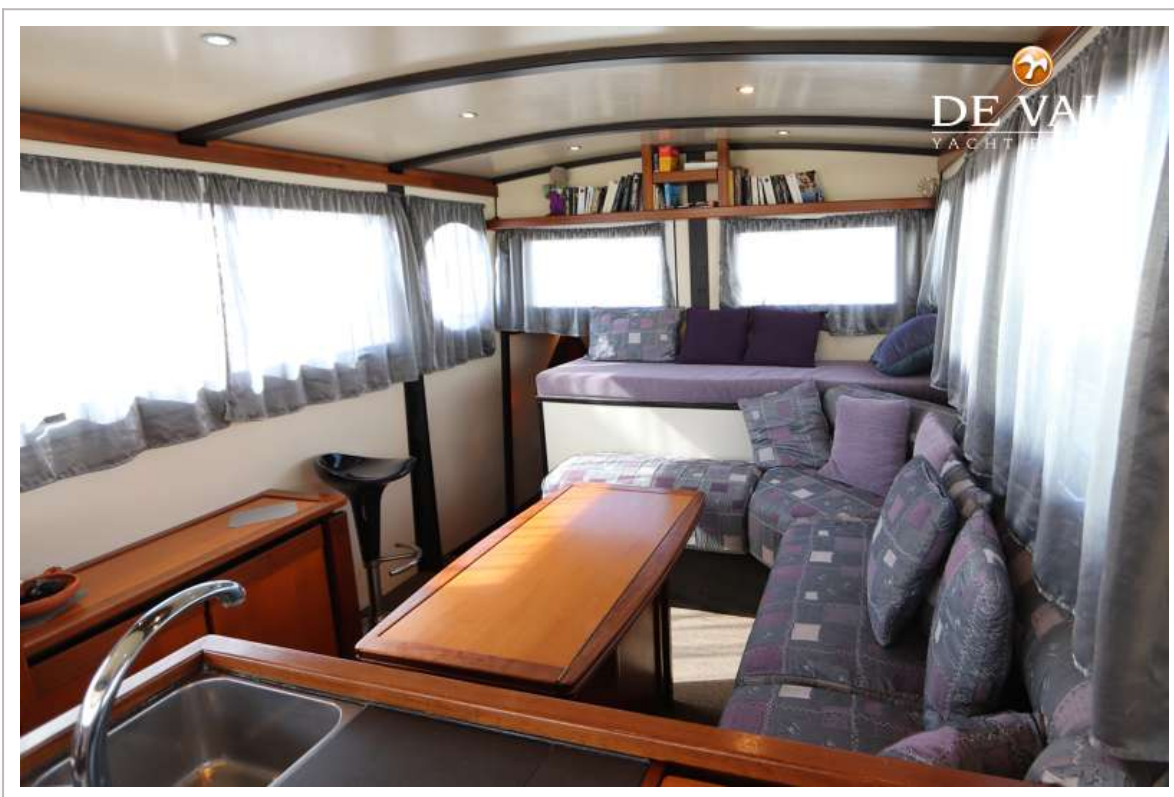




# ALIBI 44 LONG RANGE TRAWLER

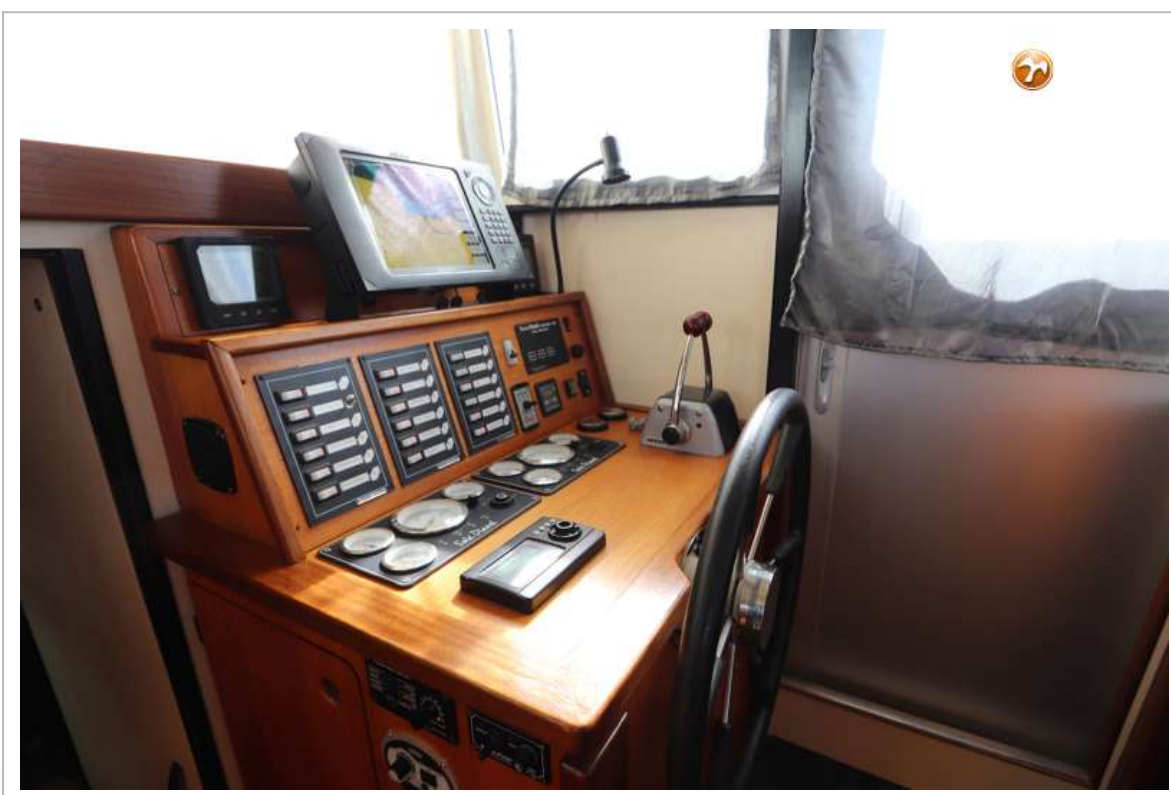


# ALIBI 44 LONG RANGE TRAWLER

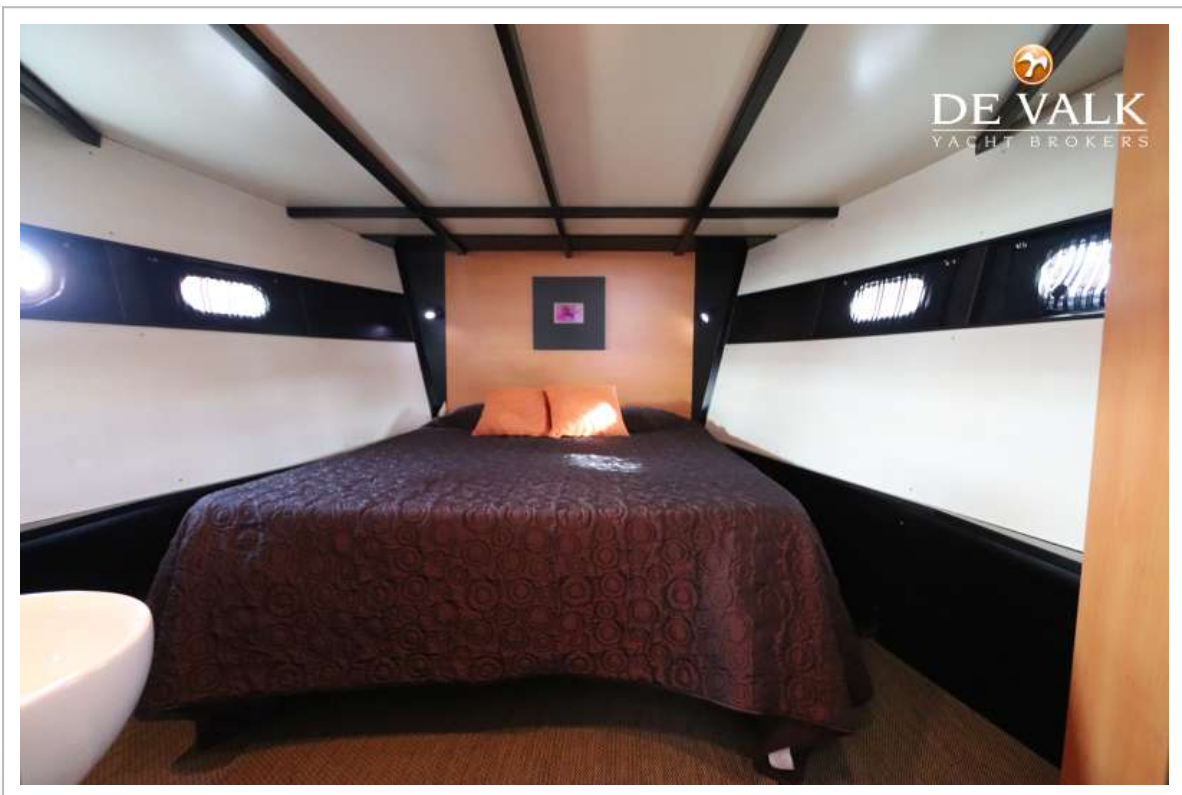
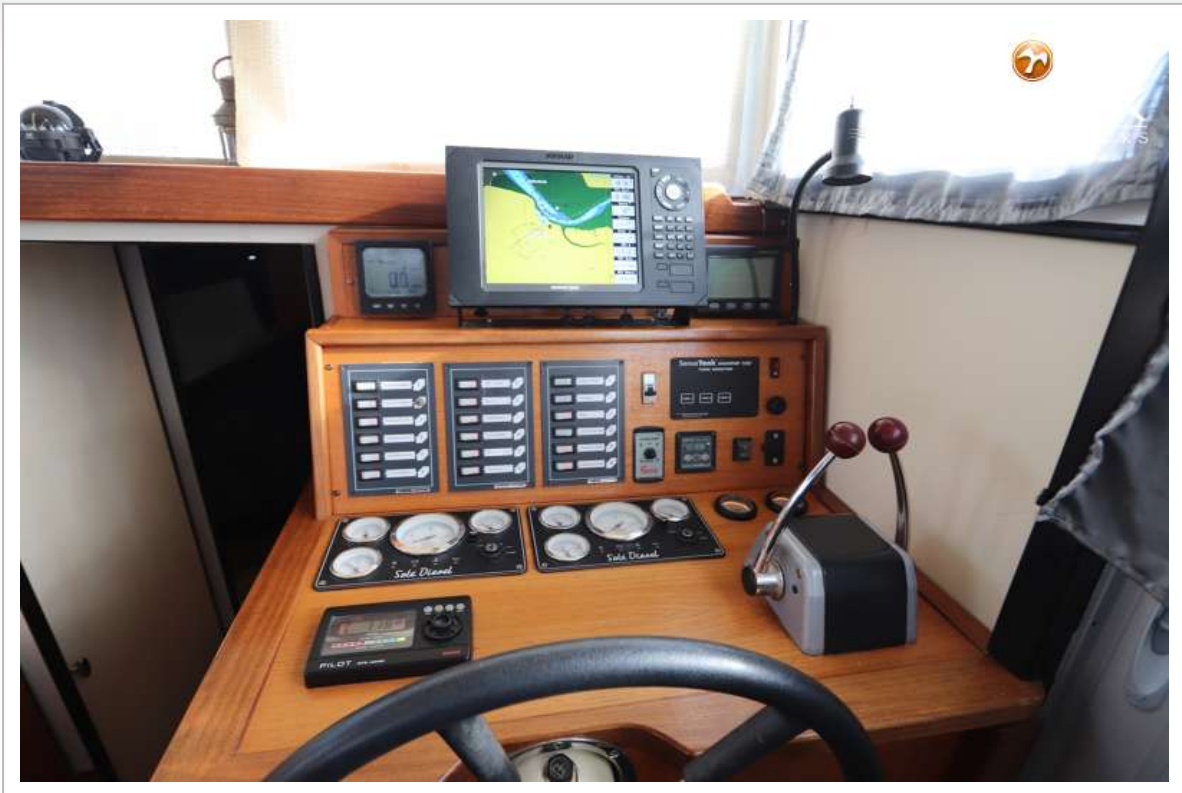




# ALIBI 44 LONG RANGE TRAWLER



# ALIBI 44 LONG RANGE TRAWLER

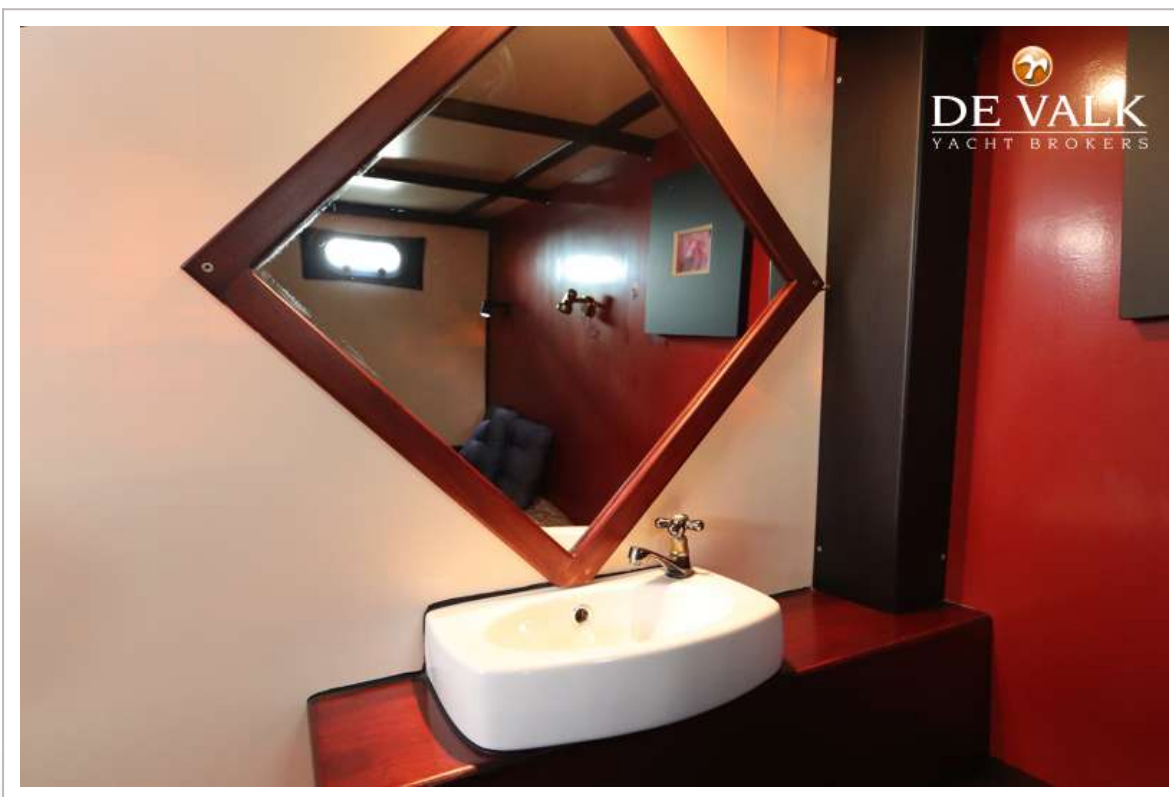
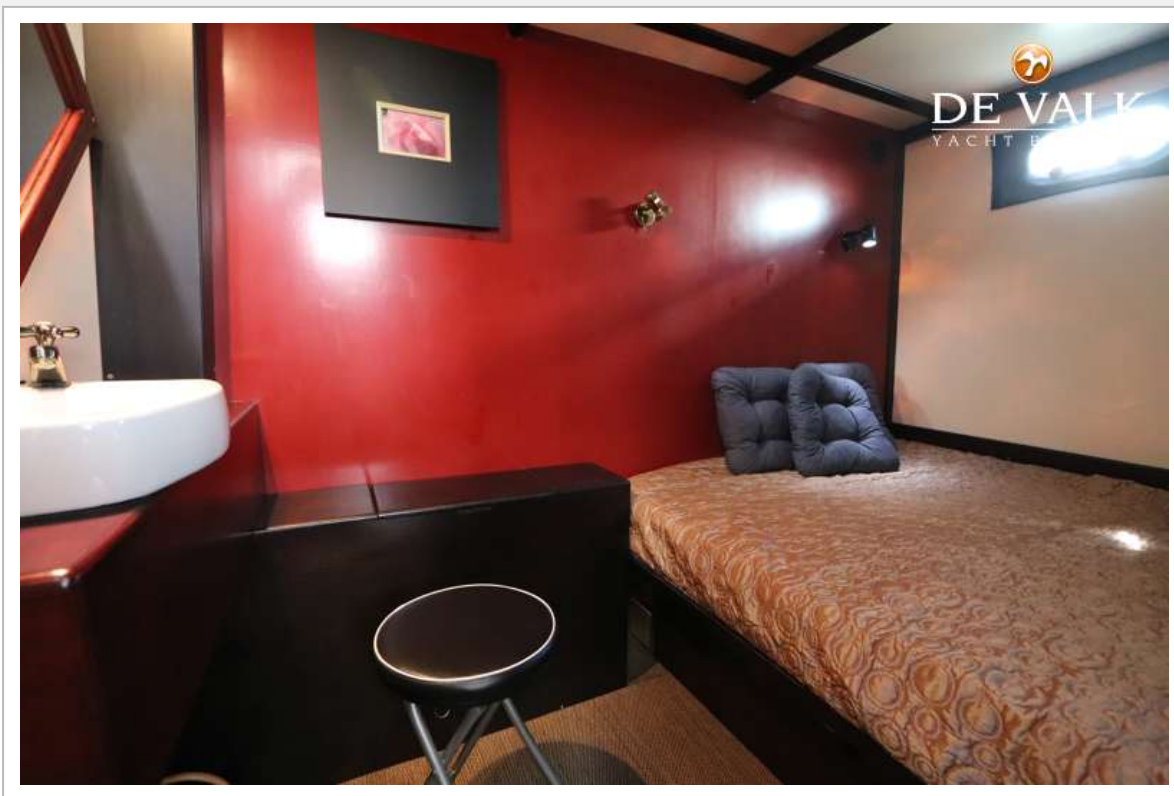


# ALIBI 44 LONG RANGE TRAWLER

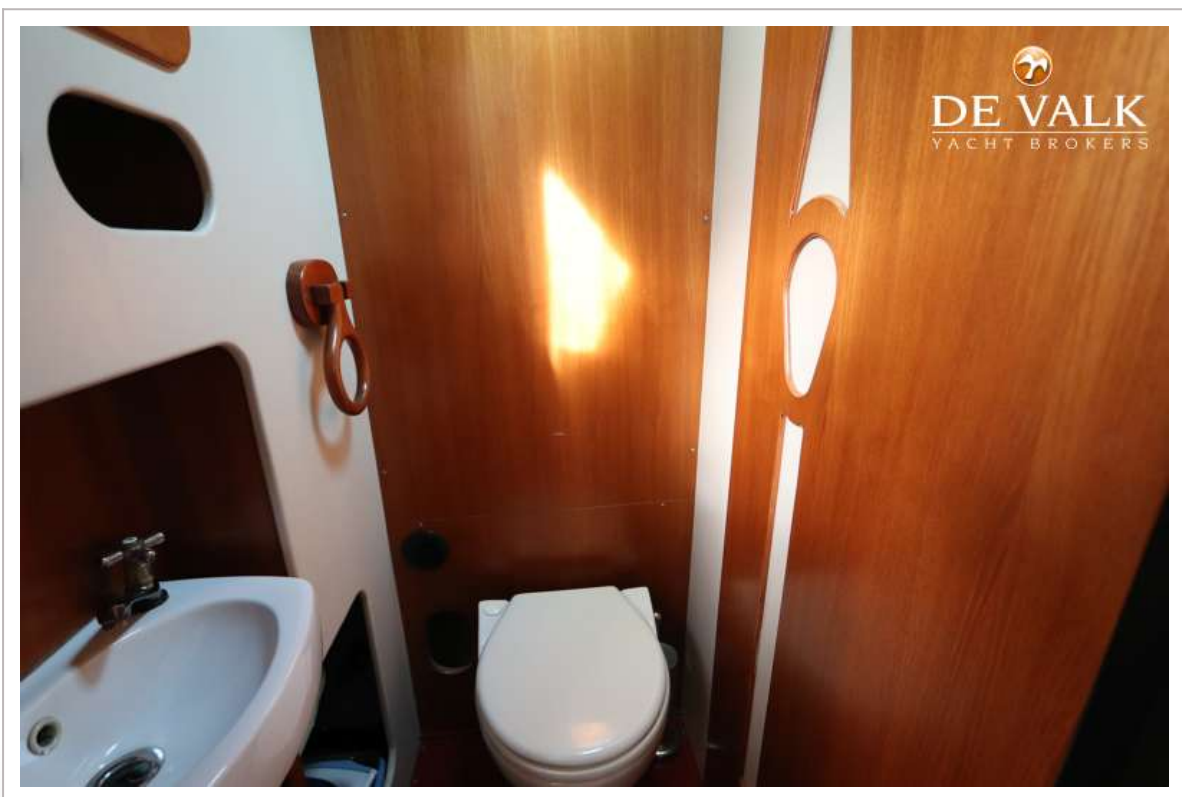
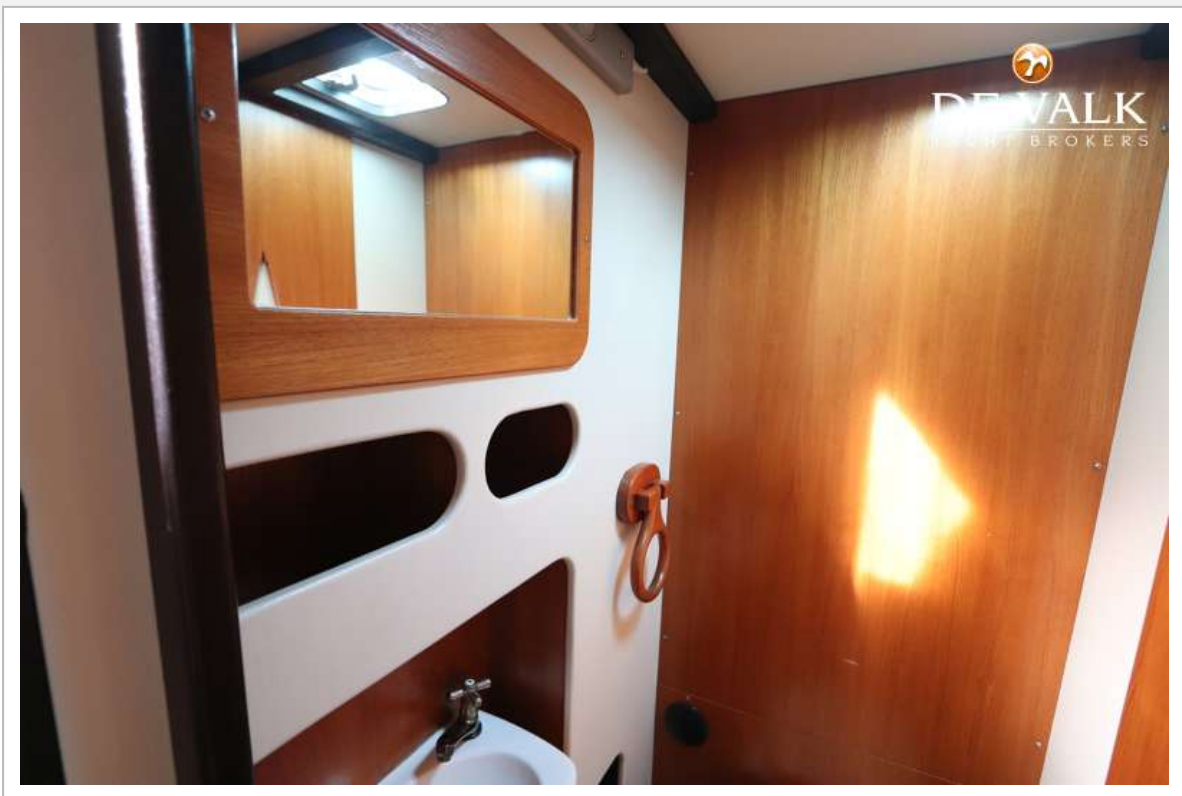




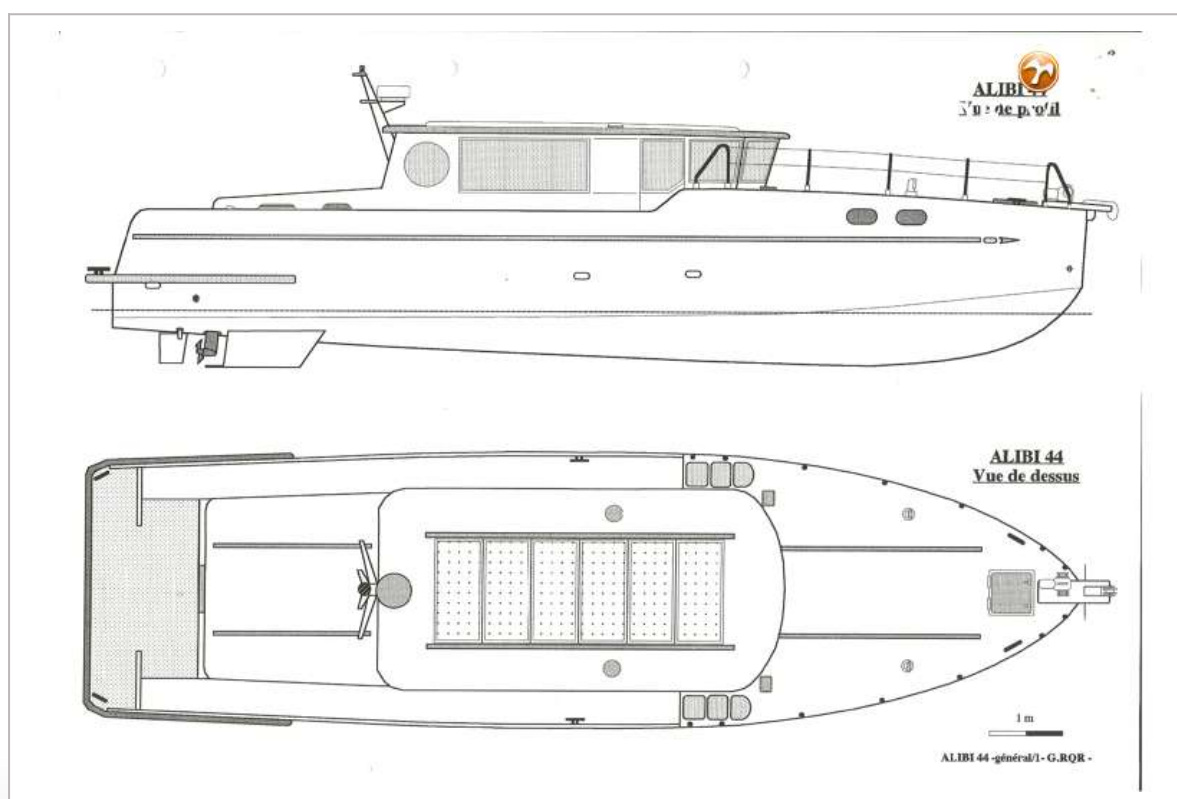
## ALIBI 44 LONG RANGE TRAWLER



# ALIBI 44 LONG RANGE TRAWLER

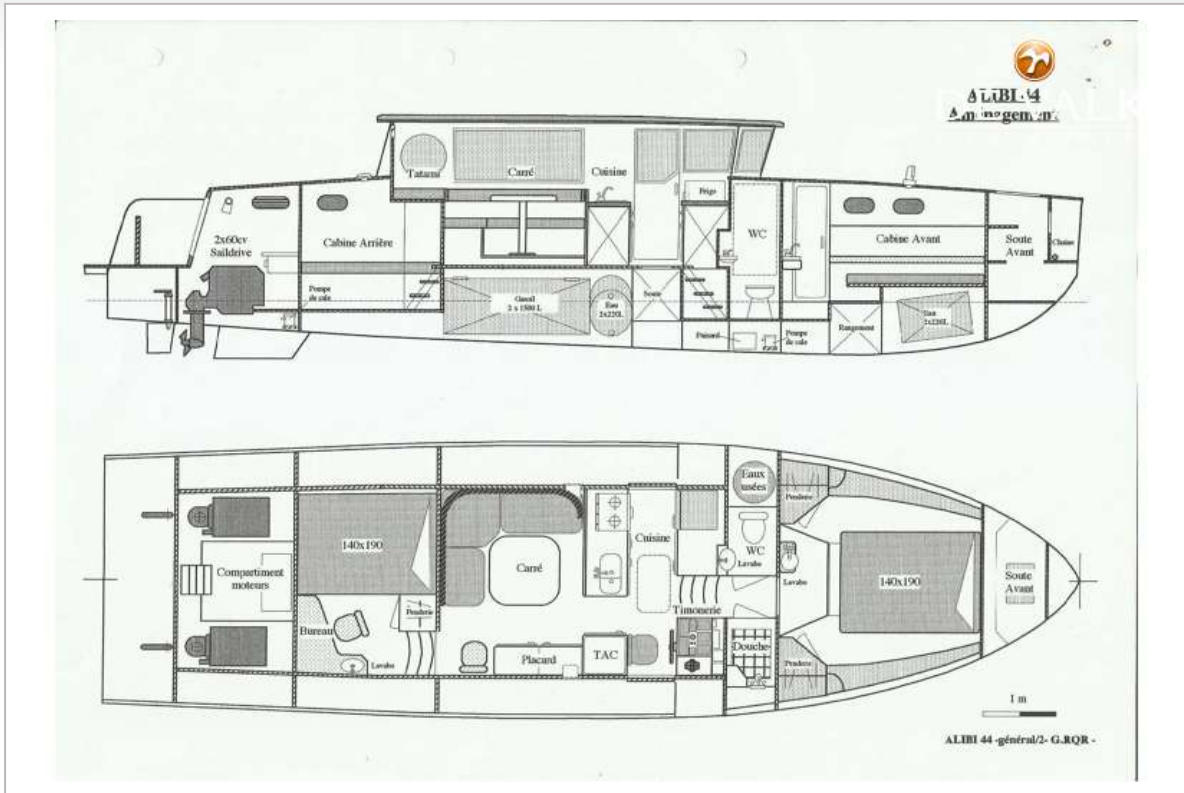


# ALIBI 44 LONG RANGE TRAWLER





# ALIBI 44 LONG RANGE TRAWLER



# ALIBI 44 LONG RANGE TRAWLER



# ALIBI 44 LONG RANGE TRAWLER

