



## LINSSEN GRAND STURDY 380 SEDAN

# LINSSEN GRAND STURDY 380 SEDAN

## BROKER'S COMMENTS

Neat, solid, and seaworthy Linssen Grand Sturdy 380 Sedan. Very easy to handle thanks to the bow and stern thrusters. Extremely comfortable with a spacious single-level living area (helm – galley – saloon – patio doors – open cockpit), central heating, double glazing, generator, air conditioning and an open roof. This motor yacht is moored on the Grevelingenmeer in Zeeland. If you would like to view this beautiful motorboat, please contact De Valk Sint Annaland to schedule an appointment.

*Jan-Ward van Dantzig*

## SPECIFICATIONS

<b>Dimensions</b>	11.60 x 3.85 x 1.15 (m)	<b>Builder</b>	Linssen Yachts B.V. - Maasbracht
<b>Built</b>	2006	<b>Cabins</b>	2
<b>Material</b>	Steel	<b>Berths</b>	4
<b>Engine(s)</b>	1 x Vetus DT-44425A diesel	<b>Hp/Kw</b>	114.00 (hp), 83.90 (kw)
<b>Asking price</b>	sold (VAT )	<b>Lying</b>	elsewhere / Not at sales office

## CONTACT

<b>Sales office</b>	De Valk Sint Annaland B.V.	<b>Telephone</b>	+31 (0)166 601 000
<b>Address</b>	Koelhuisweg 4 4697 RM Sint Annaland NL	<b>E-mail</b>	sintannaland@devalk.nl

## DISCLAIMER

These particulars are given in good faith as supplied but cannot be guaranteed.



# LINSSEN GRAND STURDY 380 SEDAN

## GENERAL

Model	LINSSEN GRAND STURDY 380 SEDAN
Type	motor yacht
LOA (m)	11,60
LWL (m)	9,55
Beam (m)	3,85
Draft (m)	1,15
Air draft (m)	4,00
Air draft min (m)	2,85
Headroom (m)	1,95
Year built	2006
Launched	2007
Builder	Linssen Yachts B.V. - Maasbracht
Country	The Netherlands
Designer	Linssen Yachts B.V.
Displacement (t)	16,3
CE norm	B
Hull material	steel
Hull colour	blue Painted dark blue by Linssen Yachts in 2018
Hull thickness (mm)	6/5
Hull shape	hard chine
Superstructure material	steel
Superstructure (mm)	4
Deck plate thickness (mm)	4
Rubbing strake	fender rope & hard rubber around bathing platform
Deck material	steel
Deck finish	teak Refurbished in 2018 (including new caulking)
Superstructure deck finish	non-skid paint
Cockpit deck finish	teak Refurbished in 2018 (including new caulking)
Antifouling (year)	New layer was applied in 2024
Dorades	1 x Stainless steel shell on the deck hatch of the bathroom



# LINSSEN GRAND STURDY 380 SEDAN

Window frame	aluminium
Window material	double glazing With a cover over the 5 front windows (New in 2021)
Deckhatch	Gebo with shades & mosquito screens
Portholes	aluminium With mosquito screens
Insulation	glasswool
Mast can be lowered	manual (with a teak support)
Fuel tank (litre)	steel 2 x 450
Level indicator (fuel tank)	yes
Freshwater tank (litre)	polyethylene 2 x 220
Level indicator (freshwater)	yes
Blackwater tank (litre)	polyethylene 220
Level indicator (blackwater)	Gobius 4
Blackwater tank extraction	deck extraction + pump (electric Exalto vacuum pump)
Wheel steering	hydraulic Teak Stado steering wheel
Inside helm position	Vetus MTC 72 - MT130 hydraulic system
Emergency tiller	yes
More info on hull	Hull above & below waterline was sandblasted by Linssen in 2018
More info on paintwork	New paint systems applied on hull by Linssen in 2018
Extra info	New antifouling system on underwater hull by Linssen in 2018
Extra info	Middle window can be opened and is supported with a gas spring
Extra info	PS Middle steering house window slides up/down & mosquito screen

## ACCOMMODATION

Cabins	2
Berths	4
Interior	cherry Finished with unique wenge frames
Floor	teak and holly (teak with ash)
Open cockpit	yes
Pilot house/deck saloon	Headroom : 1,95 - 2,10 m



# LINSSSEN GRAND STURDY 380 SEDAN

<b>Saloon</b>	yes
<b>Headroom saloon (m)</b>	1,95 - 2,10
<b>Sliding roof</b>	manual
<b>Heating</b>	central heating Eberspacher Hydronic M D5W5
<b>Air-conditioning</b>	single cycle airco 1 x Dometic Cruisair 10.000 BTU (in the owners cabin)
<b>Dinette</b>	Half round saloon sofa on starboard side (2 x drawer underneath)
<b>Opening door to cockpit</b>	2 x Opening door to aft deck / cockpit
<b>Galley</b>	On Port Side with a pull-out waste bin - Headroom: 1,95 m
<b>Countertop</b>	corian Grey
<b>Sink</b>	stainless steel 1 x
<b>Cooker</b>	ceramic 2 x Burner - Siemens
<b>Microwave/oven combi</b>	& Grill - ATAG - Electric (220V)
<b>Fridge</b>	Coolmatic front loader with a compressor
<b>Freezer</b>	Small freezing compartment in the Coolmatic fridge
<b>Hot water system</b>	220V + engine 45 Liter AquaH Marine Water Heater (Renewed in 2018)
<b>Water pressure system</b>	electrical With a Jabsco waterpump
<b>Crockery</b>	(for 4 persons) & glasses (glasses with Linssen logo)
<b>Owners cabin</b>	French bed Front cabin - Headroom : 1,94 m
<b>Bed length (m)</b>	2,05 x 1,60
<b>Wardrobe</b>	hanging/drawers/shelves
<b>Bathroom</b>	shared The bathroom features a modern towel radiator. Headroom : 1,88 m
<b>Toilet</b>	shared
<b>Toilet system</b>	electric Jabsco Quiet Flush
<b>Wash basin</b>	in the bathroom
<b>Shower</b>	shared With a sliding door & automatic drain pump - Headroom : 1,98 m
<b>Extra info</b>	Slatted base under mattress in owner's cabin
<b>Guest cabin 1</b>	bunk bed On starboard side - Headroom : 1,95 m
<b>Bed length (m)</b>	2 x 2,05 x 0,70



# LINSSEN GRAND STURDY 380 SEDAN

Wardrobe	shelves
Extra info	Headroom in hallway from steering house to front cabin : 1,96 m
Extra info	White curtains & white Luxaflex for windows in steering house
Extra info	Ceiling finished in Novolux with LED interior lights

## MACHINERY

No of engines	1
Make	Vetus
Type	DT-44425A
HP	114
kW	83.90
Fuel	diesel
Year installed	2006
Maximum speed (kn)	8,5
Cruising speed (kn)	7
Engine hours	955
Engine cooling system	freshwater heat exchanger
Drive	shaft
Engine controls	bowden cable
Gearbox	hydraulic ZF Hurth ZF45 / 25:1
Bowthruster	electric Vetus 95kgf - with remote controle
Sternthruster	electric Vetus 95kgf - with remote controle
Exhaust	watercooled
Thrust bearing	Python P80 S40
Propeller type	fixed
Propeller blades	4
Propeller shaft material	stainless steel
Shaft lubrication	water
Electric bilge pump	Jabsco & a loose Johnson pump with longer hose
Bilge alarm	yes
Electrical installation	12 & 220 Volt



# LINSSEN GRAND STURDY 380 SEDAN

Generator	silent separator Onan MDKAU 4.0 (Halyard HMI water separator)
Running hours generator	140
Start battery	4 x 90 Ah (2018), also connected to the bow- & stern thruster
Service battery	4 x 90 Ah AGM Mastervolt (2018)
Battery charger	Mastervolt Mass 12V/60A
Inverter	Mastervolt Mass Sine 12V/2000W
Solar panel	2 x (New in 2020 - connected to the engine batteries)
Diode battery combiners	yes
Shorepower	with cable
Extra info	Separ Diesel filter with water separator
Extra info	Engine & generator have been maintained annually
Extra info	Several 12 Volt & 220 Volt sockets throughout the interior

## NAVIGATION

Electric compass	Raymarine ST60 Compass
Depth sounder/log	Raymarine ST60+ Tridata
VHF	Raymarine Ray 240
Autopilot	Raymarine ST6002 & Raymarine S100 (wire-less remote) Controller
Rudder angle indicator	In the autopilot display
Plotter/GPS	Raymarine Axiom+ 9' (New in 2022)
Electronic chart(s)	1 x Navionix
Navigation lights	Complete + 2x decklight + dimmable cockpit light
Searchlight	Jabsco Ray-Line 135 SL with remote at the steering wheel
Extra info	Custom made steering seat with extra cupboard space underneath
Extra info	Nice bar with extendable glass racks between galley & helm seat

## EQUIPMENT

Cockpit cover	Beige - New in April 2024 - Headroom : 1,95 m
---------------	---



# LINSSEN GRAND STURDY 380 SEDAN

<b>Bimini</b>	By rolling up/unzipping all rear & side panels of cockpit cover
<b>Winter cover</b>	Only over the cockpit
<b>Cockpit cushions</b>	Dark Blue (New in 2023)
<b>Cockpit table</b>	Teak - with a (folding) passage in the middle
<b>Bathing platform</b>	With teak
<b>Boarding ladder</b>	stainless steel With teak steps
<b>Deck shower</b>	On the bathing platform (hot & cold pressured water)
<b>Anchor</b>	1 x
<b>Anchor chain</b>	yes
<b>Windlass</b>	electrical Vetus Alexander III, control on bow & remote at steering wheel
<b>Deck wash</b>	yes
<b>Sea railing</b>	stainless steel (double)
<b>Grab rail (superstructure)</b>	stainless steel
<b>Pushpit</b>	Stainless steel
<b>Lifebuoy</b>	Round white/red buoy
<b>Wiper</b>	2 x Exato, with fresh water spray
<b>Horn</b>	electric
<b>Radar reflector</b>	Tri-lens
<b>Fenders</b>	8 x With stainless steel fender storage baskets (2x2 fenders)
<b>Mooring lines</b>	yes
<b>TV</b>	Sharp (on a rails - electric up/down) with Strong Dolby Audio
<b>Radio-cd player</b>	Sony Drive - S radio/cd-player / MP3 / WMA
<b>Cockpit speakers</b>	2 x Sony
<b>Speakers in salon</b>	2 x Sony
<b>Clock - barometer</b>	yes
<b>Fire extinguisher</b>	2 x 4 KG Saval
<b>Latest extinguisher survey</b>	Need to be surveyed / renewed
<b>Auto extinguisher system</b>	In Engine room (need to be surveyed / renewed)
<b>Extra info</b>	The cockpit table is completely removable
<b>Extra info</b>	Plenty of storage space under cockpit floor, across full width
<b>Extra info</b>	3 x Storage under the cockpit sofa





# LINSSEN GRAND STURDY 380 SEDAN



# LINSSEN GRAND STURDY 380 SEDAN



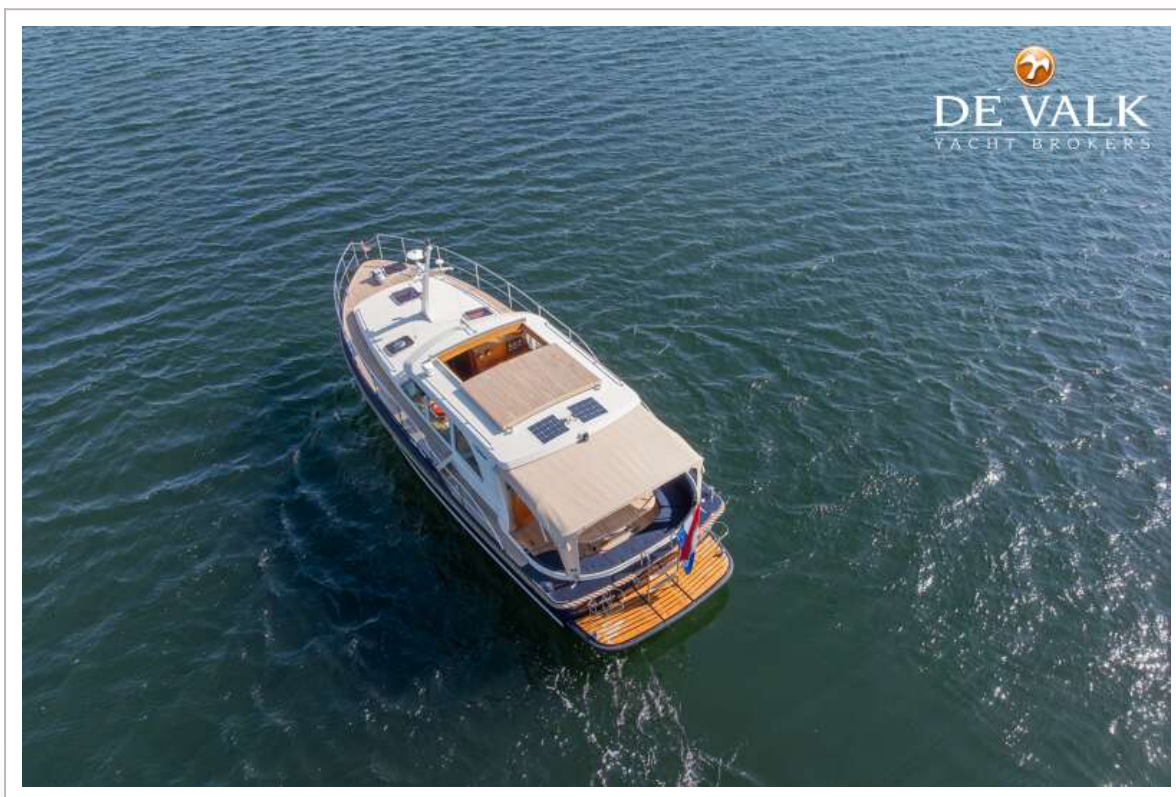
# LINSSEN GRAND STURDY 380 SEDAN



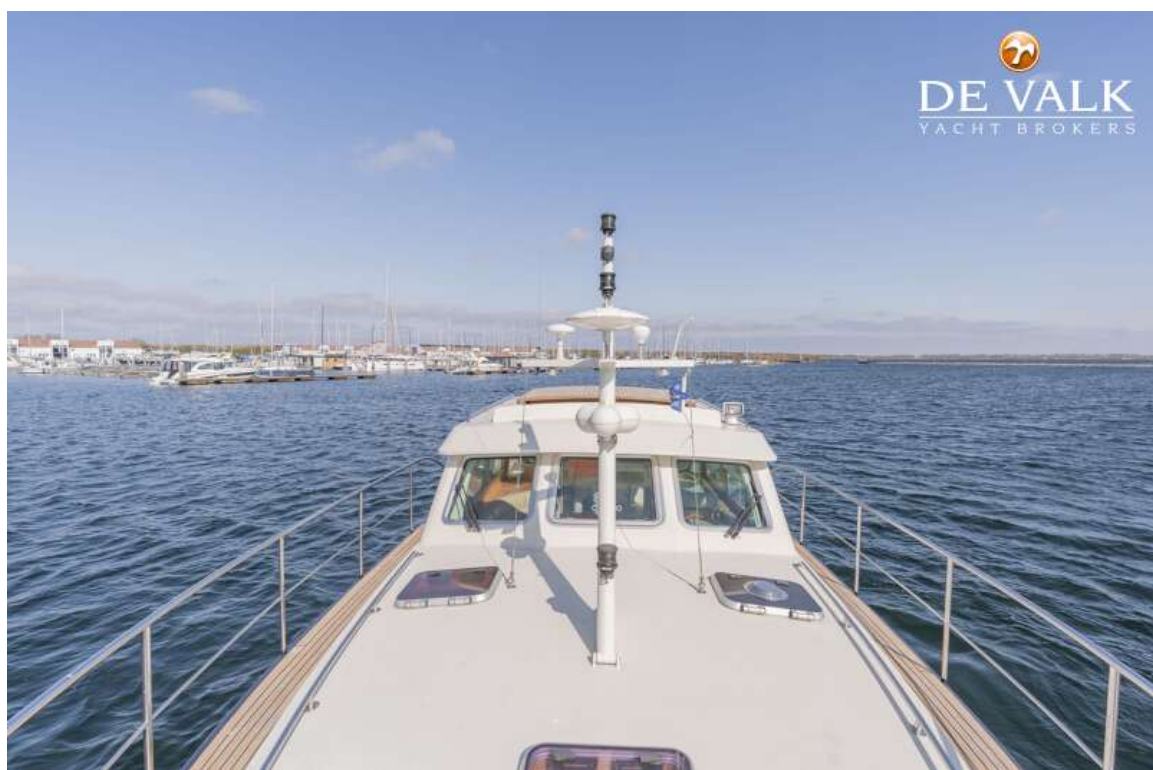
# LINSSEN GRAND STURDY 380 SEDAN



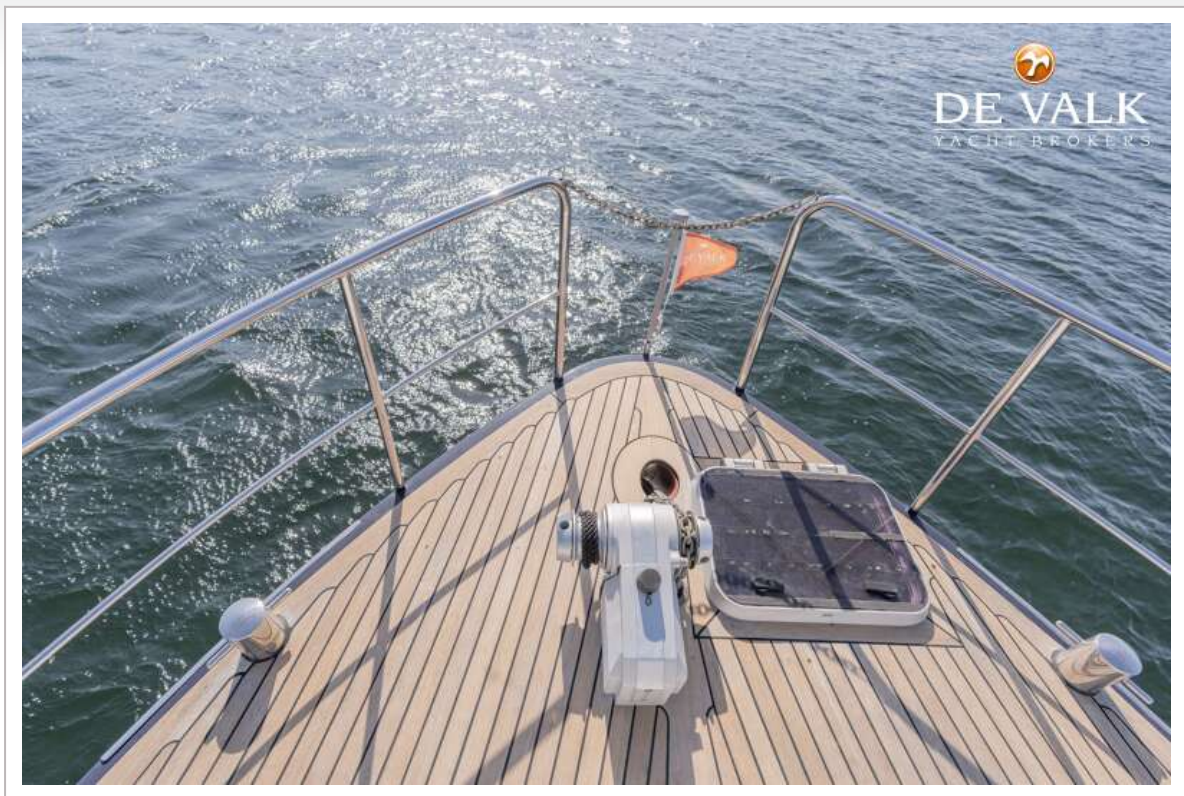
# LINSSEN GRAND STURDY 380 SEDAN



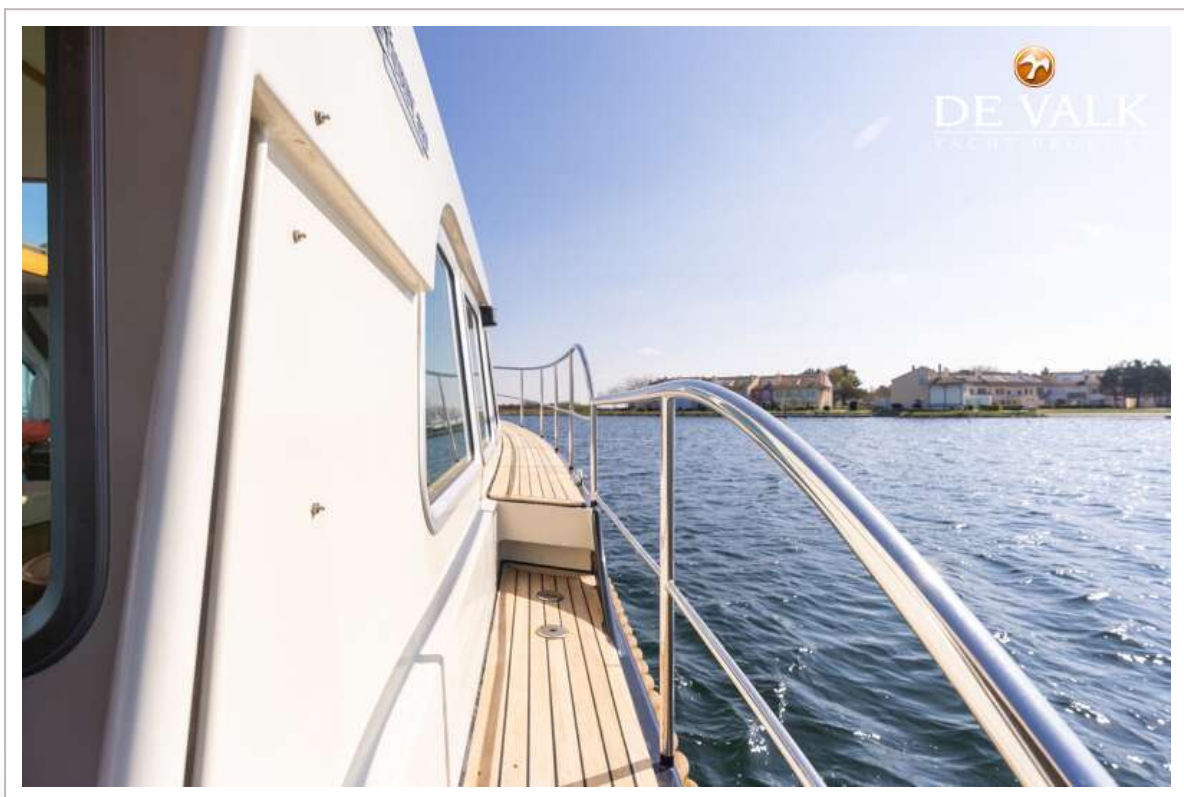
# LINSSEN GRAND STURDY 380 SEDAN



# LINSSEN GRAND STURDY 380 SEDAN



# LINSSEN GRAND STURDY 380 SEDAN



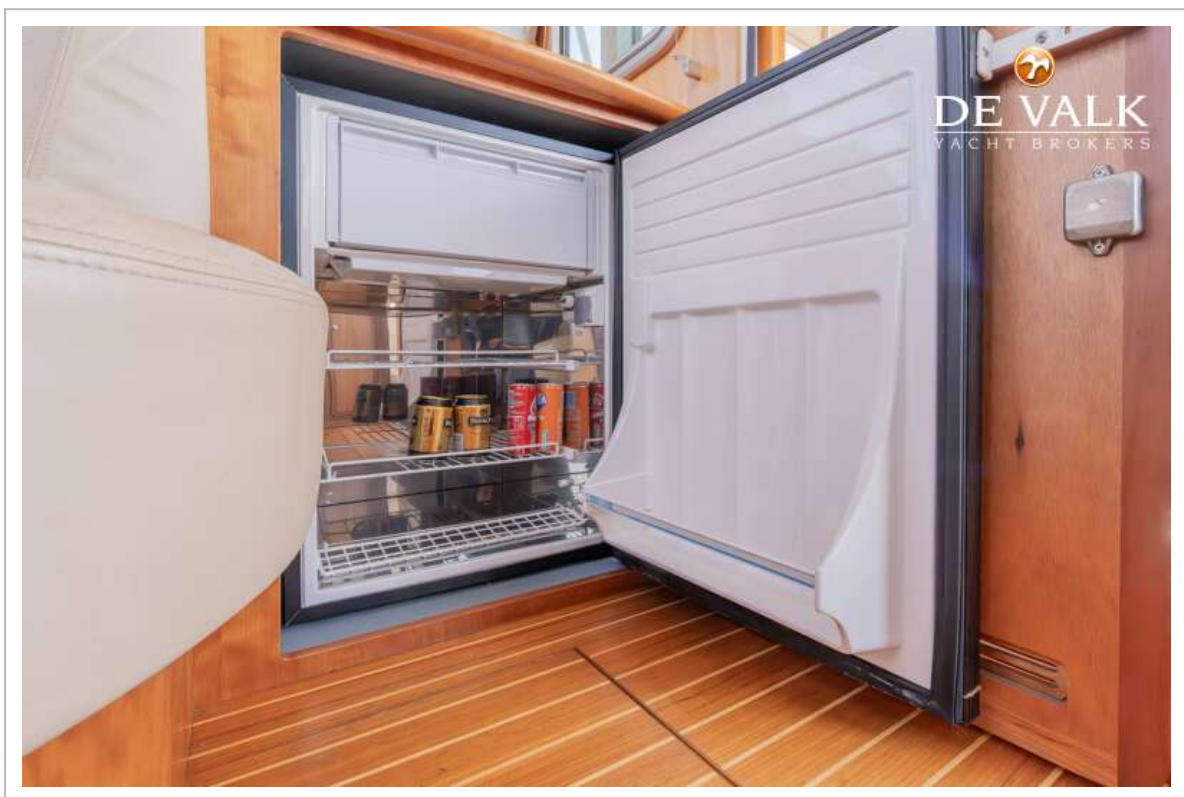
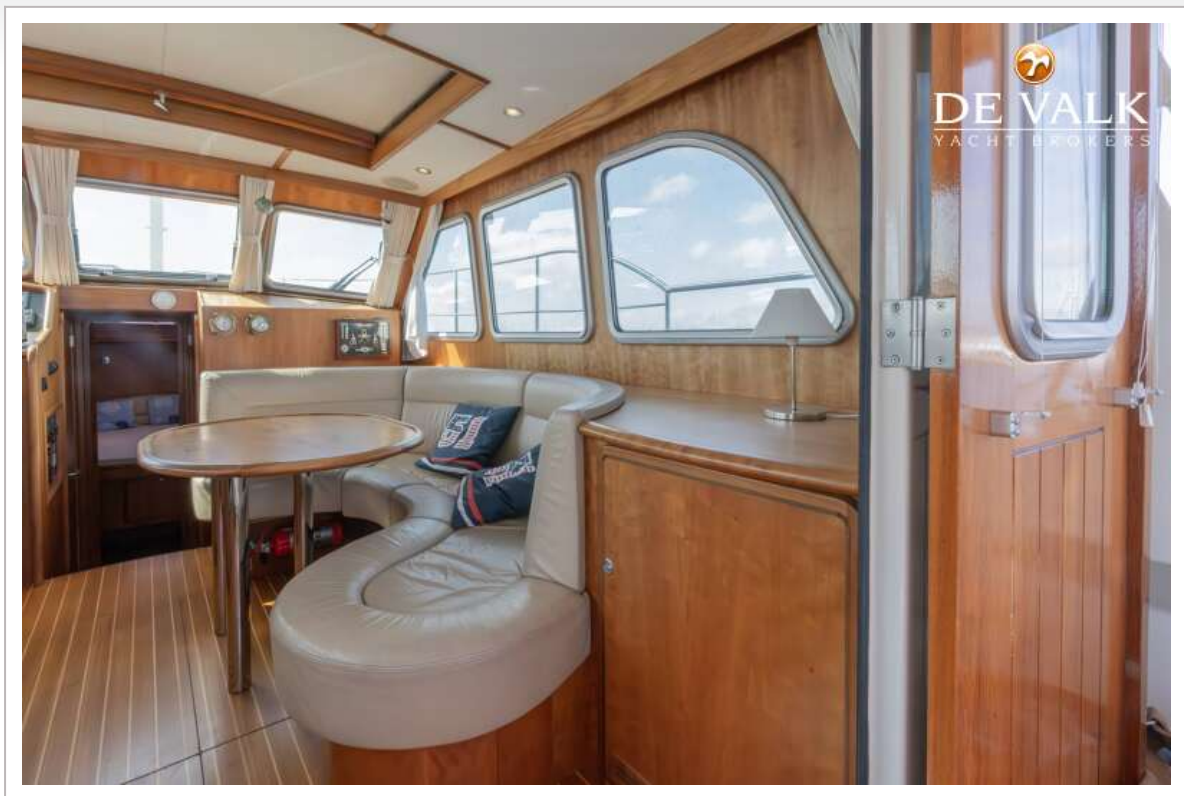
# LINSSEN GRAND STURDY 380 SEDAN



# LINSSEN GRAND STURDY 380 SEDAN



# LINSSEN GRAND STURDY 380 SEDAN



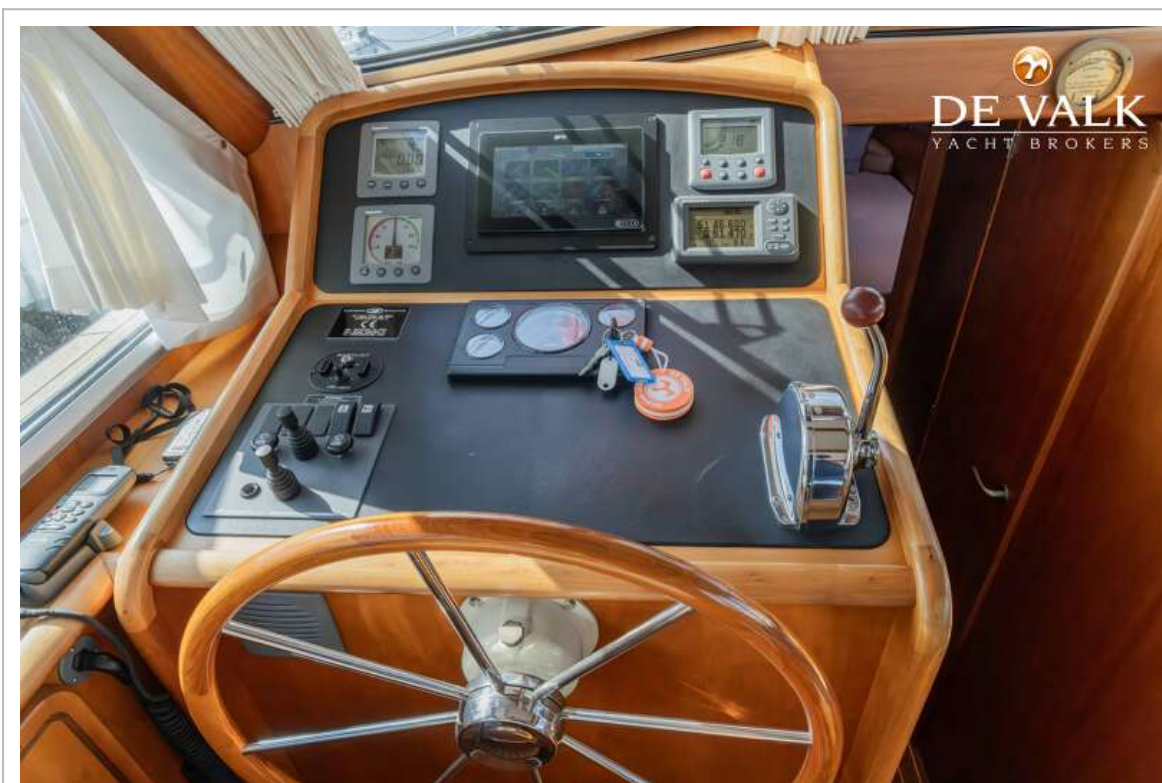
# LINSSEN GRAND STURDY 380 SEDAN



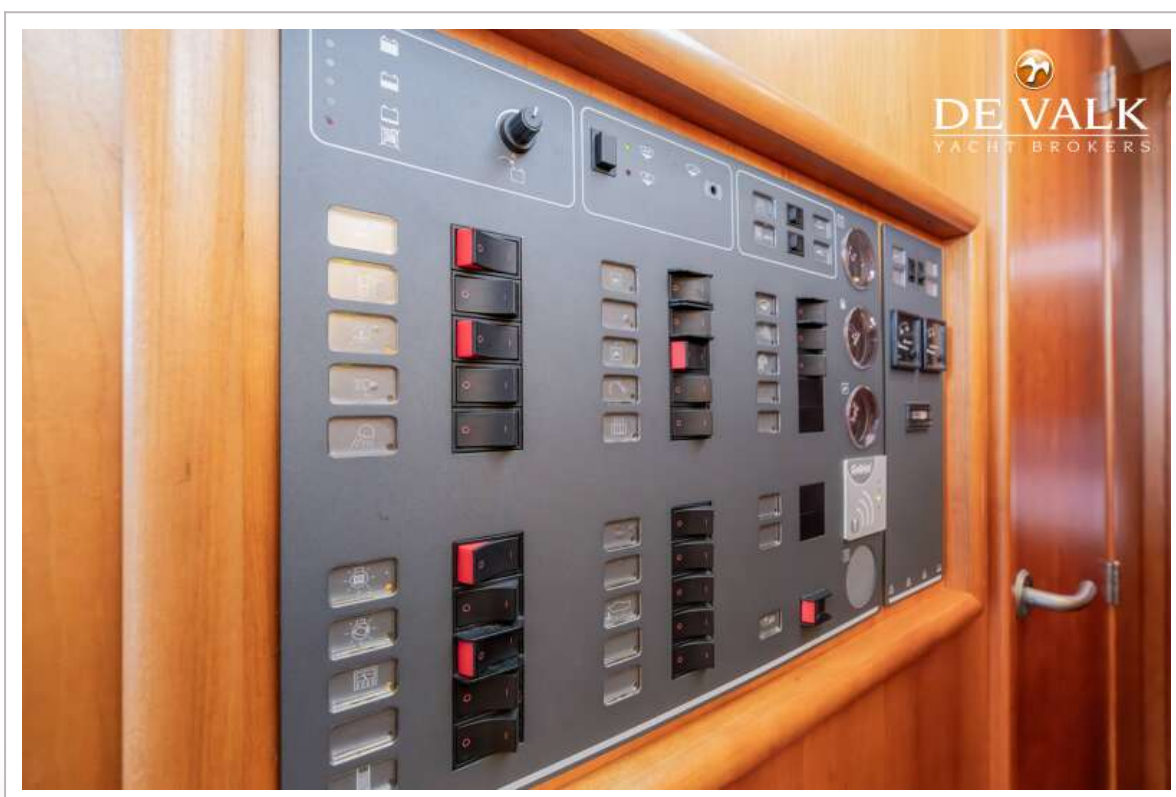
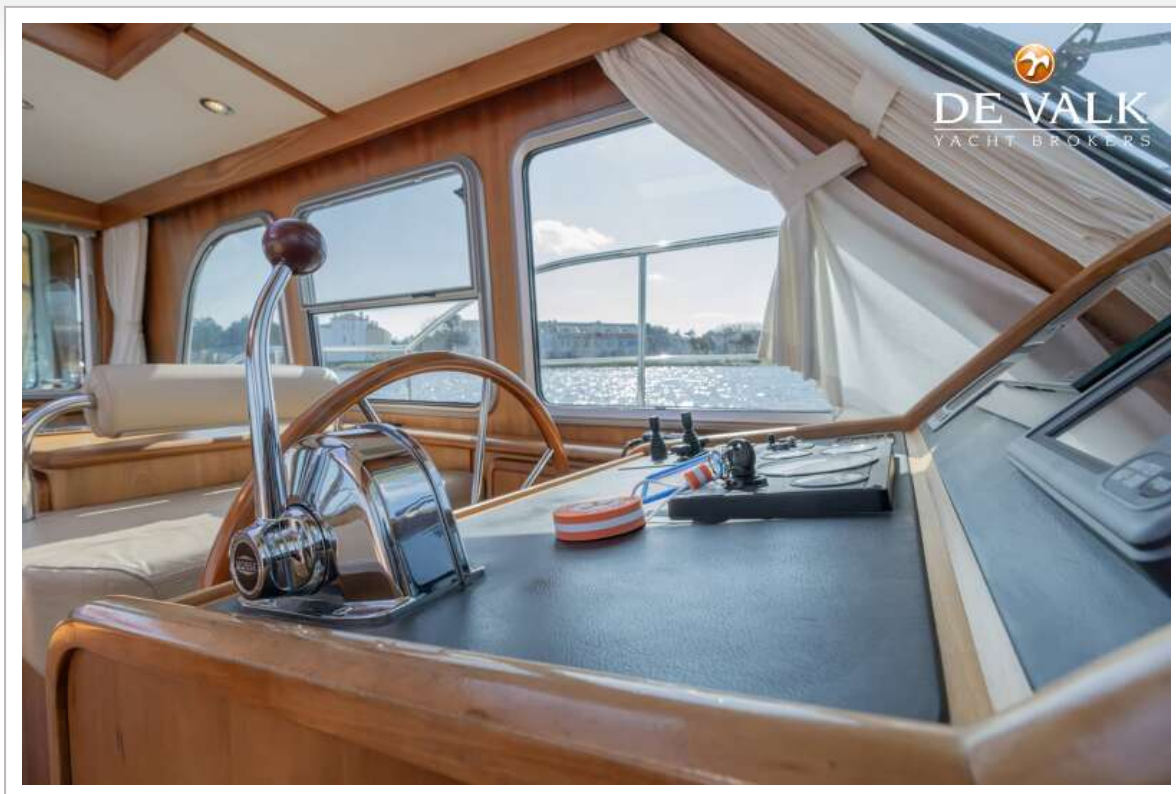
# LINSSEN GRAND STURDY 380 SEDAN



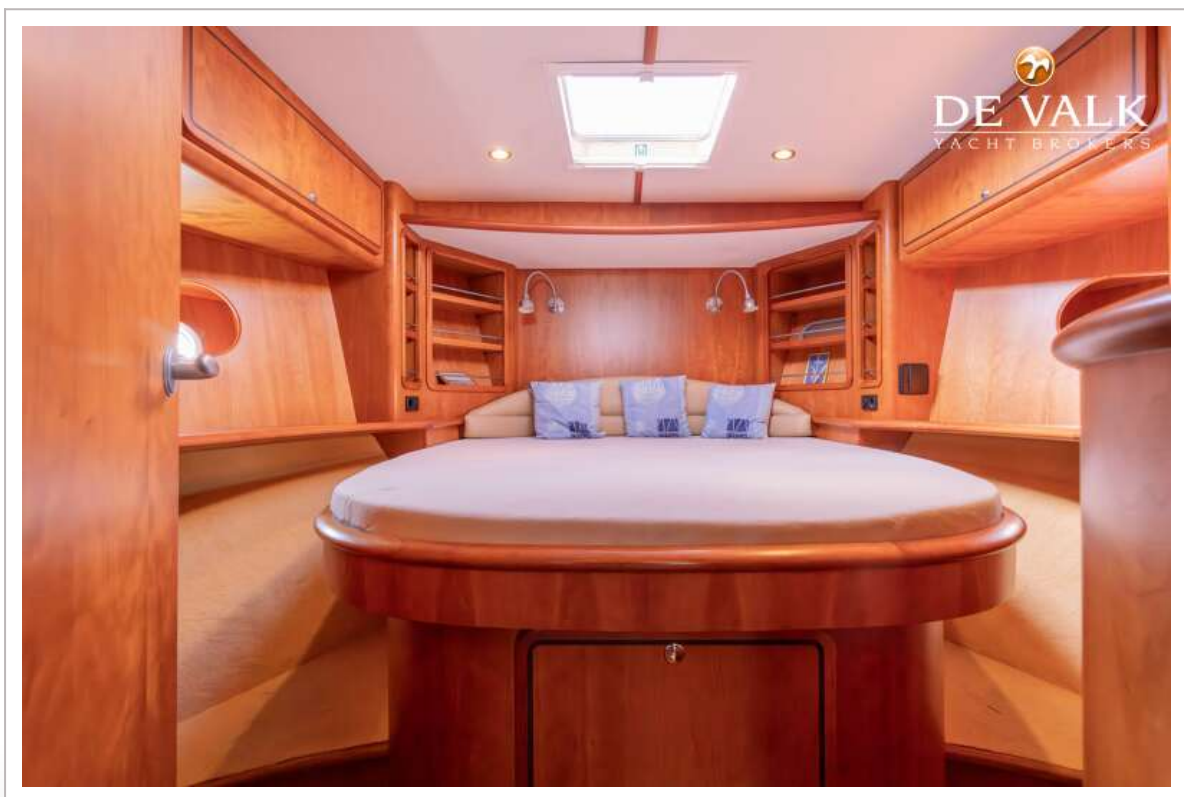
# LINSSEN GRAND STURDY 380 SEDAN



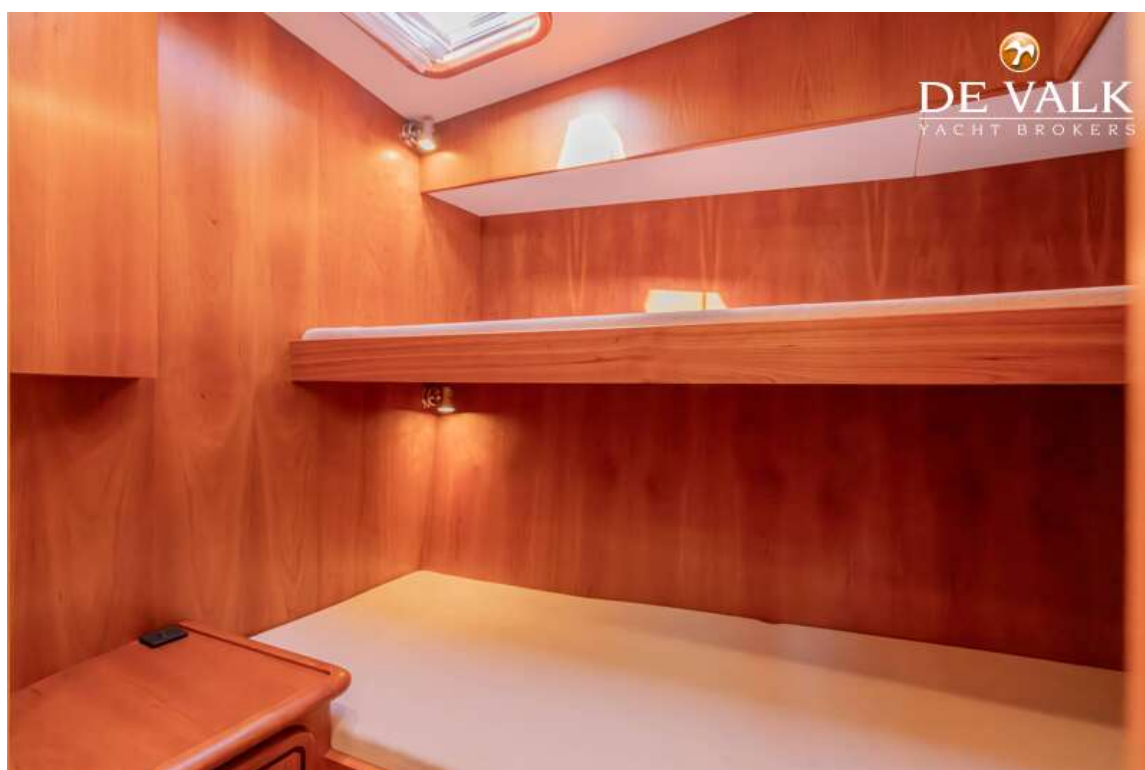
# LINSSEN GRAND STURDY 380 SEDAN



# LINSSEN GRAND STURDY 380 SEDAN



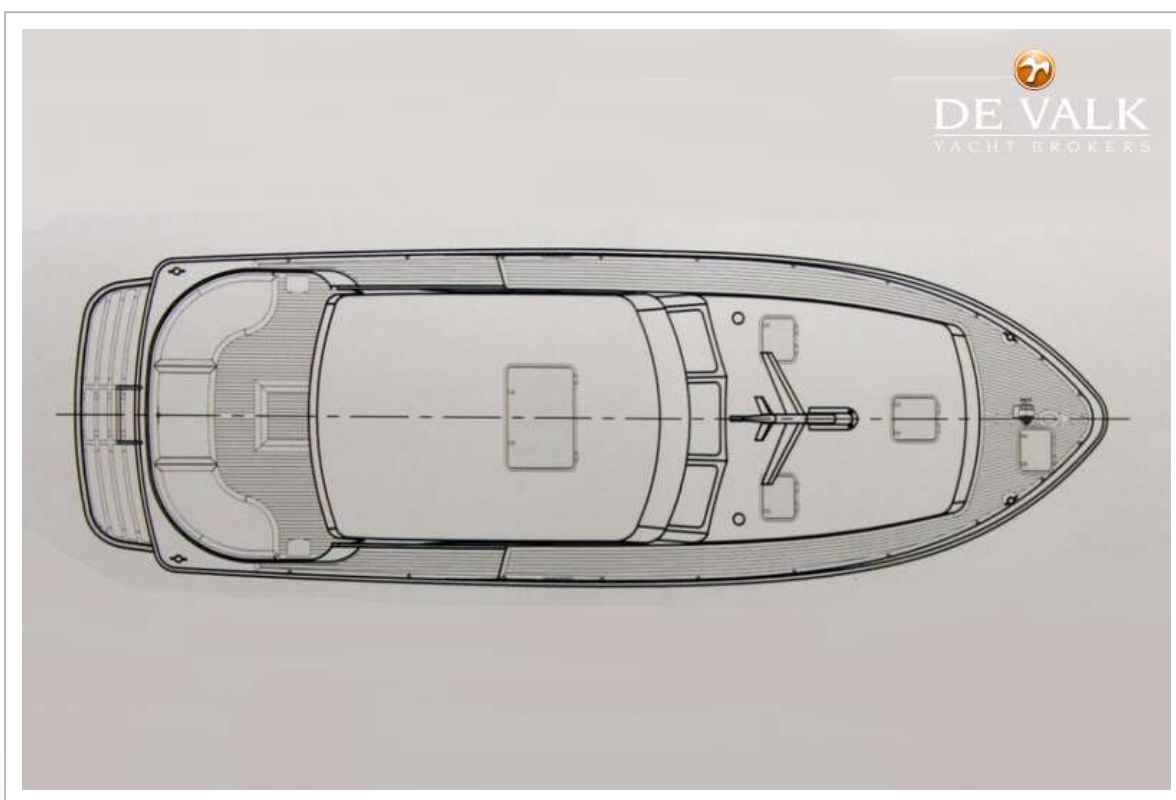
# LINSSEN GRAND STURDY 380 SEDAN



# LINSSEN GRAND STURDY 380 SEDAN



# LINSSEN GRAND STURDY 380 SEDAN



# LINSSEN GRAND STURDY 380 SEDAN



# LINSSEN GRAND STURDY 380 SEDAN

