



DE VALK
YACHT BROKERS



NAUTICAT 321



DE VALK
YACHT BROKERS

BROKERAGE | CHARTER | BERTHS | FINANCE | INSURANCE | YACHT MANAGEMENT

BROKER'S COMMENTS

Well proven pocket sized great motor sailor, built by Nauticat Yachts OY, a high quality yard in Finland, with a history of more than 3000 built yachts. This model is well equipped and maintained. Lots of renewals have been done. Even standing and running rigging will be replaced this autumn. A fantastic yacht to sail under any weather conditions with her inside and outside steering position! Do find your great opportunity here in the Med and almost the only chance here to own a Nauticat 32 in mint condition.

Willem Koopmans

SPECIFICATIONS

Dimensions	9.98 x 3.24 x 1.65 (m)	Builder	Siltala Yachts
Built	1999	Cabins	2
Material	GRP	Berths	6
Engine(s)	1 x Yanmar 3GM30-39 diesel	Hp/Kw	29.00 (hp), 21.32 (kw)
Asking price	sold (VAT)	Lying	contact sales office

CONTACT

Sales office	De Valk Costa Blanca	Telephone	+34 96 50 21 569
Address	Costa Blanca Region 03730 Javea Alicante ES	E-mail	costablanca@devalk.nl

DISCLAIMER

These particulars are given in good faith as supplied but cannot be guaranteed.



GENERAL

Model	NAUTICAT 321
Type	sailing yacht
LOA (m)	9,98
LWL (m)	8,30
Beam (m)	3,24
Draft (m)	1,65
Air draft (m)	13,80
Headroom (m)	1,90
Year built	1999
Builder	Siltala Yachts
Country	Finland
Designer	Kaj Gustafsson
Displacement (t)	6
Ballast (tonnes)	lead 1,8
CE norm	A
Hull material	GRP
Hull colour	white
Hull shape	round-bilged
Keel type	fin keel
Superstructure material	GRP
Rubbing strake	rubber
Deck material	GRP
Deck finish	non-skid moulded in
Superstructure deck finish	non-skid moulded in
Cockpit deck finish	teak
Antifouling (year)	2020 October
Dorades	yes
Window frame	aluminium
Window material	tempered glass
Portholes	aluminium



Insulation	yes
Fuel tank (litre)	polyethylene 250
Level indicator (fuel tank)	yes
Freshwater tank (litre)	polyethylene 2 x 220, total 440
Level indicator (freshwater)	yes
Blackwater tank (litre)	stainless steel 80
Wheel steering	hydraulic
Inside helm position	yes
Outside helm position	hydraulic
Emergency tiller	yes

ACCOMMODATION

Cabins	2
Berths	6
Interior	teak
Layout	yes
Floor	teak and holly
Pilot house/deck saloon	yes
Headroom saloon (m)	2
Heating	yes
Navigation center	yes
Chart table	yes
Aft Cabin	yes
Dinette	yes
Dinette to convert into berth	Into double berth
Opening door to cockpit	yes
Galley	yes
Countertop	plastic
Sink	stainless steel
Cooker	calor gas 2 burner
Oven	ENO



Fridge	yes
Hot water system	220V + engine Seaward 20 ltr
Water pressure system	electrical
Owners cabin	double bed
Bed length (m)	2
Wardrobe	hanging/drawers/shelves
Bathroom	shared
Toilet	shared
Toilet system	manual
Wash basin	in the bathroom
Shower	shared
Guest cabin 1	double bed
Bed length (m)	2
Wardrobe	hanging/drawers/shelves
Bathroom	shared
Toilet	shared
Toilet system	manual
Wash basin	in the bathroom
Shower	yes

MACHINERY

No of engines	1
Make	Yanmar
Type	3GM30-39
HP	29
kW	21,32
Fuel	diesel
Year installed	1999
Maximum speed (kn)	7,5
Cruising speed (kn)	7
Consumption (l/hr)	3



Range (nm)	400
Engine hours	1200
Engine cooling system	freshwater heat exchanger
Drive	shaft
Engine controls	bowden cable
Gearbox	mechanical
Bowthruster	electric Side power
Propeller type	fixed
Propeller blades	3
Propeller shaft material	Bronze
Manual bilge pump	yes
Electric bilge pump	yes
Batteries	yes
Start battery	1
Service battery	2
Solar panel	yes
Shorepower	with cable

NAVIGATION

Compass	yes
Electric compass	On Pilot
Depth sounder/log	Latest Raymarine I 70
Windset	Raymarine I 70
Autopilot	Raymarine
Radar	Raymarine Quantum 2 with doppler
Radar/GPS/plotter	Raymarine 9" touch

EQUIPMENT

Sprayhood	Only over entrance
Bimini	yes
Sun awning	yes



Cockpit table	yes
Bathing platform	yes
Boarding ladder	yes
Deck shower	yes
Anchor	yes
Anchor chain	New oktober 2020
Windlass	electrical
Sea railing	wood Finish is wood
Life raft	Latest service March 2019
Life raft (pers)	container 6
Wiper	2
Radar reflector	yes
Fenders	yes
Mooring lines	yes
Spare parts	yes
Radio	yes
Clock - barometer	yes
Fire extinguisher	yes

RIGGING

Rigging	sloop
Standing rigging	Rigging check 2020
Brand mast	Seldén
Material mast	aluminium
Spreaders	2
Mainsail	New 2015
Stoway mast	yes
Jib	Never used
Genoa	New 2015
Genoa furler	yes
Gennaker	In good condition, only used 5 times



Boomvang	gasspring Selden
Genoa sheetwinches	2
Halyard winches	2



NAUTICAT 321



NAUTICAT 321

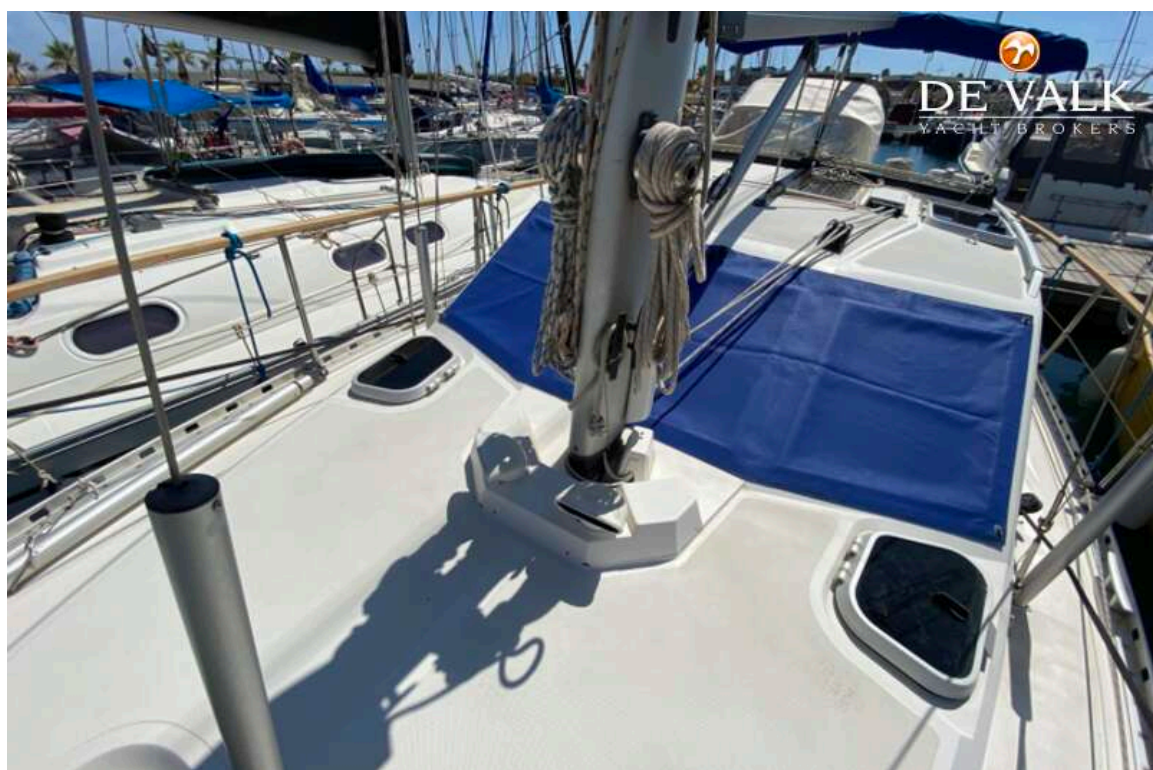








NAUTICAT 321





NAUTICAT 321



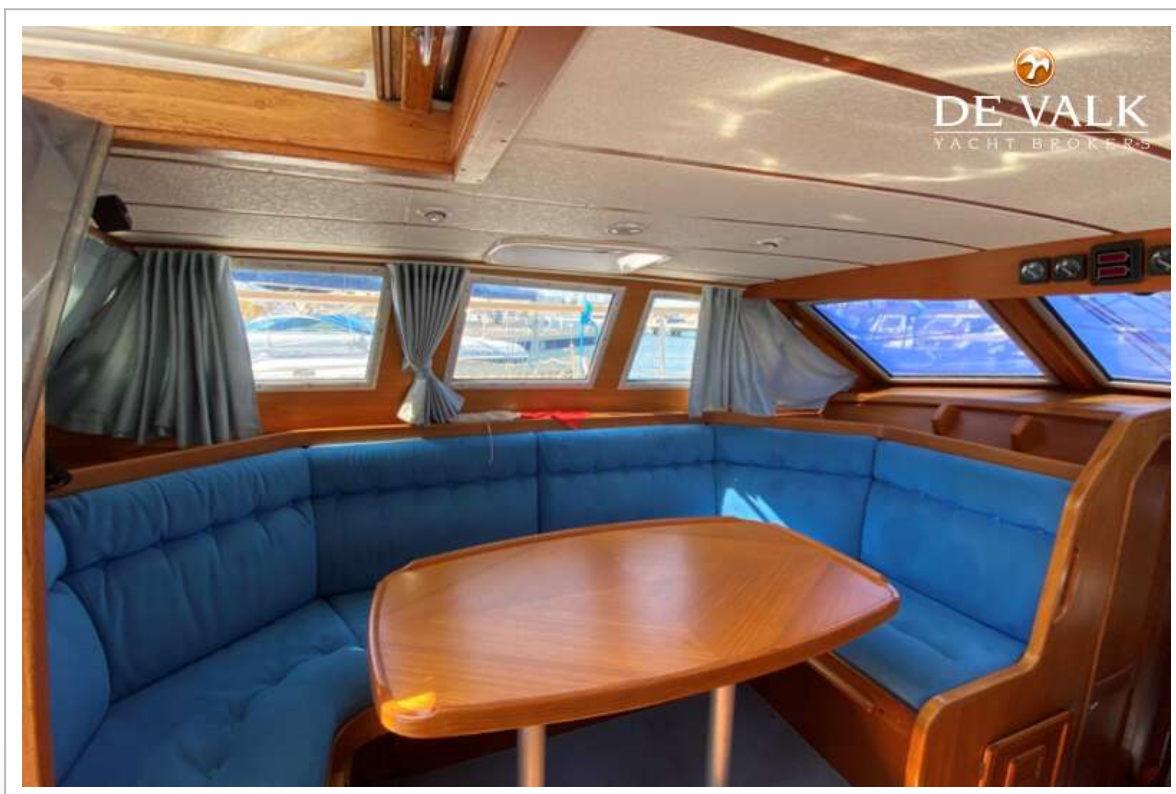
NAUTICAT 321



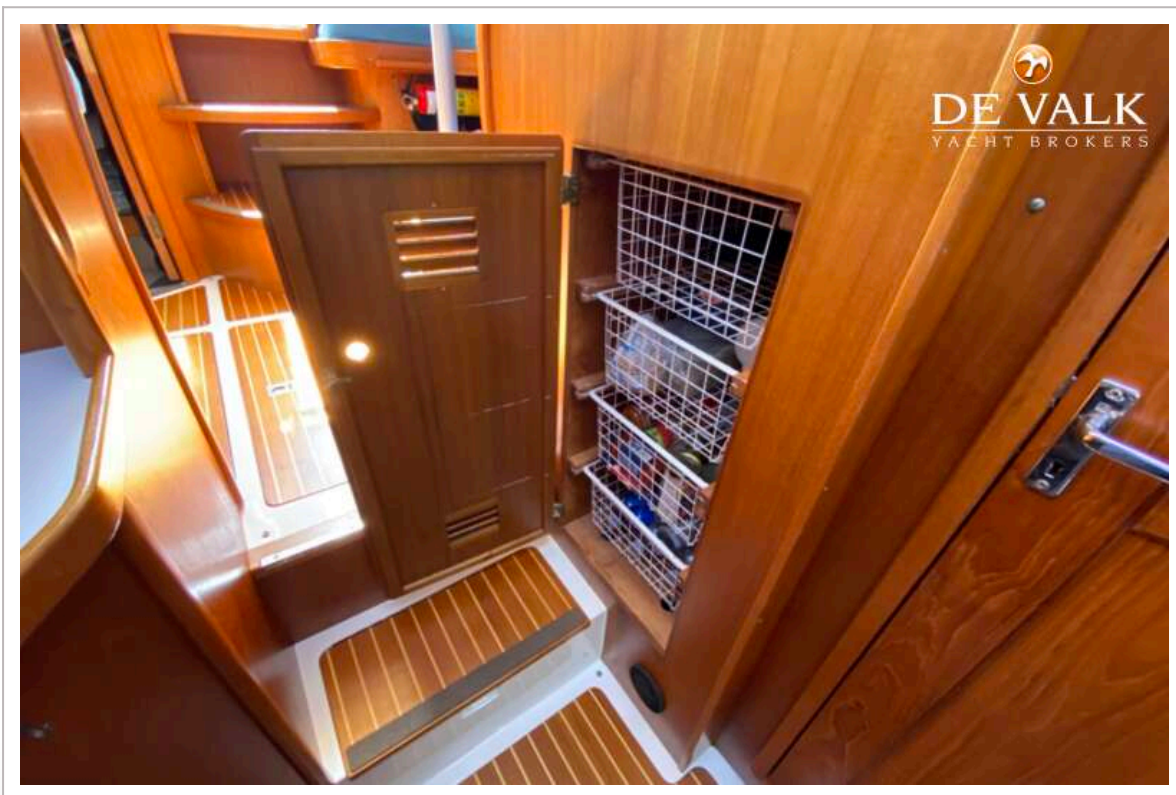
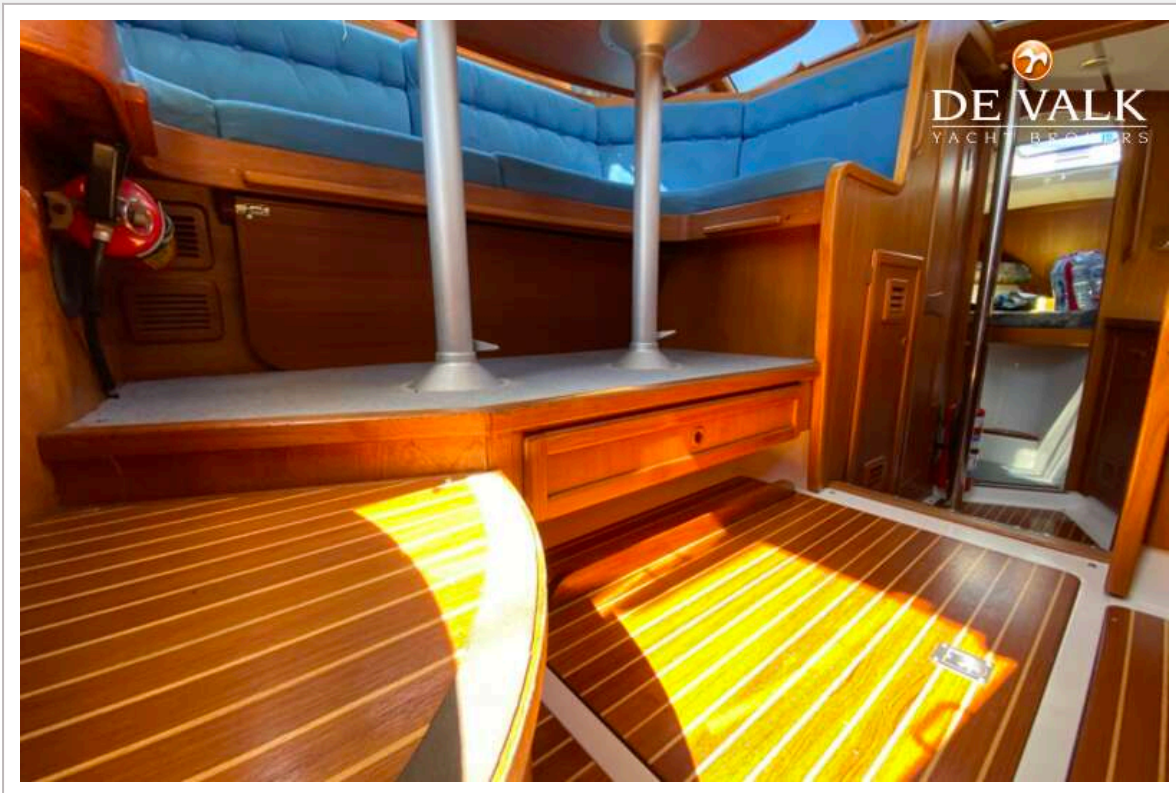
NAUTICAT 321



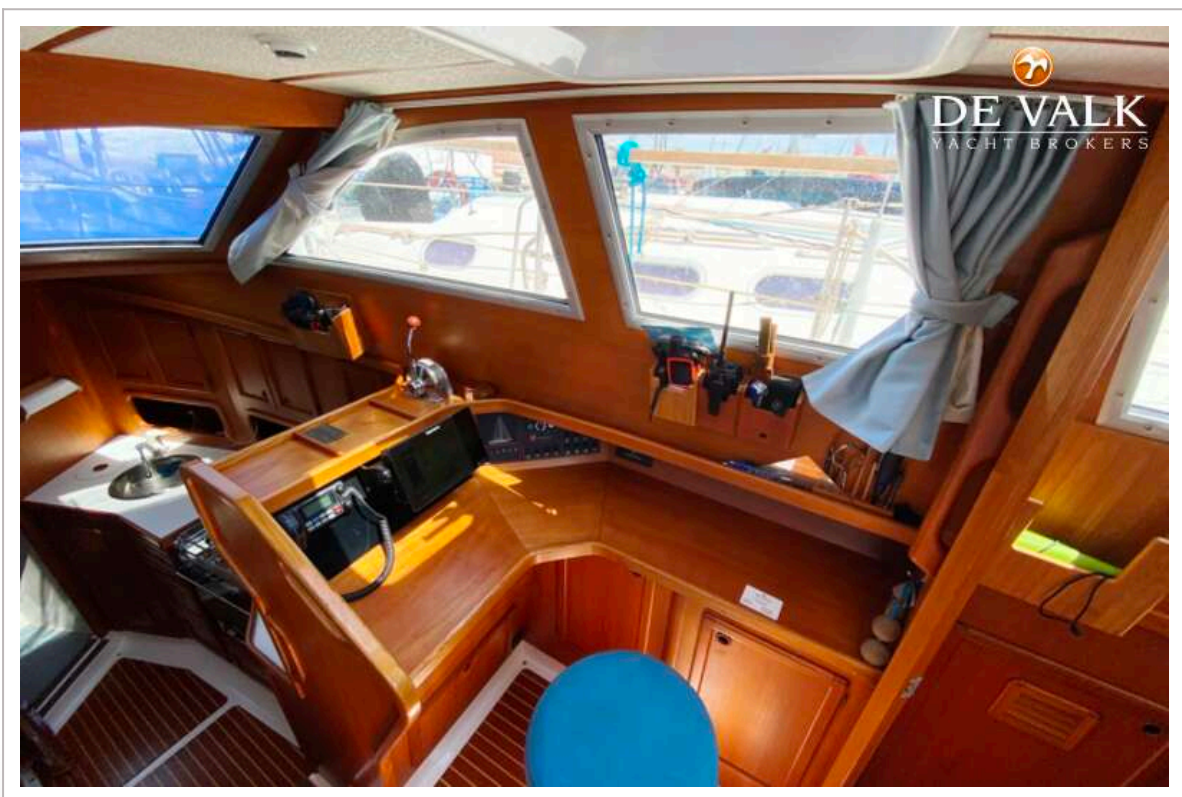
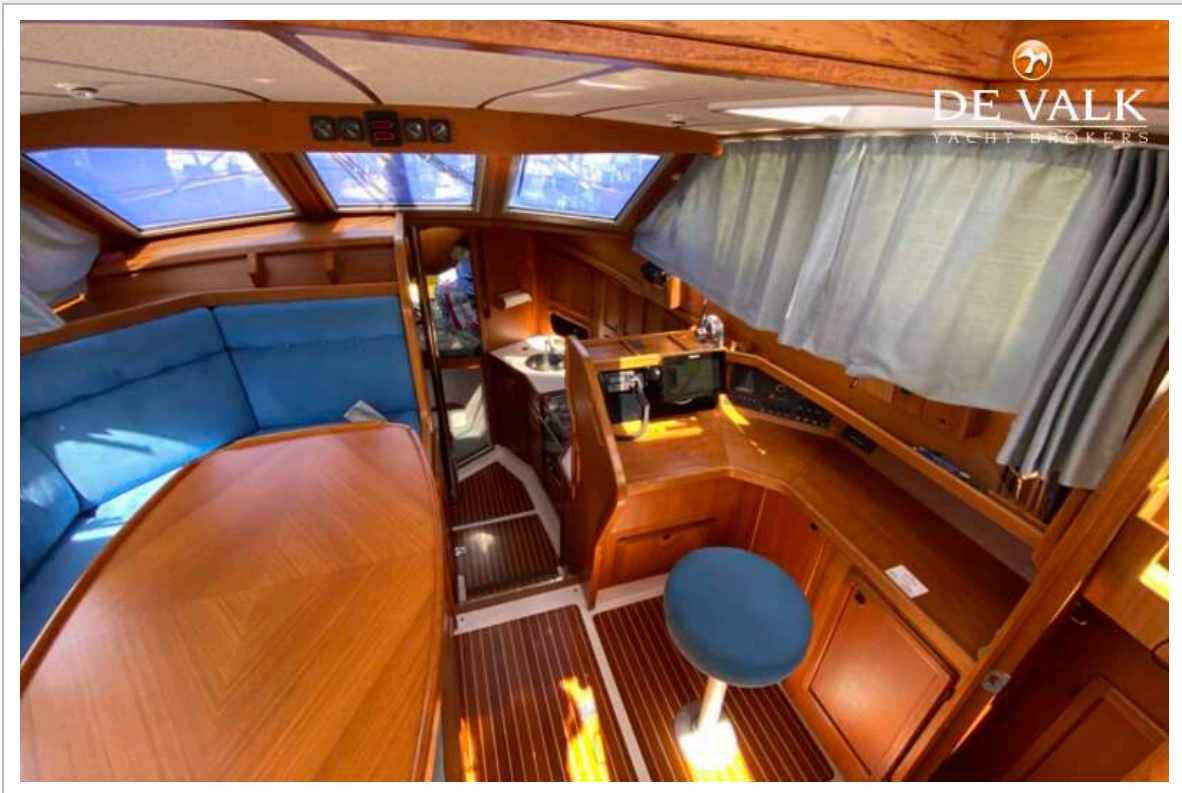
NAUTICAT 321



NAUTICAT 321



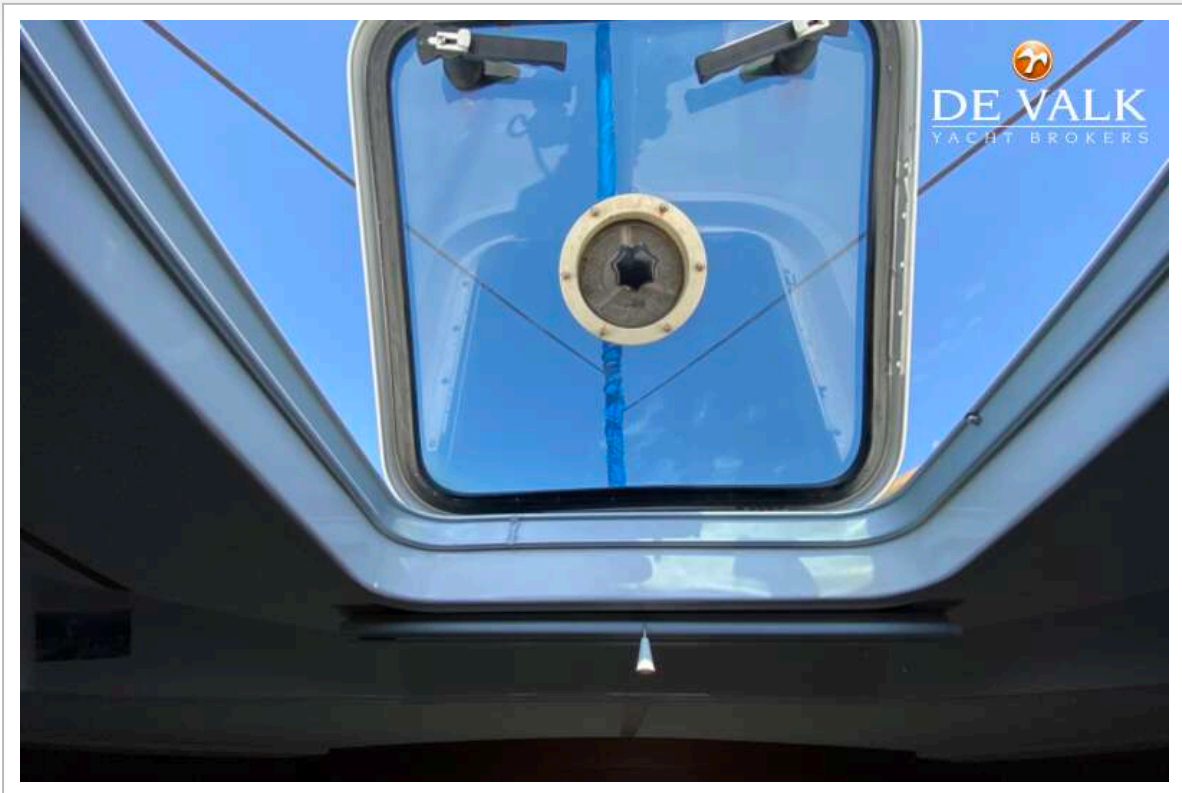
NAUTICAT 321



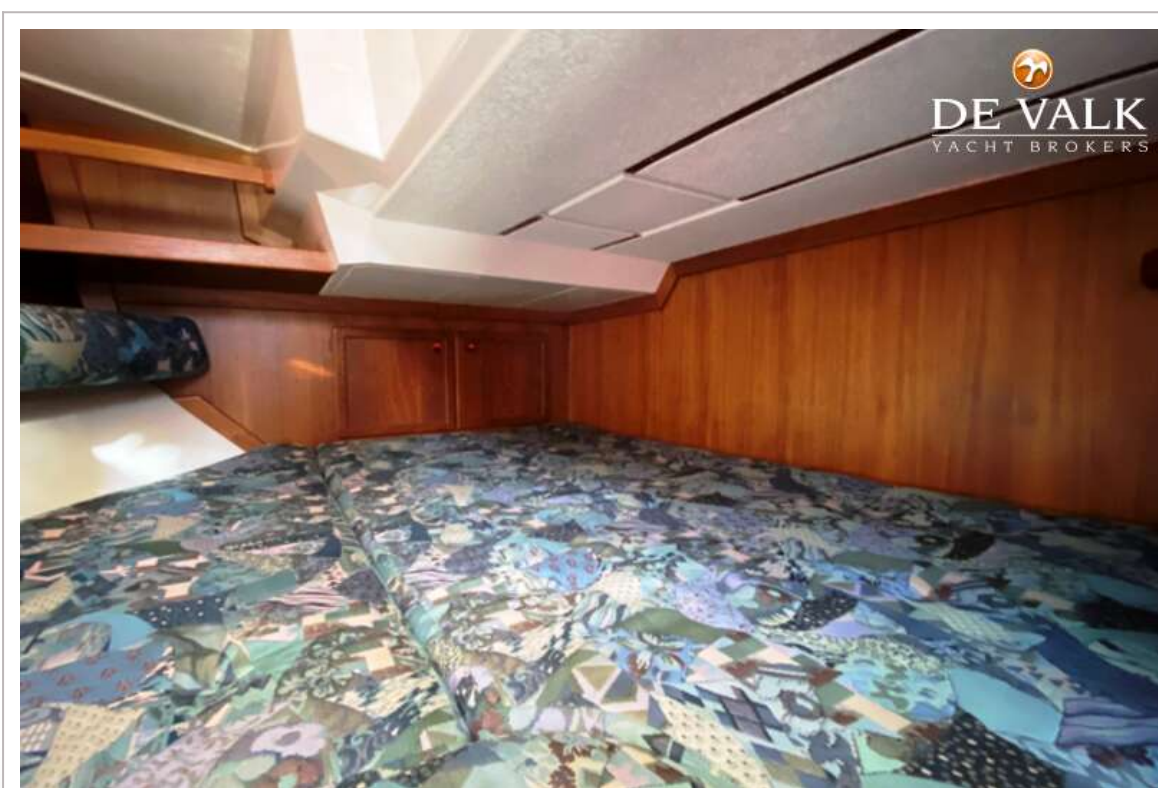
NAUTICAT 321

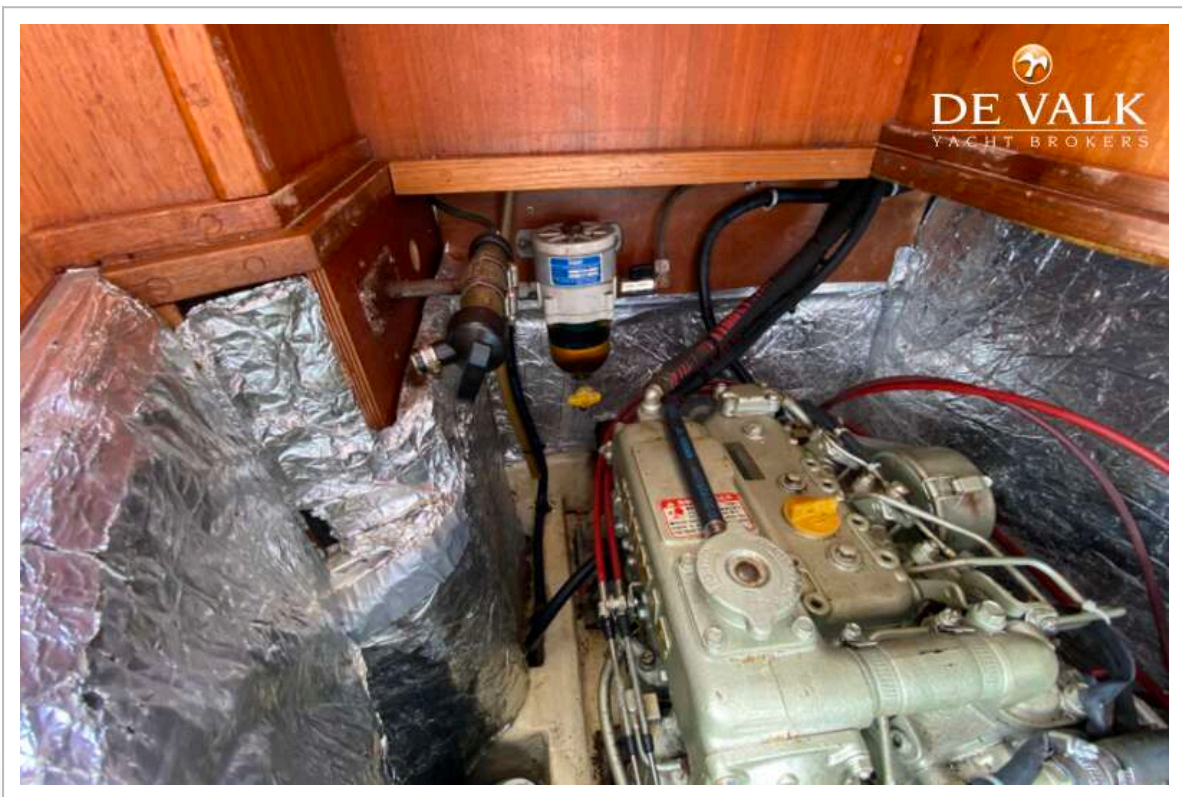
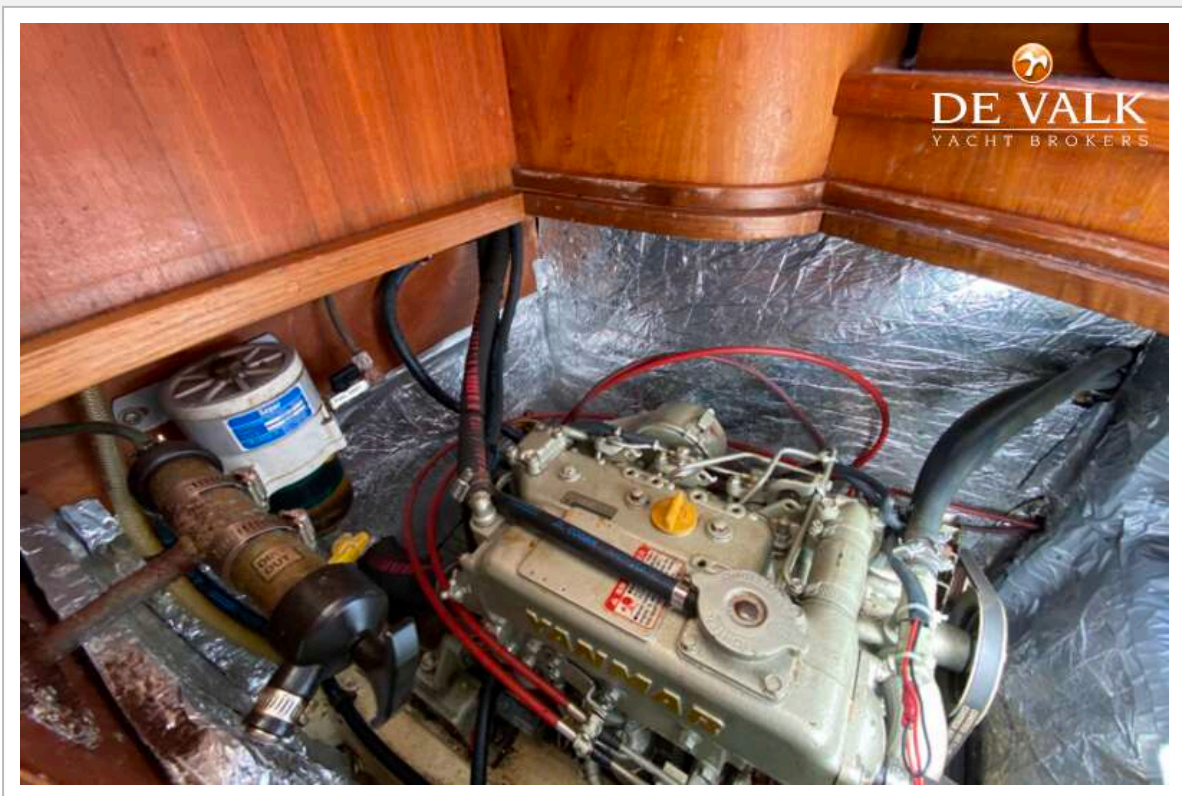






NAUTICAT 321





NAUTICAT 321

