



FAIRLINE TARGA 43

FAIRLINE TARGA 43

BROKER'S COMMENTS

The Targa 43 is one of the most popular express cruisers from Fairline. With her spacious interior sleeping 5, a sensible cockpit layout, twin economical diesel engines with shaft drives as well as a dinghy garage, she ticks all the boxes. This example from 1998 has just been polished and waxed and has had an interior valet as well. Useful options such as a bow and stern thruster, hot air heating, air conditioning and a generator make on board living that much more enjoyable. Come and see for yourself in Sint Annaland if this Targa is the one for you.

Marc Weijenberg

SPECIFICATIONS

Dimensions	13.75 x 3.80 x 1.00 (m)	Builder	Fairline Boats
Built	1998	Cabins	2
Material	GRP	Berths	5
Engine(s)	2 x Volvo Penta TAMD63P diesel	Hp/Kw	2 x 370.00 (hp), 271.95 (kw)
Asking price	sold (VAT)	Lying	at sales office

CONTACT

Sales office	De Valk Sint Annaland B.V.	Telephone	+31 (0)166 601 000
Address	Koelhuisweg 4 4697 RM Sint Annaland NL	E-mail	sintannaland@devalk.nl

DISCLAIMER

These particulars are given in good faith as supplied but cannot be guaranteed.



FAIRLINE TARGA 43

GENERAL

Model	FAIRLINE TARGA 43
Type	motor yacht
LOA (m)	13,75
LWL (m)	11,24
Beam (m)	3,80
Draft (m)	1,00
Air draft (m)	4,13
Headroom (m)	2,03
Year built	1998
Builder	Fairline Boats
Country	Great Britain
Designer	Bernard Olesinski / Fairline
Displacement (t)	10,75
CE norm	B
Hull material	GRP
Hull colour	blue
Hull shape	deep-V
Superstructure material	GRP
Superstructure (mm)	yes
Rubbing strake	stainless steel + rubber insert
Deck material	GRP
Deck finish	non-skid moulded in
Superstructure deck finish	non-skid moulded in
Cockpit deck finish	teak
Antifouling (year)	2016/2017
Window frame	GRP
Window material	tempered glass
Deckhatch	2 x
Portholes	stainless steel
Insulation	foam



Radar arch	non collapsible
Fuel tank (litre)	637
Fuel tank 2 (litre)	637
Level indicator (fuel tank)	yes
Freshwater tank (litre)	337
Level indicator (freshwater)	yes
Wheel steering	hydraulic
Outside helm position	hydraulic
Emergency tiller	yes
Extra info	Permateek on bathing platform 2015
Extra info	Venetian Blinds in saloon
Extra info	Ivory leather saloon upholstery

ACCOMMODATION

Cabins	2
Berths	5
Interior	cherry American Cherry gloss lacquer
Floor	carpet Natural Berber
Open cockpit	yes
Saloon	yes
Headroom saloon (m)	2,03
Heating	diesel ducted hot air Webasto (2015)
Air-conditioning	reverse cycle airco In saloon + fwd cabin
Chart table	yes
Aft Cabin	yes
Dinette to convert into berth	2,10 x 1,20 m
Sliding door to cockpit	with blind
Galley	yes
Countertop	plastic
Sink	stainless steel 2 x
Cooker	ceramic Bosch 2-burner



FAIRLINE TARGA 43

Extractor	12V fan
Microwave/oven combi	Domo (2016)
Fridge	yes
Hot water system	220V + engine Boilerelement not working
Water pressure system	electrical
Owners cabin	French bed
Bed length (m)	1,90 x 1,60
Wardrobe	hanging/drawers/shelves
Bathroom	en suite
Toilet	en suite
Toilet system	electric
Wash basin	in the bathroom
Shower	en suite
Extra info	headroom 1,89 m
Guest cabin 1	twin single
Bed length (m)	2,00 x 0,70 (2 x)
Wardrobe	hanging and shelves
Bathroom	separate
Toilet	separate
Toilet system	electric
Wash basin	in the bathroom
Shower	separate
Extra info	headroom 1,86 m
Wet bar	in cockpit
Extra info	quilted bedspreads
Extra info	heating outlet in cockpit

MACHINERY

No of engines	2
Make	Volvo Penta
Type	TAMD63P



FAIRLINE TARGA 43

HP	370,00
kW	271,95
Fuel	diesel
Year installed	1998
Maximum speed (kn)	28
Engine hours	1200
Engine cooling system	freshwater heat exchanger
Drive	shaft
Engine controls	bowden cable Morse Red Top
Gearbox	hydraulic
Bowthruster	SidePower SP95Ti
Sternthruster	SidePower SE100 (motor 2015 new)
Propeller type	fixed
Propeller blades	4
Propeller shaft material	stainless steel
Shaft lubrication	water
Manual bilge pump	yes
Electric bilge pump	3 x
Bilge alarm	yes
Electrical installation	12V / 220V
Generator	silent separator HFL H2W 8 MIC 8kVA
Running hours generator	292 (07/2018)
Batteries	3 x
Start battery	1 x
Service battery	2 x
Sternthruster battery	Optima
Battery charger	Jenelec JE/SM12-50
Diode battery combiners	yes
Shorepower	with cable
Trimtabs	hydraulic



NAVIGATION

Compass	Ritchie
Electric compass	In autopilot
Depth sounder/log	Raymarine Masterview
VHF	Raymarine Ray 240E
Autopilot	Raymarine ST6000+
Rudder angle indicator	yes
Radar	Garmin GMR-24
Plotter/GPS	Garmin GPSmap 5012
Navigation lights	yes

EQUIPMENT

Fixed windscreen	yes
Cockpit cover	blue
Cockpit cushions	white with blue piping
Cockpit table	GRP
Bathing platform	yes
Boarding ladder	stainless steel
Transom door	yes
Deck shower	hot + cold
Anchor	Delta
Anchor chain	54 m
Windlass	electrical Lewmar
Capstan	on windlass
Dinghy	inflatable Zodiac
Outboard	Mercury 4,5hp
Sea railing	stainless steel
Grab rail (superstructure)	stainless steel
Pulpit	yes
Wiper	2 x
Horn	electric



FAIRLINE TARGA 43

Radar reflector	yes
Fenders	yes
Mooring lines	yes
TV	Akai 80 cm (2015)
TV receiver	DVB-T in TV
Radio-cd player	Fusion MS-RA205 (2015)
Cockpit speakers	2 x
Speakers in salon	2 x
Fire extinguisher	yes
Extinguisher in engine room	yes
Auto extinguisher system	yes
Extra info	carbonlook dashpanels 2015
Extra info	coachroof cushions
Extra info	tonneau cover



FAIRLINE TARGA 43



FAIRLINE TARGA 43



FAIRLINE TARGA 43



FAIRLINE TARGA 43



FAIRLINE TARGA 43



FAIRLINE TARGA 43



FAIRLINE TARGA 43



FAIRLINE TARGA 43



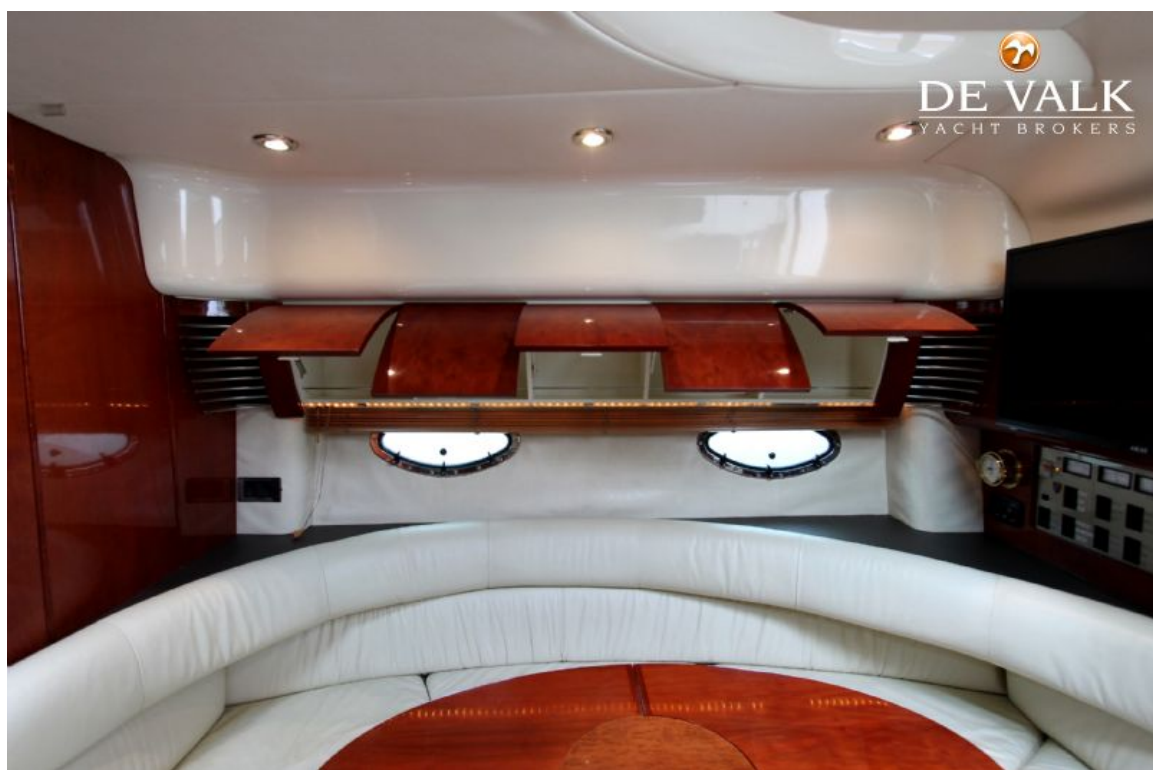
FAIRLINE TARGA 43



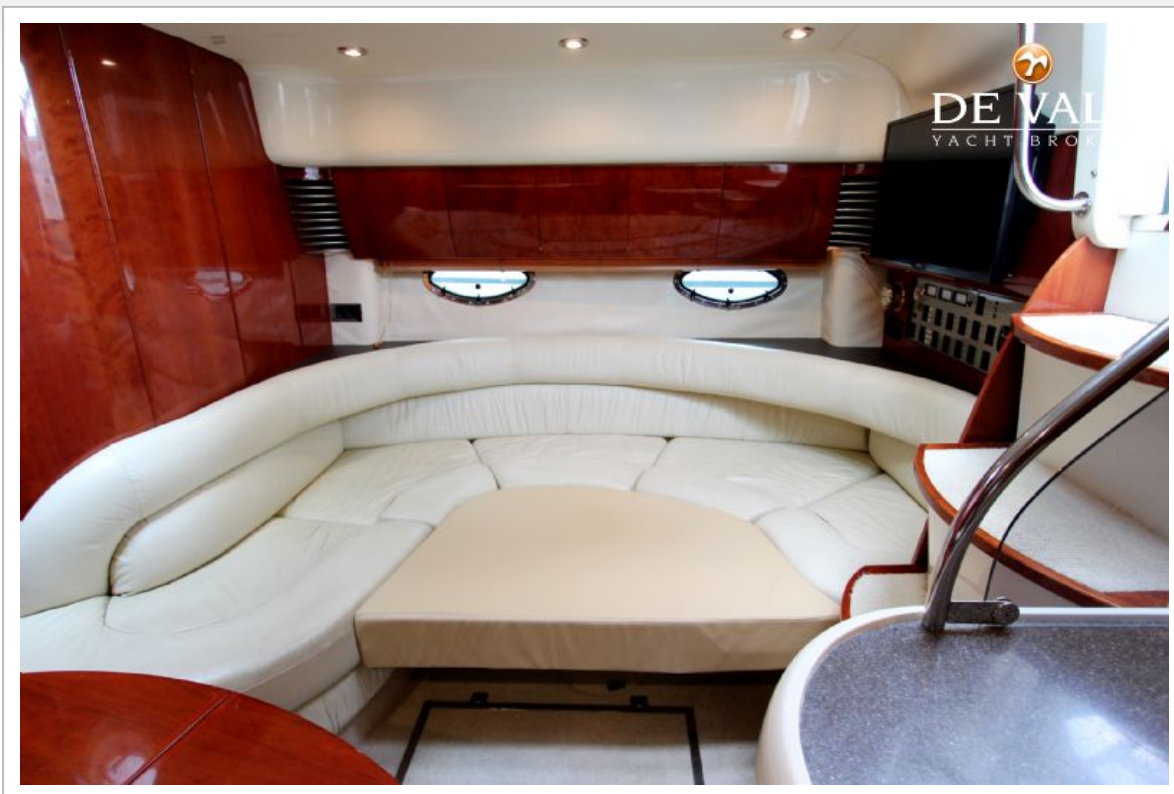
FAIRLINE TARGA 43



FAIRLINE TARGA 43



FAIRLINE TARGA 43



FAIRLINE TARGA 43



FAIRLINE TARGA 43



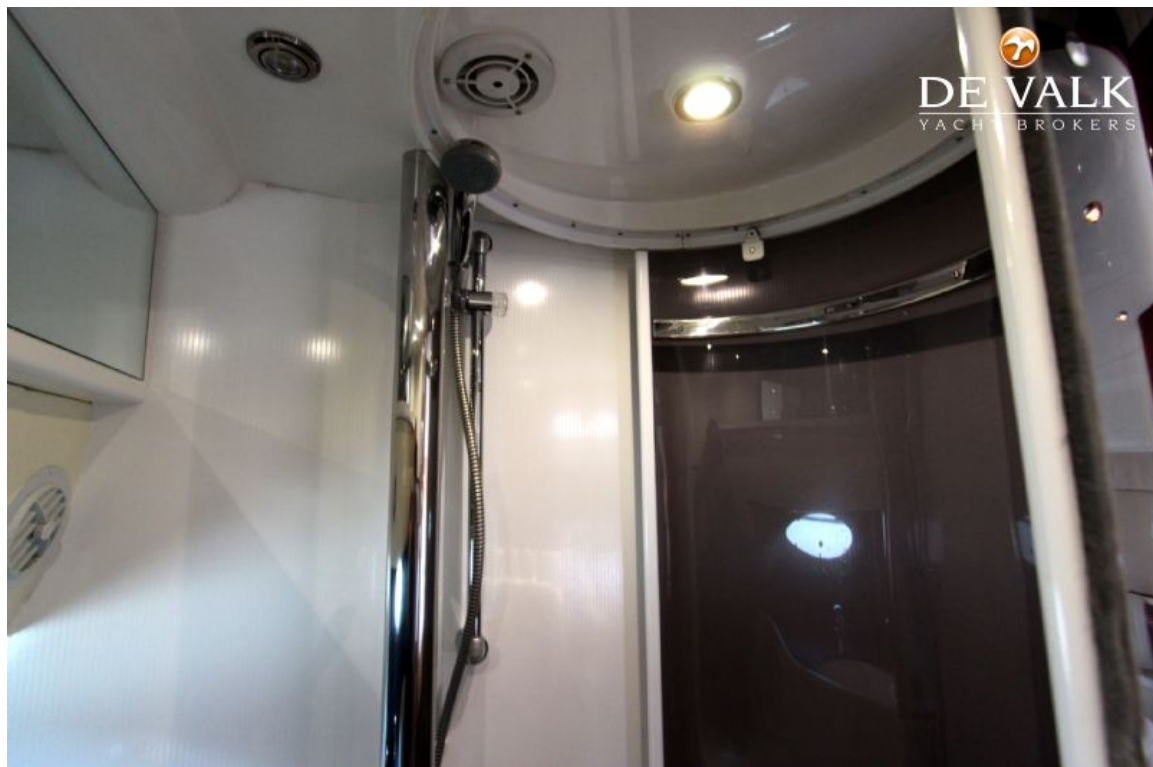
FAIRLINE TARGA 43



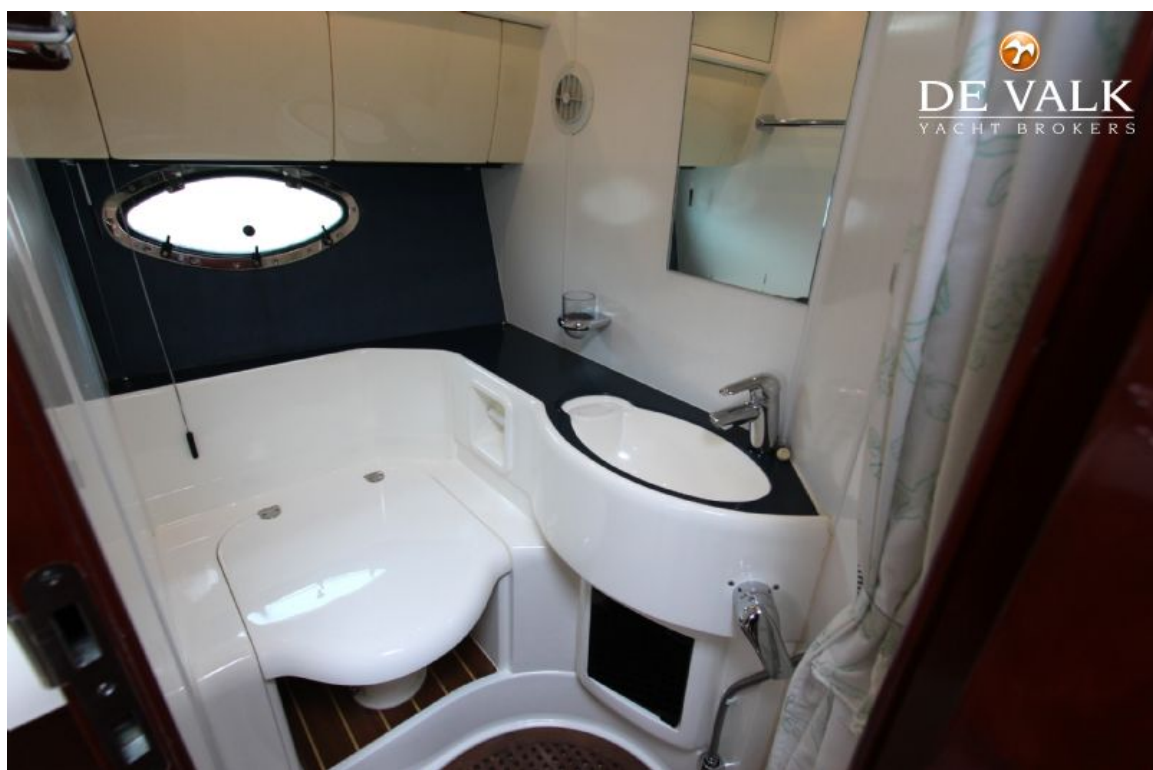
FAIRLINE TARGA 43



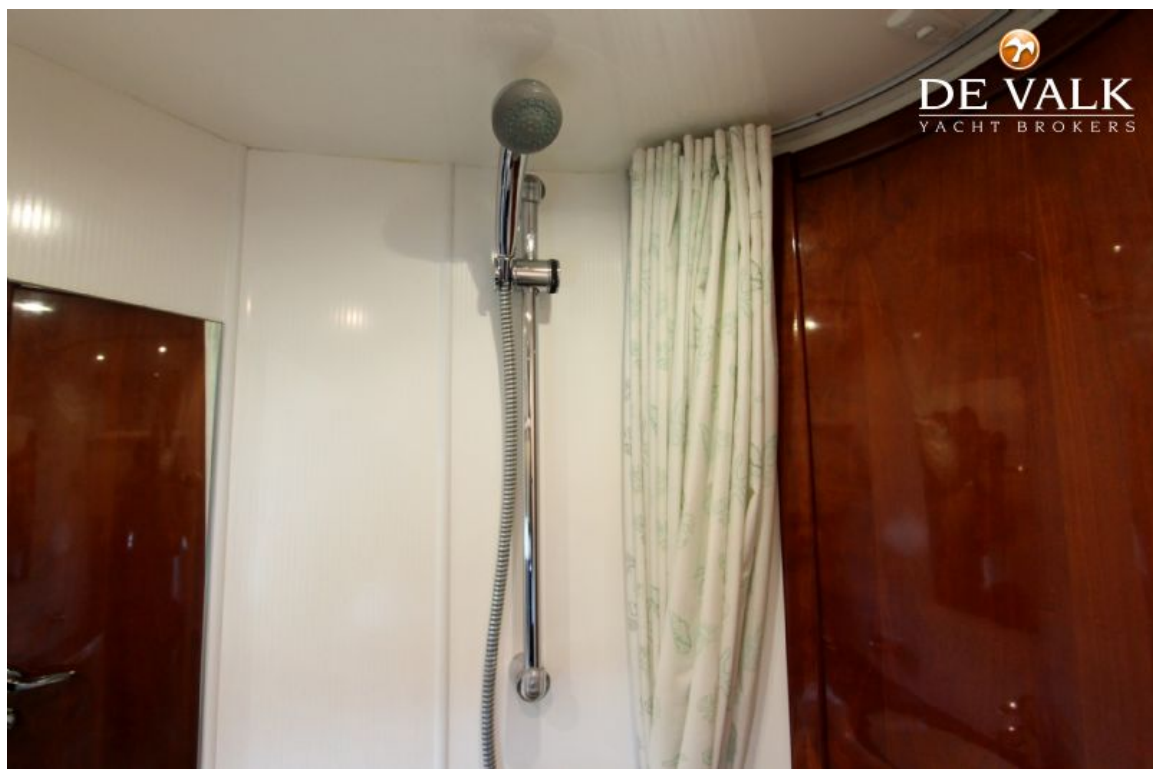
FAIRLINE TARGA 43



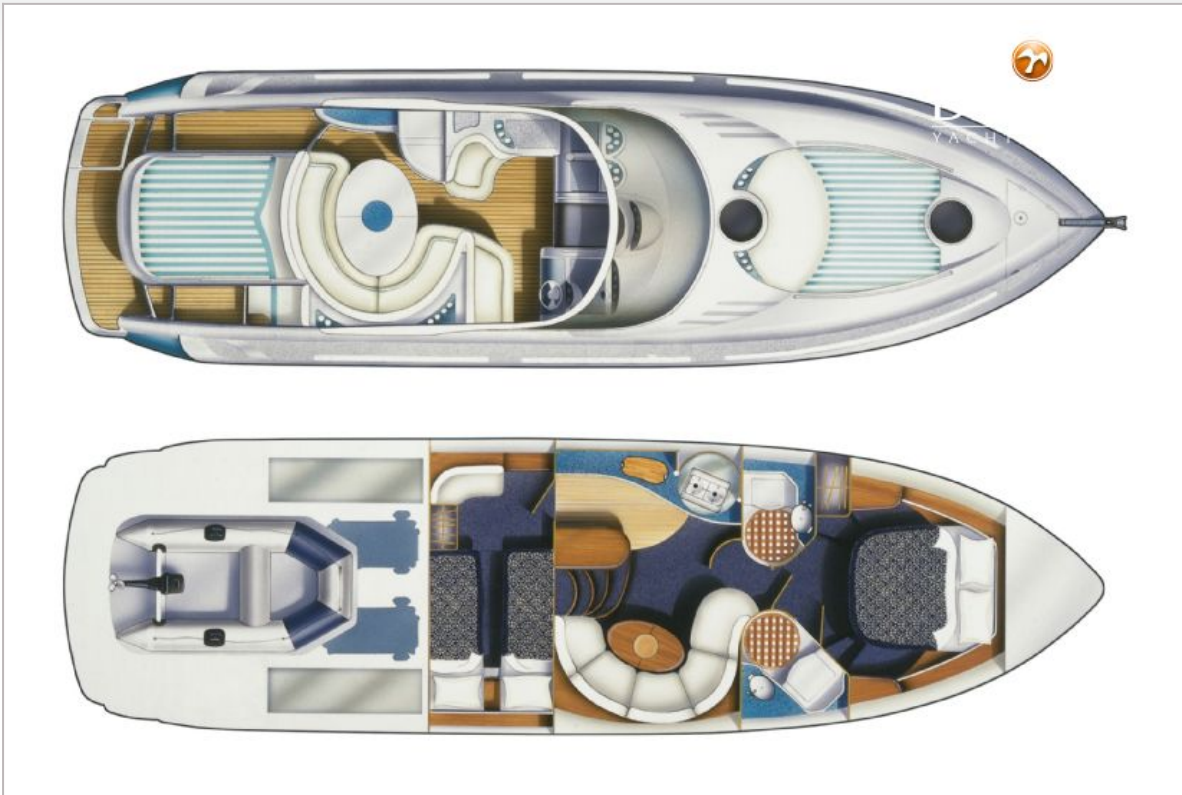
FAIRLINE TARGA 43



FAIRLINE TARGA 43



FAIRLINE TARGA 43



FAIRLINE TARGA 43

