



DE VALK
YACHT BROKERS



MAX OERTZ BERMUDAN CUTTER 44 FT



DE VALK
YACHT BROKERS

MAX OERTZ BERMUDAN CUTTER 44 FT

BROKER'S COMMENTS

This historic Max Oertz 44 ft Bermudan Cutter is a classic wooden yacht designed by Max Oertz and built in 1925. She combines elegant lines with proven offshore sailing performance and a strong regatta history, including multiple race victories. Carefully maintained throughout her life, she has benefited from continuous investment and a major refits, ensuring she remains in excellent condition. A rare opportunity to acquire a true classic sailing yacht with pedigree, history, and proven performance, suitable for regattas or cruising.

Joris van de Rijt

SPECIFICATIONS

Dimensions	13.42 x 3.23 x 2.07 (m)	Builder	Hans Heidtmann
Built	1925	Cabins	2
Material	Wood	Berths	6
Engine(s)	1 x Lombardini diesel	Hp/Kw	60.00 (hp), 44.16 (kw)
Asking price	€ 147.000 (VAT Exempt)	Lying	at sales office

CONTACT

Sales office	De Valk Sint Annaland B.V.	Telephone	+31 166 601 000
Address	Koelhuisweg 4 4697 RM Sint Annaland NL	E-mail	sintannaland@devalk.nl

DISCLAIMER

These particulars are given in good faith as supplied but cannot be guaranteed.



MAX OERTZ BERMUDAN CUTTER 44 FT

GENERAL

Model	MAX OERTZ BERMUDAN CUTTER 44 FT
Type	sailing yacht
LOA (m)	13,42
LWL (m)	11,92
Beam (m)	3,23
Draft (m)	2,07
Year built	1925
Builder	Hans Heidtmann
Country	Germany
Designer	Max Oertz
Displacement (t)	15
Ballast (tonnes)	lead 6,3 (new 2013)
Hull material	wood
Hull colour	white
Hull shape	full bilged Pitch pine wih oak frames
Keel type	long keel New lead keel + bolts 2013
Superstructure material	wood
Deck material	wood
Deck finish	teak New 2019
Cockpit deck finish	teak New 2019 + New aft cockpit coaming
Dorades	4 x (2 are placed in 2011)
Deckhatch	yes
Portholes	2 x (2008)
Fuel tank (litre)	stainless steel 100 (overhauled 2007)
Level indicator (fuel tank)	New 2020
Freshwater tank (litre)	stainless steel 180
Level indicator (freshwater)	New 2017
Greywater tank (litre)	50 (flexible)
Wheel steering	cable steering New cables 2020
Emergency tiller	yes



MAX OERTZ BERMUDAN CUTTER 44 FT

More info on hull	New planks under waterlineport side (2018)
Extra info	Wood around lead keelconstruction renewed (2013)
Extra info	Full history, refits, regatta results available upon request

ACCOMMODATION

Cabins	2
Berths	6
Floor	teak A-grade Java teak glued to plywood in all cabins + saloon (2014)
Heating	diesel ducted hot air (not installed)
Heating 2	Dickenson Newport solid fuel stove
Navigation center	LED (2018)
Chart table	yes
Aft Cabin	yes
Dinette	yes
Galley	New teak veneers and cabinetry (2009)
Countertop	wood
Sink	stainless steel + taps (2009)
Cooker	Eno 2 burner (2009)
Oven	yes
Fridge	Wemo 40 L toploader (2009)
Hot water system	by engine
Water pressure system	electrical New 2020
Manual and/or foot pump	yes
Owners cabin	double bed
Wardrobe	shelves
Bathroom	shared
Toilet	shared
Toilet system	manual
Wash basin	in the bathroom
Shower	shared



MAX OERTZ BERMUDAN CUTTER 44 FT

Guest cabin 1	bunk bed (near ownerscabin in the front) with new upholstery 2012
Guest cabin 2	double bed Starboard aft
Wardrobe	hanging and shelves (new lockers 2020)
Extra info	New saloon upholstery 2021
Extra info	All interior lights LED

MACHINERY

No of engines	1
Make	Lombardini
HP	60
kW	44.16
Fuel	diesel
Year installed	2007
Engine cooling system	freshwater heat exchanger
Drive	shaft
Engine controls	bowden cable
Gearbox	mechanical
Exhaust	watercooled
Propeller type	fixed
Propeller blades	3
Propeller shaft material	stainless steel
Electric bilge pump	Johnson (2018)
Electrical installation	12 V / 220V
Start battery	1 x
Service battery	2 x
Battery monitor	yes
Battery charger	Mastervolt
Inverter	Victron
Shorepower	with cable
Extra info	New Philippi AC Switchboard 2014



MAX OERTZ BERMUDAN CUTTER 44 FT

NAVIGATION

Compass	Sestrel Moore on helm (restored 2013)
Depth sounder	Raymarine ST 50
Log	Raymarine ST 50
Windset	Raymarine ST 50
Repeater	Raymarine ST 50
VHF	Icom
VHF handheld	Raymarine
Autopilot	Raymarine ST 60
GPS	Furuno
Personal computer	New 2014 with navigation software
AIS transponder	Raymarine 700 (2019)
Navigation lights	LED (2018)

EQUIPMENT

Sprayhood	New 2014
Anchor	CQR Plough
Anchor chain	yes
Windlass	electrical Simpson-Lawrence Seawolf 520
Sea railing	wire
Grab rail (superstructure)	teak
Railing side opening gates	2 x
Pushpit	yes
Pulpit	yes
Life raft	container Safeguard (2017)
Lifebuoy	yes
Fenders	yes
Mooring lines	yes
Radio	Fusion (2019)
Speakers in salon	Fusion
Clock - barometer	yes



RIGGING

Rigging	sloop Designed by Laurent Giles (1950)
Standing rigging	wire
Material mast	wood Hollow spruce
Spreaders	2 sets
Mainsail	Hagoort (2015)
Mainsail cover	(2015)
Battcars	New Harken mast track and cars (2017)
Fully battened mainsail	yes
Genoa	Hagoort (2015)
Genoa furler	yes
A-symmetric spi	2 in total, one of which was renewed in 2013
Staysail	Hagoort Boomed staysail (2015)
Reefing System	yes
Backstay adjuster	mechanical
Boomvang	tackle
Genoa sheetwinches	2 x Andersen ST (2011)
Halyard winches	2 x Andersen ST (2011)
Spinnaker winch	2 x Andersen ST (2011)
Multifunctional winches	3 x on mast
Spi-pole	aluminium
Extra info	New Lazy jacks 2019
Extra info	New mainsail sheet + blocks 2015



MAX OERTZ BERMUDAN CUTTER 44 FT



MAX OERTZ BERMUDAN CUTTER 44 FT



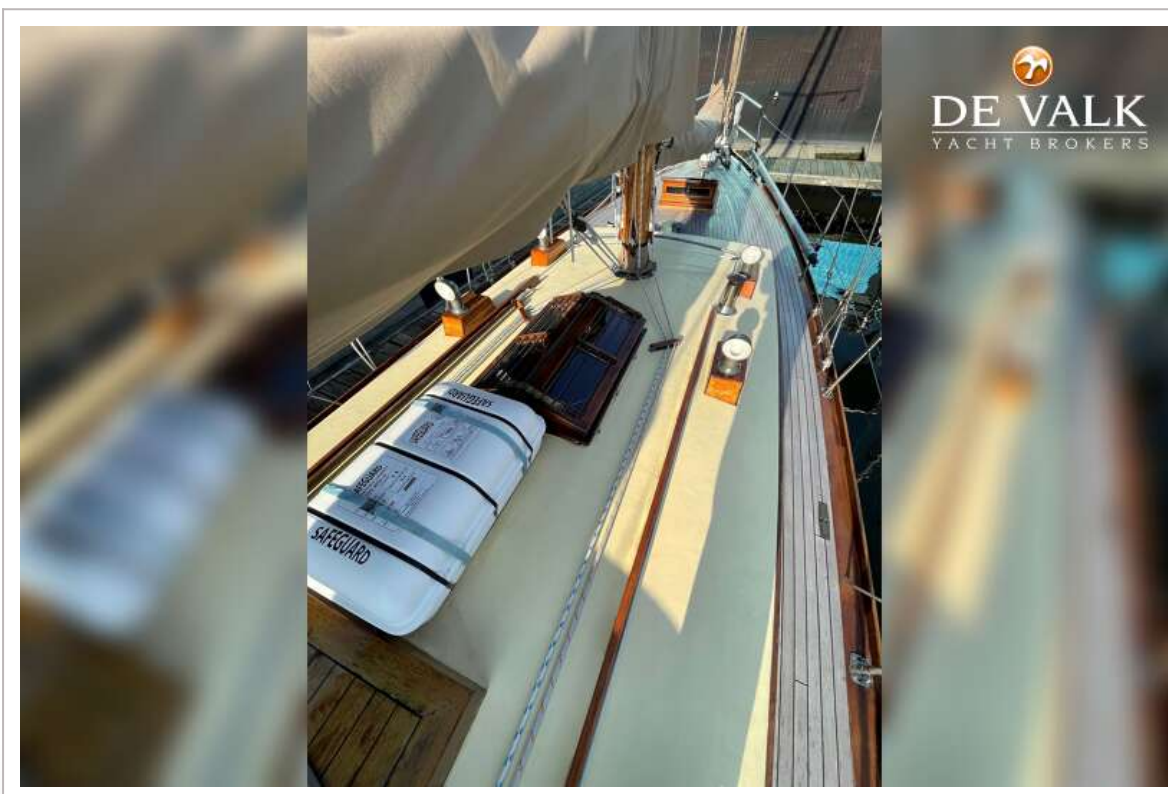
MAX OERTZ BERMUDAN CUTTER 44 FT



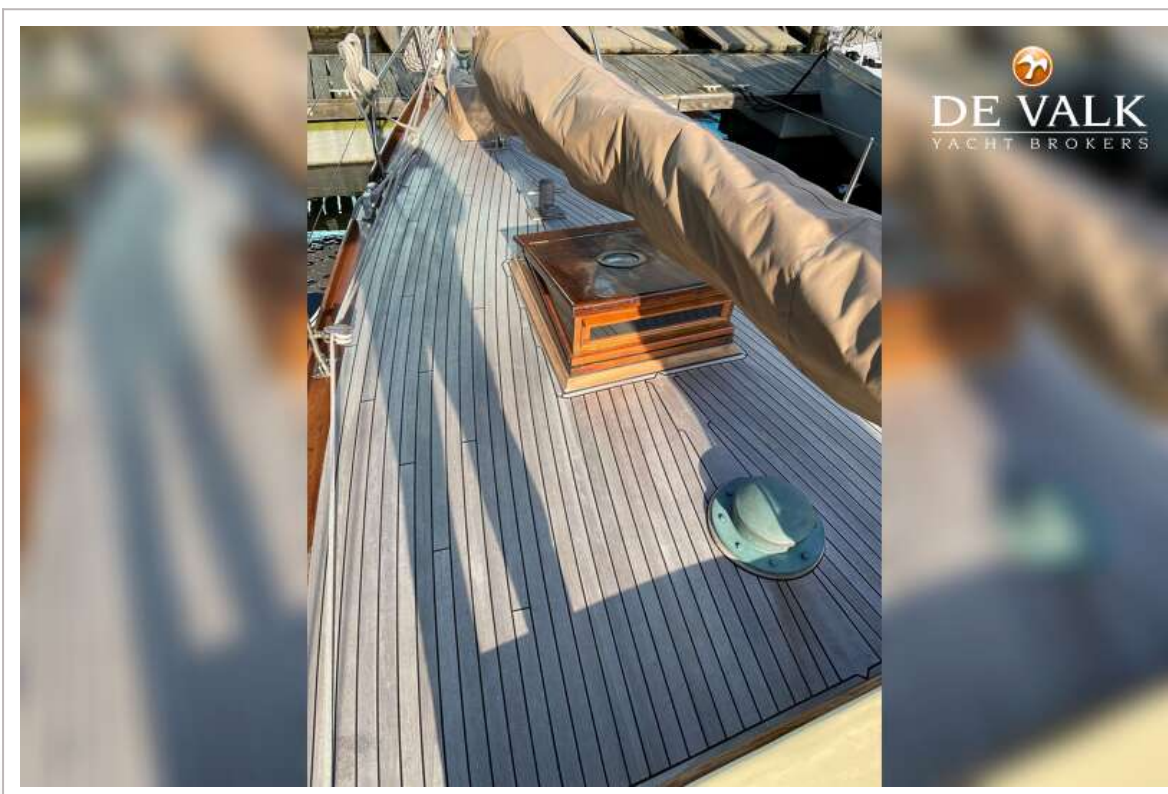
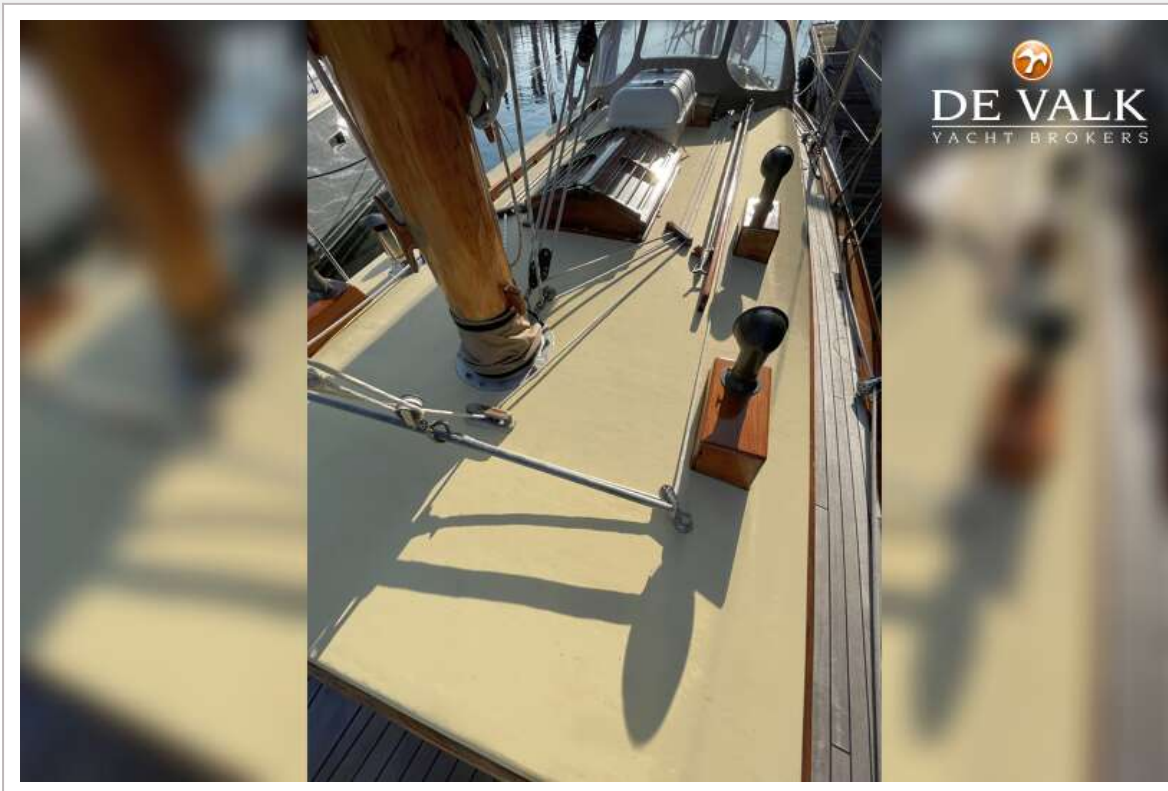
MAX OERTZ BERMUDAN CUTTER 44 FT



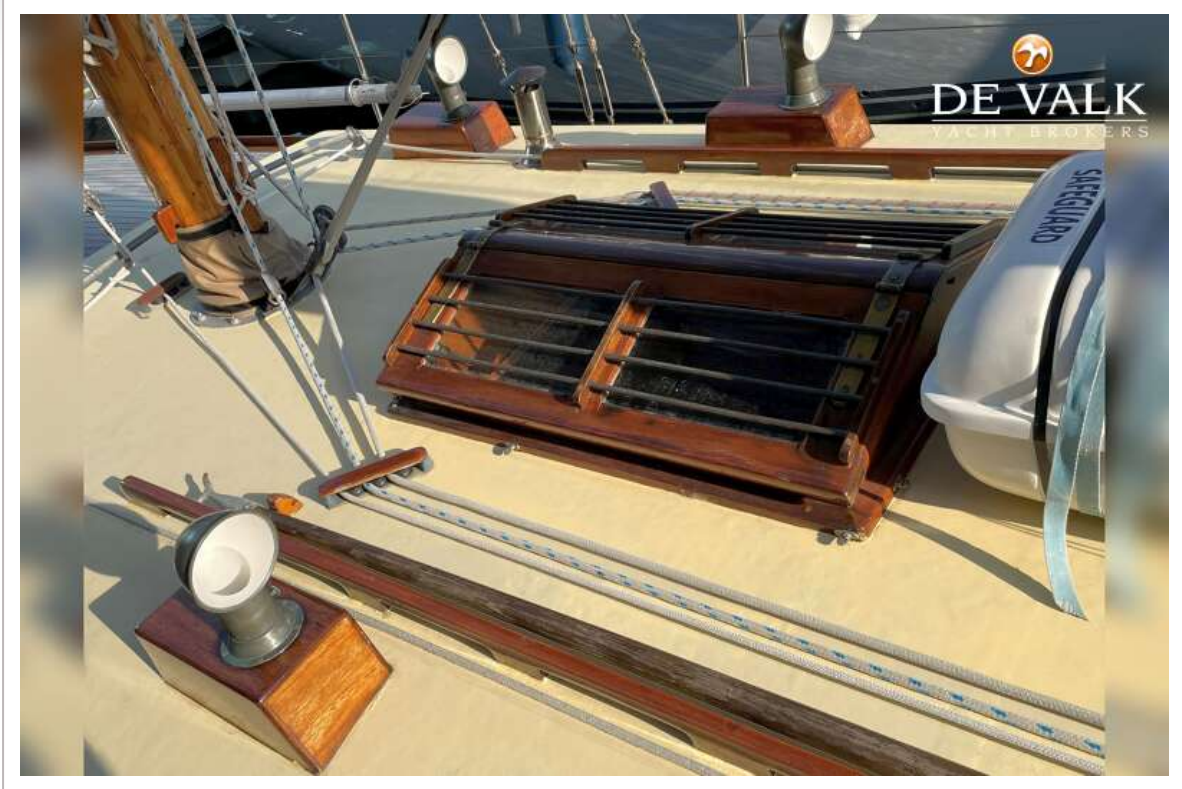
MAX OERTZ BERMUDAN CUTTER 44 FT



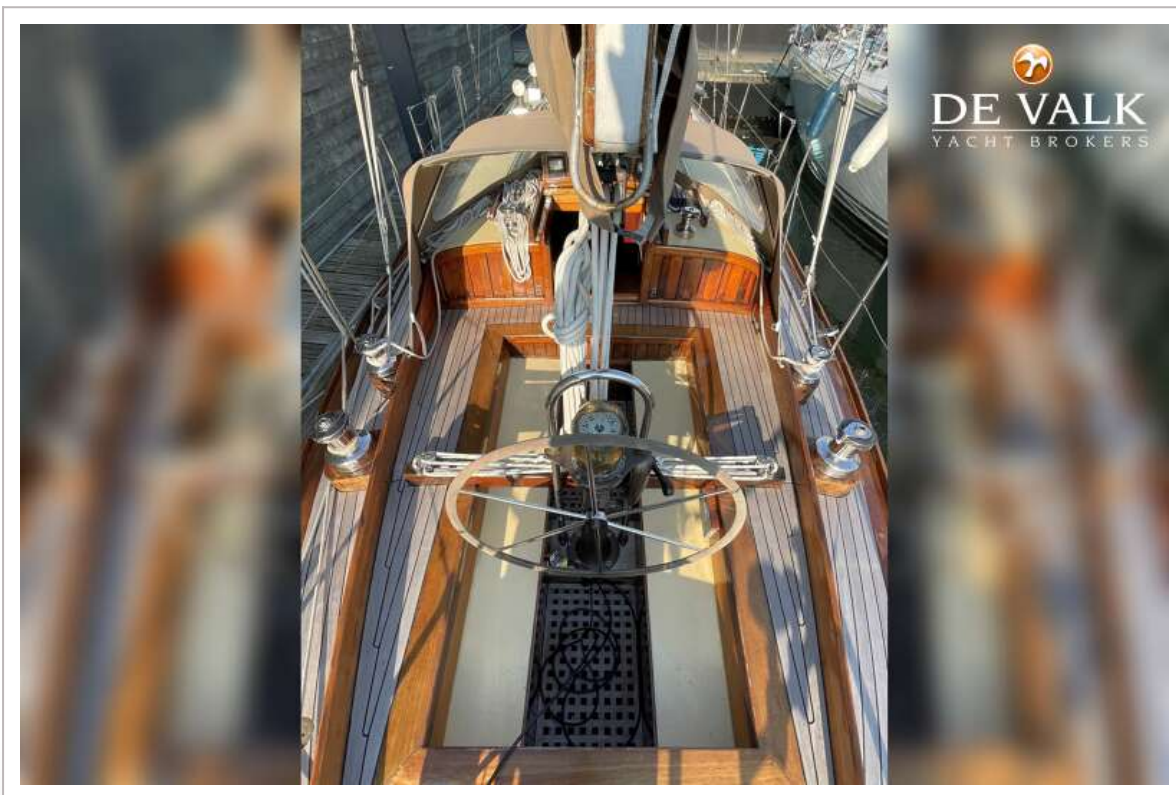
MAX OERTZ BERMUDAN CUTTER 44 FT



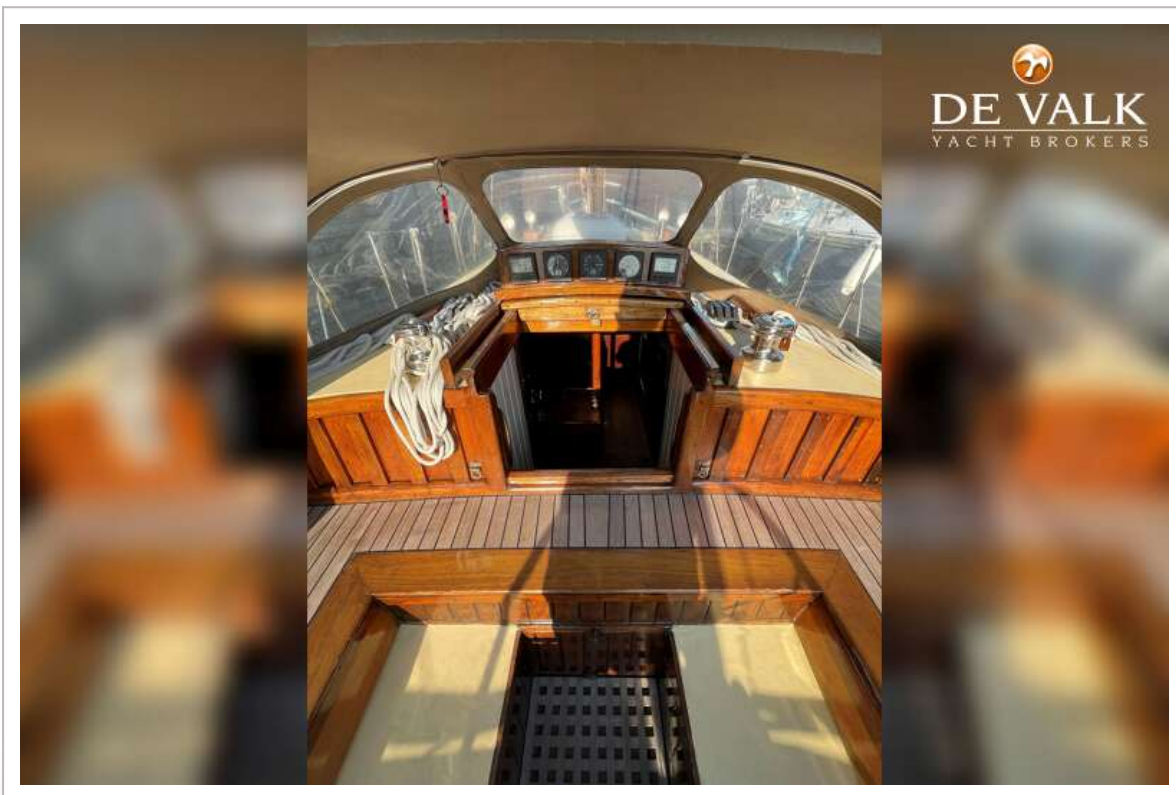
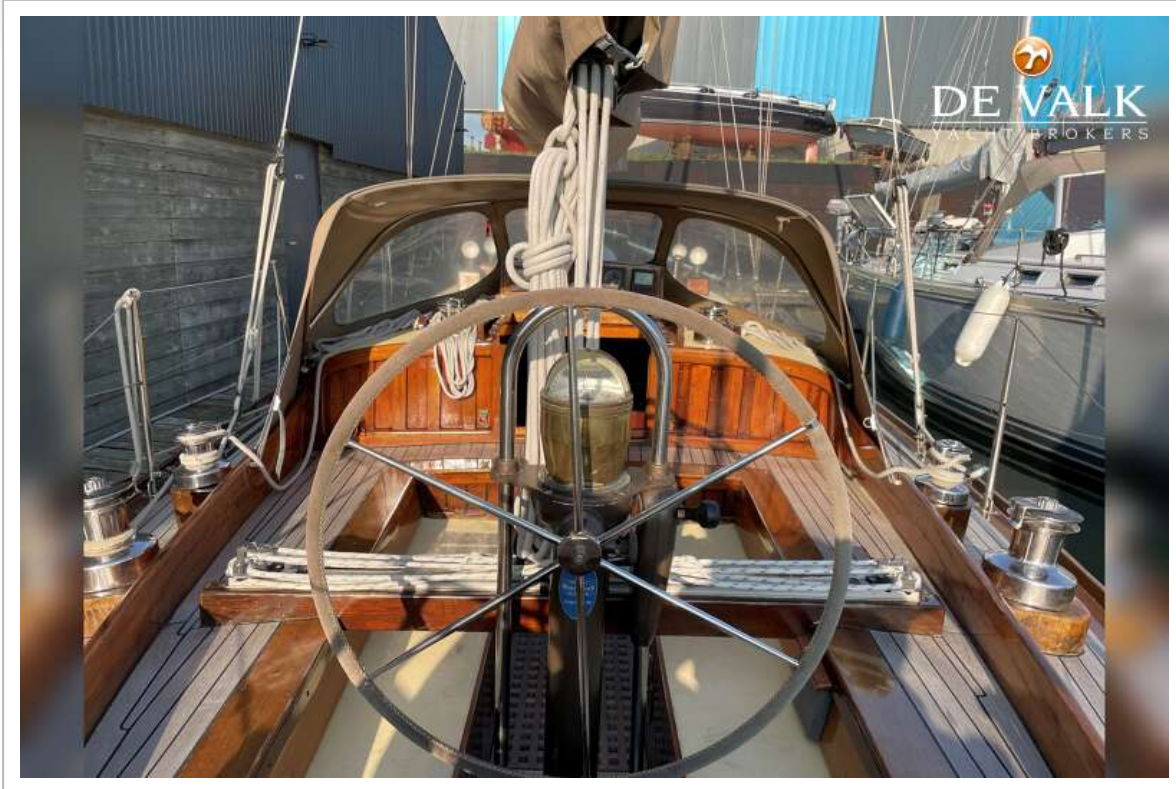
MAX OERTZ BERMUDAN CUTTER 44 FT



MAX OERTZ BERMUDAN CUTTER 44 FT



MAX OERTZ BERMUDAN CUTTER 44 FT





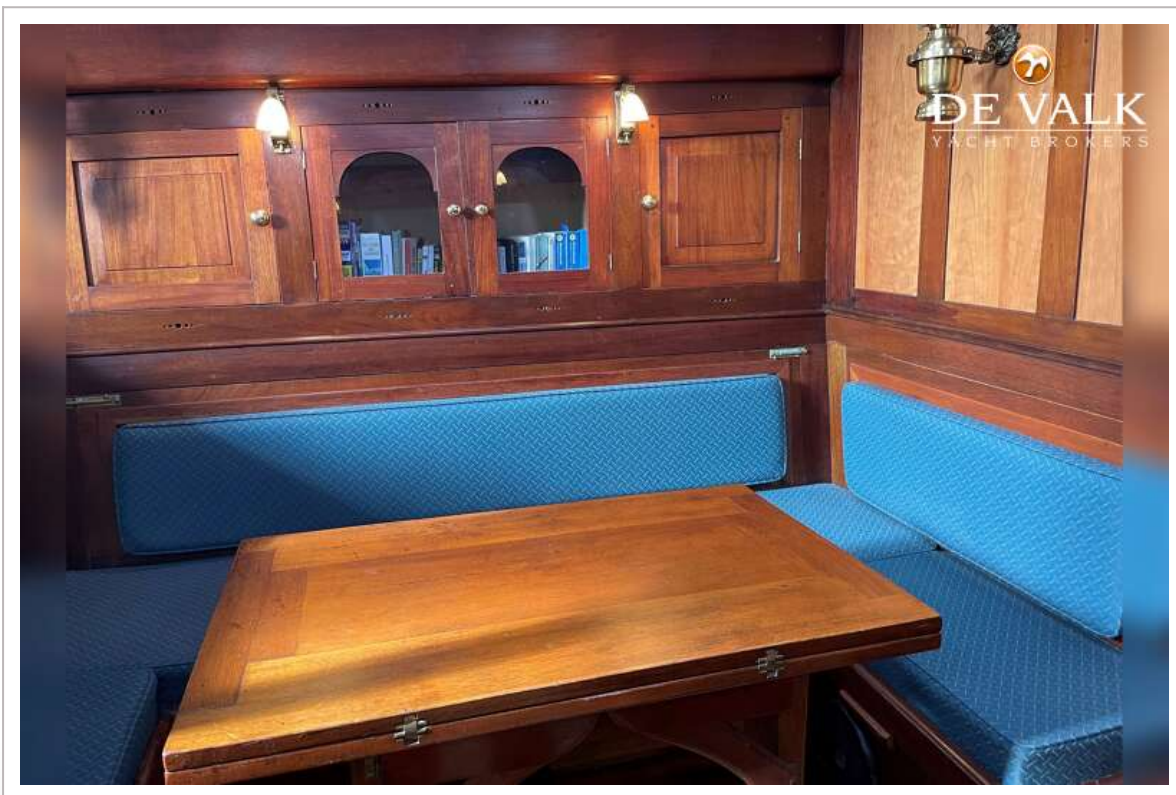
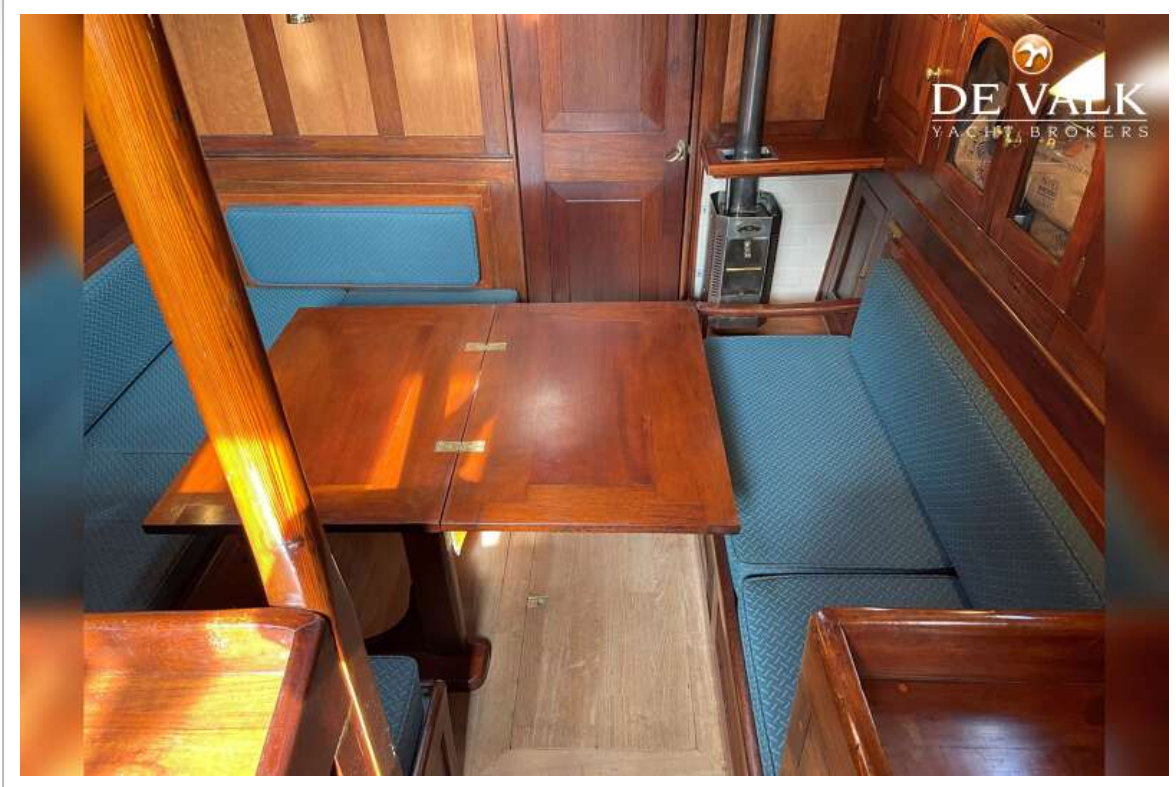
DE VALK

YACHT BROKERS

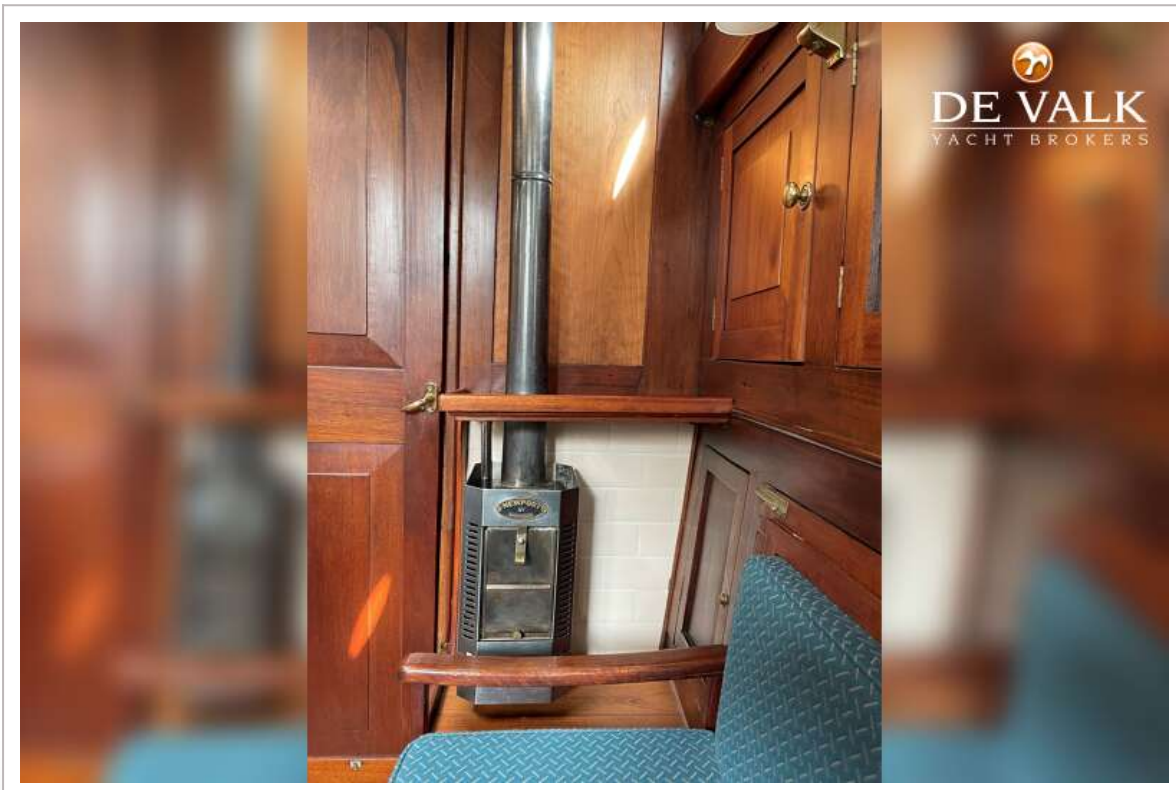
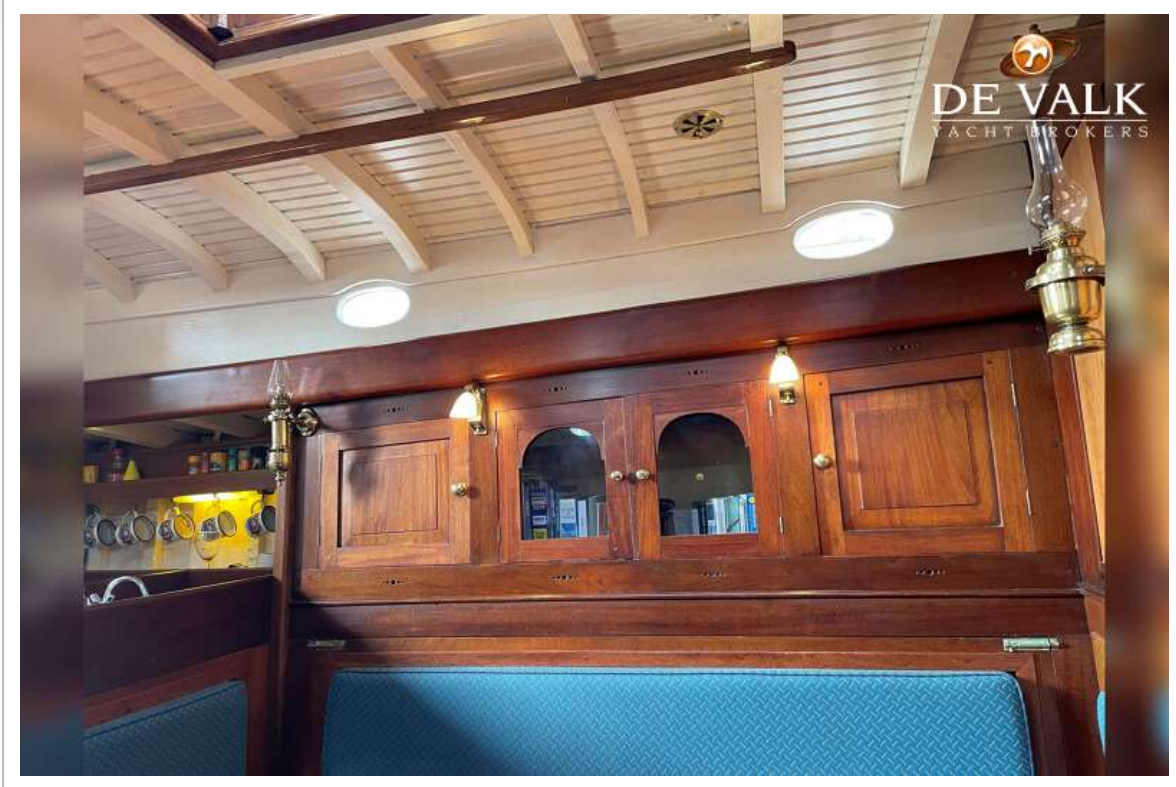
More pictures following soon



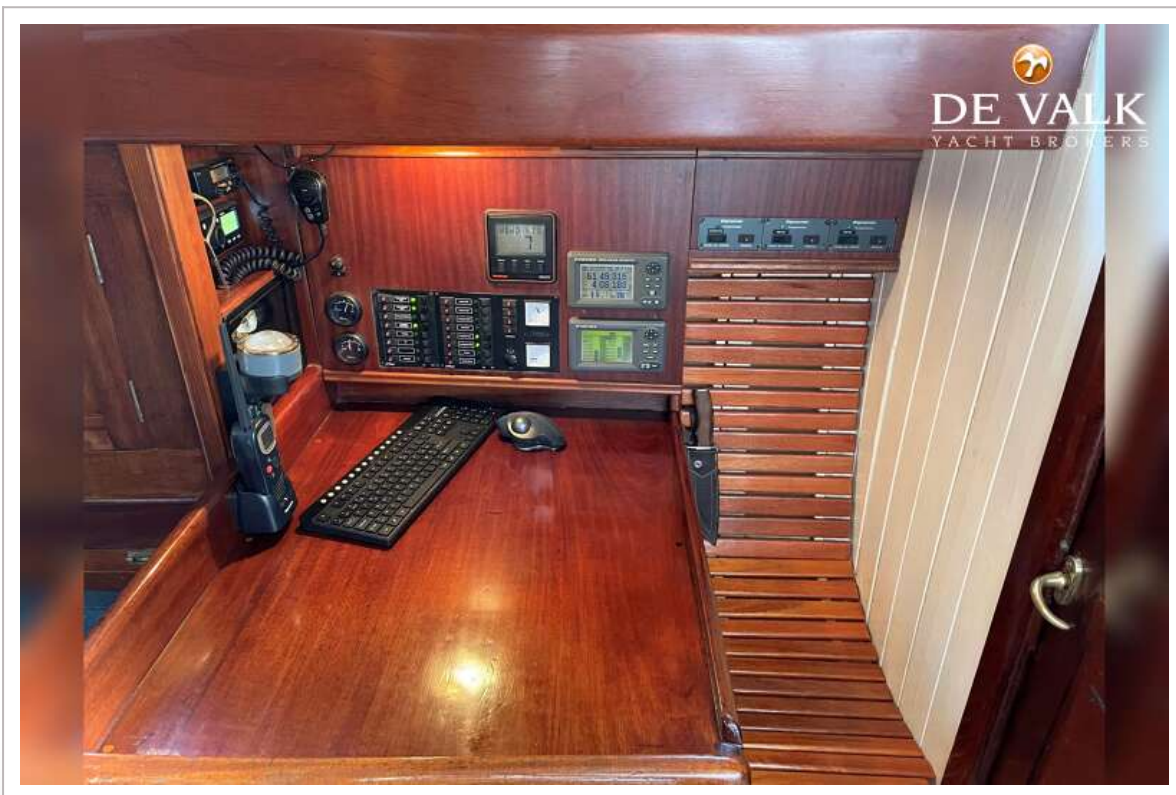
MAX OERTZ BERMUDAN CUTTER 44 FT



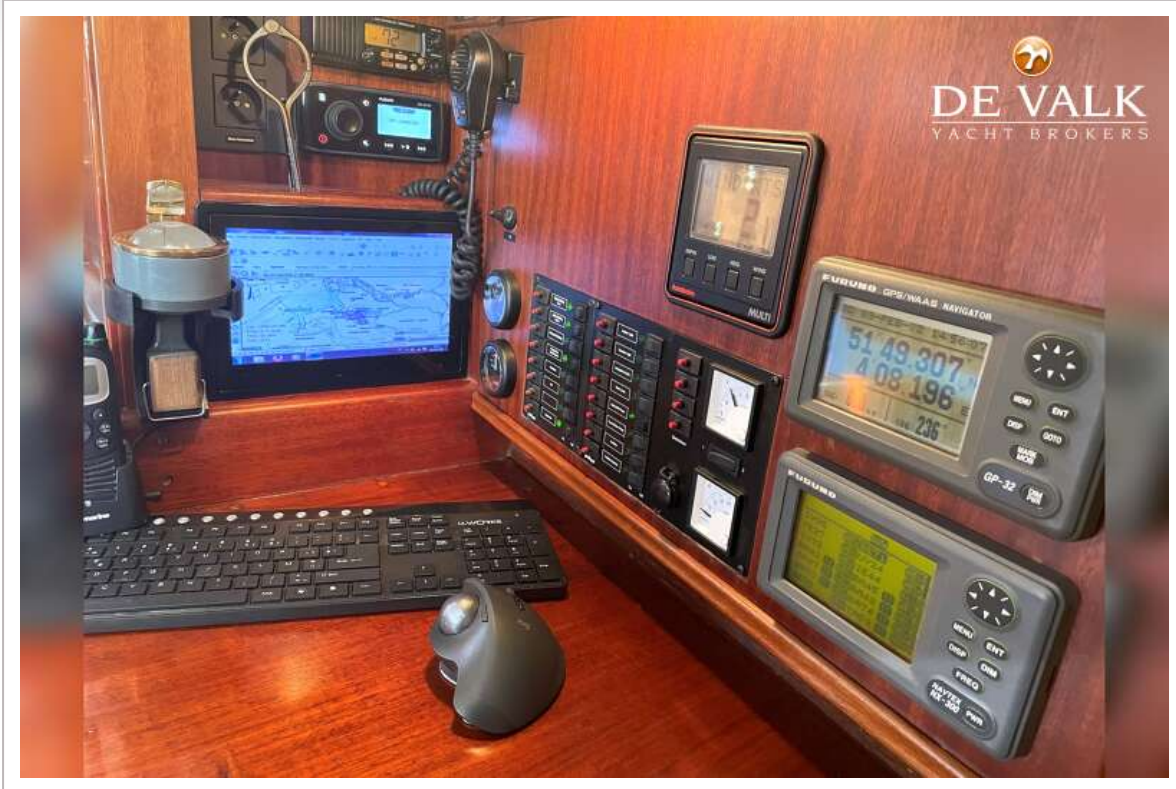
MAX OERTZ BERMUDAN CUTTER 44 FT



MAX OERTZ BERMUDAN CUTTER 44 FT



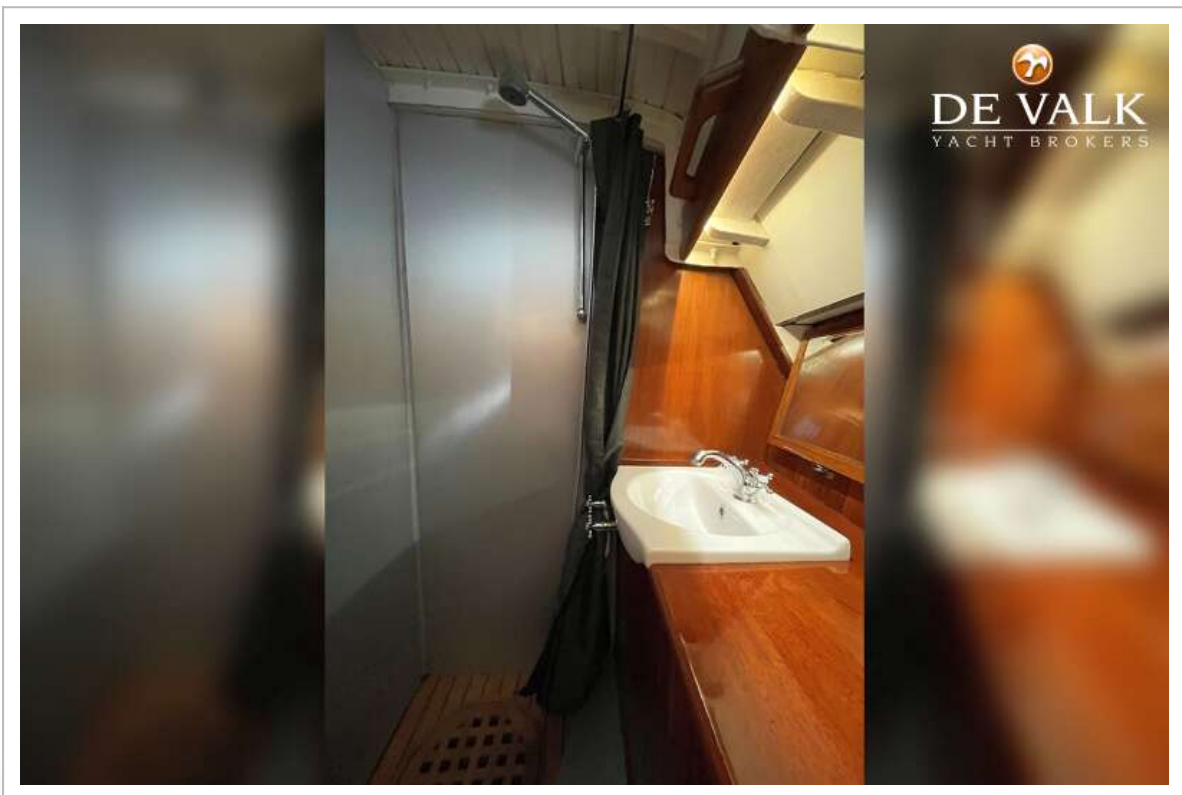
MAX OERTZ BERMUDAN CUTTER 44 FT



MAX OERTZ BERMUDAN CUTTER 44 FT



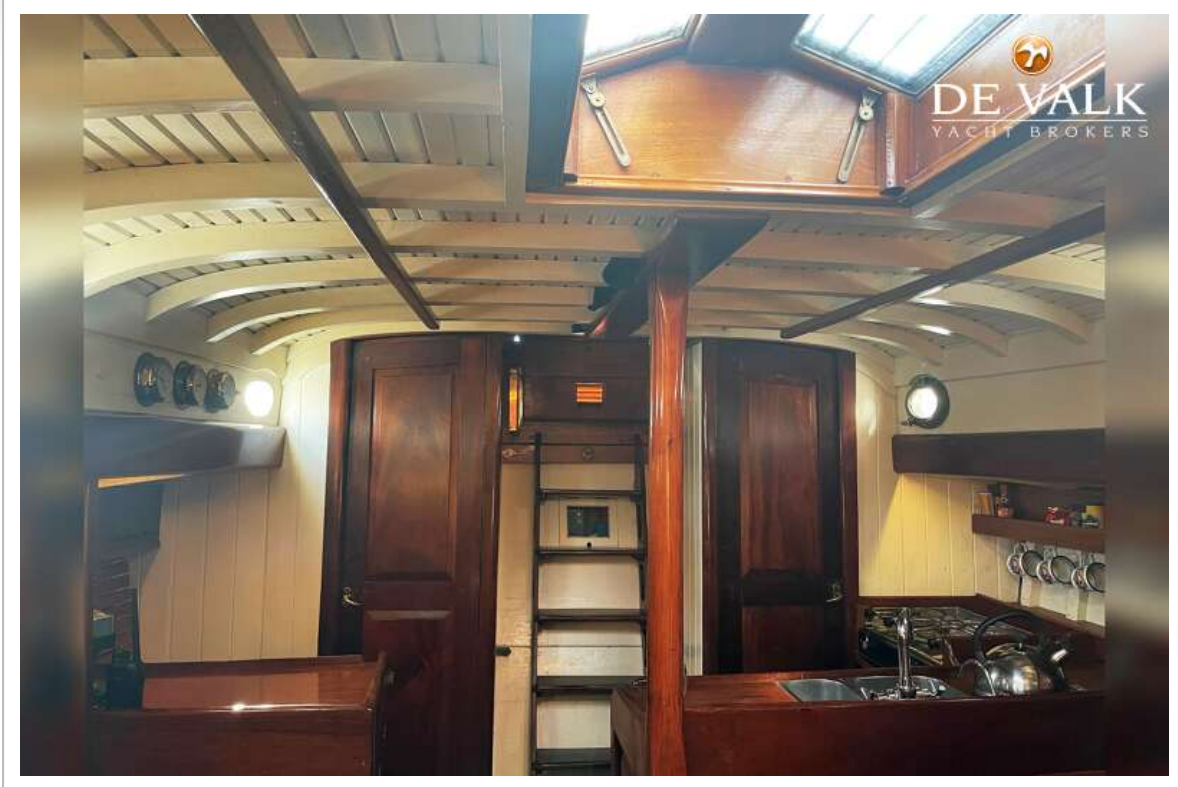
MAX OERTZ BERMUDAN CUTTER 44 FT



MAX OERTZ BERMUDAN CUTTER 44 FT



MAX OERTZ BERMUDAN CUTTER 44 FT



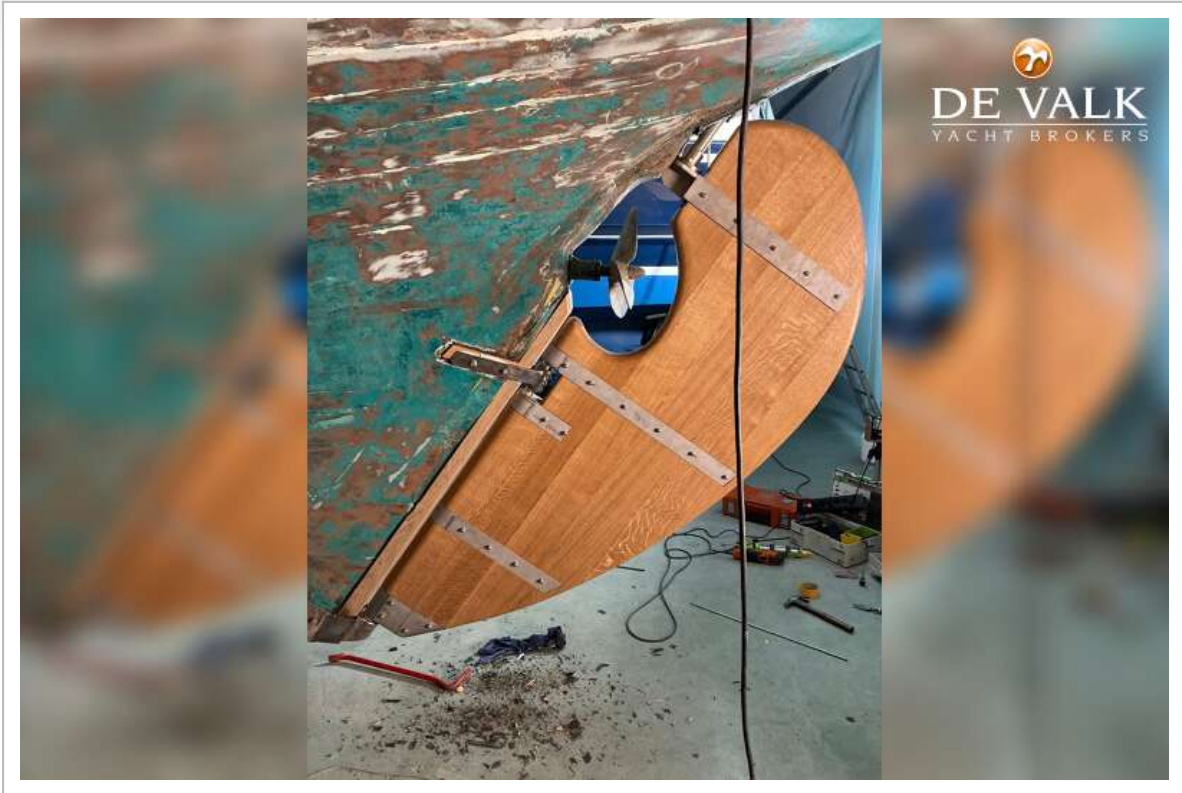
MAX OERTZ BERMUDAN CUTTER 44 FT



MAX OERTZ BERMUDAN CUTTER 44 FT



MAX OERTZ BERMUDAN CUTTER 44 FT




DE VALK
YACHT BROKERS

