



PRINCESS 54

BROKER'S COMMENTS

The Princess 54 offers very comfortable on board living for 6 persons plus 1 crew. A typical layout with 3 large double bedrooms, including a mid master cabin and a VIP cabin, 2 en-suite bathrooms, single crew cabin, lower galley, saloon with lower helm and flybridge with upper helm. Equipped with all the essentials and maintained to a high standard by her experienced yachtsman Tiempo Libre is ready to explore new destinations with a new owner.

Nick Lanting

SPECIFICATIONS

Dimensions	16.57 x 4.57 x 1.27 (m)	Builder	Princess Yachts International
Built	2009	Cabins	4
Material	GRP	Berths	7
Engine(s)	2 x Volvo Penta D12-800 EVC diesel	Hp/Kw	2 x 775.00 (hp), 569.63 (kw)
Asking price	sold (VAT)	Lying	elsewhere / Not at sales office

CONTACT

Sales office	De Valk Sint Annaland B.V.	Telephone	+31 (0)166 601 000
Address	Koelhuisweg 4 4697 RM Sint Annaland NL	E-mail	sintannaland@devalk.nl

DISCLAIMER

These particulars are given in good faith as supplied but cannot be guaranteed.



GENERAL

Model	PRINCESS 54
Type	motor yacht
LOA (m)	16,57
Beam (m)	4,57
Draft (m)	1,27
Air draft (m)	4,56
Headroom (m)	2,03
Year built	2009
Builder	Princess Yachts International
Country	Great Britain
Designer	Bernard Olesinski
Displacement (t)	23,5
CE norm	B
Hull material	GRP
Hull colour	blue
Hull shape	deep-V
Superstructure material	GRP
Rubbing strake	stainless steel + rubber insert
Deck material	GRP
Deck finish	non-skid moulded in
Superstructure deck finish	non-skid moulded in
Cockpit deck finish	teak
Antifouling (year)	Late 2017
Window frame	stainless steel
Window material	tempered glass
Deckhatch	yes
Portholes	stainless steel
Insulation	foam
Flybridge	With wetbar (coolbox, sink, bbq)
Flybridge cover	Separate covers



Flybridge suncover	yes
Radar arch	non collapsible
Fuel tank (litre)	1250
Fuel tank 2 (litre)	1250
Level indicator (fuel tank)	yes
Freshwater tank (litre)	592
Level indicator (freshwater)	yes
Blackwater tank (litre)	
Level indicator (blackwater)	yes
Blackwater tank extraction	deck extraction + pump
Wheel steering	hydraulic
Inside helm position	yes
Flybridge helm position	hydraulic
More info on hull	Polished and waxed 08/2018
Extra info	2019 external cushions and seats re-upholstered

ACCOMMODATION

Cabins	4
Berths	7
Crew cabin	yes
Crew berths	1
Interior	cherry Serotina High Gloss
Floor	carpet
Open cockpit	yes
Saloon	Beige leather settees
Headroom saloon (m)	2,03
Air-conditioning	reverse cycle airco
Chart table	yes
Dinette	yes
Sliding door to cockpit	3-part
Galley	yes



Countertop	plastic Avonite Midnight Sky
Sink	stainless steel 1 x
Cooker	electric Plastimo 4-burner
Microwave/oven combi	Panasonic
Fridge	yes
Freezer	yes
Hot water system	220V + engine 72 liter boiler
Water pressure system	electrical
Dishwasher	yes
Ice maker	In saloon
Crockery	Princess China & cutlery
Owners cabin	French bed Midships master
Bed length (m)	2,00 x 1,70
Wardrobe	hanging/drawers/shelves
Bathroom	en suite
Toilet	en suite
Toilet system	electric QuietFlush
Wash basin	in the bathroom
Shower	en suite
Extra info	Headroom 1,91 m
Guest cabin 1	French bed Forward VIP
Bed length (m)	2,00 x 1,50
Wardrobe	hanging/drawers/shelves
Bathroom	shared
Toilet	shared
Toilet system	electric QuietFlush
Wash basin	in the bathroom
Shower	shared
Extra info	Headroom 1,93 m
Guest cabin 2	Starboard guest
Bed length (m)	1,90 x 0,60 (2 x)
Wardrobe	hanging/drawers/shelves



PRINCESS 54

Extra info	Headroom 1,93 m
Crew cabin(s)	Berth 1,95 x 0,65 m
Bathroom (crew)	yes
Toilet (crew)	yes
Toilet system	electric
Wash basin	in the bathroom
Shower (crew)	yes
Extra info	With air conditioning
Washing machine/dryer combi	Bosch opposite galley
Flybridge	yes
Wet bar	Flybridge (coolbox, sink, griddle)
Extra info	Black leather helm seats
Extra info	Starboard electric window not working

MACHINERY

No of engines	2
Make	Volvo Penta
Type	D12-800 EVC
HP	775
kW	569,63
Fuel	diesel
Year installed	2009
Maximum speed (kn)	31
Cruising speed (kn)	24
Engine hours	380
Drive	shaft
Engine controls	electrical Volvo Penta EVC
Gearbox	hydraulic
Bowthruster	electric Side-Power 130 kgf
Sternthruster	electric Side-Power 125 kgf
Exhaust	watercooled Halyard



Propeller type	fixed
Propeller blades	4
Propeller shaft material	stainless steel
Shaft lubrication	water
Manual bilge pump	yes
Electric bilge pump	yes
Bilge alarm	Visual and audible
Electrical installation	12 V / 24 V / 220 V
Generator	silent separator Onan 13,5 kVA
Batteries	2017/2018 new
Battery monitor	Mastervolt, shorepower current control
Battery charger	Mastervolt 80A
Diode battery combiners	yes
Shorepower	with cable
Trimtabs	Bennett hydraulic
Extra info	Dual Racor fuel/water filters

NAVIGATION

Compass	Plastimo
Compass on flybridge	Plastimo
Electric compass	In autopilot
Depth sounder	Raymarine Depth
Log	Raymarine Speed
Repeater	Raymarine ST60+ TriData
VHF	Simrad RS87
Autopilot	Raymarine ST6002
Rudder angle indicator	yes
Radar	Garmin GMR-24 HD
Radar/GPS/plotter	Garmin 5012 HD
AIS receiver	yes
AIS transponder	yes



Navigation lights	yes
Searchlight	ACR
Loudhailer	yes

EQUIPMENT

Fixed windscreen	yes
Cockpit cover	yes
Bimini	On flybridge
Cockpit cushions	yes
Cockpit table	yes
Bathing platform	yes
Boarding ladder	stainless steel
Transom door	yes
Gangway	Opacmare 325 kg
Deck shower	yes
Anchor	CQR Plough
Anchor chain	60 m (10 mm)
Windlass	electrical
Capstan	On anchor winch
Deck wash	yes
Sea railing	stainless steel
Grab rail (superstructure)	stainless steel
Pulpit	yes
Life raft	Plastimo
Life raft (pers)	container 8
Wiper	3 x pantograph
Window heating	Eberspächer
Horn	air pressure
Fenders	Fender baskets in pulpit and on flybridge
Mooring lines	yes
TV	32" in saloon, 26" in master cabin



TV receiver	Digitenne DVB-T
Satellite	Tuner in saloon and master cabin
TracVision ball	M5 + dummy dome
Radio-cd player	Saloon and master cabin
DVD player	yes
Cockpit speakers	2 x on flybridge
Speakers in salon	2 x
Speakers in cabin	2 x in master cabin
Clock - barometer	yes
Fire extinguisher	4 x
Latest extinguisher survey	Late 2016
Extinguisher in engine room	yes
Auto extinguisher system	Seafire
Extra info	PVC sunblinds
Extra info	Flyscreens
Extra info	Safe in master cabin



PRINCESS 54



PRINCESS 54



PRINCESS 54



PRINCESS 54



PRINCESS 54



PRINCESS 54



PRINCESS 54



PRINCESS 54



PRINCESS 54



PRINCESS 54



PRINCESS 54



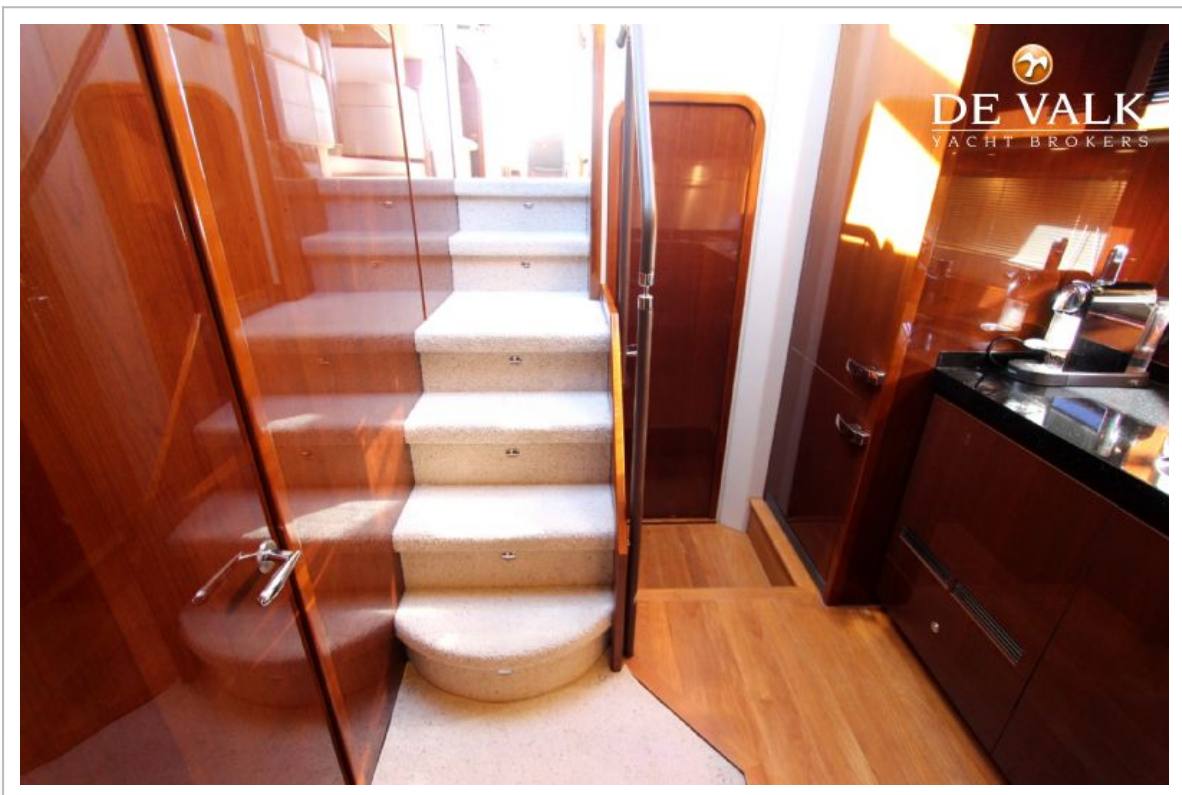
PRINCESS 54



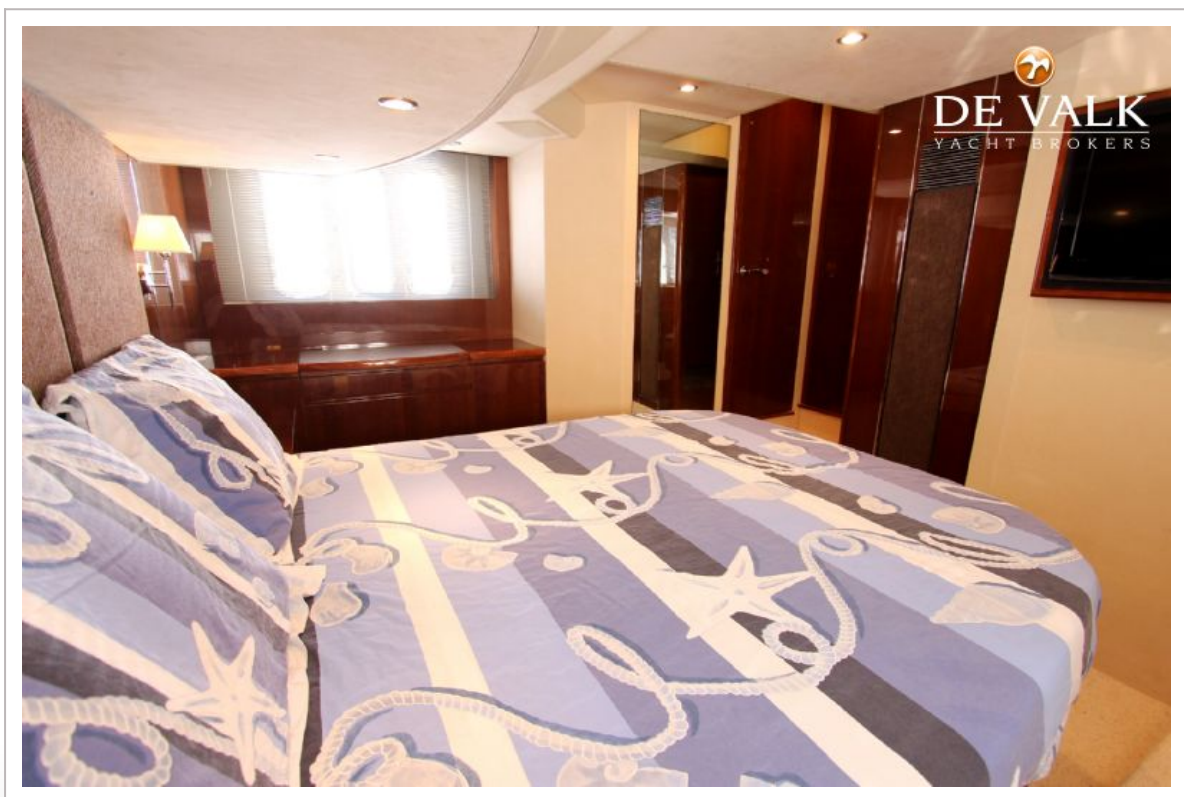
PRINCESS 54



PRINCESS 54



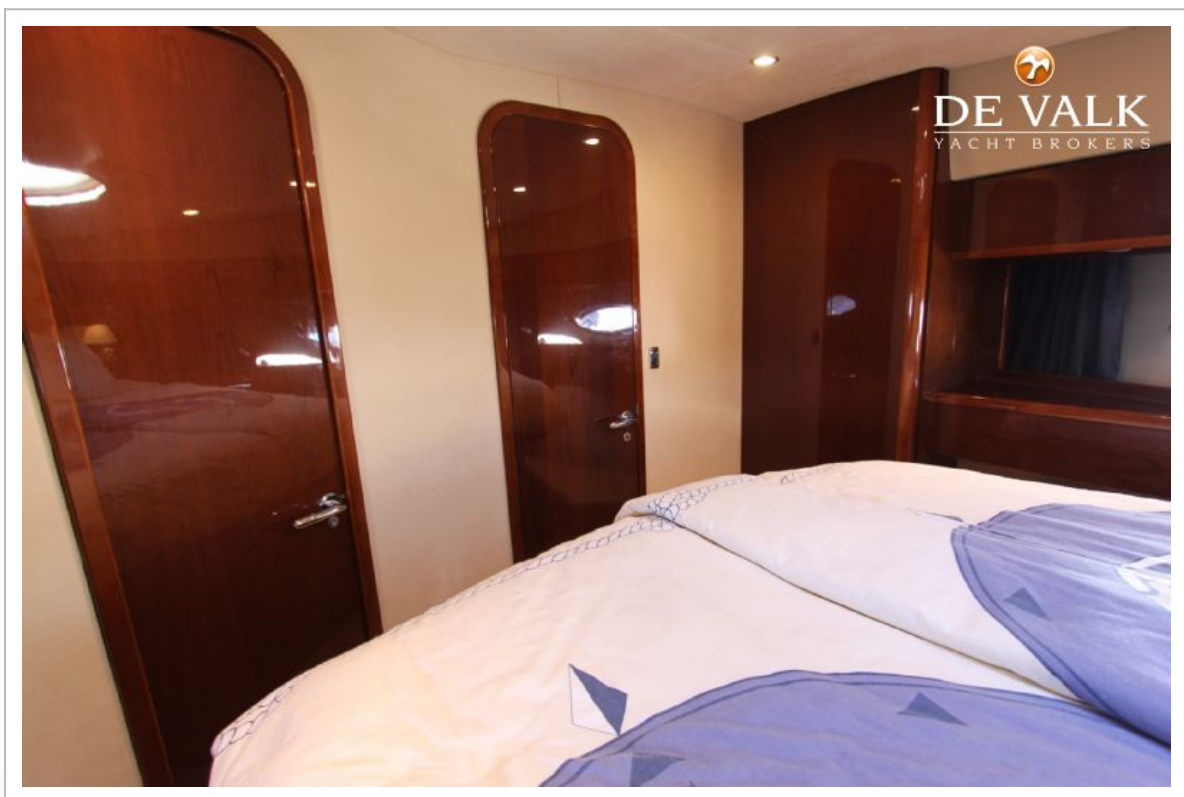
PRINCESS 54



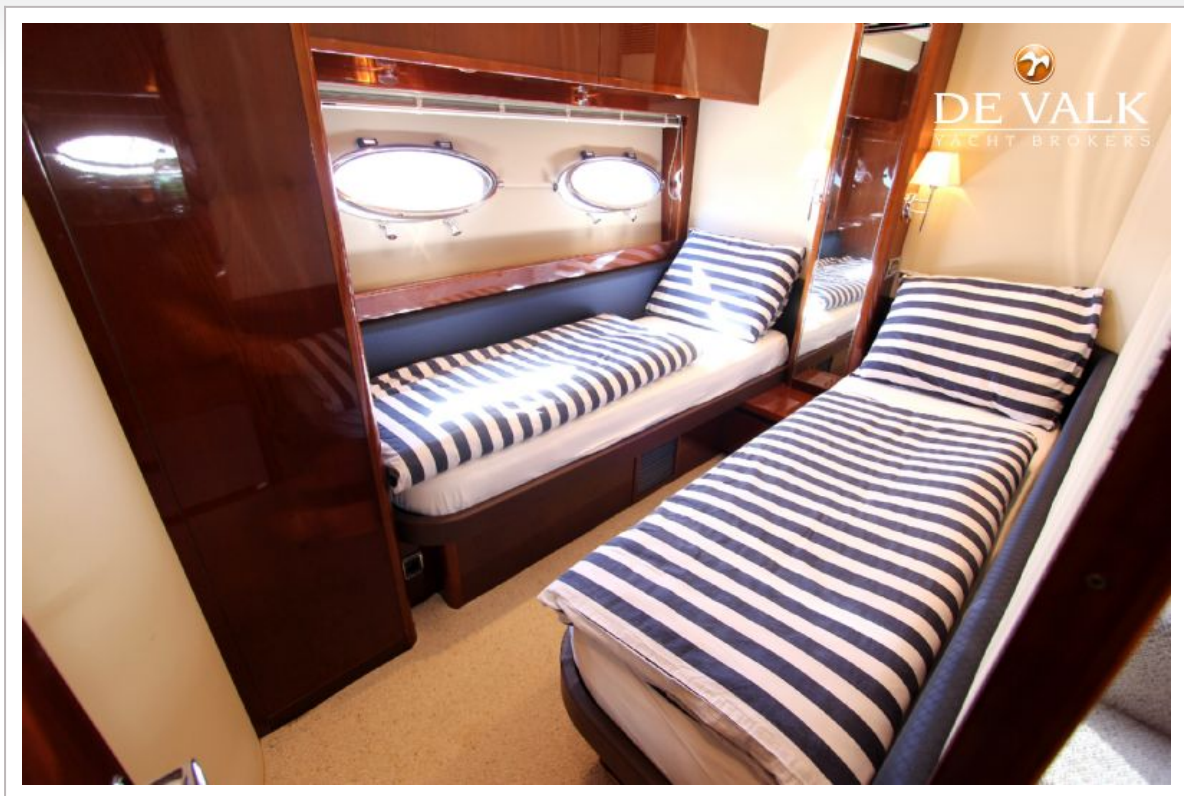
PRINCESS 54



PRINCESS 54



PRINCESS 54



PRINCESS 54





PRINCESS 54

