

Photo sistership

BENETEAU OCEANIS 31



BROKER'S COMMENTS

The Oceanis 31 is considered as the ultimate modern family cruiser. She has a timeless design and offers more comfort and space as her competitors in her class. The large cockpit offer you a feeling of safety and comfort. Easy and simple to handle and comes equipped with an extensive list of extra's you will appreciate. This Bulkhead version with two separate cabins provides for maximum comfort and privacy. It is a layout that suits sailing with friends or children. In "as new" condition (really), ready for delivery and a real good offer against the new price incl. all the extra's.

Marc Weijenberg

SPECIFICATIONS

Dimensions	9.66 x 3.39 x 1.80 (m)	Builder	Beneteau
Built	2017	Cabins	2
Material	GRP	Berths	6
Engine(s)	1 x Yanmar 3YM20 diesel	Hp/Kw	21.00 (hp), 15.44 (kw)
Asking price	sold (VAT)	Lying	at sales office

CONTACT

Sales office	De Valk Sint Annaland B.V.	Telephone	+31 (0)166 601 000
Address	Koelhuisweg 4 4697 RM Sint Annaland NL	E-mail	sintannaland@devalk.nl

DISCLAIMER

These particulars are given in good faith as supplied but cannot be guaranteed.



GENERAL

Model	BENETEAU OCEANIS 31
Type	sailing yacht
LOA (m)	9,66
LWL (m)	8,69
Beam (m)	3,39
Draft (m)	1,80
Air draft (m)	14,50
Headroom (m)	1,85
Year built	2017
Launched	not yet commissioned
Builder	Beneteau
Country	France
Designer	Finot Conq/Nauta Design
Displacement (t)	4,85
Ballast (tonnes)	cast iron 1
CE norm	B
Hull material	GRP
Hull colour	white
Hull shape	round-bilged
Keel type	fin keel with bulb
Superstructure material	GRP
Deck material	GRP
Deck finish	non-skid moulded in
Superstructure deck finish	non-skid moulded in
Cockpit deck finish	teak
Window material	polycarbonate
Deckhatch	2 x
Portholes	
Fuel tank (litre)	polyethylene 130
Freshwater tank (litre)	polyethylene 155



Blackwater tank (litre)	polyethylene 80
Blackwater tank extraction	deck extraction + uw line
Wheel steering	cable steering Lewmar Constellation
Emergency tiller	yes
Extra info	extra portholes in aftcabin
Extra info	not been used or slept on. Mattresses still in plastic.

ACCOMMODATION

Cabins	2
Berths	6
Interior	mahogany Alpi
Floor	woodprint
Saloon	yes
Headroom saloon (m)	1,85
Chart table	yes
Aft Cabin	yes
Dinette	yes
Galley	yes
Countertop	plastic
Sink	stainless steel 2 x
Cooker	calor gas Force 10
Oven	Force 10
Fridge	12v Vitfrigo
Hot water system	220V + engine
Water pressure system	electrical
Owners cabin	double bed Aft/achter/hinten
Bed length (m)	2,24 x 1,70
Wardrobe	hanging and shelves
Bathroom	shared I
Toilet	shared
Toilet system	manual



Wash basin	in the bathroom
Shower	shared
Guest cabin 1	v-bed
Bed length (m)	with fill-in piece 2,03 x 1,66
Wardrobe	hanging and shelves
Extra info	Beneteau Comfort trim level

MACHINERY

No of engines	1
Make	Yanmar
Type	3YM20
HP	21,00
kW	15,44
Fuel	diesel
Year installed	2017
Maximum speed (kn)	6,5
Cruising speed (kn)	6
Consumption (l/hr)	2
Engine hours	2,9
Engine cooling system	freshwater heat exchanger
Drive	shaft
Engine controls	bowden cable
Gearbox	mechanical
Exhaust	watercooled
Propeller type	folding
Propeller blades	3
Propeller shaft material	stainless steel
Shaft lubrication	water
Manual bilge pump	yes
Electric bilge pump	yes
Electrical installation	with 220v socket inside 12/220v



Start battery	1 x 70amps
Service battery	2 x 70amps
Battery monitor	yes
Battery charger	Christec 12v/25amps
Shorepower	with cable
Extra info	rope cutter on propshaft

NAVIGATION

Compass	Plastimo
Electric compass	via autopilot
Depth sounder	B&G Triton 2
Log	B&G Triton 2
Windset	B&G Triton 2
VHF	B&G V50
Autopilot	with Gyro compass B&G NAC3
Rudder angle indicator	via autopilot
Plotter/GPS	7" touch screen B&G Zeus2
Electronic chart(s)	Silver Europe edition 1 x Navionics
AIS receiver	via vhf B&G
Navigation lights	LED
Extra info	Beneteau Coastal + Offshore Pack B&G

EQUIPMENT

Cockpit table	yes
Bathing platform	yes
Boarding ladder	stainless steel
Deck shower	hot+cold
Anchor	Bruce
Anchor chain	yes
Windlass	electrical Lewmar Quick
Sea railing	wire



Grab rail (superstructure)	wood
Railing side opening gates	2 x
Pushpit	yes
Pulpit	yes
Fenders	yes
Mooring lines	yes
Radio-cd player	VDO Fusion
Cockpit speakers	yes
Speakers in salon	yes
Extra info	covers for steeringwheel en pedestal

RIGGING

Rigging	fractional
Standing rigging	wire
Brand mast	Z-Spar
Material mast	aluminium
Spreaders	2 x set
Mainsail	Elvstrom (2018)
Mainsail cover	with Zipp-Bag
Jib	Elvstrom (2018)
Genoa furler	Profurl
Reefing System	slabreefing
Boomvang	mechanical and tackle
Genoa sheetwinches	2 x Harken 35ST
Halyard winches	2 x Harken 35ST
Extra info	mainsheet on coachroof



BENETEAU OCEANIS 31



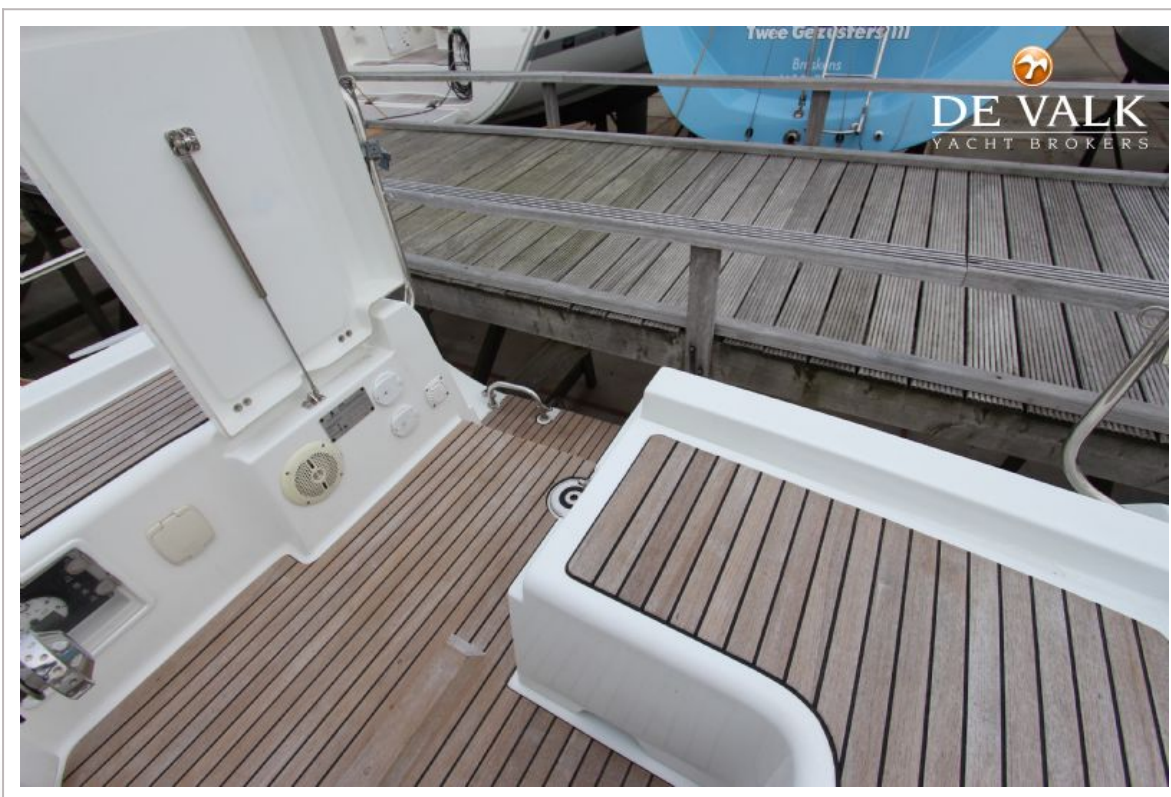
BENETEAU OCEANIS 31



BENETEAU OCEANIS 31



BENETEAU OCEANIS 31



BENETEAU OCEANIS 31



BENETEAU OCEANIS 31



BENETEAU OCEANIS 31



BENETEAU OCEANIS 31



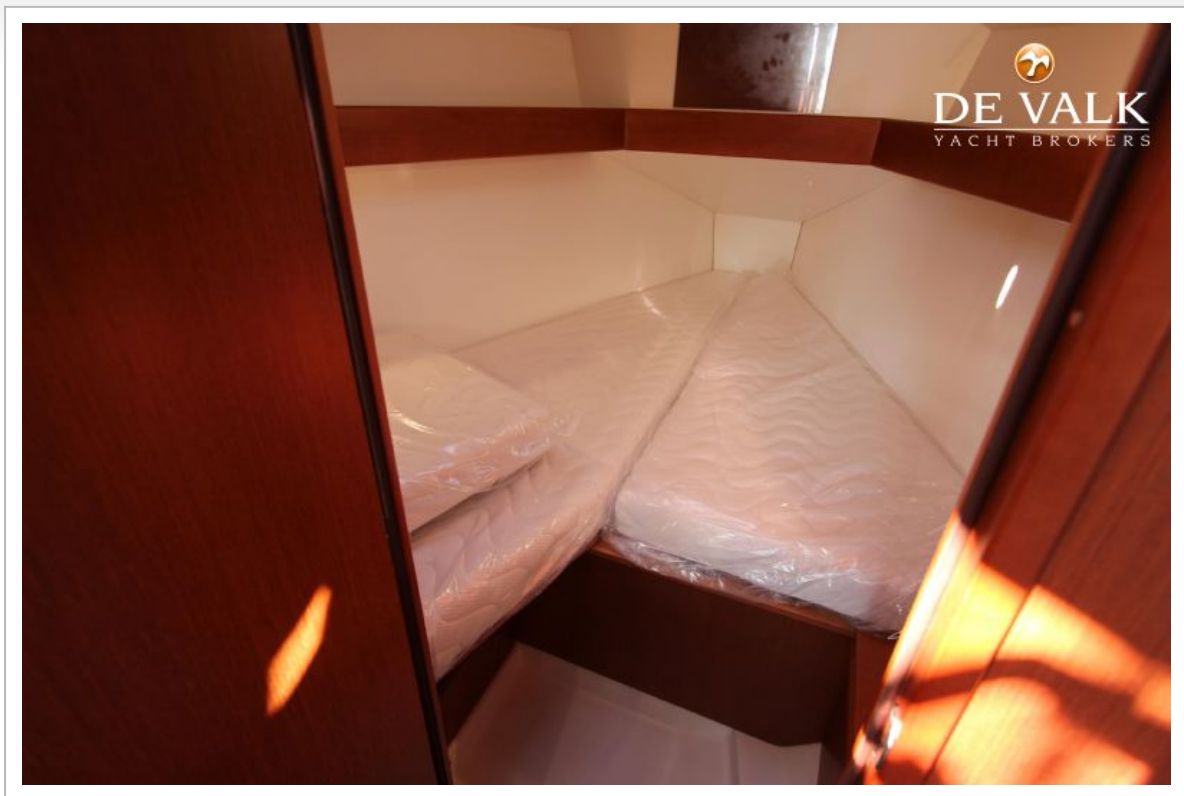


BENETEAU OCEANIS 31

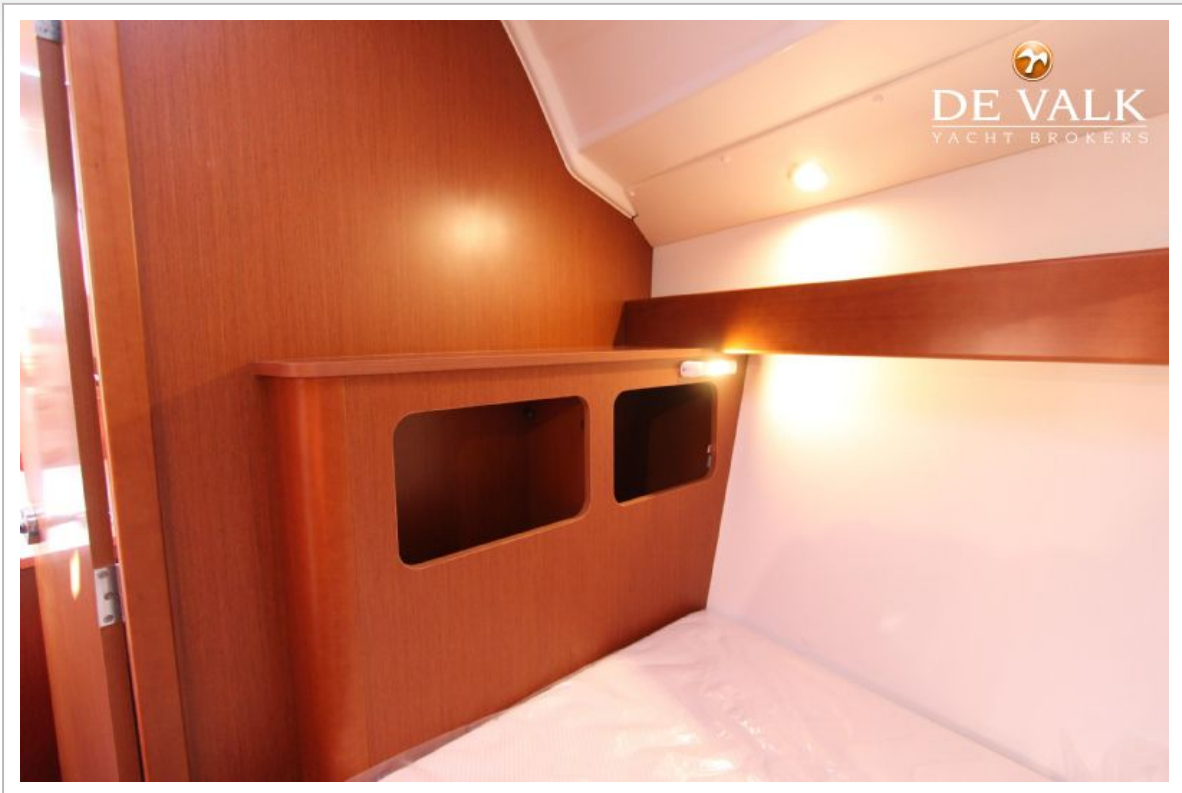


BENETEAU OCEANIS 31

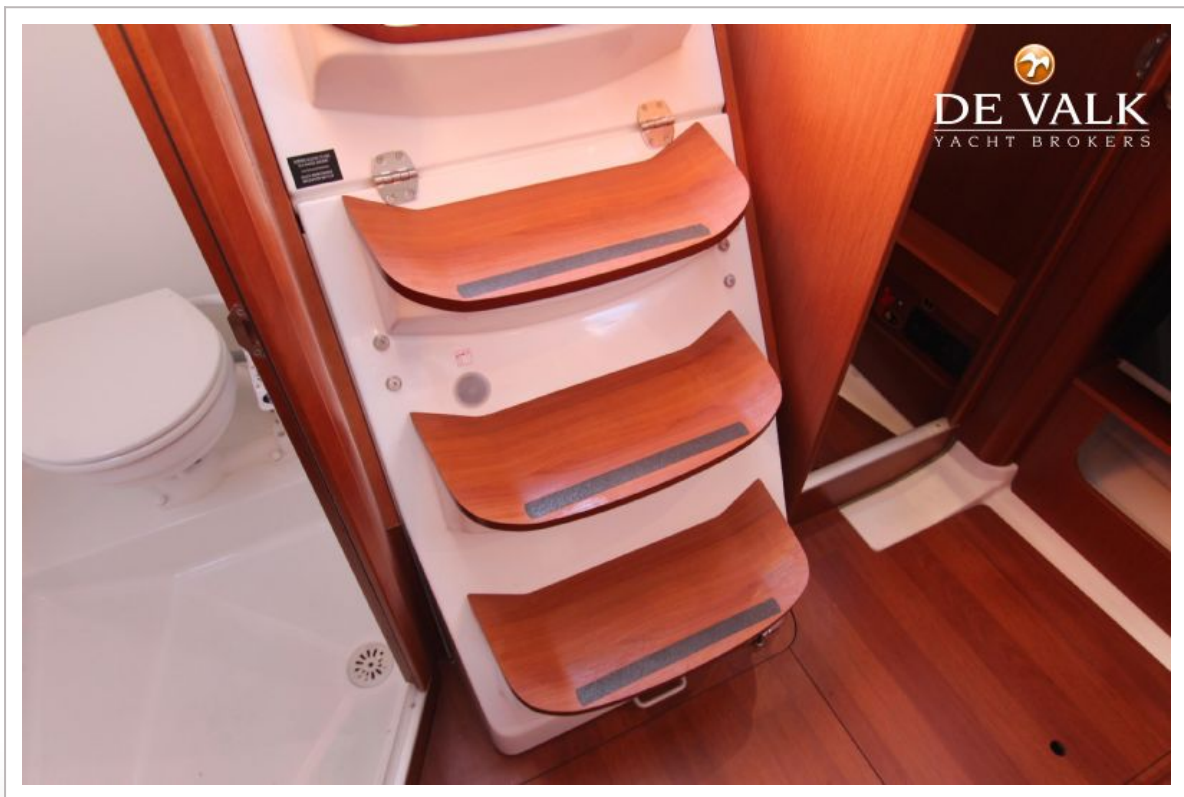




BENETEAU OCEANIS 31



BENETEAU OCEANIS 31



BENETEAU OCEANIS 31



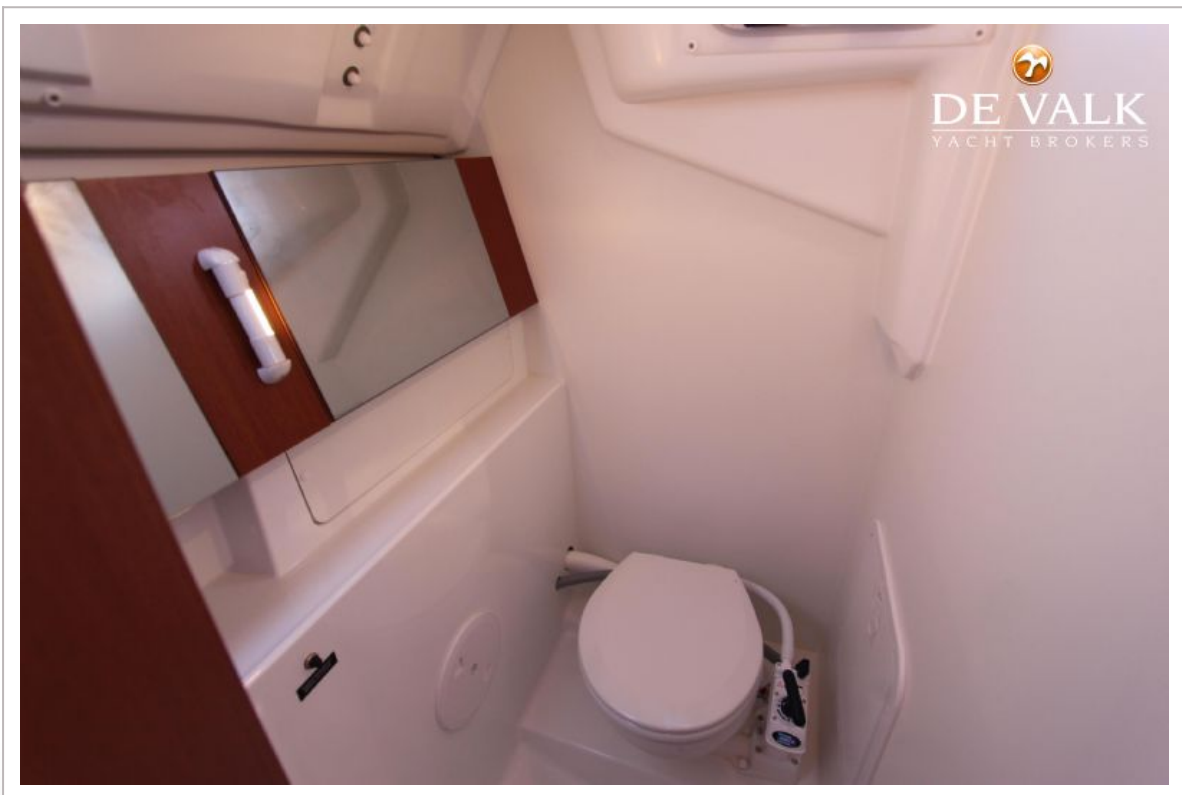
BENETEAU OCEANIS 31

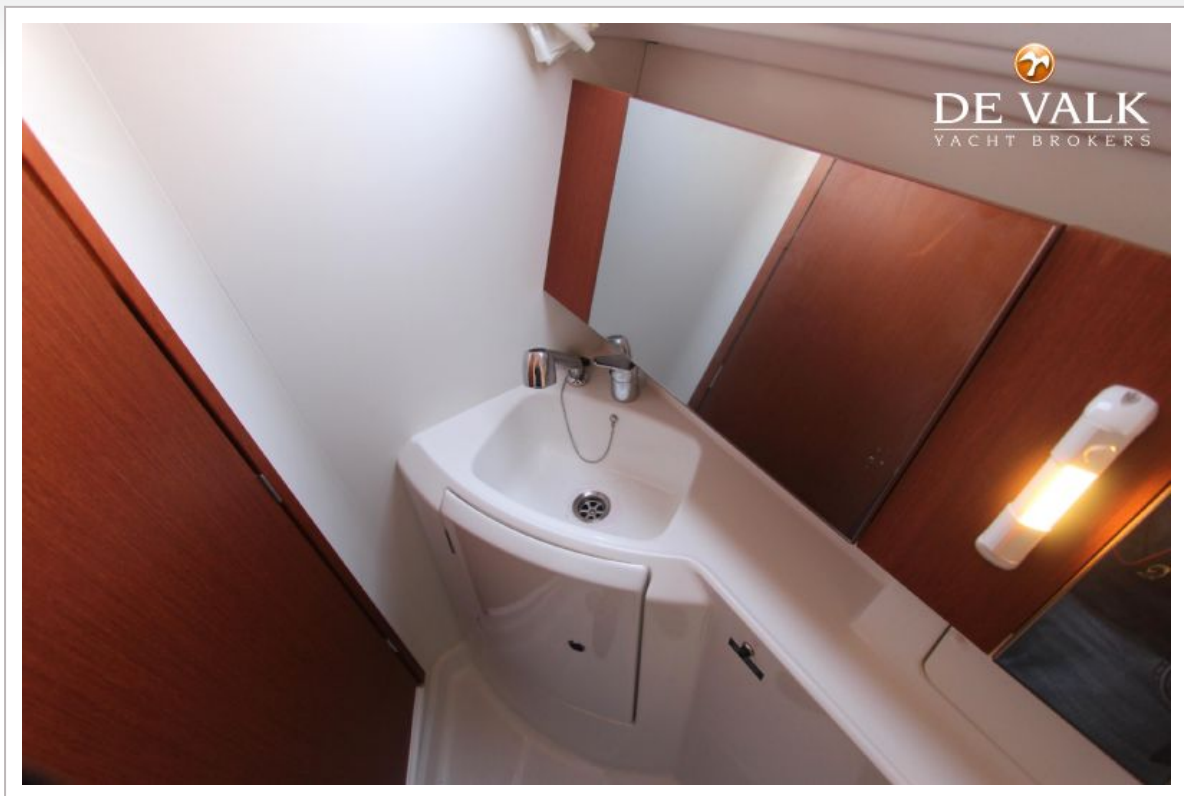


BENETEAU OCEANIS 31

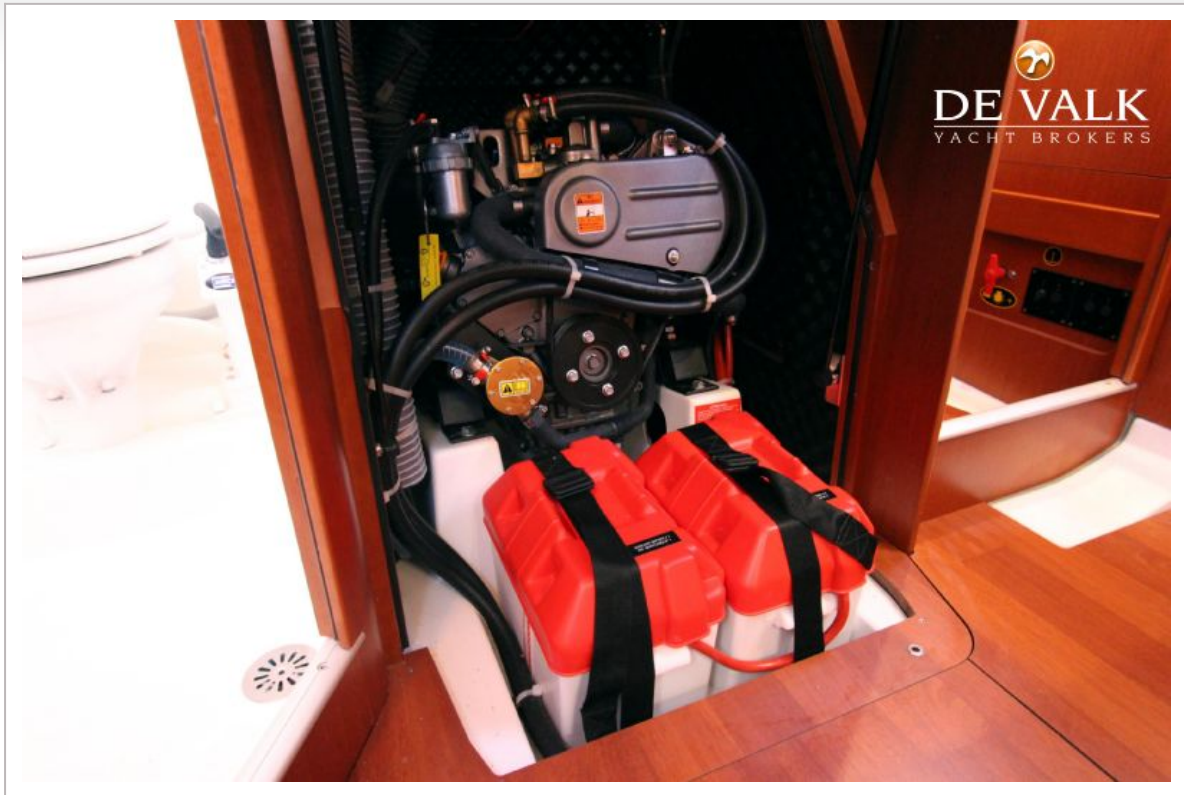


BENETEAU OCEANIS 31





BENETEAU OCEANIS 31



BENETEAU OCEANIS 31



