



DE VALK
YACHT BROKERS



DUFOUR 45 CLASSIC



DE VALK
YACHT BROKERS

DUFOUR 45 CLASSIC

BROKER'S COMMENTS

This specific Dufour 45 Classic has the spacious two cabin layout with the largest owner's cabin in her class. The Dufour 45 Classic has always been well maintained by the current owner and has been inside a heated hall every winter. The woodwork inside has also remained in a neat condition. In 2015 a new bow thruster has been installed which makes maneuvering very easy. This Dufour 45 Classic can be visited by appointment, she is definitely worth it!

Marc Weijenberg

SPECIFICATIONS

Dimensions	14.00 x 4.30 x 2.35 (m)	Builder	Dufour Yachts
Built	1997	Cabins	3
Material	GRP	Berths	8
Engine(s)	1 x Volvo Penta MD22B diesel	Hp/Kw	59.00 (hp), 43.37 (kw)
Asking price	sold (VAT)	Lying	at sales office

CONTACT

Sales office	De Valk Sint Annaland B.V.	Telephone	+31 166 601 000
Address	Koelhuisweg 4 4697 RM Sint Annaland NL	E-mail	sintannaland@devalk.nl

DISCLAIMER

These particulars are given in good faith as supplied but cannot be guaranteed.



DUFOUR 45 CLASSIC

GENERAL

Model	DUFOUR 45 CLASSIC
Type	sailing yacht
LOA (m)	14,00
LWL (m)	11,40
Beam (m)	4,30
Draft (m)	2,35
Air draft (m)	21,00
Headroom (m)	1,90
Year built	1997
Launched	1998
Builder	Dufour Yachts
Country	France
Designer	J&J Design
Displacement (t)	11
CE norm	A
Hull material	GRP
Keel type	bulb keel
Superstructure material	GRP
Deck material	GRP
Deck finish	teak
Superstructure deck finish	non-skid moulded in
Cockpit deck finish	teak
Dorades	yes
Window frame	aluminium
Window material	perspex
Deckhatch	yes
Mast can be lowered	manual
Fuel tank (litre)	stainless steel 200
Level indicator (fuel tank)	yes
Freshwater tank (litre)	450



DUFOUR 45 CLASSIC

Level indicator (freshwater)	yes
Wheel steering	cable steering

ACCOMMODATION

Cabins	3
Berths	8
Interior	mahogany
Floor	teak and holly
Saloon	yes
Headroom saloon (m)	1,90
Heating	diesel ducted hot air Webasto Airtop 5000
Chart table	yes
Dinette	yes
Dinette to convert into berth	yes
Galley	yes
Countertop	corian
Sink	stainless steel 2x
Cooker	calor gas
Oven	yes
Fridge	Isotherm ASU system
Hot water system	220V + engine Atwood 40 Liters
Water pressure system	electrical
Manual and/or foot pump	yes
Crockery	yes
Owners cabin	double bed
Bed length (m)	2,00 x 1,40
Wardrobe	hanging and shelves
Bathroom	en suite
Toilet	en suite
Toilet system	manual
Wash basin	in the bathroom



DUFOUR 45 CLASSIC

Shower	en suite
Guest cabin 1	double bed
Bed length (m)	2,00 x 1,50
Wardrobe	hanging and shelves
Bathroom	shared
Toilet	shared
Toilet system	manual
Wash basin	in the bathroom
Shower	shared
Guest cabin 2	double bed
Bed length (m)	2,00 x 1,50

MACHINERY

No of engines	1
Make	Volvo Penta
Type	MD22B
HP	59
kW	43,37
Fuel	diesel
Year installed	1997
Maximum speed (kn)	8
Cruising speed (kn)	6,5
Consumption (l/hr)	4
Engine hours	614
Drive	shaft
Engine controls	bowden cable
Gearbox	mechanical
Bowthruster	electric Vetus (2015)
Exhaust	watercooled
Propeller type	fixed
Propeller blades	3



DUFOUR 45 CLASSIC

Propeller shaft material	steel
Electric bilge pump	yes
Electrical installation	12v/220v
Batteries	yes
Start battery	12v/108Ah (2017)
Service battery	3x 12v/105Ah (2017)
Battery monitor	yes
Battery charger	Victron Skylla - EP44 12/60
Shorepower	with cable
Insulation transformer	Victron battery Isolator

NAVIGATION

Compass	Plastimo France
Electric compass	Autohelm ST7000
Depth sounder	Autohelm Tridata ST50
Log	Raymarine Autohelm ST50
Windset	Autohelm Wind ST50
VHF	Floating HX851
Autopilot	Autohelm ST7000
GPS	Autohelm GPS ST50

EQUIPMENT

Fixed windscreen	yes
Boarding ladder	stainless steel
Deck shower	W+C
Anchor	CQR Plough
Anchor chain	yes
Windlass	electrical
Capstan	yes
Sea railing	wire
Grab rail (superstructure)	wood



DUFOUR 45 CLASSIC

Pushpit	yes
Fenders	yes
Mooring lines	yes
TV receiver	Glomex
Radio	Pioneer
Cockpit speakers	yes
Clock - barometer	yes
Fire extinguisher	yes

RIGGING

Rigging	sloop
Standing rigging	wire
Brand mast	Z-Spar
Material mast	aluminium
Spreaders	yes
Battcars	yes
Fully battened mainsail	(1997)
Jib I	(2010)
Genoa I	Lion Sails (2018)
Genoa furler	yes
Spinnaker	(2010)
Reefing System	quick-one-line-reefing
Backstay adjuster	hydraulic
Primary sheet winch	2x Lewmar 54 ST
Secondary sheet winch	2x Lewmar 48 ST
Genoa sheetwinches	Lewmar 44 ST
Gennaker pole	aluminium
Extra info	Lazy jack (2015)



DUFOUR 45 CLASSIC



DUFOUR 45 CLASSIC



DUFOUR 45 CLASSIC



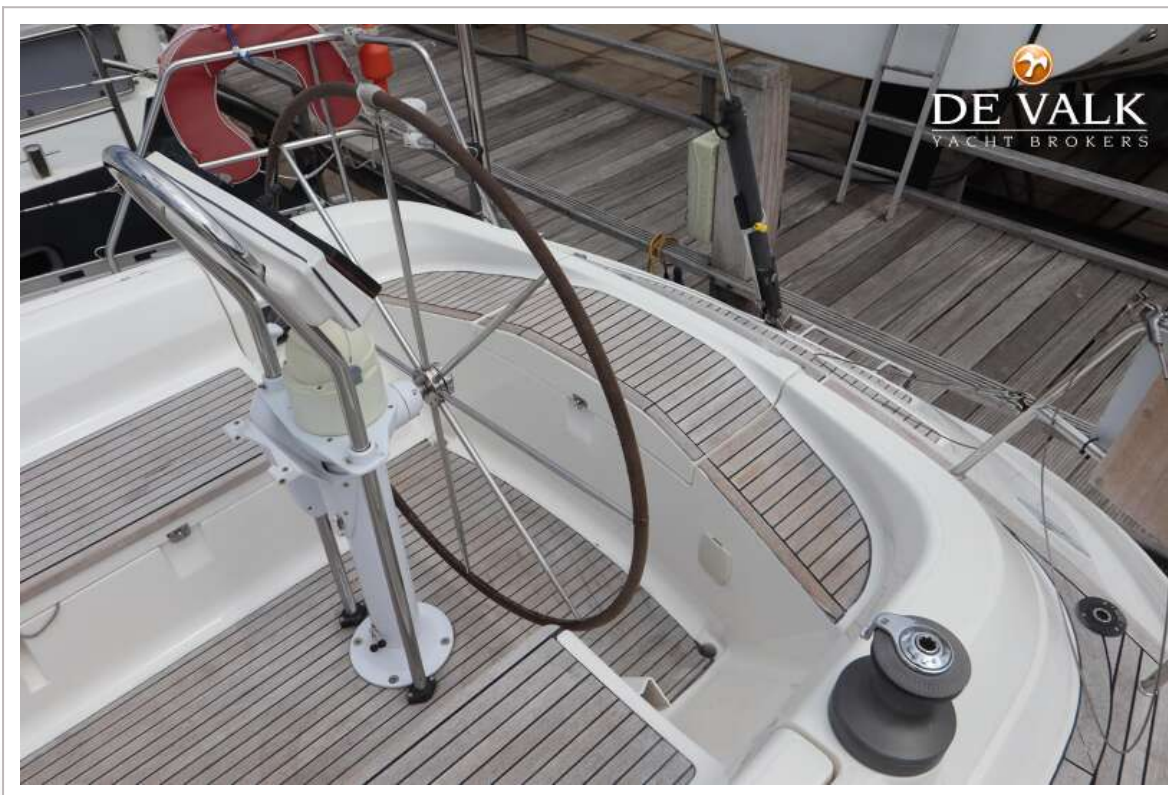
DUFOUR 45 CLASSIC



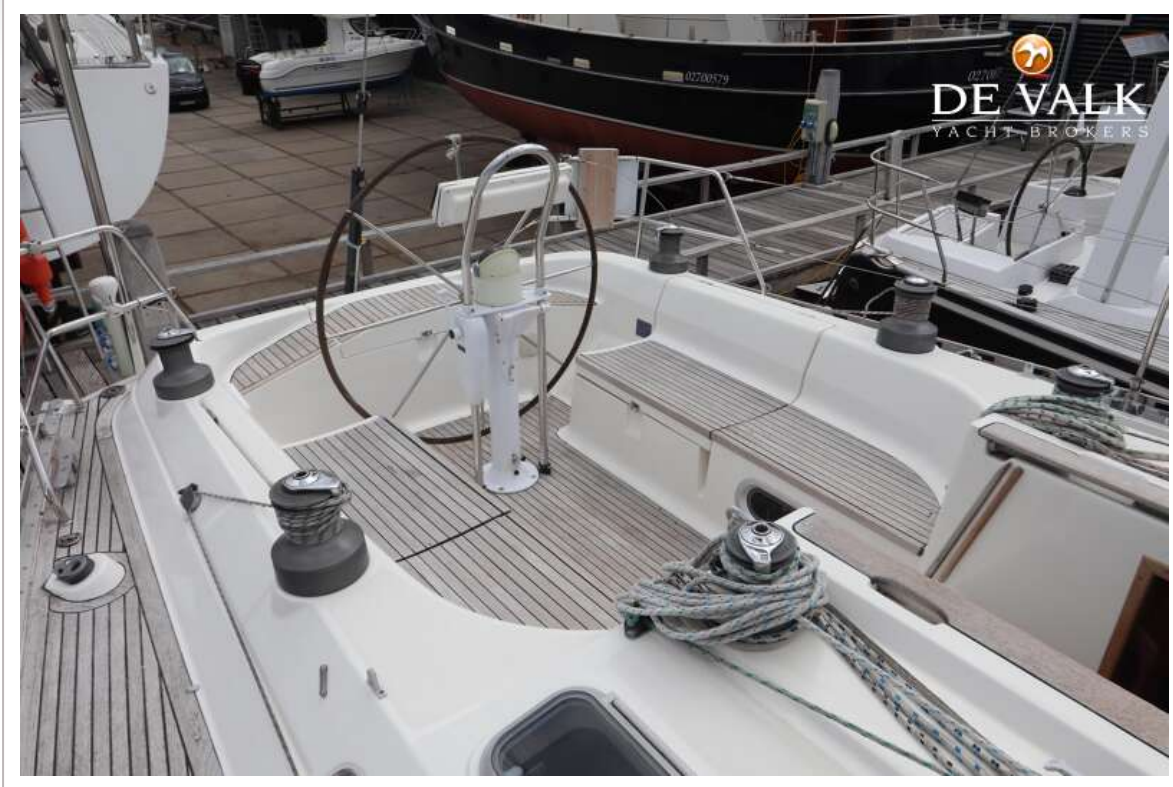
DUFOUR 45 CLASSIC



DUFOUR 45 CLASSIC



DUFOUR 45 CLASSIC



DUFOUR 45 CLASSIC



DUFOUR 45 CLASSIC



DUFOUR 45 CLASSIC



DUFOUR 45 CLASSIC



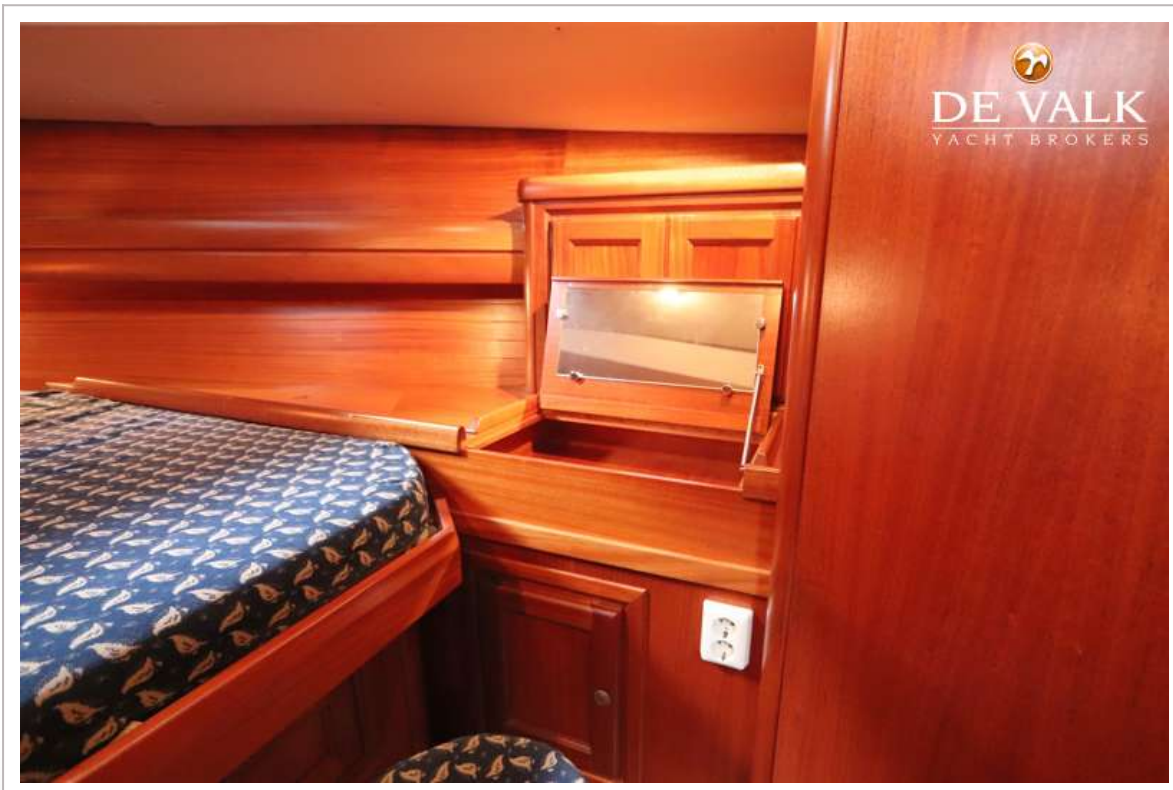
DUFOUR 45 CLASSIC



DUFOUR 45 CLASSIC



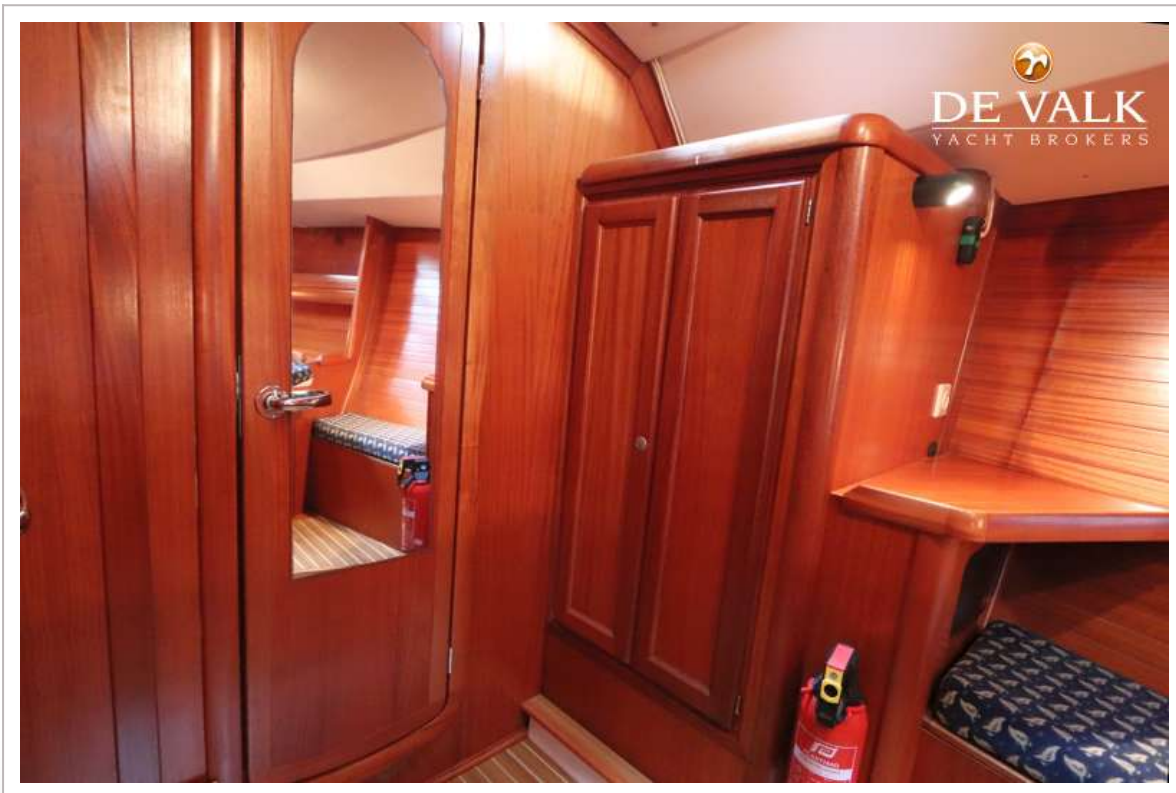
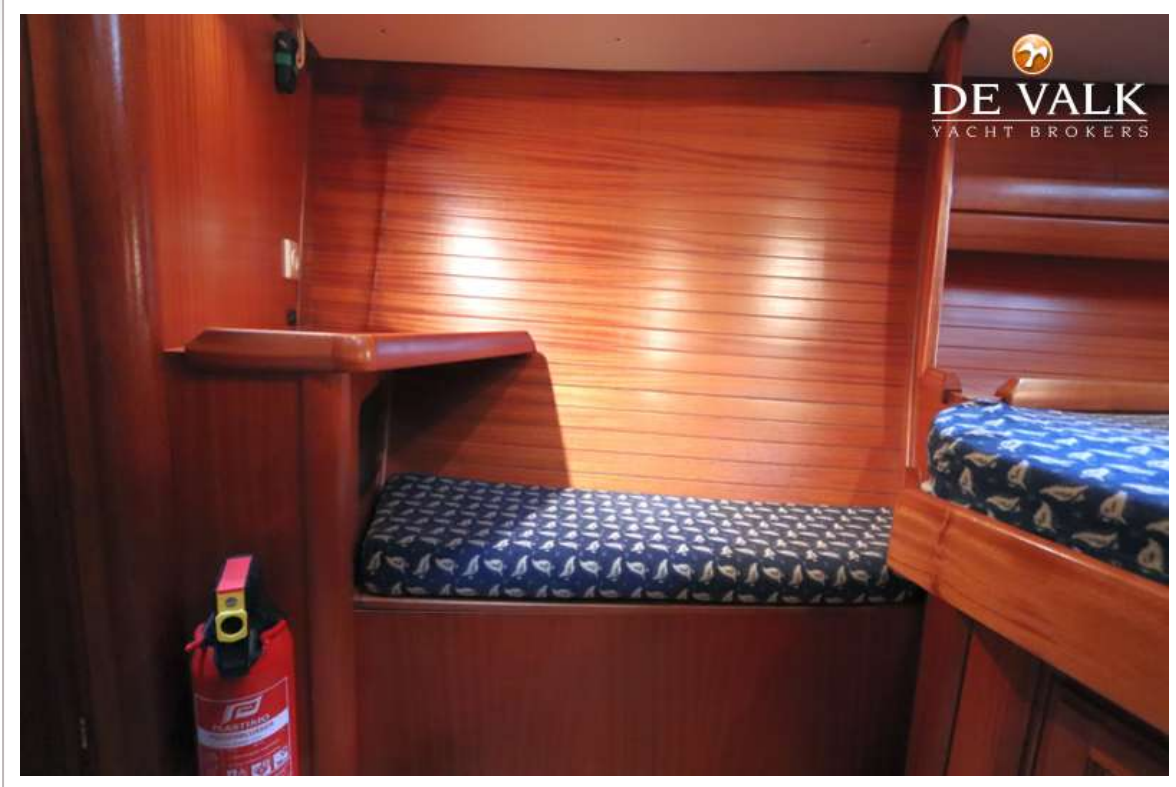
DUFOUR 45 CLASSIC



DUFOUR 45 CLASSIC



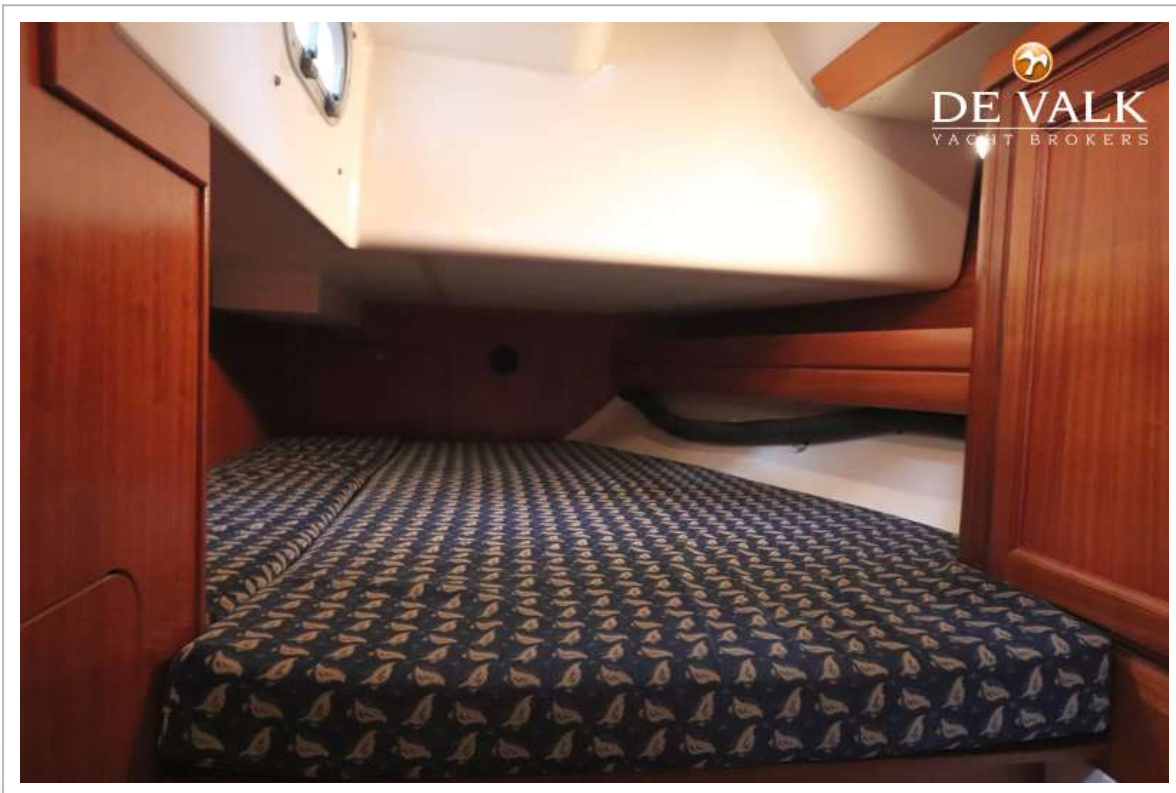
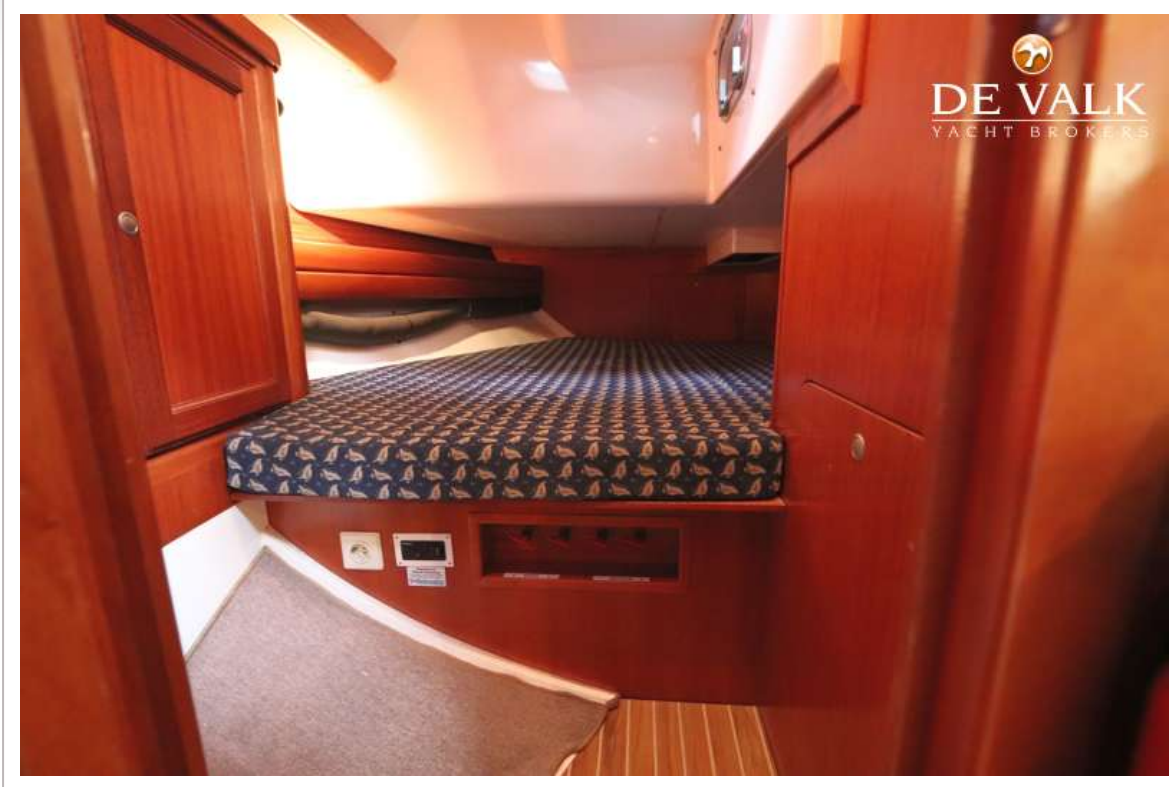
DUFOUR 45 CLASSIC



DUFOUR 45 CLASSIC



DUFOUR 45 CLASSIC



DUFOUR 45 CLASSIC



DUFOUR 45 CLASSIC

