



DE VALK
YACHT BROKERS



BAVARIA 47 CRUISER



DE VALK
YACHT BROKERS

BAVARIA 47 CRUISER

BROKER'S COMMENTS

Charming 47 foot model by the known Bavaria Yard. Sailed privately by her first owner, she has been sailed and kept in good condition throughout. An abundance of space on and below decks for family and friends. Equipped with full furling sails, electric winches and bow thruster, anyone can handle her in all conditions. The interior finish is modern with brown-stained walnut and light colored upholstery. Recent build, lots of options and ready to go so come onboard and see what she has to offer.

Marc Weijenberg

SPECIFICATIONS

Dimensions	14.49 x 4.39 x 1.85 (m)	Builder	Bavaria Yachtbau GmbH
Built	2010	Cabins	4
Material	GRP	Berths	8
Engine(s)	1 x Volvo Penta D2-75 diesel	Hp/Kw	75.00 (hp), 55.13 (kw)
Asking price	sold (VAT)	Lying	at sales office

CONTACT

Sales office	De Valk Sint Annaland B.V.	Telephone	+31 166 601 000
Address	Koelhuisweg 4 4697 RM Sint Annaland NL	E-mail	sintannaland@devalk.nl

DISCLAIMER

These particulars are given in good faith as supplied but cannot be guaranteed.



BAVARIA 47 CRUISER

GENERAL

Model	BAVARIA 47 CRUISER
Type	sailing yacht
LOA (m)	14,49
LWL (m)	12,20
Beam (m)	4,39
Draft (m)	1,85
Air draft (m)	19,40
Headroom (m)	2,00
Year built	2010
Launched	2010
Builder	Bavaria Yachtbau GmbH
Country	Germany
Designer	J&J Design
Displacement (t)	13,5
Ballast (tonnes)	cast iron 3,4
CE norm	A
Hull material	GRP
Hull colour	white
Hull shape	round-bilged
Keel type	fin keel
Superstructure material	GRP
Deck material	GRP
Deck finish	teak 8mm
Cockpit deck finish	teak
Dorades	1 x
Window frame	aluminium
Window material	polycarbonate
Deckhatch	yes
Portholes	aluminium
Fuel tank (litre)	polyethylene 210



BAVARIA 47 CRUISER

Freshwater tank (litre)	polyethylene 460 (in 2 tanks)
Blackwater tank (litre)	polyethylene 2 x
Blackwater tank extraction	deck extraction + uw line
Wheel steering	cable steering 2 x Lewmar
Emergency tiller	yes
Extra info	stainless bowstrip

ACCOMMODATION

Cabins	4
Berths	8
Interior	walnut
Floor	woodprint
Saloon	with u-shaped settee
Headroom saloon (m)	2,00
Heating	diesel ducted hot air Webasto Evo 5500 5 x vents
Chart table	yes
Dinette	in white "leather look" vinyl
Galley	yes
Countertop	plastic
Sink	stainless steel
Cooker	calor gas 2-burner
Oven	yes
Microwave	LG (220v)
Fridge	Isotherm 12v
Freezer	Isotherm 12v
Hot water system	220V + engine Quick
Water pressure system	electrical
Owners cabin	double bed
Bed length (m)	with special mattress 2,05 x 2,05
Wardrobe	hanging and shelves
Bathroom	shared 1



BAVARIA 47 CRUISER

Toilet	shared
Toilet system	manual
Wash basin	in the bathroom
Shower	shared
Guest cabin 1	bunk bed
Bed length (m)	2,00 x 0,55
Wardrobe	hanging and shelves
Guest cabin 2	double bed
Bed length (m)	2,00 x 1,70
Wardrobe	hanging and shelves
Bathroom	shared II
Toilet	shared
Toilet system	manual
Wash basin	in the bathroom
Shower	shared
Guest cabin 3	double bed
Bed length (m)	2,00 x 1,70
Wardrobe	hanging and shelves

MACHINERY

No of engines	1
Make	Volvo Penta
Type	D2-75
HP	75,00
kW	55,13
Fuel	diesel
Year installed	2010
Maximum speed (kn)	8
Cruising speed (kn)	7
Consumption (l/hr)	4
Engine hours	810



BAVARIA 47 CRUISER

Engine cooling system	freshwater heat exchanger
Drive	sail-drive
Engine controls	bowden cable
Gearbox	Volvo Penta 150S
Bowthruster	electric Vetus 95kgf/185
Exhaust	watercooled
Propeller type	folding Volvo Penta
Propeller blades	4
Manual bilge pump	yes
Electric bilge pump	yes
Electrical installation	12/220v
Start battery	1 x 90amp
Service battery	5 x AGM 135amp Gel
Battery monitor	Victron
Battery charger/inverter	12v/3000watt/120amp Victron Multiplus
Shorepower	with cable
Insulation transformer	Victron Mass Gi3.5

NAVIGATION

Compass	2 x Plastimo Horizon
Electric compass	via autopilot
Depth sounder/log	Raymarine ST60 Tridata
Windset	Raymarine ST60
VHF	+ cockpit set Raymarine Ray240E
VHF handheld	Standard Horizon
Autopilot	+ remote Raymarine ST6002
Rudder angle indicator	via autopilot
Radar/GPS/plotter	in cockpit Raymarine E120
PC connection	yes
Electronic chart(s)	1 x
AIS transponder	Class B Raymarine AIS 500



BAVARIA 47 CRUISER

EPIRB	Kannad Safelink (2016)
Navigation lights	yes
Extra info	radar signal amplifier Echomax Active XBand

EQUIPMENT

Sprayhood with grab rail	yes
Bimini	semi-cockpit cover
Winter cover	yes
Cockpit cushions	yes
Cockpit table	yes
Bathing platform	yes
Boarding ladder	stainless steel
Transom door	yes
Deck shower	hot + cold
Anchor	CQR Plough
Anchor chain	50 mtr
Windlass	electrical Quick Hector 12v
Outboard support	yes
Sea railing	wire
Grab rail (superstructure)	stainless steel
Railing side opening gates	2 x
Pushpit	wrap-around cockpit
Pulpit	yes
Life raft	container Plastimo Trans Ocean
Life raft (pers)	10
Last life raft survey	2010
Lifejackets	yes
Lifebuoy	yes
Safety lines on deck	yes
Fenders	yes
Mooring lines	yes



BAVARIA 47 CRUISER

TV	Philips
TV receiver	(no subscription) Glomex digital

RIGGING

Rigging	sloop
Standing rigging	wire
Brand mast	Seldén
Material mast	aluminium
Spreaders	2 sets
Fully battened mainsail	Elvstrom HT
Stoway mast	yes
High aspect	Elvstrom
Genoa I	Elvstrom HT Tri-optimal
Genoa furler	Furlex
Genoa cover	yes
A-symmetric spi	with squeezer Elvstrom Blister
Reefing System	main in-mast furling
Backstay adjuster	mechanical Selden
Boomvang	gasspring Selden Rodkicker
Primary sheet winch	electric 2 x Lewmar 50STE
Secondary sheet winch	2 x Lewmar 46ST
Halyard winches	2 x Lemwar 40ST
Extra info	German sheeting for main



BAVARIA 47 CRUISER



BAVARIA 47 CRUISER



BAVARIA 47 CRUISER



BAVARIA 47 CRUISER



BAVARIA 47 CRUISER



BAVARIA 47 CRUISER



BAVARIA 47 CRUISER



BAVARIA 47 CRUISER



BAVARIA 47 CRUISER



BAVARIA 47 CRUISER



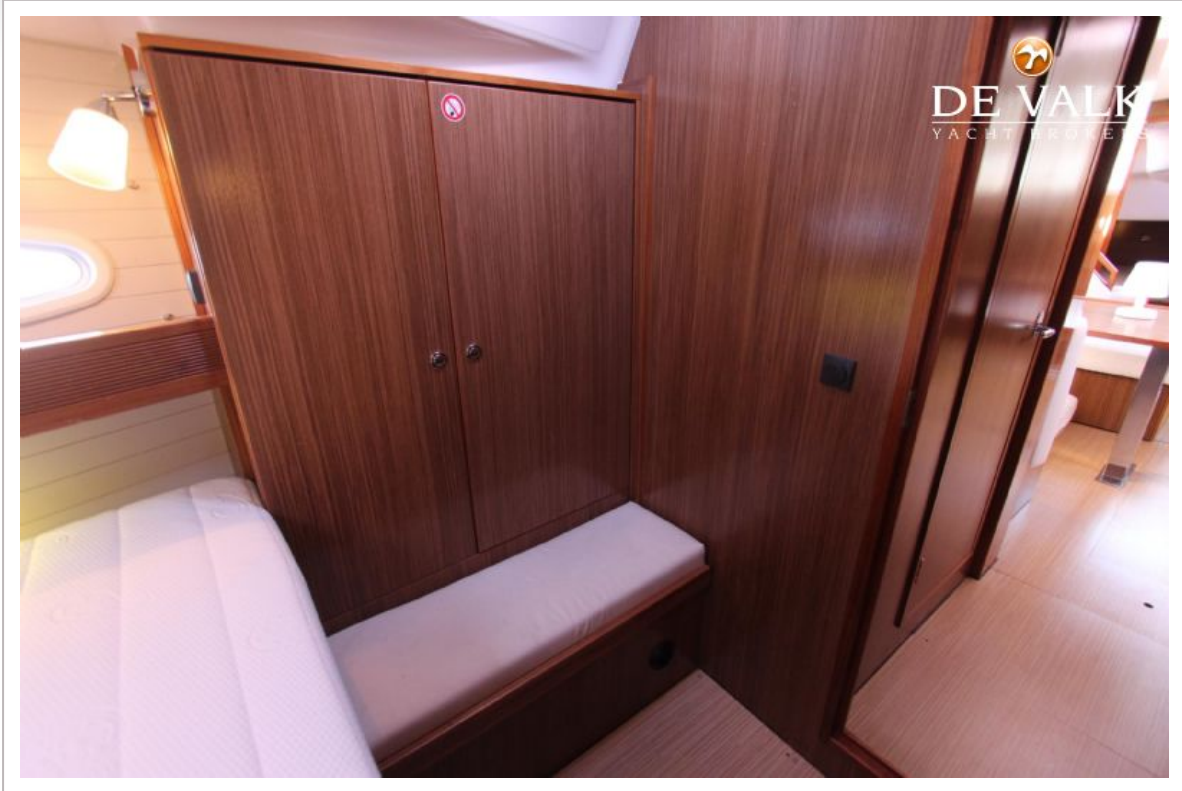
BAVARIA 47 CRUISER



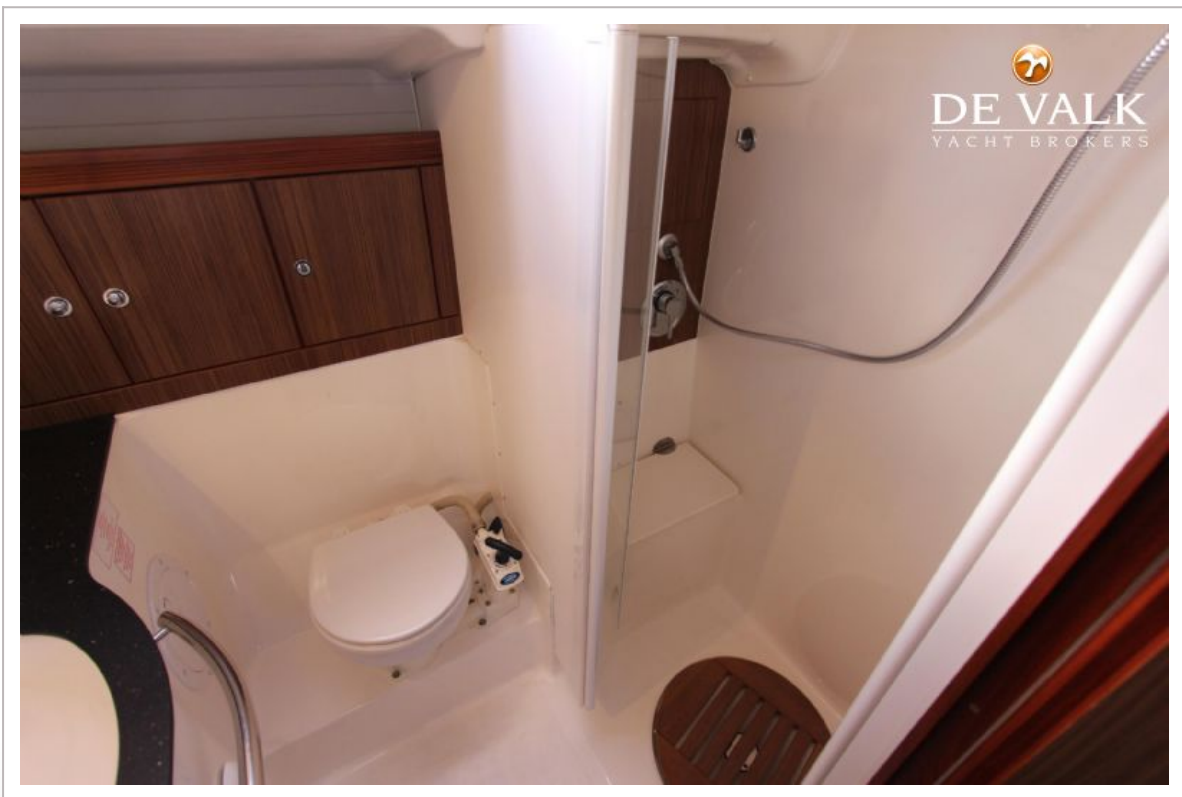
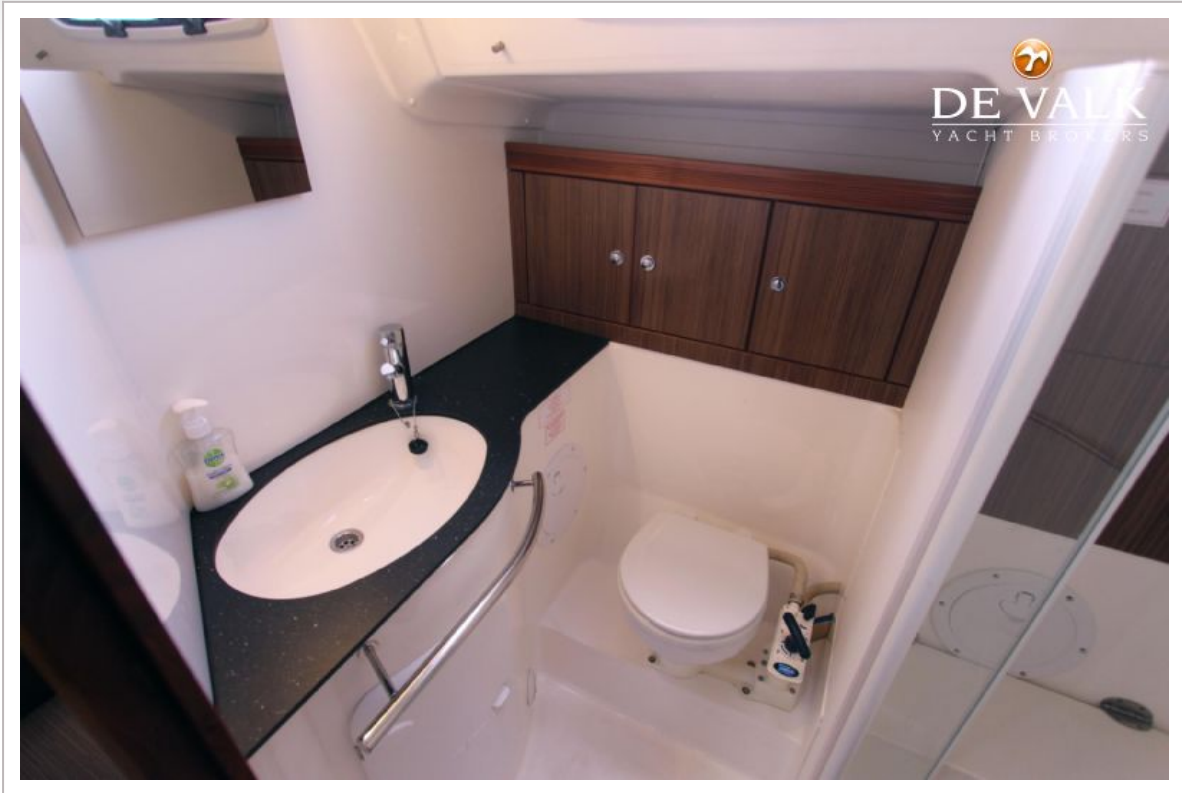
BAVARIA 47 CRUISER



BAVARIA 47 CRUISER



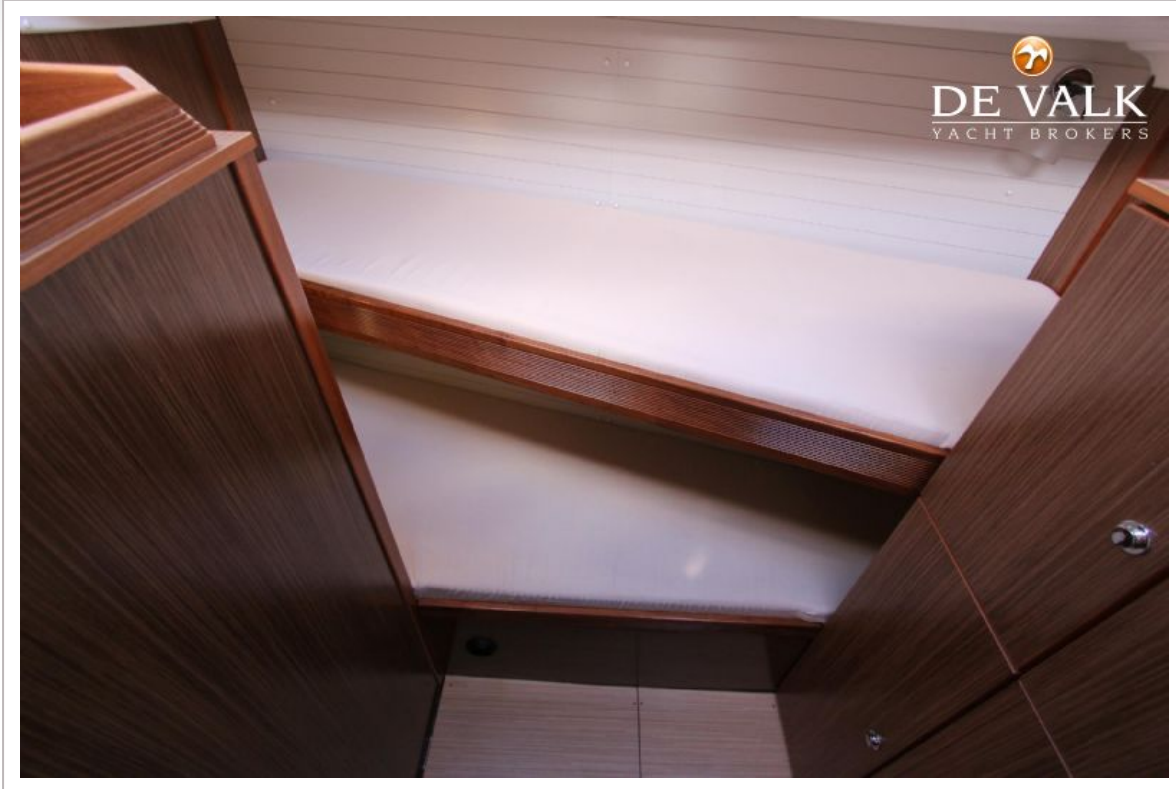
BAVARIA 47 CRUISER



BAVARIA 47 CRUISER



BAVARIA 47 CRUISER



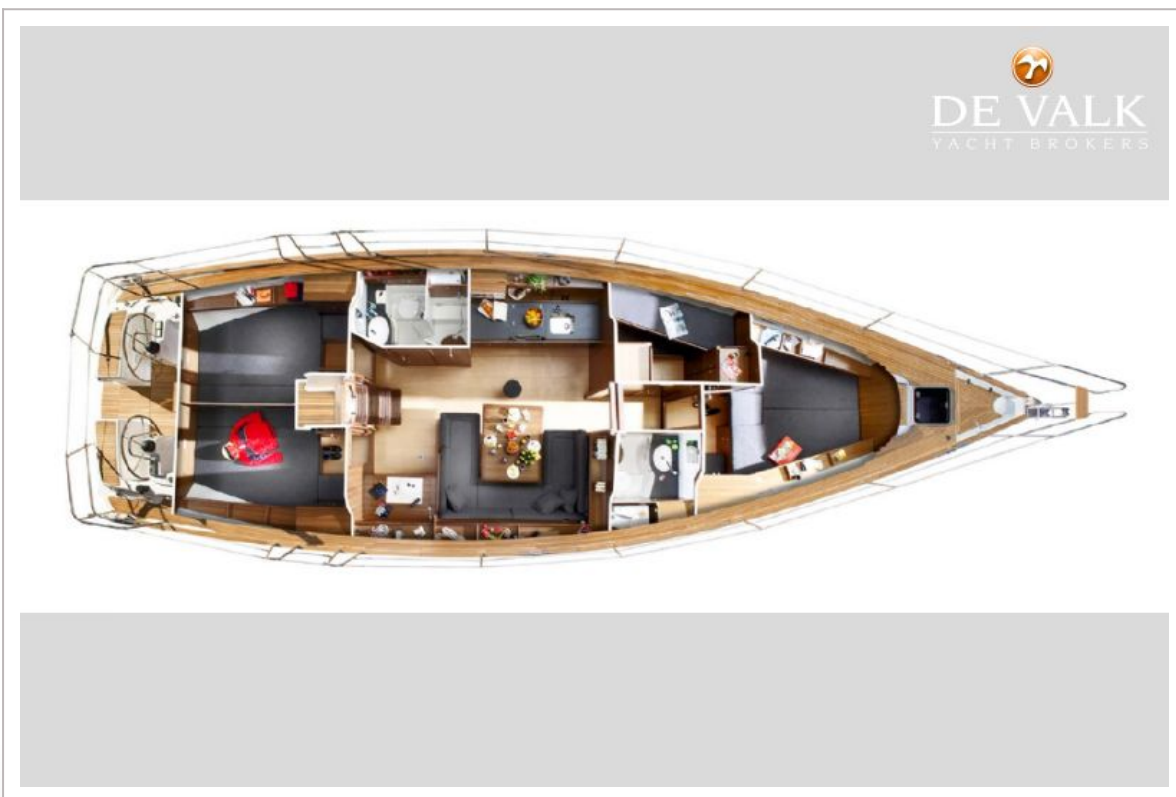
BAVARIA 47 CRUISER



BAVARIA 47 CRUISER

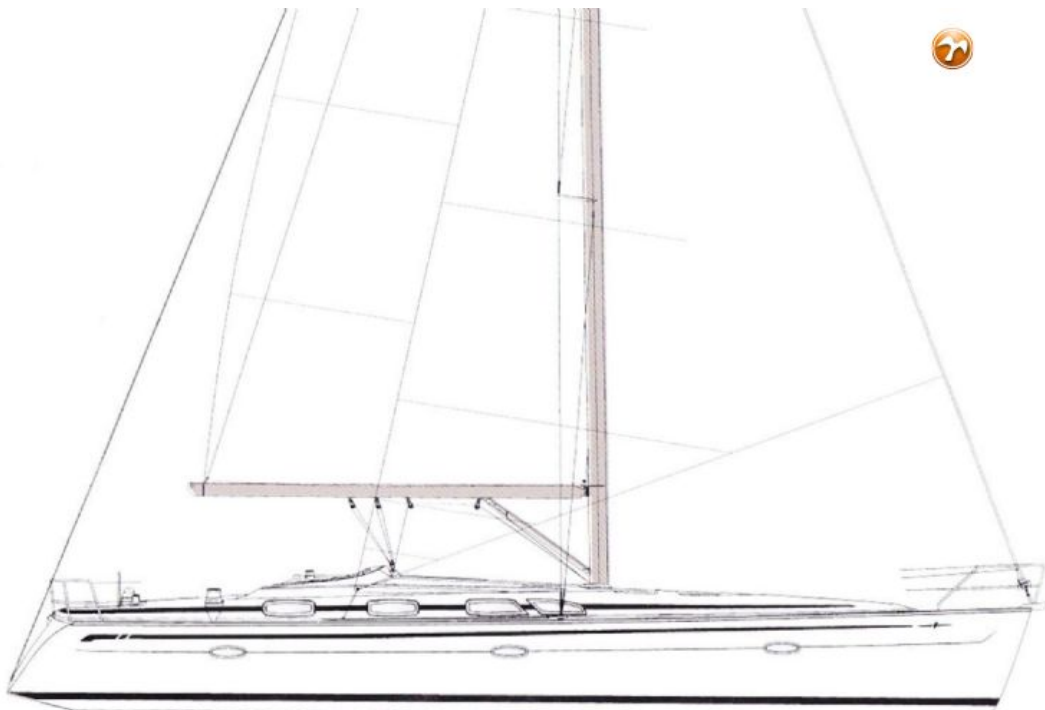
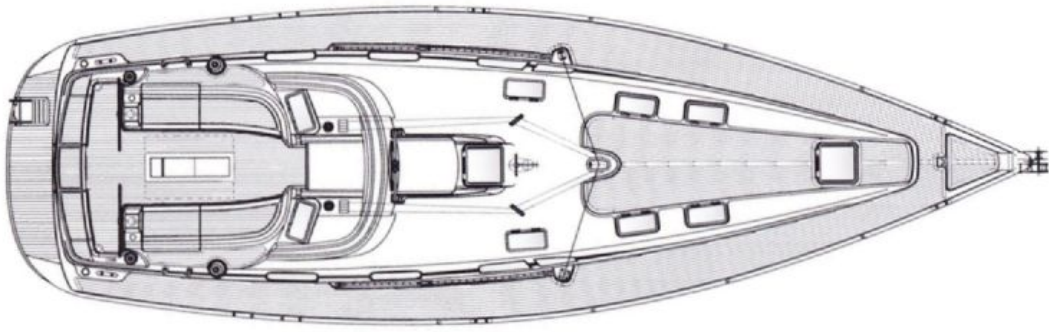


BAVARIA 47 CRUISER

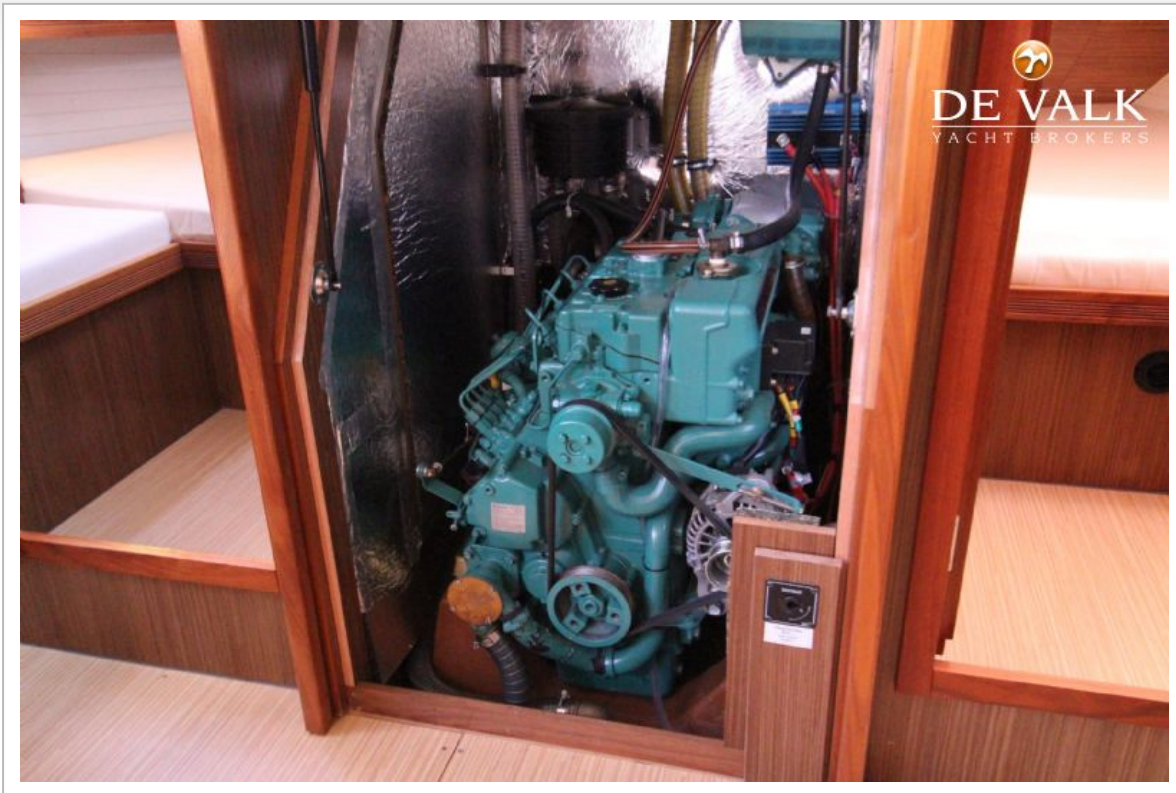


BAVARIA 47 CRUISER


DE VALK
YACHT BROKERS



BAVARIA 47 CRUISER



BAVARIA 47 CRUISER

