



ALMTRAWLER 1320 AD

ALMTRAWLER 1320 AD

BROKER'S COMMENTS

Distinctive Dutch built steel Trawler motor yacht with open cockpit and fly bridge. Conceived and built by the quality Alm-Werkendam Yard, this Almtrawler 1320AD has some very clever and nice details. One level walk around on deck, one level salon, galley and pilothouse and three separate cabins. Large owner cabin forward, twin guest cabins and twin bathrooms. Comfortable salon and pilothouse with 360 degree panoramic view of the surroundings. Access to the open cockpit via triple opening doors and side doors in the pilothouse. Access to fly bridge via inside door.

Marc Weijenberg

SPECIFICATIONS

Dimensions	14.95 x 4.35 x 1.35 (m)	Builder	Jachtwerf De Alm
Built	1994	Cabins	3
Material	Steel	Berths	5
Engine(s)	1 x Perkins M215C diesel	Hp/Kw	215.00 (hp), 158.03 (kw)
Asking price	sold (VAT)	Lying	elsewhere / Not at sales office

CONTACT

Sales office	De Valk Sint Annaland B.V.	Telephone	+31 (0)166 601 000
Address	Koelhuisweg 4 4697 RM Sint Annaland NL	E-mail	sintannaland@devalk.nl

DISCLAIMER

These particulars are given in good faith as supplied but cannot be guaranteed.



GENERAL

Model	ALMTRAWLER 1320 AD
Type	motor yacht
LOA (m)	14,95
Beam (m)	4,35
Draft (m)	1,35
Air draft (m)	3,60
Headroom (m)	1,95
Year built	1994
Builder	Jachtwerf De Alm
Country	The Netherlands
Designer	Jachtwerf De Alm
Displacement (t)	25
CE norm	NA
Hull material	steel
Hull colour	white
Hull thickness (mm)	5-10mm
Hull shape	hard chine
Keel type	long keel
Superstructure material	steel
Superstructure (mm)	4mm
Rubbing strake	stainless steel
Deck material	steel
Deck finish	non-skid paint
Cockpit deck finish	teak
Window frame	aluminium Gebo
Window material	tempered glass
Deckhatch	yes
Portholes	Gebo
Insulation	glasswool
Flybridge	yes



ALMTRAWLER 1320 AD

Flybridge cover	yes
Mast can be lowered	manual
Fuel tank (litre)	steel 1800
Fuel tank 2 (litre)	steel 400 (genset + heating)
Level indicator (fuel tank)	(defect)
Freshwater tank (litre)	steel 1000
Blackwater tank (litre)	350
Blackwater tank extraction	deck extraction + pump
Wheel steering	hydraulic
Outside helm position	hydraulic
More info on paintwork	(2012)
Extra info	Flyscreens for portholes Ocean Air blinde for ownerscabin
Extra info	Headway mast down 3,90 mtr headway parts dismantled 3,60 mtr
Extra info	(dinghy + outboard not included)

ACCOMMODATION

Cabins	3
Berths	5
Interior	teak
Floor	woodprint
Aft deck	yes
Pilot house/deck saloon	yes
Headroom saloon (m)	1,95-2,00
Heating	central heating Kablola HR400 (2017, 220v)
Dinette	yes
Opening door to aft deck	3 x
Galley	yes
Countertop	plastic
Sink	1 x stainless steel
Cooker	2 flame 220v Ceran



ALMTRAWLER 1320 AD

Extractor	220v
Microwave/oven combi	Gerratic (220v)
Fridge	(220v, 2017)
Hot water system	on central heating
Water pressure system	electrical
Owners cabin	double bed
Bed length (m)	2,00 x 1,45
Wardrobe	hanging/drawers/shelves
Bathroom	en suite I
Toilet	en suite
Toilet system	electric
Wash basin	in the bathroom
Shower	separate
Guest cabin 1	single bed
Bed length (m)	2,00 x 0,80
Wardrobe	hanging and shelves
Guest cabin 2	double bed
Bed length (m)	2,00 x 1,40
Wardrobe	hanging and shelves
Bathroom	shared II
Toilet	shared
Toilet system	electric
Wash basin	in the bathroom

MACHINERY

No of engines	1
Make	Perkins
Type	M215C
HP	215
kW	158,03
Fuel	diesel



ALMTRAWLER 1320 AD

Year installed	1994
Maximum speed (kn)	8,5
Cruising speed (kn)	7
Consumption (l/hr)	6
Engine hours	2900
Engine cooling system	freshwater heat exchanger
Drive	shaft
Shaft seal	Grease stuffingbox
Engine controls	bowden cable
Gearbox	Hurth HSW
Bowthruster	hydraulic Hydrosta 15hp
Sternthruster	hydraulic Hydrosta 9hp
Exhaust	watercooled
Thrust bearing	Aquadrive
Propeller type	fixed
Propeller blades	4
Propeller shaft material	stainless steel
Shaft lubrication	water
Electric bilge pump	3 x
Electrical installation	24v/220v
Generator	wet exhaust EMI II MDS-102 (4kW)
Running hours generator	425
Start battery	2 x 210amp
Service battery	2 x 210amp (2019)
Generator battery	yes
Battery monitor	yes
Battery charger	Victron 24v/75amp + 20amp
Inverter	Mastervolt 24v/1500watt
Diode battery combiners	yes
Shorepower	with cable
Extra info	Separ filter system
Extra info	Air-compressor



Extra info

Hydrosta hydraulic pack

NAVIGATION

Compass

Silva 100

Electric compass

Autohelm ST50

Depth sounder/log

Autohelm ST50 Tridata

VHF

Shipmate RS8300 + Navman 7100

Autopilot

Autohelm ST7000

Radar

Furuno 1832

Plotter/GPS

Garmin 4012 (2017)

Electronic chart(s)

1 x

AIS transponder

(2017, not connected)

Camera

Rearview, display

Navigation lights

yes

Searchlight

yes

EQUIPMENT

Bathing platform

yes

Boarding ladder

stainless steel

Transom door

yes

Deck shower

yes

Anchor

Pool

Windlass

electrical Vetus 24v

Deck wash

yes

Sea railing

stainless steel

Grab rail (superstructure)

stainless steel

Railing side opening gates

2 x

Pushpit

yes

Pulpit

yes

Lifebuoy

yes

Wiper

3 x (2 x wash)



ALMTRAWLER 1320 AD

Horn	electric
Fenders	+ fender-holders
Mooring lines	yes
TV	yes
Radio-cd player	yes
Speakers in salon	yes
Clock - barometer	yes
Fire extinguisher	(expired)



ALMTRAWLER 1320 AD



ALMTRAWLER 1320 AD



ALMTRAWLER 1320 AD



ALMTRAWLER 1320 AD



ALMTRAWLER 1320 AD



ALMTRAWLER 1320 AD



ALMTRAWLER 1320 AD



ALMTRAWLER 1320 AD



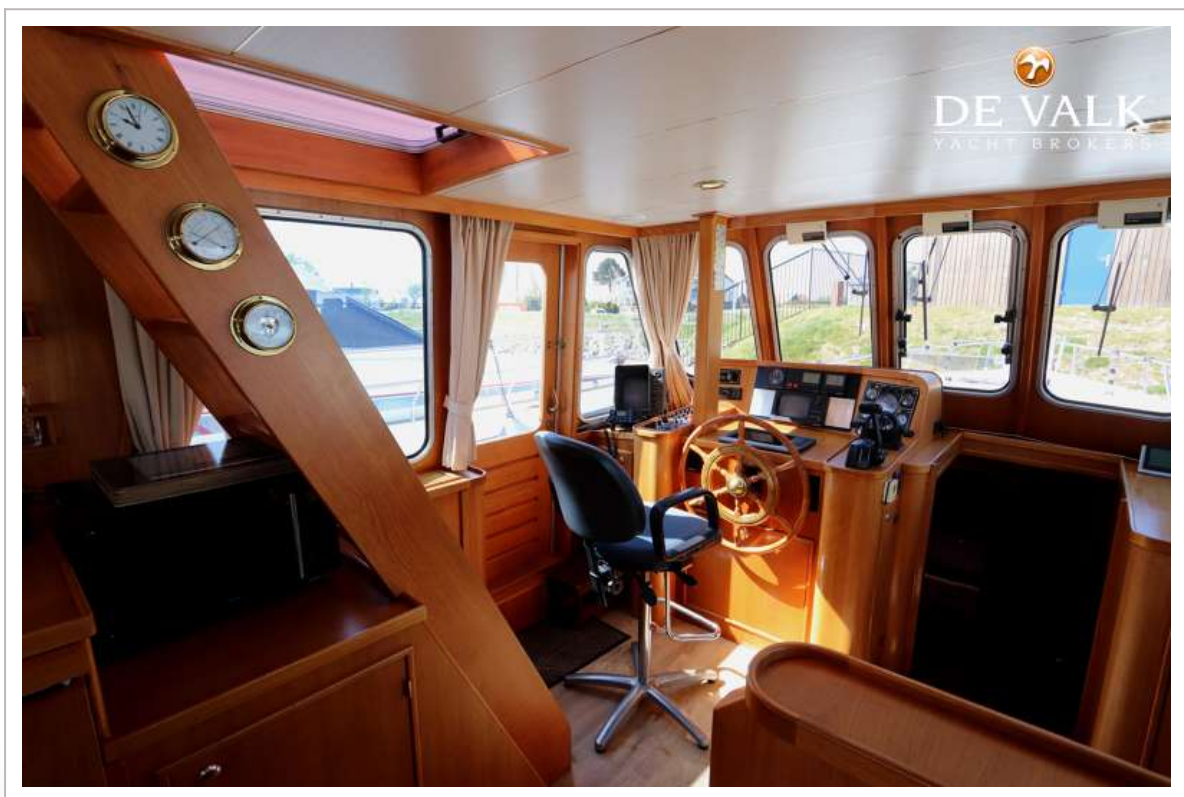
ALMTRAWLER 1320 AD



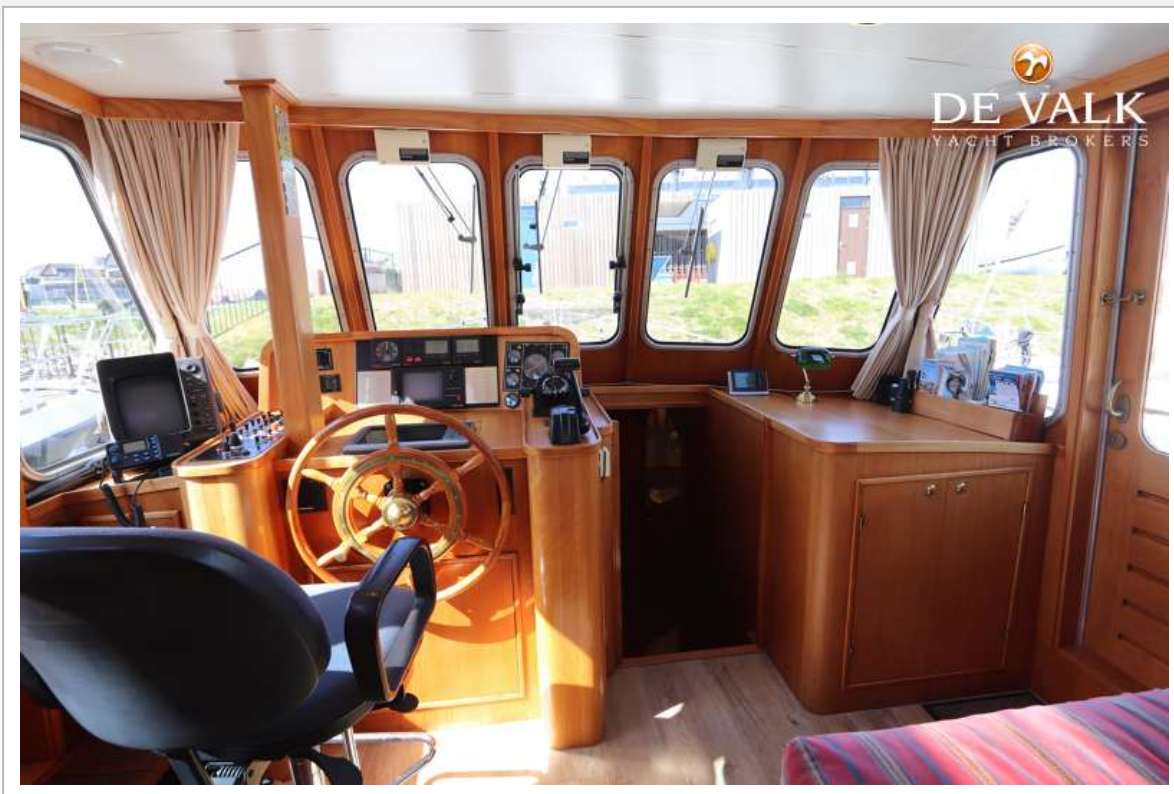
ALMTRAWLER 1320 AD



ALMTRAWLER 1320 AD



ALMTRAWLER 1320 AD



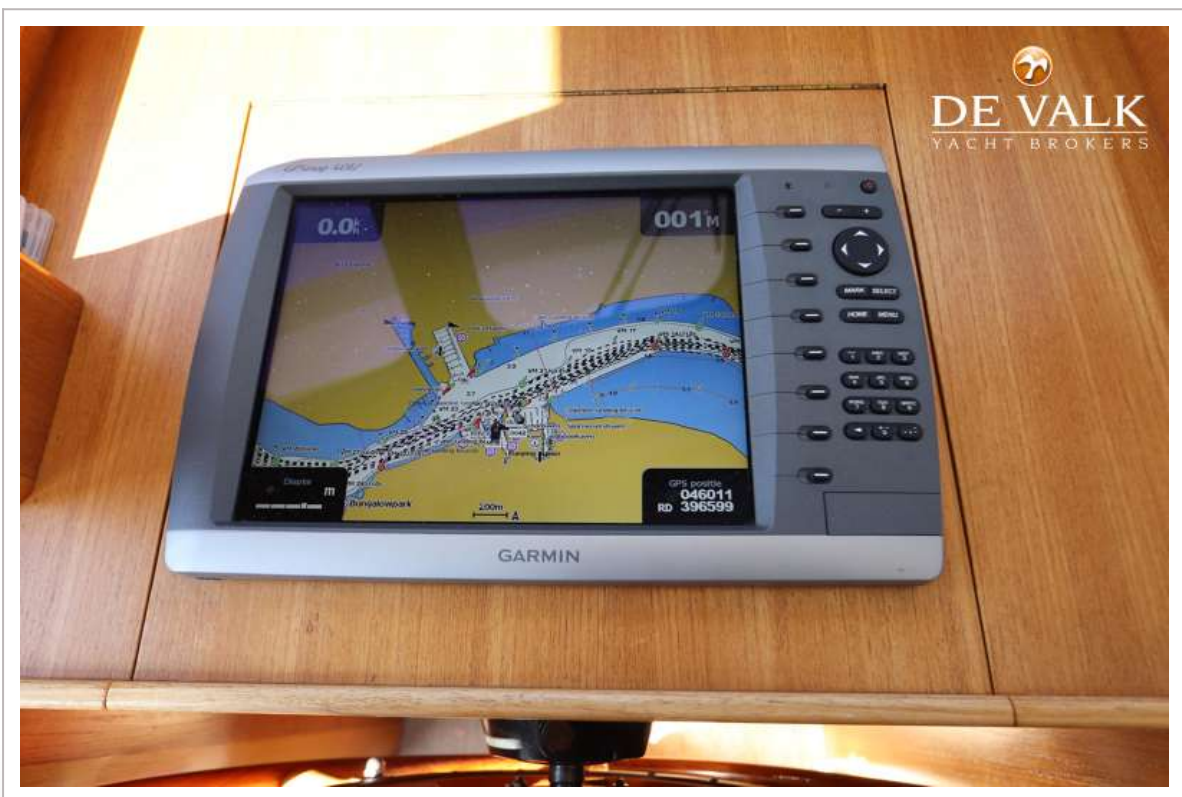
ALMTRAWLER 1320 AD



ALMTRAWLER 1320 AD



ALMTRAWLER 1320 AD



ALMTRAWLER 1320 AD



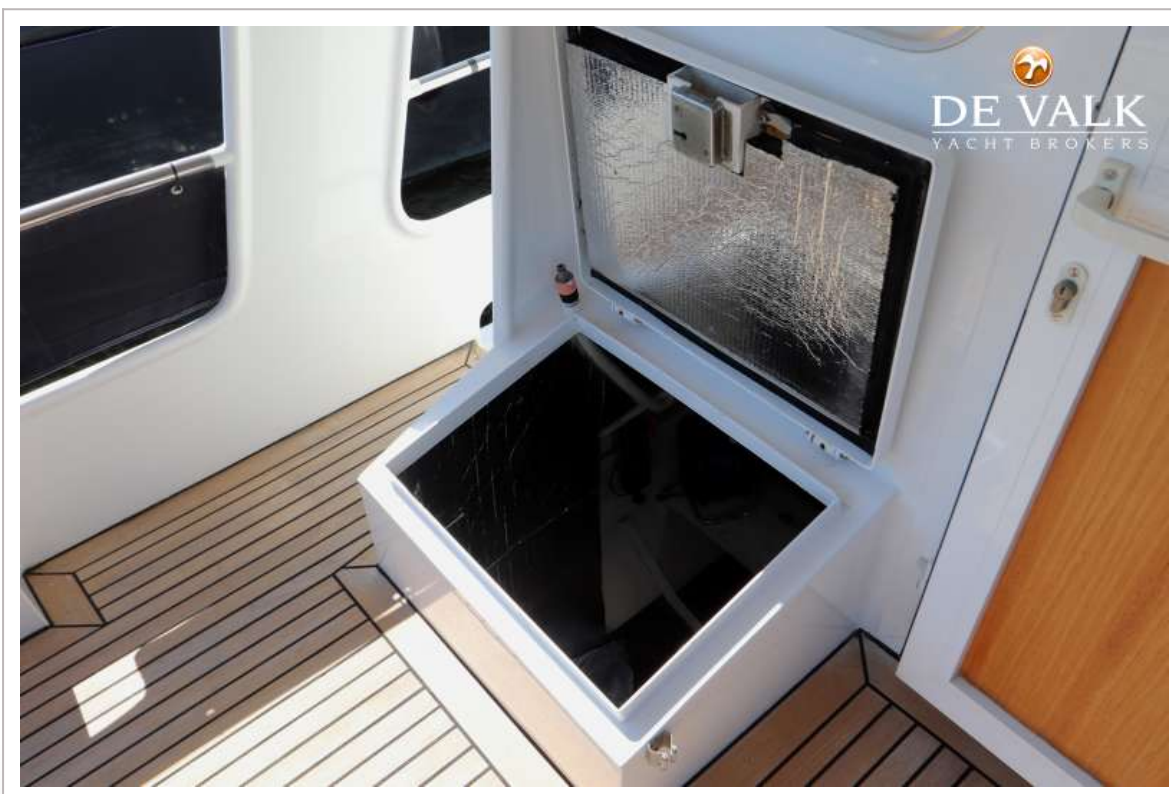
ALMTRAWLER 1320 AD



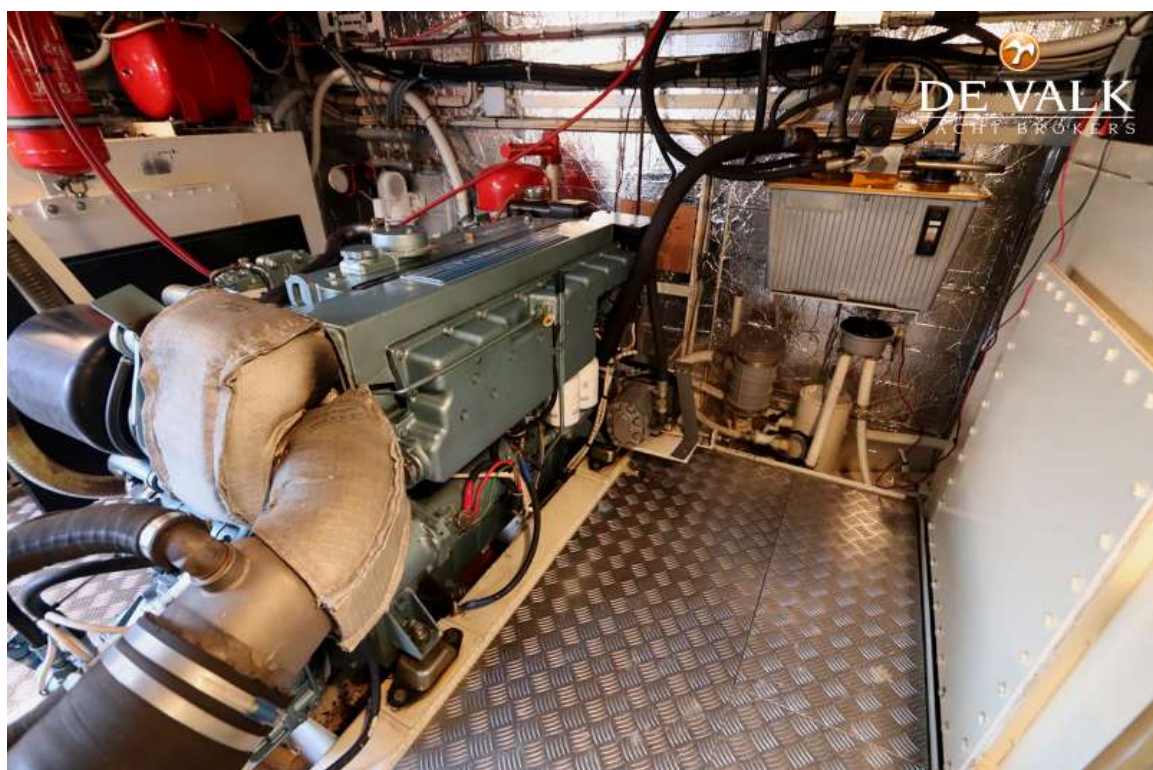
ALMTRAWLER 1320 AD



ALMTRAWLER 1320 AD



ALMTRAWLER 1320 AD



ALMTRAWLER 1320 AD



