



## X-YACHTS XC 45

# X-YACHTS XC 45

## BROKER'S COMMENTS

2025 serviced and benefit a spectacular price drop! Just take your magnifying glass to inspect this, almost like new looking vessel. She has been maintained punctually and extremely precise. Purely used as a family cruiser, truly almost everything about her is correct. Her draft of just 1.80 gives her an incredibly spacious cruising range. Nice set of sails, these are not new but will last for a while. Many updates in recent years; including newly installed generator, hatches, cockpit tent, spray hood, batteries. Beautiful maintained teak deck, and inside you can enjoy an almost new interior.

*Willem Koopmans*

## SPECIFICATIONS

<b>Dimensions</b>	13.86 x 4.32 x 1.80 (m)	<b>Builder</b>	X-Yachts
<b>Built</b>	2009	<b>Cabins</b>	3
<b>Material</b>	GRP	<b>Berths</b>	6
<b>Engine(s)</b>	1 x Volvo Penta D2 diesel	<b>Hp/Kw</b>	75.00 (hp), 55.20 (kw)
<b>Asking price</b>	sold (VAT )	<b>Lying</b>	contact sales office

## CONTACT

<b>Sales office</b>	De Valk Costa Blanca	<b>Telephone</b>	+34 96 50 21 569
<b>Address</b>	Costa Blanca Region 03730 Javea Alicante ES	<b>E-mail</b>	costablanca@devalk.nl

## DISCLAIMER

These particulars are given in good faith as supplied but cannot be guaranteed.



# X-YACHTS XC 45

## GENERAL

Model	X-YACHTS XC 45
Type	sailing yacht
LOA (m)	13,86
LWL (m)	12,76
Beam (m)	4,32
Draft (m)	1,80
Air draft (m)	23,00
Air draft min (m)	21,64
Headroom (m)	2,00
Year built	2009
Launched	2009
Builder	X-Yachts
Country	Denmark
Designer	Niels Jeppessen
Displacement (t)	13,22
Ballast (tonnes)	5,74
CE norm	A
Hull material	GRP
Hull colour	off-white
Hull shape	round-bilged
Keel type	fin keel
Bilge keels	yes
Superstructure material	GRP
Rubbing strake	aluminum
Deck material	GRP
Deck finish	teak Superb maintained
Superstructure deck finish	teak Superb maintained
Cockpit deck finish	teak Superb maintained
Antifouling (year)	Feb 2025 plus new anodes
Dorades	Chrome



# X-YACHTS XC 45

Window frame	aluminium
Window material	polycarbonate
Deckhatch	All new 2024
Fuel tank (litre)	stainless steel 400, under floor
Level indicator (fuel tank)	yes
Fuel daytank (litre)	stainless steel 40 (ca.), installed just behind the engine, makes 440 in total
Freshwater tank (litre)	stainless steel 613 (ca.) level indicator over separate tanks
Level indicator (freshwater)	yes
Blackwater tank (litre)	stainless steel 2x tank
Wheel steering	Jefa, double
Outside helm position	yes
Emergency tiller	yes
More info on hull	Rhiwax 3 fase treated
Extra info	Hull, deck, bimini, etc. all looks like almost new

## ACCOMMODATION

Cabins	3
Berths	6
Interior	teak Warm teak and modern white wall finish, alcantara upholstery
Layout	Owner plus 2 guest cabins
Floor	teak and holly
Headroom saloon (m)	2
Heating	diesel ducted hot air Eberspacher
Navigation center	yes
Chart table	yes
Aft Cabin	Double
Dinette	yes
Sliding door to cockpit	Door goes down
Galley	yes
Countertop	Duropol Off white



# X-YACHTS XC 45

Sink	stainless steel Double, 1 plus 1/2
Cooker	calor gas ENO, 3 burner
Oven	calor gas ENO
Microwave	ENO
Fridge	yes
Hot water system	220V + engine Boiler
Water pressure system	electrical
Owners cabin	French bed
Bed length (m)	2,1
Wardrobe	hanging/drawers/shelves
Bathroom	en suite
Toilet	en suite
Toilet system	electric
Wash basin	in the bathroom
Shower	en suite With shower door, separating shower from bathroom
Guest cabin 1	double bed
Bed length (m)	2,10
Wardrobe	hanging and shelves
Bathroom	shared
Toilet	shared
Toilet system	electric
Wash basin	in the bathroom
Shower	shared
Guest cabin 2	double bed
Bed length (m)	2,10
Wardrobe	hanging and shelves
Bathroom	shared
Toilet	shared
Toilet system	electric
Wash basin	in the bathroom
Shower	shared
Extra info	2 separate lpg buttons, easy to fill yourself at fuel station.



## Extra info

Led lights

## MACHINERY

No of engines	1
Make	Volvo Penta
Type	D2
HP	75
kW	55.20
Fuel	diesel
Year installed	2009
Year of overhaul	2019 new gearbox & turbo and intercooler cleaned/ redone
Maximum speed (kn)	8,6
Cruising speed (kn)	7
Consumption (l/hr)	3,5
Range (nm)	900
Engine hours	1650
Engine cooling system	freshwater heat exchanger
Drive	sail-drive
Saildrive seal	Replaced 2019, invoice available
Engine controls	bowden cable
Gearbox	mechanical
Bowthruster	electric Retractable MAX power
Exhaust	watercooled
Propeller type	folding
Propeller blades	3
Manual bilge pump	yes
Electric bilge pump	yes
Electrical installation	12/24/228
Generator	New installed Paguro 4 kva with Yanmar engine
Running hours generator	New, only 19 hours
Batteries	Victron gel batteries



Start battery	Led aced start
Service battery	4x 110 Amp Victron gel battery, new 2023
Generator battery	Led aced start
Bowthruster battery	Victron gel 2021
Windlass battery	Victron 110 amp gel new 2021 for electrical winches
Battery monitor	yes
Battery charger/inverter	Victron Phoenix 24/1600/40
Shorepower	with cable
Extra info	Victron mains manager shorepower/ inverter / generator switch

## NAVIGATION

Compass	Silva
Electric compass	On pilot
Multi control display	2 x ST 290 Raymarine
Depth sounder	yes
Log	yes
Windset	Raymarine ST 290 series
Repeater	Raymarine ST 290 series close hauled
VHF	Raymarine DSC
Autopilot	Raymarine ST 290 series
Rudder angle indicator	On pilot
Radar	Raymarine HD model RD424
GPS	yes
Radar/plotter	Raymarine W140 new 2018
Personal computer	Nuevo 19 inch screen on Mac mini PC
PC connection	yes
Wifi antenna	yes
AIS transponder	yes
Navigation lights	yes

## EQUIPMENT



# X-YACHTS XC 45

Fixed windscreen	yes
Sprayhood	New 2024
Sprayhood with grab rail	yes
Cockpit cover	2020 winter tent based on old sprayhood (all complete)
Bimini	yes
Cockpit cushions	Grey
Cockpit table	Including cover
Bathing platform	Electric
Boarding ladder	yes
Deck shower	Warm/cold
Anchor	Delta
Anchor chain	50 mtr
Chain counter	yes
Other ground tackle	1 Delta plus
Windlass	Quick 1500 Watt
Davits	Simpson
Life raft	container Seago, new 2020 out of service date
Life raft (pers)	6
Last life raft survey	2020
Fenders	yes
Mooring lines	yes
Spare parts	Service package for engine
TV	New Samsung 55 inch Wifi
Radio-cd player	Bose sound system
iPod connection	yes
Surround Sound System	yes
Sub-woofer	yes
Cockpit speakers	Bose
Speakers in salon	Bose
Clock - barometer	yes
Fire extinguisher	yes
Latest extinguisher survey	Needs check





Extinguisher in engine room

Not installed, but small entrance foreseen

## RIGGING

Rigging

fractional Sloop

Standing rigging

Rod

Brand mast

John mast

Material mast

aluminium

Spreaders

3

Keel stepped mast

yes

Mainsail

yes

Mainsail cover

See furling boom

Fully battened mainsail

North sails, Dynema, colour North sails, white in good condition

Furling boom

John mast carbon version

Genoa

North sails, 110% Dynema, colour white in good condition

Code Zero

North sails, with flying furler, colour white

Gennaker

North sails, half winder in condom

Reefing System

main in-boom furling

Backstay adjuster

hydraulic

Boomvang

gasspring

Primary sheet winch

electric Andersen 58ST

Secondary sheet winch

Andersen 46ST

Multifunctional winches

Andersen 46ST, one electric

Spi-pole

On mast



# X-YACHTS XC 45



# X-YACHTS XC 45





## X-YACHTS XC 45

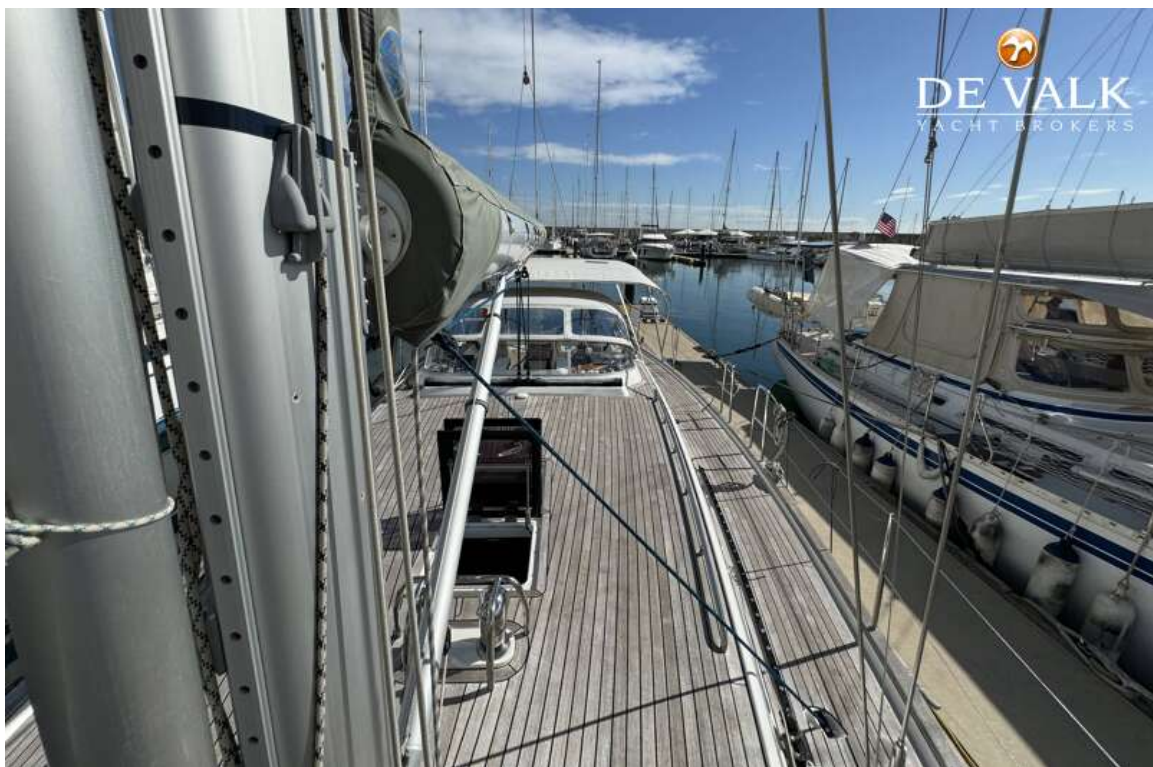


## X-YACHTS XC 45





# X-YACHTS XC 45



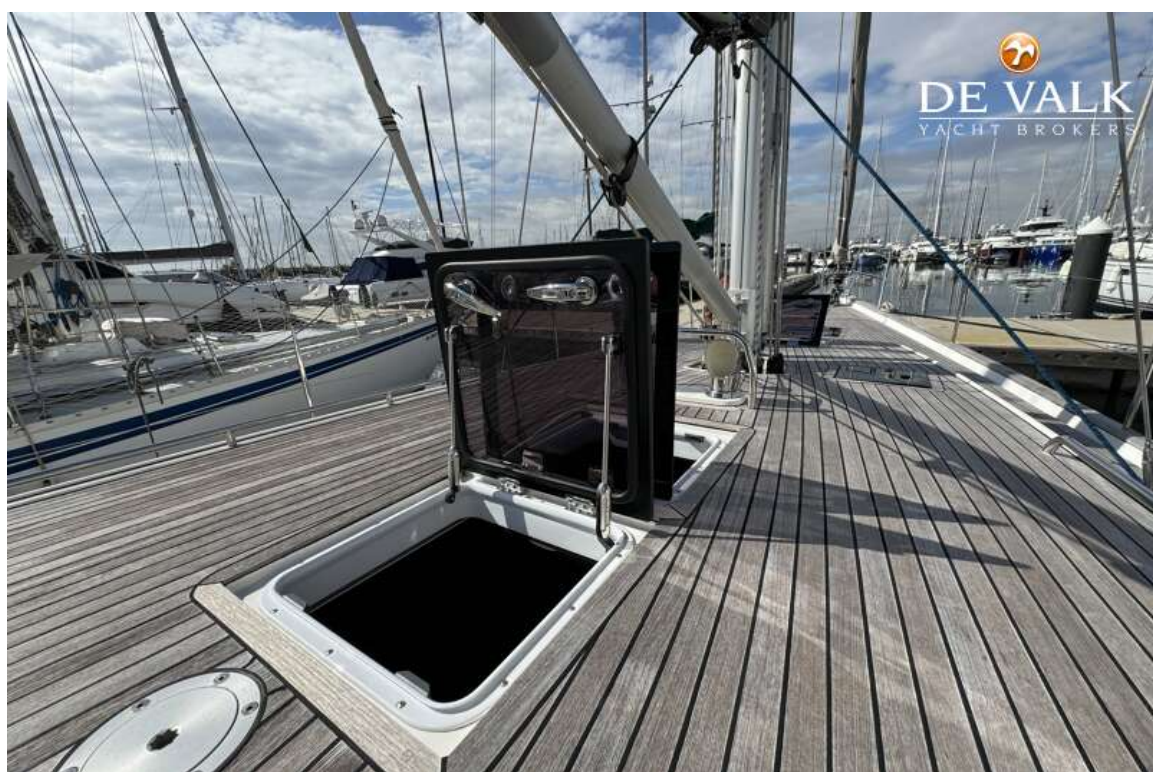


## X-YACHTS XC 45





## X-YACHTS XC 45





## X-YACHTS XC 45



## X-YACHTS XC 45





## X-YACHTS XC 45

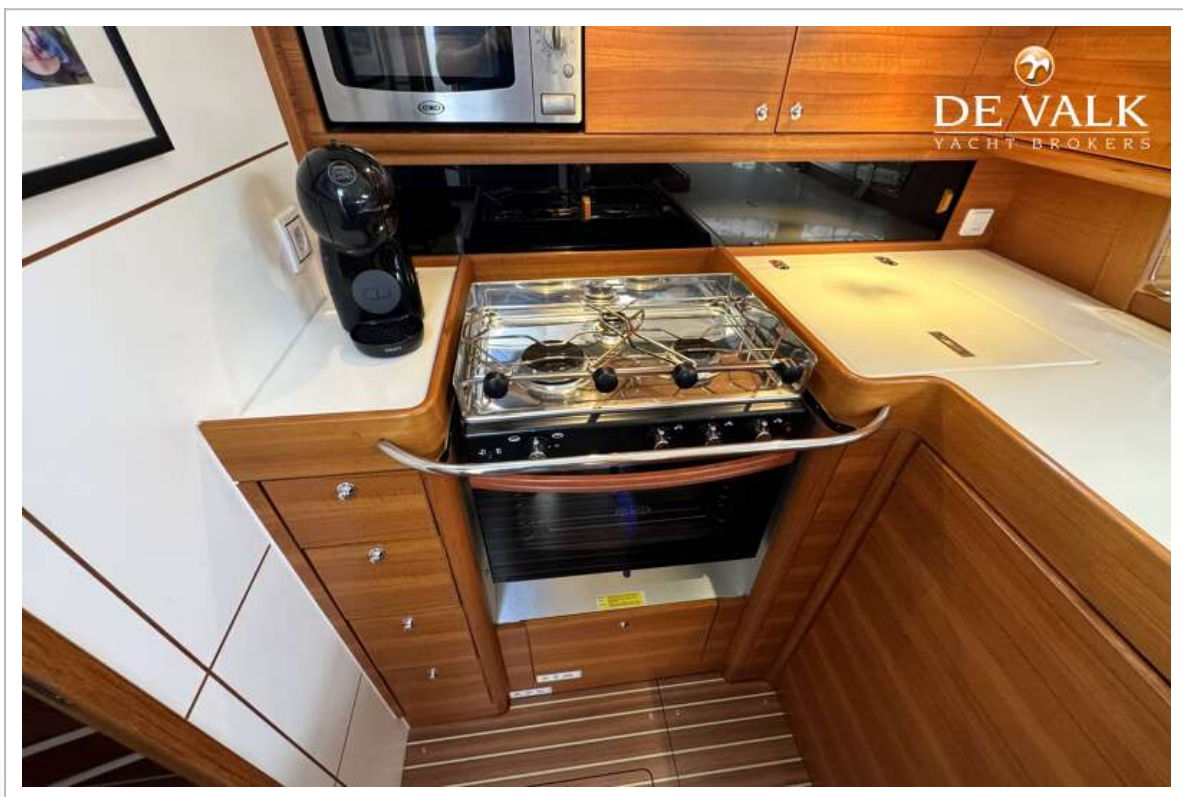
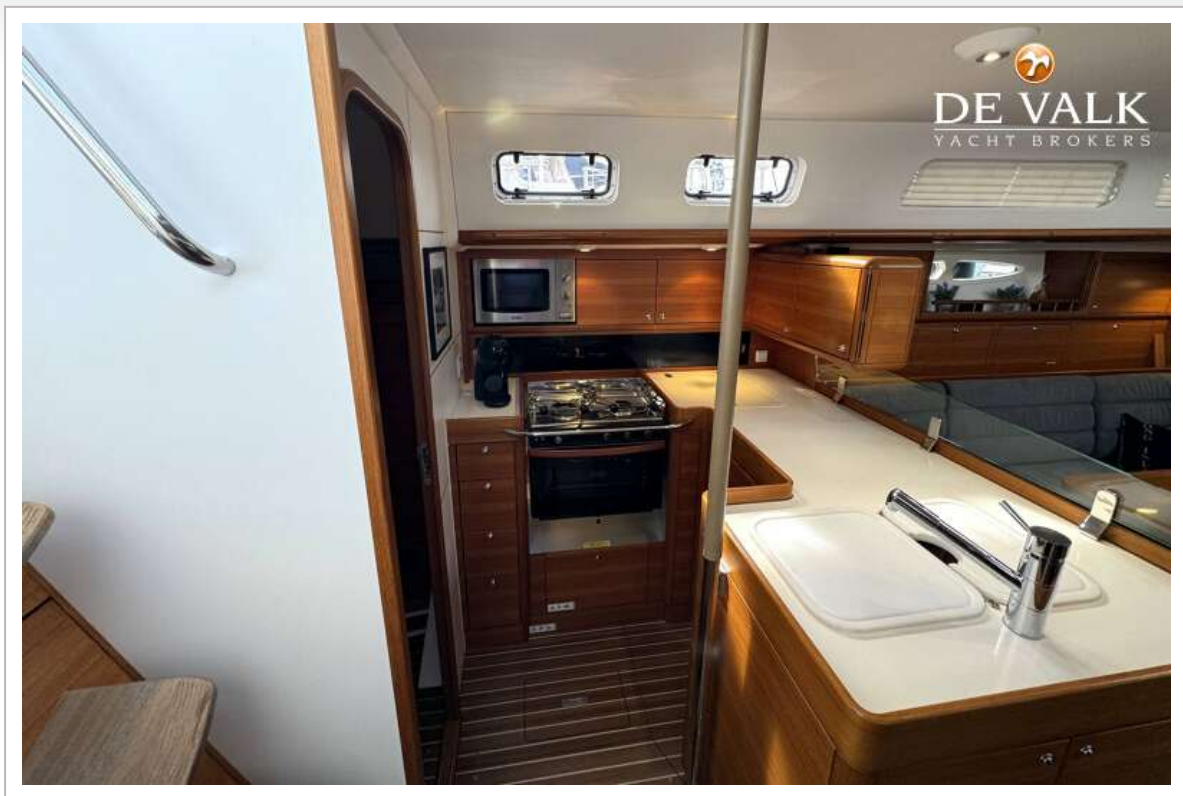


## X-YACHTS XC 45





## X-YACHTS XC 45

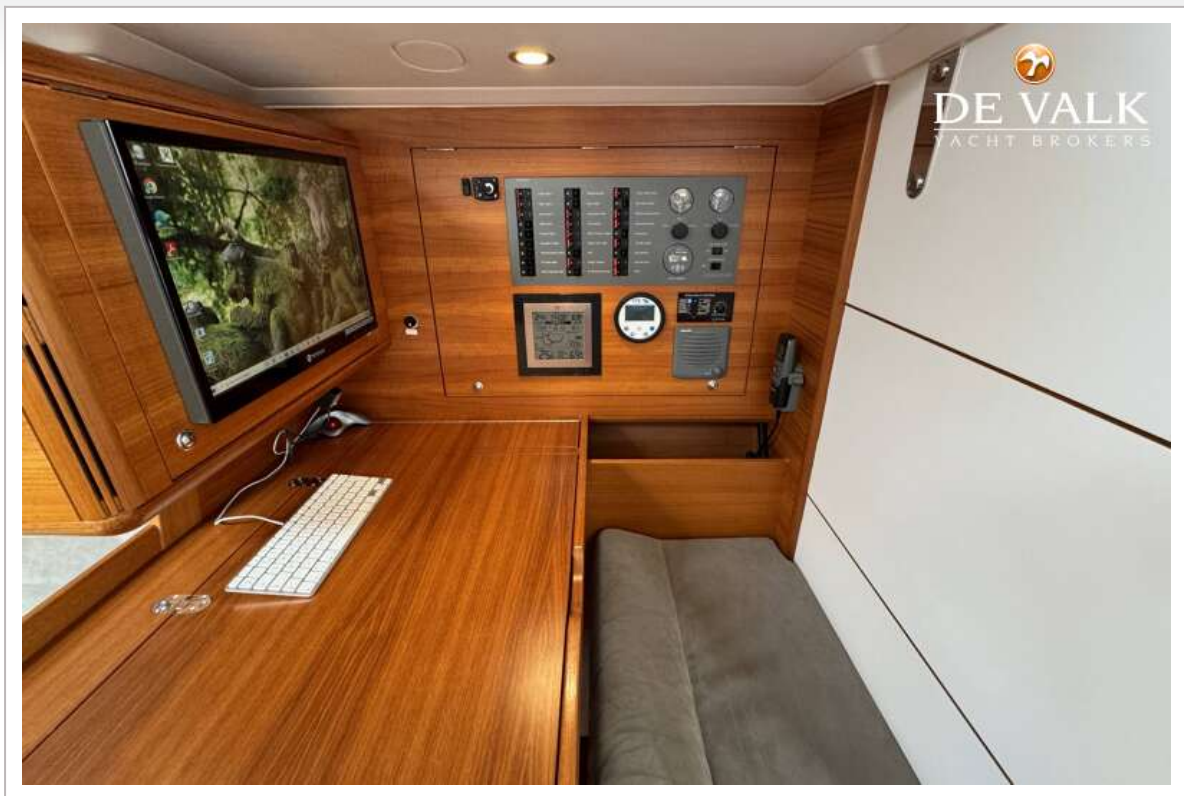


## X-YACHTS XC 45

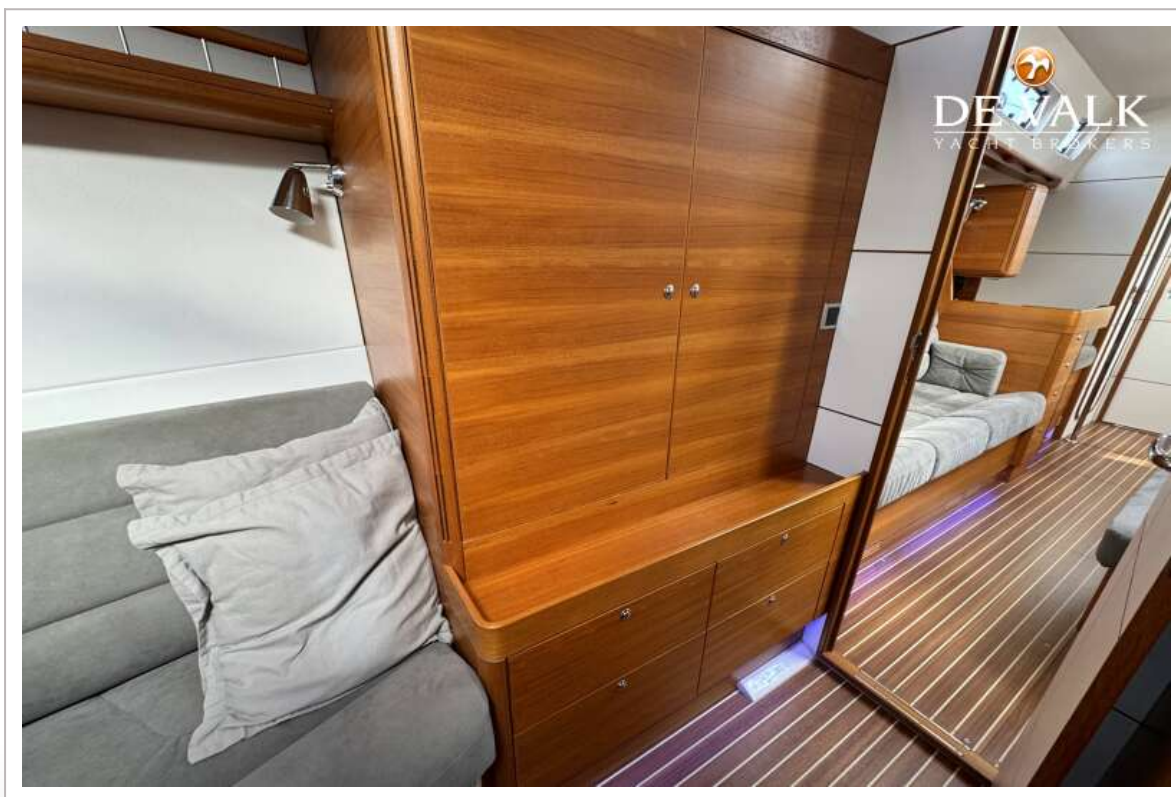




## X-YACHTS XC 45



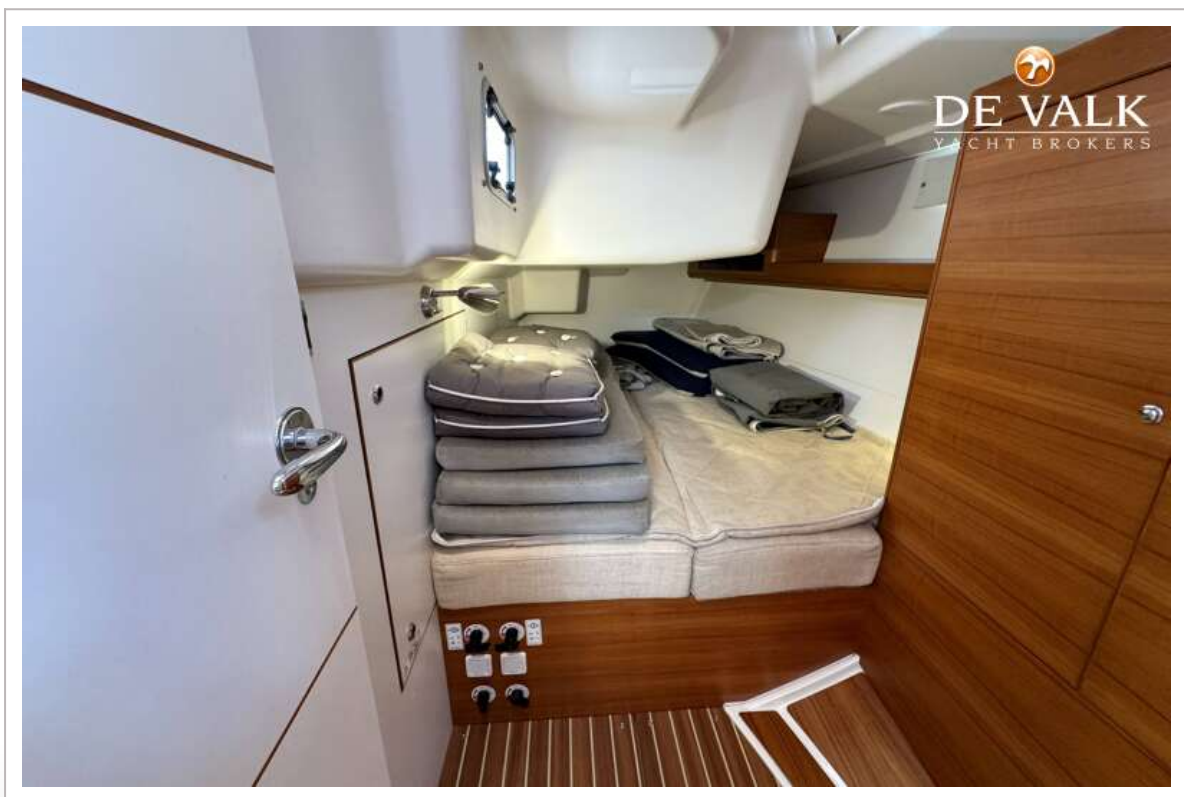
## X-YACHTS XC 45







## X-YACHTS XC 45

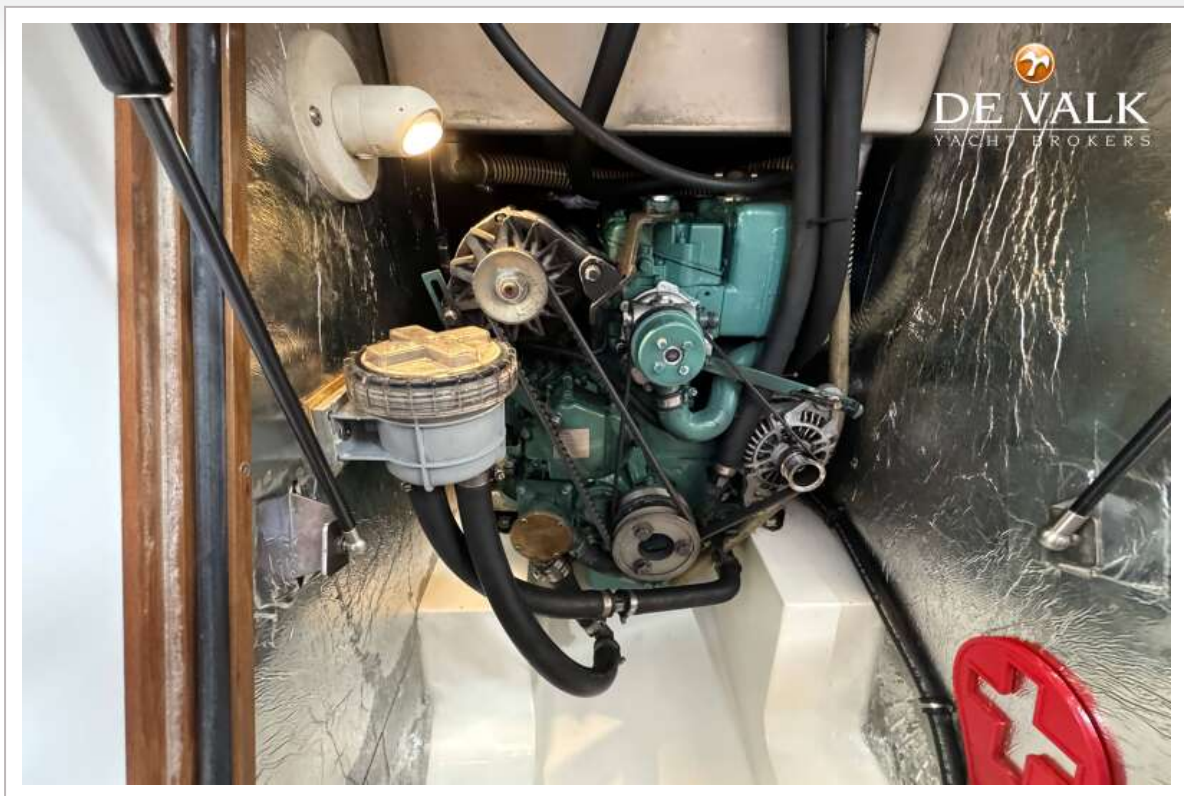


## X-YACHTS XC 45

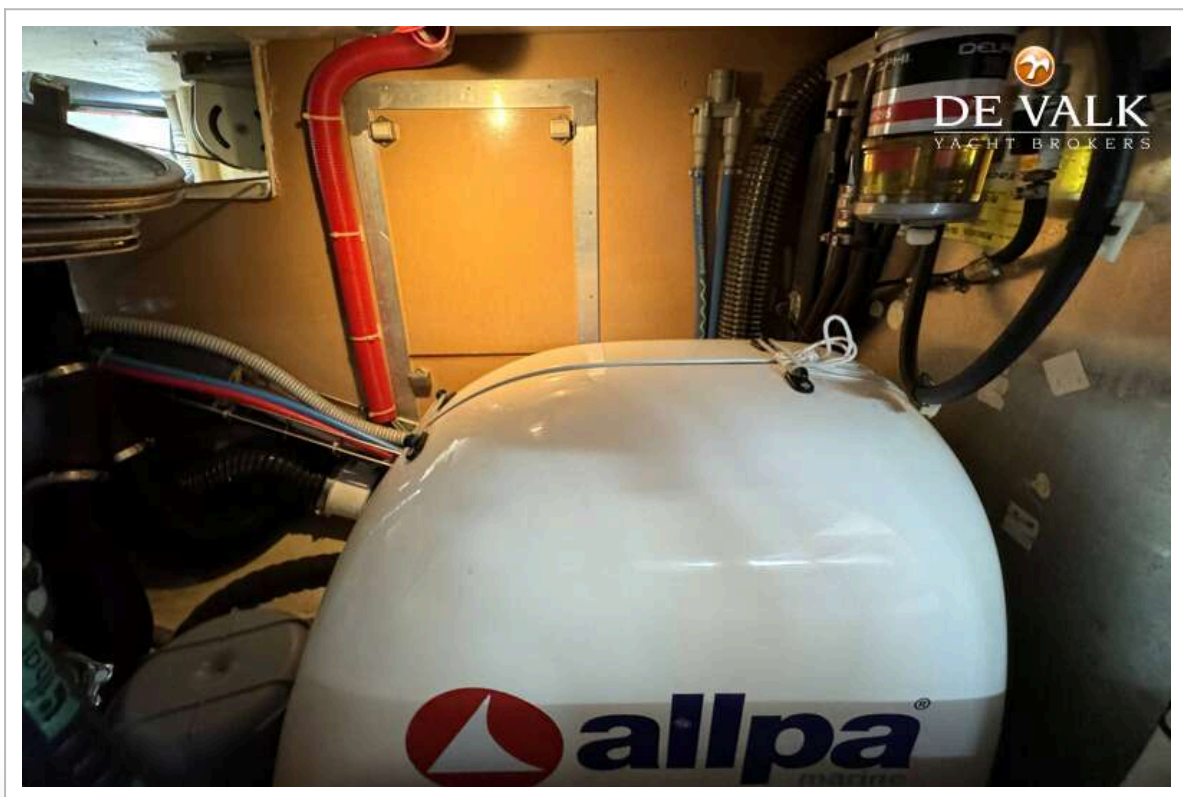




## X-YACHTS XC 45



## X-YACHTS XC 45





# X-YACHTS XC 45

