



DE VALK  
YACHT BROKERS



NELSON WEYMOUTH 32



DE VALK  
YACHT BROKERS

## BROKER'S COMMENTS

This original Nelson Weymouth with open cockpit accounts for the pedigree, safety and seaworthiness these English Pilot Boats will offer. This particular Nelson Weymouth 32 has been completely refitted by her current owner bringing her in the best possible condition she can be. She offers good accommodations to with an enlarged v-bed cabin forward, good bathroom and a panoramic view of the surroundings. Almost any nook & cranny has been used for storage space so you can be onboard for longer periods. You must see this Weymouth 32 to appreciate her at her fullest.

*Marc Weijenberg*

## SPECIFICATIONS

<b>Dimensions</b>	10.20 x 3.40 x 0.85 (m)	<b>Builder</b>	James & Caddy LTD.
<b>Built</b>	1969	<b>Cabins</b>	1
<b>Material</b>	GRP	<b>Berths</b>	6
<b>Engine(s)</b>	2 x Perkins HT6354 diesel	<b>Hp/Kw</b>	2 x 115.00 (hp), 84.53 (kw)
<b>Asking price</b>	sold (VAT )	<b>Lying</b>	elsewhere / Not at sales office

## CONTACT

<b>Sales office</b>	De Valk Sint Annaland B.V.	<b>Telephone</b>	+31 (0)166 601 000
<b>Address</b>	Koelhuisweg 4 4697 RM Sint Annaland NL	<b>E-mail</b>	sintannaland@devalk.nl

## DISCLAIMER

These particulars are given in good faith as supplied but cannot be guaranteed.



## GENERAL

Model	NELSON WEYMOUTH 32
Type	motor yacht
LOA (m)	10,20
Beam (m)	3,40
Draft (m)	0,85
Air draft (m)	2,80
Headroom (m)	1,81
Year built	1969
Builder	James & Caddy LTD.
Country	Great Britain
Designer	John Askham
Displacement (t)	10
Hull material	GRP
Hull colour	blue
Hull shape	deep-V
Bilge keels	yes
Superstructure material	composite
Rubbing strake	rubber
Deck material	composite
Deck finish	non-skid paint
Superstructure deck finish	non-skid paint
Cockpit deck finish	teak
Window frame	aluminium
Window material	tempered glass
Deckhatch	Gebo (2018)
Mast can be lowered	manual
Fuel tank (litre)	GRP 1.100
Freshwater tank (litre)	GRP 350
Blackwater tank (litre)	GRP 350
Blackwater tank extraction	deck extraction + pump



Wheel steering	cable steering
More info on hull	scraped/sanded/epoxy 2018
More info on paintwork	new 2018 DD-paint (2 comp)
Extra info	all windows refurbished and partially renewed
Extra info	fly-screens for deckhatches
Extra info	This yacht has been completely overhauled and refurbished. Decks, superstructure stripped, etc and sealed with epoxy etc.

## ACCOMMODATION

Cabins	1
Berths	6
Interior	teak
Floor	teak (2018)
Open cockpit	yes
Pilot house	with Bremshey pilotseat
Deck saloon	with L-shaped dinette
Headroom saloon (m)	1,81 - 1,92
Heating	calorgas ducted hot air Trumatic
Dinette to convert into berth	1,87 x 1,00
Opening door to cockpit	yes
Galley	yes
Countertop	wood
Sink	stainless steel
Cooker	calor gas Nelson (2017)
Oven	Nelson (2017)
Fridge	Waeco (2017) 12v
Hot water system	Trumatic (heating)
Water pressure system	electrical
Owners cabin	v-bed
Bed length (m)	2,05 x 1,00 (2 x )
Wardrobe	hanging and shelves



Bathroom	1
Toilet	shared
Toilet system	manual
Wash basin	in the bathroom
Shower	shared
Extra info	new upholstery + mattresses
Extra info	interior completely refurbished

## MACHINERY

No of engines	2
Make	Perkins
Type	HT6354
HP	115,00
kW	84,53
Fuel	diesel
Year installed	1969
Maximum speed (kn)	15
Cruising speed (kn)	6
Consumption (l/hr)	2 x 5 ltr/hr
Engine cooling system	freshwater heat exchanger
Drive	shaft
Shaft seal	yes
Engine controls	bowden cable
Gearbox	Velvet
Exhaust	watercooled
Propeller type	fixed 2 x
Propeller blades	3 x
Propeller shaft material	stainless steel (2017)
Shaft lubrication	water
Manual bilge pump	yes
Electric bilge pump	yes



Electrical installation	refurbished 24v/220v
Start battery	2 x 12v (2013)
Service battery	2 x 12v (2013) 165amp
Battery charger	Pro-Mariner 24/50amp
Inverter	24v -> 220v (1100watt)
Diode battery combiners	yes
Shorepower	with cable
Trimtabs	fixed
Extra info	Engineroom refurbished Engines full maintenance + overhaul fuelpumps, heatexchangers, injectors etc.
Extra info	Engine power has been reduced to 8 knots (because of licence), can be set to maximum upon request of the buyer

## NAVIGATION

Compass	Richie
Depth sounder/log	Lowrance (2015)
Forw. looking depth sounder	Lowrance Sonar (2015)
VHF	+ Navman 7100 (2015) Sailor RT2048
Radar	Lowrance (2015)
GPS	Lowrance (2015)
Plotter	Lowrance HDS10(2015)
Electronis chart(s)	1 x
Searchlight	on pilothouse

## EQUIPMENT

Cockpit cover	+ cover front window (2018)
Cockpit cushions	also forms a sunbathing bed
Cockpit table	yes
Bathing platform	yes
Boarding ladder	stainless steel
Deck shower	hot + cold



Anchor	CQR Plough
Anchor chain	+ line 40 mtr
Windlass	manual
Deck wash	yes
Sea railing	stainless steel
Grab rail (superstructure)	stainless steel
Pushpit	yes
Pulpit	yes
Lifebuoy	1 x
Wiper	1 x
Clearview window	overhauled 1 x
Horn	yes
Radar reflector	yes
Fenders	yes
Mooring lines	yes
TV	yes
Radio-cd player	yes
Cockpit speakers	yes
Speakers in salon	yes
Clock - barometer	clock (no barometer)







# NELSON WEYMOUTH 32







# NELSON WEYMOUTH 32



## NELSON WEYMOUTH 32



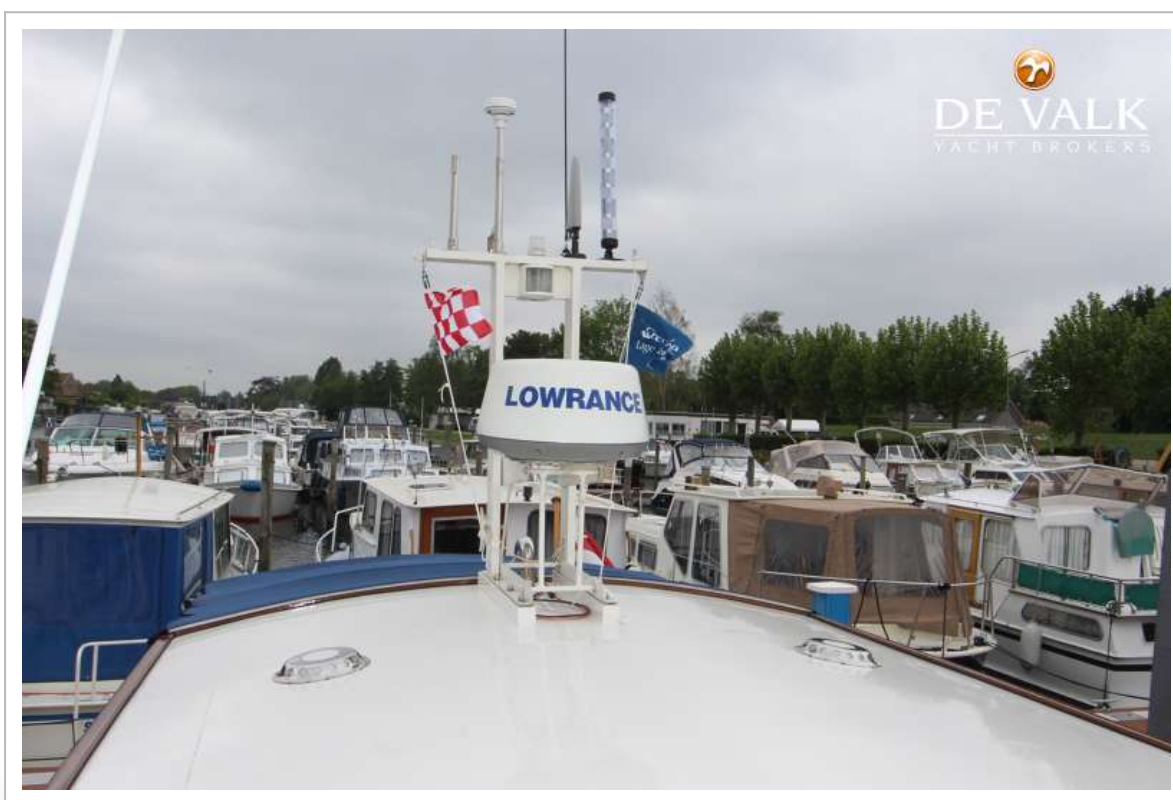


# NELSON WEYMOUTH 32



# NELSON WEYMOUTH 32







## NELSON WEYMOUTH 32

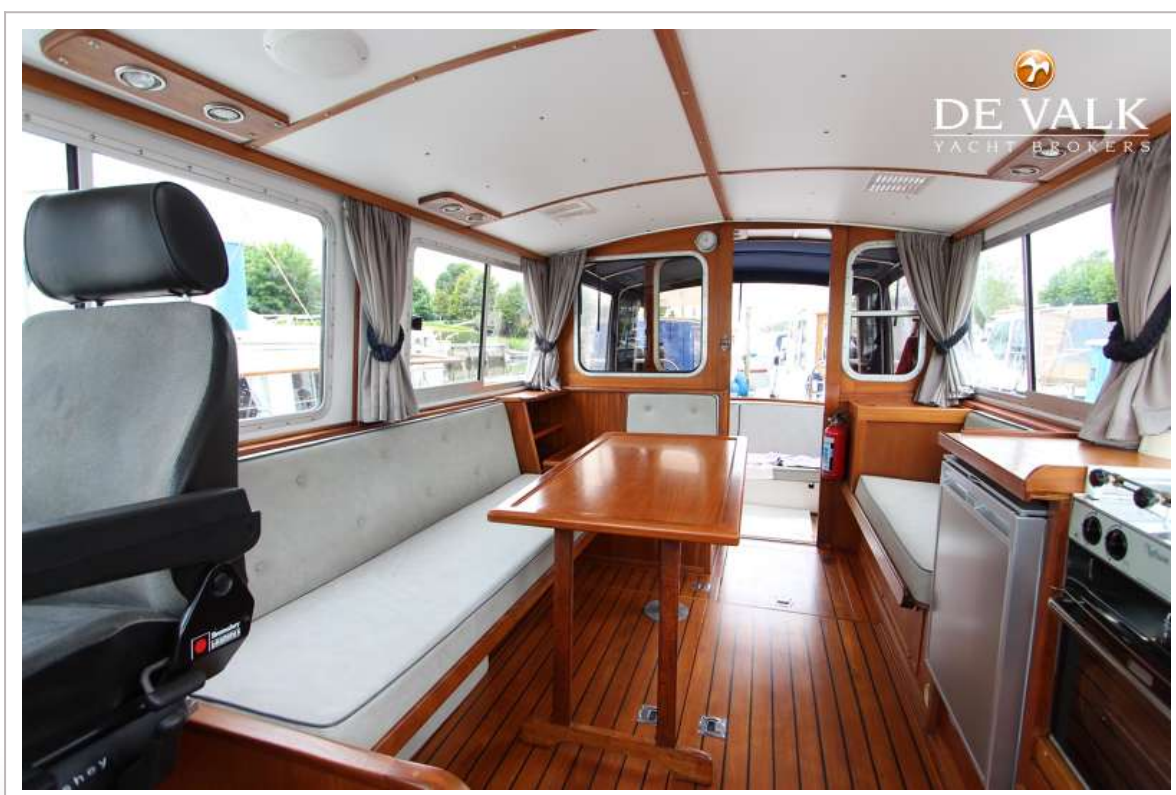
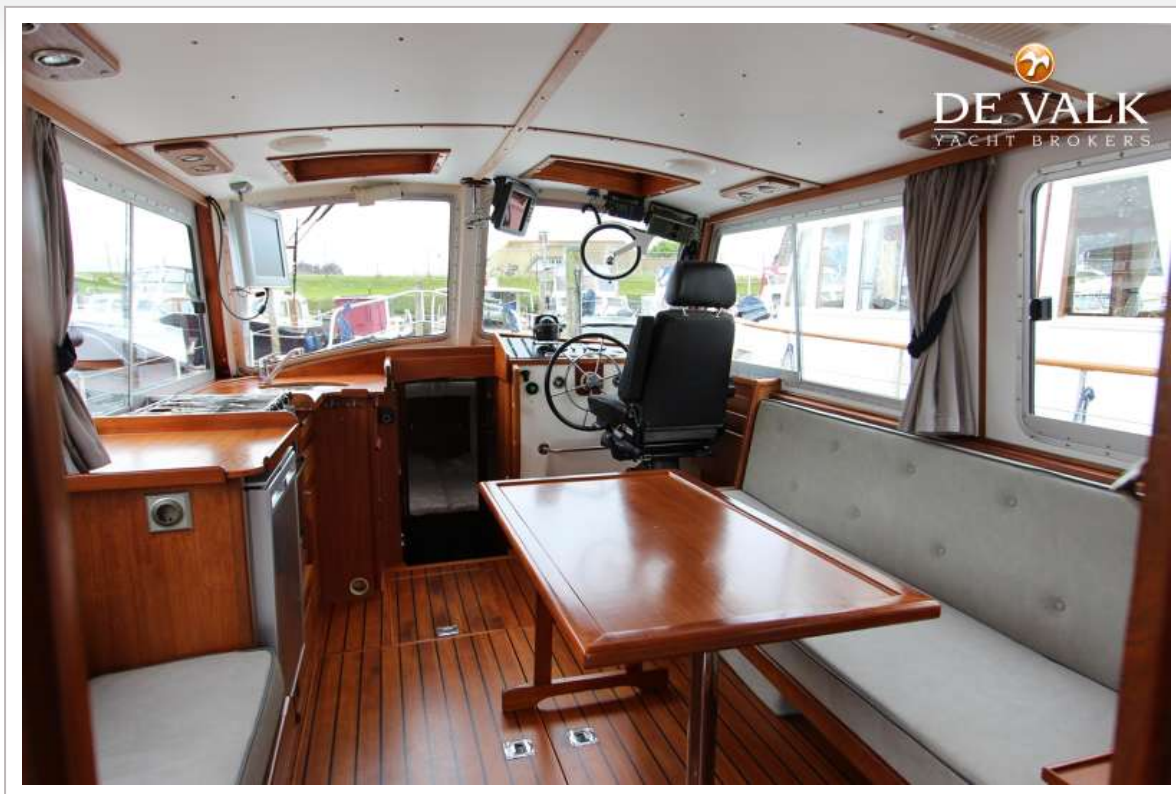




# NELSON WEYMOUTH 32



## NELSON WEYMOUTH 32





## NELSON WEYMOUTH 32



# NELSON WEYMOUTH 32

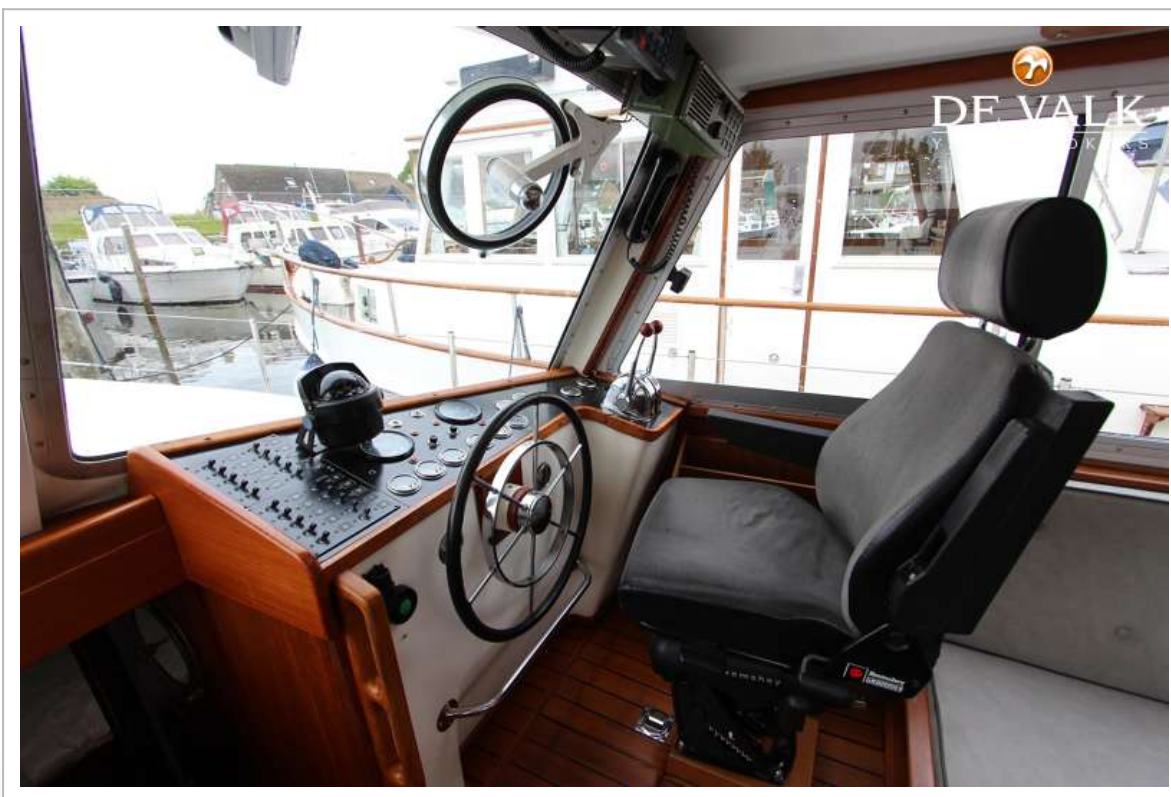
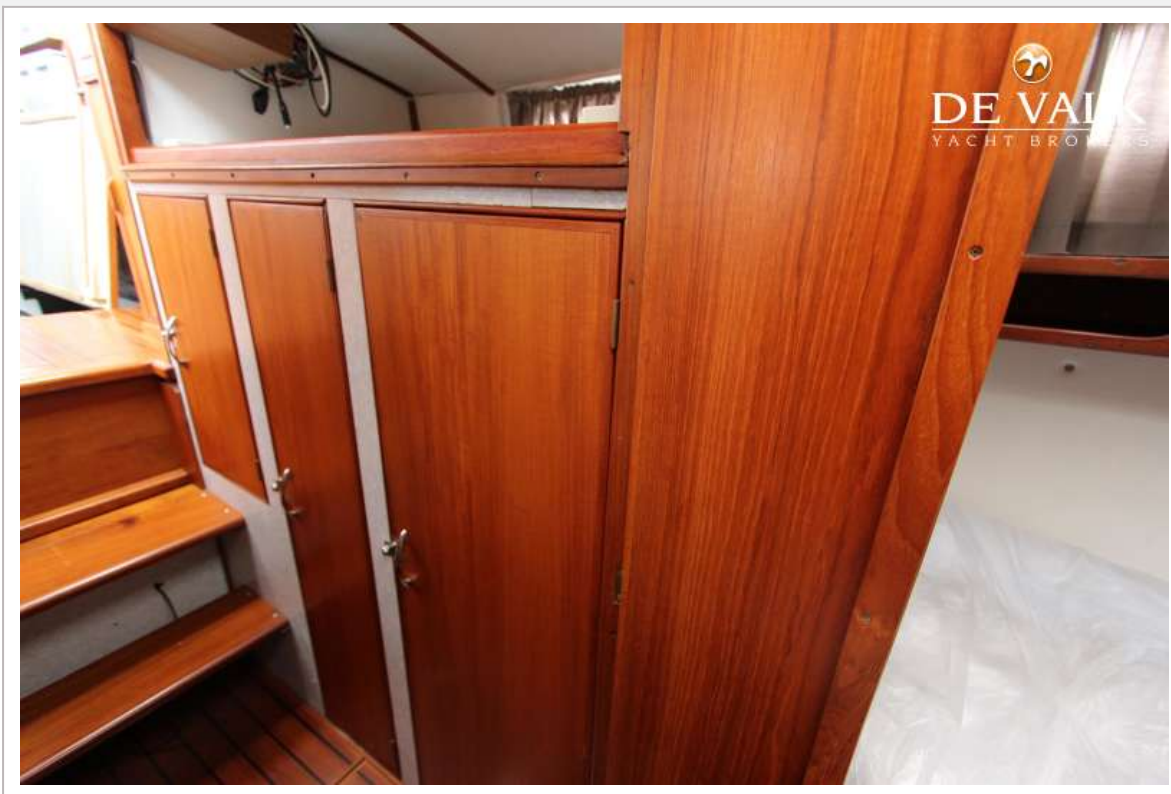




# NELSON WEYMOUTH 32



## NELSON WEYMOUTH 32





## NELSON WEYMOUTH 32



## NELSON WEYMOUTH 32

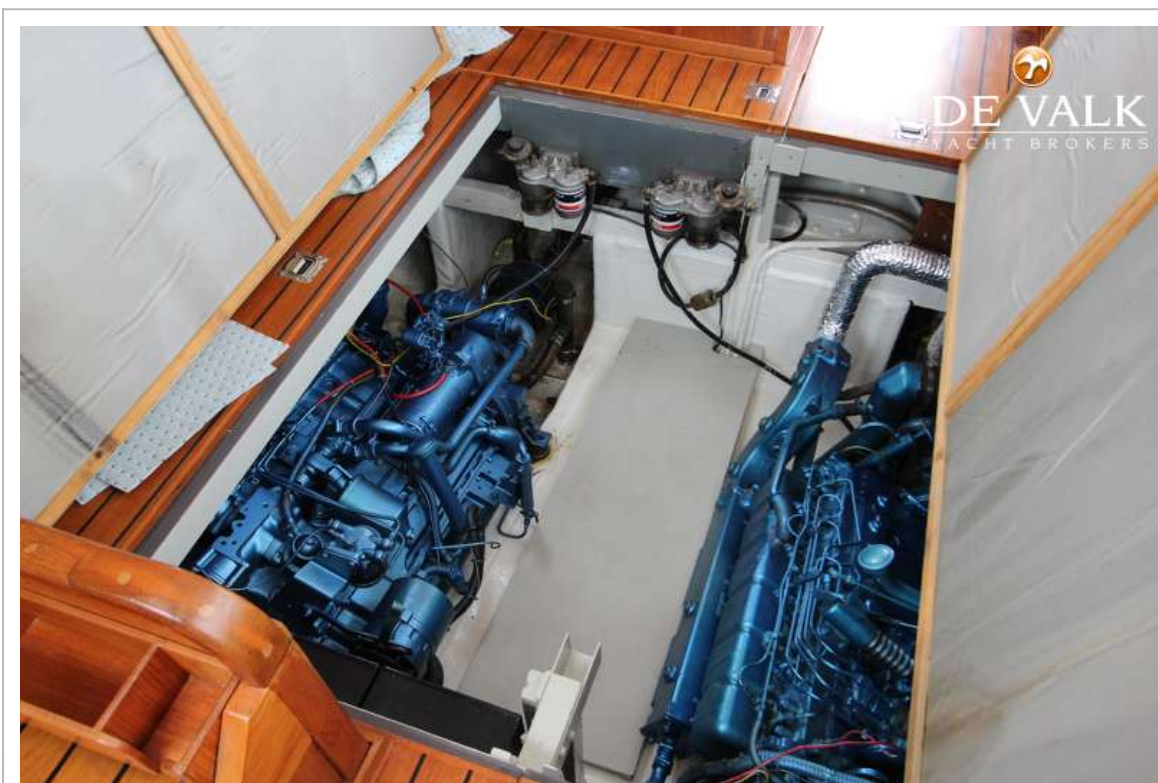




# NELSON WEYMOUTH 32



## NELSON WEYMOUTH 32





# NELSON WEYMOUTH 32



