



DE VALK
YACHT BROKERS



HANSE 371



DE VALK
YACHT BROKERS

BROKERAGE | CHARTER | BERTHS | FINANCE | INSURANCE | YACHT MANAGEMENT

BROKER'S COMMENTS

The Hanse 371 is an elegant performance cruiser, innovative Judel & Vrolijk design with a classic touch. Her modern interior (in perfect condition, like new) offers lots of space below decks with three full size cabins and ample seating in saloon. Shiny woodwork with light panels, enough storage space throughout. Her deck layout with self-tacking jib and wheel steering makes her very easy to handle. "Scarab" is very well kept, with good navigation and sailing equipment.

Jochem Heijermans

SPECIFICATIONS

Dimensions	11.50 x 3.59 x 1.98 (m)	Builder	Hanse Yachts
Built	2003	Cabins	3
Material	GRP	Berths	6
Engine(s)	1 x Volvo Penta MD2030D-BT diesel	Hp/Kw	29.00 (hp), 21.34 (kw)
Asking price	€ 89.990 (VAT Paid)	Lying	elsewhere / Not at sales office

CONTACT

Sales office	De Valk Belgium	Telephone	+32 586 80 218
Address	1401 PT Nieuwpoort BE	E-mail	belgium@devalk.nl

DISCLAIMER

These particulars are given in good faith as supplied but cannot be guaranteed.



GENERAL

Model	HANSE 371
Type	sailing yacht
LOA (m)	11,50
Beam (m)	3,59
Draft (m)	1,98
Air draft (m)	18,50
Headroom (m)	1,95
Year built	2003
Builder	Hanse Yachts
Country	Germany
Designer	Judel / Vrolijk & Co
Displacement (t)	6,9
Ballast (tonnes)	2,46
CE norm	A
Hull material	GRP
Hull colour	blue Wrapped
Hull shape	round-bilged
Keel type	fin keel
Superstructure material	GRP
Rubbing strake	plastic Black
Deck material	GRP
Deck finish	teak
Superstructure deck finish	non-skid moulded in
Cockpit deck finish	teak
Antifouling (year)	2023
Window frame	aluminium
Window material	polycarbonate
Deckhatch	4 x Lewmar
Portholes	aluminium
Fuel tank (litre)	steel 80



Level indicator (fuel tank)	yes
Freshwater tank (litre)	polyethylene 230
Blackwater tank (litre)	polyethylene 48
Blackwater tank extraction	deck extraction + pump
Wheel steering	mechanical Whitlock pedestal with a leather covered steering wheel
Emergency tiller	yes
More info on hull	2019 underwater hull sanded back to gelcoat and completely rebui

ACCOMMODATION

Cabins	3
Berths	6
Interior	cherry High gloss varnished
Floor	woodprint "Teak & Holly look-a-like"
Saloon	Blue upholstery
Headroom saloon (m)	1,95
Heating	diesel ducted hot air Webasto
Chart table	Headroom : 1,98 m
Aft Cabin	2x
Dinette	yes
Convertible berth	Starboard side : 2.10 x 0.60 m
Galley	On starboard side - Headroom : 1.95 m
Countertop	Duropol (White)
Sink	stainless steel 2 x
Cooker	calor gas 2 burner
Oven	Colar gas
Fridge	Top loader with an Isotherm compressor
Hot water system	220V + engine Isotemp
Water pressure system	electrical
Owners cabin	v-bed Front cabin - Headroom: 1.95 m
Bed length (m)	1.95 x 1.55/1.90 (wide)



Wardrobe	drawers and shelves
Bathroom	shared Headroom : 1.93 m
Toilet	shared
Toilet system	manual Jabsco
Wash basin	in the bathroom
Shower	shared
Guest cabin 1	double bed In aft cabin - Headroom : 1.89
Bed length (m)	2.05 x 1.65
Wardrobe	hanging and shelves
Guest cabin 2	double bed In aft cabin - Headroom : 1.89
Bed length (m)	2.05 x 1.65
Wardrobe	hanging and shelves

MACHINERY

No of engines	1
Make	Volvo Penta
Type	MD2030D-BT
HP	29
kW	21.34
Fuel	diesel
Year installed	2003
Maximum speed (kn)	7
Cruising speed (kn)	6
Engine hours	1375
Engine cooling system	freshwater heat exchanger
Drive	sail-drive
Saildrive seal	(2020)
Engine controls	bowden cable
Gearbox	mechanical
Bowthruster	electric (2007) Vetus
Propeller type	folding Flexofold



Propeller blades	2
Batteries	yes
Start battery	yes
Service battery	2x AGM 200Ah
Bowthruster battery	yes
Battery charger	Mastervolt (2009)
Solar panel	yes
Shorepower	with cable

NAVIGATION

Compass	yes
Electric compass	On autopilot
Depth sounder/log	Raymarine ST 60
Windset	Raymarine
VHF	Simrad RD68
VHF handheld	Standard Horizon HX890
Autopilot	Raymarine + remote control (2015)
Rudder angle indicator	On autopilot
Radar/GPS/plotter	Raymarine Aixom 9 (2021)
Navtex	ICS NAV6
AIS transceiver	Raymarine Class B (2021)
Navigation lights	yes

EQUIPMENT

Sprayhood	(2019
Cockpit table	yes
Bathing platform	yes
Boarding ladder	stainless steel
Anchor	yes
Windlass	electrical
Sea railing	wire



Grab rail (superstructure)	wood
Fenders	yes
Mooring lines	yes
Radio	yes
Speakers in salon	yes

RIGGING

Rigging	fractional
Standing rigging	wire
Brand mast	Sparcraft
Material mast	aluminium
Spreaders	2 x Set of spreaders
Mainsail	Wittevrongel (2006)
Mainsail cover	Lazy-Bag mainsail cover with Lazy-Jacks
Jib	Wittevrongel (2018)
Genoa	Wittevrongel 130% (2009)
Cutter furler	Facnor Flat Deck
Gennaker	95% surface
Reefing System	slabreefing
Backstay adjuster	tackle
Boomvang	mechanical and tackle
Primary sheet winch	2x Harken 44ST
Secondary sheet winch	2x Harken 40ST
Multifunctional winches	yes



HANSE 371



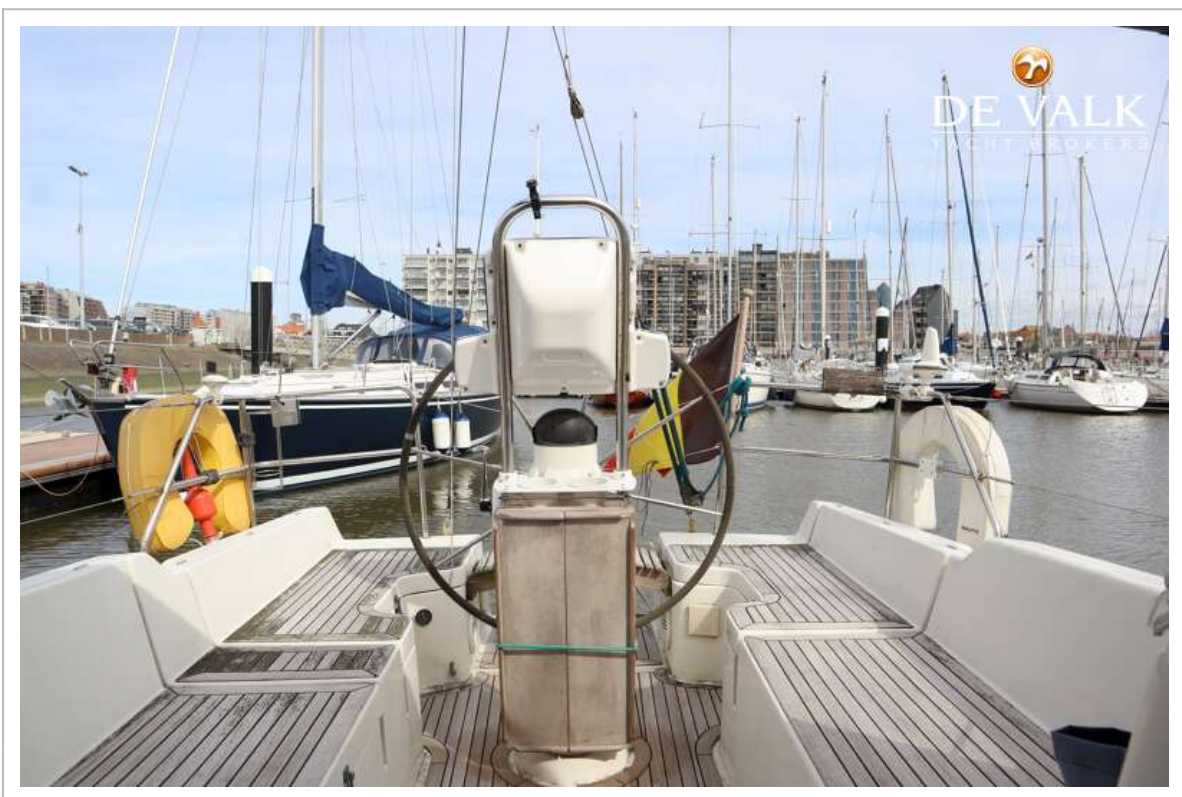




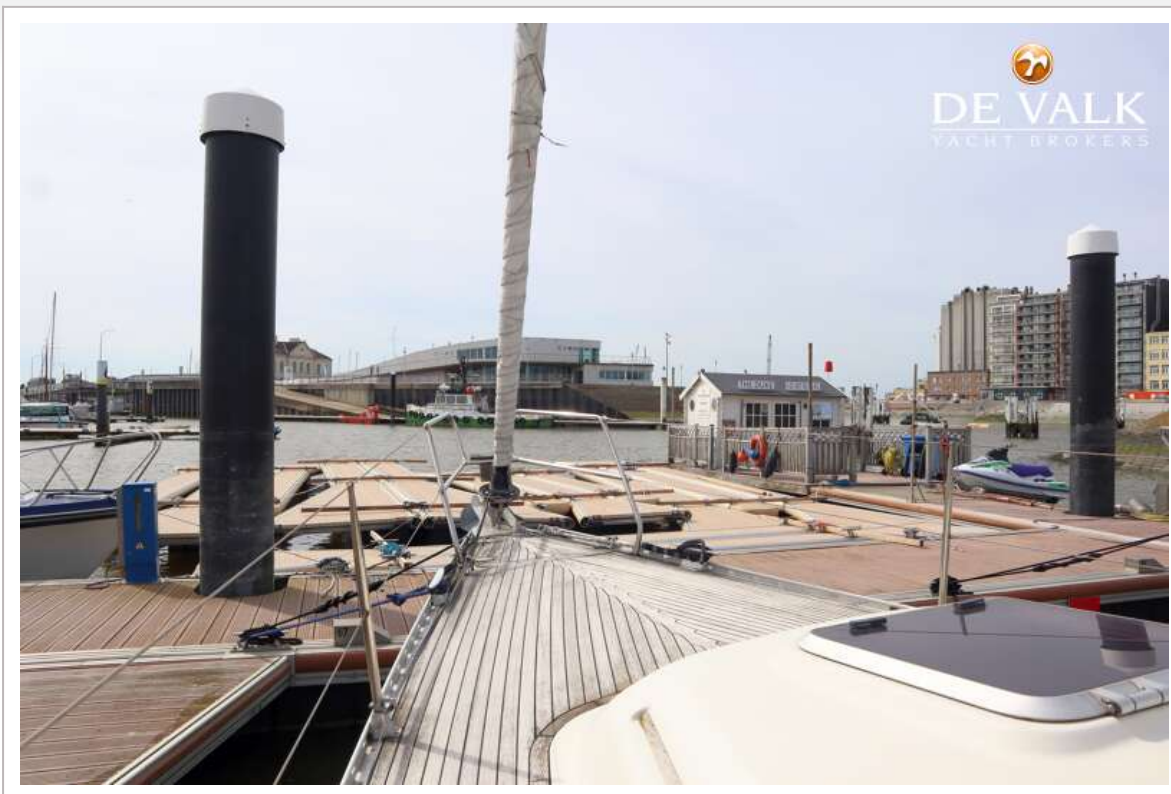
HANSE 371



HANSE 371











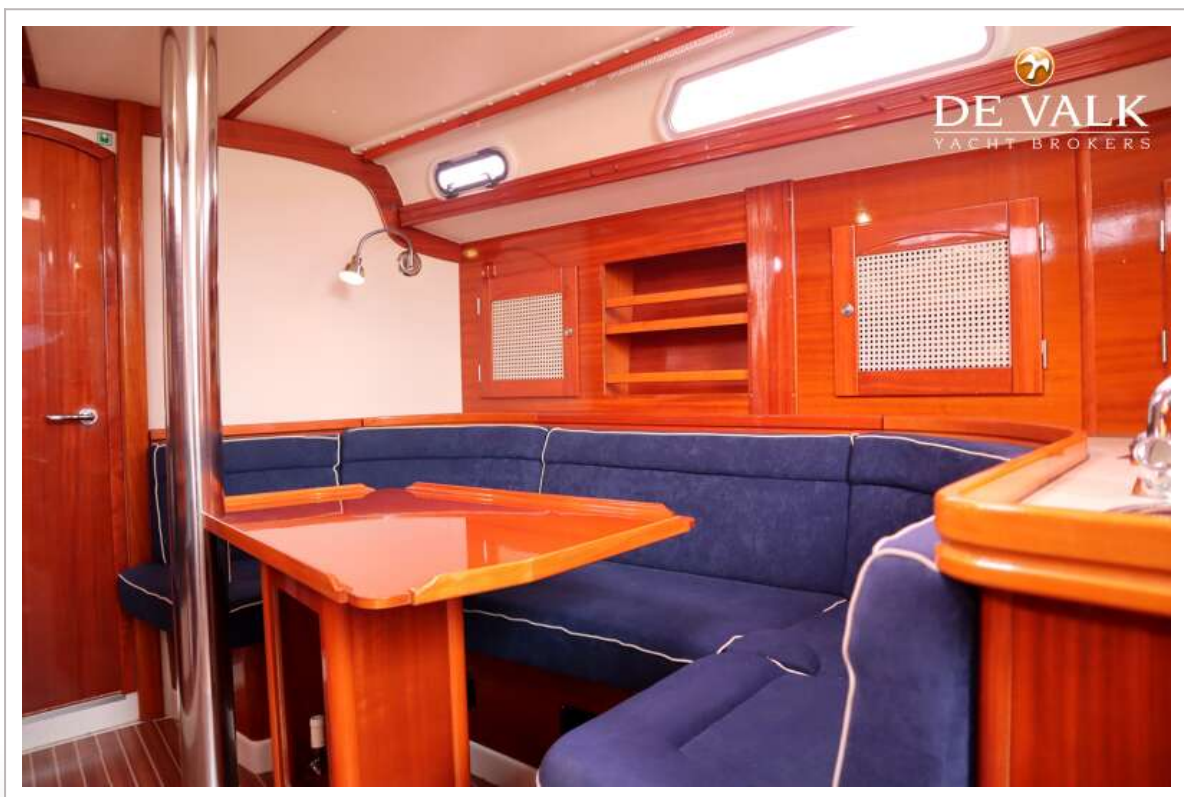
HANSE 371



HANSE 371



HANSE 371



HANSE 371



HANSE 371

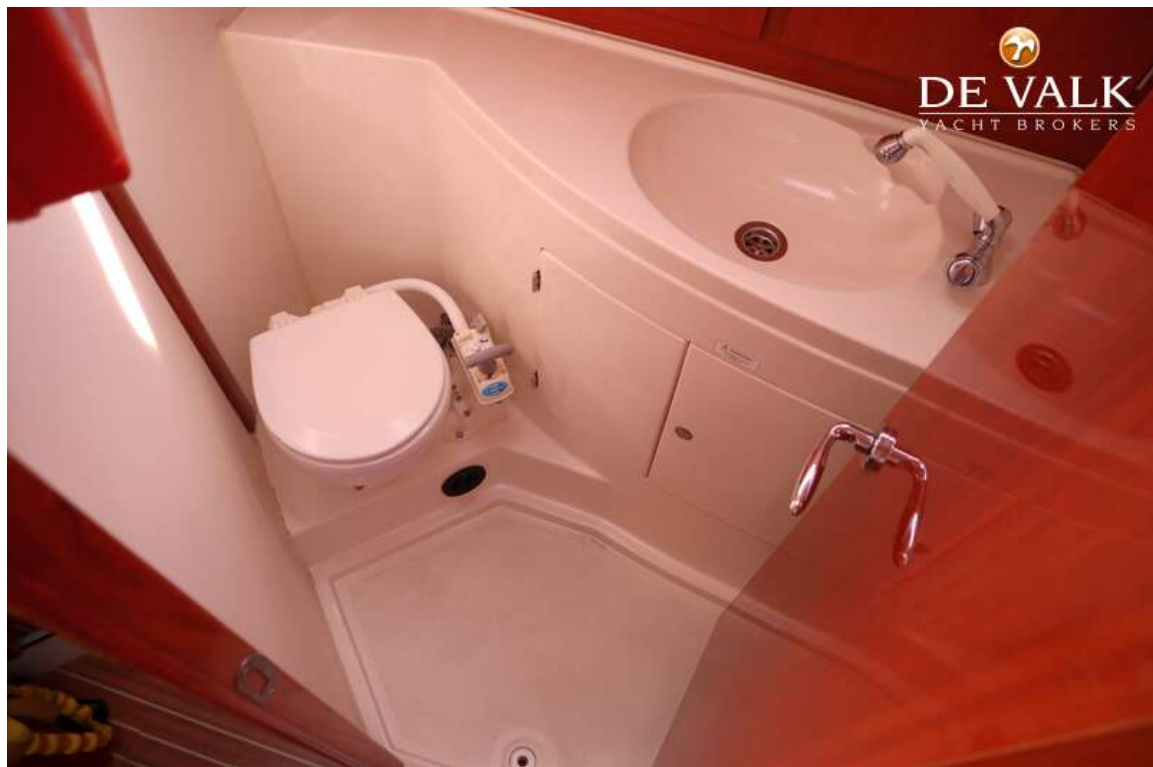


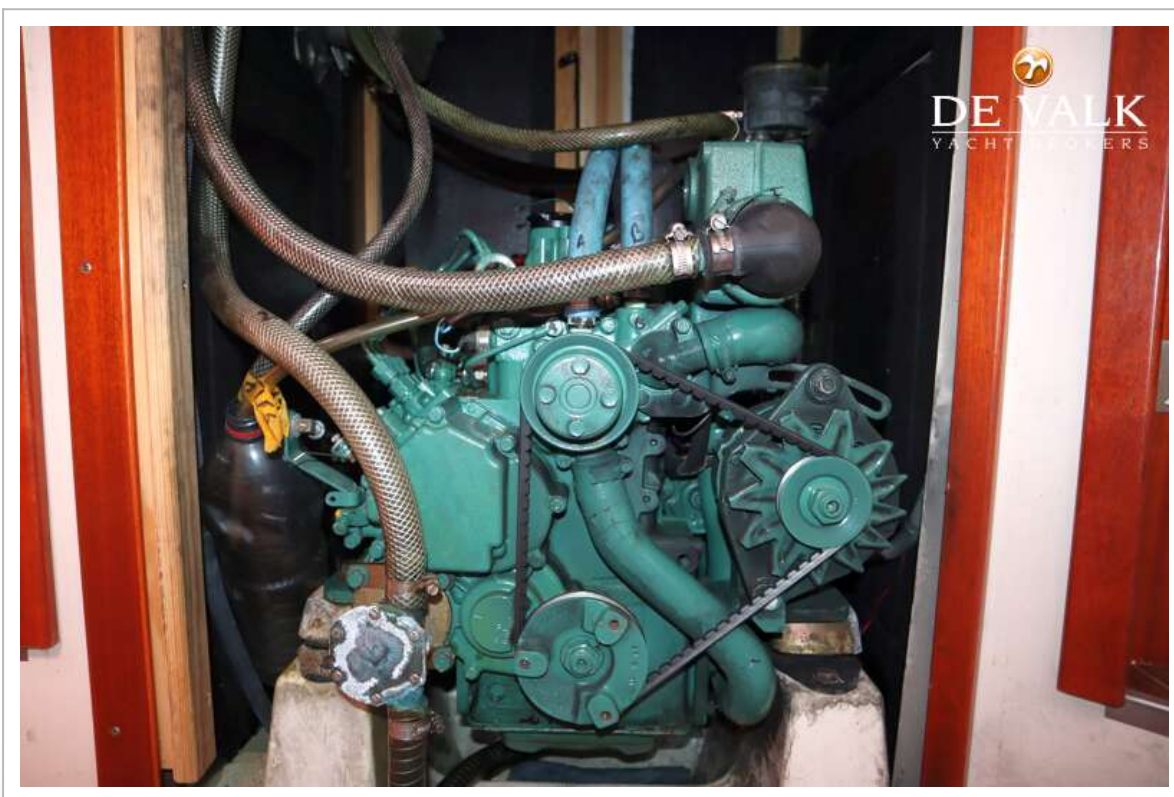
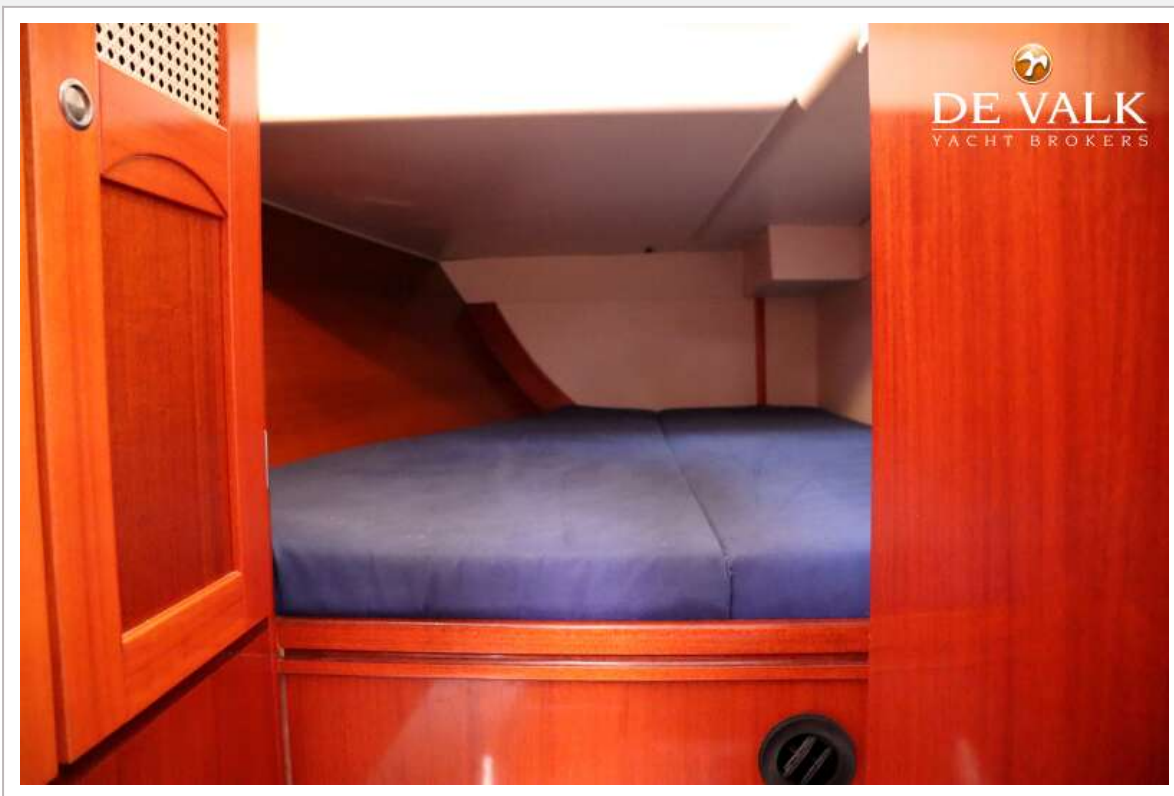
HANSE 371



HANSE 371







HANSE 371

