



DE VALK
YACHT BROKERS



BRUCE ROBERTS SPRAY 42



DE VALK
YACHT BROKERS

BROKERAGE | CHARTER | BERTHS | FINANCE | INSURANCE | YACHT MANAGEMENT

BRUCE ROBERTS SPRAY 42

BROKER'S COMMENTS

This Bruce Roberts Spray 42 was built in Holland by a professional yard using 5-6 mm thick steel. It is an excellent example of this famous Bruce Roberts design. This high latitude cruiser is sloop/cutter rigged and is 100% ready for cruising the Northern seas as well as your dream of circumnavigating the globe. She is very safe and capable with a good detail finish and she comes with new sails, new winches, new anchor winch and anchor, spare parts, etc. If you are looking for an adventure, you are surely going to be impressed by this Bruce Roberts Spray 42.

Jochem Heijermans

SPECIFICATIONS

Dimensions	12.80 x 3.96 x 1.70 (m)	Builder	Roelofs Jachtbouw & Constructie
Built	1990	Cabins	2
Material	Steel	Berths	5
Engine(s)	1 x Mercedes 240D diesel	Hp/Kw	72.00 (hp), 52.92 (kw)
Asking price	sold (VAT)	Lying	elsewhere / Not at sales office

CONTACT

Sales office	De Valk Belgium	Telephone	+32 586 80 218
Address	1401 PT Nieuwpoort BE	E-mail	belgium@devalk.nl

DISCLAIMER

These particulars are given in good faith as supplied but cannot be guaranteed.



BRUCE ROBERTS SPRAY 42

GENERAL

Model	BRUCE ROBERTS SPRAY 42
Type	sailing yacht
LOA (m)	12,80
Beam (m)	3,96
Draft (m)	1,70
Headroom (m)	1,95
Year built	1990
Builder	Roelofs Jachtbouw & Constructie
Designer	Bruce Roberts
Displacement (t)	22
Ballast (tonnes)	6
CE norm	A
Hull material	steel
Hull colour	blue
Hull thickness (mm)	6
Hull shape	full bilged
Keel type	long keel
Superstructure material	steel
Superstructure (mm)	6
Deck plate thickness (mm)	6
Rubbing strake	steel
Deck material	steel
Deck finish	non-skid paint
Superstructure deck finish	paint
Cockpit deck finish	paint
Dorades	4
Window frame	aluminium
Window material	tempered glass
Portholes	stainless steel
Insulation	foam plates



Radar arch	non collapsible
Mast can be lowered	manual
Fuel tank (litre)	steel 750
Freshwater tank (litre)	stainless steel 600
Blackwater tank (litre)	polyethylene 100
Blackwater tank extraction	pump 100
Wheel steering	hydraulic
Emergency tiller	yes
Extra info	Cockpit in Aluminium

ACCOMMODATION

Cabins	2
Berths	5
Interior	teak
Floor	teak
Open cockpit	yes
Saloon	yes
Headroom saloon (m)	1,90
Heating	stove diesel
Chart table	yes
Dinette	yes
Galley	yes
Countertop	plastic
Sink	stainless steel
Cooker	calor gas
Oven	Techimpex
Gas alarm	yes
Fridge	Coolbox
Hot water system	220V + engine
Water pressure system	electrical
Manual and/or foot pump	yes



BRUCE ROBERTS SPRAY 42

Owners cabin	double bed
Bed length (m)	1x 205 x 135
Wardrobe	hanging/drawers/shelves
Bathroom	shared
Toilet	shared
Toilet system	manual
Wash basin	in the bathroom
Shower	shared
Guest cabin 1	double bed
Bed length (m)	1x 190 x 135
Wardrobe	shelves
Bathroom	shared
Toilet	shared
Toilet system	manual
Wash basin	in the bathroom
Shower	shared
Wardrobe	drawers
Wardrobe	drawers
Wardrobe	drawers

MACHINERY

No of engines	1
Make	Mercedes
Type	240D
HP	72
kW	52,92
Fuel	diesel
Year installed	1990
Consumption (l/hr)	5
Engine cooling system	freshwater heat exchanger
Drive	shaft



Shaft seal	yes
Engine controls	bowden cable
Gearbox	mechanical
Gearbox	mechanical
Exhaust	watercooled
Propeller type	fixed
Propeller blades	3
Propeller shaft material	Bronze
Shaft lubrication	grease
Manual bilge pump	yes
Batteries	2
Start battery	105 AH
Service battery	180 AH
Battery charger	Selmar
Wind generator	Kiss
Solar panel	yes
Shorepower	with cable 30M

NAVIGATION

Compass	Plastimo
Depth sounder	Nasa Marine
Log	Nasa Marine
VHF	Shipmate
Autopilot	Auto Nav
Rudder angle indicator	Autonav
Radar	Raytheon R20
Weather receiver	Nasa Marine Target Nautic Pro
Electronis chart(s)	Raytheon
AIS receiver	yes
Radio receiver	Kenwood
Searchlight	yes



EQUIPMENT

Fixed windscreen	7
Sprayhood	yes
Fixed hardtop	yes
Cockpit cover	yes
Dodger	yes
Cockpit cushions	yes
Cockpit table	yes
Bathing platform	yes
Boarding ladder	stainless steel
Anchor	Vulkan
Anchor chain	80M
Capstan	yes
Dinghy	
Outboard	Honda 2,3 PK
Davits	stainless steel
Davits controls	manual
Sea railing	wire
Grab rail (superstructure)	stainless steel
Railing side opening gates	2x
Life raft	container
Life raft (pers)	4
Last life raft survey	Valid until 2023
Lifejackets	yes
Lifebuoy	yes
Danbuoy	yes
Fenders	yes
Mooring lines	yes
Spare parts	yes
Tools	yes
TV receiver	yes



Radio-cd player	Kenwood
Cockpit speakers	yes
Speakers in salon	yes
Clock - barometer	yes
Fire extinguisher	yes

RIGGING

Rigging	sloop-cutter
Standing rigging	wire
Material mast	aluminium
Spreaders	2
Mainsail cover	2018
Battcars	yes
Fully battened mainsail	Doyl 2017
Jib	2009
Jib I	yes
Genoa	yes
Spinnaker	yes
Booster	2
Staysail	yes
Stormjib	yes
Primary sheet winch	2 x Antal XT 52
Secondary sheet winch	2 x Barlow 26
Halyard winches	yes
Spinnaker winch	yes
Spi-pole	aluminium 2x
Extra info	Extra Mainsail, 2 roller Genoas, Staysail,Stormjib
Extra info	Dyform Rigging Inspected 2009



BRUCE ROBERTS SPRAY 42



BRUCE ROBERTS SPRAY 42



BRUCE ROBERTS SPRAY 42



BRUCE ROBERTS SPRAY 42



BRUCE ROBERTS SPRAY 42



BRUCE ROBERTS SPRAY 42



BRUCE ROBERTS SPRAY 42



BRUCE ROBERTS SPRAY 42



BRUCE ROBERTS SPRAY 42

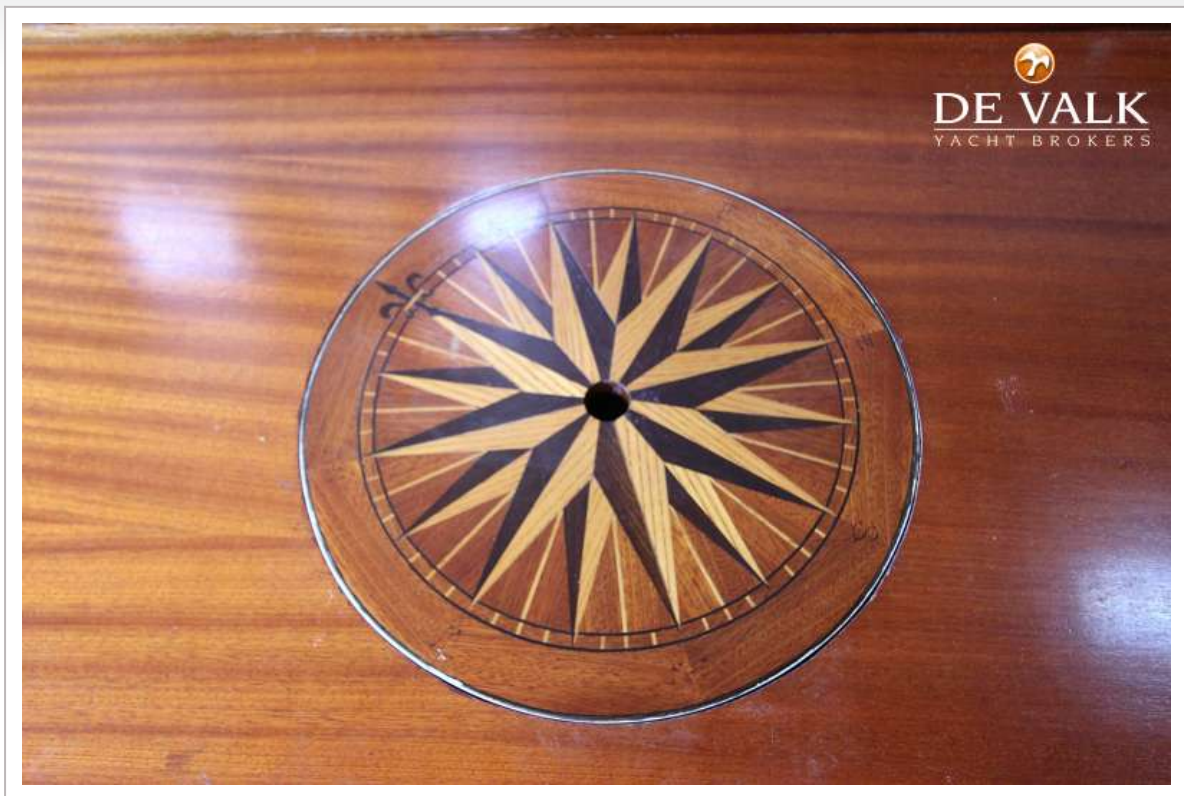


BRUCE ROBERTS SPRAY 42

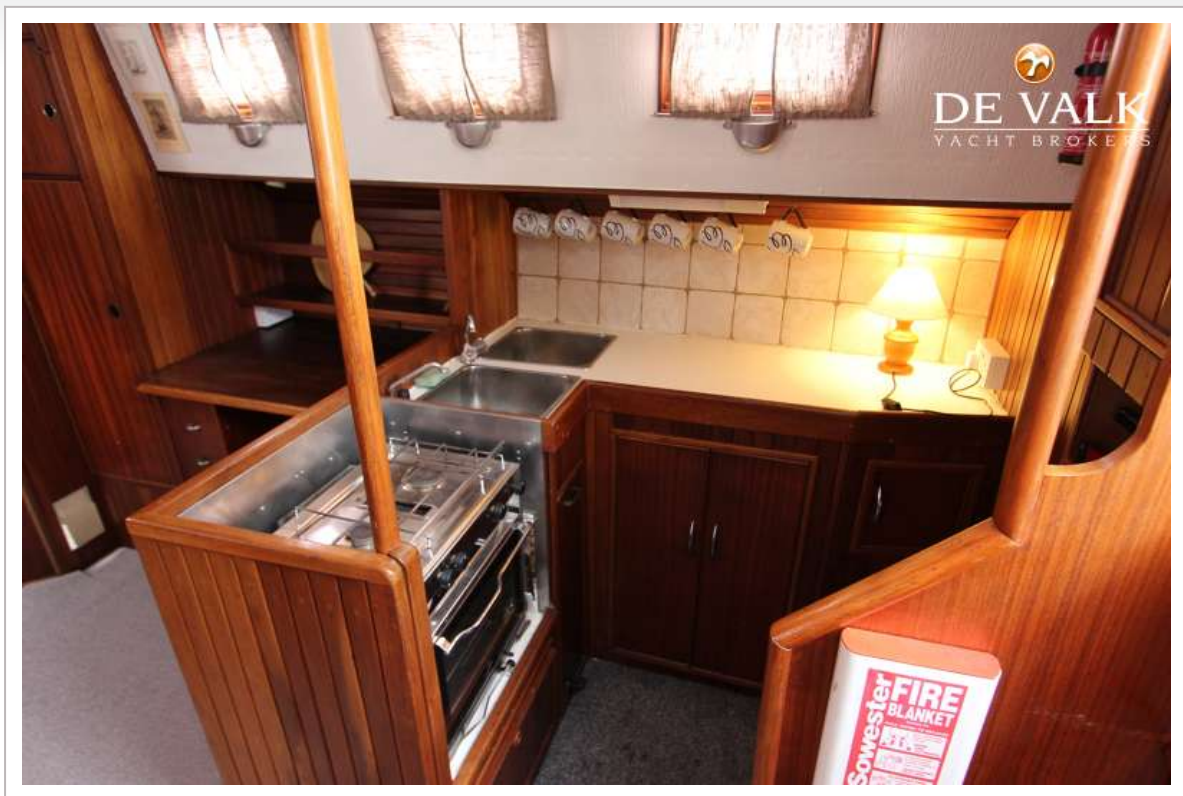


BRUCE ROBERTS SPRAY 42





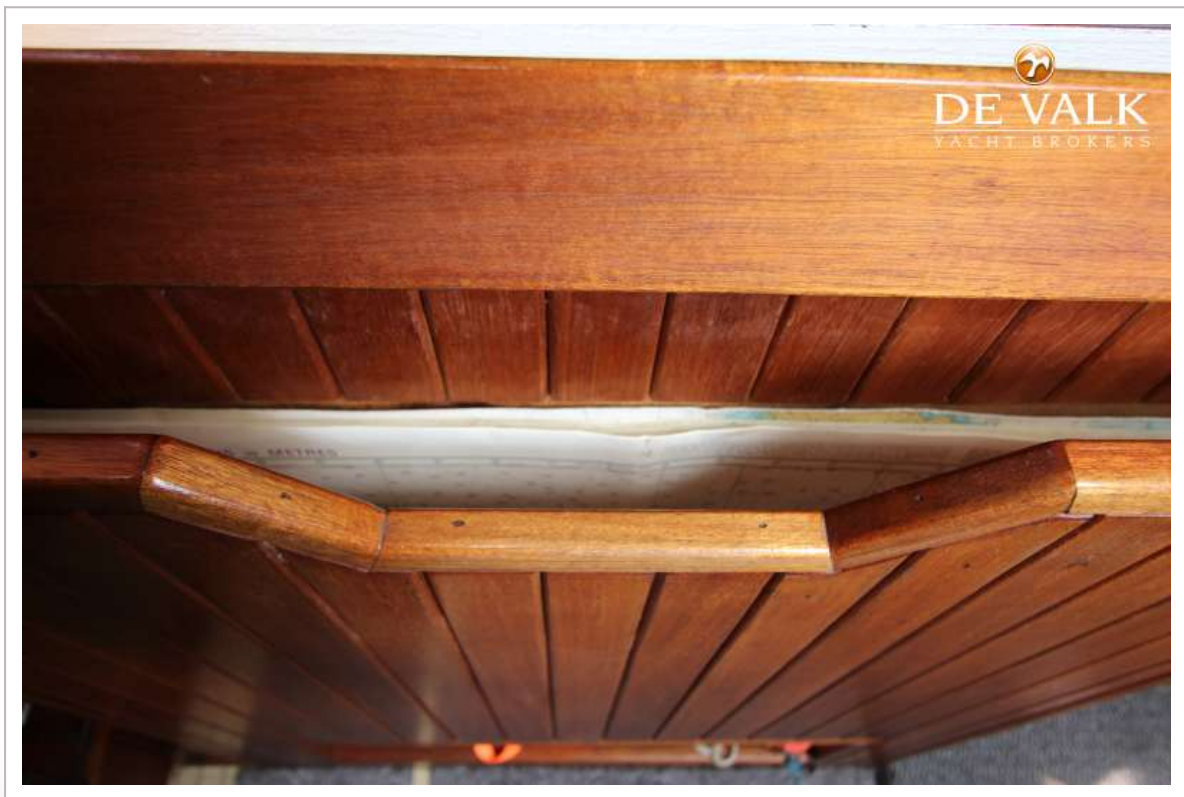
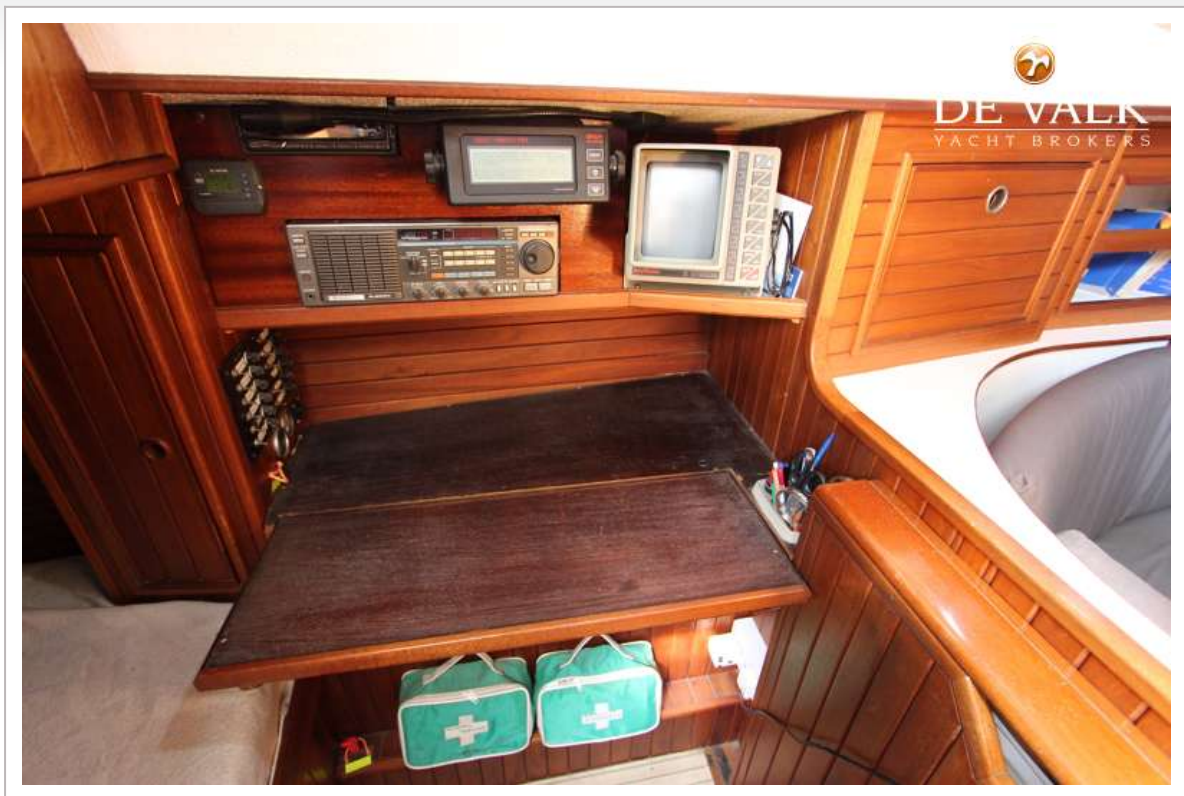
BRUCE ROBERTS SPRAY 42



BRUCE ROBERTS SPRAY 42



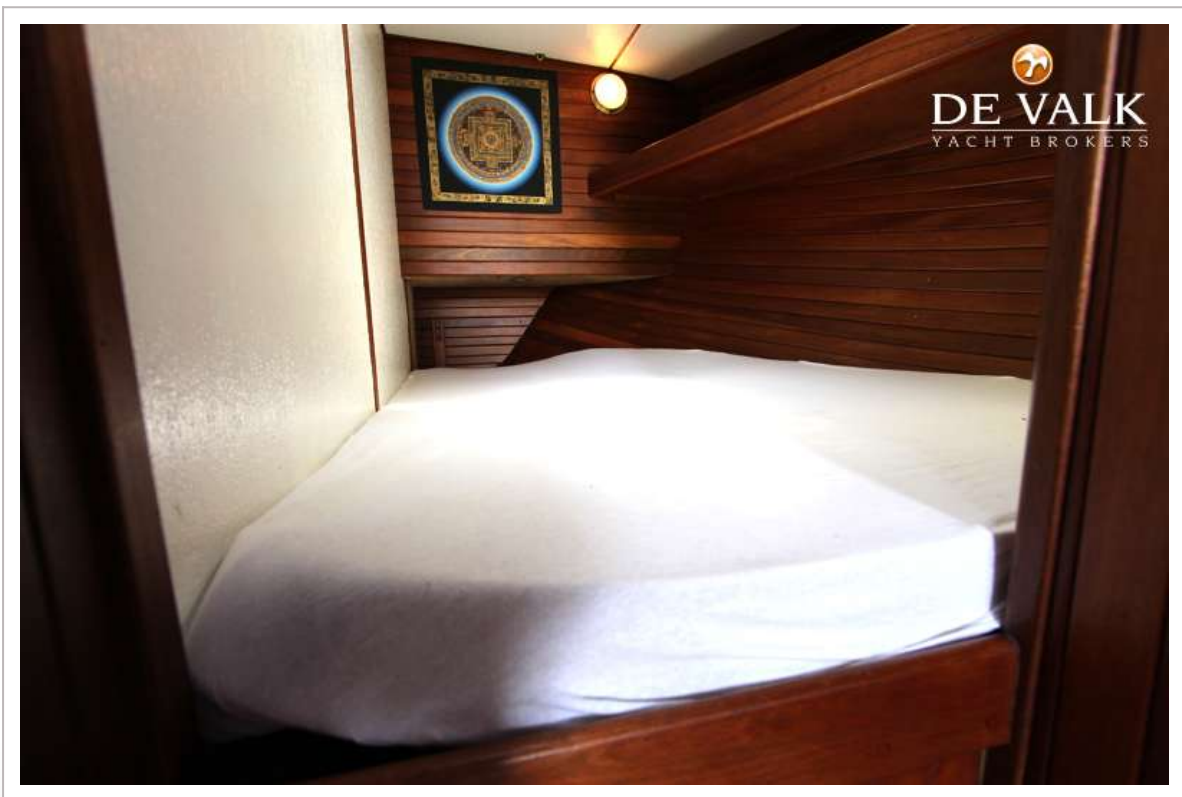
BRUCE ROBERTS SPRAY 42



BRUCE ROBERTS SPRAY 42



BRUCE ROBERTS SPRAY 42





BRUCE ROBERTS SPRAY 42

