



TRINTELLA 42



TRINTELLA 42

BROKER'S COMMENTS

Fitted with the exclusive Dieter Sieger design interior, this Trintella 42 is for the connoisseur who appreciates the sail performance, heritage and build quality that yacht builder Anne Wever is so famous for. Though a more classic yacht in appearance, you will have a tough time beating the Trintella 42 when the sails are set. Below decks one immediately is struck by the condition of the interior, the amount of stowage space and privacy offered to owner and friends. No cumbersome teak decks but maintenance-free MarineDeck fitted for safety and comfort. Comes very well documented.

Marc Weijenberg

SPECIFICATIONS

Dimensions	12.90 x 4.00 x 2.15 (m)	Builder	Anne Wever BV
Built	1981	Cabins	3
Material	GRP	Berths	6
Engine(s)	1 x Volvo Penta 2003T diesel	Hp/Kw	43.00 (hp), 31.61 (kw)
Asking price	sold (VAT)	Lying	at sales office

CONTACT

Sales office	De Valk Sint Annaland B.V.	Telephone	+31 (0)166 601 000
Address	Koelhuisweg 4 4697 RM Sint Annaland NL	E-mail	sintannaland@devalk.nl

DISCLAIMER

These particulars are given in good faith as supplied but cannot be guaranteed.



GENERAL

Model	TRINTELLA 42
Type	sailing yacht
LOA (m)	12,90
LWL (m)	10,60
Beam (m)	4,00
Draft (m)	2,15
Air draft (m)	20,00
Headroom (m)	1,92
Year built	1981
Builder	Anne Wever BV
Country	The Netherlands
Designer	EG van de Stadt
Displacement (t)	9
Ballast (tonnes)	lead 4
Hull material	GRP
Hull colour	white
Hull shape	round-bilged
Keel type	fin keel
Superstructure material	GRP
Rubbing strake	wood
Deck material	GRP
Deck finish	cork MarineDeck (2007)
Cockpit deck finish	cork MarineDeck (2007)
Dorades	2 x
Window material	polycarbonate (2019)
Deckhatch	+ large lazarette forward 2 x
Portholes	aluminium
Fuel tank (litre)	GRP 250
Freshwater tank (litre)	GRP 450
Blackwater tank (litre)	No



Wheel steering	rack & pinion Whitlock
Extra info	some seacocks renewed

ACCOMMODATION

Cabins	3
Berths	6
Interior	teak
Floor	teak and holly Carpets +
Saloon	with U-shaped dinette
Headroom saloon (m)	1,92
Heating	diesel ducted hot air Eberspaecher D3L
Chart table	yes
Aft Cabin	2 x
Galley	yes
Countertop	Ceramic
Sink	2 x
Cooker	calor gas Eno 2-burner
Oven	Eno
Fridge	Isotherm 100 12v
Hot water system	220V + engine Quick (25 ltr)
Water pressure system	electrical
Crockery	Original Trintella set
Owners cabin	double bed
Bed length (m)	1,95 x 1,30
Wardrobe	hanging/drawers/shelves
Bathroom	shared I
Toilet	shared
Toilet system	electric
Wash basin	in the bathroom
Shower	shared
Extra info	with Ocean-Air blind-gauze



Guest cabin 1	double bed
Bed length (m)	2,10 x 1,15
Wardrobe	hanging and shelves
Guest cabin 2	double bed
Bed length (m)	2,10 x 1,15
Wardrobe	hanging and shelves
Extra info	For her age, the interior is in very good condition. New upholstery 2013
Extra info	guestcabins have extra portholes

MACHINERY

No of engines	1
Make	Volvo Penta
Type	2003T
HP	43,00
kW	31,61
Fuel	diesel
Year installed	1990
Maximum speed (kn)	8
Cruising speed (kn)	7
Consumption (l/hr)	3
Engine hours	2950
Engine cooling system	freshwater heat exchanger
Drive	sail-drive
Saildrive seal	unknown
Engine controls	bowden cable
Gearbox	mechanical Volvo Penta
Exhaust	watercooled
Propeller type	feathering Volvo Penta
Propeller blades	3 x
Manual bilge pump	yes



Electric bilge pump	yes
Electrical installation	in 2010 professionally renewed 12/220v
Start battery	1 x 80amp
Service battery	3 x 165amp
Battery monitor	BMI electronic
Battery charger/inverter	Victron 12v/2000watt/70amp
Diode battery combiners	yes
Shorepower	with cable
Extra info	engine major work done in 2015

NAVIGATION

Compass	(small bubble) Sestrel
Electric compass	via autopilot
Depth sounder	Robertson
Log	Robertson
Windset	Robertson
VHF	with extra handset Shipmate RS8300
Autopilot	Robertson AP300X
Radar	(defect) Furuno 1720
Plotter/GPS	Simrad CP32
Navtex	Furuno NX300 (2010)
Electronic chart(s)	1 x
Navigation lights	yes

EQUIPMENT

Fixed windscreen	yes
Sprayhood	large type
Cockpit cover	yes
Cockpit cushions	yes
Cockpit table	yes
Boarding ladder	stainless steel



Deck shower	hot + cold
Anchor	CQR Plough
Anchor chain	Apprx. 40 mtr
Anchor 2	CQR Plough
Windlass	electrical Neco
Capstan	Neco
Outboard support	yes
Sea railing	wire
Grab rail (superstructure)	teak
Pushpit	yes
Pulpit	yes
Life raft	valise (or bag) Pacific
Life raft (pers)	6
Last life raft survey	2010
Lifejackets	yes
Lifebuoy	2 x
Danbuoy	yes
Fenders	yes
Mooring lines	yes
TV	with drop-down system Samsung HD20"
Radio-cd player	Kenwood
Sub-woofer	yes
Speakers in salon	yes
Clock - barometer	yes
Fire extinguisher	(2012)

RIGGING

Rigging	sloop
Standing rigging	wire
Brand mast	Proctor
Material mast	aluminium



Spreaders	2 x set
Mainsail cover	yes
Fully battened mainsail	yes
Jib	yes
Genoa	yes
Genoa I	yes
Genoa furler	Reckmann
Spinnaker	one with squeezer 2 x
Booster	yes
Stormjib	yes
Reefing System	slabreefing
Backstay adjuster	hydraulic Holmatro
Boomvang	mechanical
Genoa sheetwinches	2 x Barient 36ST
Halyard winches	+ 2 x Barient 26 3 x Lewmar 40ST
Reefing winch	1 x Andersen 46ST
Spi-pole	aluminium
Extra info	Walder boom-brake



TRINTELLA 42



TRINTELLA 42



TRINTELLA 42



TRINTELLA 42



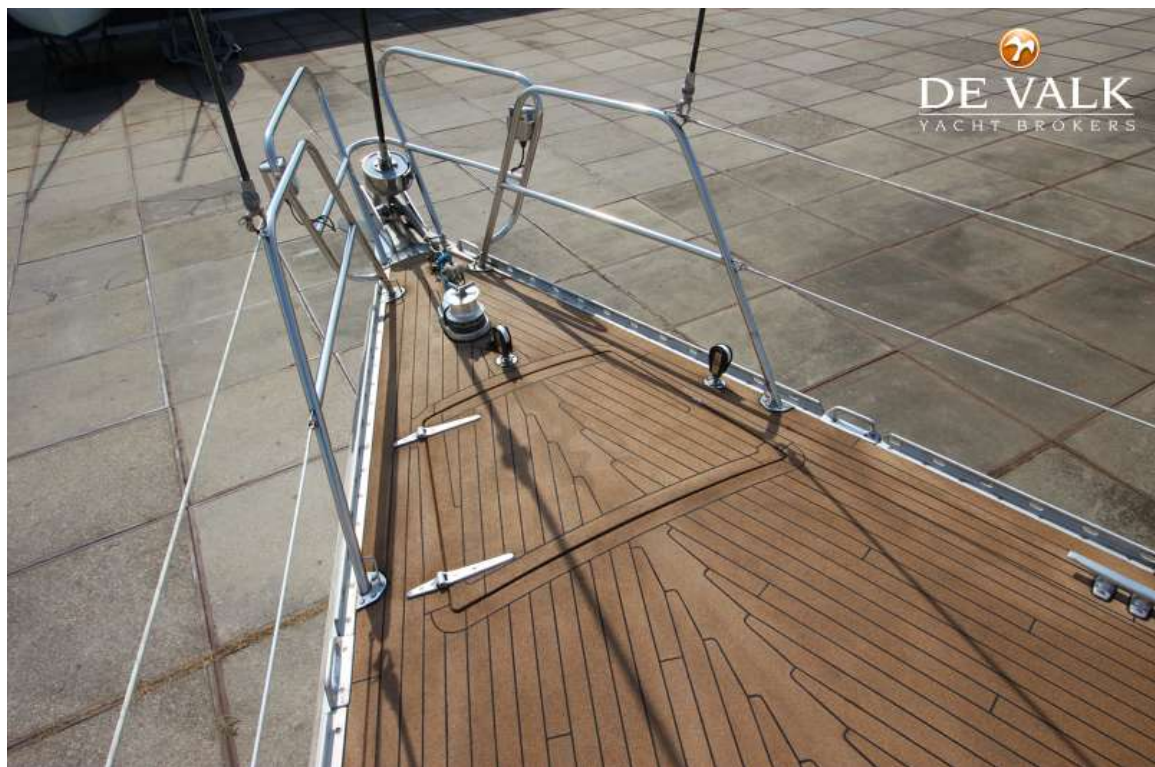
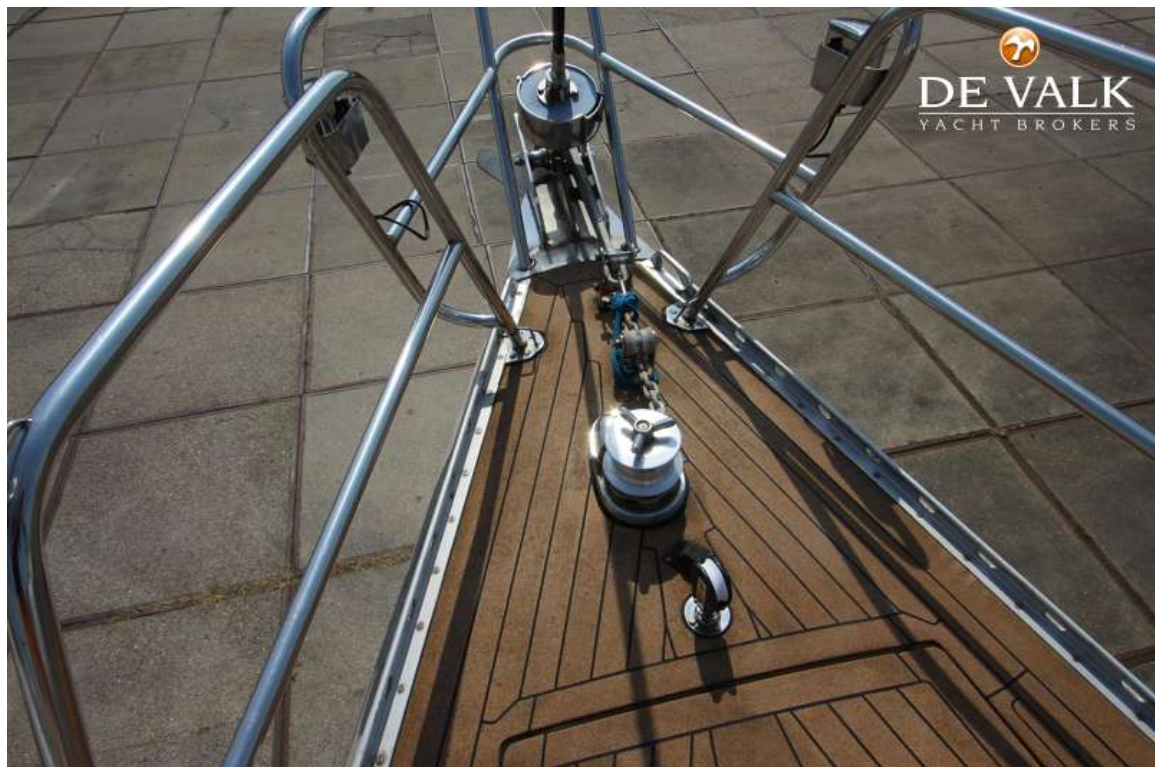
TRINTELLA 42



TRINTELLA 42



TRINTELLA 42



TRINTELLA 42



TRINTELLA 42



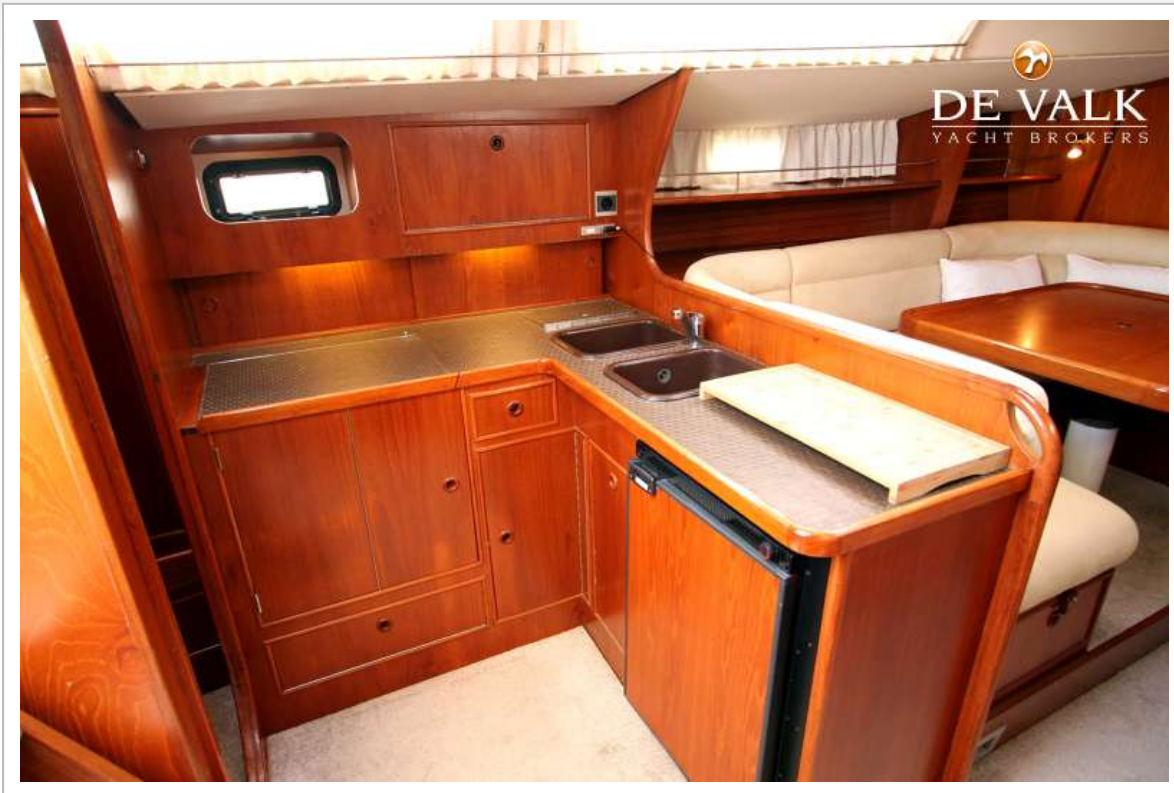
TRINTELLA 42



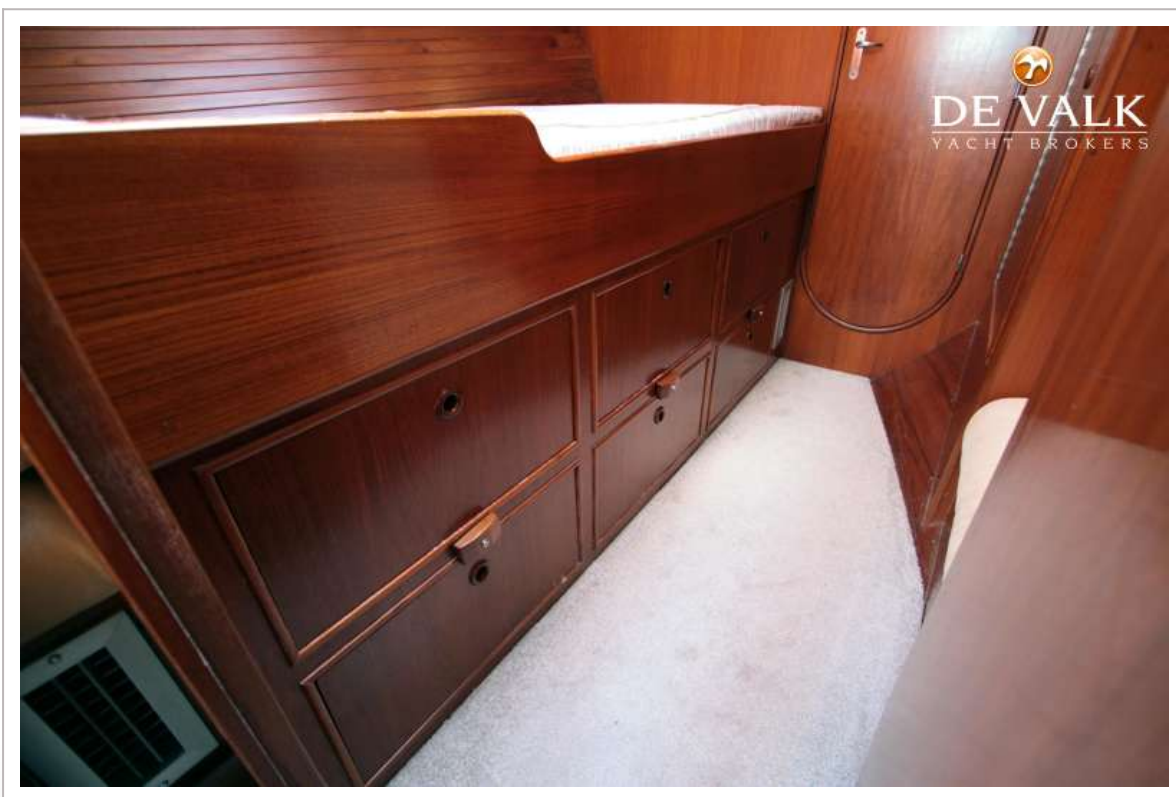
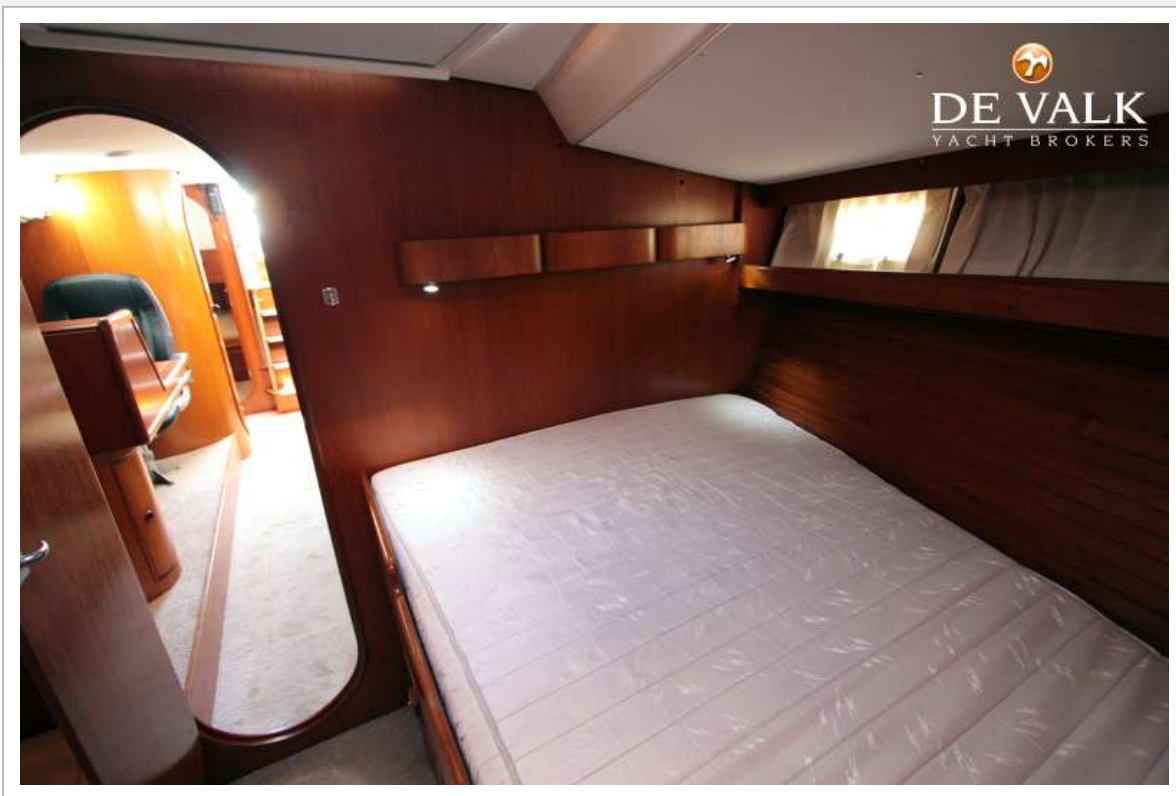
TRINTELLA 42



TRINTELLA 42



TRINTELLA 42



TRINTELLA 42



TRINTELLA 42

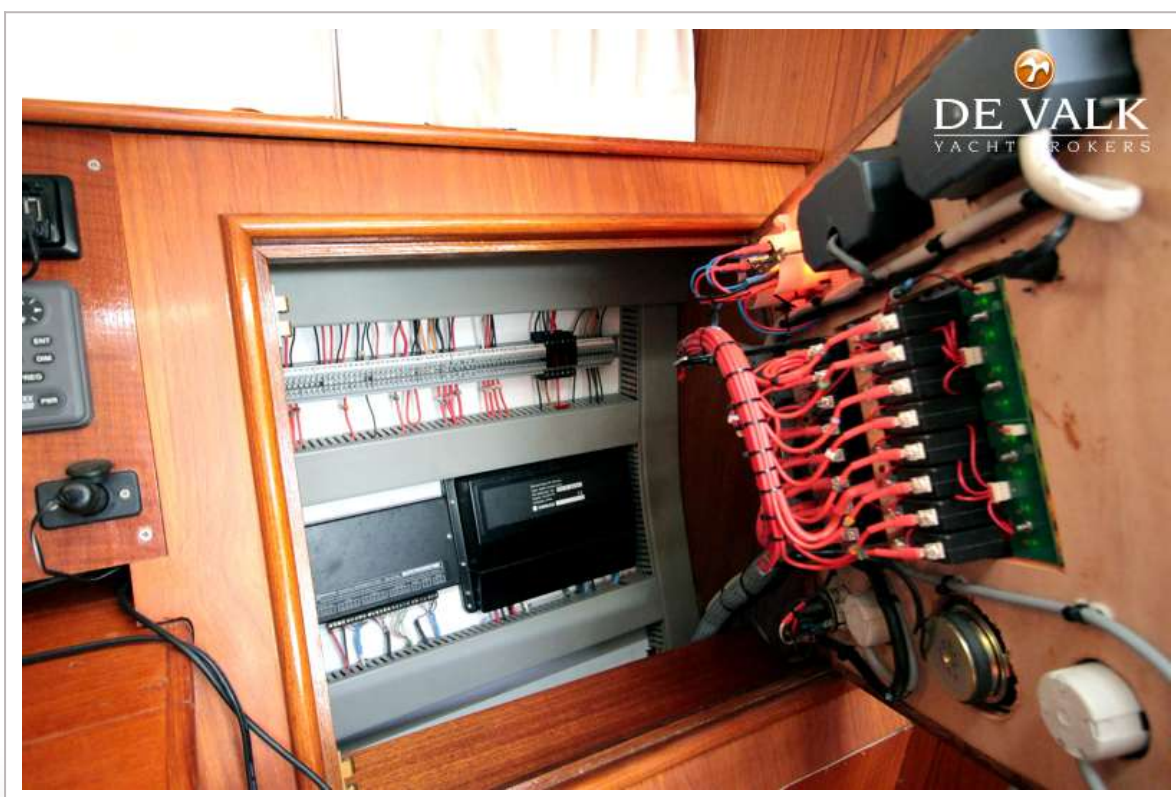


TRINTELLA 42

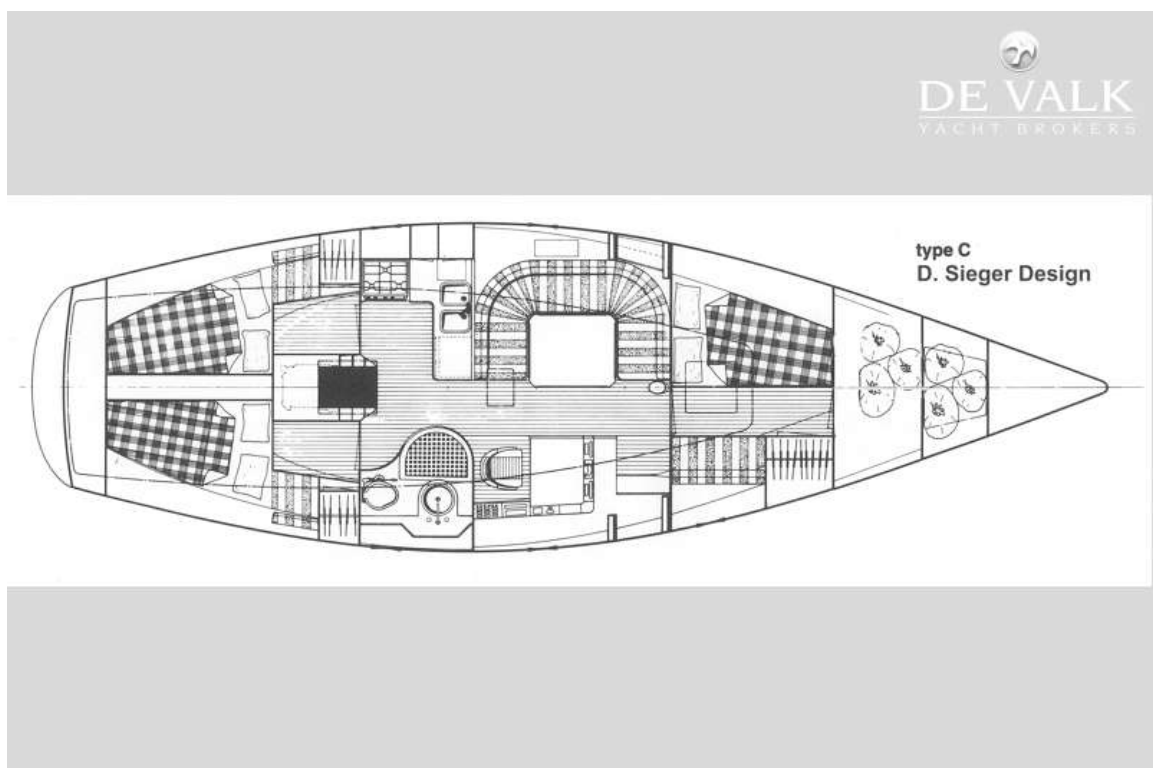


TRINTELLA 42





TRINTELLA 42



TRINTELLA 42

