



FAIRLINE PHANTOM 40



FAIRLINE PHANTOM 40

BROKER'S COMMENTS

The Fairline Phantom 40 was the smallest model in the latest Fairline Phantom range but that does not mean it is a small boat! On the contrary, with 2 cabins with ensuite, large galley, comfortable saloon with extra pullout bed, cozy cockpit and spacious flybridge, it ticks all the boxes for a modern day flybridge cruiser. Twin 370hp Volvo Penta diesel engines on shafts provide ample performance and economical fuel consumption. This Fairline Phantom 40 was delivered new in the Netherlands and has only had Dutch owners.

Nick Lanting

SPECIFICATIONS

Dimensions	12.53 x 3.95 x 0.97 (m)	Builder	Fairline Boats
Built	2003	Cabins	2
Material	GRP	Berths	6
Engine(s)	2 x Volvo Penta TAM63P diesel	Hp/Kw	2 x 370.00 (hp), 271.00 (kw)
Asking price	sold (VAT)	Lying	at sales office

CONTACT

Sales office	De Valk Sint Annaland B.V.	Telephone	+31 (0)166 601 000
Address	Koelhuisweg 4 4697 RM Sint Annaland NL	E-mail	sintannaland@devalk.nl

DISCLAIMER

These particulars are given in good faith as supplied but cannot be guaranteed.



FAIRLINE PHANTOM 40

GENERAL

Model	FAIRLINE PHANTOM 40
Type	motor yacht
LOA (m)	12,53
LWL (m)	10,10
Beam (m)	3,95
Draft (m)	0,97
Air draft (m)	4,53
Air draft min (m)	3,40
Headroom (m)	1,92
Year built	2003
Launched	2004
Builder	Fairline Boats
Country	Great Britain
Designer	Bernard Olesinski
Displacement (t)	11,6
CE norm	B
Hull material	GRP
Hull colour	white
Hull shape	deep-V
Superstructure material	GRP
Rubbing strake	stainless steel + rubber insert
Deck material	GRP
Deck finish	non-skid moulded in
Superstructure deck finish	non-skid moulded in
Cockpit deck finish	teak
Window frame	aluminium
Window material	tempered glass
Deckhatch	1 x
Portholes	stainless steel
Flybridge	yes



FAIRLINE PHANTOM 40

Flybridge cover	yes
Flybridge cockpit cover	For helm and seats
Radar arch	non collapsible
Fuel tank (litre)	500
Fuel tank 2 (litre)	500
Level indicator (fuel tank)	yes
Freshwater tank (litre)	polyethylene 450
Level indicator (freshwater)	yes
Blackwater tank (litre)	GRP
Level indicator (blackwater)	yes
Blackwater tank extraction	deck extraction + pump
Wheel steering	hydraulic
Inside helm position	yes
Flybridge helm position	hydraulic
Extra info	Front window sun cover

ACCOMMODATION

Cabins	2
Berths	6
Interior	cherry American Cherry/Eucalyptus high gloss
Floor	carpet Gigant Natural
Open cockpit	yes
Saloon	Ivory Leather upholstery
Headroom saloon (m)	1,92
Heating	diesel ducted hot air Eberspächer D5LC
Chart table	yes
Convertible berth	2,05 x 1,00 m (in saloon)
Sliding door to cockpit	yes
Galley	yes
Countertop	plastic Black Ice Avonite
Sink	stainless steel 1 x



FAIRLINE PHANTOM 40

Cooker	calor gas EMO 2-burner
Microwave/oven combi	Sharp
Fridge	Isotherm
Hot water system	220V + engine
Water pressure system	electrical
Owners cabin	French bed Headroom 1,90 m
Bed length (m)	1,95 x 1,60
Wardrobe	hanging/drawers/shelves
Bathroom	en suite Headroom 1,92 m
Toilet	en suite
Toilet system	electric Jabsco
Wash basin	in the bathroom
Shower	en suite Headroom 1,92 m
Guest cabin 1	twin single Headroom 2,11 m
Bed length (m)	1,90 x 0,65 + 1,80 x 0,60 m
Wardrobe	hanging and shelves
Bathroom	en suite Headroom 1,88 m
Toilet	en suite
Toilet system	electric Jabsco
Wash basin	in the bathroom
Shower	en suite Headroom 1,86 m
Flybridge	yes
Wet bar	On flybridge, with fridge, griddle, sink, wastebin
Extra info	Internally sprung mattresses

MACHINERY

No of engines	2
Make	Volvo Penta
Type	TAMD63P
HP	370
kW	271,00



FAIRLINE PHANTOM 40

Fuel	diesel
Year installed	2003
Maximum speed (kn)	25,00
Cruising speed (kn)	22,00
Engine hours	1800
Engine cooling system	freshwater heat exchanger
Drive	shaft
Engine controls	electrical Volvo Penta EC
Gearbox	hydraulic
Bowthruster	electric Side-Power 6 hp
Sternthruster	electric Side-Power 8 hp
Exhaust	watercooled
Propeller type	fixed
Propeller blades	4
Propeller shaft material	stainless steel
Shaft lubrication	water
Manual bilge pump	1 x
Electric bilge pump	3 x
Bilge alarm	yes
Electrical installation	12V & 220V
Batteries	6 x
Start battery	2 x 210 Ah (2015/2016)
Service battery	4 x 210 Ah (2015/2016)
Sternthruster battery	Optima Yellow
Battery monitor	Mastervolt
Battery charger	Mastervolt Chargemaster Plus 12/100-3
Inverter	Mastervolt Mass Sine 12/2000
Diode battery combiners	yes
Shorepower	with cable
Trimtabs	yes
Extra info	Remote control for bow and stern thruster



NAVIGATION

Compass	Ritchie
Compass on flybridge	Ritchie
Electric compass	In autopilot
Depth sounder/log	Raymarine ST60 TriData
Repeater	Raymarine S60 TriData
VHF	Raymarine
Autopilot	Raymarine ST6001
Rudder angle indicator	VDO
Radar/GPS/plotter	Raymarine RL70C + repeater
Electronic chart(s)	1 x
Navigation lights	yes
Searchlight	Guest, niet 100% weekend
Extra info	Raymarine 400G gyro course computer

EQUIPMENT

Fixed windscreen	yes
Cockpit cover	Captain Navy (blue)
Cockpit cushions	White with blue trim
Bathing platform	yes
Boarding ladder	stainless steel
Transom door	yes
Gangway	Besenzoni 150 kg electric/hydraulic
Deck shower	Hot and cold
Anchor	Delta
Anchor chain	yes
Windlass	electrical Lewmar
Capstan	On anchor winch
Sea railing	stainless steel
Grab rail (superstructure)	stainless steel
Pulpit	yes



FAIRLINE PHANTOM 40

Lifebuoy	yes
Wiper	2 x
Window heating	Through Eberspächer heating
Horn	electric
Fenders	yes
Mooring lines	yes
TV	In saloon
Radio-cd player	JVC
DVD player	yes
iPod connection	+ iPod
Cockpit speakers	2 x on flybridge
Speakers in salon	2 x
Fire extinguisher	yes
Extinguisher in engine room	yes
Auto extinguisher system	yes
Extra info	Extra white exterior lights on bathing platform and flybridge



FAIRLINE PHANTOM 40



FAIRLINE PHANTOM 40



FAIRLINE PHANTOM 40



FAIRLINE PHANTOM 40



FAIRLINE PHANTOM 40



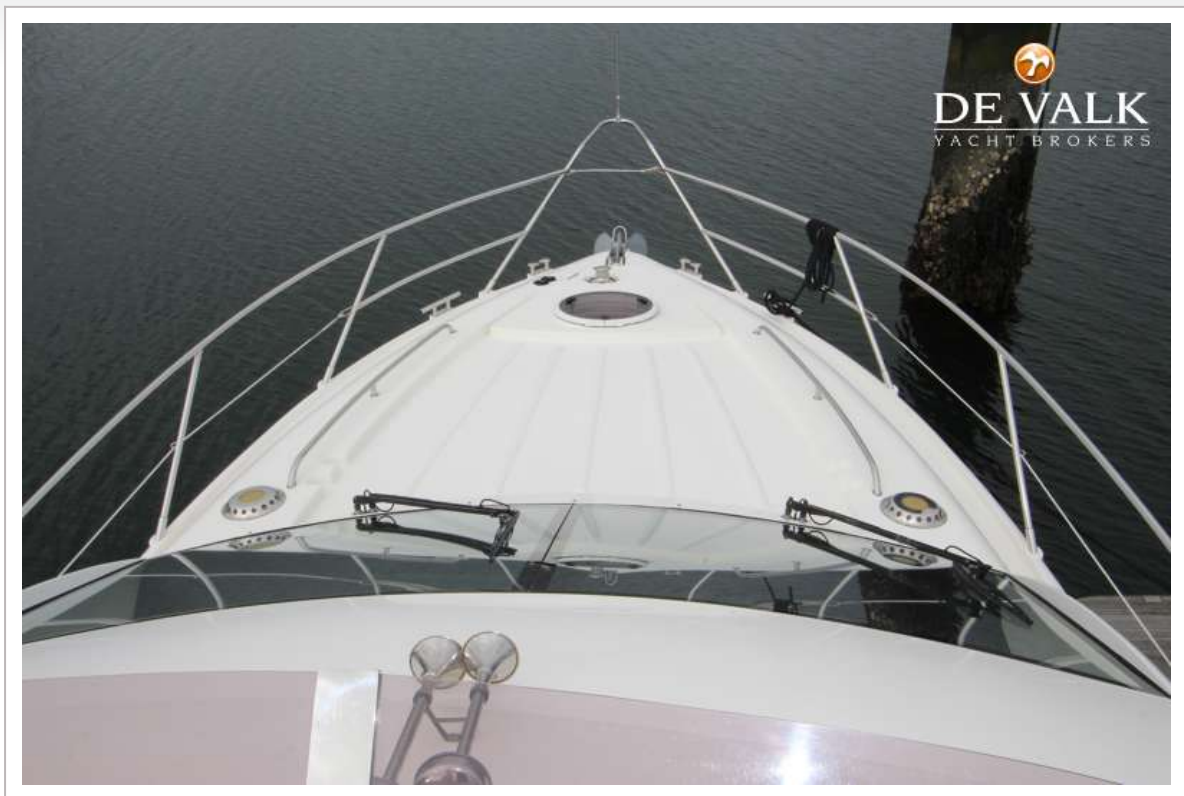
FAIRLINE PHANTOM 40



FAIRLINE PHANTOM 40



FAIRLINE PHANTOM 40



FAIRLINE PHANTOM 40



FAIRLINE PHANTOM 40



FAIRLINE PHANTOM 40



FAIRLINE PHANTOM 40



FAIRLINE PHANTOM 40



FAIRLINE PHANTOM 40



FAIRLINE PHANTOM 40



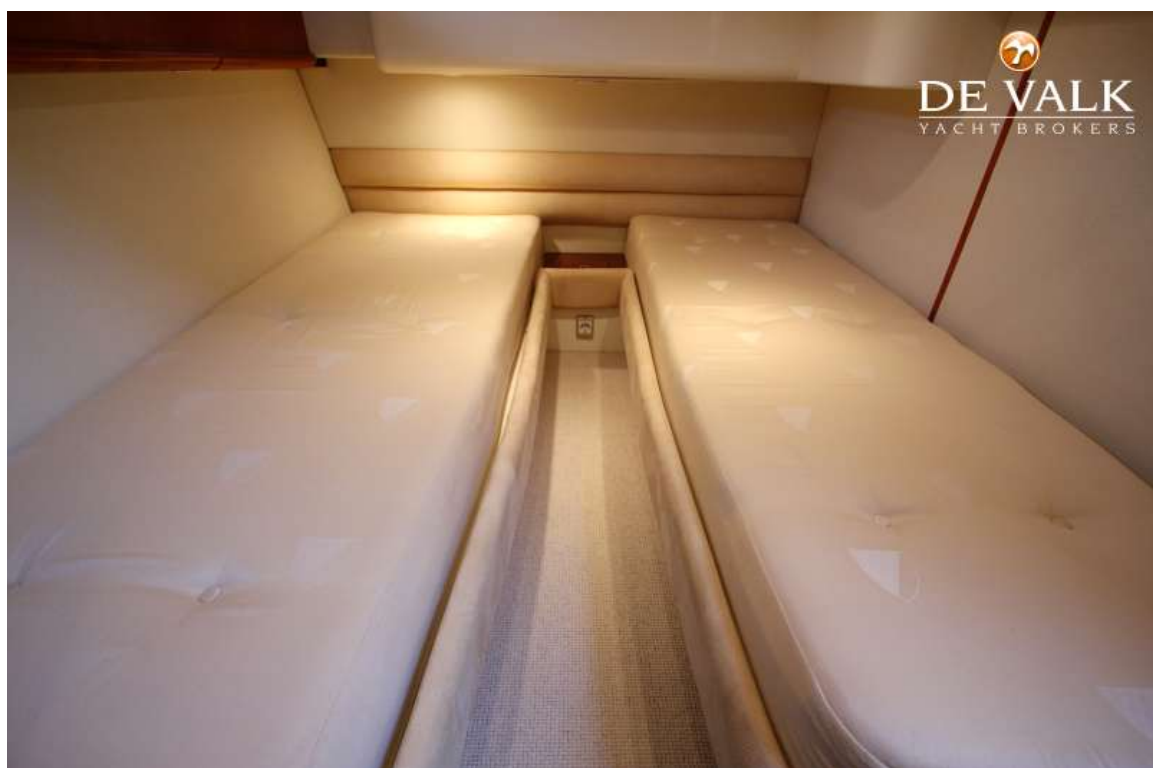
FAIRLINE PHANTOM 40



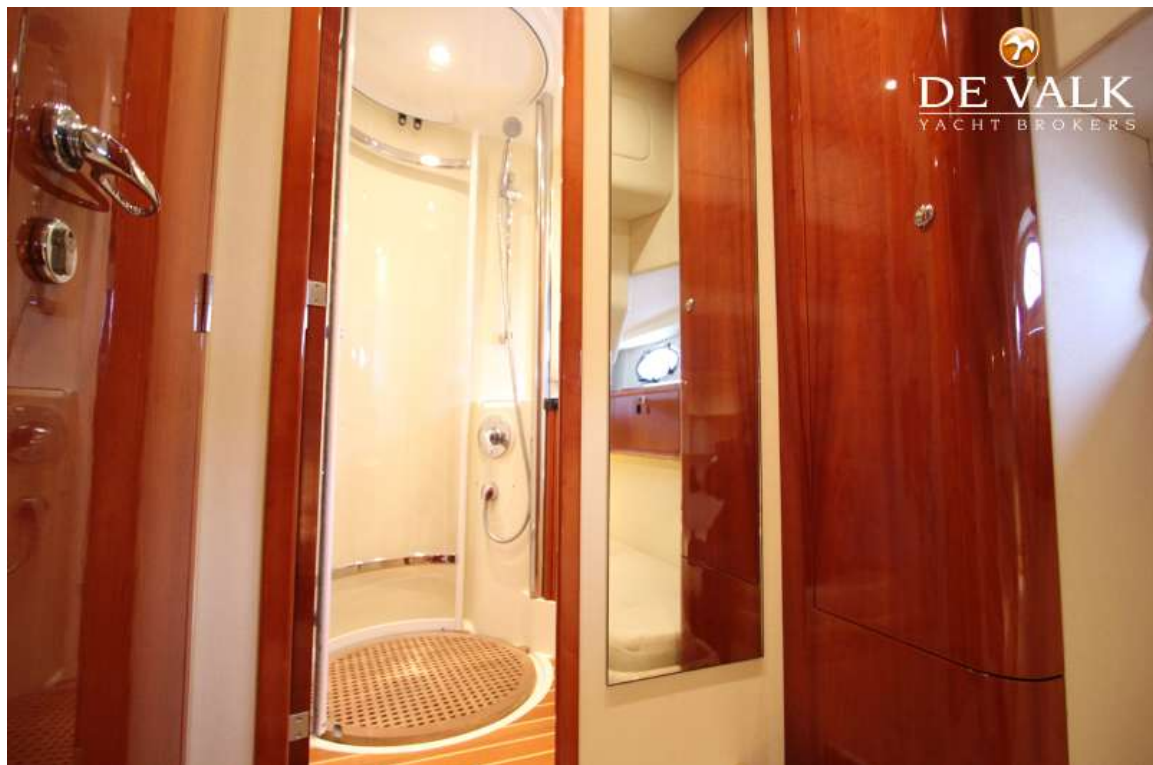
FAIRLINE PHANTOM 40



FAIRLINE PHANTOM 40



FAIRLINE PHANTOM 40



FAIRLINE PHANTOM 40

