



DE VALK
YACHT BROKERS



HALLBERG RASSY 31



DE VALK
YACHT BROKERS

HALLBERG RASSY 31

BROKER'S COMMENTS

Together with the Hallberg Rassy 34 model, the Hallberg Rassy 31 paved the way for the new line of Hallberg Rassy's designed by German Frers. Improving on sail performance, layout, balance and overall design. Without compromising the build and finishing quality the yard is famous for. Now you have the chance of owning the much appreciated HR31 with twin cabin layout. Her current owner invested in lots of renewals like teak deck, sails, rigging, electronics etc. For sale at an attractive price as well.

Marc Weijenberg

SPECIFICATIONS

Dimensions	9.62 x 3.30 x 1.70 (m)	Builder	Hallberg Rassy Varv AB
Built	1994	Cabins	2
Material	GRP	Berths	6
Engine(s)	1 x Volvo Penta MD2020 diesel	Hp/Kw	19.00 (hp), 13.00 (kw)
Asking price	sold (VAT)	Lying	at sales office

CONTACT

Sales office	De Valk Sint Annaland B.V.	Telephone	+31 (0)166 601 000
Address	Koelhuisweg 4 4697 RM Sint Annaland NL	E-mail	sintannaland@devalk.nl

DISCLAIMER

These particulars are given in good faith as supplied but cannot be guaranteed.



GENERAL

Model	HALLBERG RASSY 31
Type	sailing yacht
LOA (m)	9,62
Beam (m)	3,30
Draft (m)	1,70
Air draft (m)	16,75
Headroom (m)	1,86
Year built	1994
Builder	Hallberg Rassy Varv AB
Country	Sweden
Designer	German Frers
Displacement (t)	4,5
Ballast (tonnes)	lead 2
CE norm	A
Hull material	GRP
Hull colour	white
Hull shape	round-bilged
Keel type	fin keel
Superstructure material	GRP
Rubbing strake	yes
Deck material	GRP
Deck finish	teak (2018)
Cockpit deck finish	teak
Dorades	2 x
Window frame	aluminium
Window material	tempered glass
Deckhatch	1 x
Portholes	aluminium
Fuel tank (litre)	stainless steel 60
Freshwater tank (litre)	stainless steel 190



Blackwater tank (litre)	stainless steel
Blackwater tank extraction	deck extraction + uw line
Tiller	wooden

ACCOMMODATION

Cabins	2
Berths	6
Interior	mahogany
Floor	teak and holly
Saloon	with 2mtr benches
Headroom saloon (m)	1,86
Heating	diesel ducted hot air Webasto Airtop 24
Chart table	yes
Galley	yes
Countertop	plastic
Sink	2 x
Cooker	calor gas Eno (3 burner)
Oven	Eno
Fridge	12v Frigomatic
Water pressure system	manual
Owners cabin	v-bed
Bed length (m)	2,04
Wardrobe	hanging and shelves
Bathroom	shared I
Toilet	shared
Toilet system	manual
Wash basin	in the bathroom
Guest cabin 1	double bed
Bed length (m)	2,15 x 1,62
Wardrobe	hanging and shelves



MACHINERY

No of engines	1
Make	Volvo Penta
Type	MD2020
HP	19
kW	13,00
Fuel	diesel
Year installed	1994
Maximum speed (kn)	7,00
Cruising speed (kn)	6,00
Consumption (l/hr)	2,00
Engine cooling system	freshwater heat exchanger
Drive	sail-drive
Saildrive seal	Saildrive + seal new (2017)
Engine controls	bowden cable
Exhaust	watercooled
Propeller type	folding
Propeller blades	3
Manual bilge pump	yes
Electric bilge pump	yes
Electrical installation	12/220v
Start battery	1 x (2017)
Service battery	2 x (2017)
Battery charger	yes
Shorepower	with cable
Extra info	calor gas system approved till 2022

NAVIGATION

Compass	yes
Electric compass	via autopilot
Depth sounder	Raymarine i70 (2017)



Log	Raymarine i70 (2017)
Windset	Raymarine i70 (2017)
VHF	with cockpitconnection Shipmate RS8300
Autopilot	Raymarine ST4000+
GPS	Philips Mk8
Plotter	Raymarine E7 touchscreen (2017)
Electronis chart(s)	1 x
AIS transponder	Raymarine Class B
Navigation lights	yes

EQUIPMENT

Fixed windscreen	yes
Sprayhood	yes
Cockpit cover	(2018)
Winter cover	(2018)
Bathing platform	yes
Boarding ladder	stainless steel
Anchor	Bruce Stainless steel (2017)
Anchor chain	Stainless steel (2017)
Windlass	manual Muir (2017)
Sea railing	yes
Grab rail (superstructure)	teak
Pushpit	yes
Pulpit	yes
Lifebuoy	1 x
Fenders	yes
Mooring lines	yes
Radio-cd player	yes
Speakers in salon	yes
Clock - barometer	yes
Fire extinguisher	yes



RIGGING

Rigging	fractional
Standing rigging	wire (2017)
Brand mast	Seldén
Material mast	aluminium
Mainsail	Sailselect (2018)
Mainsail cover	+ Lazy Jacks (2018)
Genoa	with UV strip Sailselect (2018)
Genoa furler	Plastimo (2017)
Genoa cover	(2018)
Reefing System	quick-one-line-reefing
Backstay adjuster	tackle
Boomvang	tackle
Genoa sheetwinches	2 x Lewmar 40ST
Halyard winches	(2016) 2 x Lewmar 16ST
Spi-pole	aluminium (2018)
Extra info	alum. turnbuckle covers new running rigging (2017)



HALLBERG RASSY 31



HALLBERG RASSY 31



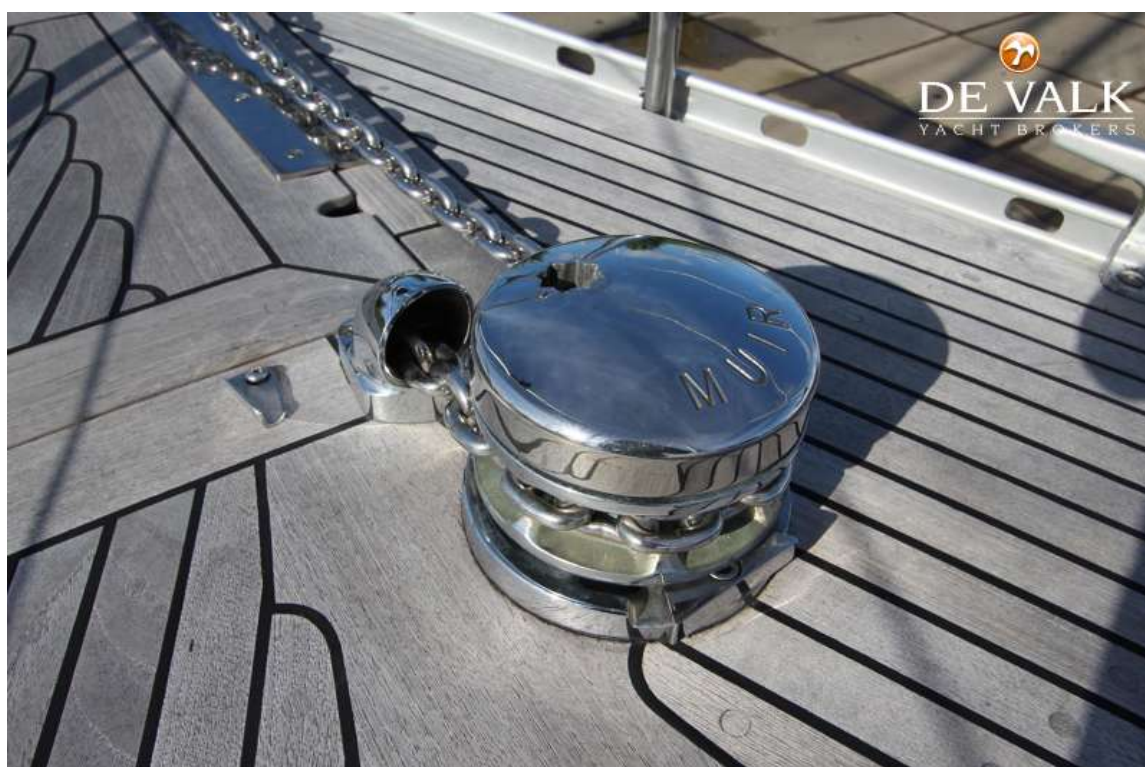
HALLBERG RASSY 31



HALLBERG RASSY 31



HALLBERG RASSY 31



HALLBERG RASSY 31



HALLBERG RASSY 31



HALLBERG RASSY 31



HALLBERG RASSY 31



HALLBERG RASSY 31



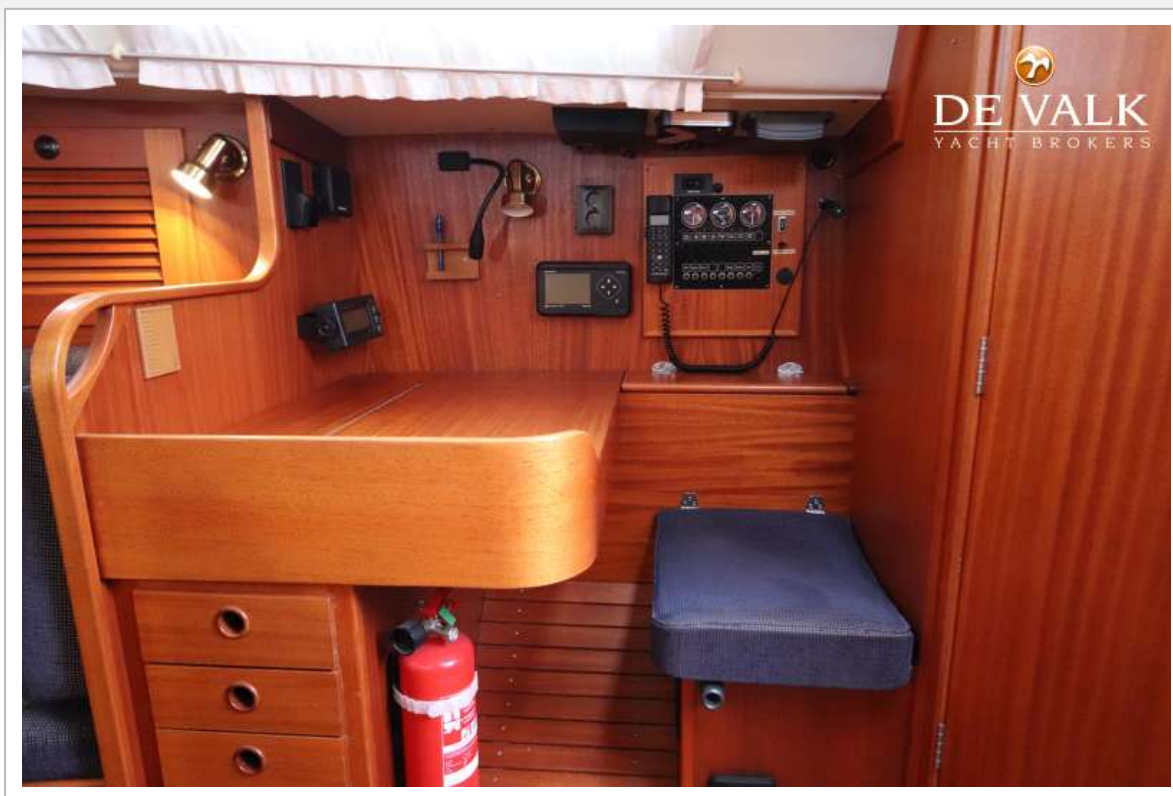
HALLBERG RASSY 31



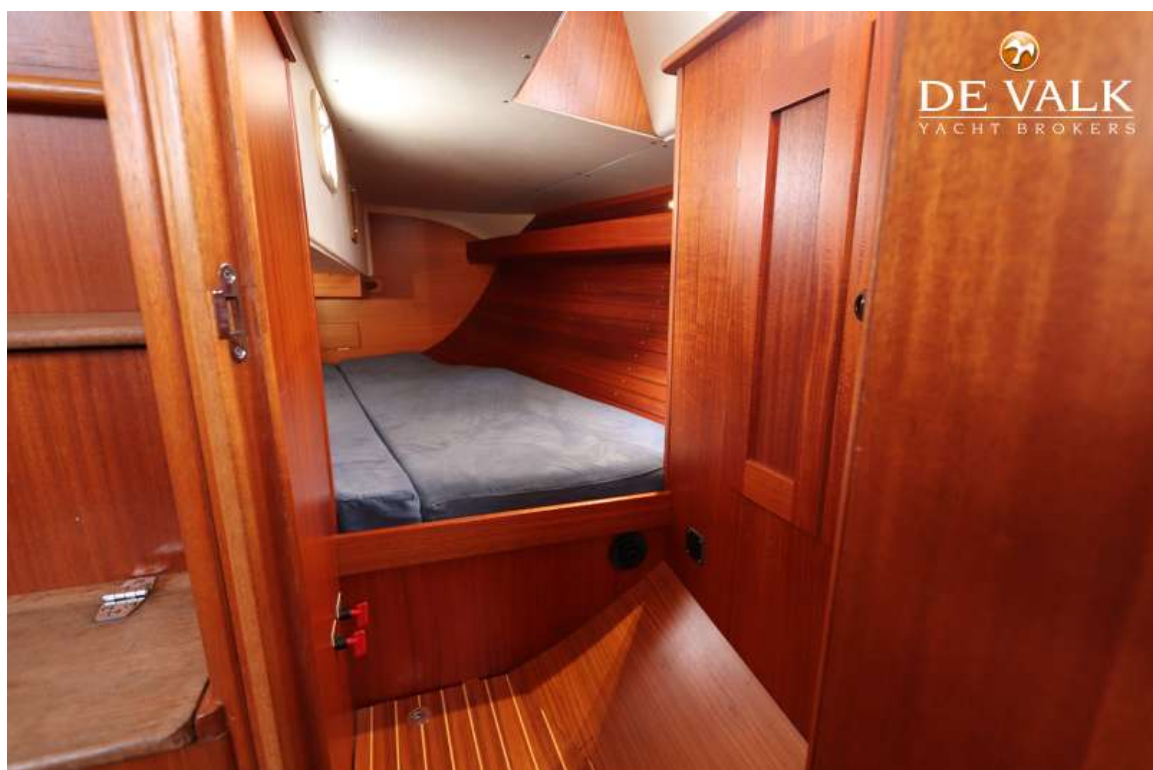
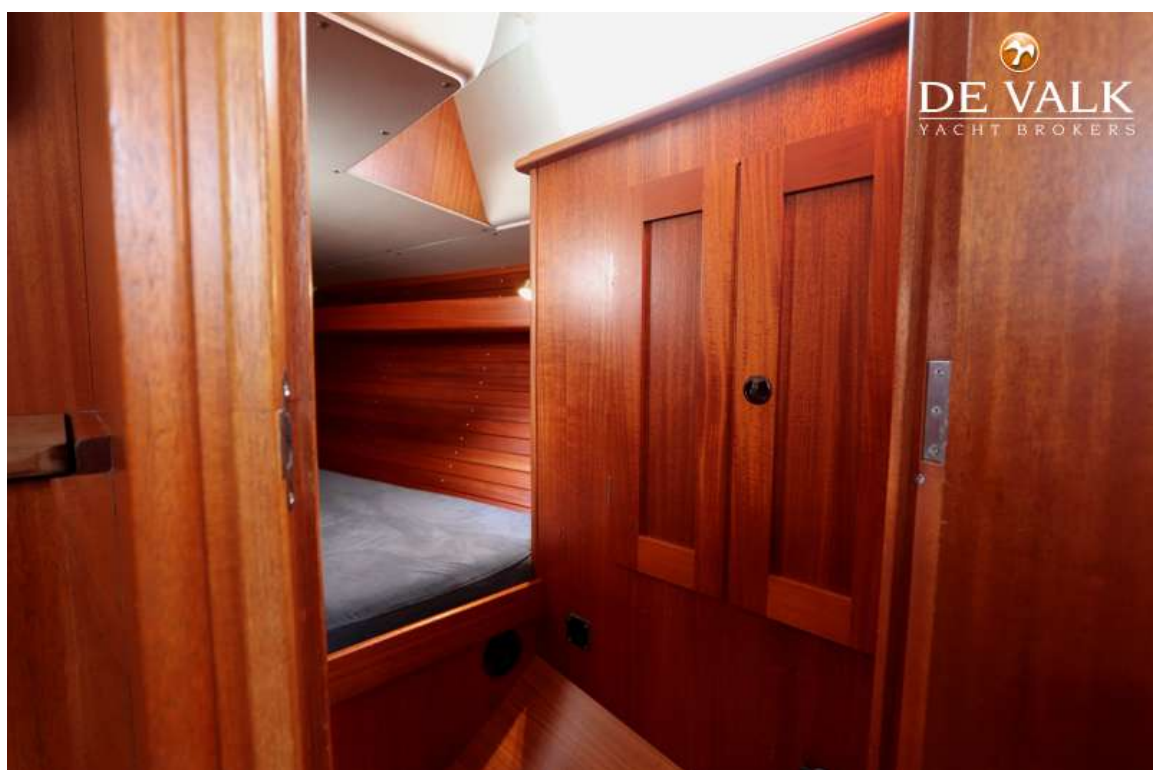
HALLBERG RASSY 31



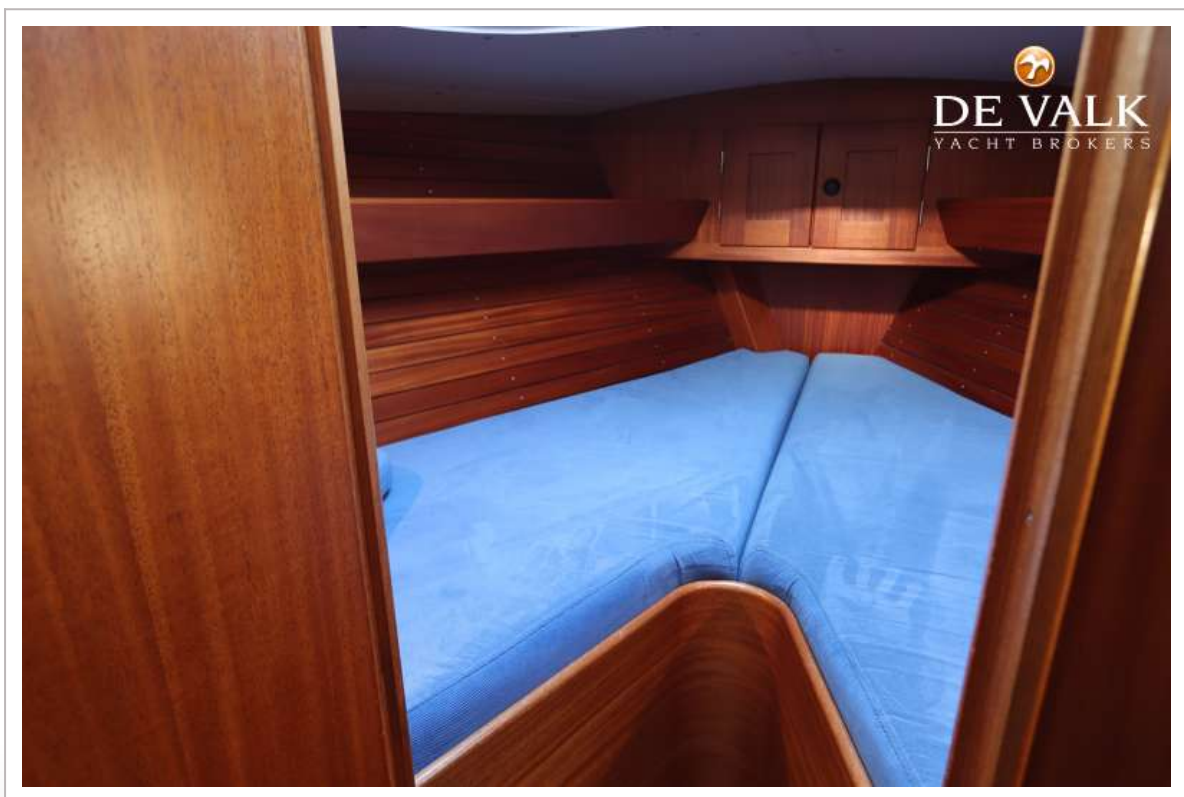
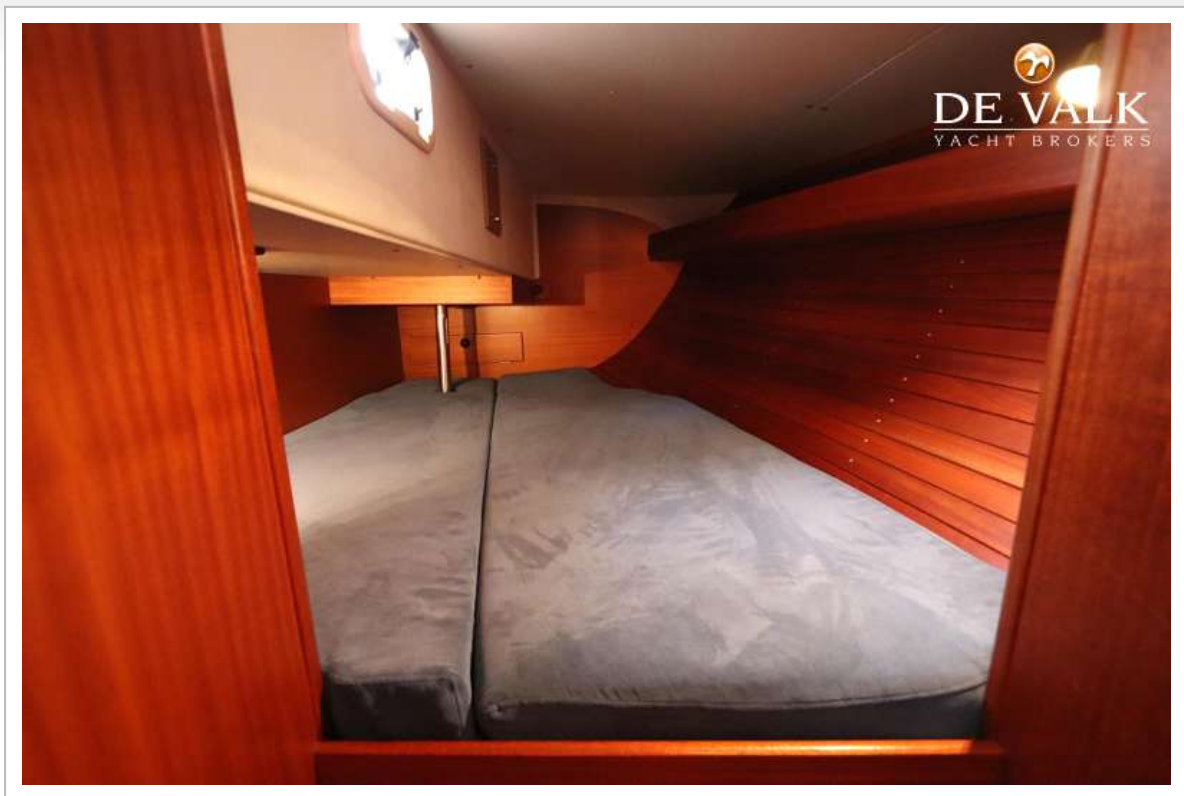
HALLBERG RASSY 31



HALLBERG RASSY 31



HALLBERG RASSY 31



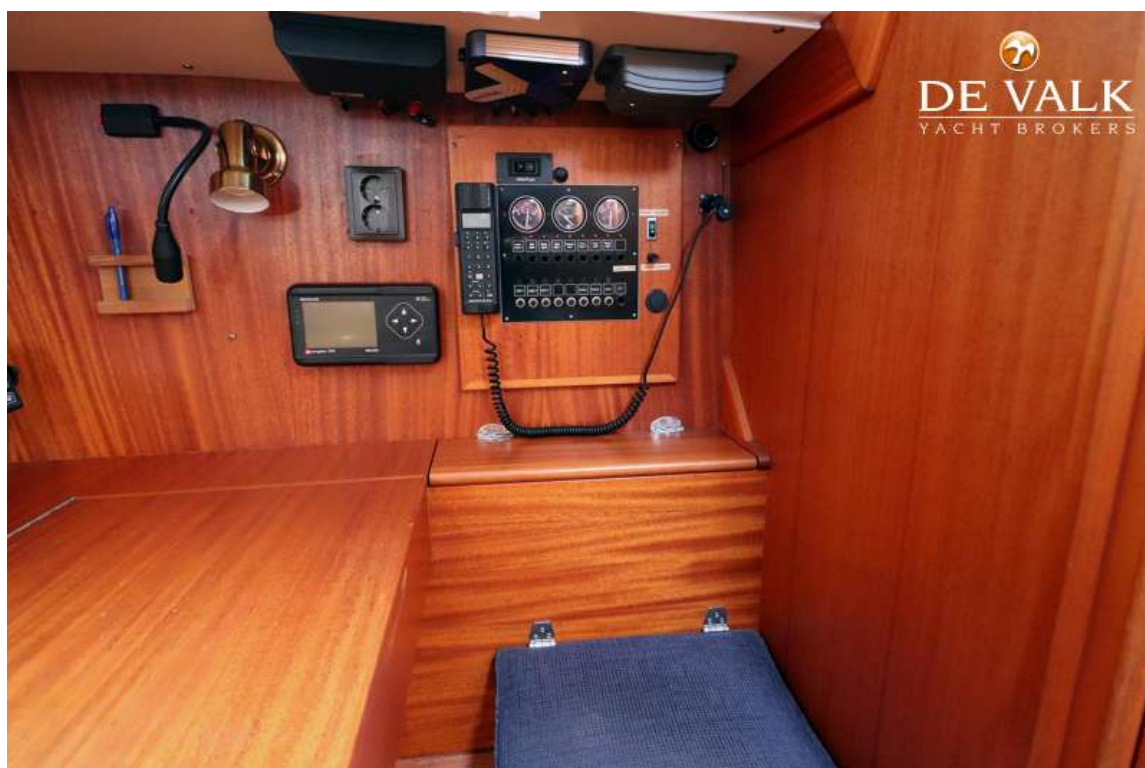
HALLBERG RASSY 31



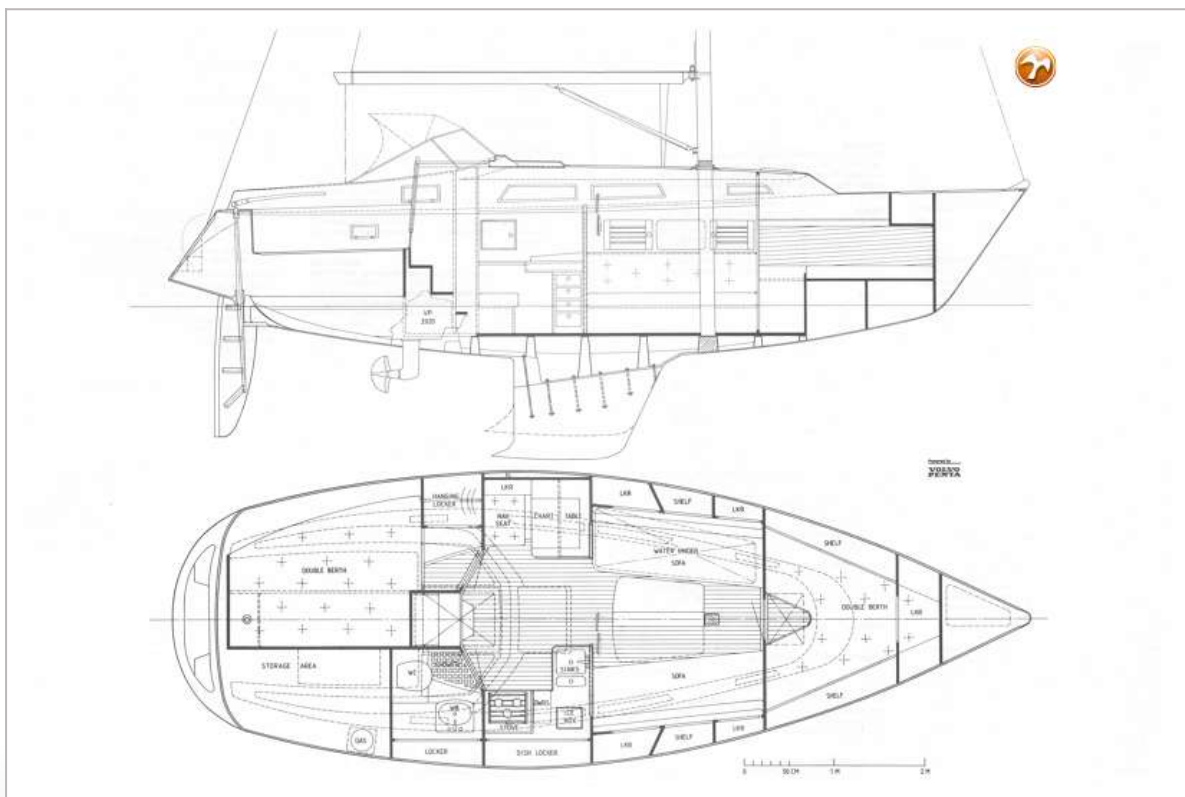
HALLBERG RASSY 31



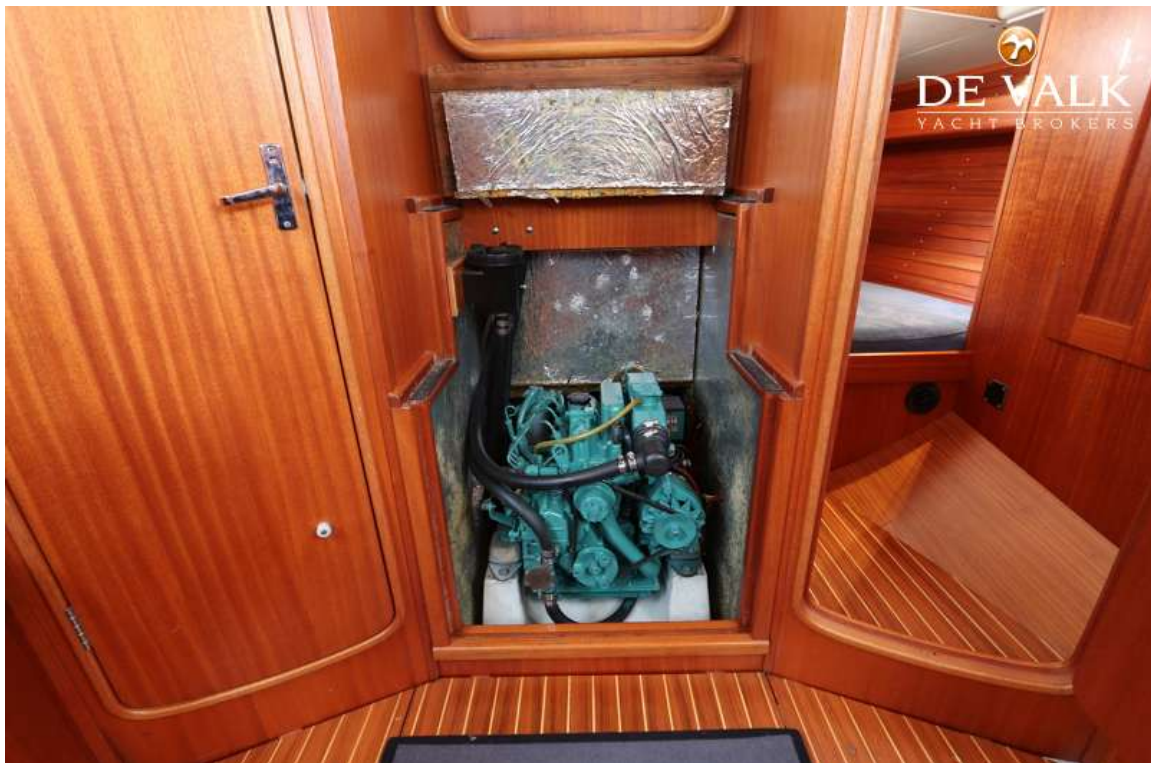
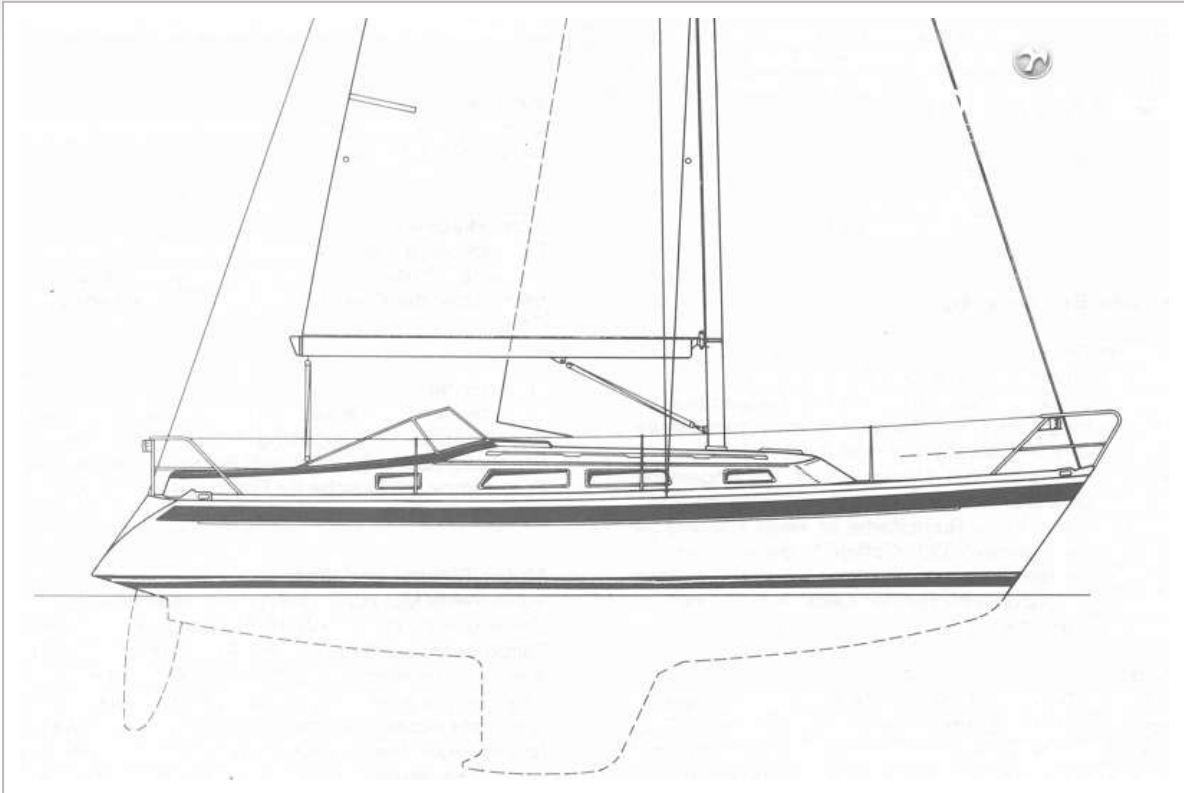
HALLBERG RASSY 31



HALLBERG RASSY 31



HALLBERG RASSY 31



HALLBERG RASSY 31

