



DE VALK

YACHT BROKERS



FISHER CATFISHER 28



DE VALK
YACHT BROKERS

FISHER CATFISHER 28

BROKER'S COMMENTS

Well taken care of, improved and now for sale, the current owner and his wife enjoyed being onboard for more than 20 years. Appreciating the Catfisher 28 versatility, handling (twin drive!), panoramic view in the pilothouse/deck-salon and onboard space, this unique Catamaran motorsailer has safely brought her owner to many places in Europe. She can be truly sailed anywhere; in- and offshore waters, canals (also in France) or beached with her shallow draft twin keels. This is the best maneuvering Fisher motorsailer you can buy. Including lots of equipment and recent renewed engine.

Marc Weijenberg

SPECIFICATIONS

Dimensions	8.53 x 3.90 x 1.03 (m)	Builder	Fairways Marine
Built	1977	Cabins	3
Material	GRP	Berths	7
Engine(s)	1 x Craftsman Marine 4.42 diesel	Hp/Kw	42.00 (hp), 30.87 (kw)
Asking price	sold (VAT)	Lying	contact sales office

CONTACT

Sales office	De Valk Sint Annaland B.V.	Telephone	+31 (0)166 601 000
Address	Koelhuisweg 4 4697 RM Sint Annaland NL	E-mail	sintannaland@devalk.nl

DISCLAIMER

These particulars are given in good faith as supplied but cannot be guaranteed.



FISHER CATFISHER 28

GENERAL

Model	FISHER CATFISHER 28
Type	motorsailer
LOA (m)	8,53
LWL (m)	7,45
Beam (m)	3,90
Draft (m)	1,03
Air draft (m)	13,80
Air draft min (m)	3,20
Headroom (m)	1,88
Year built	1977
Builder	Fairways Marine
Country	Great Britain
Designer	Freeman & Wyatt
Displacement (t)	3,9
Ballast (tonnes)	None
Hull material	GRP
Hull colour	brown
Hull shape	round-bilged
Keel type	bilge keels
Superstructure material	GRP
Rubbing strake	wood
Deck material	GRP
Deck finish	teak (2000)
Superstructure deck finish	teak
Cockpit deck finish	teak (2000)
Antifouling (year)	Coppercoat (2017)
Window frame	aluminium
Window material	tempered glass
Deckhatch	yes
Portholes	aluminium



Fuel tank (litre)	epoxy 150
Level indicator (fuel tank)	stainless steel 25
Freshwater tank (litre)	epoxy 150
Blackwater tank (litre)	epoxy 450
Blackwater tank extraction	deck extraction + pump
Inside helm position	hydraulic
Outside helm position	hydraulic
Emergency tiller	yes
More info on paintwork	2-comp paint (2016)
Extra info	LOA 9,10 (+1,30 mtr dinghy)

ACCOMMODATION

Cabins	3
Berths	7
Interior	teak
Floor	carpet
Open cockpit	yes
Pilot house/deck saloon	yes
Headroom saloon (m)	1,88-1,82
Heating	calorgas ducted hot air Trumatic E4000
Chart table	yes
Dinette to convert into berth	yes
Opening door to cockpit	yes
Galley	yes
Countertop	yes
Sink	stainless steel 1 x
Cooker	calor gas Smev 3 burner
Oven	Smev
Fridge	420 ltr Electrolux 12/220v/gas
Hot water system	220V + engine Isothemp (22ltr)
Water pressure system	electrical



FISHER CATFISHER 28

Owners cabin	double bed
Bed length (m)	2,00 x 1,20/1,40
Wardrobe	hanging and shelves
Bathroom	shared 1
Toilet	shared
Toilet system	manual Blake Lavac
Wash basin	in the bathroom
Shower	shared
Guest cabin 1	double bed
Bed length (m)	2,00 x 1,20
Wardrobe	hanging and shelves
Guest cabin 2	single bed
Bed length (m)	1,80 x 1,02
Wardrobe	shelves
Extra info	Truma gas-stop solenoid New upholstery (2016) Interior refitted and refined with extra teak Gauzes for windows and portholes

MACHINERY

No of engines	1
Make	Craftsman Marine
Type	4.42
HP	42,00
kW	30,87
Fuel	diesel
Year installed	2014
Maximum speed (kn)	6,5
Cruising speed (kn)	5,5
Consumption (l/hr)	2
Engine hours	800
Engine cooling system	freshwater heat exchanger
Drive	shaft



FISHER CATFISHER 28

Gearbox	hydraulic
Engine controls	bowden cable
Exhaust	watercooled
Propeller blades	2 x 3
Shaft lubrication	water
Manual bilge pump	2 x
Electric bilge pump	2 x
Electrical installation	12/220v
Start battery	1 x 105ah (2015)
Service battery	2 x 80ah (2015)
Battery monitor	Victron
Battery charger/inverter	12v/1600watt/70amp Victron Muliplex
Shorepower	with cable
Extra info	2018-2019 One shaft, prop and hydraulic drive renewed Hydraulic system on engine new installed 2014 Rotating ropecutter on stb shaft

NAVIGATION

Compass	+ Sestrel bearing compass Sestrel
Depth sounder	Incastec
Log	Incastec
VHF	Shipmate RS8300
Autopilot	Navico WP500
Radar	SL72 Pathfinder (2kW) Raymarine
GPS	Furuno GP-32
Navtex	Furuno NX-300
PC connection	yes
Navigation lights	yes

EQUIPMENT

Bimini	+ side panels
--------	---------------



FISHER CATFISHER 28

Cockpit cushions	yes
Cockpit table	yes
Boarding ladder	stainless steel
Gangway	yes
Deck shower	cold water
Anchor	Danforth
Anchor chain	20 mtr + 30 mtr line
Anchor 2	CQR Plough
Windlass	manual S&L
Dinghy	rigid hull
Davits	aluminum
Davits controls	manual
Sea railing	wire
Grab rail (superstructure)	teak
Pulpit	yes
Lifebuoy	1 x
Fenders	yes
Mooring lines	yes
Radio-cd player	Pioneer
Speakers in salon	yes
Clock - barometer	yes
Fire extinguisher	1 x
Extra info	Dinghy has small rig for sailing

RIGGING

Rigging	sloop
Standing rigging	wire
Brand mast	Proctor
Material mast	aluminium
Mast lowering system	yes
Mainsail	(2000)



FISHER CATFISHER 28

Mainsail cover	yes
Jib	(2000)
Genoa furler	yes
Gennaker	with squeezer (2004)
Staysail	(2000)
Reefing System	slabreefing
Primary sheet winch	2 x Lewmar 40C
Spi-pole	aluminium
Extra info	Forestay mounted on bowsprit for added handling/performance



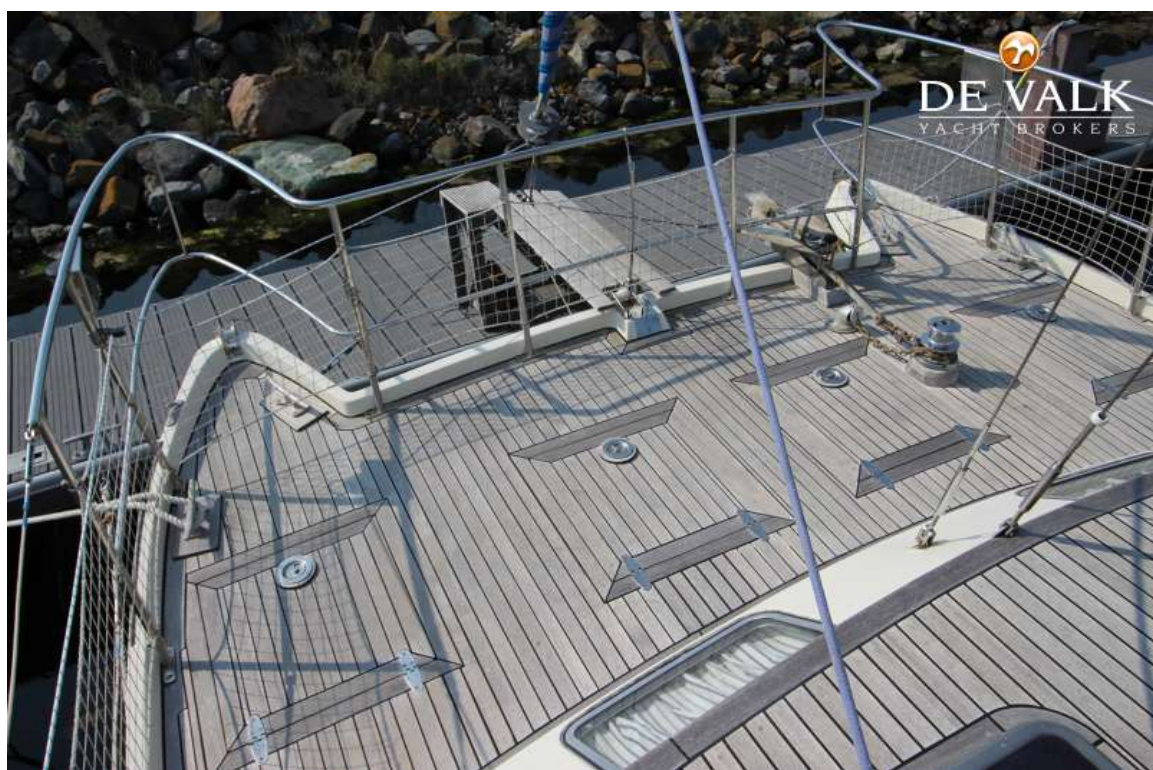
FISHER CATFISHER 28



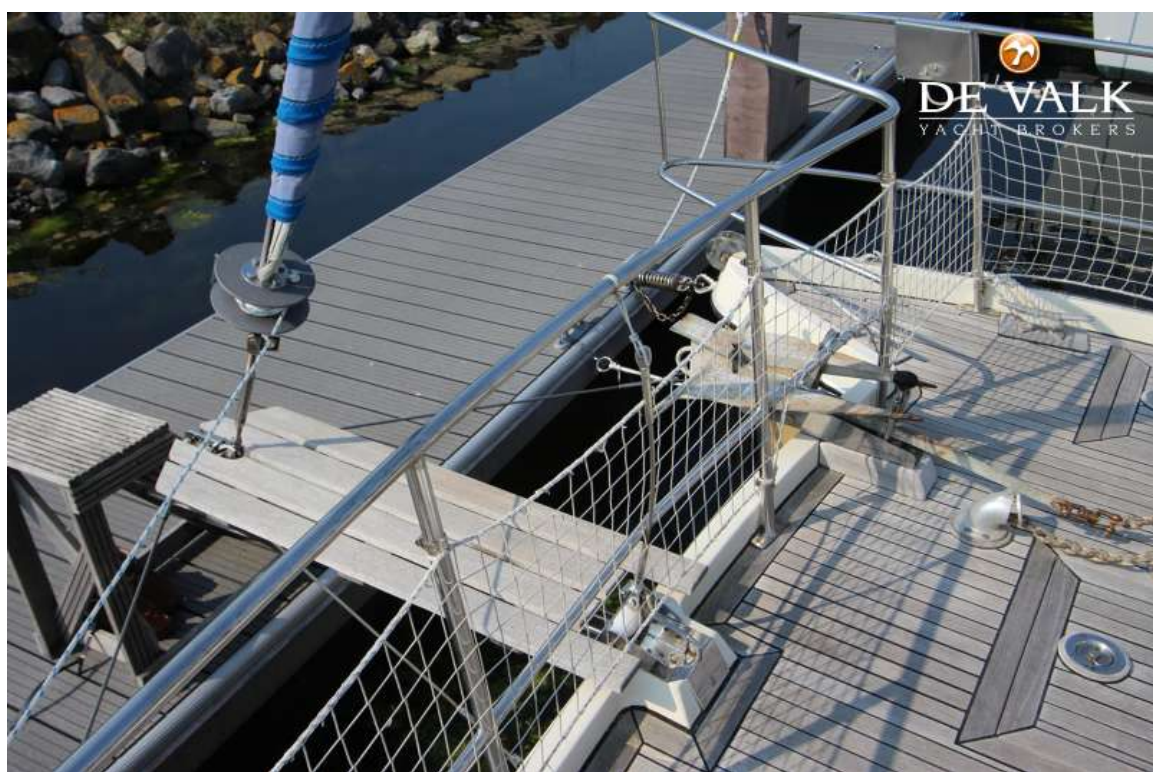
FISHER CATFISHER 28



FISHER CATFISHER 28



FISHER CATFISHER 28



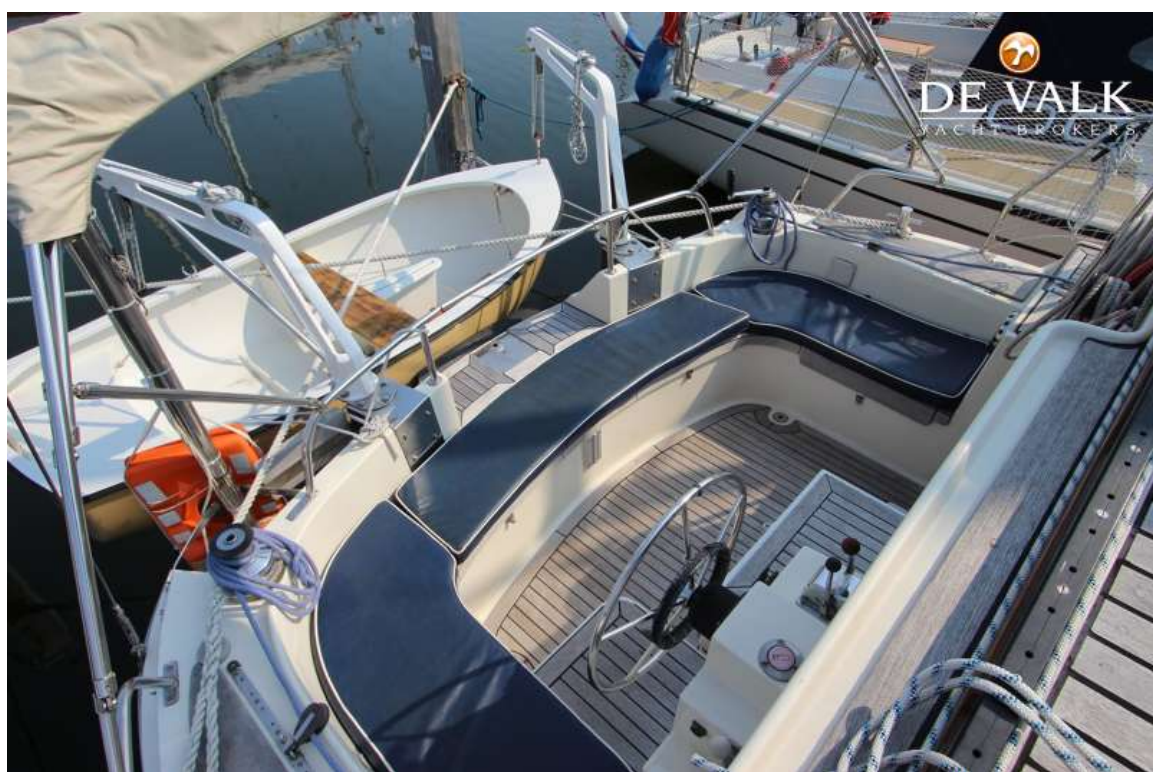
FISHER CATFISHER 28



FISHER CATFISHER 28



FISHER CATFISHER 28



FISHER CATFISHER 28



FISHER CATFISHER 28



FISHER CATFISHER 28



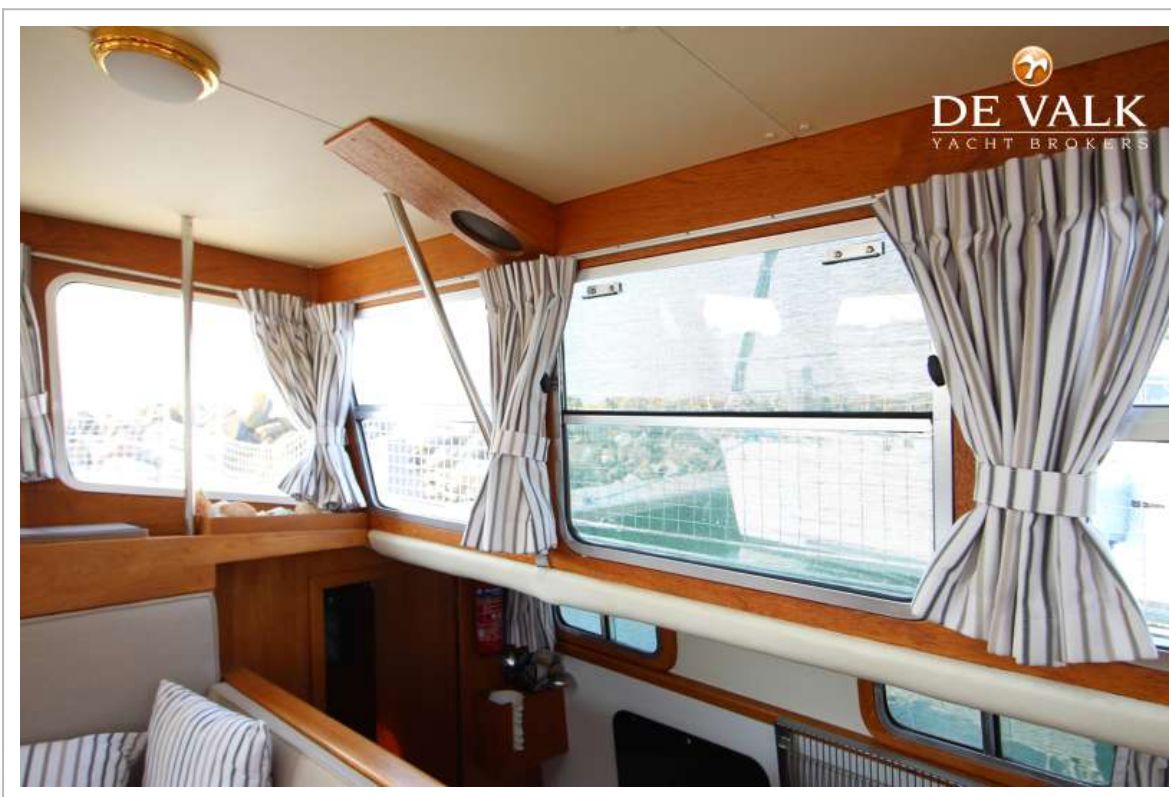
FISHER CATFISHER 28



FISHER CATFISHER 28



FISHER CATFISHER 28



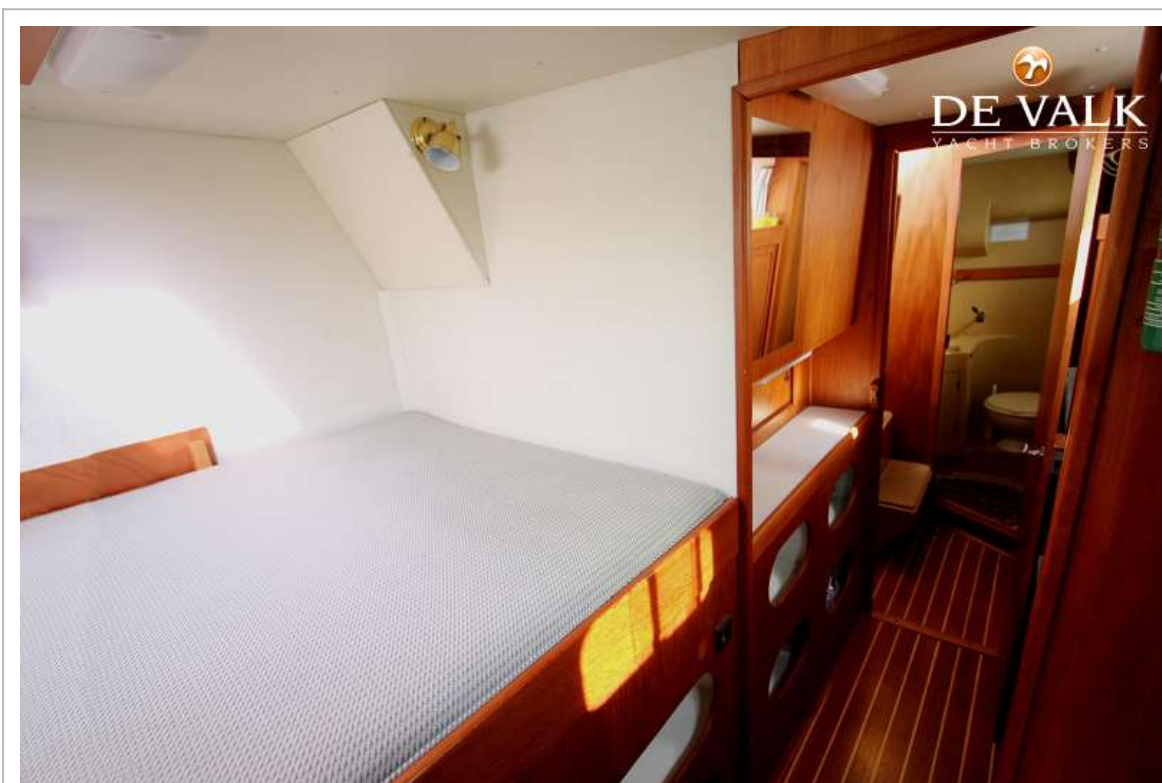
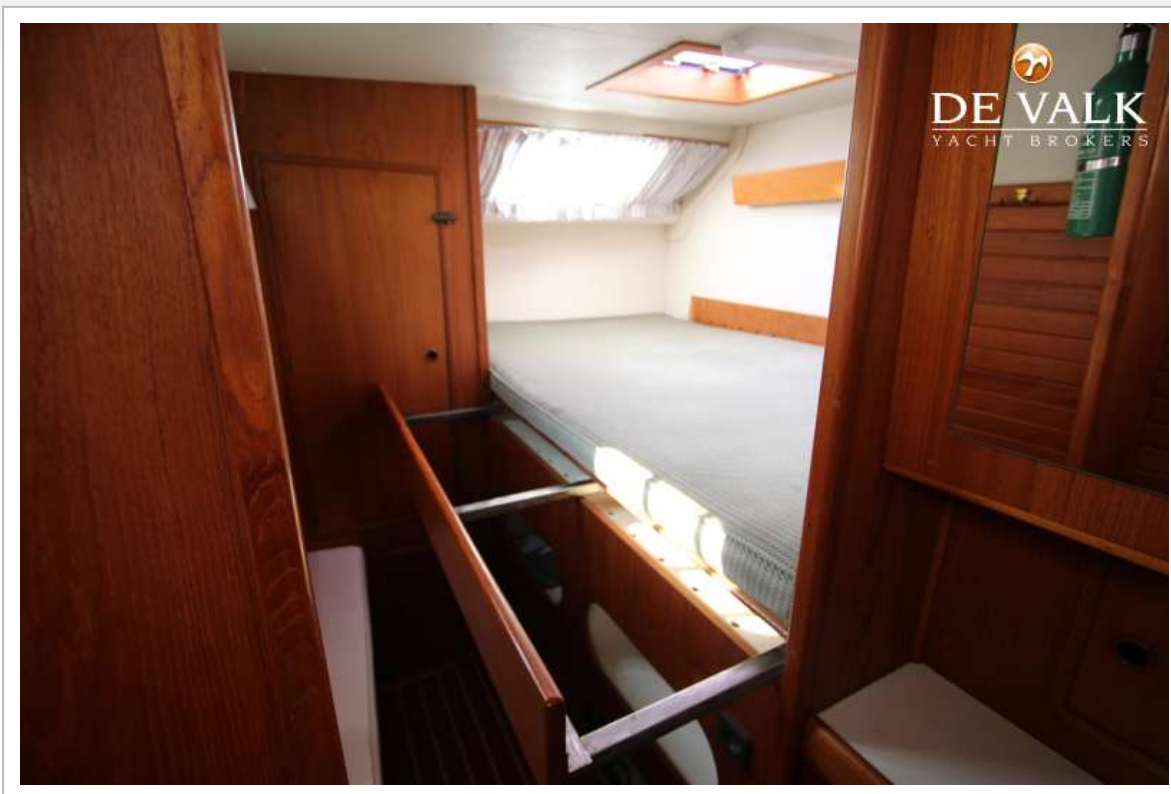
FISHER CATFISHER 28



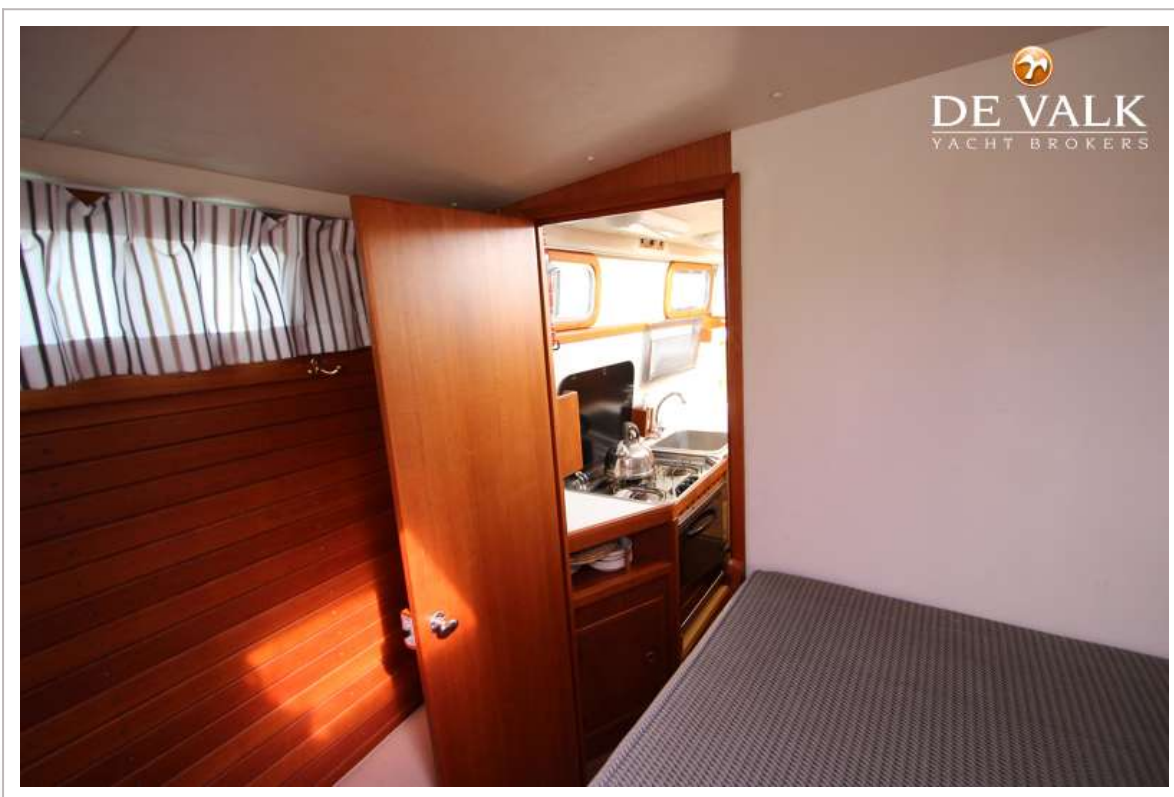
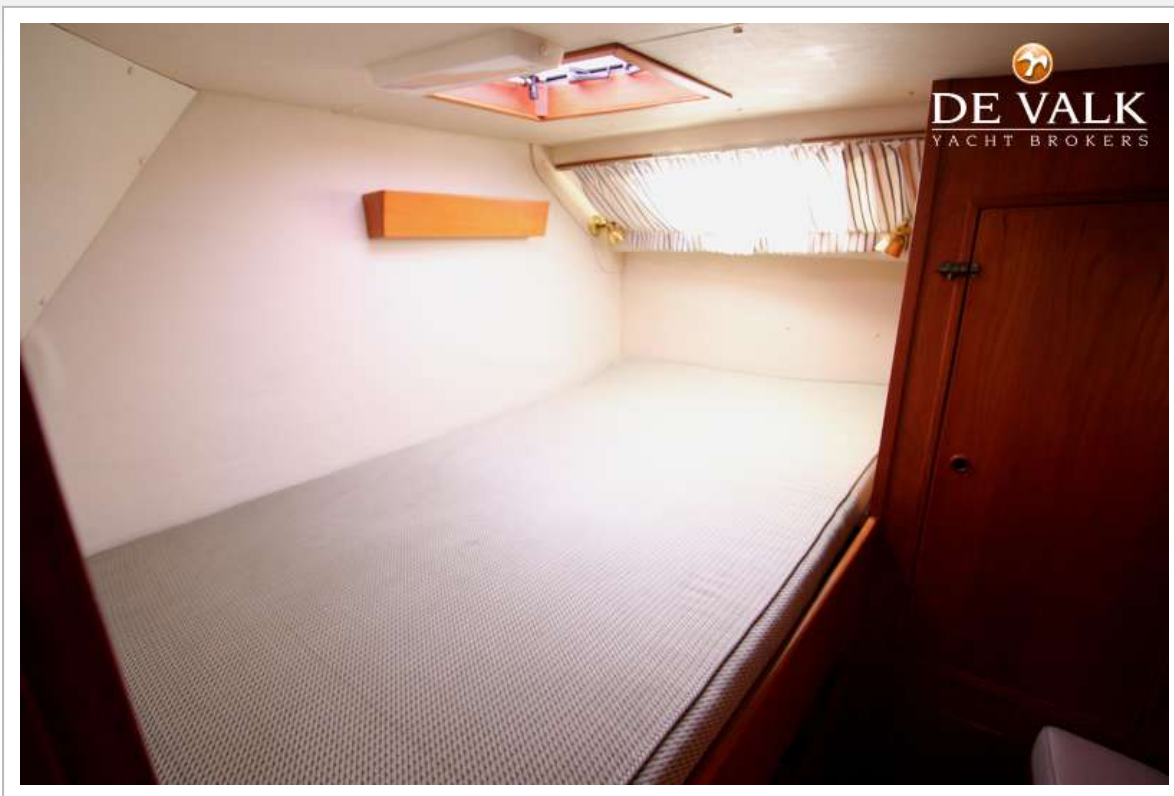
FISHER CATFISHER 28



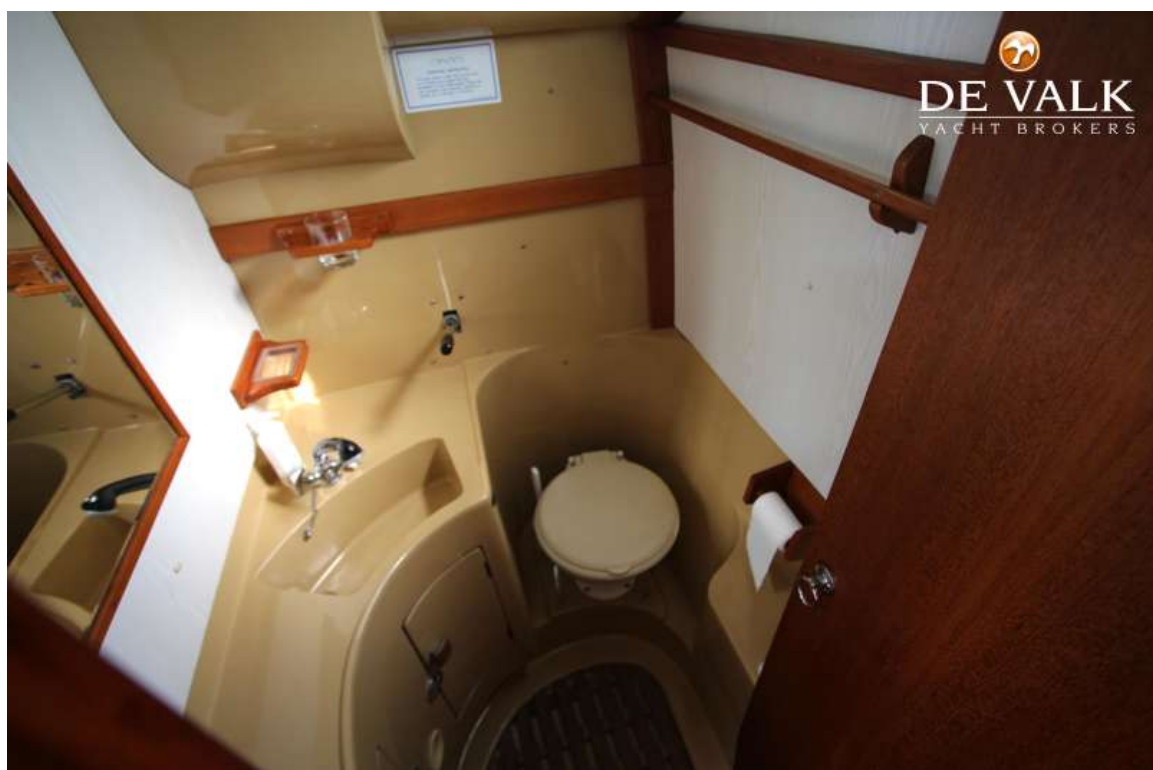
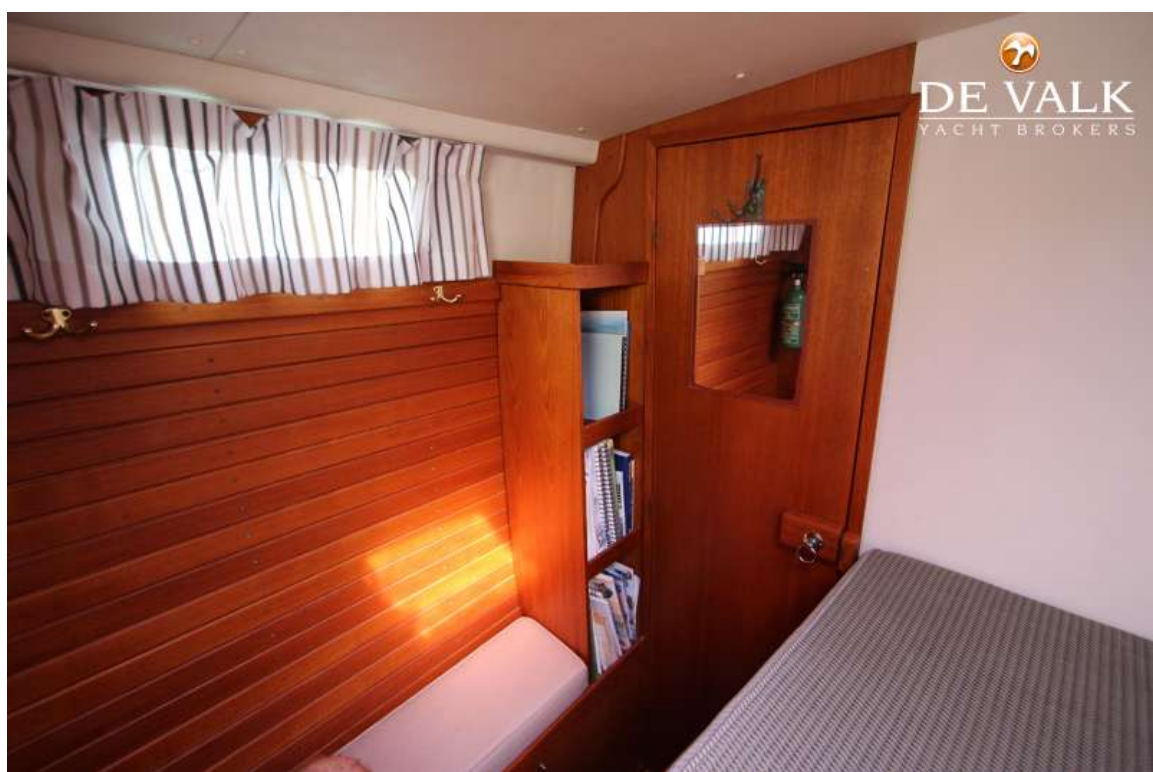
FISHER CATFISHER 28



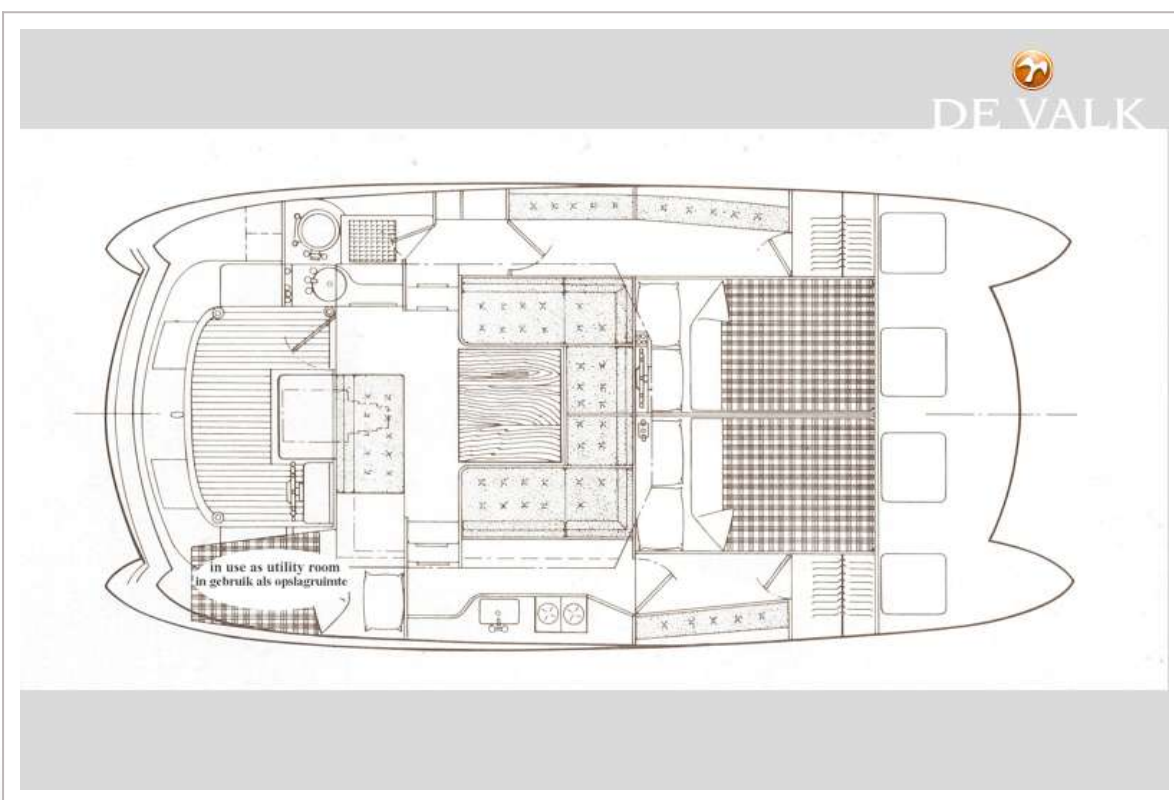
FISHER CATFISHER 28



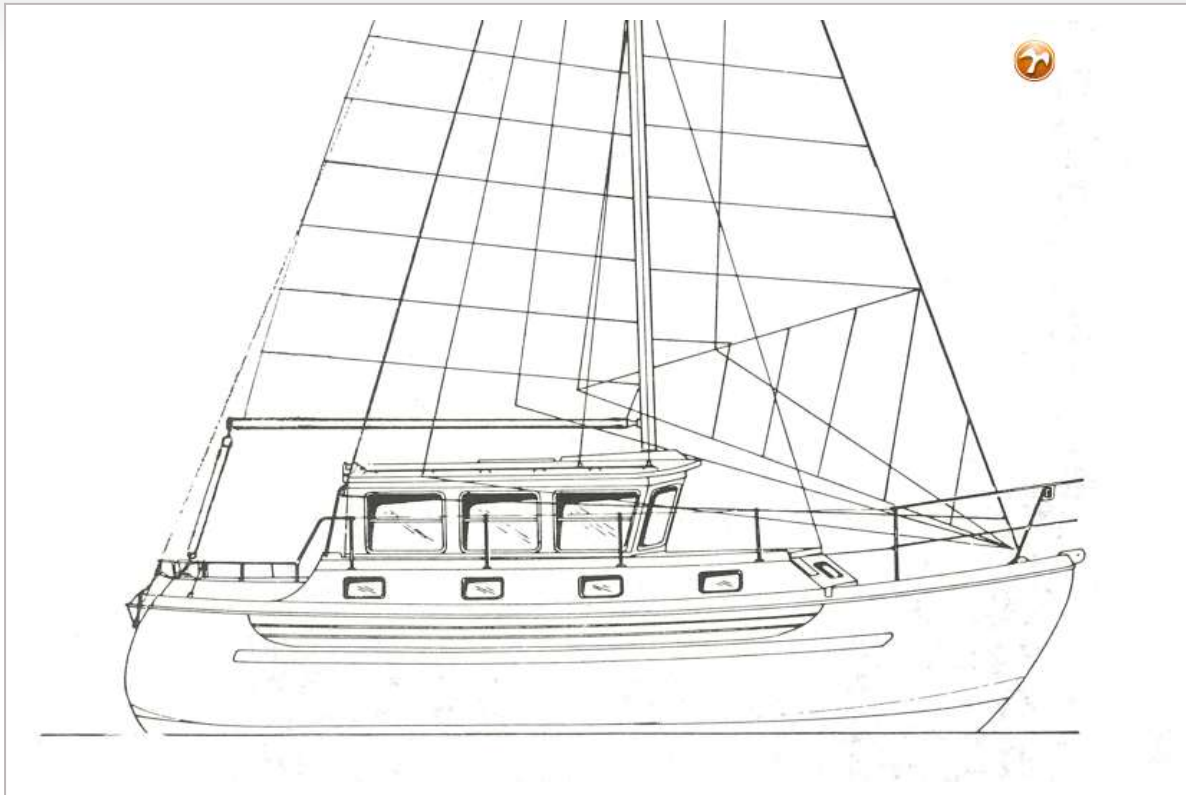
FISHER CATFISHER 28



FISHER CATFISHER 28



FISHER CATFISHER 28



FISHER CATFISHER 28



FISHER CATFISHER 28

