



DE VALK
YACHT BROKERS



VAN DE STADT 40 CARIBBEAN



DE VALK
YACHT BROKERS

VAN DE STADT 40 CARIBBEAN

BROKER'S COMMENTS

How do you make a motor-sailor that doesn't look like one and behaves like a real sailing ship ? The answer is the Van de Stadt 40 Caribbean. With her new Volvo Penta engine, new standing rigging and a lot more, built and equipped for long distance cruising, and with her shallow keel she can go where other sailboats just dream of. Now to be admired and inspected 7 days a week in Hindeloopen.

Johan Nooitgedagt

SPECIFICATIONS

Dimensions	12.30 x 4.05 x 1.60 (m)	Builder	
Built	1989	Cabins	2
Material	Steel	Berths	6
Engine(s)	1 x Volvo Penta D2-40F diesel	Hp/Kw	40.00 (hp), 29.00 (kw)
Asking price	sold (VAT)	Lying	at sales office

CONTACT

Sales office	De Valk Hindeloopen B.V.	Telephone	+31 514 52 40 00
Address	Oosterstrand 1 8713 JS Hindeloopen NL	E-mail	hindeloopen@devalk.nl

DISCLAIMER

These particulars are given in good faith as supplied but cannot be guaranteed.



VAN DE STADT 40 CARIBBEAN

GENERAL

Model	VAN DE STADT 40 CARIBBEAN
Type	sailing yacht
LOA (m)	12,30
Beam (m)	4,05
Draft (m)	1,60
Air draft (m)	18,50
Headroom (m)	2,00
Year built	1989
Launched	1990
Country	The Netherlands
Displacement (t)	13
Ballast (tonnes)	lead in steel Ca. 4
CE norm	A
Hull material	steel
Hull colour	yellow
Hull thickness (mm)	5 mm
Hull shape	round-bilged
Keel type	fin keel
Superstructure material	wood epoxy
Rubbing strake	Teak with stainless steel strip
Deck material	wood epoxy
Deck finish	non-skid paint
Superstructure deck finish	paint
Cockpit deck finish	teak
Antifouling (year)	09-2019
Dorades	2x
Window frame	aluminium
Window material	perspex
Deckhatch	2x
Insulation	foam



VAN DE STADT 40 CARIBBEAN

Radar arch	non collapsible
Fuel tank (litre)	steel 2x ca. 175 ltr.
Level indicator (fuel tank)	yes
Fuel daytank (litre)	1x ca 45 ltr.
Level indicator (daytank)	sight glass
Freshwater tank (litre)	stainless steel 2x ca. 150 ltr.
Level indicator (freshwater)	yes
Blackwater tank (litre)	polyethylene Ca. 150 ltr.
Blackwater tank extraction	deck extraction + uw line
Wheel steering	rack & pinion
Emergency tiller	yes
More info on paintwork	completely in "De IJssel" DD Lak

ACCOMMODATION

Cabins	2
Berths	6
Interior	mahogany
Floor	teak and holly
Open cockpit	yes
Doghouse	Teak with tempered glass windows
Saloon	yes
Headroom saloon (m)	1.96 - 2.00 mtr.
Heating	stove diesel Alaska by Dickinson
Navigation center	yes
Chart table	yes
Aft Cabin	yes
Galley	yes
Countertop	plastic
Sink	stainless steel
Cooker	calor gas MobiLife - 3 burner
Oven	yes



VAN DE STADT 40 CARIBBEAN

Fridge	Isotherm
Water pressure system	electrical
Manual and/or foot pump	outside water
Owners cabin	v-bed Forward cabin
Bed length (m)	Ca. 1.90 mtr
Wardrobe	shelves
Guest cabin 1	double bed Aft cabin
Bed length (m)	Ca. 1.98 mtr
Wardrobe	drawers and shelves
Bathroom	shared
Toilet	Jabsco
Toilet system	manual
Wash basin	

MACHINERY

No of engines	1
Make	Volvo Penta
Type	D2-40F
HP	40
kW	29,00
Fuel	diesel
Year installed	2017
Maximum speed (kn)	7,00
Cruising speed (kn)	6,00
Consumption (l/hr)	3,00
Range (nm)	600
Engine hours	300
Engine cooling system	freshwater heat exchanger
Drive	shaft
Engine controls	bowden cable
Gearbox	mechanical



VAN DE STADT 40 CARIBBEAN

Exhaust	watercooled
Thrust bearing	yes
Propeller type	fixed
Propeller blades	2
Propeller shaft material	stainless steel
Shaft lubrication	grease
Manual bilge pump	2015
Electrical installation	12 / 220 V
Start battery	1x 100Ah
Service battery	1x 165Ah
Battery monitor	yes
Battery charger	Victron 12V/30Ah
Inverter	Wisper Power 2500W (2016)
Solar panel	100W - 2015
Shorepower	with cable - only for battery charger

NAVIGATION

Compass	C. Plath
Depth sounder	Data from: 1x Raymarine I70 Multifunction
Log	Data from: 1x Raymarine I70 Multifunction
Windset	Data from: 1x Raymarine I70 Multifunction
VHF	Icom IC-M505 + Icom Commandmic III
Autopilot	Raymarine I70P
Radar	Raytheon RL9
GPS	Furuno GP-32
Plotter/GPS	Raymarine E7
Navtex	Furuno NX-300
Electronic chart(s)	Navionics
AIS transponder	Wesper Marine - Watchmate 850
Navigation lights	LED-lighting



EQUIPMENT

Fixed hardtop	yes
Bimini	2018
Cockpit table	yes
Bathing platform	yes
Boarding ladder	stainless steel
Bow ladder	Stainless steel + teak
Anchor	Bruce 20 kg
Anchor chain	Ca. 50 mtr - 10 mm
Windlass	electrical Quick
Outboard support	+ crane
Sea railing	wire
Grab rail (superstructure)	stainless steel
Pushpit	yes
Pulpit	yes
Lifebuoy	2014
Radar reflector	yes
Fenders	4x
Mooring lines	5x
TV	12V - Alpha Ronics
Radio-cd player	JVC
Speakers in salon	yes

RIGGING

Rigging	sloop-cutter
Standing rigging	wire
Brand mast	Francespar
Material mast	aluminium
Spreaders	Two pair
Mainsail	Ca. 2010
Mainsail cover	yes



Fully battened mainsail	yes
Jib	Cutter Jib - 2014
Genoa	2014
Genoa furler	Furlex 300S
Cutter furler	Furlex 200S
Gennaker	yes
Reefing System	slabreefing
Backstay adjuster	mechanical
Boomvang	tackle
Primary sheet winch	2x Maxwell 23
Genoa sheetwinches	2x Maxwell 28
Halyard winches	2x on mast
Reefing winch	1x on mast
Spi-pole	aluminium



VAN DE STADT 40 CARIBBEAN



VAN DE STADT 40 CARIBBEAN



VAN DE STADT 40 CARIBBEAN



VAN DE STADT 40 CARIBBEAN



VAN DE STADT 40 CARIBBEAN



VAN DE STADT 40 CARIBBEAN



VAN DE STADT 40 CARIBBEAN



VAN DE STADT 40 CARIBBEAN



VAN DE STADT 40 CARIBBEAN



VAN DE STADT 40 CARIBBEAN



VAN DE STADT 40 CARIBBEAN



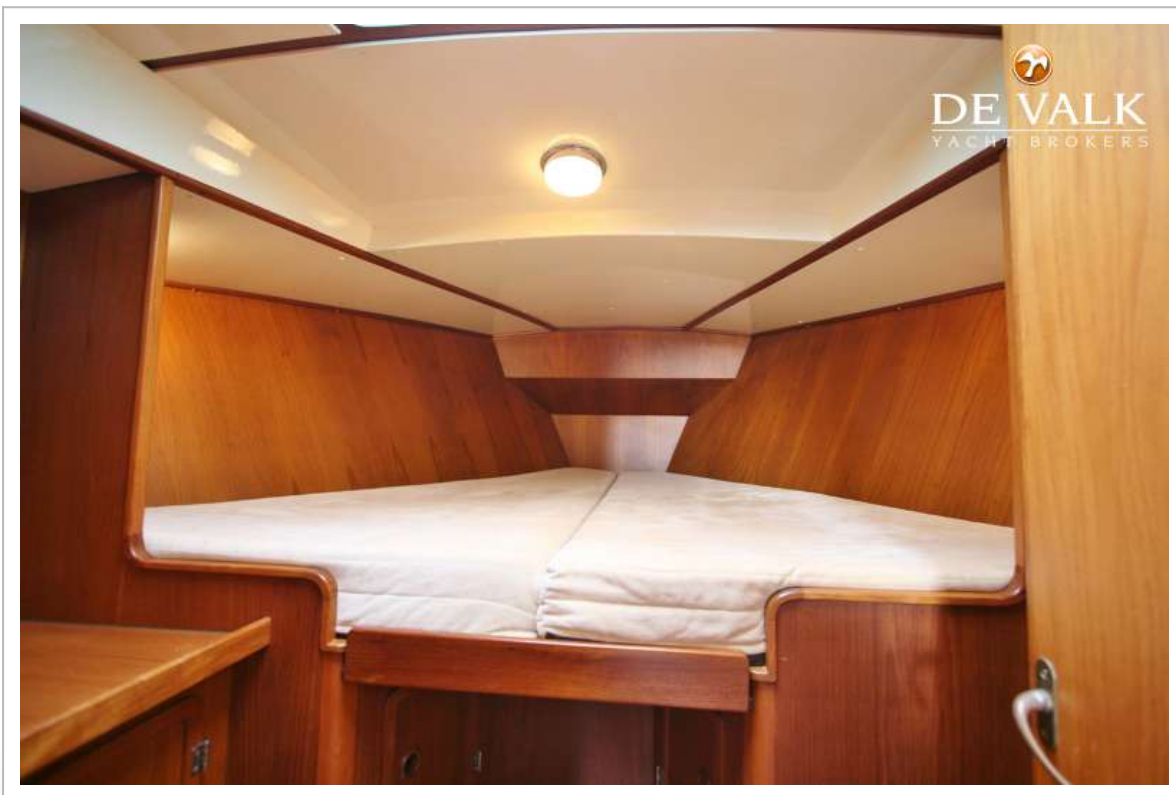
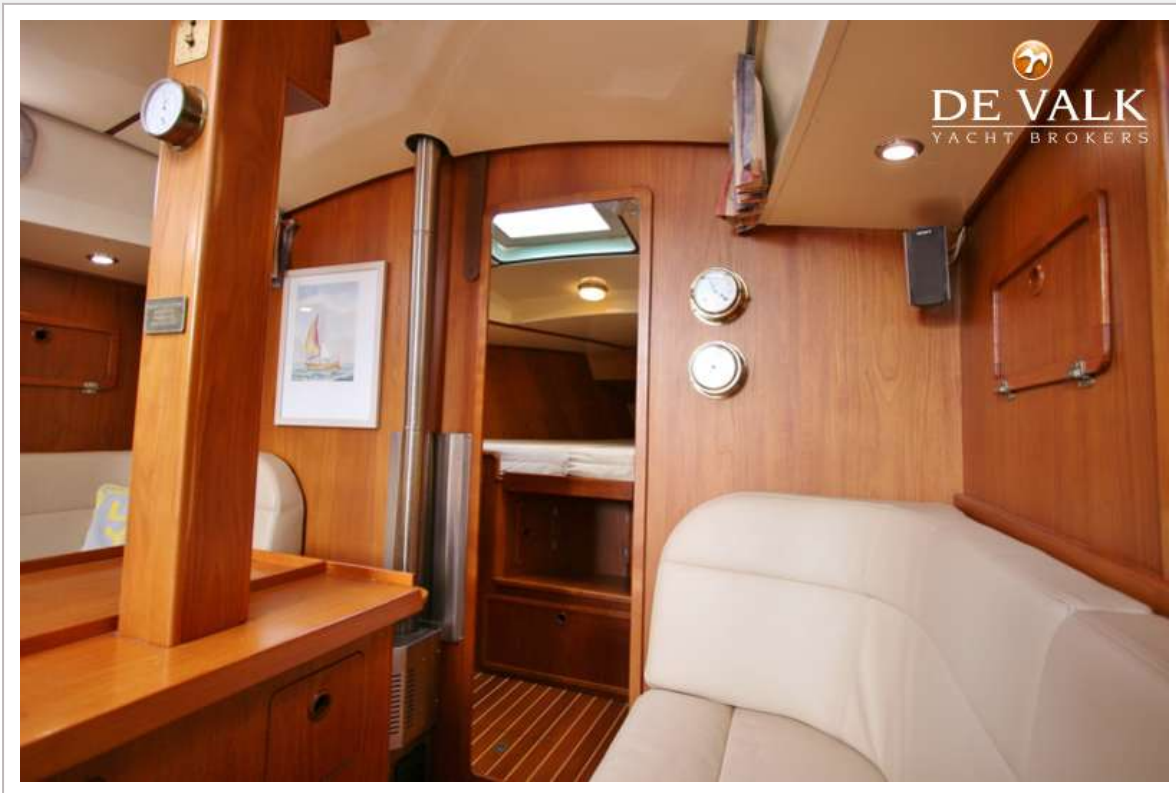
VAN DE STADT 40 CARIBBEAN



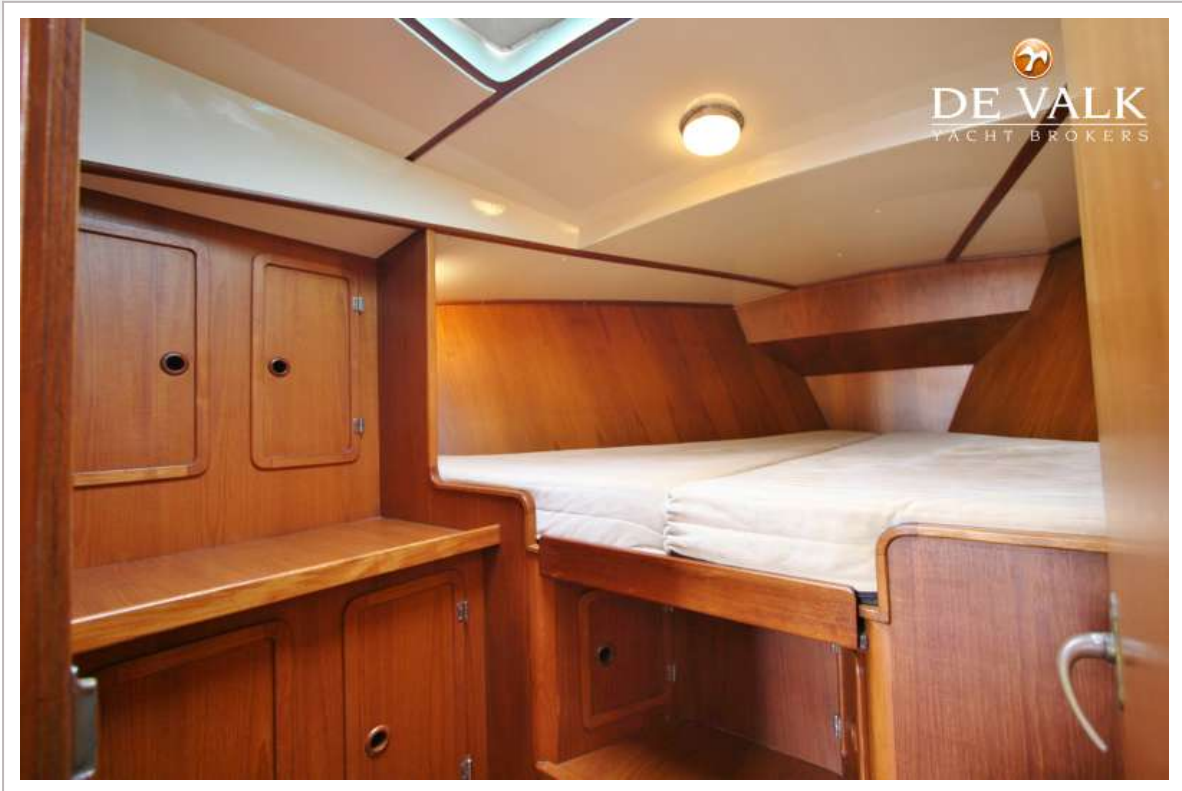
VAN DE STADT 40 CARIBBEAN



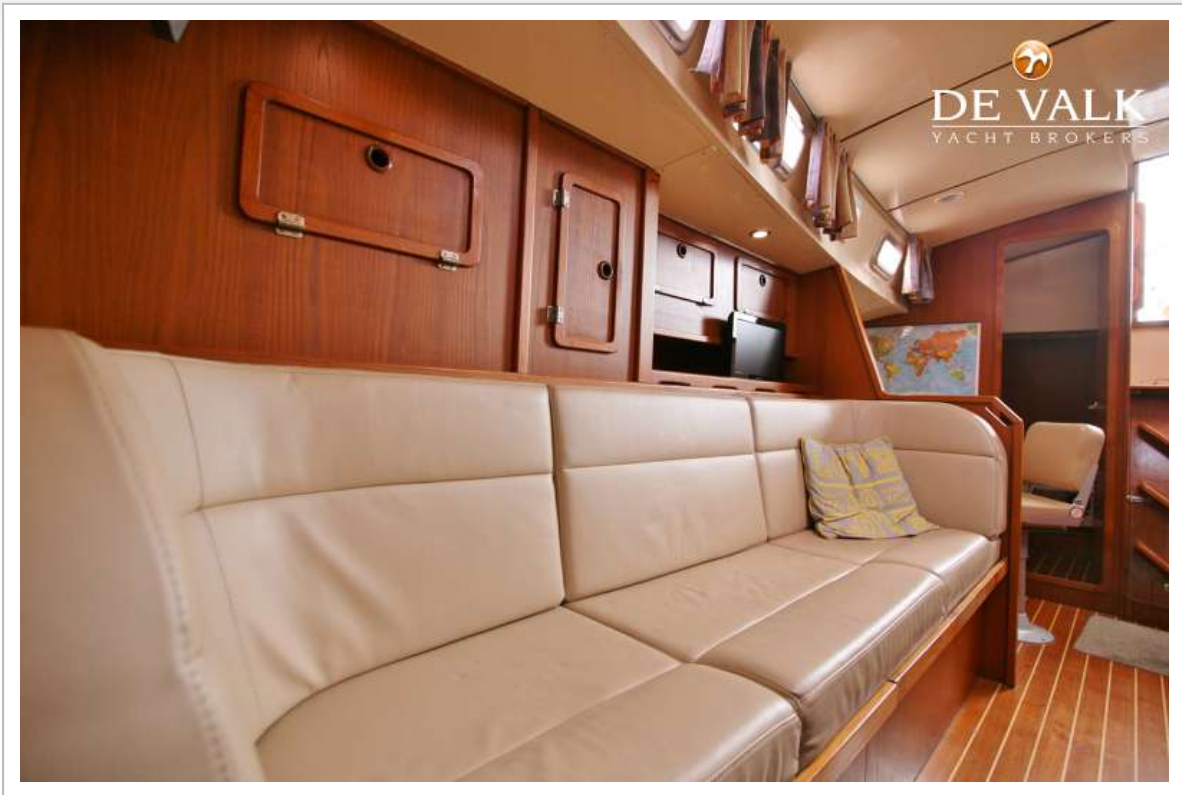
VAN DE STADT 40 CARIBBEAN



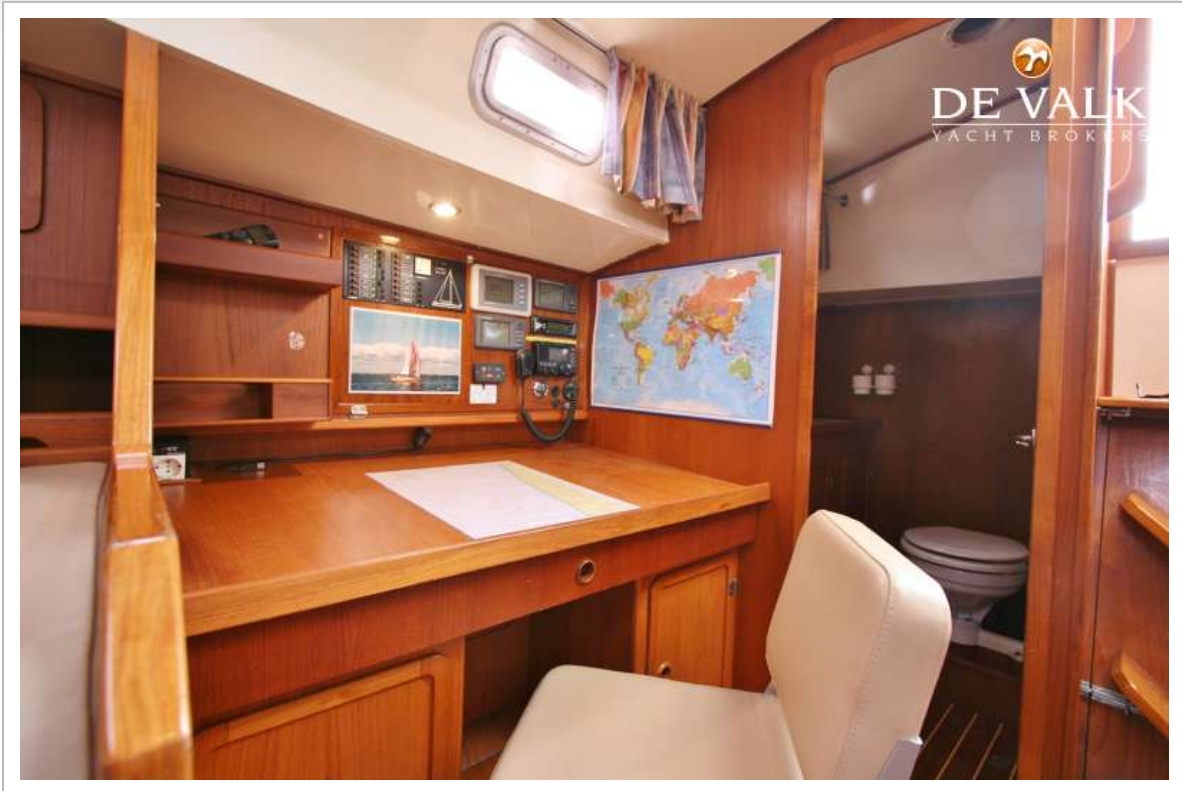
VAN DE STADT 40 CARIBBEAN



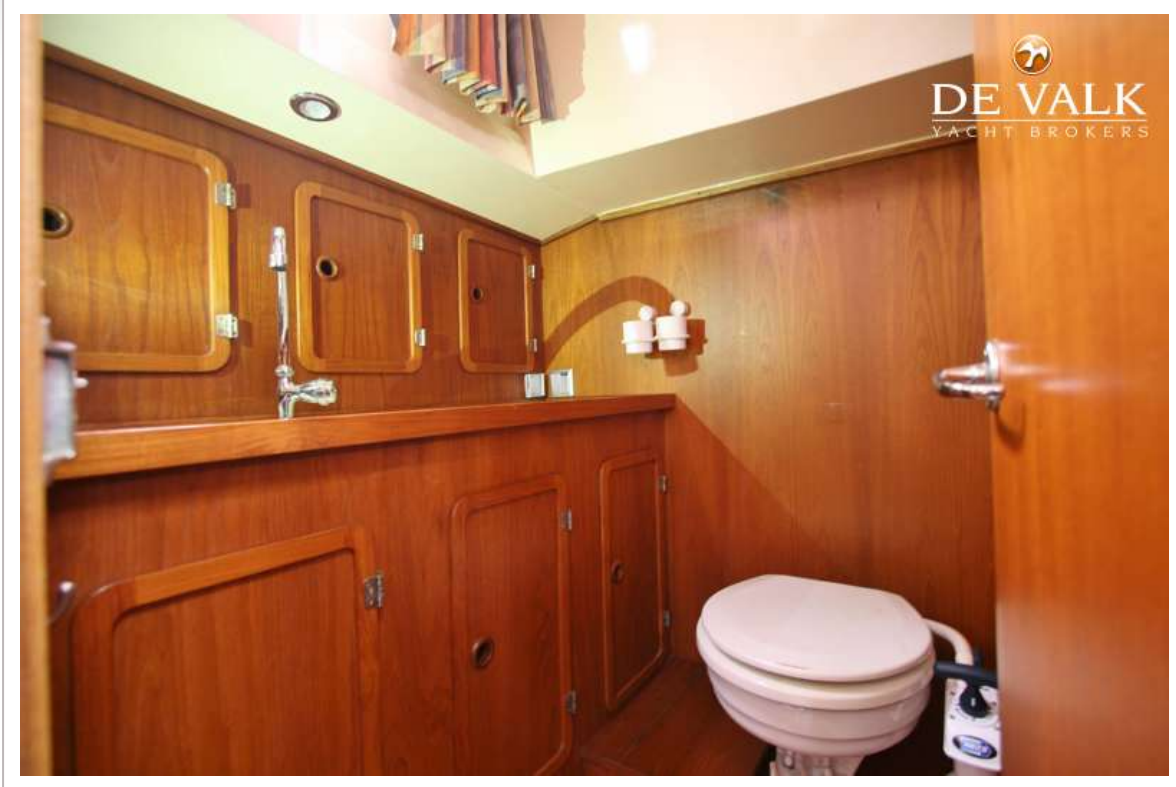
VAN DE STADT 40 CARIBBEAN



VAN DE STADT 40 CARIBBEAN



VAN DE STADT 40 CARIBBEAN



VAN DE STADT 40 CARIBBEAN

