



DE VALK
YACHT BROKERS



TRINTELLA 42



DE VALK
YACHT BROKERS

BROKER'S COMMENTS

A Trintella 42 is for the connoisseur who appreciates the sail performance, heritage and build quality that yacht builder Anne Wever is so famous for. Though a more classic yacht in appearance, you will have a tough time beating the Trintella 42 when the sails are set. Below decks one immediately is struck by the spaciousness of the interior, the amount of stowage space and privacy offered to owner and friends. This example has two cabins but can sleep up to eight. This Trintella 42 has been cared for carefully by the current owner and is now looking for a new owner.

Nick Lanting

SPECIFICATIONS

Dimensions	12.90 x 4.00 x 2.15 (m)	Builder	Jachtwerf Anne Wever BV
Built	1981	Cabins	2
Material	GRP	Berths	8
Engine(s)	1 x Volvo Penta MD22L-B diesel	Hp/Kw	40.00 (hp), 29.00 (kw)
Asking price	sold (VAT)	Lying	at sales office

CONTACT

Sales office	De Valk Sint Annaland	Telephone	+31 166 601 000
Address	Koelhuisweg 4 4697 RM Sint Annaland The Netherlands	E-mail	sintannaland@devalk.nl

DISCLAIMER

These particulars are given in good faith as supplied but cannot be guaranteed.



GENERAL

Model	TRINTELLA 42
Type	sailing yacht
LOA (m)	12,90
LWL (m)	10,60
Beam (m)	4,00
Draft (m)	2,15
Air draft (m)	18,60
Headroom (m)	1,90
Year built	1981
Builder	Jachtwerf Anne Wever BV
Country	The Netherlands
Designer	EG van de Stadt
Displacement (t)	9
Ballast (tonnes)	lead 4
CE norm	NA
Hull material	GRP
Hull colour	white
Hull shape	round-bilged
Keel type	fin keel
Superstructure material	GRP
Rubbing strake	wood
Deck material	GRP
Deck finish	teak Ca. 2000
Superstructure deck finish	non-skid moulded in
Cockpit deck finish	teak Ca. 2000
Antifouling (year)	2018
Dorades	2 x
Deckhatch	2 x
Portholes	aluminium
Fuel tank (litre)	GRP 300



Level indicator (fuel tank)	yes
Freshwater tank (litre)	GRP 460
Level indicator (freshwater)	yes
Blackwater tank (litre)	polyethylene 40 (forward toilet only)
Blackwater tank extraction	deck extraction + pump
Wheel steering	rack & pinion Lewmar pedestal (2010)
More info on hull	Anti osmosis treatment 2005
More info on paintwork	Original gelcoat

ACCOMMODATION

Cabins	2
Berths	8
Interior	teak
Floor	teak and holly
Open cockpit	yes
Saloon	yes
Headroom saloon (m)	1,90
Heating	diesel ducted hot air Webasto
Navigation center	yes
Chart table	yes
Aft Cabin	yes
Dinette	yes
Galley	yes
Countertop	tiles
Sink	stainless steel 2 x
Cooker	calor gas ENO 3-burner
Oven	ENO
Gas alarm	Safe-T-Alert SA-10 XL
Fridge	Isotherm (2008)
Hot water system	220V + engine 220V needs to be checked
Water pressure system	electrical



Owners cabin	double bed Aft
Bed length (m)	1,90 x 1,40/0,80
Wardrobe	hanging and shelves
Bathroom	separate
Toilet	shared Jabsco
Toilet system	manual
Wash basin	in the bathroom
Shower	shared
Extra info	Headroom 1,82m
Guest cabin 1	bunk bed Forward
Bed length (m)	1,97 x 0,70 (2x), 1,97 x 0,60 (2x)
Wardrobe	shelves
Bathroom	en suite
Toilet	en suite
Toilet system	manual
Wash basin	in the bathroom
Shower	en suite Pullup
Extra info	Storage compartment forward

MACHINERY

No of engines	1
Make	Volvo Penta
Type	MD22L-B
HP	40
kW	29,00
Fuel	diesel
Year installed	1999
Maximum speed (kn)	8,00
Cruising speed (kn)	7,00
Consumption (l/hr)	3,00
Engine hours	2000



Engine cooling system	freshwater heat exchanger
Drive	sail-drive
Saildrive seal	2016
Engine controls	bowden cable
Exhaust	watercooled
Propeller type	fixed
Propeller blades	3
Manual bilge pump	yes
Electric bilge pump	yes
Bilge alarm	Safe-T-Alert SA-10 XL
Electrical installation	12V & 220V
Batteries	3 x (2014)
Start battery	1 x 100 Ah
Service battery	2 x 220 Ah
Battery monitor	2x voltmeter, 2x amperemeter
Battery charger	Victron (2017)
Shorepower	with cable
Extra info	Engine hours are estimated

NAVIGATION

Compass	Sestrel
Electric compass	Sestrel at nav station
Depth sounder	Simrad IS15
Log	Simrad IS15
Windset	Simrad IS15 Tack + Wind
VHF	Simrad RS82 + extra handset
Autopilot	Simrad Robertson AP20
Rudder angle indicator	VDO
Radar	Raytheon (needs to be checked)
GPS	Simrad IS15
Plotter	Simrad CP33 at navstation



Navtex	Target Navtex Pro-Plus
Electronic chart(s)	yes
AIS receiver	On optional PC
Radio receiver	NASA Communication Receiver HF-4E
Navigation lights	yes
Extra info	All Simrad electronics from 2007

EQUIPMENT

Sprayhood with grab rail	yes
Sun awning	yes
Cockpit cushions	2 x
Cockpit table	yes
Boarding ladder	stainless steel
Deck shower	Cold water
Anchor	
Anchor chain	yes
Anchor 2	CQR Plough
Windlass	electrical Neco Marine
Capstan	On windlass
Sea railing	wire
Grab rail (superstructure)	wood
Pushpit	yes
Pulpit	yes
Life raft	valise (or bag) 2014
Life raft (pers)	valise (or bag) 6
Last life raft survey	06/2018
Lifebuoy	2 x
Danbuoy	1 x
Safety lines on deck	yes
Radar reflector	yes
Fenders	yes



Mooring lines	yes
Radio-cd player	Sony radio/cassetteplayer + 10CD changer
Speakers in salon	2 x
Speakers in cabin	1 x front, 1x aft
Clock - barometer	yes
Fire extinguisher	yes
Latest extinguisher survey	2010

RIGGING

Rigging	sloop
Standing rigging	Rod +/- 2000
Brand mast	Isomat
Material mast	aluminium
Spreaders	1 x 2
Mainsail	2005
Mainsail cover	yes
Fully battened mainsail	yes
Genoa	2006
Genoa furler	Schaefer System 2100
Spinnaker	Age unknown, spinnaker skin from 2010
Reefing System	slabreefing
Backstay adjuster	mechanical
Boomvang	
Genoa sheetwinches	2x Lewmar 55
Halyard winches	1x Lewmar 40 2-Speed + 1x Lewmar 40, both on mast
Spinnaker winch	1x Lewmar 40 on mast
Reefing winch	1x Lewmar 30 on mast
Multifunctional winches	2x Lewmar 42 in cockpit
Spi-pole	aluminium
Jockey-pole	aluminium
Isolated backstay	yes





TRINTELLA 42



TRINTELLA 42



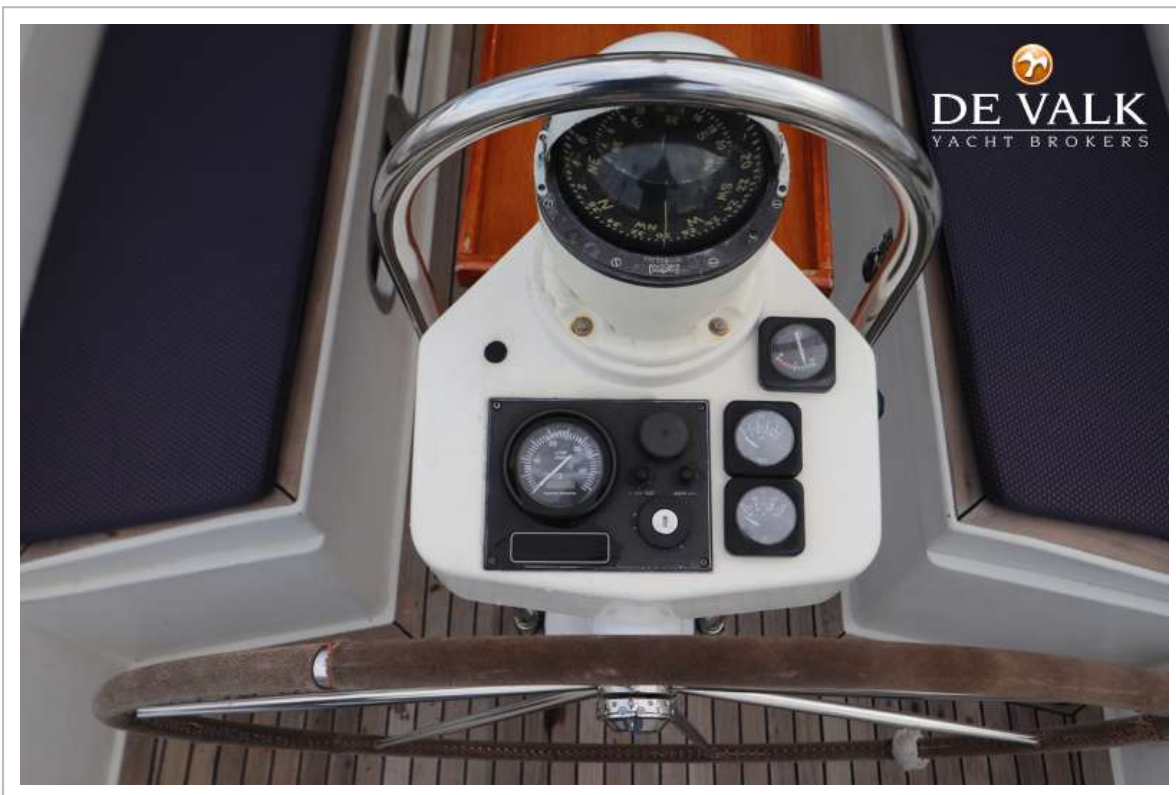
TRINTELLA 42



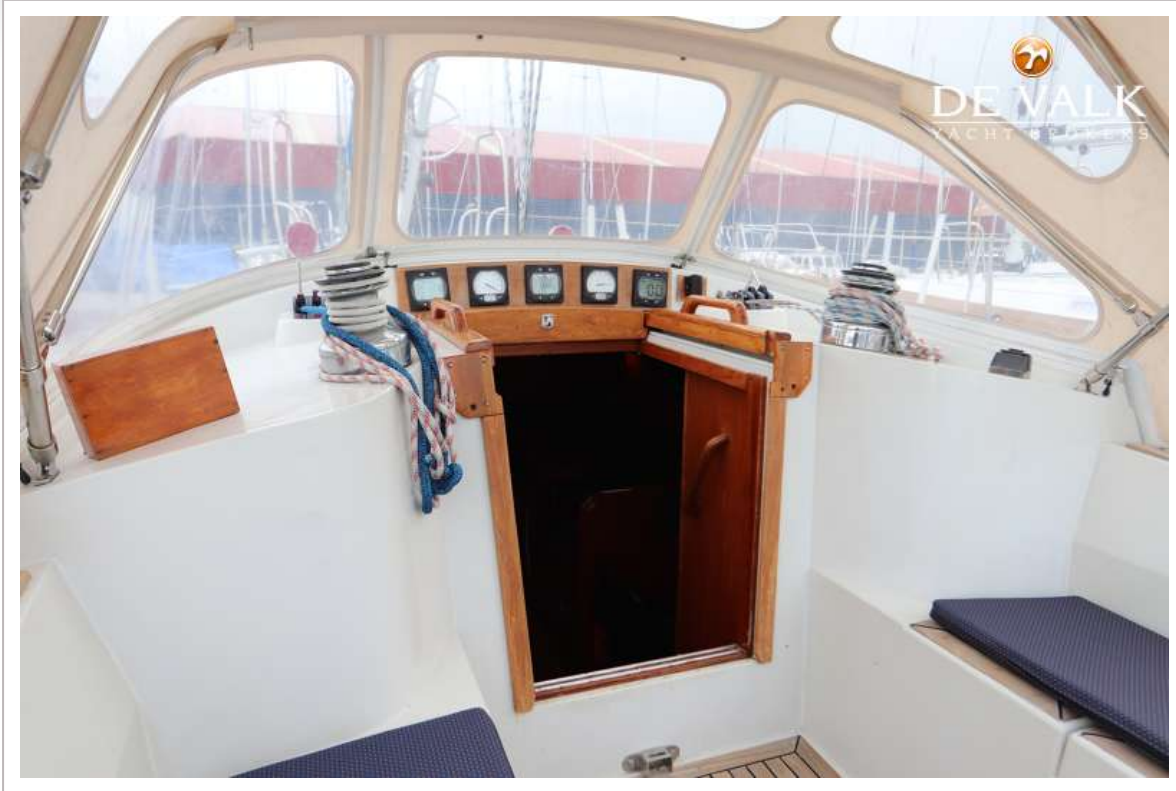
TRINTELLA 42



TRINTELLA 42



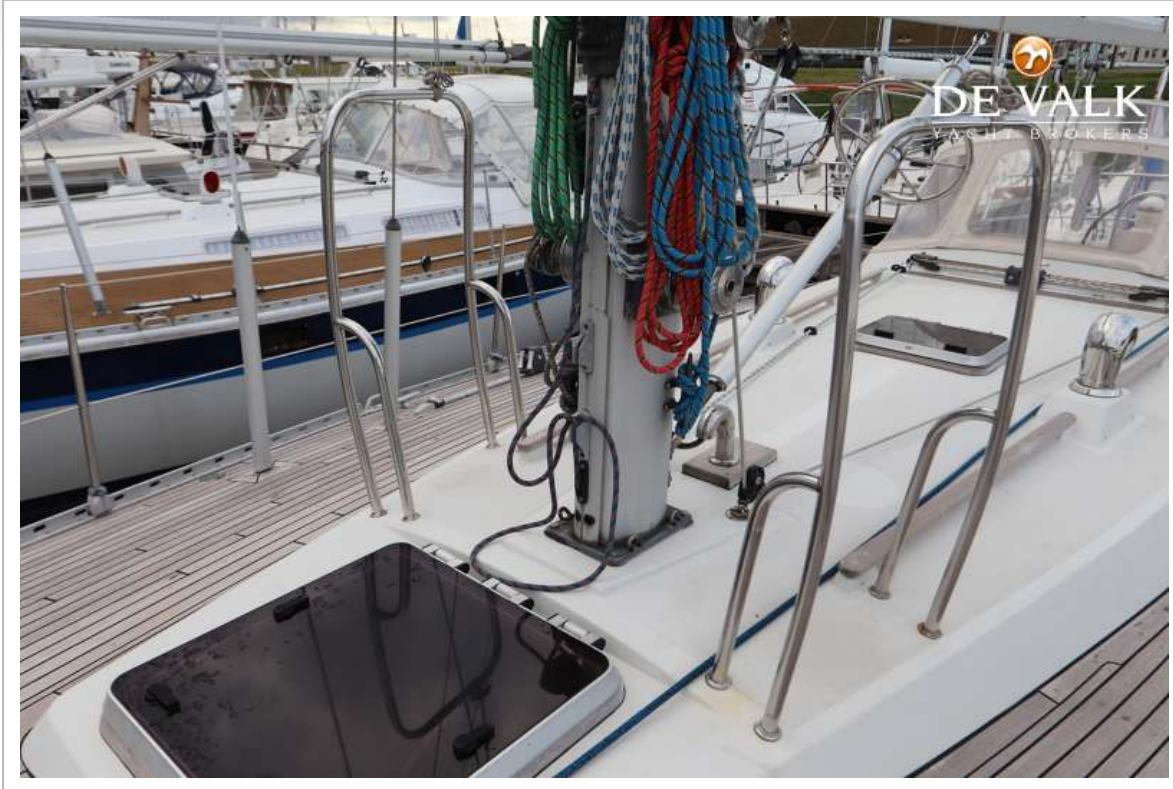
TRINTELLA 42



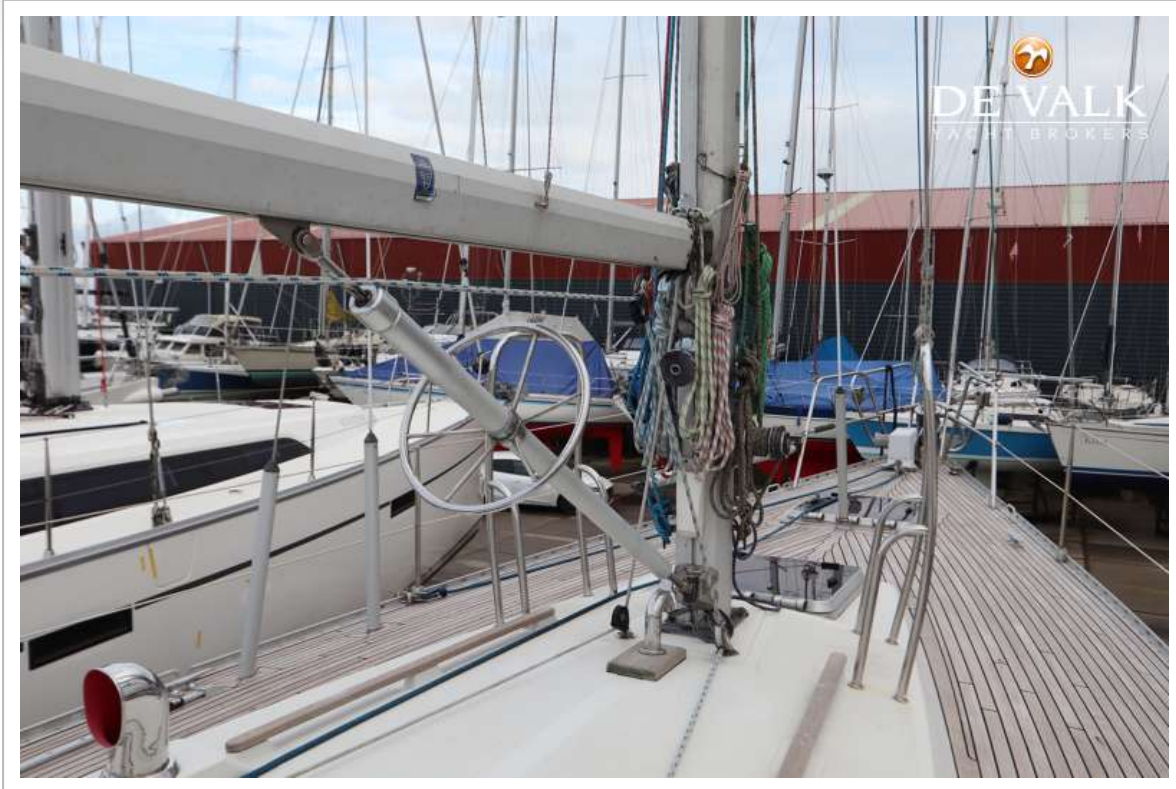
TRINTELLA 42



TRINTELLA 42



TRINTELLA 42



TRINTELLA 42



TRINTELLA 42



TRINTELLA 42



TRINTELLA 42



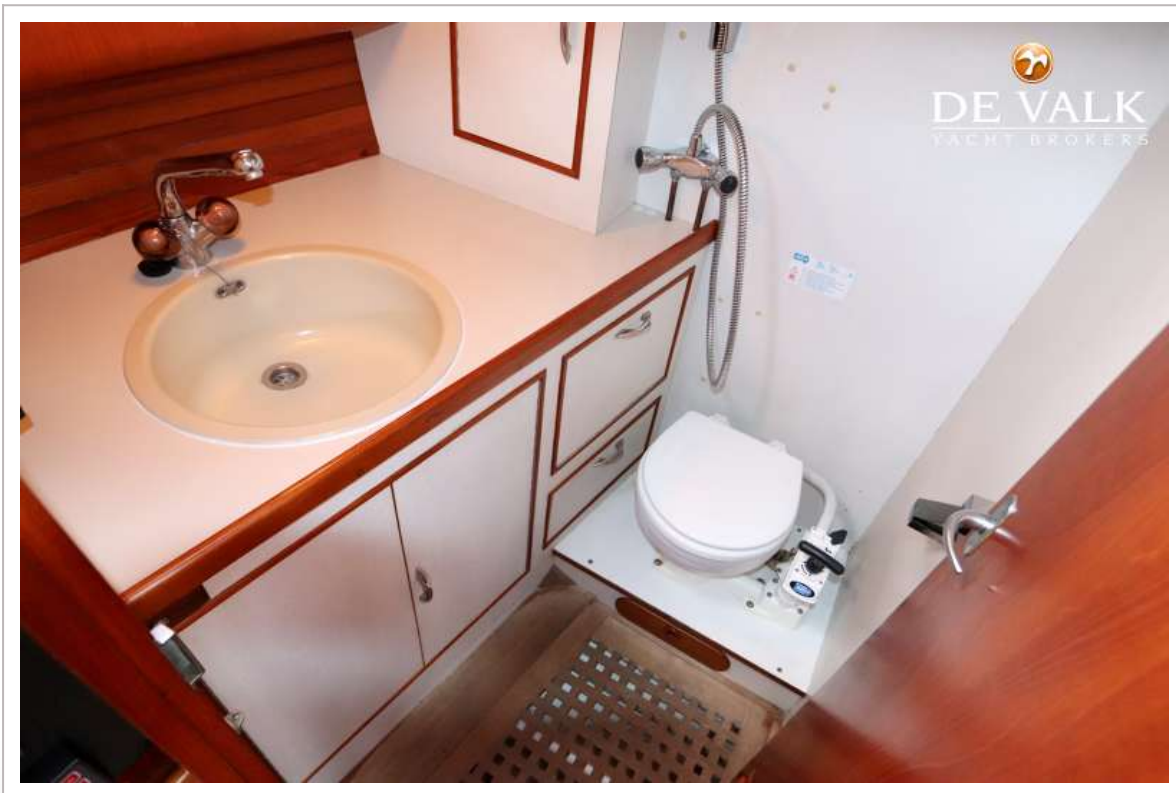
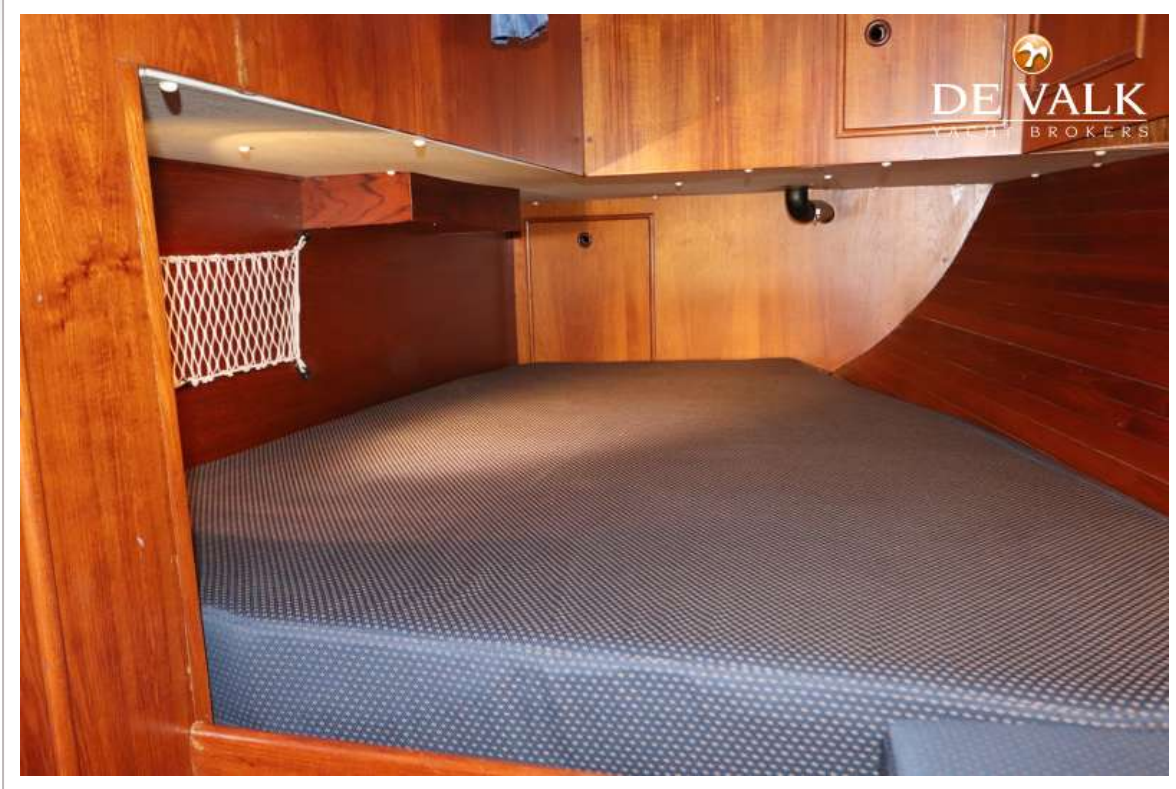
TRINTELLA 42



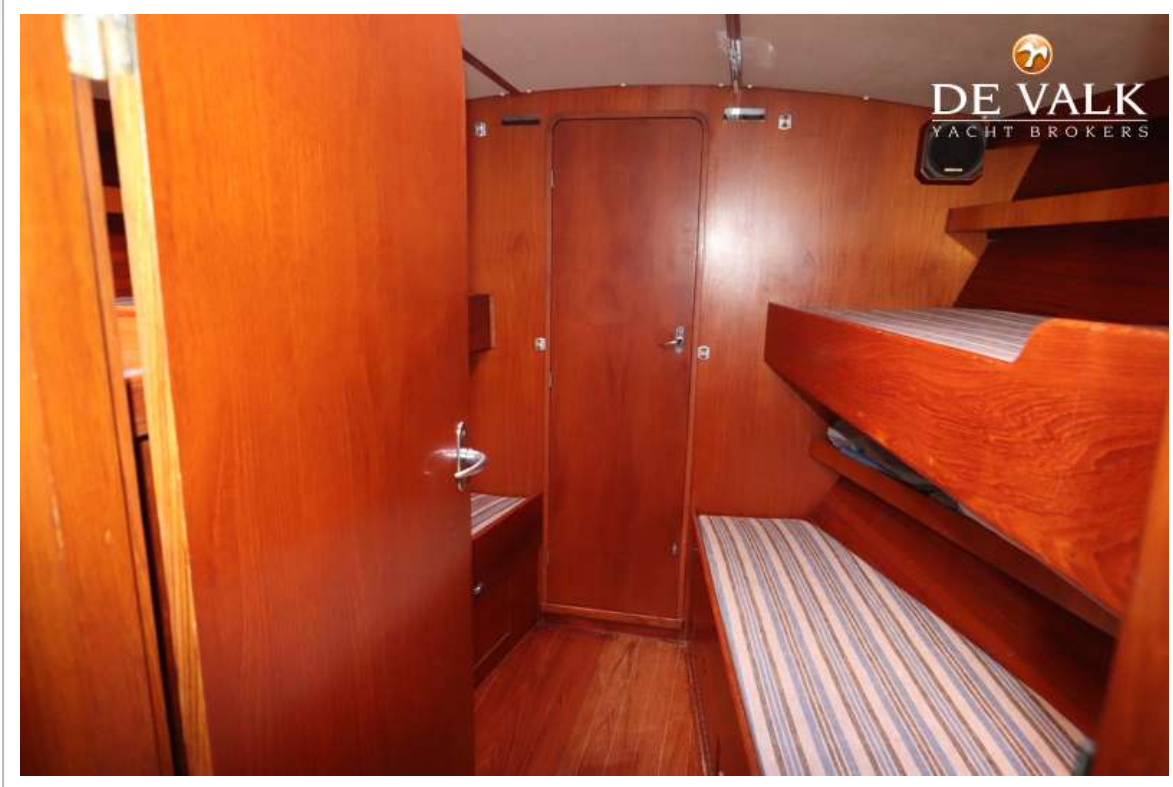
TRINTELLA 42



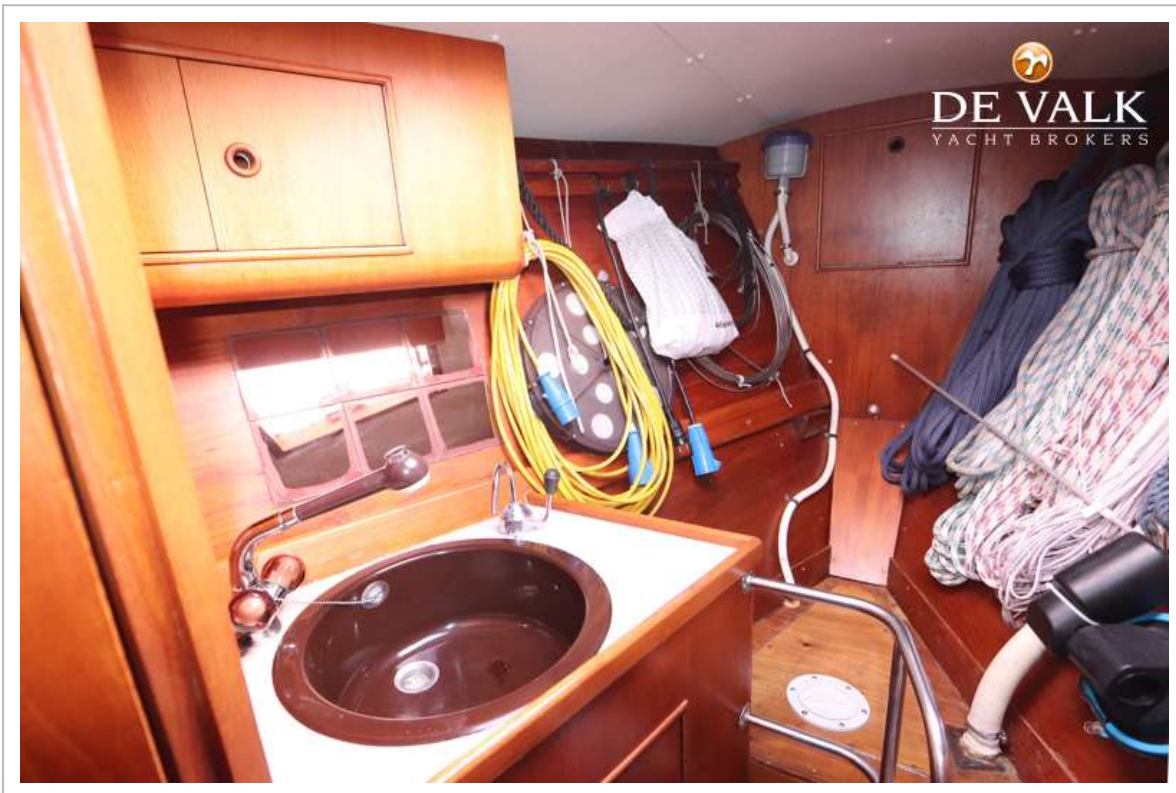
TRINTELLA 42



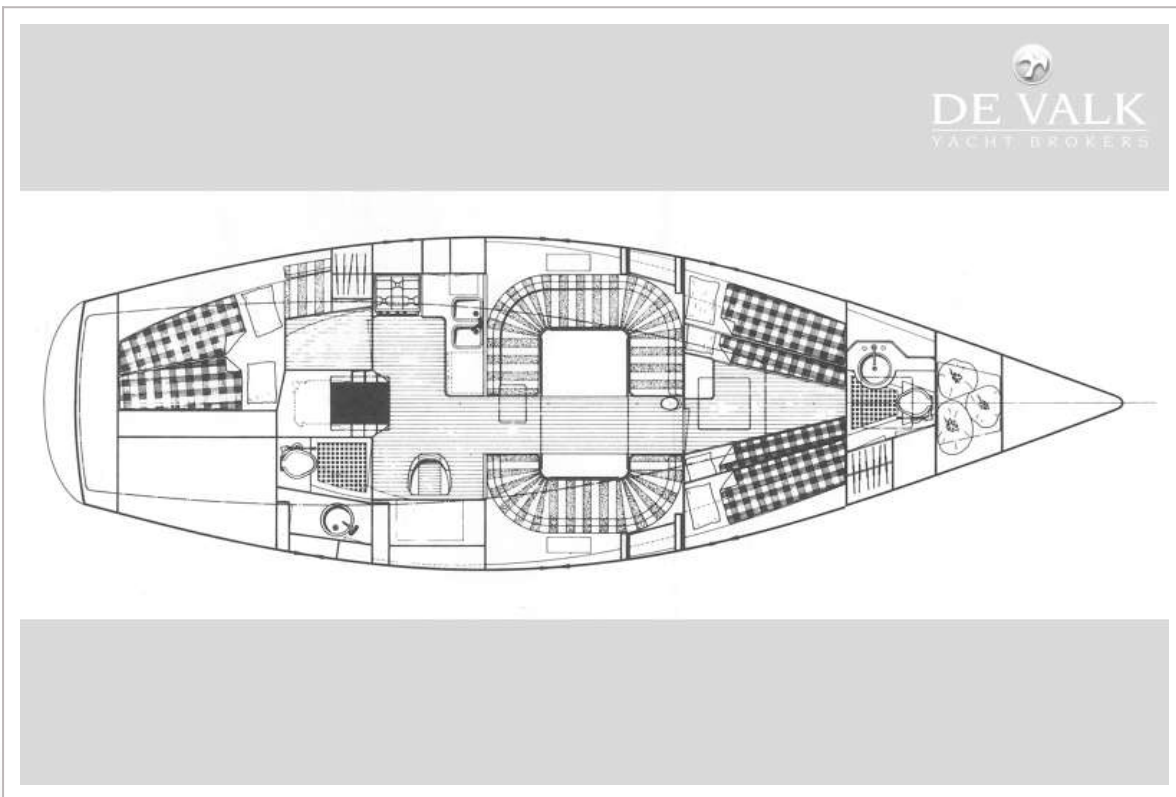
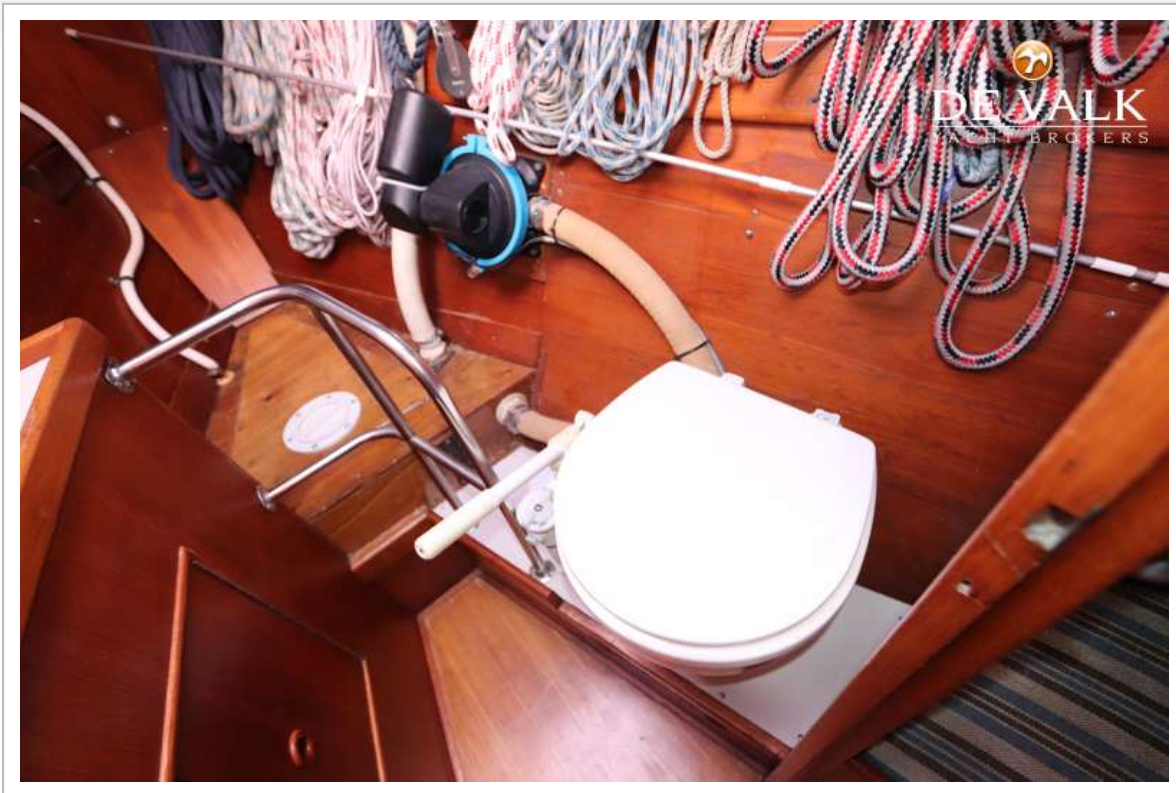
TRINTELLA 42



TRINTELLA 42



TRINTELLA 42



TRINTELLA 42

