



DE VALK
YACHT BROKERS



BREEDENDAM MTB 31 SILVERLINE



DE VALK
YACHT BROKERS

BREEDENDAM MTB 31 SILVERLINE

BROKER'S COMMENTS

Based upon the famous British motor torpedo boats, these "greyhounds from the sea" were the inspiration for Breedendam to have these great weekend/day tenders designed by John Janssen. Breedendam yachts are trendsetters and to no surprise often copied. The MTB31's performance will leave you smiling all day long and when you appreciate finer things in life, detailed craftsmanship, style and performance, this excellent Breedendam is the weekend/day cruiser for you.

Marc Weijenberg

SPECIFICATIONS

Dimensions	9.40 x 2.90 x 0.90 (m)	Builder	Jachtwerf Breedendam
Built	2006	Cabins	1
Material	GRP	Berths	4
Engine(s)	1 x Volvo Penta D4-260 diesel	Hp/Kw	260.00 (hp), 191.00 (kw)
Asking price	sold (VAT)	Lying	elsewhere / Not at sales office

CONTACT

Sales office	De Valk Sint Annaland B.V.	Telephone	+31 (0)166 601 000
Address	Koelhuisweg 4 4697 RM Sint Annaland NL	E-mail	sintannaland@devalk.nl

DISCLAIMER

These particulars are given in good faith as supplied but cannot be guaranteed.



GENERAL

Model	BREEDENDAM MTB 31 SILVERLINE
Type	motor yacht
LOA (m)	9,40
Beam (m)	2,90
Draft (m)	0,90
Air draft (m)	1,90
Headroom (m)	1,60
Year built	2006
Builder	Jachtwerf Breedendam
Country	The Netherlands
Designer	John Janssen Design/Van Burkom
Displacement (t)	5
CE norm	C
Hull material	GRP
Hull colour	blue
Hull shape	hard chine
Superstructure material	mahogany
Rubbing strake	stainless steel
Deck material	composite
Deck finish	teak
Superstructure deck finish	teak
Cockpit deck finish	teak
Antifouling (year)	2019/2020
Window frame	copper chromed
Window material	tempered glass
Deckhatch	yes
Portholes	
Fuel tank (litre)	polyethylene 500
Freshwater tank (litre)	polyethylene 200
Blackwater tank (litre)	polyethylene 40



Blackwater tank extraction	deck extraction + uw line
Wheel steering	hydraulic
Extra info	Covers for hatches, blinds etc.

ACCOMMODATION

Cabins	1
Berths	4
Interior	mahogany
Floor	teak and holly
Saloon	With convertible sofa's
Heating	diesel ducted hot air Webasto Airtop 2000
Convertible berth	Double bed in cockpit
Galley	In the cockpit
Sink	stainless steel
Cooker	3 burner
Oven	yes
Fridge	Coolmatic (12v)
Hot water system	220V + engine
Water pressure system	electrical
Owners cabin	twin single
Wardrobe	hanging and shelves
Bathroom	
Toilet	shared
Toilet system	electric
Wash basin	in the bathroom
Extra info	Classic hand crafted joinery and detailed interior using the fin

MACHINERY

No of engines	1
Make	Volvo Penta
Type	D4-260



BREEDENDAM MTB 31 SILVERLINE

HP	260
kW	191,00
Fuel	diesel
Year installed	2005
Maximum speed (kn)	24,00
Cruising speed (kn)	6,00
Consumption (l/hr)	4,00
Engine hours	290
Engine cooling system	freshwater heat exchanger
Drive	Z-drive
Engine controls	electrical
Gearbox	mechanical Volvo Penta Duoprop
Bowthruster	electric QL
Exhaust	watercooled
Propeller type	Volvo Penta Duoprop
Propeller blades	3+4 blades
Manual bilge pump	yes
Electric bilge pump	yes
Electrical installation	12/220v
Start battery	1 x
Service battery	2 x
Bowthruster battery	1 x
Battery monitor	yes
Battery charger	Phillippi 12v
Inverter	Sterling 12v/1800watt
Shorepower	with cable
Trimtabs	QL (interceptor blades)
Extra info	Extra engine room insulation twin diesel filter system
Extra info	Optimum performance and handling with Volvo Penta's Duoprop dri

NAVIGATION



Electric compass	Via autopilot
Depth sounder	Simrad in plotter
Autopilot	Simrad AP16
Rudder angle indicator	yes
GPS	Simrad
Plotter	Simrad CX33
Electronic chart(s)	1 x
Navigation lights	yes

EQUIPMENT

Fixed windscreen	yes
Sprayhood	yes
Cockpit cover	Three part cover
Winter cover	Special light weight material
Cockpit table	Solid mahogany with inlay pattern
Bathing platform	yes
Boarding ladder	stainless steel
Deck shower	Hot + cold
Anchor	
Anchor chain	Leadline
Lifejackets	10 x
Wiper	2 x
Fenders	yes
Mooring lines	yes
Radio-cd player	JVC
Cockpit speakers	yes
Speakers in salon	yes







BREEDENDAM MTB 31 SILVERLINE



BREEDENDAM MTB 31 SILVERLINE



BREEDENDAM MTB 31 SILVERLINE



BREEDENDAM MTB 31 SILVERLINE



BREEDENDAM MTB 31 SILVERLINE



BREEDENDAM MTB 31 SILVERLINE



BREEDENDAM MTB 31 SILVERLINE



BREEDENDAM MTB 31 SILVERLINE



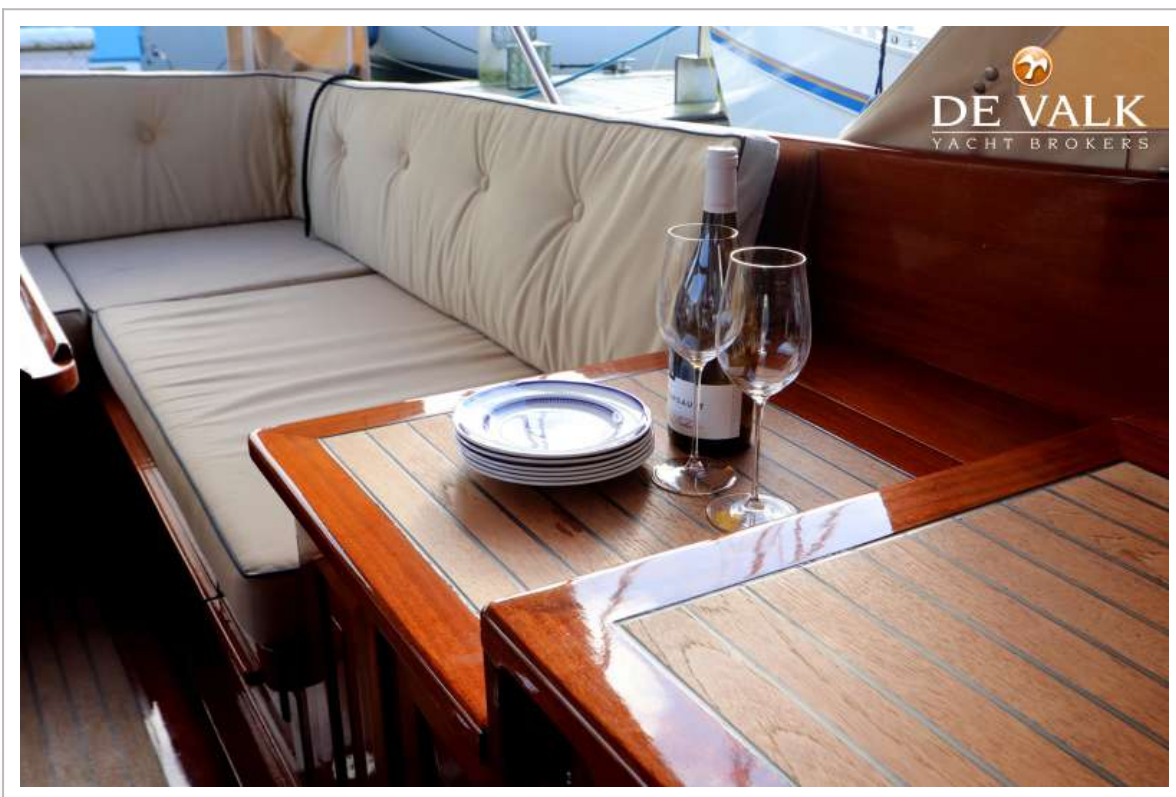
BREEDENDAM MTB 31 SILVERLINE



BREEDENDAM MTB 31 SILVERLINE



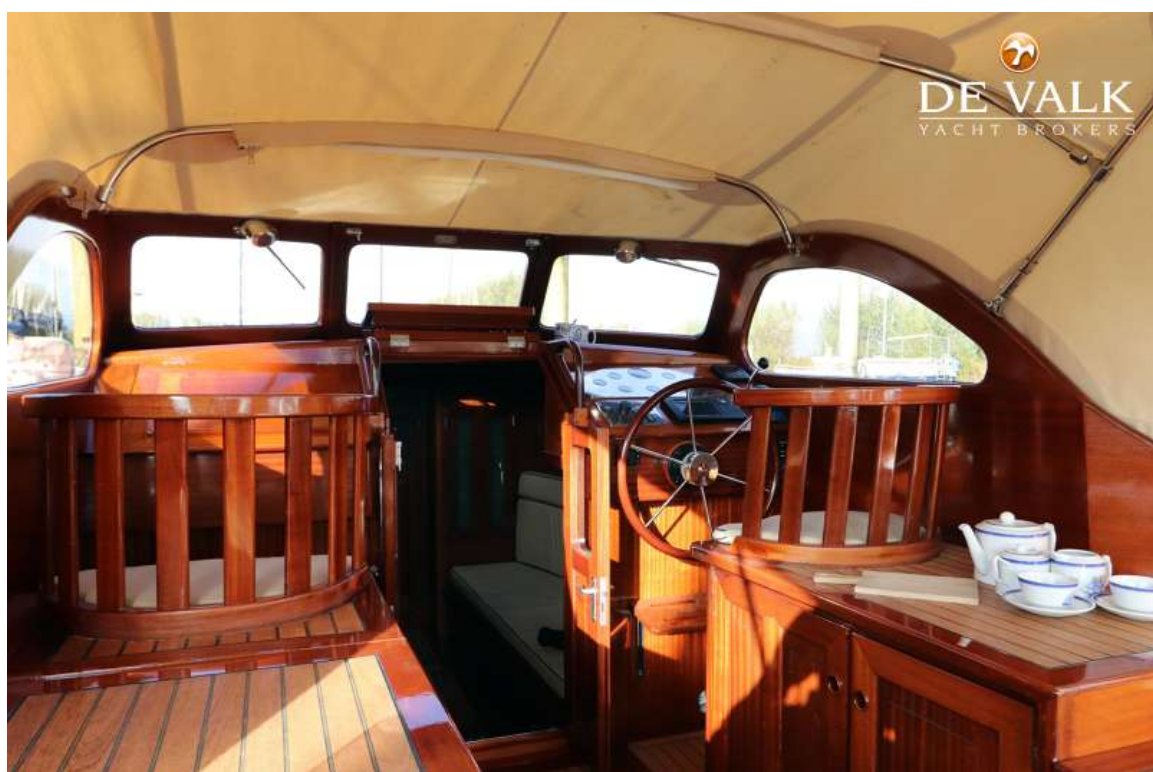
BREEDENDAM MTB 31 SILVERLINE



BREEDENDAM MTB 31 SILVERLINE

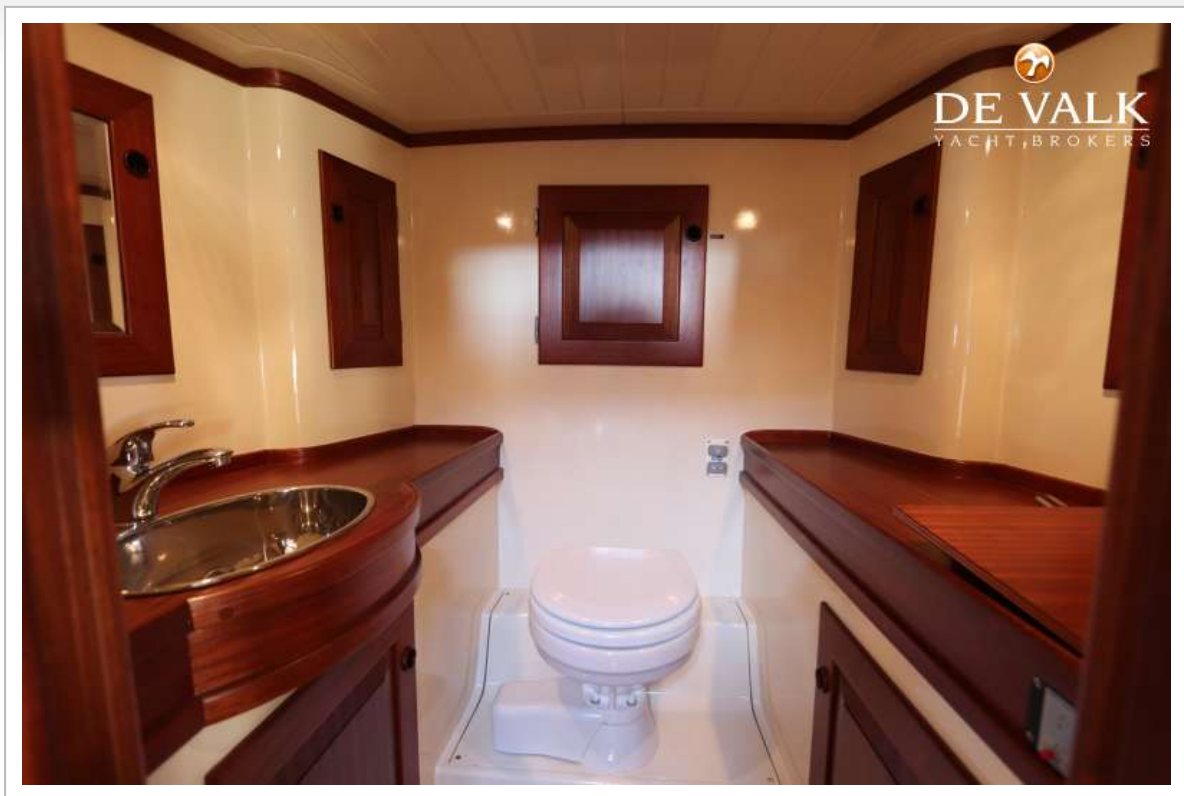


BREEDENDAM MTB 31 SILVERLINE



BREEDENDAM MTB 31 SILVERLINE





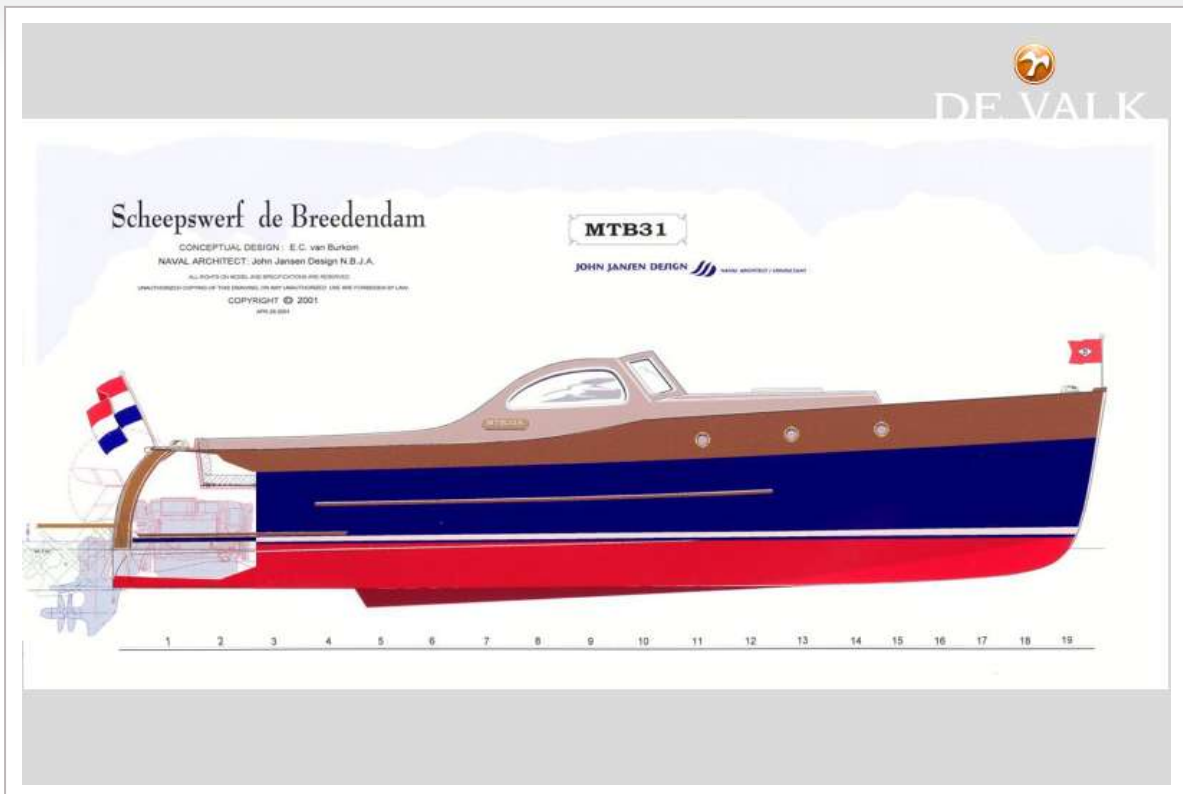
BREEDENDAM MTB 31 SILVERLINE



BREEDENDAM MTB 31 SILVERLINE



BREEDENDAM MTB 31 SILVERLINE



BREEDENDAM MTB 31 SILVERLINE



