



DE VALK  
YACHT BROKERS



## HALLBERG RASSY 352



DE VALK  
YACHT BROKERS

# HALLBERG RASSY 352

## BROKER'S COMMENTS

This Hallberg Rassy 352 offers a lot of comfort and is an ideal ship for a longer stay. She was back in her days a huge success, because (despite her length) she was combined with a lowered passage to the aft cabin and still maintained her beautiful lines. Hallberg Rassy 352 is known for its excellent sailing properties in nice weather, but also in hard weather and strong winds in rough seas. Don't let this boat pass unnoticed and make a visiting appointment to view the Hallberg Rassy 352.

*Nick Lanting*

## SPECIFICATIONS

<b>Dimensions</b>	10.54 x 3.38 x 1.67 (m)	<b>Builder</b>	Hallberg Rassy VARVS AB
<b>Built</b>	1988	<b>Cabins</b>	2
<b>Material</b>	GRP	<b>Berths</b>	6
<b>Engine(s)</b>	1 x Volvo Penta 2003T diesel	<b>Hp/Kw</b>	43.00 (hp), 31.00 (kw)
<b>Asking price</b>	sold (VAT )	<b>Lying</b>	contact sales office

## CONTACT

<b>Sales office</b>	De Valk Sint Annaland B.V.	<b>Telephone</b>	+31 (0)166 601 000
<b>Address</b>	Koelhuisweg 4 4697 RM Sint Annaland NL	<b>E-mail</b>	sintannaland@devalk.nl

## DISCLAIMER

These particulars are given in good faith as supplied but cannot be guaranteed.



## GENERAL

Model	HALLBERG RASSY 352
Type	sailing yacht
LOA (m)	10,54
Beam (m)	3,38
Draft (m)	1,67
Air draft (m)	15,65
Headroom (m)	1,86
Year built	1988
Builder	Hallberg Rassy VARVS AB
Country	Sweden
Designer	Christoph Rassy / Olle Enderlein
Displacement (t)	6,7
CE norm	NA
Hull material	GRP
Hull colour	white
Hull shape	round-bilged
Keel type	long keel
Superstructure material	GRP
Superstructure (mm)	5
Rubbing strake	aluminum
Deck material	GRP
Deck finish	teak
Superstructure deck finish	non-skid paint
Cockpit deck finish	teak
Dorades	3
Window frame	aluminium
Window material	tempered glass
Deckhatch	yes
Portholes	aluminium
Mast can be lowered	manual



Fuel tank (litre)	aluminium 140
Fuel tank 2 (litre)	aluminium 140
Level indicator (fuel tank)	yes
Freshwater tank (litre)	aluminium 310
Level indicator (freshwater)	yes
Wheel steering	cable steering
Emergency tiller	yes

## ACCOMMODATION

Cabins	2
Berths	6
Interior	mahogany
Floor	teak and holly
Saloon	yes
Headroom saloon (m)	1,85
Chart table	yes
Aft Cabin	yes
Dinette	yes
Galley	yes
Countertop	wood
Sink	stainless steel Double
Cooker	calor gas 2 burner
Oven	ENO
Fridge	yes
Hot water system	220V + engine
Water pressure system	electrical
Manual and/or foot pump	yes
Owners cabin	double bed
Bed length (m)	2,45 x 2,00
Wardrobe	hanging and shelves
Bathroom	



Toilet	shared
Toilet system	electric
Wash basin	in the bathroom
Shower	shared
Guest cabin 1	v-bed
Bed length (m)	2x 1,95 x 0,66
Wardrobe	hanging and shelves

## MACHINERY

No of engines	1
Make	Volvo Penta
Type	2003T
HP	43
kW	31,00
Fuel	diesel
Year installed	1988
Engine hours	1350
Engine cooling system	freshwater heat exchanger
Drive	shaft
Engine controls	bowden cable
Gearbox	mechanical
Bowthruster	electric Vetus 3KW foot control
Exhaust	watercooled
Propeller type	reversible Gori
Propeller blades	3
Propeller shaft material	steel
Manual bilge pump	yes
Electric bilge pump	yes
Electrical installation	12v/220v
Start battery	1x 60Ah
Service battery	2x 170Ah



Battery charger

Mastervolt 25Ah

Shorepower

## NAVIGATION

Compass

Venus

Electric compass

Raymarine ST6001 Smart Pilot

Depth sounder

Raymarine ST70

Log

Raymarine ST70

Windset

Raymarine ST70

Repeater

4

VHF

2x Ray240E

Autopilot

Raymarine ST6001 Smart Pilot

Rudder angle indicator

Raymarine ST6001 Smart Pilot

Plotter

2x Raymarine E120

AIS receiver

AIS 600 Garmin

## EQUIPMENT

Fixed windscreen

yes

Sprayhood

(2019)

Cockpit cover

(2019)

Bimini

(2019)

Winter cover

Whole boat

Cockpit table

yes

Boarding ladder

stainless steel

Bow ladder

yes

Anchor

Anchor chain

50m (2019)

Windlass

electrical Loftrans

Capstan

Loftrans

Sea railing

wire

Safety harness

yes



Lifebuoy	yes
Danbuoy	yes
Wiper	yes
Radar reflector	yes
Fenders	yes
Mooring lines	yes
Radio-cd player	yes
Cockpit speakers	yes
Speakers in salon	yes
Clock - barometer	yes
Fire extinguisher	(2018)

## RIGGING

Rigging	sloop
Standing rigging	wire (2019)
Brand mast	Seldén
Material mast	aluminium
Spreaders	4
Keel stepped mast	yes
Fully battened mainsail	Hood
Genoa I	Hood
Genoa II	Hood 150%
Genoa furler	Furler Reckmann
Spinnaker	yes
Stormjib	yes
Reefing System	main in-mast furling
Backstay adjuster	mechanical
Boomvang	mechanical
Primary sheet winch	Lewmar 30ST
Secondary sheet winch	2x Lewmar 16
Genoa sheetwinches	2x Lewmar 46ST



Spi-pole

aluminium





# HALLBERG RASSY 352



# HALLBERG RASSY 352





# HALLBERG RASSY 352





# HALLBERG RASSY 352



# HALLBERG RASSY 352





# HALLBERG RASSY 352

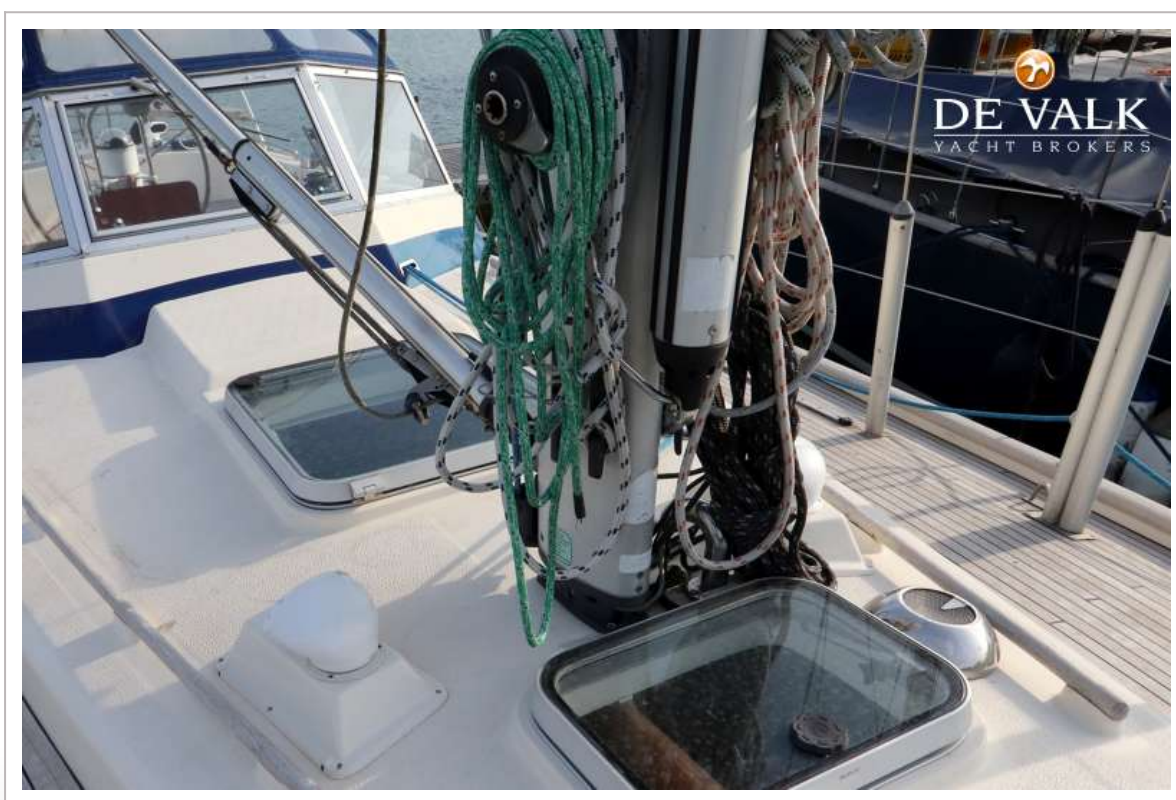
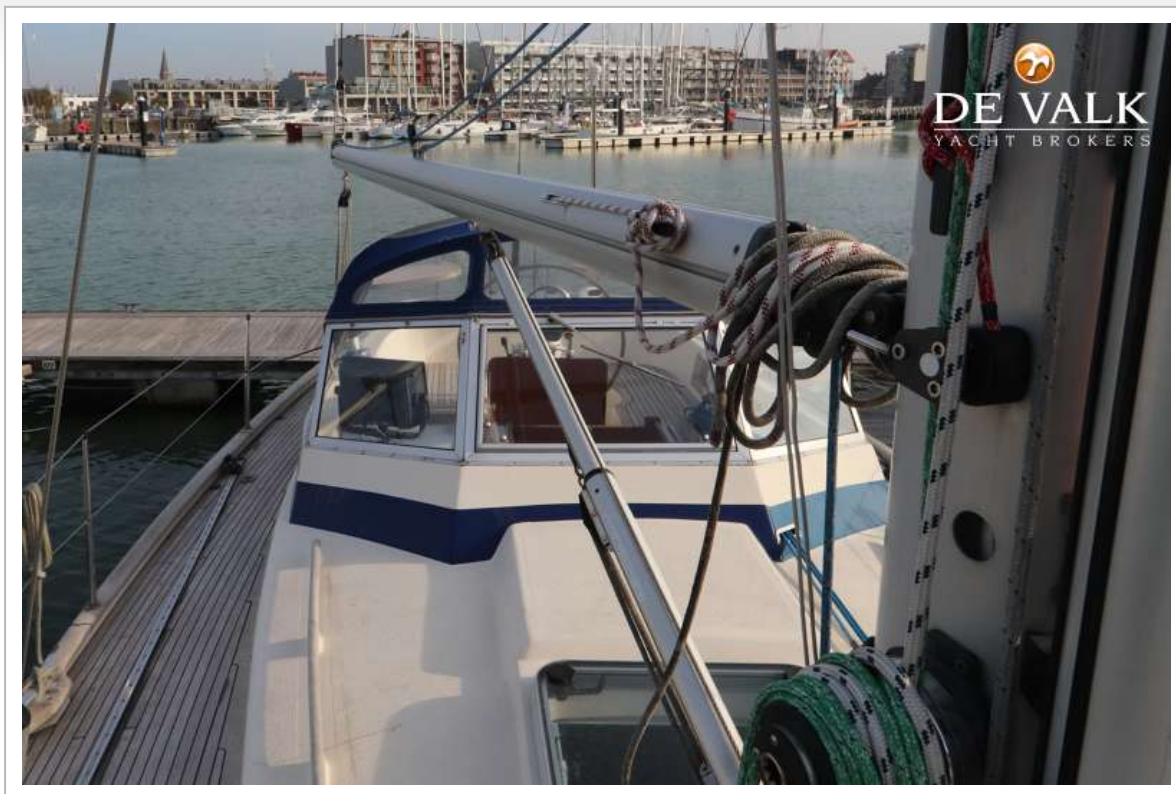


# HALLBERG RASSY 352





# HALLBERG RASSY 352

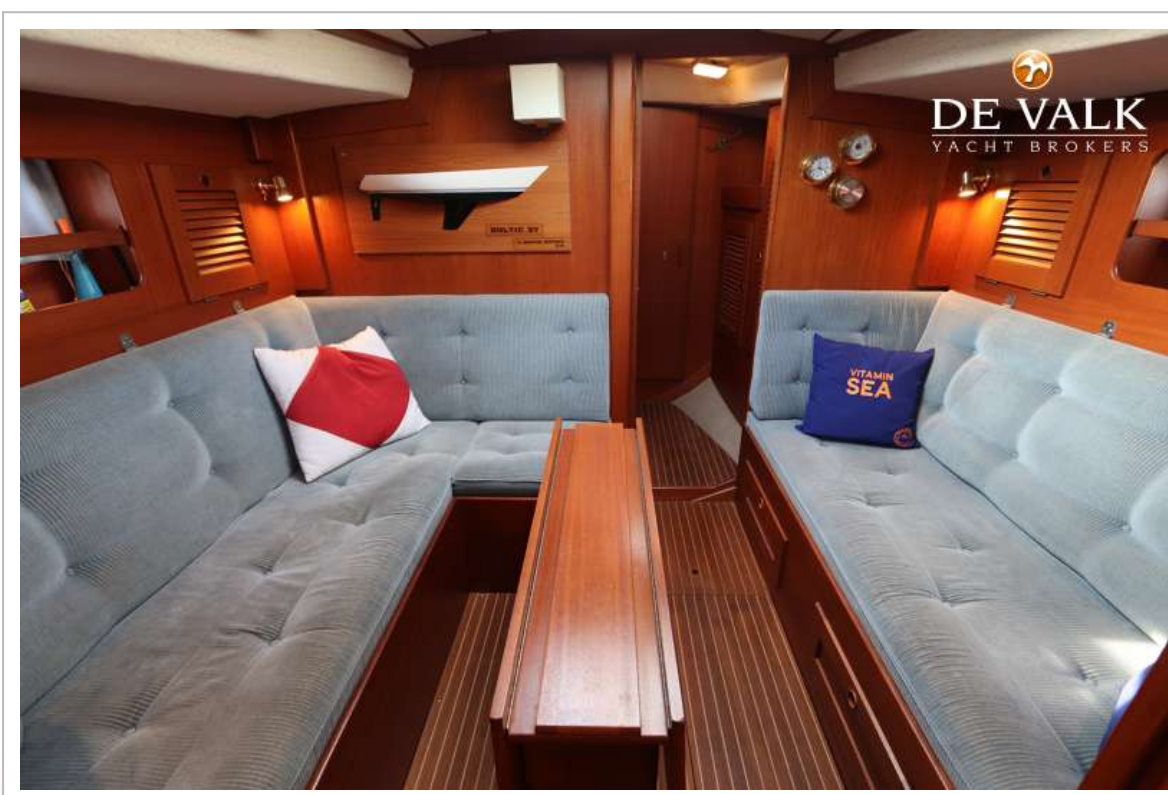




# HALLBERG RASSY 352



# HALLBERG RASSY 352





# HALLBERG RASSY 352



# HALLBERG RASSY 352





# HALLBERG RASSY 352



# HALLBERG RASSY 352

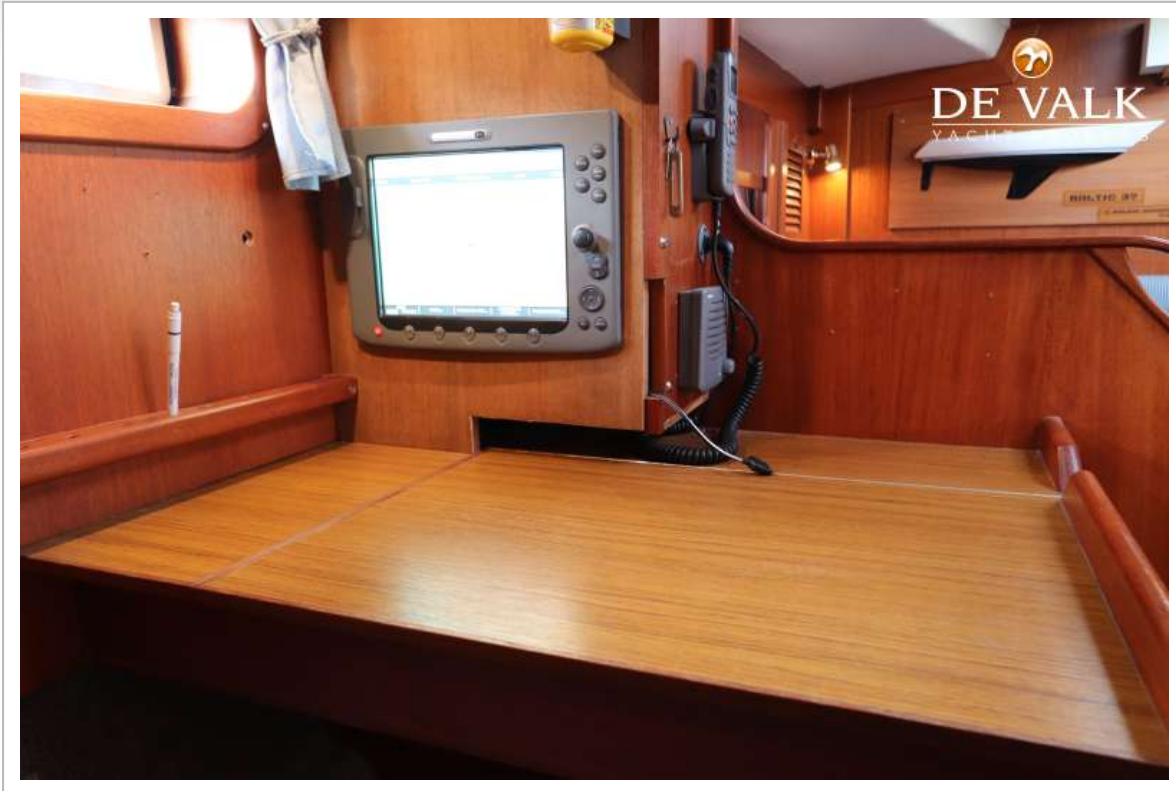




# HALLBERG RASSY 352

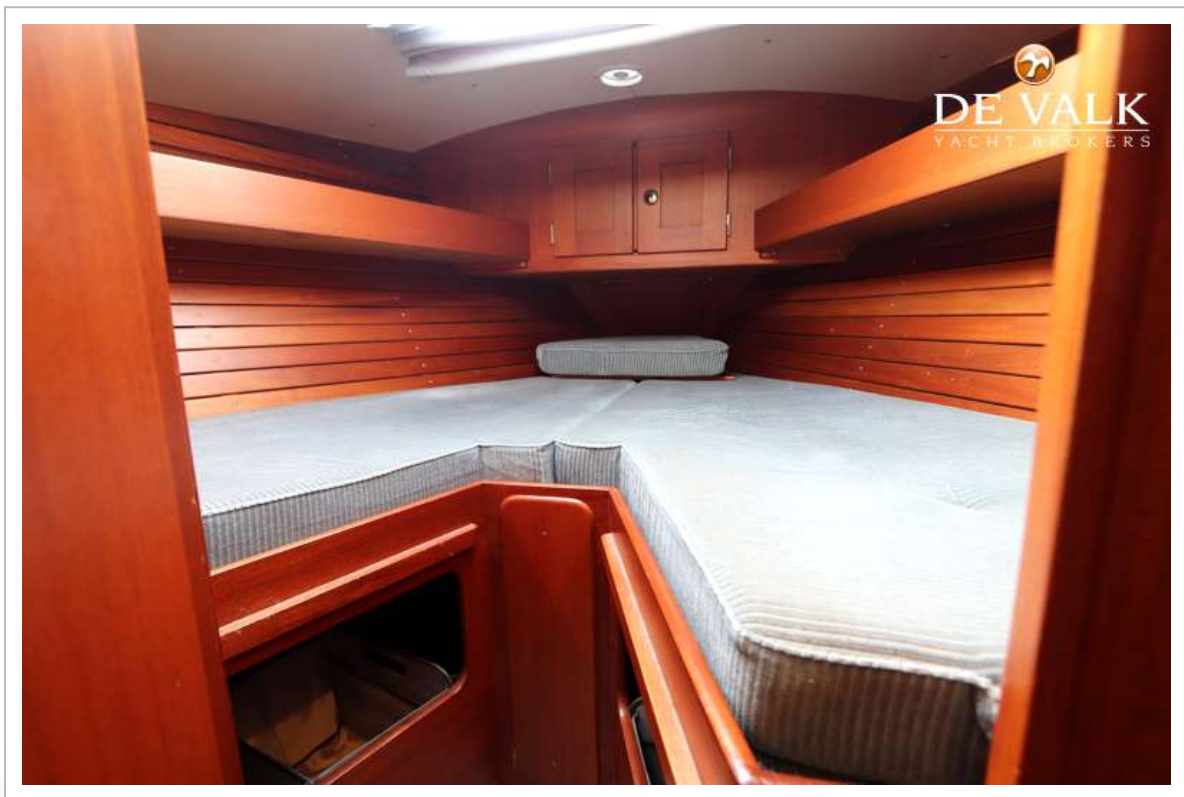
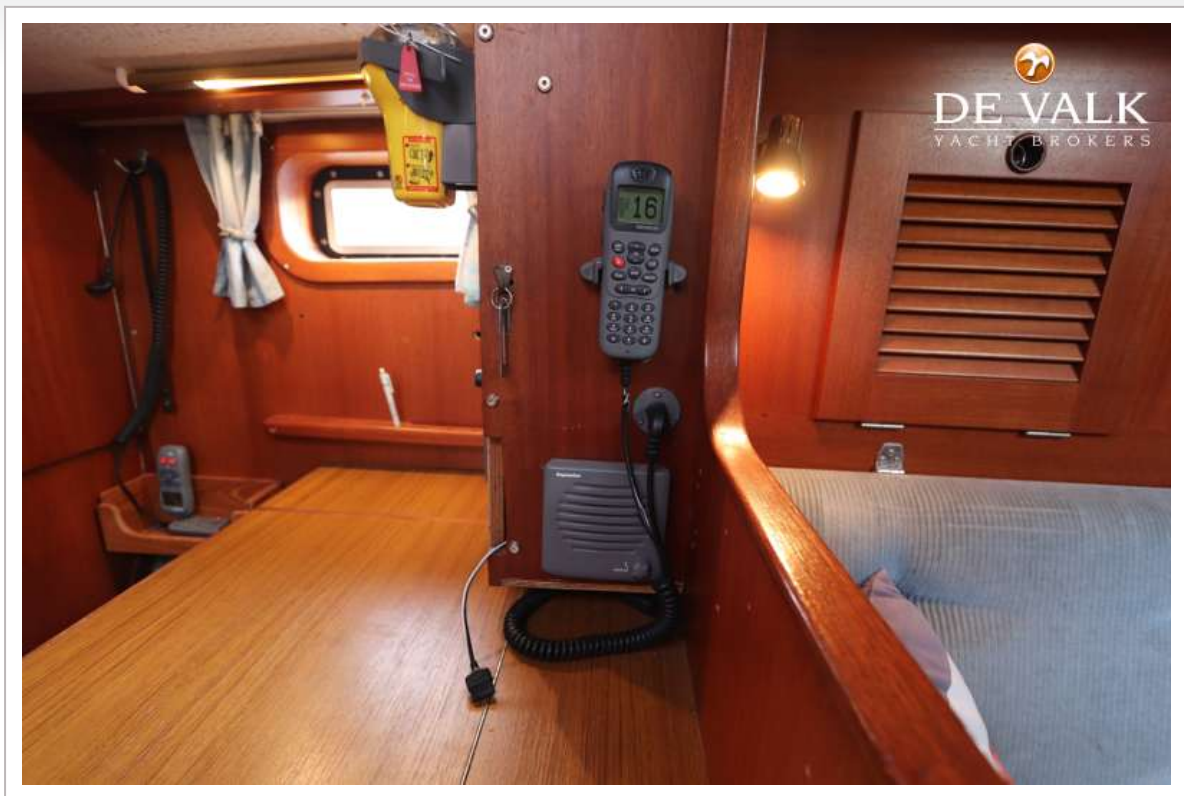


# HALLBERG RASSY 352

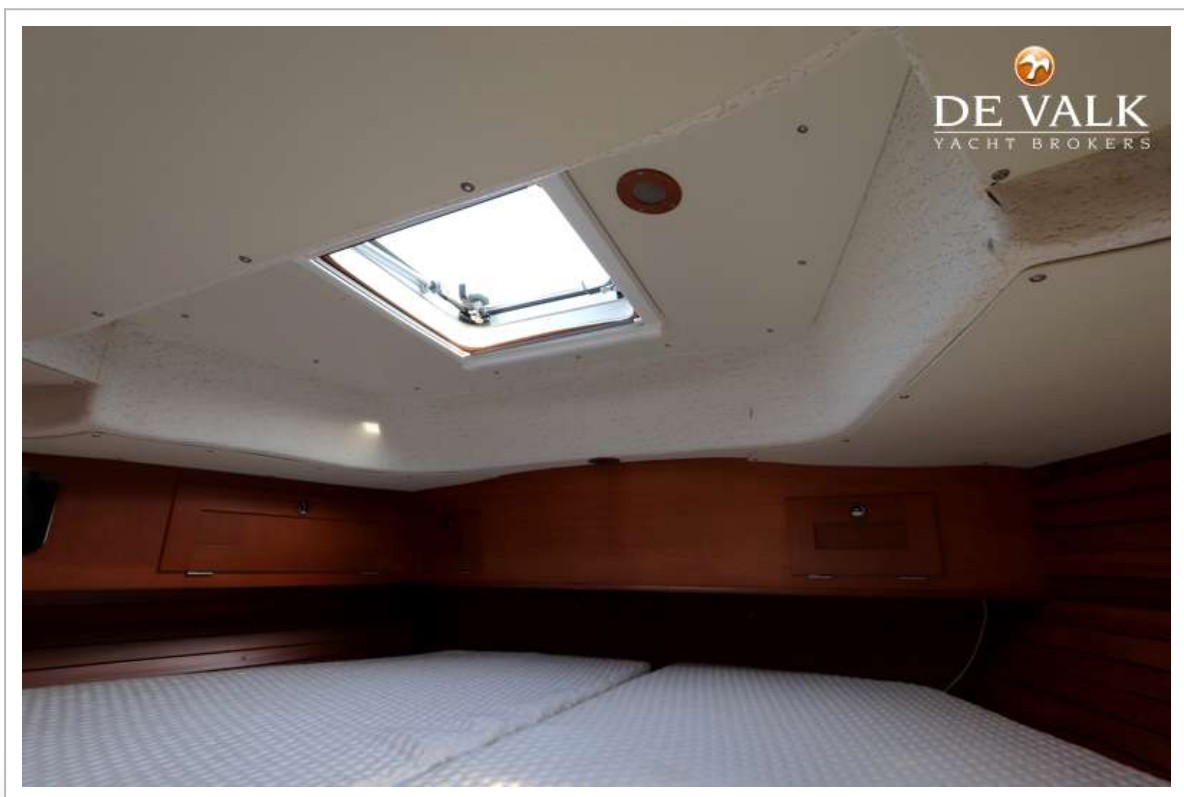




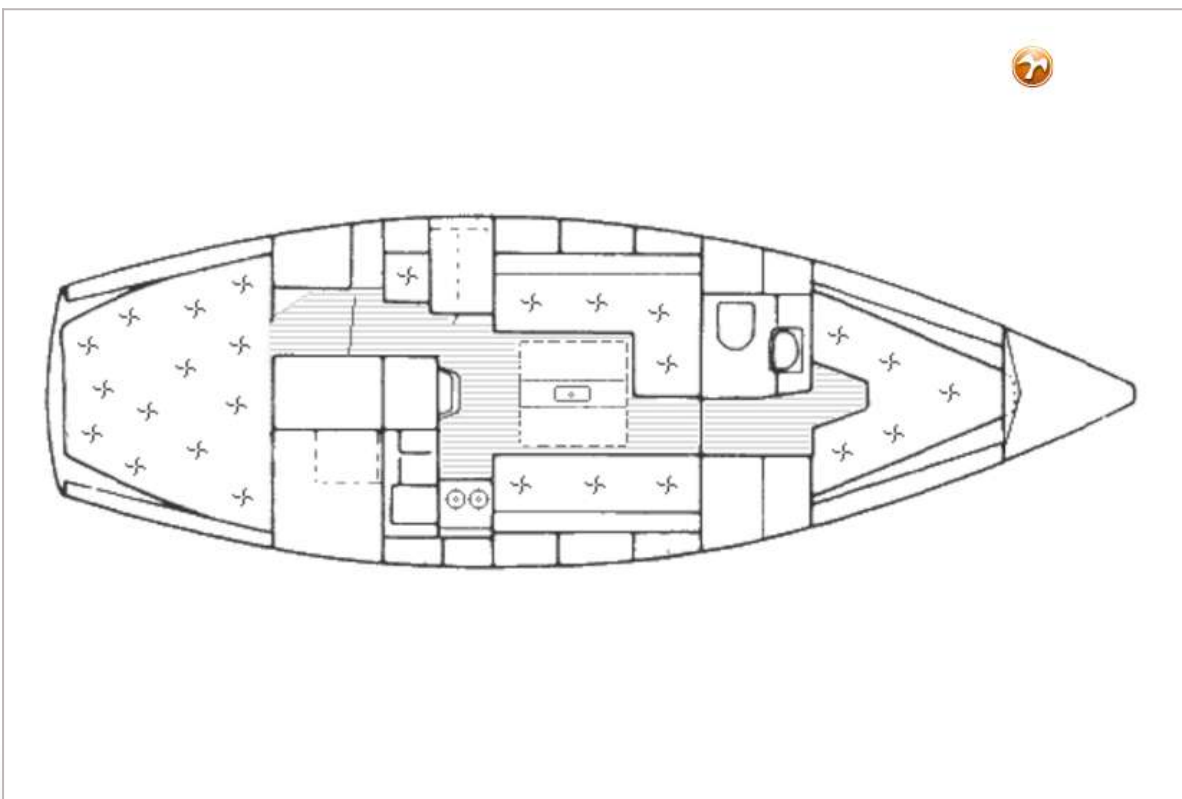
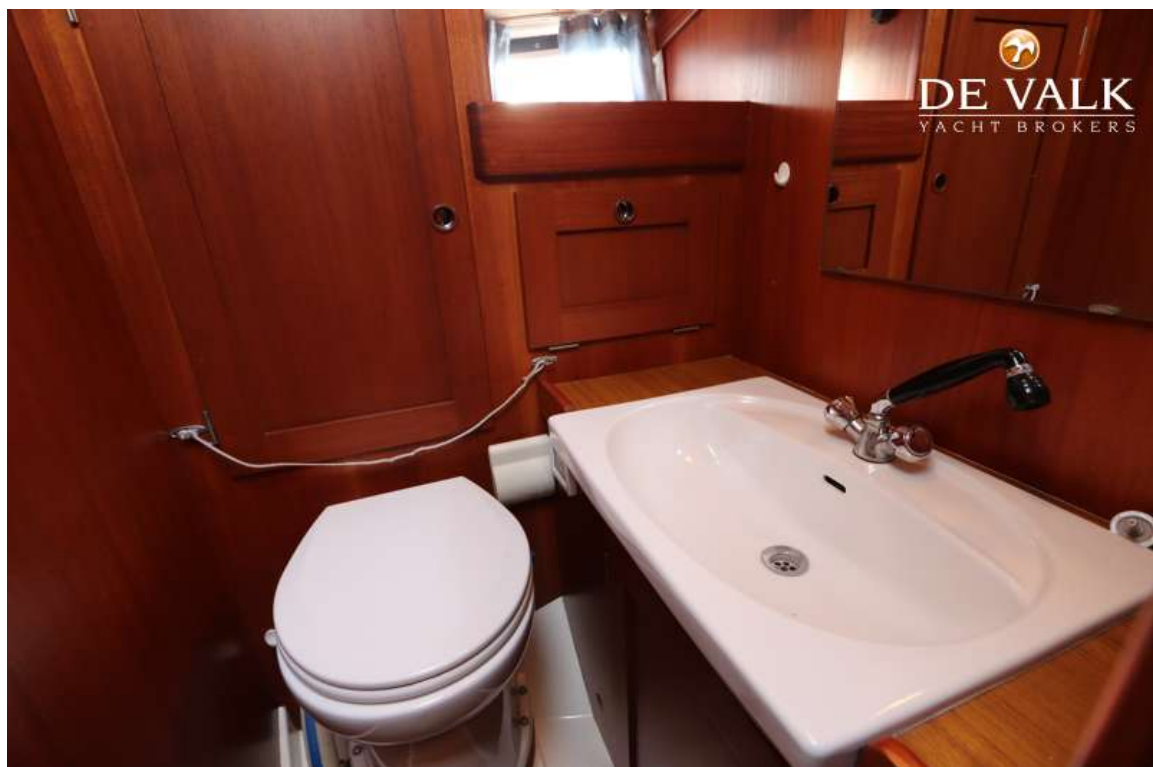
# HALLBERG RASSY 352



# HALLBERG RASSY 352

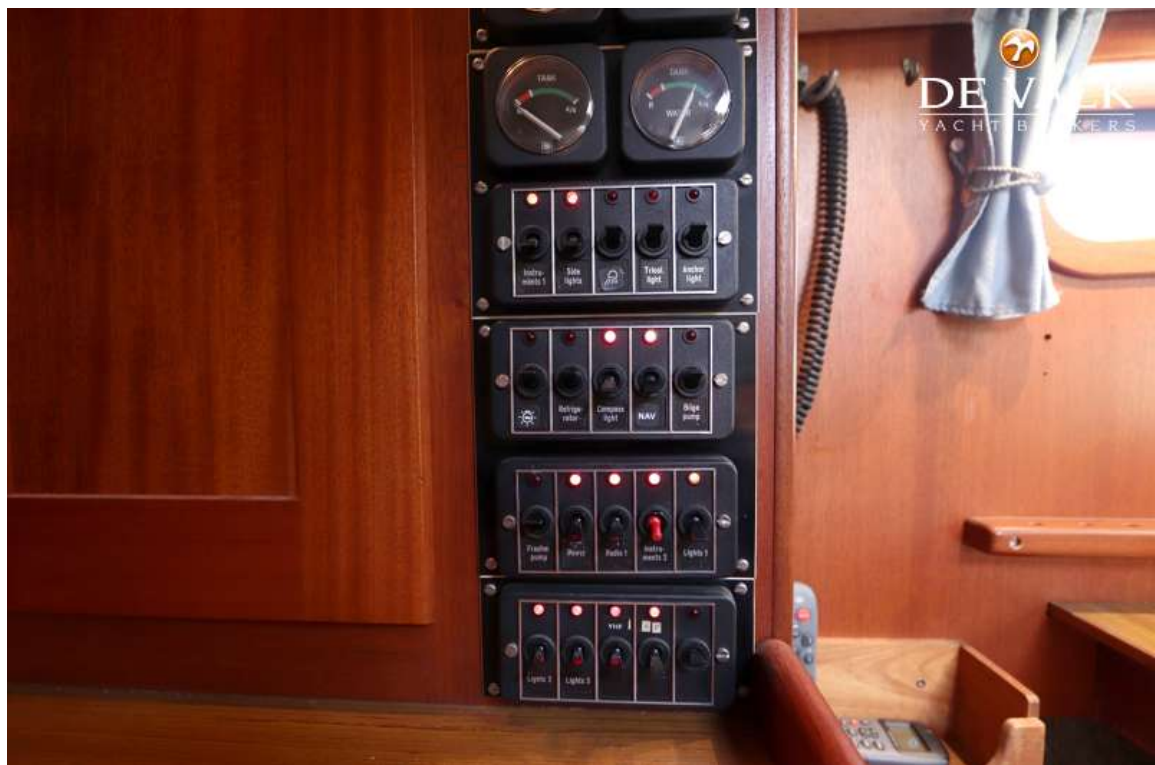


# HALLBERG RASSY 352





# HALLBERG RASSY 352



# HALLBERG RASSY 352

